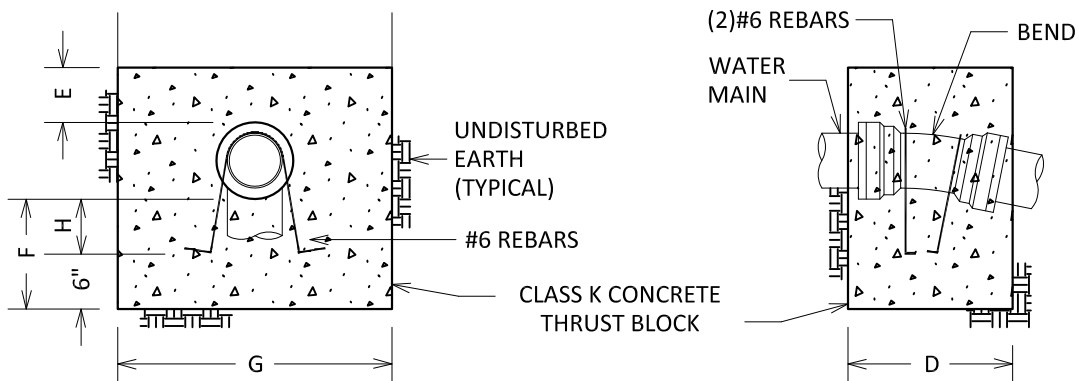
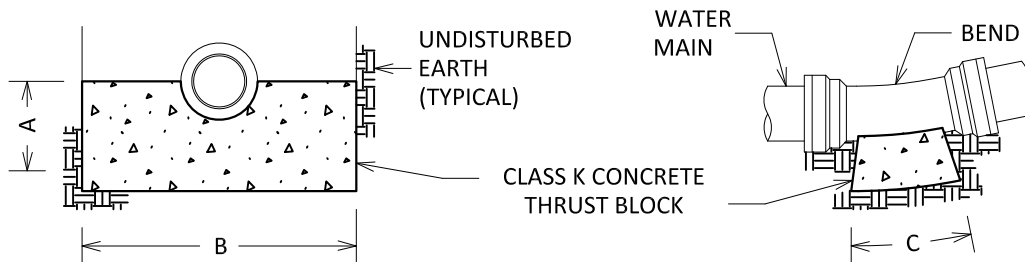


PIPE SIZE (INCHES)	BEND	TOP SECTION MINIMUM VOLUME CONCRETE	MINIMUM DIMENSIONS (IN FEET)							
			A	B	C	D	E	F	G	H
6"	11-1/4°	0.25 CY	1.0	2.5	1.0	1.5	0.5	1.0	2.5	0.5
	22-1/2°	0.50 CY	1.0	2.5	1.0	1.5	1.0	2.0	2.5	1.5
	45°	0.95 CY	1.0	2.5	1.0	3.0	1.5	2.0	2.5	1.5
	90°	1.30 CY	1.0	2.5	2.0	3.5	1.5	2.0	2.5	1.5
8"	11-1/4°	0.45 CY	1.0	2.7	1.0	1.5	1.0	1.5	2.7	1.0
	22-1/2°	0.90 CY	1.0	2.7	1.0	2.5	1.0	2.0	2.7	1.5
	45°	1.65 CY	1.0	2.7	1.5	3.5	1.5	2.0	3.0	1.5
	90°	2.35 CY	1.5	2.7	3.0	4.0	2.0	3.0	3.0	2.5
12"	11-1/4°	1.05 CY	1.0	3.0	1.5	2.5	1.5	2.0	3.0	1.5
	22-1/2°	2.00 CY	1.0	3.0	1.5	4.0	2.0	2.0	3.0	1.5
	45°	3.70 CY	1.5	3.0	3.0	5.0	2.0	3.0	3.5	2.5
	90°	5.20 CY	1.5	3.0	5.0	5.5	2.5	3.5	4.0	3.0



UPPER VERTICAL BEND



LOWER VERTICAL BEND

NOTES:

1. SPECIAL DESIGN IS REQUIRED FOR FITTINGS ON DOMESTIC WATER MAIN PIPE LARGER THAN 12 INCHES.
2. MECHANICAL RESTRAINT IS REQUIRED IN ADDITION TO THRUST BLOCK, SEE DETAIL S900-7.

CITY OF ROCHESTER		
VERTICAL THRUST BLOCK DOMESTIC SYSTEM		
ISSUED	1-13-06	NON-STANDARD DWG.NO.S900-5
REVISED	6-1-09	