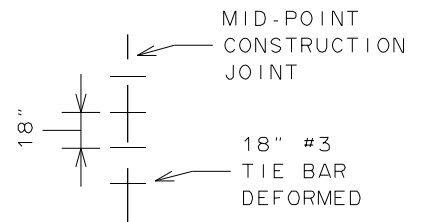


NOTES :

1. TO BE USED ONLY FOR COMMERCIAL DRIVWAYS WHERE DAILY VOLUME OF OVERSIZED VEHICLES REQUIRES ADDITIONAL STRUCTURAL SUPPORT AND ONLY WHERE APPROVED BY CITY.
2. NOMINAL WIDTH OF DRIVWAY APRON AT BACK EDGE IS 24 FEET MAXIMUM FOR TWO-WAY COMMERCIAL DRIVWAY, 16 FEET MAXIMUM FOR ONE-WAY COMMERCIAL DRIVWAY. ACTUAL WIDTH WILL BE AS APPROVED BY CITY.
3. SCORING PATTERN EVERY 3 TO 6 FEET SPACED EQUALLY AND ALONG INTERIOR TRANSITION EDGES.
4. CONTRACTION JOINT 1/4 INCH WIDE X 2 1/2 INCH DEEP AROUND OUTER LIMITS OF DRIVWAY APRON.
5. FULL DEPTH 1/2 INCH WIDE EXPANSION JOINT ACROSS SIDEWALK AT BOTH ENDS, BETWEEN SIDEWALK AND MAIN DRIVE PAVEMENT AND AROUND OUTER LIMITS OF DRIVWAY APRON WHERE ABUTS OTHER PAVED SURFACES.



CITY OF ROCHESTER		
HEAVY-DUTY COMMERCIAL DRIVWAY APRON		
ISSUED	2-10-00	NON-STANDARD
REVISED	7-1-17	DWG.NO.S608-25