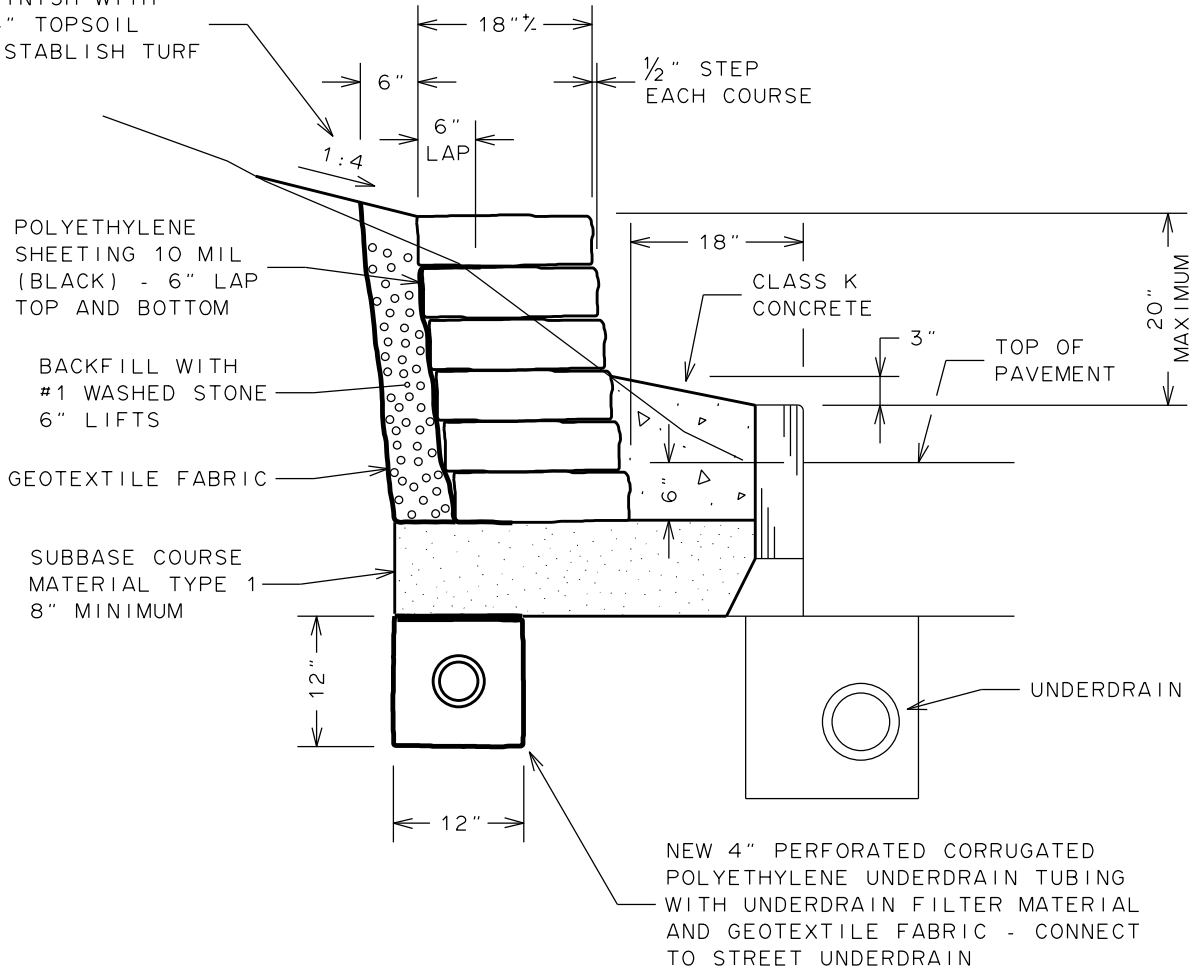


FINISH WITH
4" TOPSOIL
ESTABLISH TURF



NOTES:

1. STONE WALL IS TO BE BUILT USING SALVAGED MEDINA OR GRANITE STONE CURB.
2. GENERAL OVERALL SIZE AND COLOR OF STONE CURB PIECES ARE TO BE CONSISTENT AND MATCH AS CLOSE AS POSSIBLE SO ANY DIFFERENCES ARE NOT READILY NOTICEABLE, REGARDLESS OF SOURCE.
3. VERTICAL JOINTS ARE TO BE OFFSET IN SUBSEQUENT COURSES.
4. CLEAR AND GRUB EXISTING EMBANKMENT ONLY TO EXTENT NECESSARY TO CONSTRUCT STONE WALL.
5. EXISTING EMBANKMENT IS NOT TO BE LEFT UNSUPPORTED FOR MORE THAN 2 DAYS.

CITY OF ROCHESTER		
MEDINA/GRANITE STONE WALL		
ISSUED	5-31-12	NON-STANDARD DWG.NO.S561-I
REVISED		