



Area Map

Existing Area Images



Comments on Safety:

- Safety is a concern due to poor visibility.
- Realign trail to decrease sharp turns.
- Keep area open and simple.
- Ensure accommodations for all users.
- Incorporate mirrors at underpass corners.

Comments on Artwork:

- Artwork that is tactile for the blind.
- Needs to be non-porous for graffiti removal.
- Use a historic theme in artwork.
- Keep artwork simple so it doesn't compete with the surrounding landscape.

Perception of Safety

Replace concrete wall that separates the trail from the River with railings



Like 20 Neutral 9 Dislike 6

Cantilever the walkway



Like 25 Neutral 6 Dislike 5



Add Mirrors



Like 17 Neutral 6 Dislike 11

Selective Clearing



Like 25 Neutral 7 Dislike 4

Artwork on the Concrete Wall

No Artwork or Graphics



Like 8 Neutral 9 Dislike 17

Artwork/mosaic On the concrete wall



Like 24 Neutral 2 Dislike 10

Historic Imagery



Like 18 Neutral 8 Dislike 9

Brooks Landing Phase II Public Improvements
Visual Preference Survey

Site Area 1
Elmwood Underpass



Existing Area Images



Comments on Overlook:

- Do not make too elaborate so as to not detract from river views.
- Do not construct a roofed structure.
- Add at least one additional overlook.
- Push out more towards river.

Comments on Benches:

- Need to be comfortable and have arms.
- Should be easy to keep clean.
- Benches with backs.

Comments on Railings:

- Nothing too modern looking.
- Traditional railing.

Overlook Style

Traditional/Standard



Like 23 Neutral 7 Dislike 5

Arts and Craft



Like 19 Neutral 8 Dislike 7

Rustic



Like 13 Neutral 5 Dislike 13

Benches

Traditional/Standard



Like 33 Neutral 4 Dislike 4

Rustic



Like 9 Neutral 9 Dislike 17

Artistic



Like 14 Neutral 2 Dislike 20

Railings

Traditional/ Standard



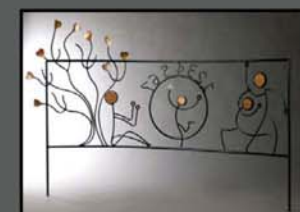
Like 28 Neutral 3 Dislike 2

Rustic



Like 5 Neutral 3 Dislike 25

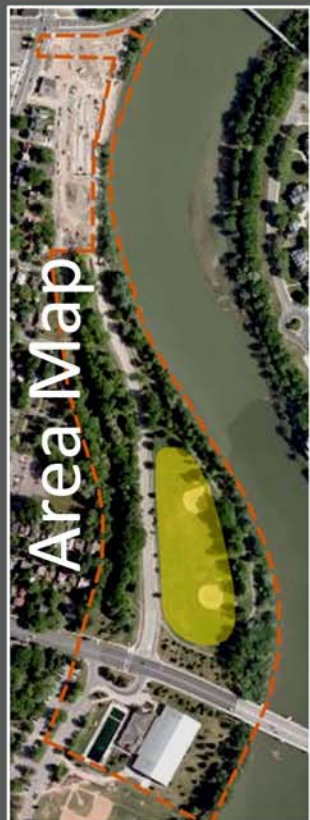
Artistic



Like 12 Neutral 5 Dislike 17

Brooks Landing Phase II Public Improvements
Visual Preference Survey

Site Area 2
Overlook



Existing Area Images



Level of Enclosure/Programming

Leave as is



Like 13 Neutral 11 Dislike 13

Add more bleachers



Like 18 Neutral 9 Dislike 10

Open views to River
From ballfield area



Like 28 Neutral 4 Dislike 4

Location of Fields

Leave close to River



Like 14 Neutral 8 Dislike 12

Bring Closer to Park Drive



Like 14 Neutral 8 Dislike 12

Bring closer to Elmwood



Like 8 Neutral 9 Dislike 18

Comments on Programming:

- Remove baseball fields, already have them south of Elmwood.
- Create a dog area.
- Add a multi-use field.
- Do not overlap ball and multi-purpose fields.

Comments on Field Location:

- Make the fields easily walkable from parking area.

Comments on Field Configuration:

- Pull ball fields close to one another.
- Keep in mind location of the sun during times that fields are in use.

Ball Field Configuration

Separated



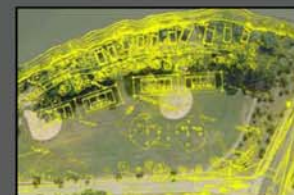
Like 7 Neutral 16 Dislike 12

Side by Side



Like 19 Neutral 11 Dislike 5

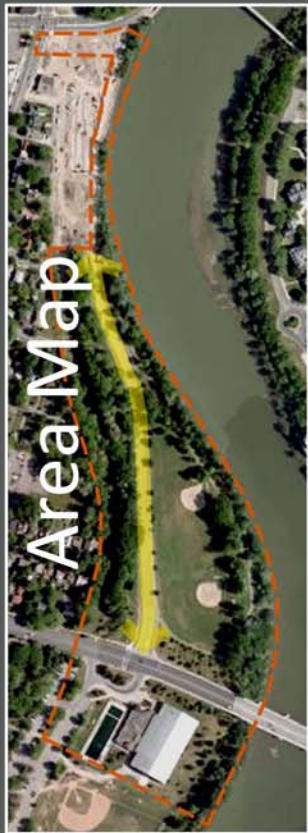
Back to Back as per the
Park Plan of 1936



Like 3 Neutral 15 Dislike 18

Brooks Landing Phase II Public Improvements
Visual Preference Survey

Site Area 3
Baseball fields



Existing Area Images



Parking

Angled parking along one side



Like	Neutral	Dislike
25	5	5

Parking lot within park



Like	Neutral	Dislike
6	7	22

Parallel parking on both sides with bumpouts



Like	Neutral	Dislike
18	2	15

Drainage Options for Parking Areas

Permeable Pavers



Like	Neutral	Dislike
21	7	7

Reinforced grass



Like	Neutral	Dislike
16	10	8

Rain Gardens



Like	Neutral	Dislike
24	4	6

Drive Details

Turn around at end of park drive



Like	Neutral	Dislike
20	6	8

Specialized crosswalk pavement materials



Like	Neutral	Dislike
20	6	8

Raised crosswalk



Like	Neutral	Dislike
25	1	9

Lighting similar to that in front of hotel along waterfront



Like	Neutral	Dislike
32	2	2

Comments on Parking:

- Allow parking for park and trail users.
- Parking should be along park drive.
- Angled parking on ball field side.

Comments on Drainage Options:

- Create more green areas and planting opportunities.

Comments Drive Details:

- Raised crosswalks or speed bumps.
- Narrow roadway as much as possible.
- Roundabout is a good way of calming traffic.

Brooks Landing Phase II Public Improvements
Visual Preference Survey

Site Area 4
Former Plymouth Ave



Existing Area Images



Benches

Traditional/Standard



Like	Neutral	Dislike
28	3	4

Rustic



Like	Neutral	Dislike
11	4	20

Artistic/ Interpretive



Like	Neutral	Dislike
13	6	17

Clearing

Leave river edge as is



Like	Neutral	Dislike
3	7	24

Clear some small areas of underbrush



Like	Neutral	Dislike
24	7	4

Significantly clear River edge



Like	Neutral	Dislike
22	2	12

Comments on Benches:

- Just include benches, no picnic tables, as introducing tables may invite garbage.
- Benches with backs.

Comments on Clearing:

- Maintain existing trees and look at adding new young trees.
- Choose strong sight lines.
- Open up river edge.

Comments on Landscape & Amenities:

- No flower beds.

Landscaping & Amenities

Addition of picnic tables



Like	Neutral	Dislike
22	5	7

Additional natural landscaping



Like	Neutral	Dislike
20	4	2

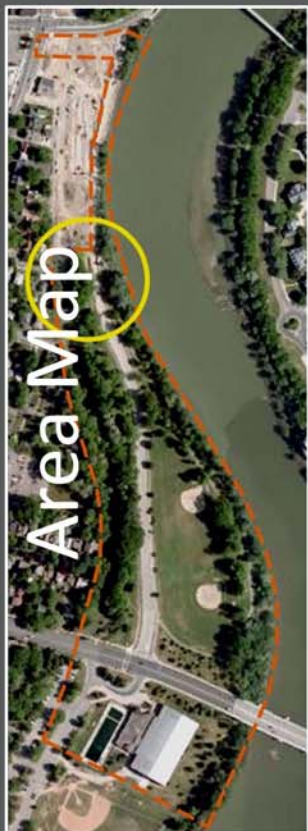
Integrate artwork



Like	Neutral	Dislike
28	4	12

Brooks Landing Phase II Public Improvements
Visual Preference Survey

Site Area 5
Grove of Trees



Existing Area Images



Comments on Connectivity:

- Connection should flow between hotel and park.
- Ensure calm traffic flow.
- Maintain a two-way road connection.

Comments on Buffering:

- Landscape transition area to maintain park feeling.
- Add green space with pavement removal.
- Minimize connection with hotel.
- Make area special with plantings such as Highland Park does with Lilacs, and Maplewood does with the rose garden.

Vehicular Connectivity

No Connection to Hotel Development



Like 12 Neutral 4 Dislike 19

Narrow, one-way access drive



Like 10 Neutral 8 Dislike 16

Controlled/calmed Two way drive



Like 21 Neutral 1 Dislike 12

Buffering/ Edging

No additional buffering



Like 7 Neutral 10 Dislike 22

Create a rain garden



Like 20 Neutral 3 Dislike 4

Additional Plantings to buffer Park from development

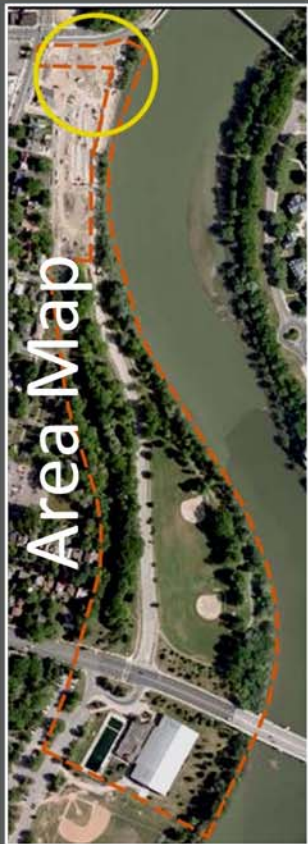


Like 27 Neutral 0 Dislike 0

Line drive with boulders



Like 13 Neutral 6 Dislike 14



Existing Area Images



Viewpoints

From Genesee/Plymouth intersection



Like	Neutral	Dislike
20	7	7

Looking southwest



Like	Neutral	Dislike
25	1	5

From trail northbound



Like	Neutral	Dislike
29	3	3

Scale/Mass

Large scale piece



Like	Neutral	Dislike
11	9	17

Moderately sized



Like	Neutral	Dislike
20	8	7

Small, contemplative



Like	Neutral	Dislike
10	8	18

Theme

Historical



Like	Neutral	Dislike
22	4	9

Abstract



Like	Neutral	Dislike
11	4	21

Natural



Like	Neutral	Dislike
12	10	13

Comments on Viewpoints:

- Like a 360 degree focal point.

Comments on Scale/Mass:

- Keep artwork small to medium in size.
- Keep it simple, clean, clear and easy to maintain.

Comments on Theme:

- Natural or animal theme.
- Use to announce 19th Ward neighborhood.
- Just add flowers and shrubs.
- Make it colorful.
- Make sure graffiti can be easily cleaned off.

Brooks Landing Phase II Public Improvements
Visual Preference Survey

Site Area 7
Plymouth Ave



Existing Area Images



Comments on Connections to Neighborhood:

- Make connections with neighborhood.
- No stairs, only ramps if needed.
- Important to ask neighbors at the end of each street.

Comments on Pathway:

- Make pathways accessible, and natural.
- Stone dust paths are preferred.
- Keep area green.

Comments on Clearing:

- Clean out some brush growth and dead trees.
- Like it as is, very natural.

Pedestrian Connections to Neighborhood

Informal (unimproved) pathway



Like
14

Neutral
4

Dislike
13



Create a more formal connection with stairs/ ramp



Like
19

Neutral
4

Dislike
10



Pathway

Leave as grass path



Like
17

Neutral
6

Dislike
12

Integrate stone dust path



Like
16

Neutral
10

Dislike
11

Integrate asphalt path



Like
14

Neutral
4

Dislike
16

Clearing

Selective clearing only for sightline & safety



Like
20

Neutral
7

Dislike
7

Selective clearing at streets for visual neighborhood connection to park/river but keep corridor separated from larger park



Like
17

Neutral
10

Dislike
8

Wholesale understory clearing to integrate neighborhood to park



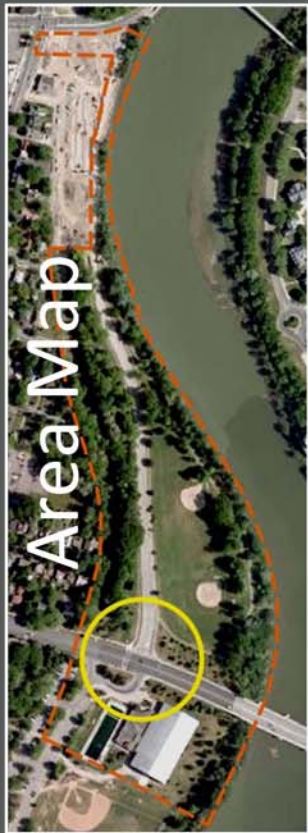
Like
7

Neutral
10

Dislike
18

Brooks Landing Phase II Public Improvements
Visual Preference Survey

Site Area 8
Neighborhood
Interface



Existing Area Images



Comments on Circulation:

- Restrict auto access and parking.
- Make bus route accessible.
- Install pedestrian crossing signals that count down crossing time.

Comments on Entry:

- Respect Olmsted's ideas for the park.
- Keep area simple and natural.
- Like intersection treatment and high visibility crosswalks.
- Use area to announce entrance to the park and 19th Ward neighborhood.

Pedestrian Circulation

Specialized crosswalk pavement materials



Like	Neutral	Dislike
23	2	8

Full intersection treatment



Like	Neutral	Dislike
25	0	8

Use of medians to Shorten/break up crossing



Like	Neutral	Dislike
19	7	7

Gateways/ Entry Statement

Medina Stone Columns



Like	Neutral	Dislike
13	10	11

Similar columns as those at Brooks Landing – reflective of Olmsted



Like	Neutral	Dislike
22	8	3

More rustic



Like	Neutral	Dislike
18	9	7