



Public Information Meeting Highland Park / Canalway Trail Project

Tuesday, October 18, 2011
St. John's Home
6:00 PM



FISHERASSOCIATES



Project Objectives

- Connect Highland Park with the Erie Canalway Trail and the Genesee Riverway Trail.
- Provide a safe pedestrian and bicycle route to Highland Park.
- Build a cost effective, context-sensitive, community-valued trail.
- Enhance the regional trail system.
- Reduce number of short trips taken by motor vehicles thus improving air quality.

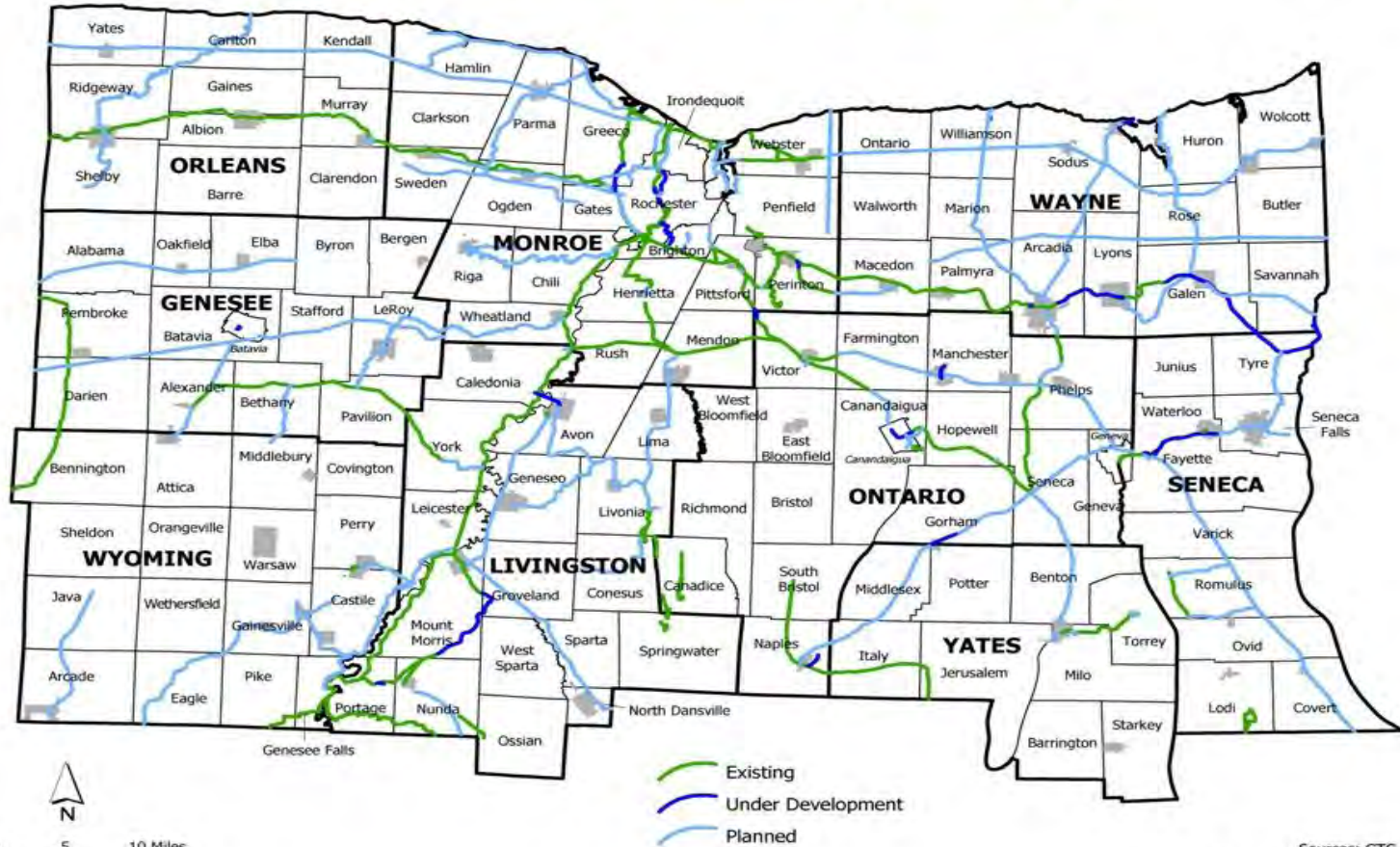
Project Evolution

- August 2002 – Genesee Transportation Council – Regional Trails Initiative
 - Purpose: to develop a comprehensive and achievable action plan for community leaders to create and maintain a safe, accessible, and highly functional regional trail system that is fully integrated with the existing transportation system and constitutes a nationally recognized distinguishing feature of this region

Near-Term Priority Project #12: Genesee Riverway Trail Neighborhood Connectors - Highland Park/Brighton Park Connection

Project Evolution - continued

Multi-Use Trails in the Genesee-Finger Lakes Region



Sources: GTC, 2010
NYS Office of Cyber Security, 2010

Project Evolution - continued

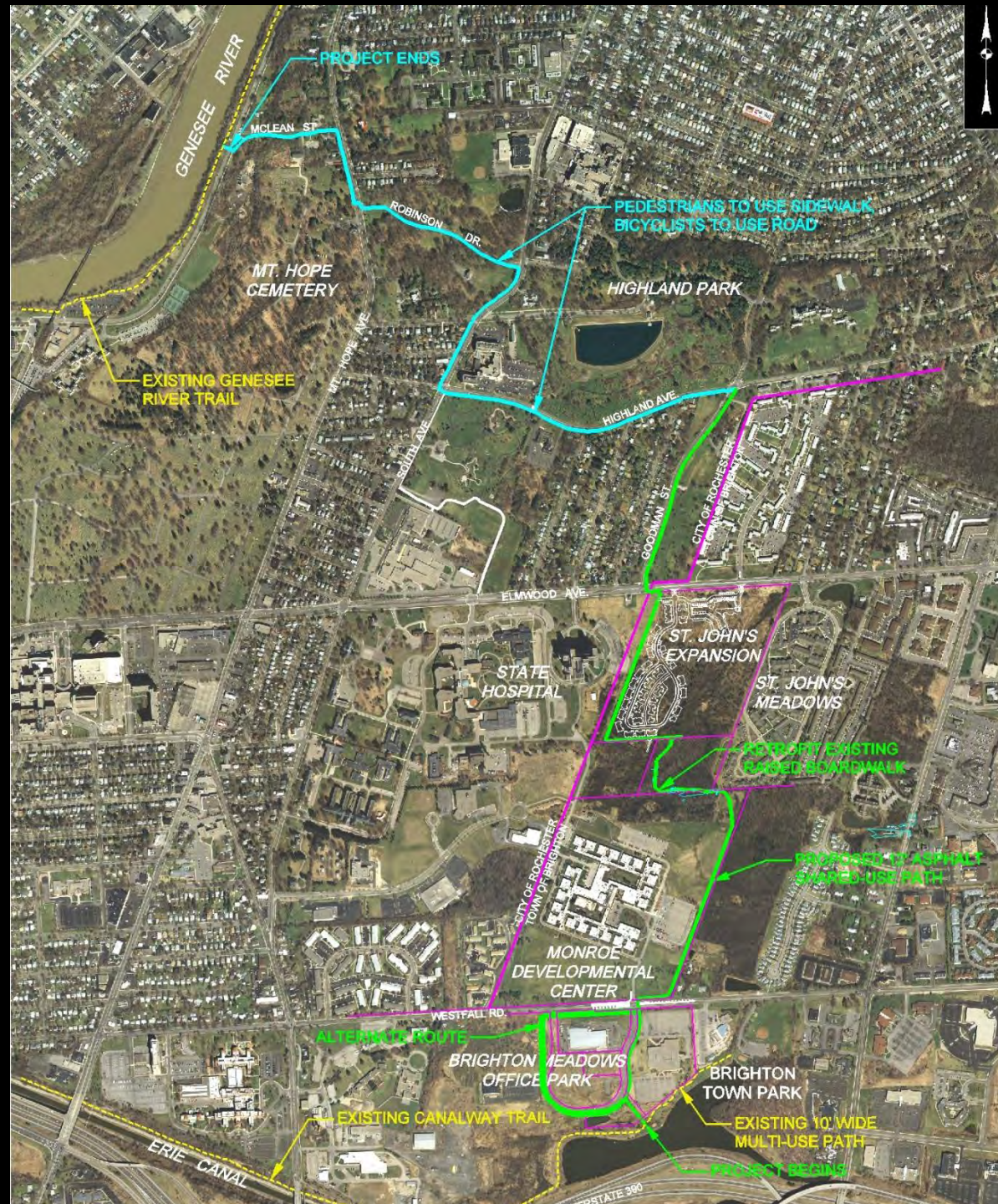
- October 2004 – Highland Park/Canalway Trail - Planning and Concept Design FINAL REPORT
 - Recommended a trail section running east/west along Highland Avenue, north/south along Goodman Street, and a crossing at Elmwood Avenue
- October 2004 – Town of Brighton and City apply to Genesee Transportation Council for Transportation Improvement Program funding for project
- January 2009 – Fisher Associates begins work on project

Project Evolution - continued

- July 2009 – Public Information Meeting No. 1 Held
- June 2010 – Neighborhood Association Meeting Held
- August 2011 – Draft Design Report Prepared
- October 18, 2011 – Public Info Meeting No. 2

Original Alignment

Note: This route was as put forth and approved in the 2004 study.



Original Alignment within City Limits

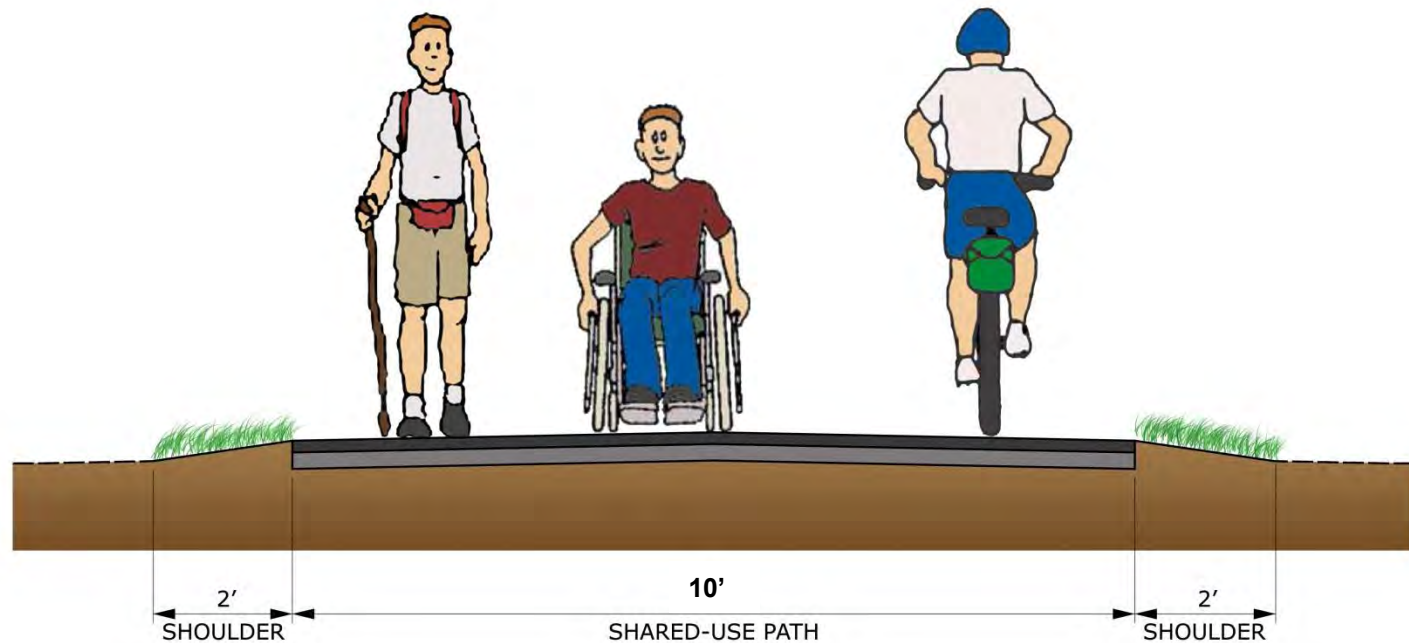


Trail Segments

- Off-road trail segment – shared-use trail that is separated from the existing roadway (usually by 10' or more)
- On-road trail segment – utilizes sidewalks and shoulders or shares the travel lane with motorists.

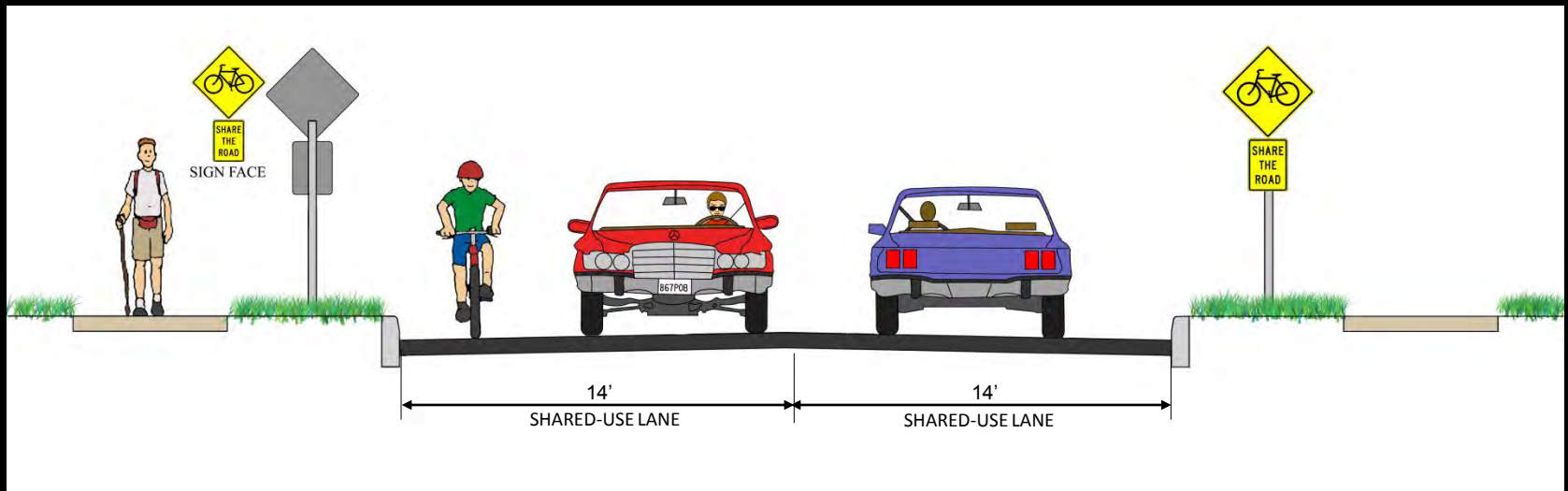
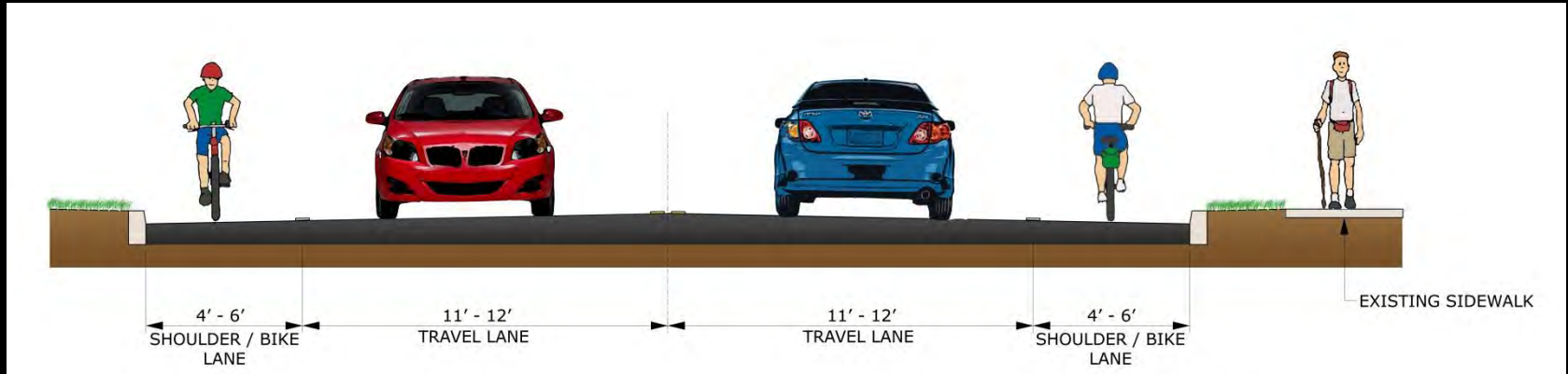


Trail Section for Off-Road Segments



OFF-ROAD SECTION

Trail Sections for On-Road Segments

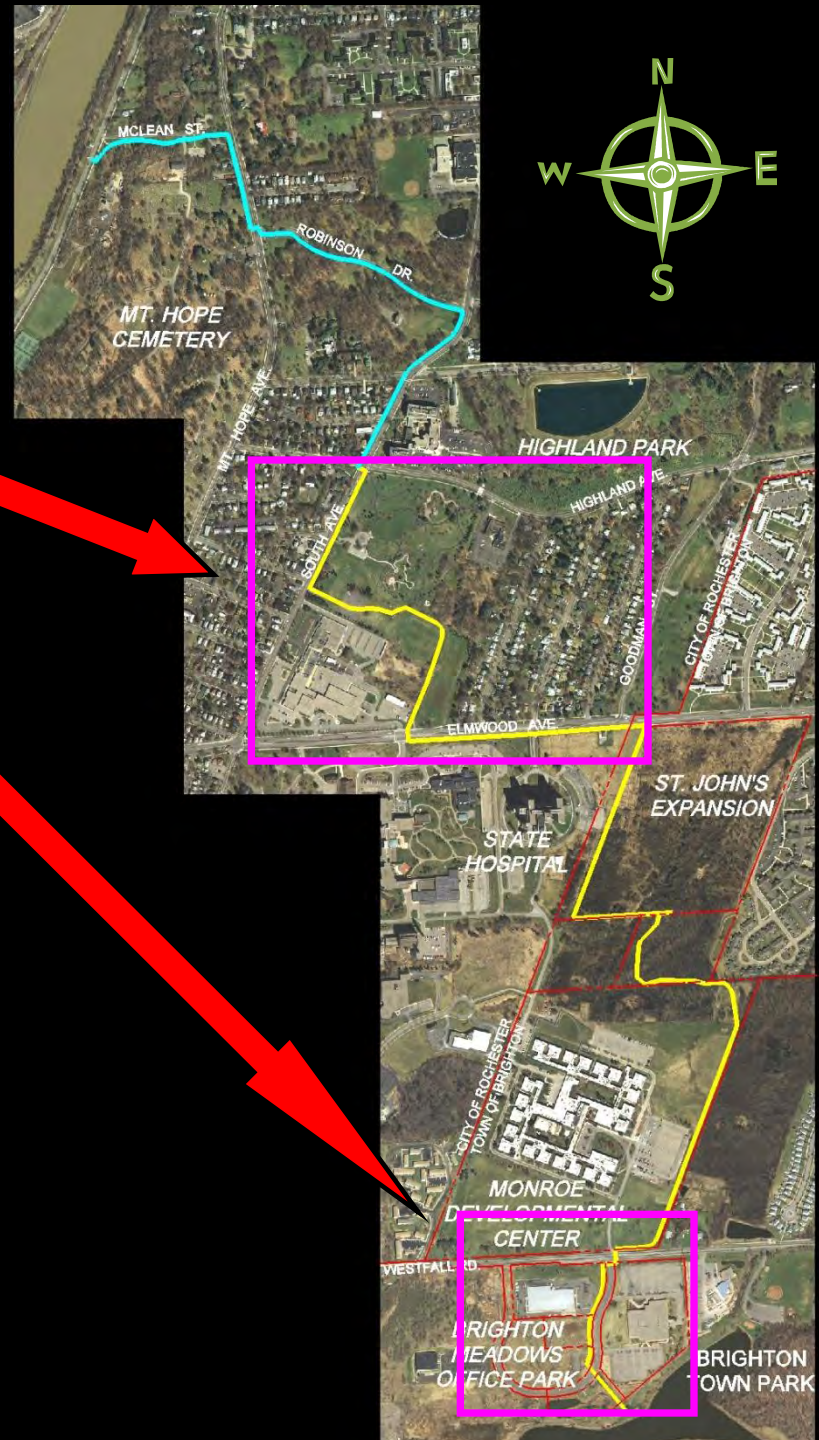


Public/Neighborhood Comments

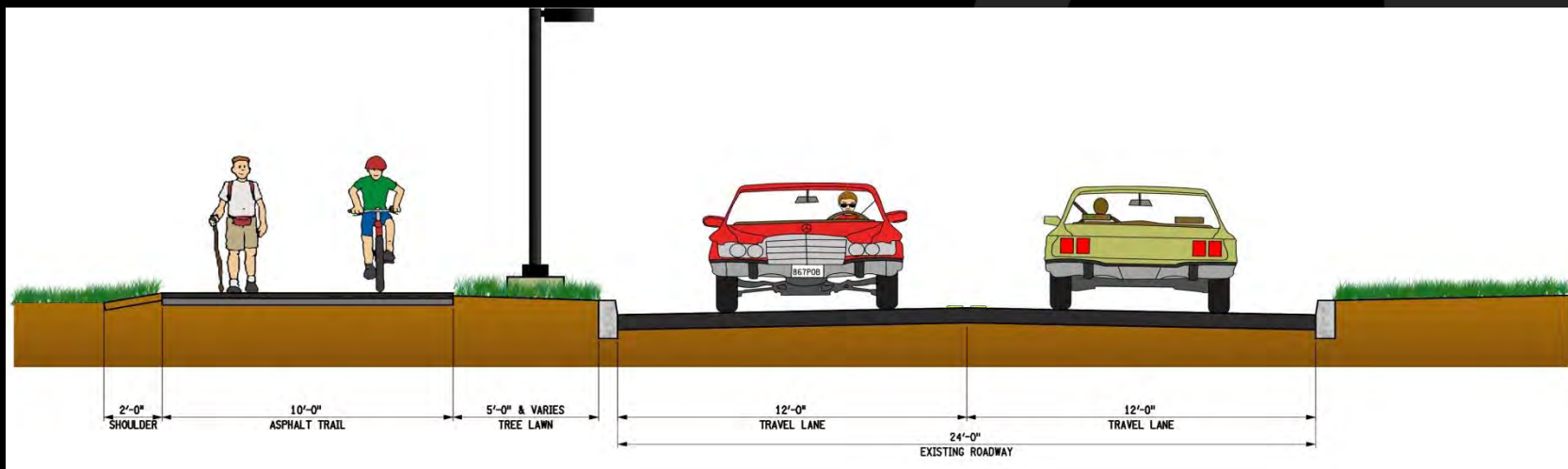
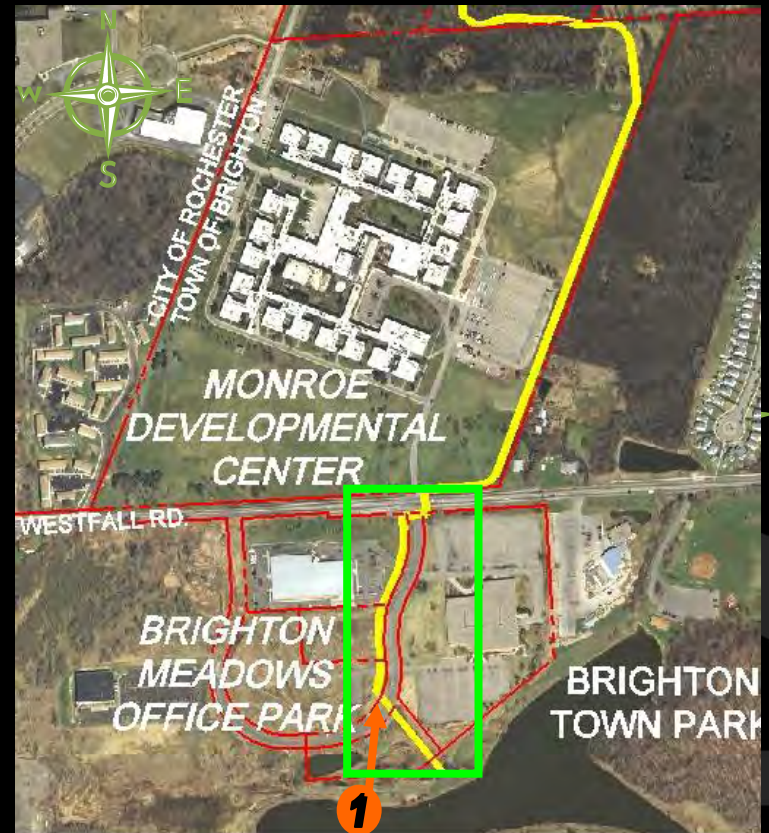
- Safety of crossing Elmwood Ave. at Goodman Street
- Safety of bicyclists on Highland Ave. due to high volumes and speeds
- Trail along Goodman St. conflicts with the Lilac Festival traffic and parking
- Concern about the increase in pedestrian and bicycle traffic along Highland Ave.
- Concern about crossing Mt. Hope Ave.

Revised Alignment

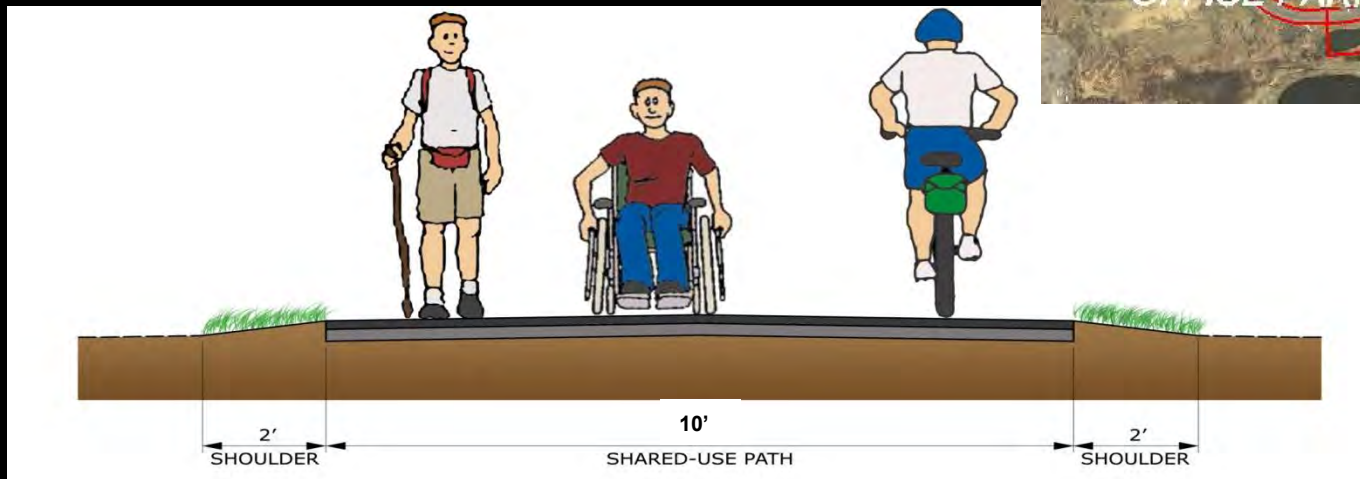
- Locations of changes
 - Between Elmwood Ave. and Highland Ave.
 - Along Sawgrass Dr.
- Remainder of trail route is unchanged



Sawgrass Dr.



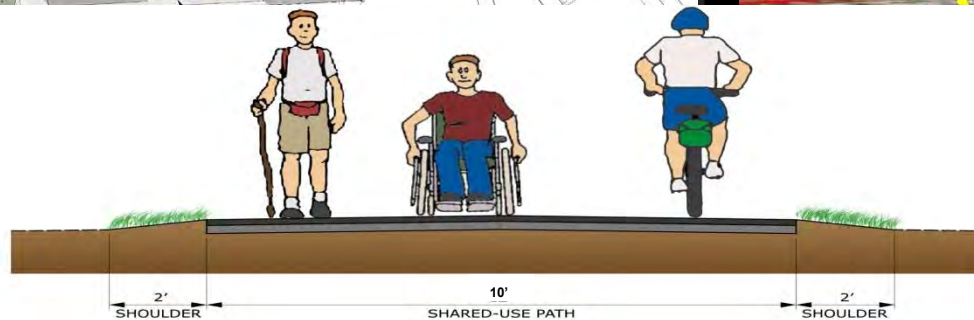
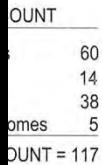
Monroe Developmental Center/DDSO Facility

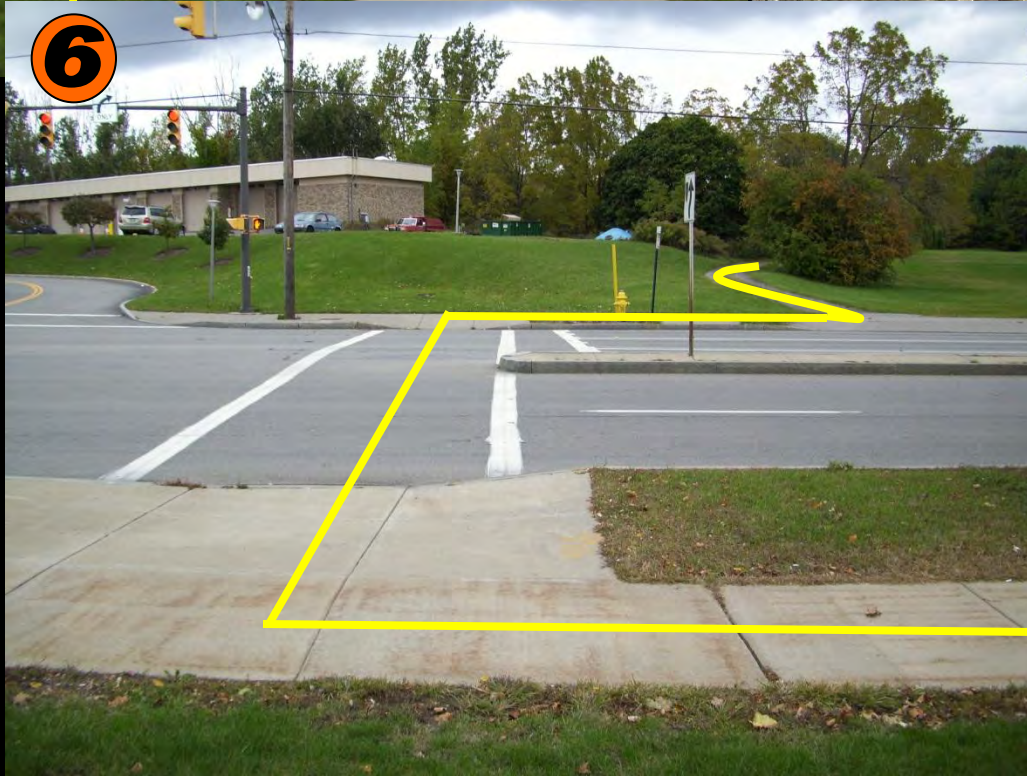




St. John's

FISHER ASSOCIATES

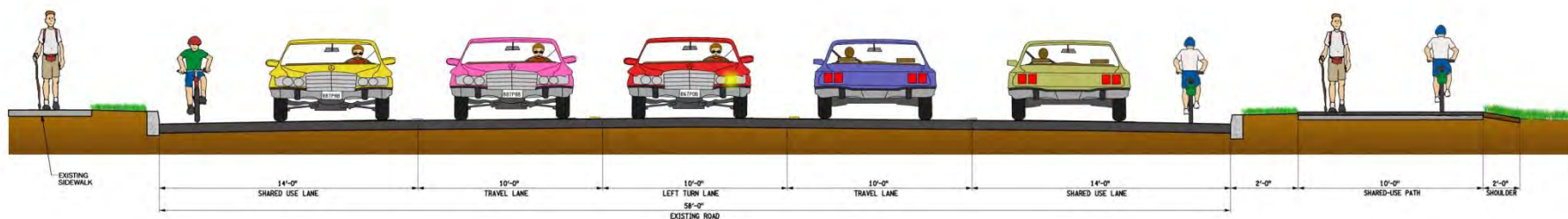




Elmwood Ave.

Elmwood Ave.

- 14' wide outside shared-use travel lanes
- 10' wide remaining lanes
- 10' wide multi-use trail on south side of road
- Existing sidewalk on north side of road



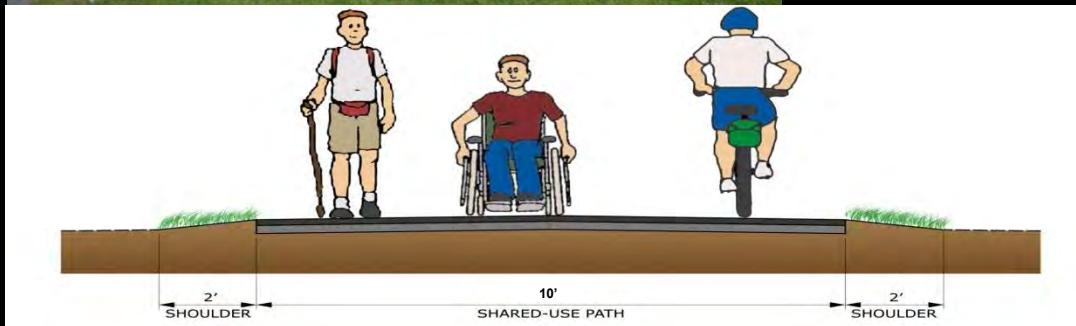
7



8

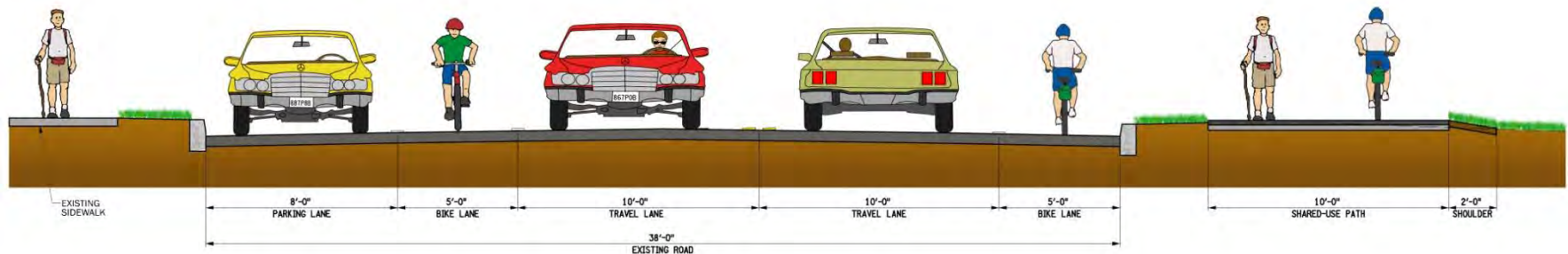


9



Highland Park
South

South Ave. Elmwood to Highland



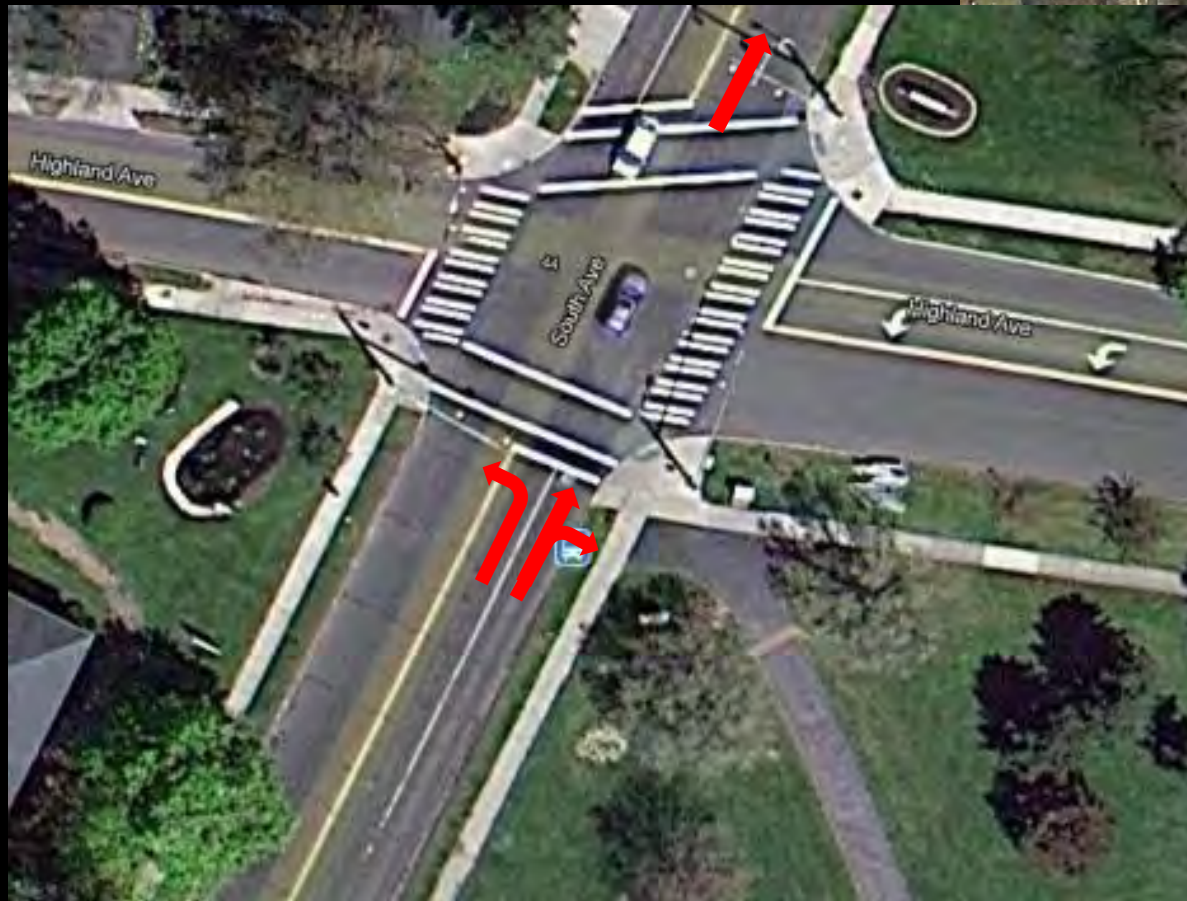
11



12



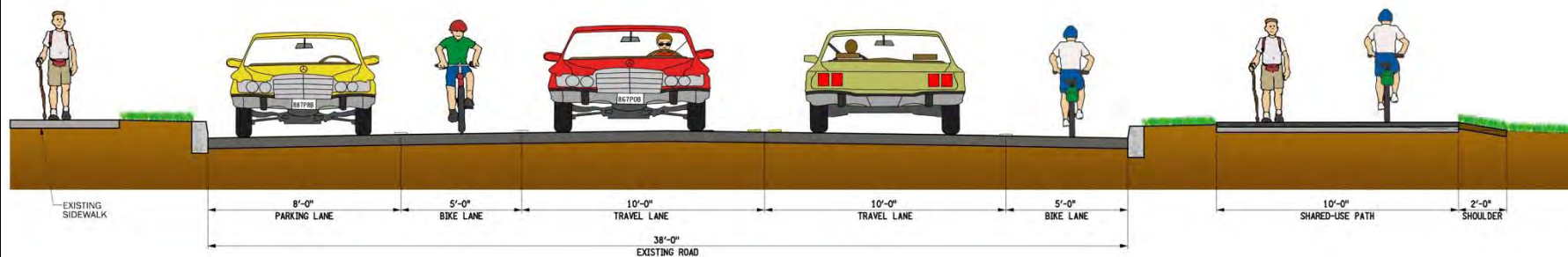
South Ave.



South Ave./Highland Ave. Intersection

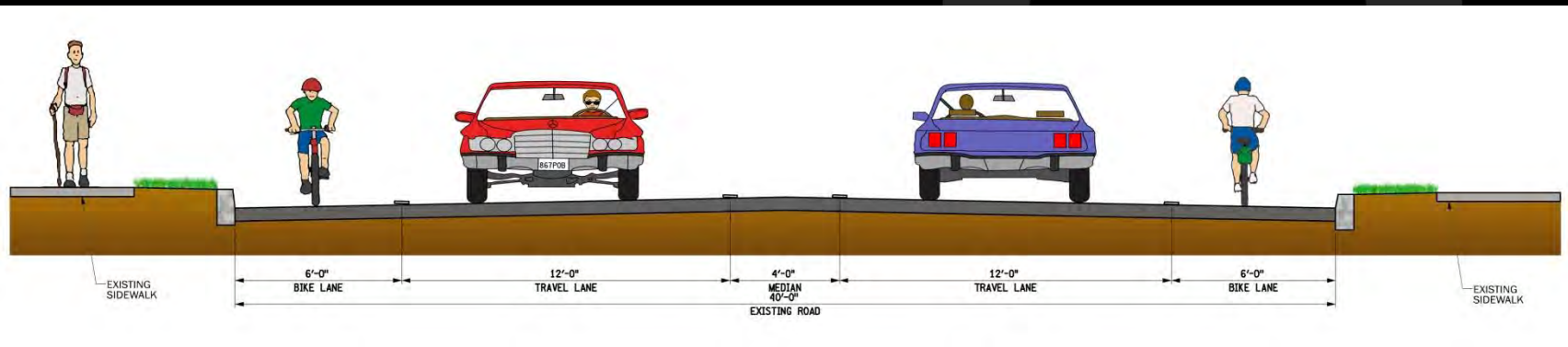
South Ave. Elmwood to Highland

- 10' wide travel lanes
- 8' wide parking lane on west side
- 5' wide bike lanes
- 10' wide multi-use trail on east side
- Existing sidewalk on north side of road

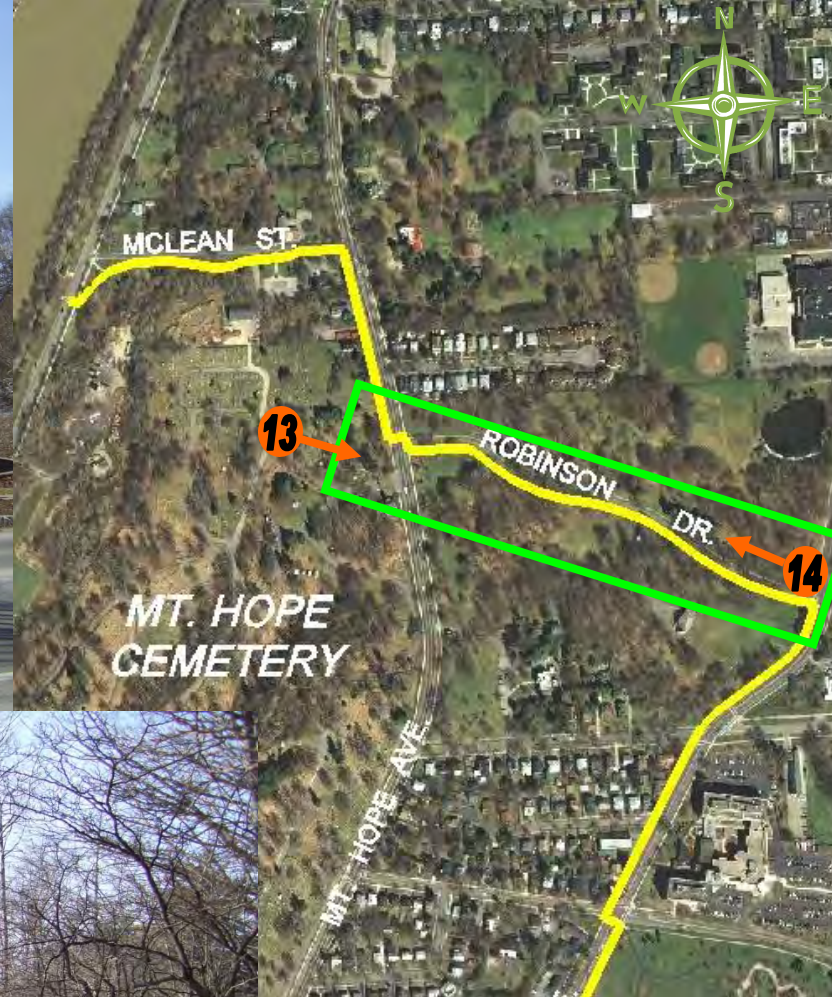


South Ave. Highland to Robinson

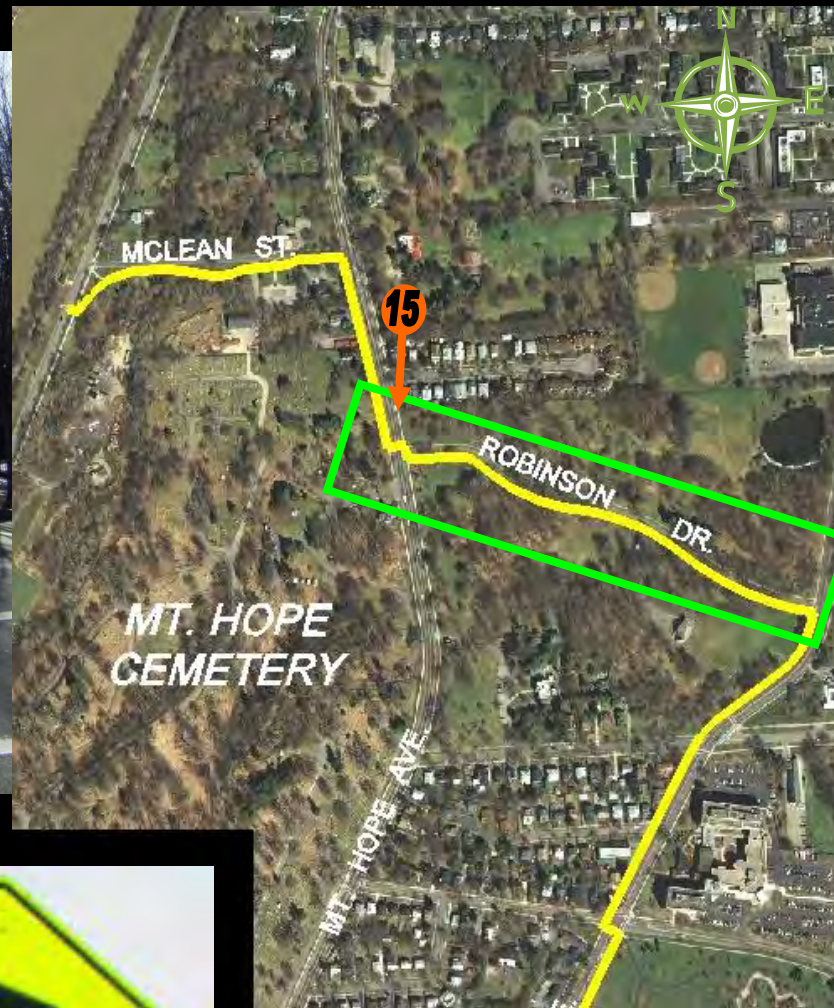
- 12' wide travel lanes
- 4' wide median
- 5' wide bike lanes
- 6' wide bike lanes
- Existing sidewalk on both sides of road



13



Robinson Dr.



**Mt. Hope @
Robinson Dr.**

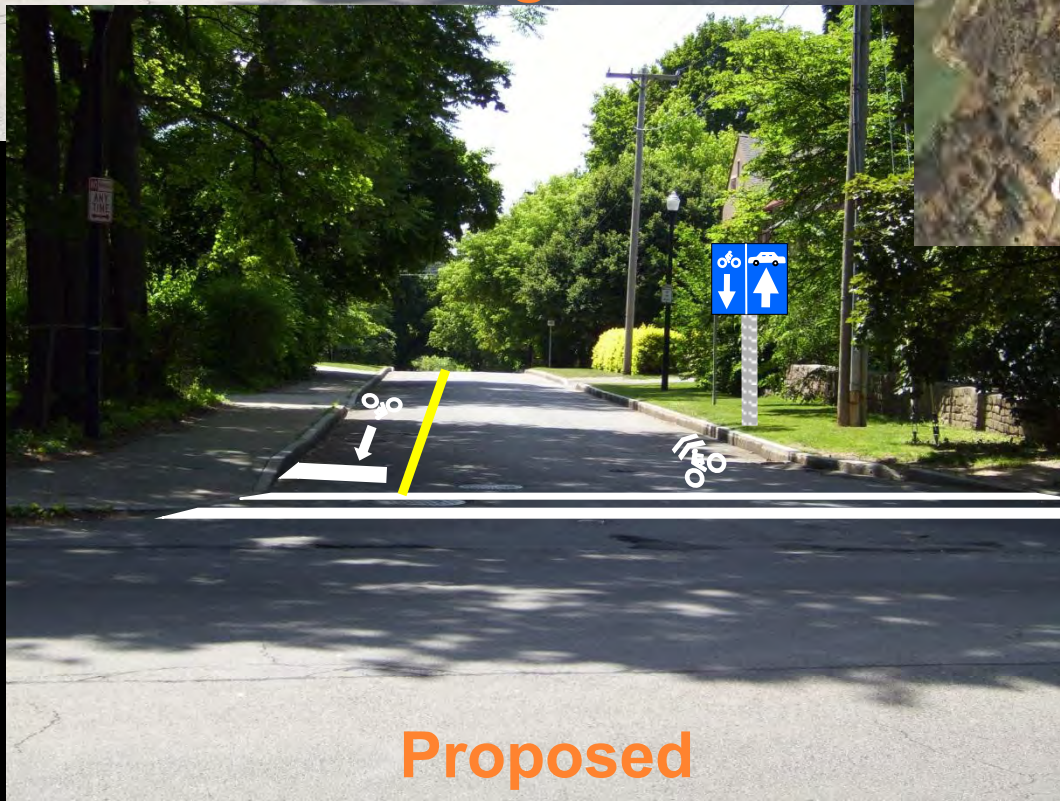


Mt. Hope Ave.

18



Existing



Proposed

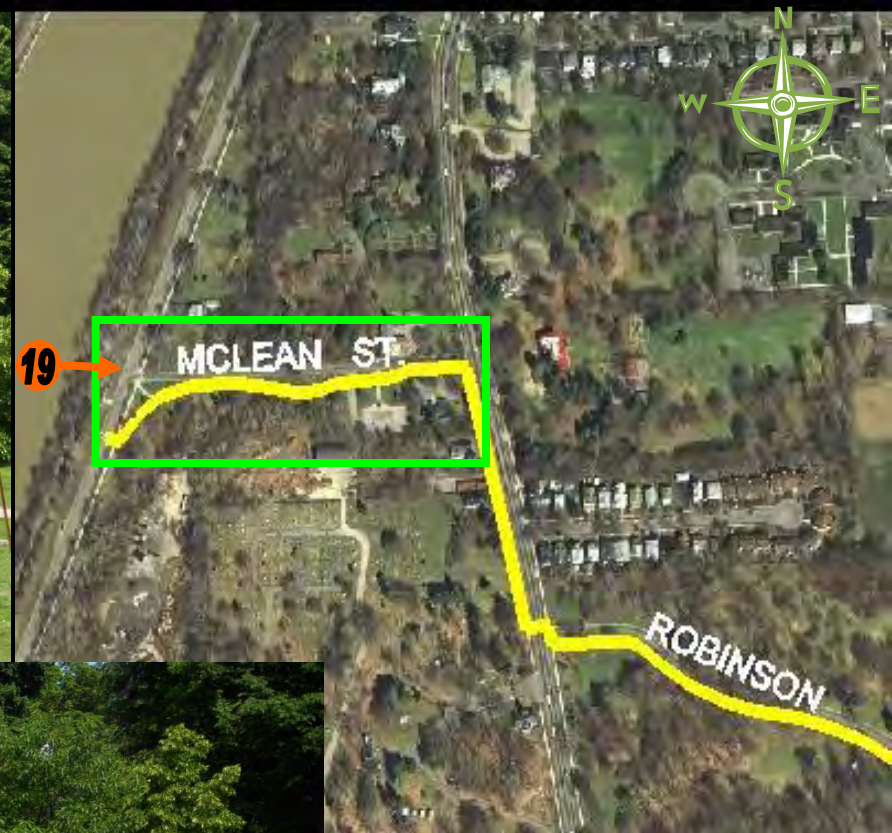


McLean St.

19



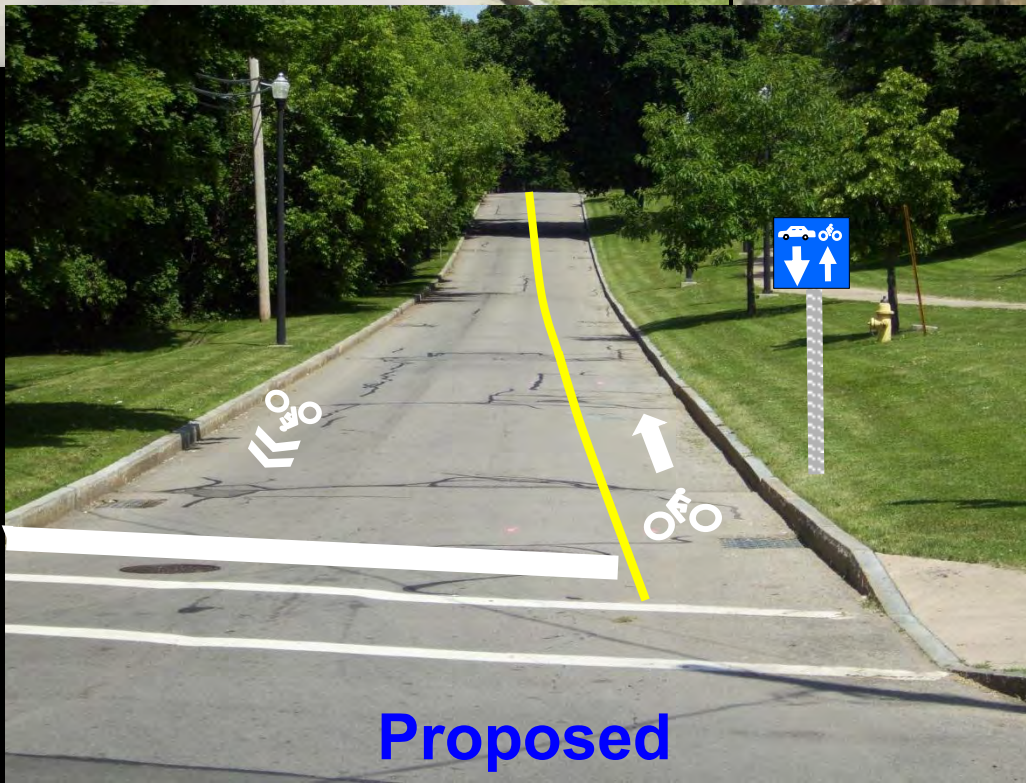
Existing



19

MCLEAN ST.

ROBINSON



Proposed

McLean St.

20



21



Wilson Blvd.

Project Identity

- Trail Name
- Graphic Identity
 - Logo
 - Interpretive Features
- Way-finding Signage
- Informational Kiosks

Graphic Identity / Interpretive Features



Graphic Identity & Way-Finding

MAPLE AVENUE

- AUBURN TRAIL ►
 - Pedestrians Use Sidewalk
 - Cyclists Share the Road
- RESTAURANTS/SHOPPING ►
- BIKE SHOP ►
- RUNNING/WALKING SHOP ►
- GANONDAGON STATE ►
 - HISTORIC SITE



Graphic Identity / Interpretive Features



Graphic Identity / Interpretive Features

Willie Walker Lightfoot
"Keeper of the Avenue"



Willie Walker Lightfoot lived and worked on Jefferson Avenue from 1954 to 2001.

Athlete, community leader, father, elected official, friend, grandfather, musician, mentor... for over 50 years, Willie was a strong voice for SouthWest Rochester, and the "Keeper of the Avenue".



Kiosk



Project Schedule

- Submit Draft Design Report → August 2011
- Public Info Meeting → Oct. 18 & Nov. 2, 2011
- Final Design Report & Approvals → Nov. 2011-Jan. 2012
- Final Design & ROW → Jan. - March 2012
- Bid and Award Project → March 2012
- Trail Construction → 2012 Construction Season

Questions

