

# GENESEE VALLEY PARK WEST

## 2013 MASTER PLAN



### COMMUNITY MEETING #1 May 9, 2013

This document was prepared for the New York State Department of State,  
Division of Coastal Resources, with funds provided under Title 11 of the  
Environmental Protection Fund.

Bayer Landscape Architecture, PLLC

LaBella Associates

Bero Architecture

Moffatt & Nichol

Dr. Charles Beveridge

# Community Meeting #1

---

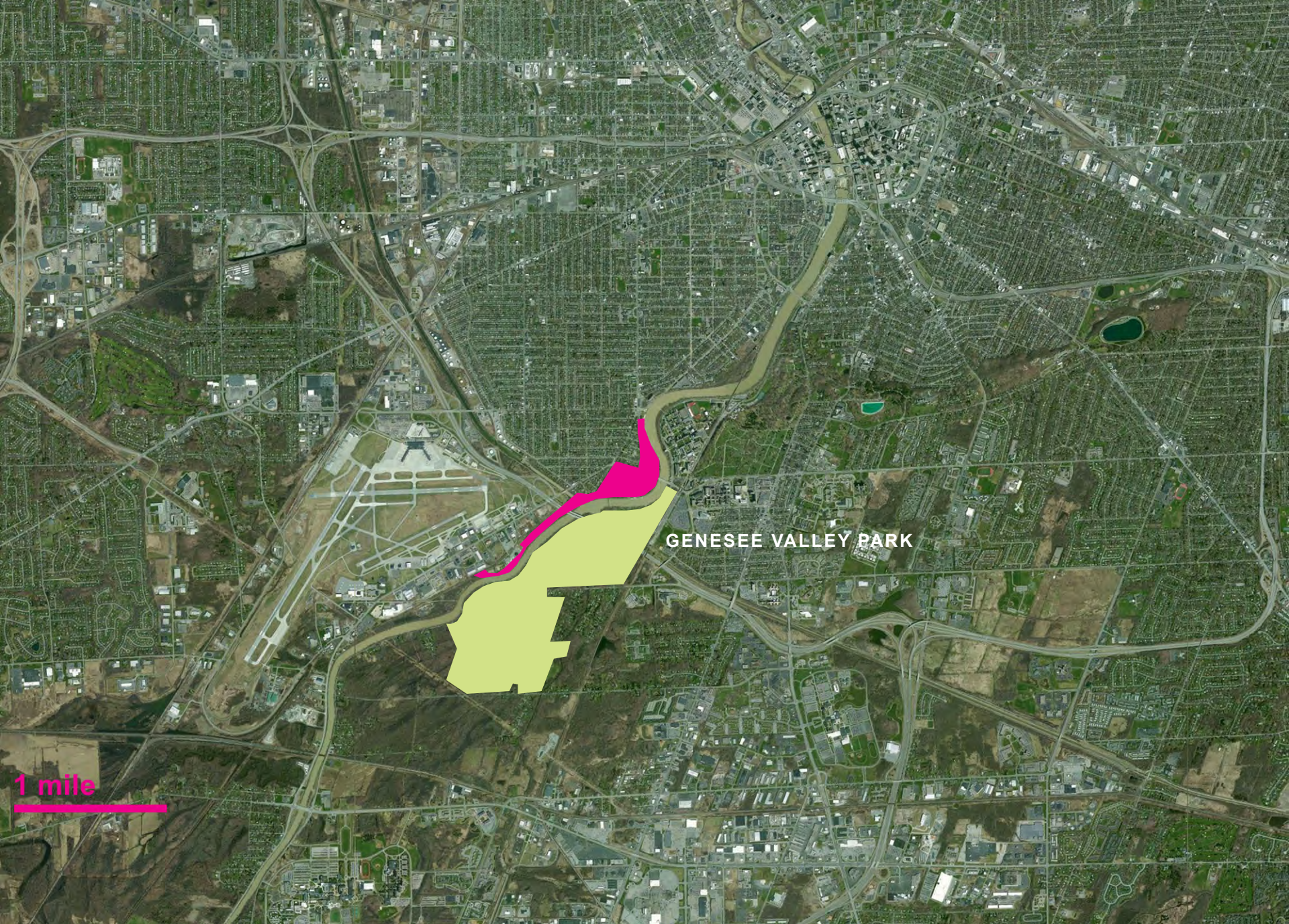
- 1 Project Overview / Scope**
- 2 Brief Inventory and Analysis**
- 3 Next Steps**
- 4 Breakout Discussions / Stations**

# 1 Project Overview / Scope

## Master Plan Process



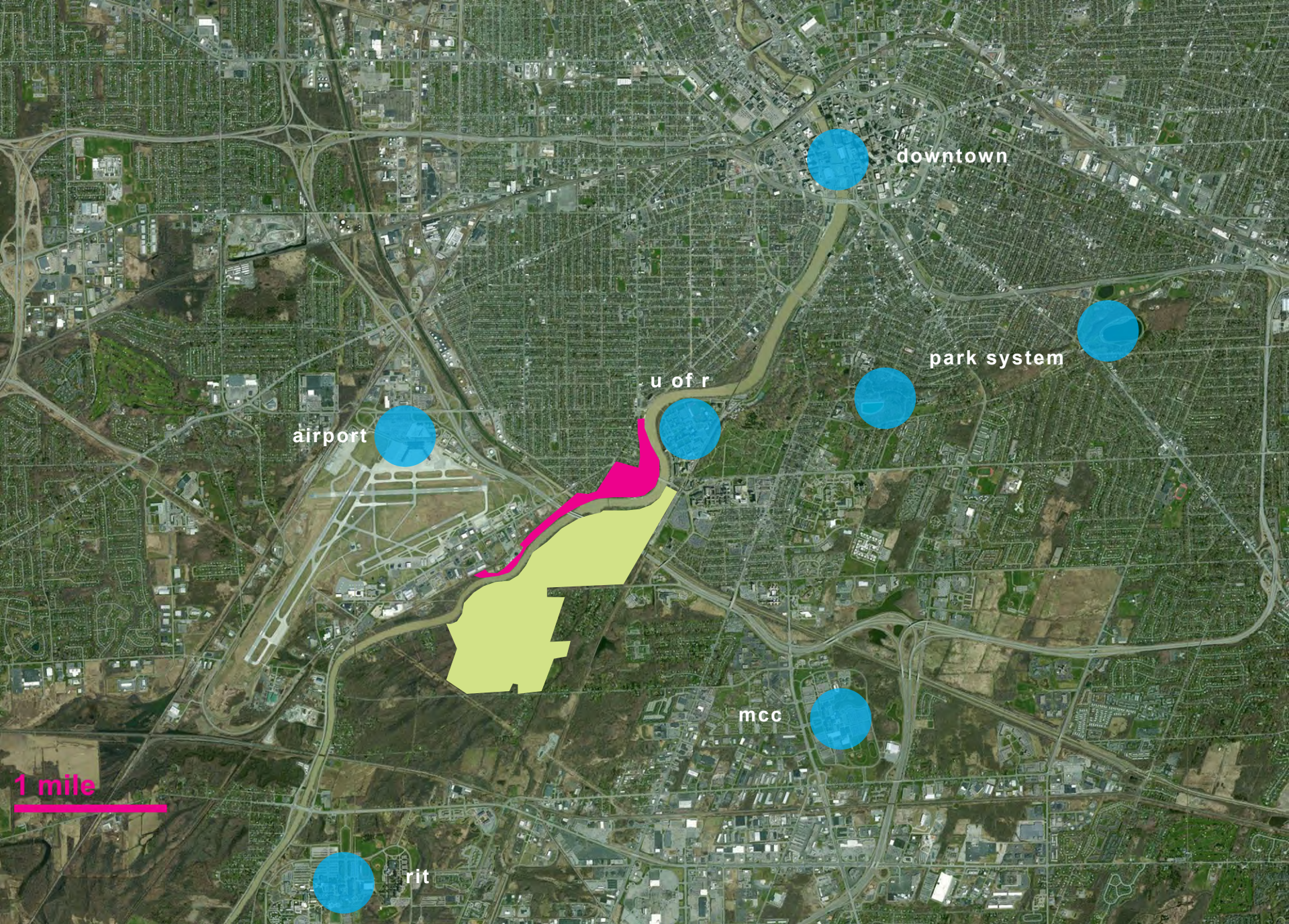




GENESEE VALLEY PARK

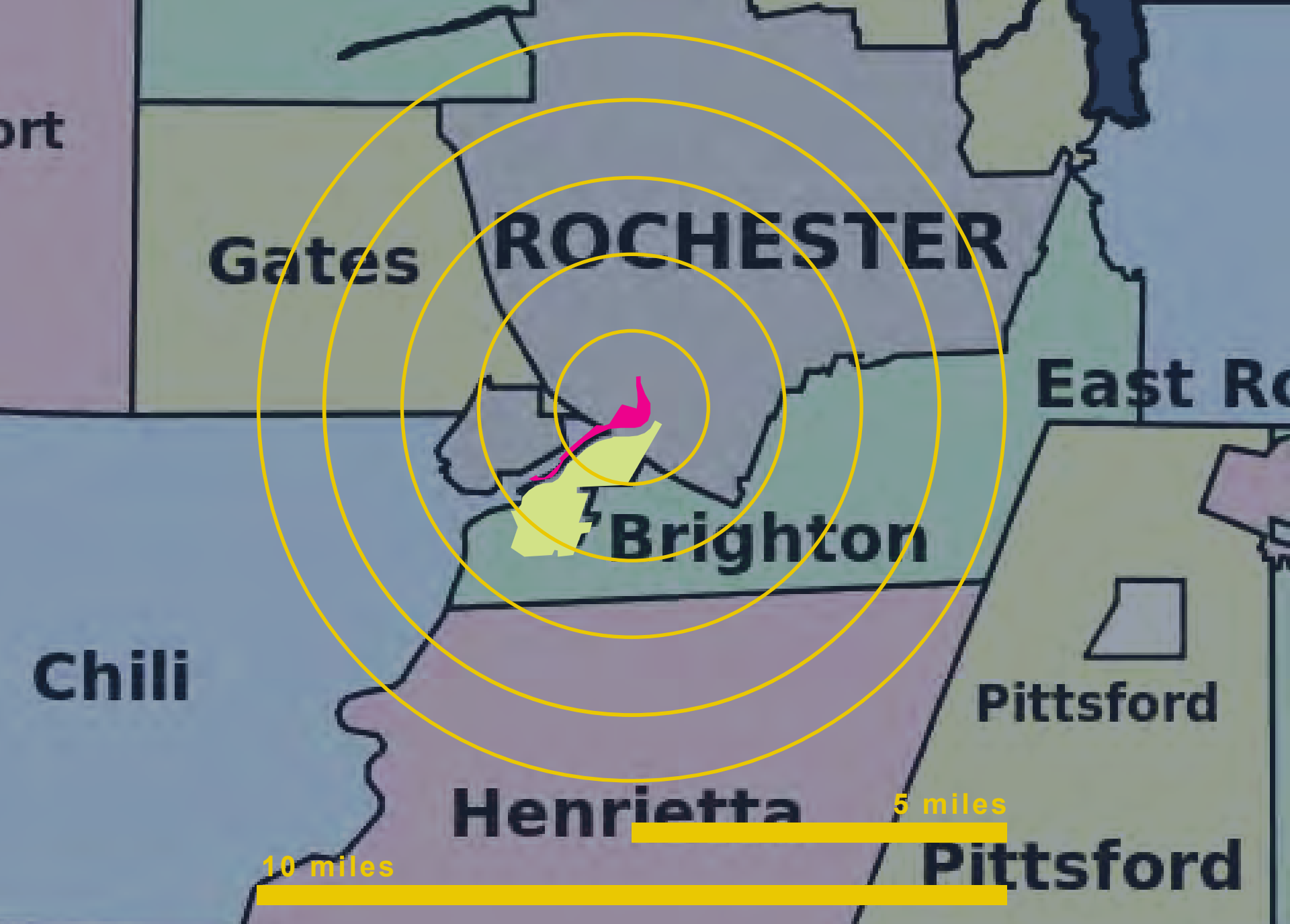
1 mile





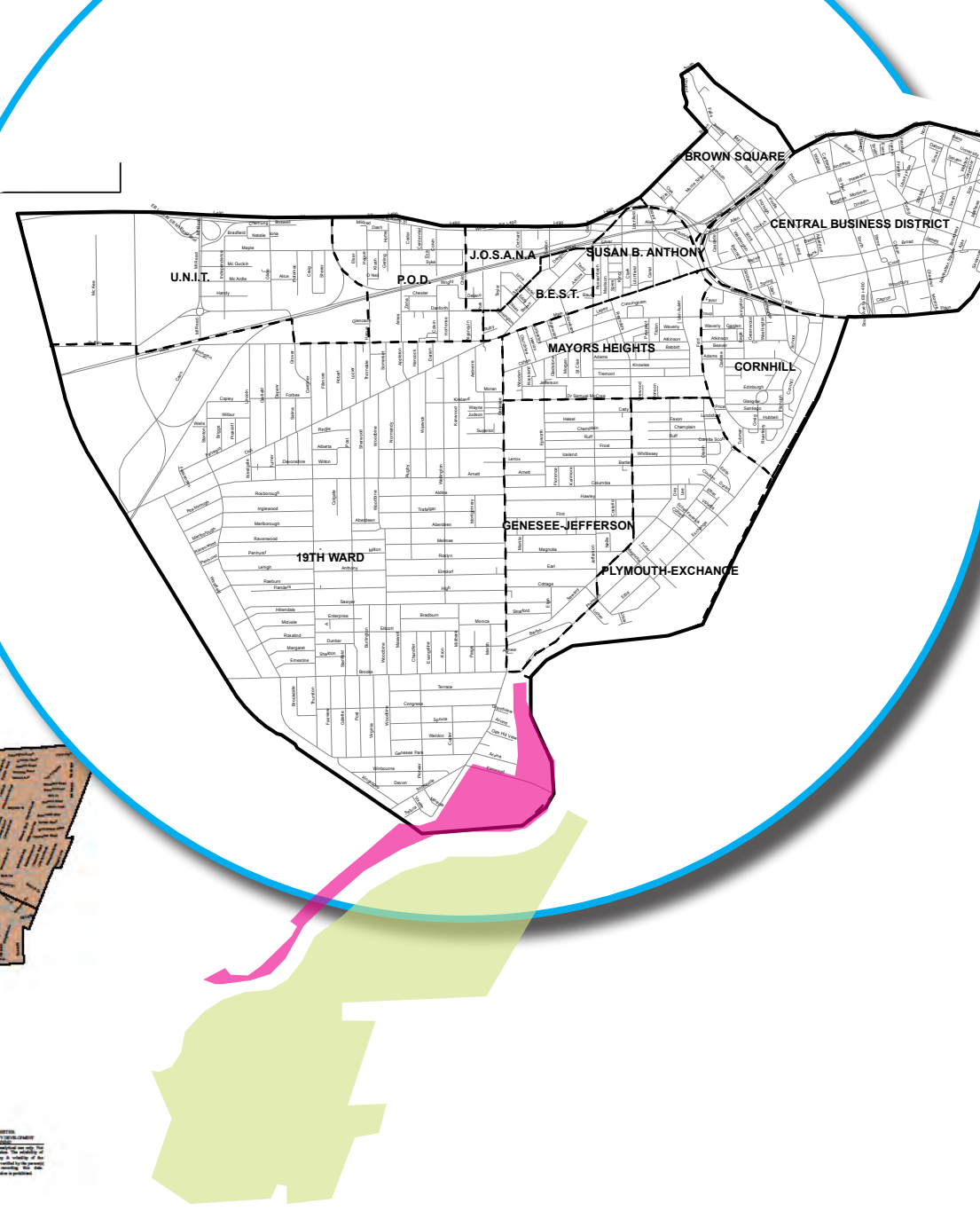
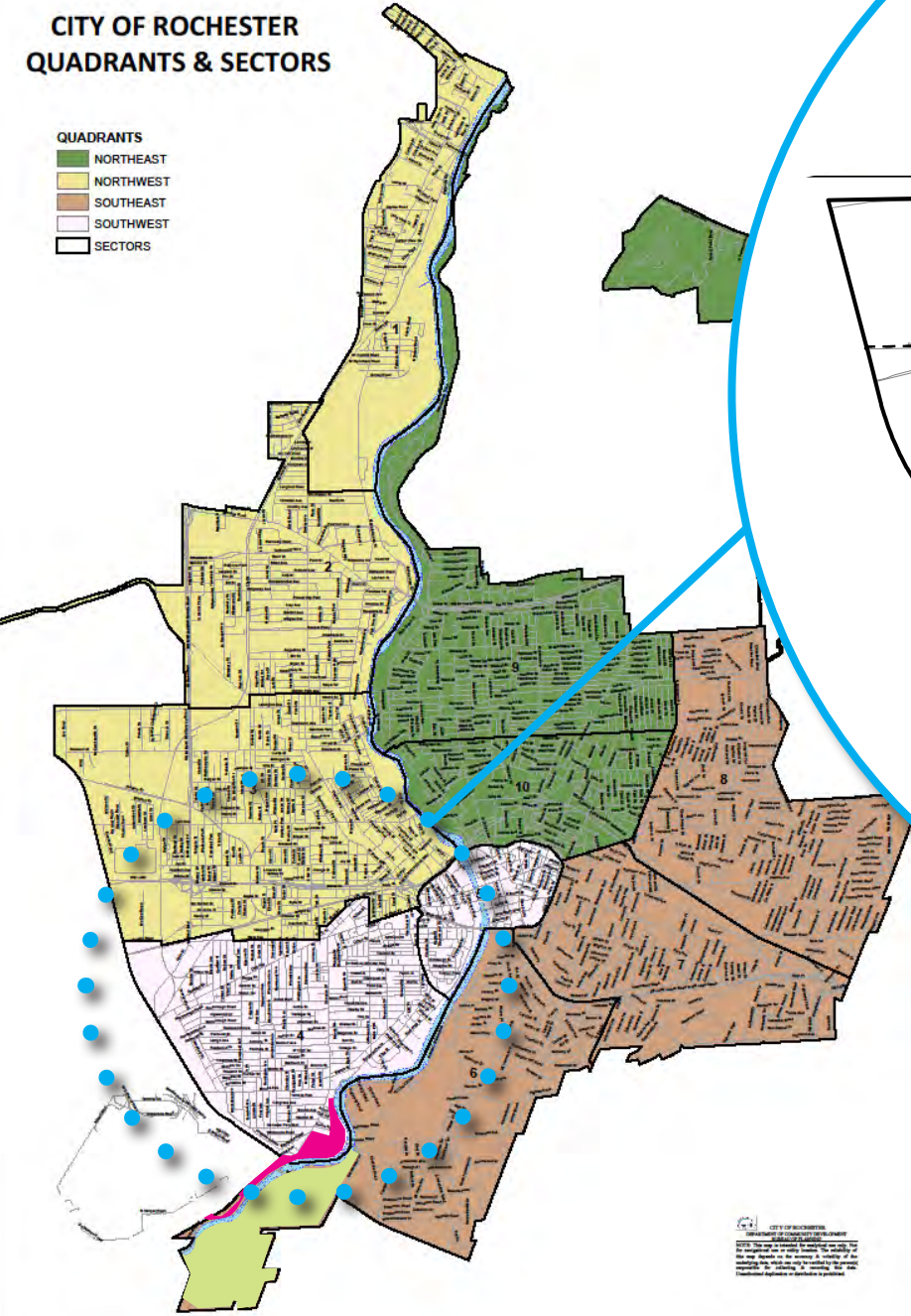
1 mile





# CITY OF ROCHESTER QUADRANTS & SECTORS

- QUADRANTS
- NORTHEAST
  - NORTHWEST
  - SOUTHEAST
  - SOUTHWEST
  - SECTORS









# 2 Inventory & Analysis

---

## **Neighborhood Characteristics**

Demographics / Development / Institutions / Land Use-Controls

## **Park Features & Use**

## **Circulation & Parking**

Vehicular / Bike / Pedestrian

## **Buildings**

## **Visual / Views**

## **Vegetation**

## **Hydrology / Natural Resources**

## **Utilities**

## **Cultural Landscape / Park History**





300 FT



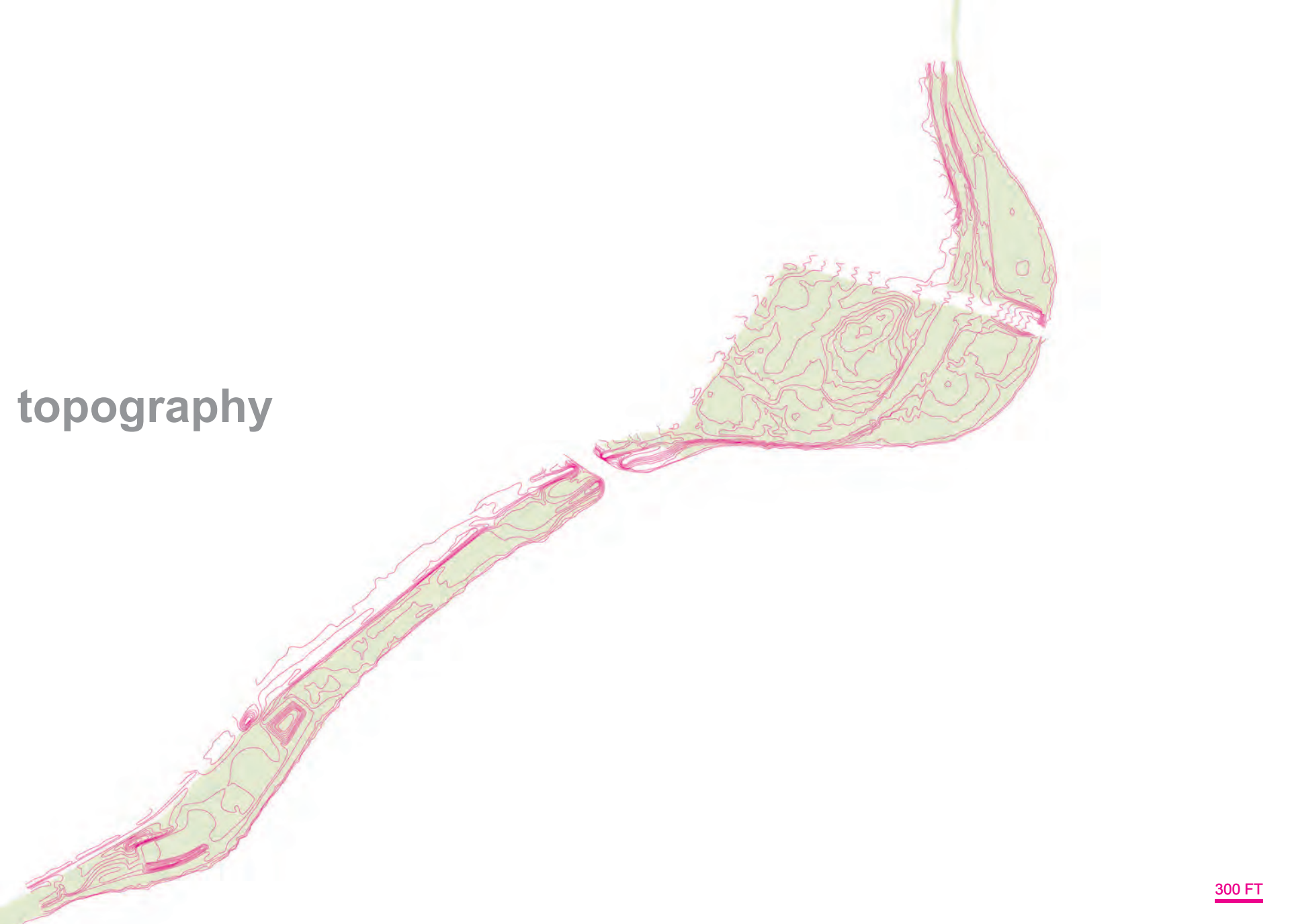
park  
existing  
conditions



300 FT



topography



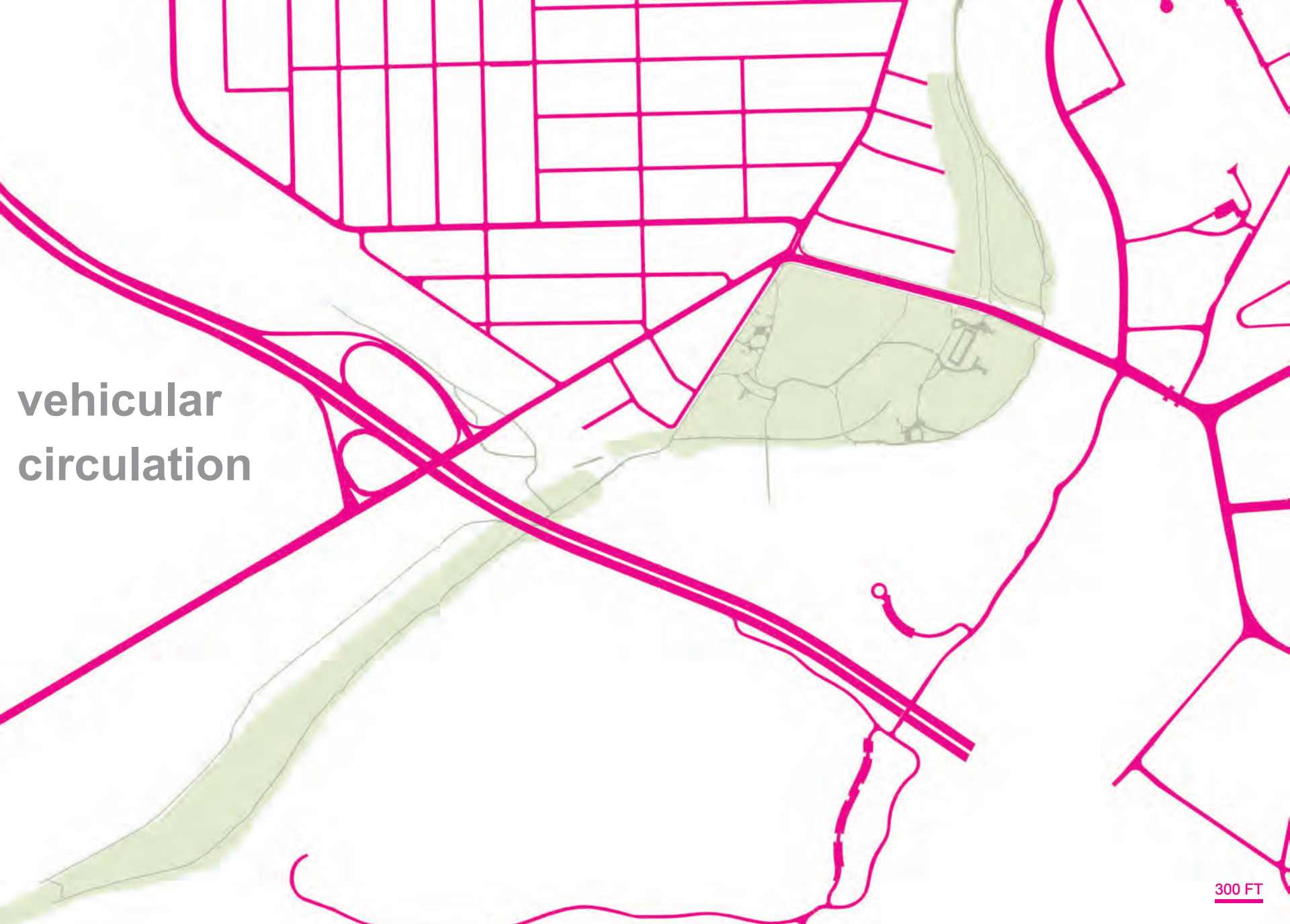
300 FT

pedestrian / bike  
circulation



300 FT





**vehicular  
circulation**

300 FT



vehicular  
circulation  
(park)

300 FT





water

300 FT





buildings

300 FT





300 FT



furnishings,  
fencing &  
equipment

300 FT



vegetation

300 FT

**water**

**BUFFALO**

ALBANY

## CONFLUENCE

## regional bike routes

## Genesee Valley Park West

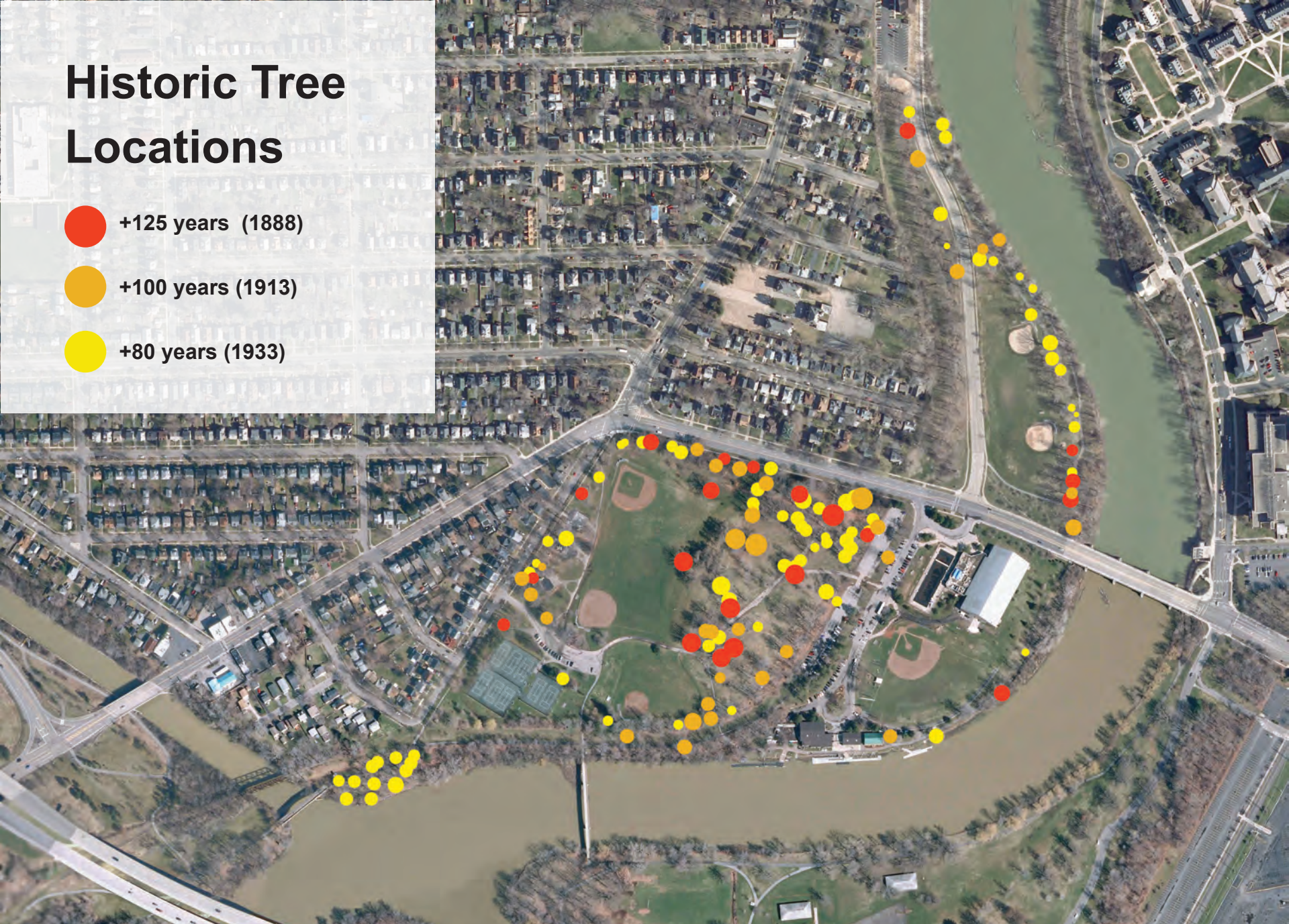






# Historic Tree Locations

-  +125 years (1888)
-  +100 years (1913)
-  +80 years (1933)





# Cultural Landscape / History

---

## **Pre-History**

## **Pre-European Settlement**

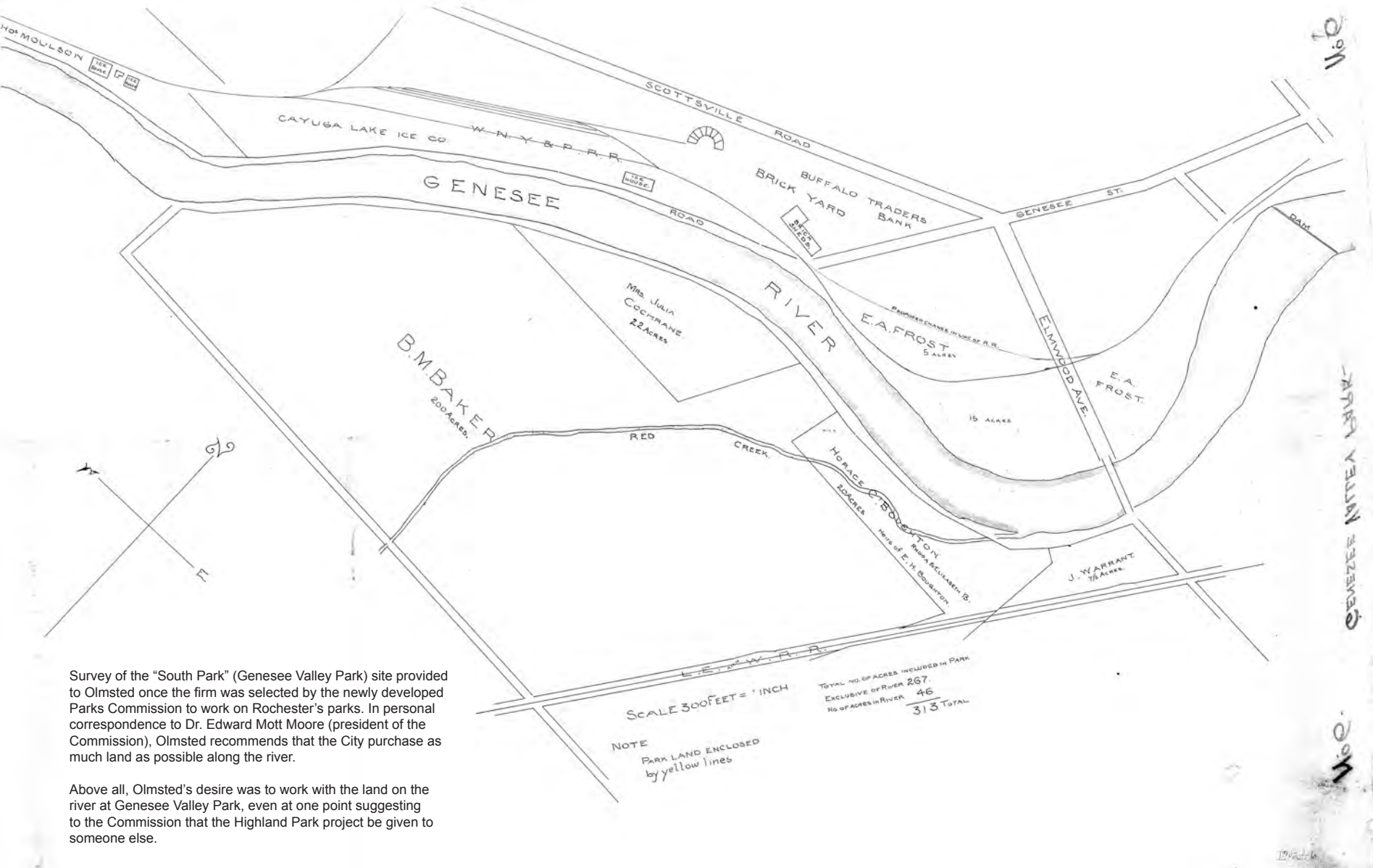
## **1870s Settlement / Genesee Valley Canal Era**

## **1890s Olmsted / Parks Commission** (GVP “Pleasure Ground”)

## **1900-1929 “Reform Park” Era**

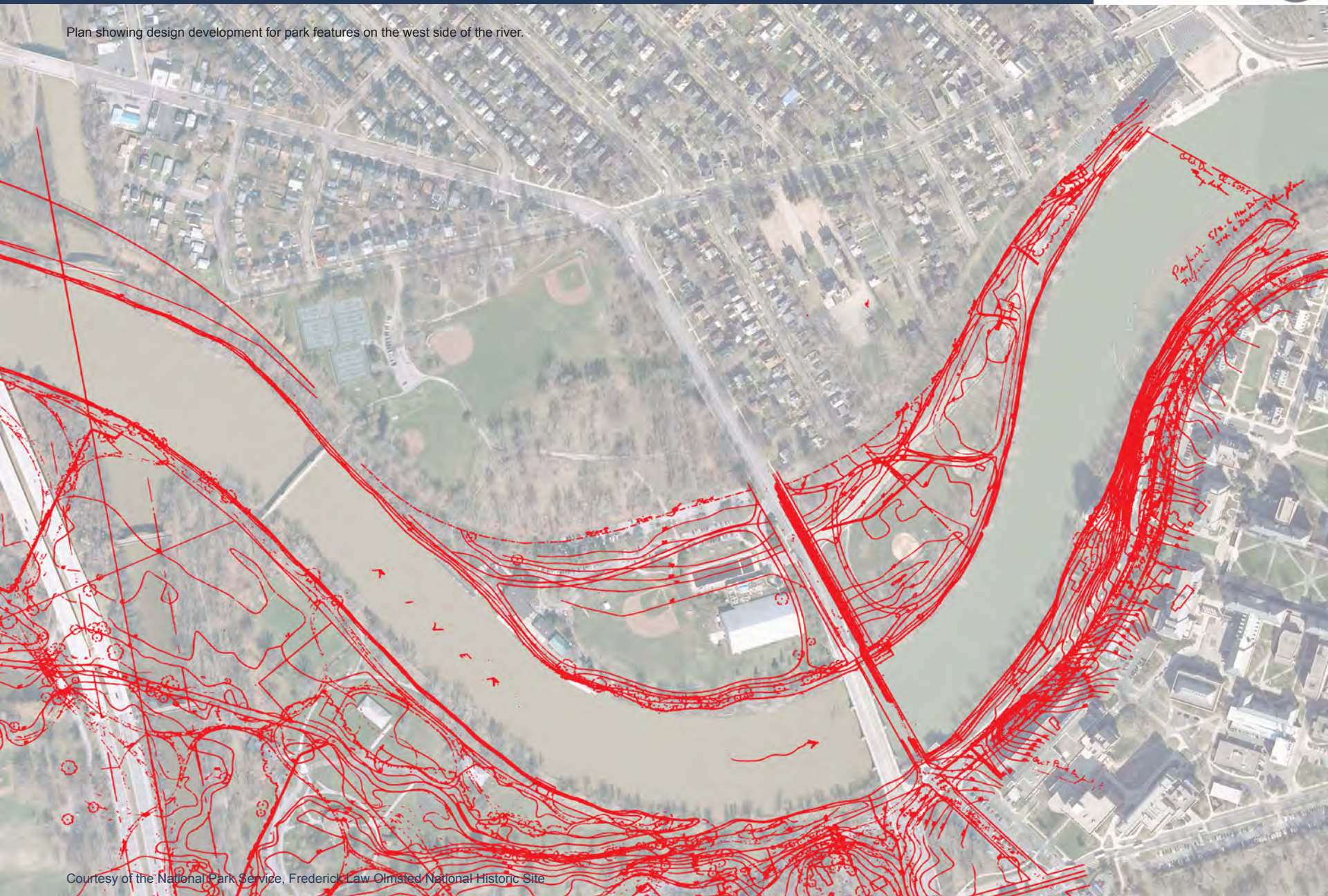
## **1930-1965 “Recreation Park” Era**

## **1970+ Contemporary Park / Recreation**



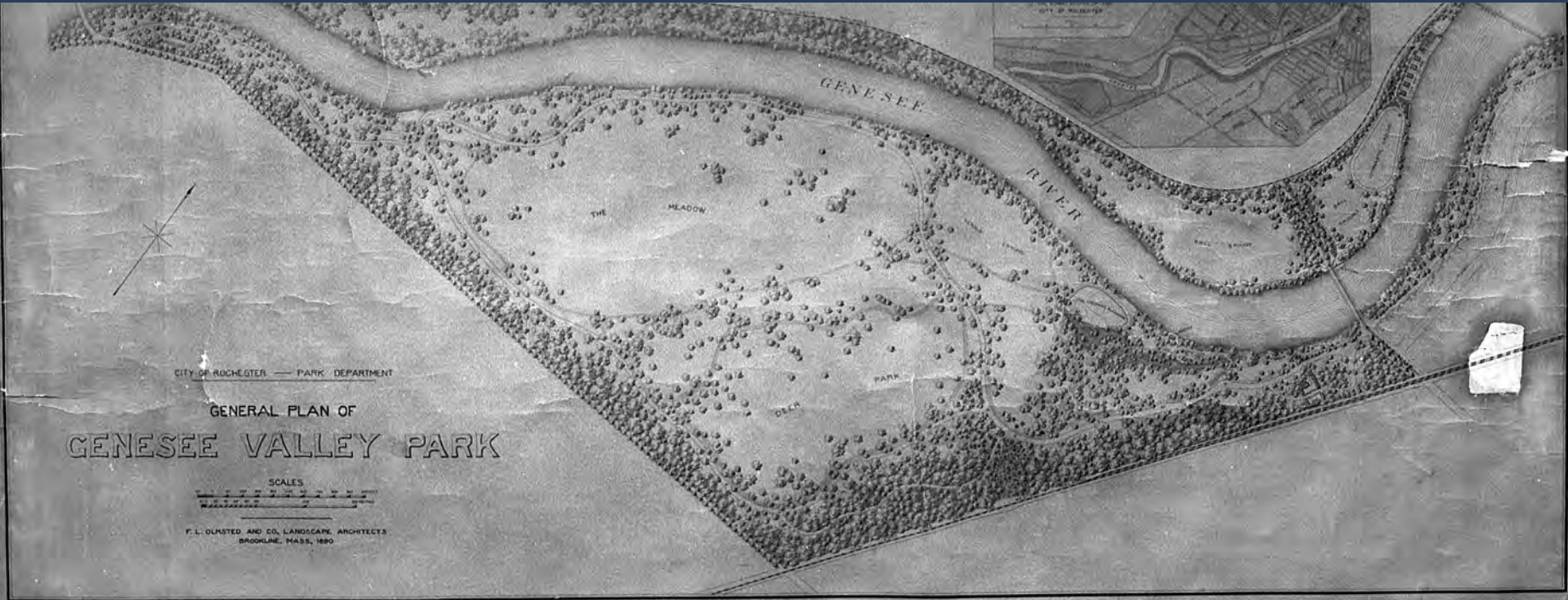


Plan showing design development for park features on the west side of the river.



Courtesy of the National Park Service, Frederick Law Olmsted National Historic Site





For the western "recreational" component of the planned Genesee Valley park, the 1890 General Plan included ball fields south of Elmwood Avenue and clustered the high-intensity recreational infrastructure (such as boat houses, track and field sports and other structures) north of Elmwood. This arrangement was meant to preserve the wide river plain vistas of the pastoral river plain - experienced both east and west across the Genesee River.

The idea is consistent with Olmsted's design principles, including promoting the soothing pastoral experience, management of views and the subordination of individual park elements to the overall broader design.

Courtesy of the National Park Service, Frederick Law Olmsted National Historic Site





Enlargement of 1890 General Plan showing intended uses of the western bank of the river, including ball fields south of Elmwood and more intense recreational facilities north of Elmwood.

Courtesy of the National Park Service, Frederick Law Olmsted National Historic Site



1890  
JULY

working drawing  
(athletic grounds and boat facilities, north of Elmwood Ave)

0' 100' 200' 300' 400'

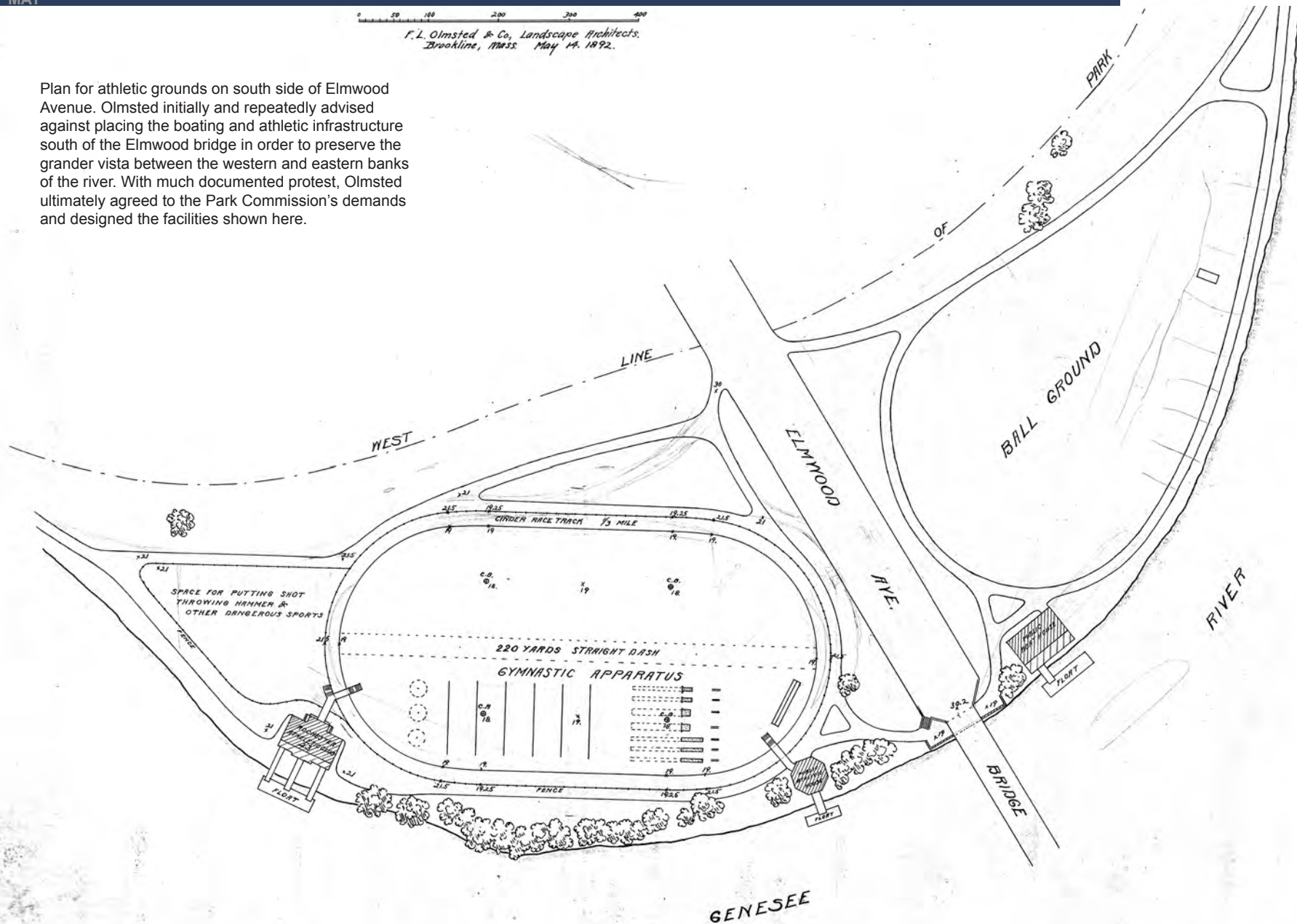
NORTH



Courtesy of the National Park Service, Frederick Law Olmsted National Historic Site



Plan for athletic grounds on south side of Elmwood Avenue. Olmsted initially and repeatedly advised against placing the boating and athletic infrastructure south of the Elmwood bridge in order to preserve the grander vista between the western and eastern banks of the river. With much documented protest, Olmsted ultimately agreed to the Park Commission's demands and designed the facilities shown here.



Courtesy of the National Park Service, Frederick Law Olmsted National Historic Site

c.1900

Photo of track and field area, looking northeast toward public Athletic Club and Elmwood bridge. Photo shows banked track ends, which are sometimes used on indoor tracks to this day. It is thought that a banked track end allows runners to run through a radius more comfortably, with less torque on the body. (Banked ends on GVPW track confirmed on grading plans within the Olmsted drawing records.)



Rochester Public Library, Local History Division



1908

View of "Canoe Clubs" on north side of park,  
looking northwest from Elmwood bridge



United States Library of Congress



Plan showing grading and engineering features (extensive drain tile system) proposed to mitigate impacts of water level rise.

Public Athletic Club  
(original location)

## Pool and Bath House

## Boat Livery

Rochester Athletic Club

## Durand Boat House

## Canoe Clubs

Courtesy of the National Park Service, Frederick Law Olmsted National Historic Site



**GENESEE VALLEY PARK  
ACCOMMODATIONS  
FOR GOLFERS NORTH OF FARGO**

**SALE OFFER**

Over 200 Acres  
Golf Course  
Resort  
Clubhouse  
Restaurant  
Bar  
Tennis Courts  
Swimming Pool  
Homesite  
Paved Driveway  
Private Road Access





**1912**

Photos from Olmsted records, annotated by Olmsted design team in order to show water level rise impacts on shoreline vegetation. Red line is original to images and represents anticipated water level increase of +/- 5.75'.

Courtesy of the National Park Service, Frederick Law Olmsted National Historic Site

By G.Gibbs 2-12

1102-13

POPLARS AND WILLOWS AT EL. 513-514 AT TOE OF SWIMMING POOL EMBANKMENT. ARE NOT FAR ENOUGH BACK OF POOL LINE TO ALLOW A NATURAL BEACH TO FORM, SHOULD BE CORRECTED.



By G.Gibbs 2-12

1102-14

TWO ELMS., ONE PROBABLY SAFE FAIR PROTECTION EVEN AT NEW LEVEL.



By G.Gibbs 2-12

1102-22

77' ELM 510-516 WILL SUFFER AND PROBABLY DIE, WOULD BE SAVED IF DAM AND PUMP IS PUT IN BELOW THIS POINT. TOP SHOWN IN 1102-18



Canoe Club buildings, as seen from Elmwood bridge during flood conditions

**1913**

Rochester Public Library, Local History Division



Flood damage to Durand Boat House, view looking south along river edge

**1913**







1913



1913



1915 Athletic Club (public)  
after relocation to street car loop area



1916



View of flooded river from Elmwood Avenue bridge (river is in foreground), Durand Boat House (left) with grandstand in background (located on western side of track field).

Rochester Public Library, Local History Division

1918



Barge Canal meets Genesee River,  
looking west from east bank

1920



"Olmsted" bridge over Barge Canal, railroad  
bridge in background, looking southwest

1920



Rochester Athletic Club  
(private)

View of the Rochester Athletic Club (private), looking north from river

Elmwood Bridge

Rochester Public Library, Local History Division / City of Rochester Archives



1925

City of Rochester Archives



Refectory / Concessions Stand

1930

City of Rochester Archives



Durand Boat House

Elmwood Bridge

Looking west from east bank of river

1930

Rochester Public Library, Local History Division



Genesee River

Rochester Athletic Club

Fishing Club

Boat Livery

Bath House (orig. pool)

View looking south across track and field area, flooded track area used for skating, mechanically flooded via water connection





City of Rochester Archives



1937

Looking northeast to University of Rochester.  
Landscape restoration completed after  
new bridge construction and removal of old  
bridge. Refectory / concessions building  
shown near rail road.



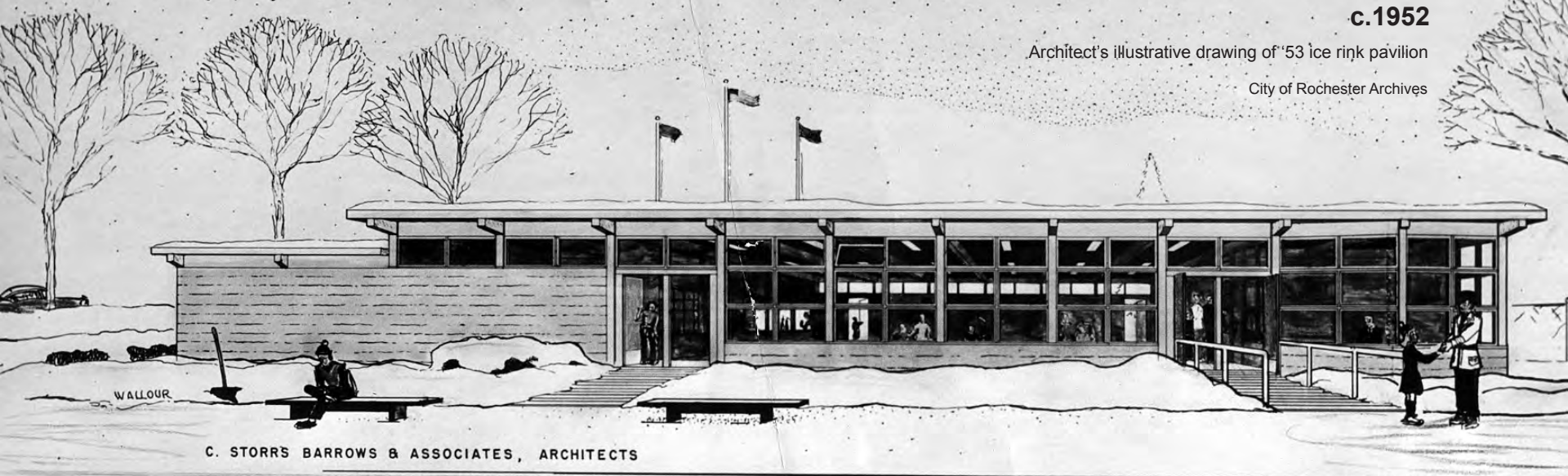
Rochester Public Library, Local History Division



c.1952

Architect's illustrative drawing of '53 ice rink pavilion

City of Rochester Archives



1956

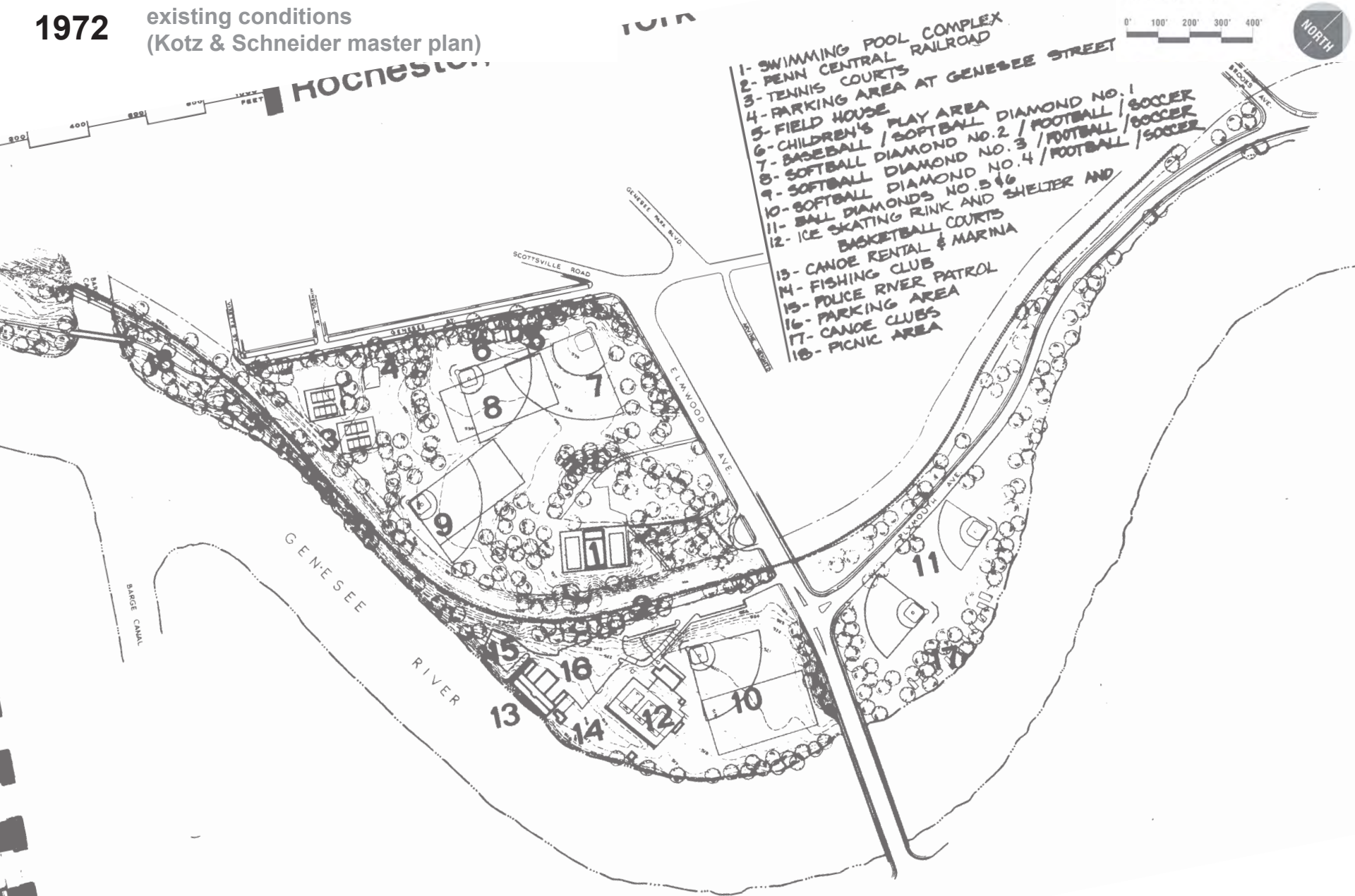
'53 ice rink undergoing repairs in 1956

Rochester Public Library, Local History Division



1972

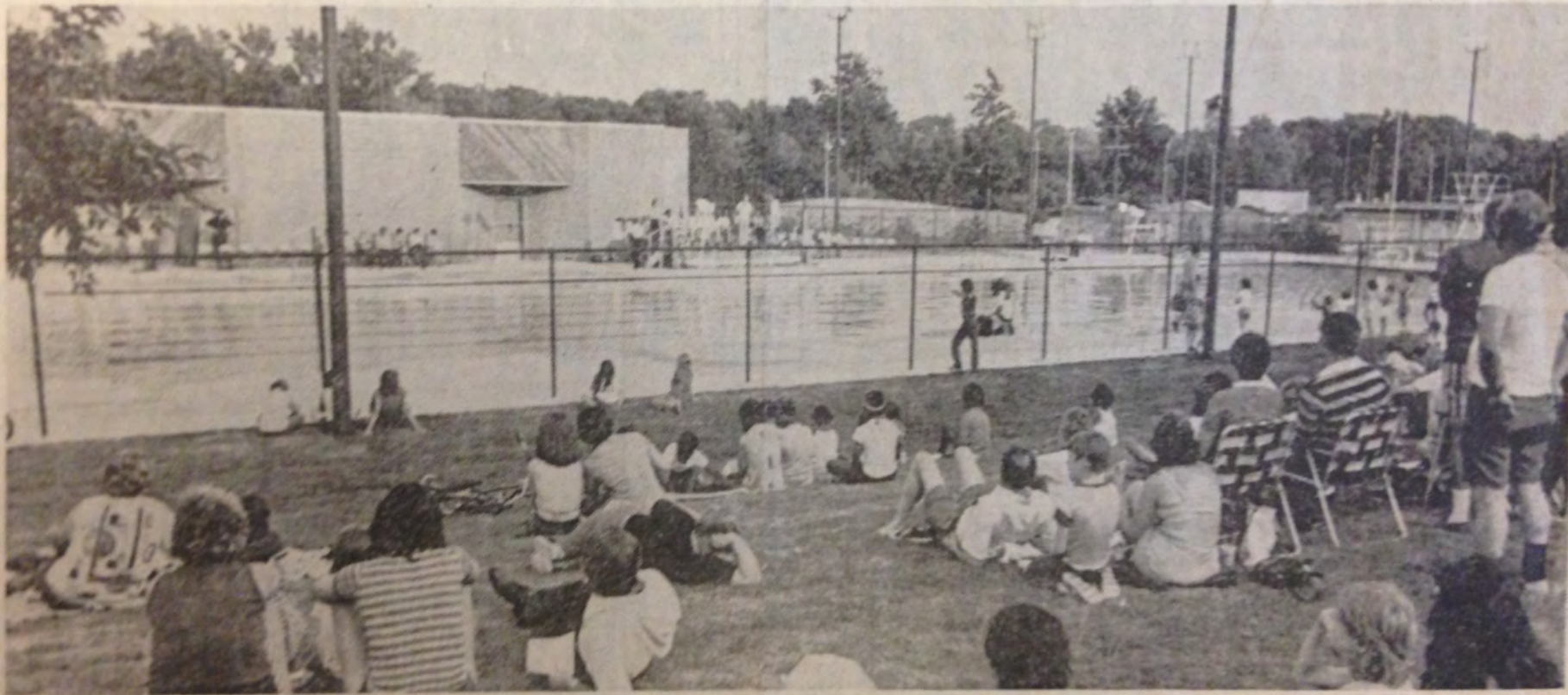
existing conditions  
(Kotz & Schneider master plan)



THE TIMES-UNION

8B Rochester, N.Y., Wednesday Evening, July 6, 1977

# Suburb



Times-Union photo—Bob Gapsky

## Long-Distance Pool

✓ A new pool at Genesee Valley Park, billed by the city as "one of the largest outdoor swimming pools" in the state, opened with ceremonies last night. The pool, 50 by 200 feet, is larger than Olympic size. It is open every day, 9 a.m. to 9 p.m.

Rochester Public Library, Local History Division



# Breakout Discussions

---

## PAST

Cultural Landscape  
Park Development Over Time

## PRESENT

Current Conditions  
Assets and Park Use

## FUTURE

Goals and Program Opportunities  
How Should the Park Be Used?