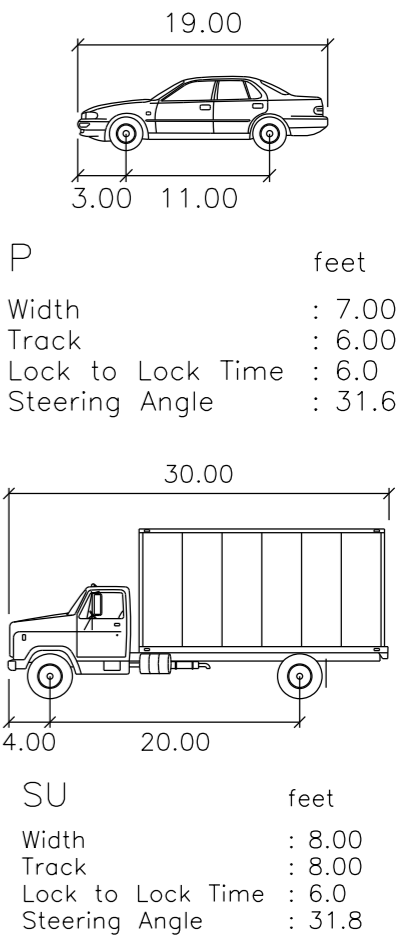


ARLINGTON STREET PARKING ANALYSIS

1. Traffic parking count conducted on:
Thursday October 16, 2014 at 8:15 a.m. - 14 vehicles parked
Saturday October 18, 2014 at 10:00 p.m. - 13 vehicles parked
2. The current parking regulations (east side only) have been in place since 1983.
3. Parking regulations are changed through the Traffic Control Board with a signed petition from at least 60% of the residents.
4. The existing parking is on the east side of the street.
The east side has 15 potential on-street parking spaces.
5. The proposed improvements will provide approximately 22 spaces on the west side of the street.
6. An alternate parking option will provide 22 spaces on the west side of the street on Sunday, Monday, Wednesday and Friday and 15 spaces on the east side of the street on Tuesday, Thursday and Saturday.
7. At least one parking space is lost due to hydrant location.
8. AutoTurn is the software used to analyse vehicle sweep path and vehicle sizes to be able to adequately design roads and site design parameters.

9. The AutoTurn software considers a passenger vehicle to be 19 feet in length. A typical K-D Moving truck is 30 feet. See the vehicle profiles provided.
10. The layout shown assumes a vehicle length of 16 feet with 1 foot of separation between 2 vehicles. When more than 2 vehicles are parked, 3 feet of separation are provided for maneuvering.
11. Additional dimensions are shown to demonstrate the guidelines in the traffic ordinance, noted below.
12. The existing and proposed signage is shown for clarification.
13. Per the City of Rochester Chapter 111: Vehicle and Traffic, Article I: Traffic ordinance, 111-23 Stopping, standing or parking in certain places: No person shall stop, stand or park a vehicle in any of the following places, unless otherwise indicted by official signs, markings or parking meters
 - within 5 feet of a public or private driveway
 - within 15 feet of a hydrant
 - within 30 feet of the approach to any stop or yield sign
 - within 20 of a crosswalk





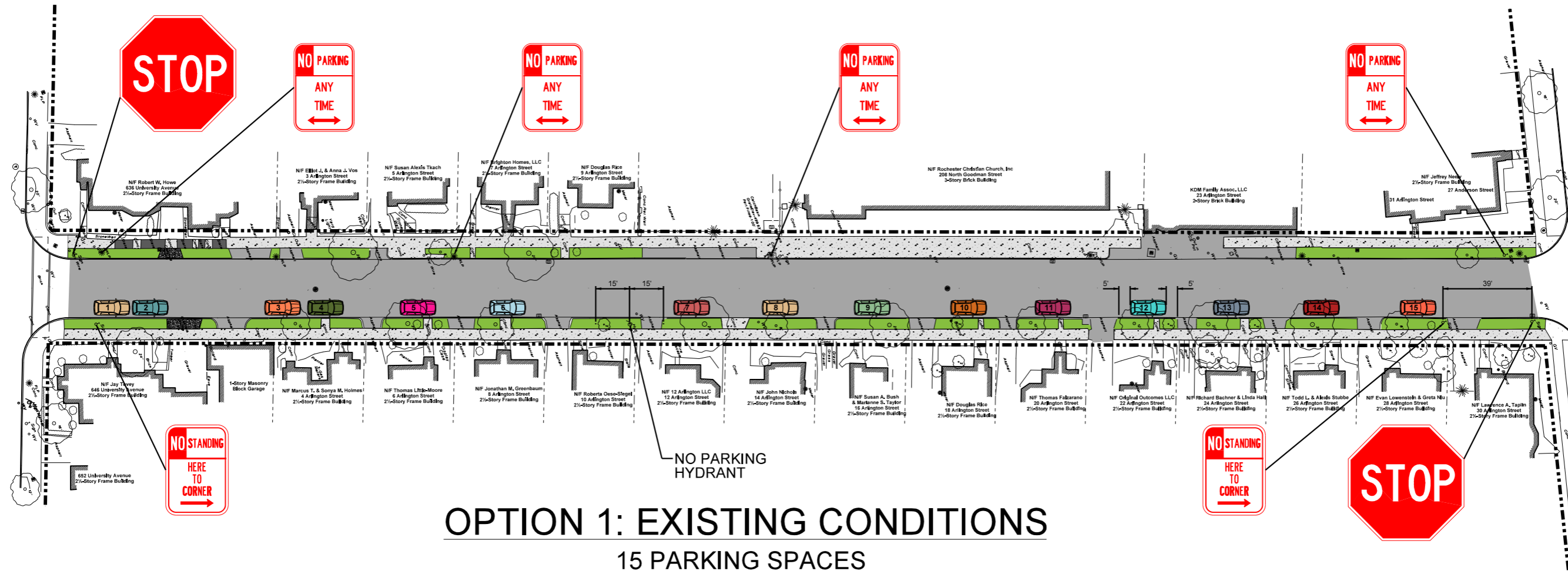
Department of Environmental Services
Bureau of Architecture and Engineering Services
City of Rochester, New York

ARLINGTON STREET



UNIVERSITY AVENUE

ANDERSON AVENUE



OPTION 1: EXISTING CONDITIONS

15 PARKING SPACES

