

# City of Rochester Multi-Site Parks Plan

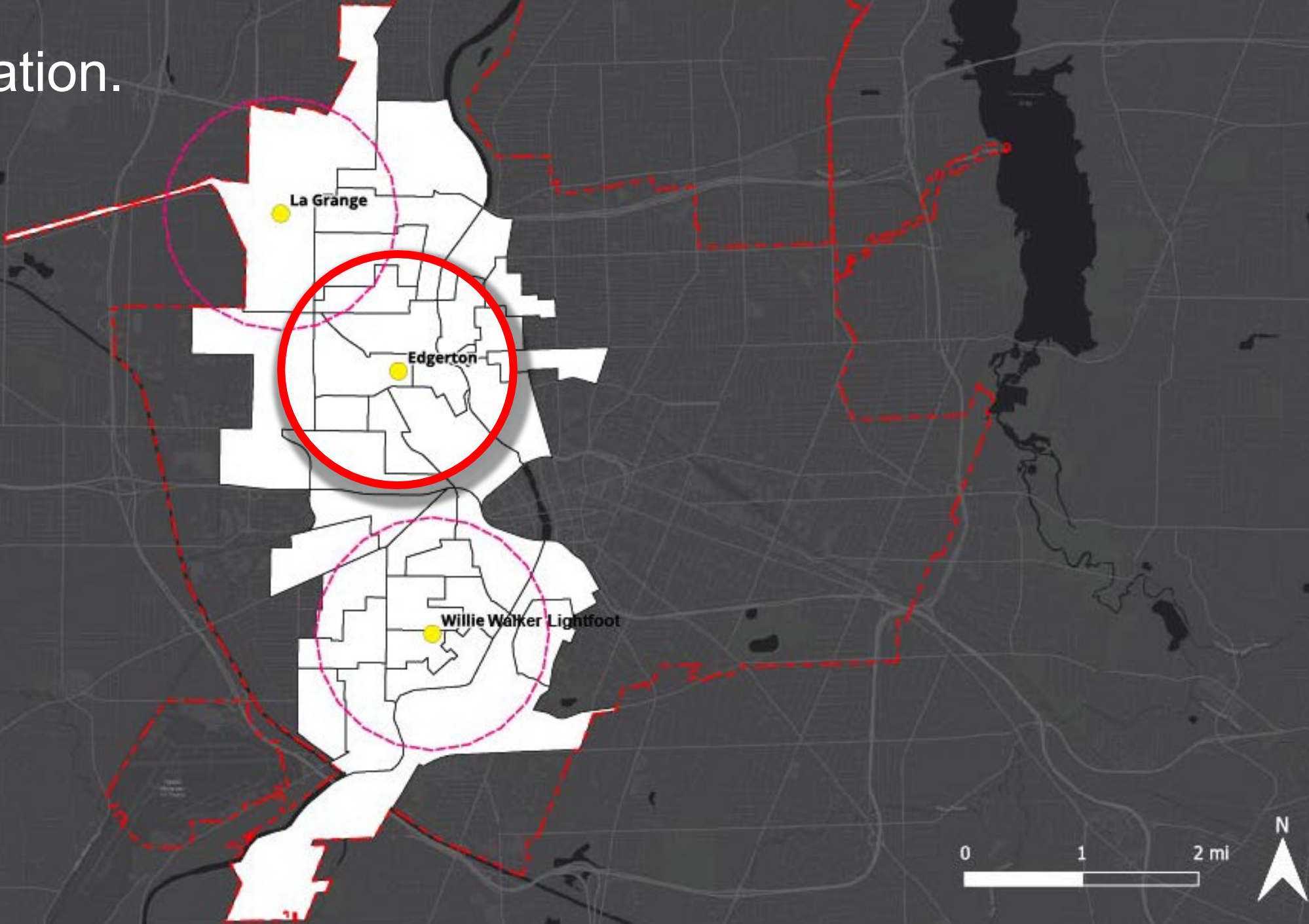
## Public Meeting #1



May 7, 2024

**SWBR**

# Project location.



How we got here.



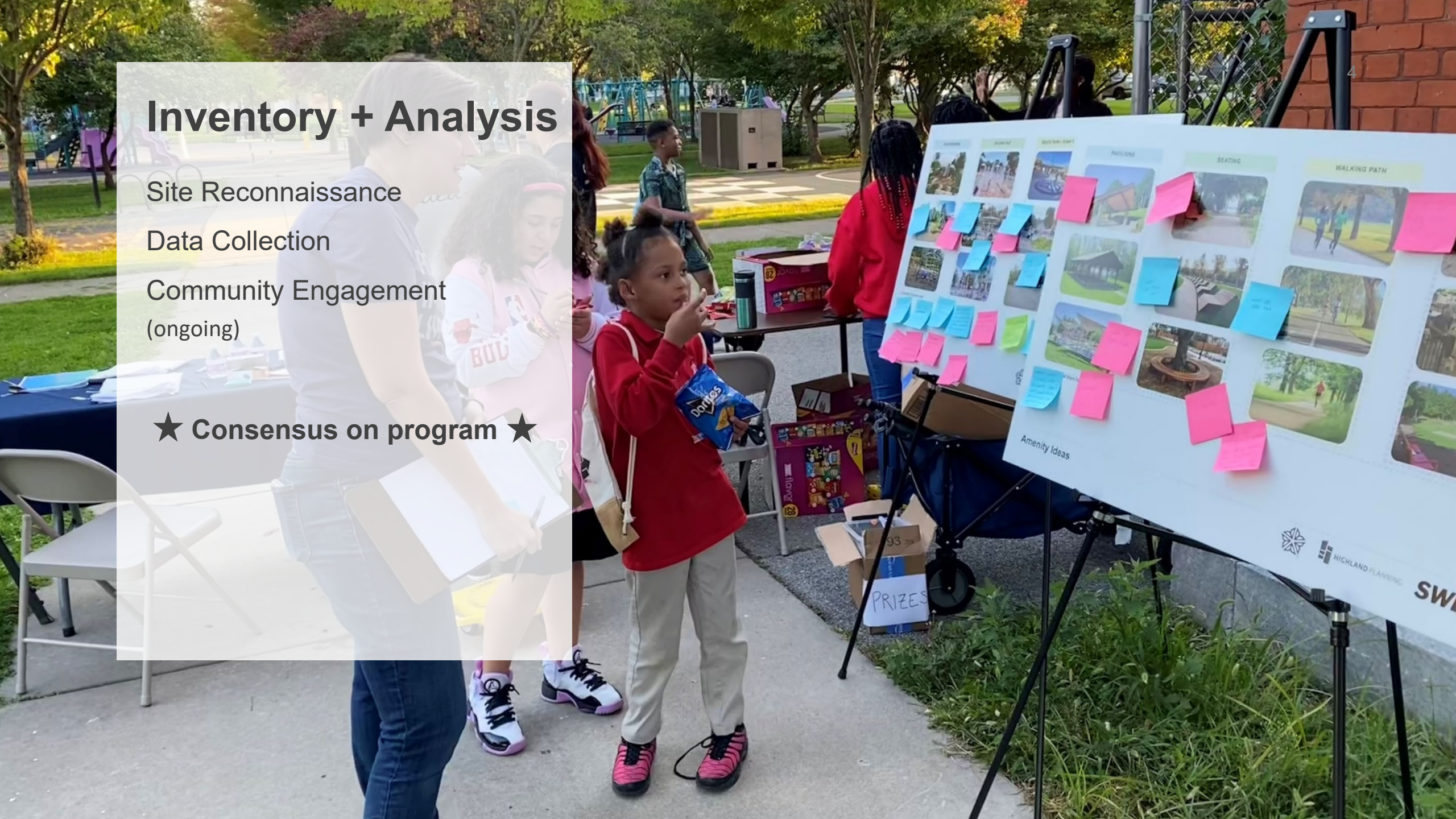
# Inventory + Analysis

Site Reconnaissance

Data Collection

Community Engagement  
(ongoing)

★ Consensus on program ★





# Inventory + Analysis

## Site Reconnaissance

- Landscape Architecture
- Civil Engineering
- Mechanical

PLAYSPACE    PARTICULARS    SEATING    WALKING PATH

Amenity Ideas

HIGHLAND PLANNING SW

PRIZES



# EDGERTON PARK & R-CENTER

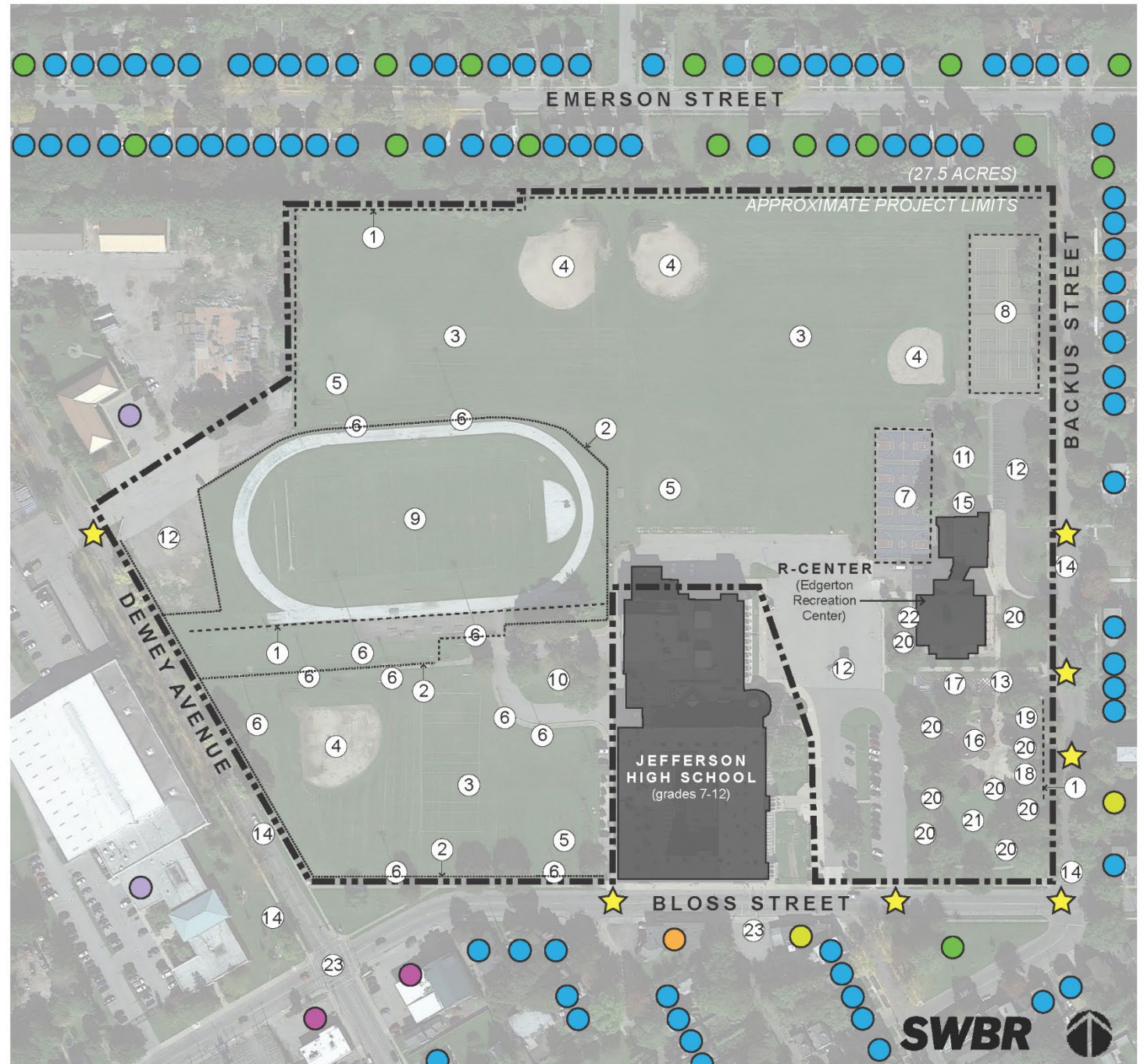
42 Backus Street

## SITE FEATURES

- ★ Park Entrance
- ① Perimeter Chain Link Fencing
- ② Iron Fencing
- ③ Baseball Outfield
- ④ Clay Infield with Backstop
- ⑤ Grass Infield with Backstop
- ⑥ Field Lighting
- ⑦ Basketball Courts with Fence
- ⑧ Tennis Courts with Fence
- ⑨ Track and Football Field
- ⑩ Drop-off Circle
- ⑪ Front Plaza
- ⑫ Parking Lot
- ⑬ Bike Rack
- ⑭ Bus Stop
- ⑮ Adult Fitness Equipment
- ⑯ Playground
- ⑰ Games Courtyard
- ⑱ Splash Pad
- ⑲ Underground Mechanical Vault
- ⑳ Seating / Picnic Tables
- ㉑ Tree Cover
- ㉒ Old Games Court/Garden
- ㉓ Crosswalk

## NEIGHBORHOOD CONTEXT

- Residential Property
- Commercial Property
- Vacant Commercial
- Vacant Lot
- Municipal/Community Services
- Faith Center





# EDGERTON PARK & R-CENTER

42 Backus Street

## SITE ANALYSIS:

### ACCESS

1. Fences block access between track and fields
2. Entrance along Dewey Ave. not visible from street
3. Fences block access at corner of Dewey Ave and Bloss St.
4. Shared parking with school, but not clear public is allowed to park there

### CIRCULATION & ACCESSIBILITY

5. Crosswalks not present in key locations across streets
6. Walking paths are in poor condition, some tripping hazards
7. Bike racks available on site
8. Restrooms available in R-Center, but not easily accessible from site
9. Cars prioritized over pedestrians around school, no clear walking route across school parking lot to park activities

### PLAY & SPLASH PAD

10. Playground surface in good condition. Playground equipment in good condition, with only minor repairs needed
11. Some splash pad equipment needs repair or replacement
12. Underground mechanical vault at risk of flooding
13. Games court allows for additional play opportunities

### SOCIAL SPACES

14. Lots of seating around playground and splash pad
15. Grills and picnic tables available
16. No covered seating or gathering space near play areas
17. No seating around basketball court or ball fields, scattered bleachers at track are in disrepair

### GREEN SPACE

18. Mature trees around site provide shade and enclosure
19. Open spaces in front of R-Center and around historical kiosk are lacking activity features
20. Garden beds created behind R-center in old game court, educational opportunity, potential to expand

### ATHLETICS

21. Baseball fields overgrown with grass
22. Basketball surface in fair condition
23. Workout equipment functional, but limited and isolated
24. Track and field event surfaces in very poor condition
25. Tennis courts are underutilized

### SAFETY

26. No lighting at most baseball fields, basketball or tennis courts
27. No lighting in playground
28. Fencing is unwelcoming and reduces pedestrian circulation in and out of park





# Inventory + Analysis

Data Collection

Mapping:

- Age
- Disability
- Income
- Tenure
- Race
- Land use
  
- Athletics + Participation

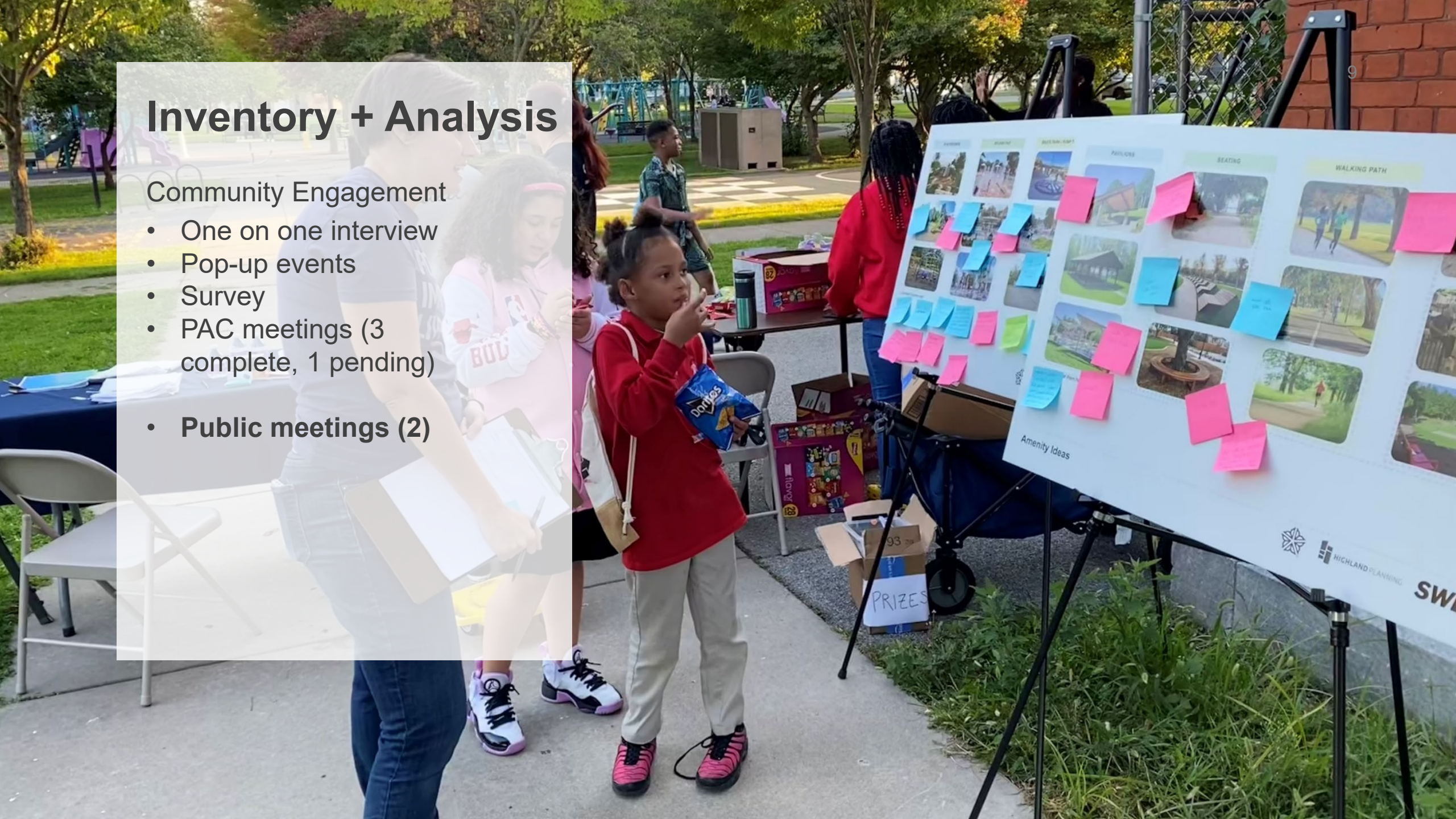




# Inventory + Analysis

## Community Engagement

- One on one interview
- Pop-up events
- Survey
- PAC meetings (3 complete, 1 pending)
- **Public meetings (2)**

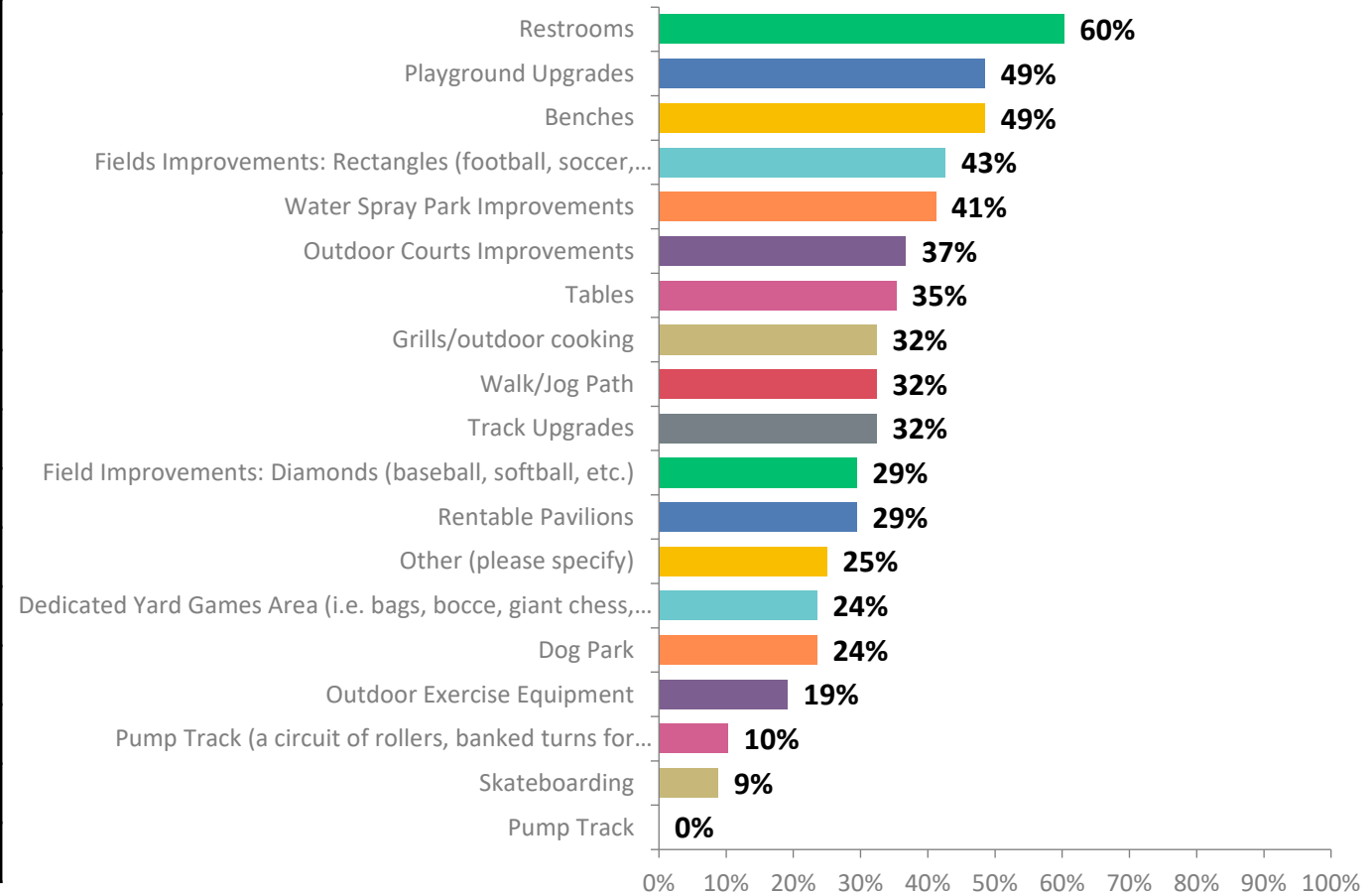




## Edgerton Park Participation national vs. site specific








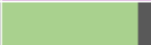









Outdoor Activities	Park Average	National Average	2023 Population
Baseball	3.8%	3.7%	863
Basketball	7.9%	7.6%	1,811
Exercise Walking	35.3%	37.3%	8,103
Football (flag)	2.2%	1.9%	513
Football (tackle)	2.0%	2.2%	459
Football (touch)	2.9%	2.7%	672
Lacrosse	1.1%	0.8%	262
Pickleball	1.7%	2.1%	386
Running/Jogging	14.4%	14.8%	3,293
Skateboarding	1.9%	2.1%	443
Soccer	4.5%	4.6%	1,042
Softball	2.8%	3.1%	648
Tennis	4.2%	4.7%	959

## Q5: What amenities would you like to see at Edgerton Park? (Select all that apply)





# Summary: Edgerton Park

	Survey	Pop-up Event	City staff Scoping	PAC Meeting #1	Stakeholder Interviews
Restrooms		★			
Playground Upgrades		★	★		
Benches		★			
Field Improvements (football, soccer, lacrosse)			★	★	
Water Spray Park Improvements		★	★		★
Outdoor Court Improvements (basketball, tennis)		★	★	★	
Tables					
Grills/outdoor cooking		★			
Walking/Jogging Path		★			★
Track Upgrades			★	★	
Fields Improvements (baseball, softball)			★	★	
Rentable Pavilions					
Dedicated Yard Games		★			
Dog Park					★
Outdoor Exercise Equipment		★			
Pump Track					
Skateboarding		★			
Lighting Improvements	<i>Not in survey</i>			★	★
Neighborhood Connections	<i>Not in survey</i>		★	★	★
Wayfinding/Parking Signage	<i>Not in survey</i>		★	★	★
Improve Vehicular Circulation	<i>Not in survey</i>		★	★	



# Design Alternatives.



# EDGERTON PARK & R-CENTER

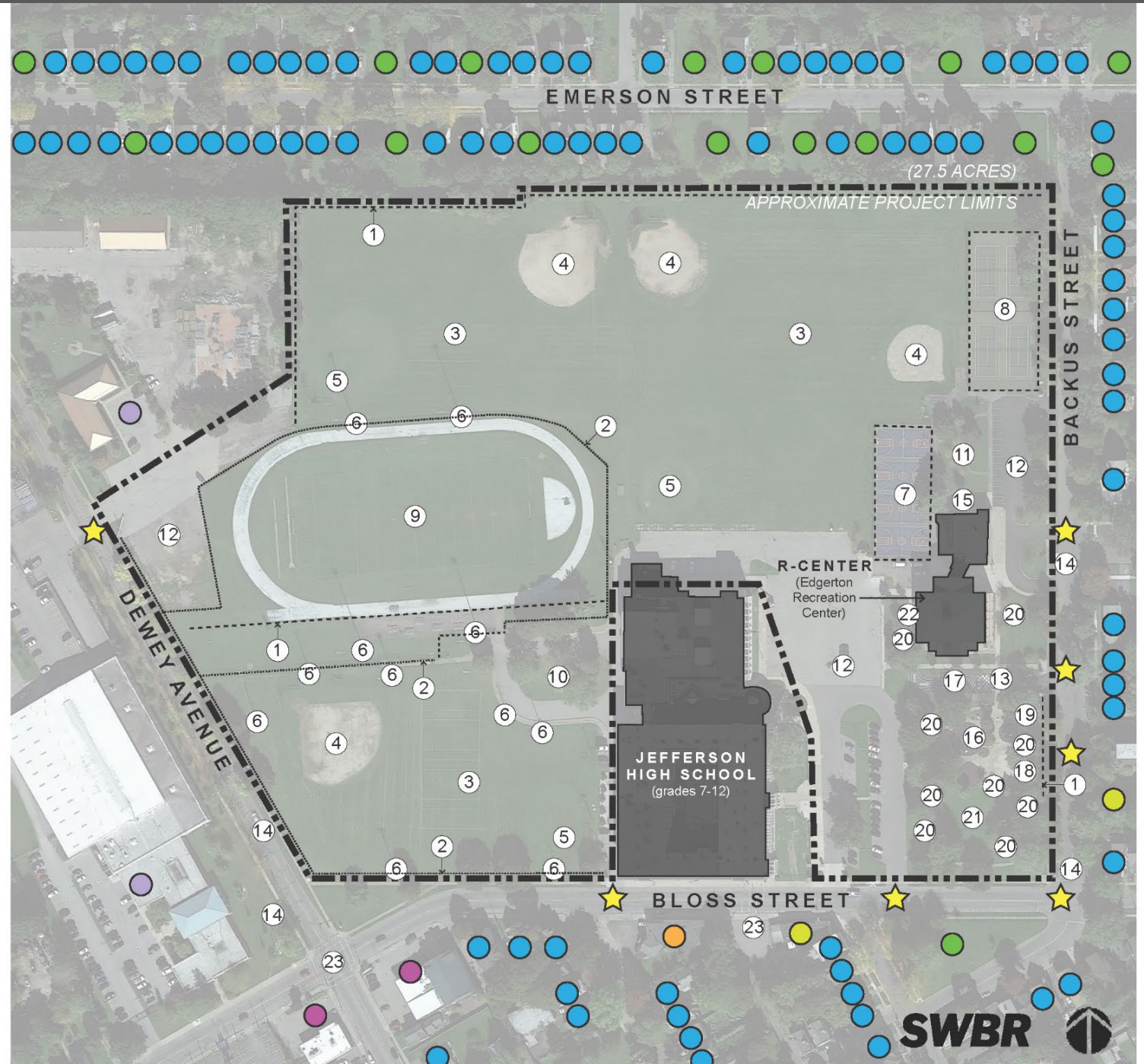
42 Backus Street

## SITE FEATURES

- ★ Park Entrance
- ① Perimeter Chain Link Fencing
- ② Iron Fencing
- ③ Baseball Outfield
- ④ Clay Infield with Backstop
- ⑤ Grass Infield with Backstop
- ⑥ Field Lighting
- ⑦ Basketball Courts with Fence
- ⑧ Tennis Courts with Fence
- ⑨ Track and Football Field
- ⑩ Drop-off Circle
- ⑪ Front Plaza
- ⑫ Parking Lot
- ⑬ Bike Rack
- ⑭ Bus Stop
- ⑮ Adult Fitness Equipment
- ⑯ Playground
- ⑰ Games Courtyard
- ⑱ Splash Pad
- ⑲ Underground Mechanical Vault
- ⑳ Seating / Picnic Tables
- ㉑ Tree Cover
- ㉒ Old Games Court/Garden
- ㉓ Crosswalk

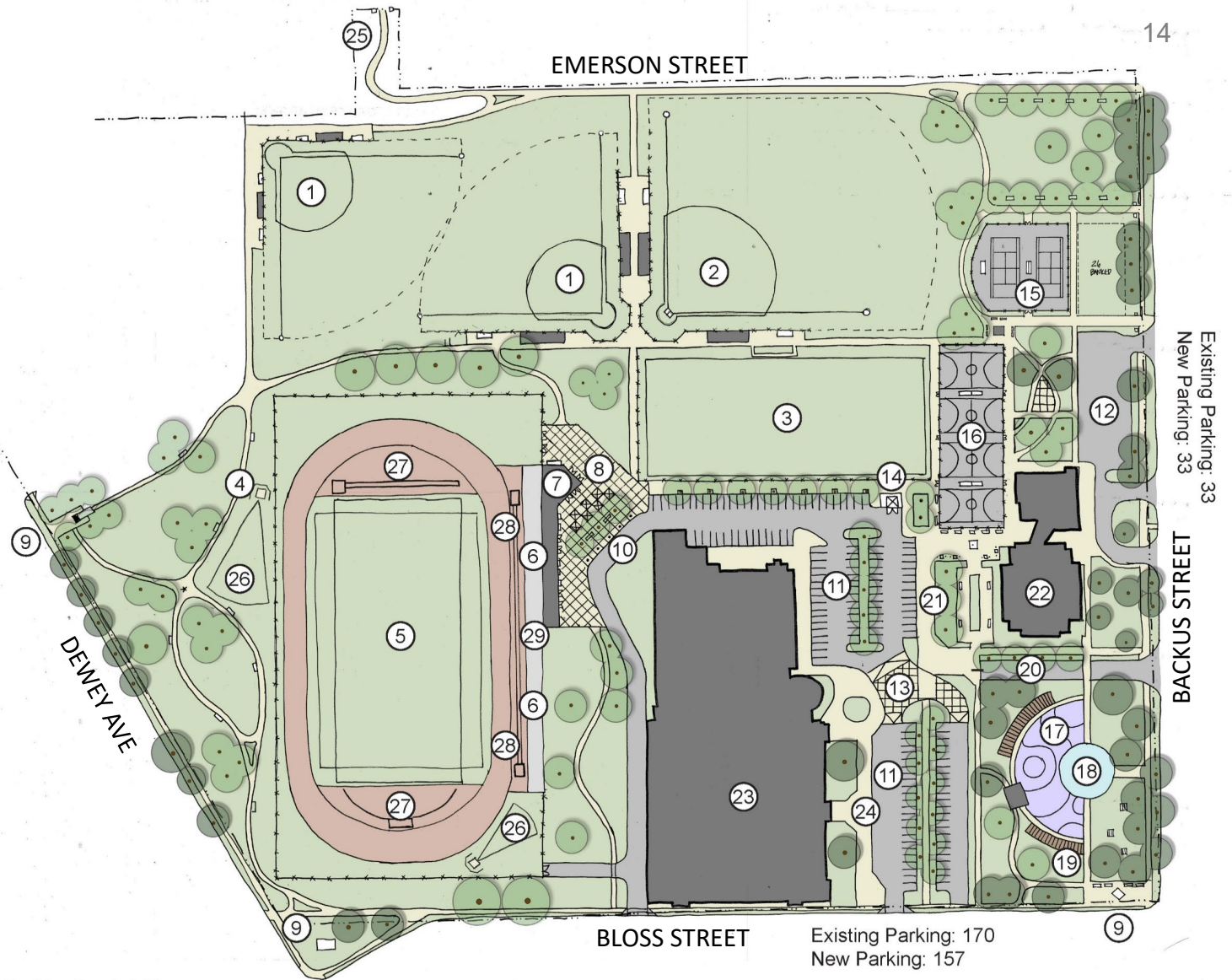
## NEIGHBORHOOD CONTEXT

- Residential Property
- Commercial Property
- Vacant Commercial
- Vacant Lot
- Municipal/Community Services
- Faith Center





- ① Softball Field with Dugouts, Bleachers, Infield Fencing and Foul Poles
- ② Baseball Field with Dugouts, Bleachers, Infield Fencing and Foul Poles
- ③ Multi-sport Field with Bleachers
- ④ Walking Paths with Rest Areas and Dog Waste Stations
- ⑤ New Athletic Track with Central Turf Multi-sport Field and Controlled Access
- ⑥ Stadium Seating
- ⑦ Concession, Ticketing and Locker Room Building
- ⑧ Entry Plaza for Athletics and Ticketing
- ⑨ Entry Plaza with Signage/Landmark
- ⑩ Dropoff Zone
- ⑪ Redesigned Parking
- ⑫ Existing Parking
- ⑬ Raised Table Crosswalk
- ⑭ New Dumpster Location
- ⑮ 2 Tennis/Pickleball Courts with Bleachers
- ⑯ 4 Basketball Courts with Bleachers
- ⑰ Expanded Playground
- ⑱ Splash Pad
- ⑲ Seating and Grills under Shade Structure
- ⑳ Existing Yard Games
- ㉑ Expanded Yard Games, Bocce and Game Tables
- ㉒ Edgerton R-Center
- ㉓ School Building
- ㉔ School Bus Dropoff
- ㉕ Pedestrian Connection to Adjacent Neighborhood
- ㉖ Shotput and Discus Facilities
- ㉗ Track Event Facilities, Pole Vault and High Jump
- ㉘ Track Event Facilities, Long Jump and Triple Jump
- ㉙ Press Box



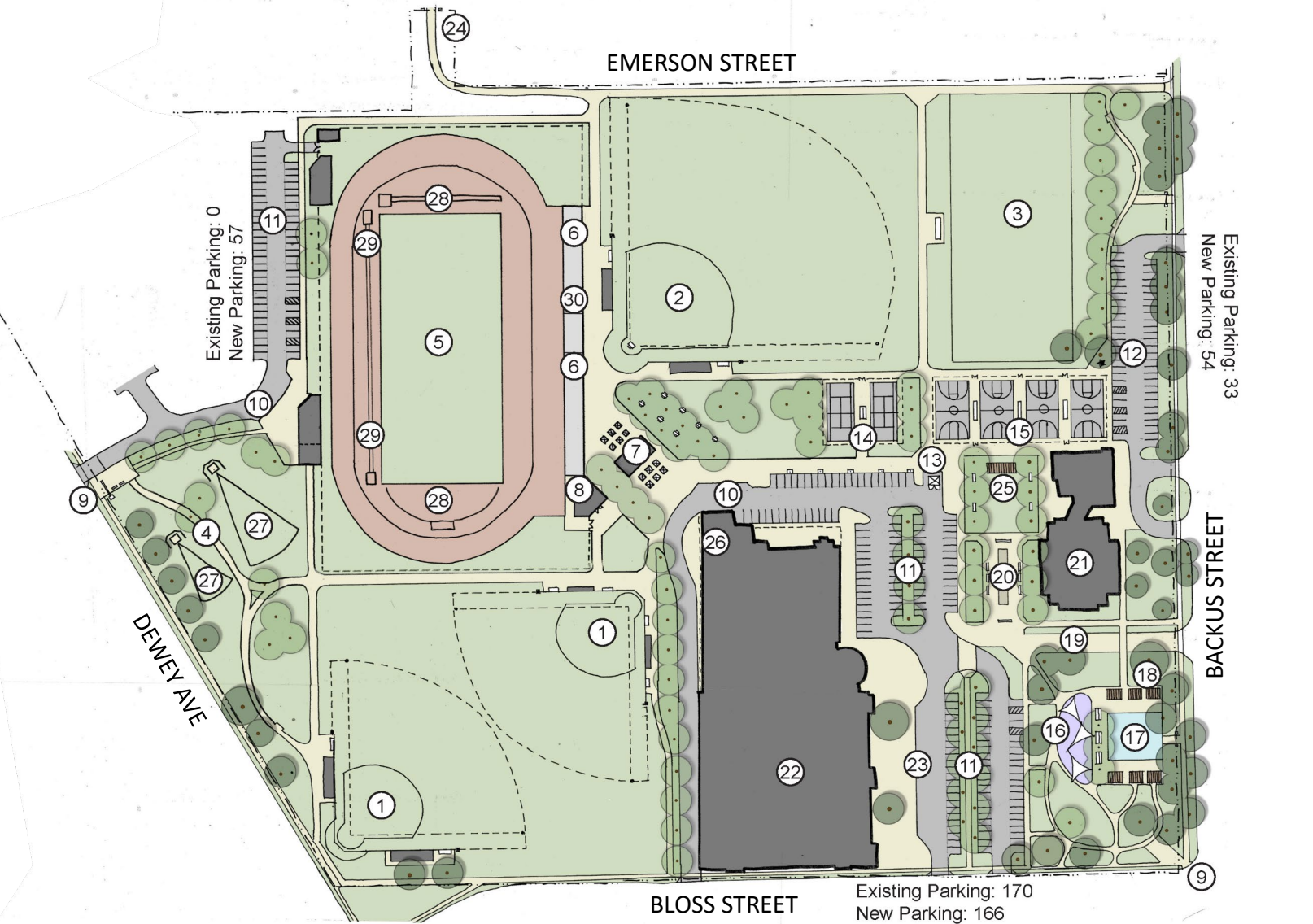
Existing Parking Total: 203  
 New Parking Total: 190  
 Banked spaces: 26



**Edgerton R-Center Concept 1**  
 City of Rochester Multi-Parks Masterplan



- ① Softball Field with Dugouts, Bleachers, Infield Fencing and Foul Poles
- ② Baseball Field with Dugouts, Bleachers, Infield Fencing and Foul Poles
- ③ Multi-sport Field with Bleachers
- ④ Walking Paths with Rest Areas and Dog Waste Stations
- ⑤ New Athletic Track with Central Turf Multi-sport Field and Controlled Access
- ⑥ Stadium Seating
- ⑦ Concession Building With Dinettes and Sunshade
- ⑧ Entry Plaza for Athletics and Ticketing
- ⑨ Entry Plaza with Signage/Landmark
- ⑩ Dropoff Zone
- ⑪ Redesigned Parking
- ⑫ Expanded Existing Parking
- ⑬ New Dumpster Location
- ⑭ 2 Tennis/Pickleball Courts with Bleachers
- ⑮ 4 Basketball Courts with Bleachers
- ⑯ New Playground
- ⑰ Splash Pad
- ⑱ Seating and Grills under Shade Structure
- ⑲ Existing Yard Games
- ⑳ Expanded Yard Games, Bocce and Game Tables
- ㉑ Edgerton R-Center
- ㉒ School Building
- ㉓ School Bus Dropoff
- ㉔ Pedestrian Connection to Adjacent Neighborhood
- ㉕ Teen Hangout Area
- ㉖ Decorative Screen Wall
- ㉗ Shotput and Discus Facilities
- ㉘ Track Event Facilities, Pole Vault and High Jump
- ㉙ Track Event Facilities, Long Jump and Triple Jump
- ㉚ Press Box



Existing Parking: 0  
New Parking: 57

Existing Parking: 33  
New Parking: 54

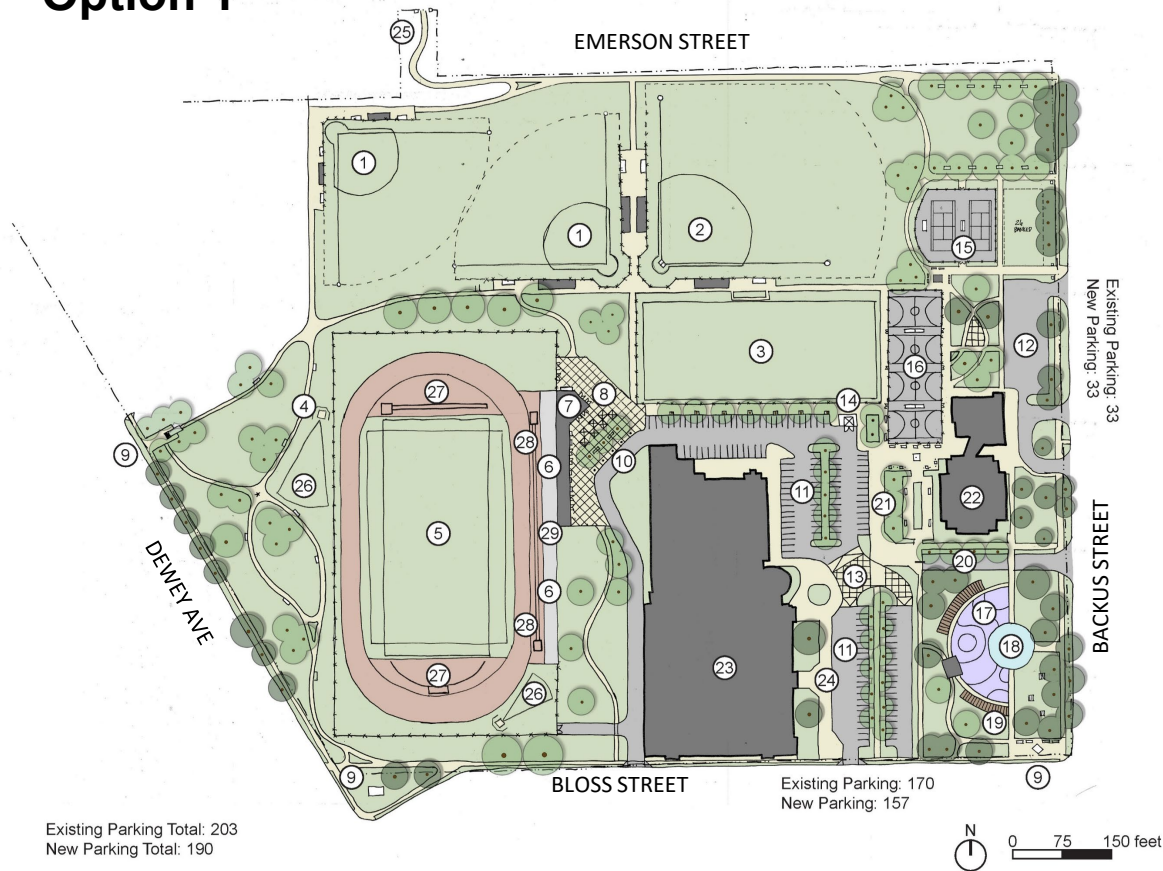
Existing Parking: 170  
New Parking: 166

Existing Parking Total: 203  
New Parking Total: 277





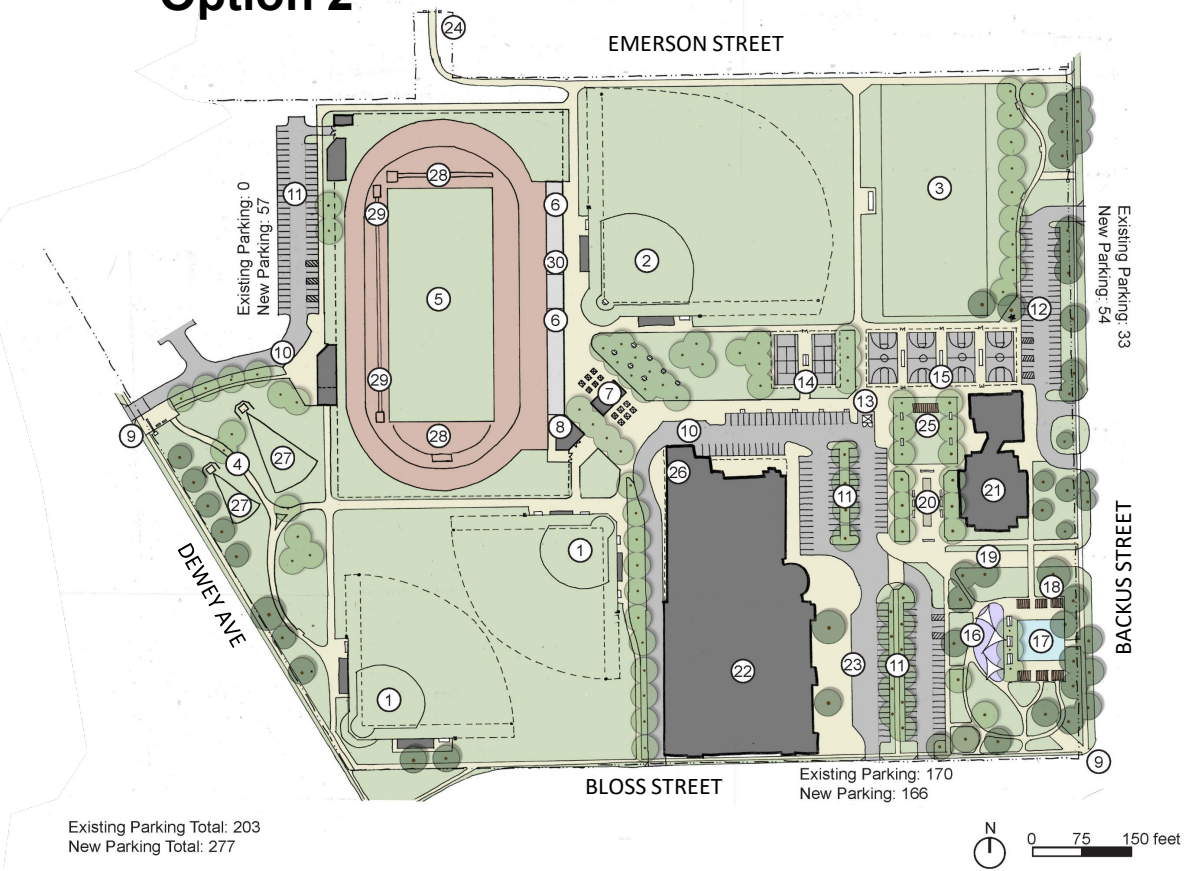
# Edgerton Park Option 1



### Unique features:

- Stadium in southwest corner
- Locker rooms for home/away and concession within stadium building footprint
- Basketball + tennis remain in same general location
- New parking total 190 (26 banked)

# Edgerton Park Option 2



### Unique features:

- Stadium in northwest corner
- Additional Parking in team drop-off area
- Expanded parking by basketball courts
- Locker rooms for home/away and concession are separate buildings
- Basketball + tennis are in new location
- Basketball changes orientation (N/S)
- New parking total 277



# We want to hear from you.

Please follow the link below to vote on your favorite park design!

<https://www.surveymonkey.com/r/ZK5QBPL>



## **ROCHESTER**

387 East Main Street  
Rochester, NY 14640  
(585) 232-8300

## **SYRACUSE**

309 South Franklin Street  
Syracuse, NY 13202  
(315) 488-5635

## **TROY**

283 River Street  
Troy, NY 12180  
(518) 618-0900

SWBR.COM

**SWBR**