

Maplewood Park Trail Improvements Maplewood Park Playground Improvements Preliminary Design Update

**Hybrid Public Meeting No. 1
(In-Person & Zoom Webinar)
City Training & Safety Building
107 Bridgeview Drive
Thursday, July 11, 2024 at 6:00 PM**



**City of Rochester, NY
Malik D. Evans, Mayor
Rochester City Council**

City of Rochester
Department of Environmental Services
Bureau of Architecture & Engineering
Landscape Architecture Division
AND
Department of Recreation & Human Services

Introduction

Format of this Meeting – In-Person and Virtual

- **Attendance:**
 - In-person attendees please sign in on the Attendance sheet at the room entrance
 - Virtual meeting participants please use the “chat” feature to provide your name and email
- **Questions:** Virtual meeting participant will be muted during the presentation. At the end of the presentation:
 - In-person attendees will be able to visit stations in the room to view project display boards, ask questions, and continue the discussion with the project team members.
 - Links to the project web pages have been copied and pasted into the meeting chat. Virtual meeting participants can follow the links to view the presentation and display boards virtually and submit any feedback and questions directly to the Project Manager(s).
- **Audio/Video Recording:** This presentation will be recorded. All attendees consent to the audio and video recording of this meeting for project documentation purposes.

Tonight's Presentation



City of Rochester, NY
Malik D. Evans, Mayor
Rochester City Council

- **Overall Project Orientation**
- **Maplewood Nature Center**
- **Maplewood Trail Improvements**
- **Maplewood Park Playground Improvements**
- **Project Timelines**
- **More Information & Continued Discussion**

Overall Project Orientation



City of Rochester, NY
Malik D. Evans, Mayor
Rochester City Council



Maplewood Nature Center



City of Rochester, NY
Malik D. Evans, Mayor
Rochester City Council

Existing
Conditions



Maplewood Nature Center



City of Rochester, NY
Malik D. Evans, Mayor
Rochester City Council

Proposed Site Improvements



Maplewood Nature Center



City of Rochester, NY
Malik D. Evans, Mayor
Rochester City Council

Nature
Center
Interior
Rendering



Maplewood Nature Center



City of Rochester, NY
Malik D. Evans, Mayor
Rochester City Council

Exterior
Rendering
From
Bridge View
Drive



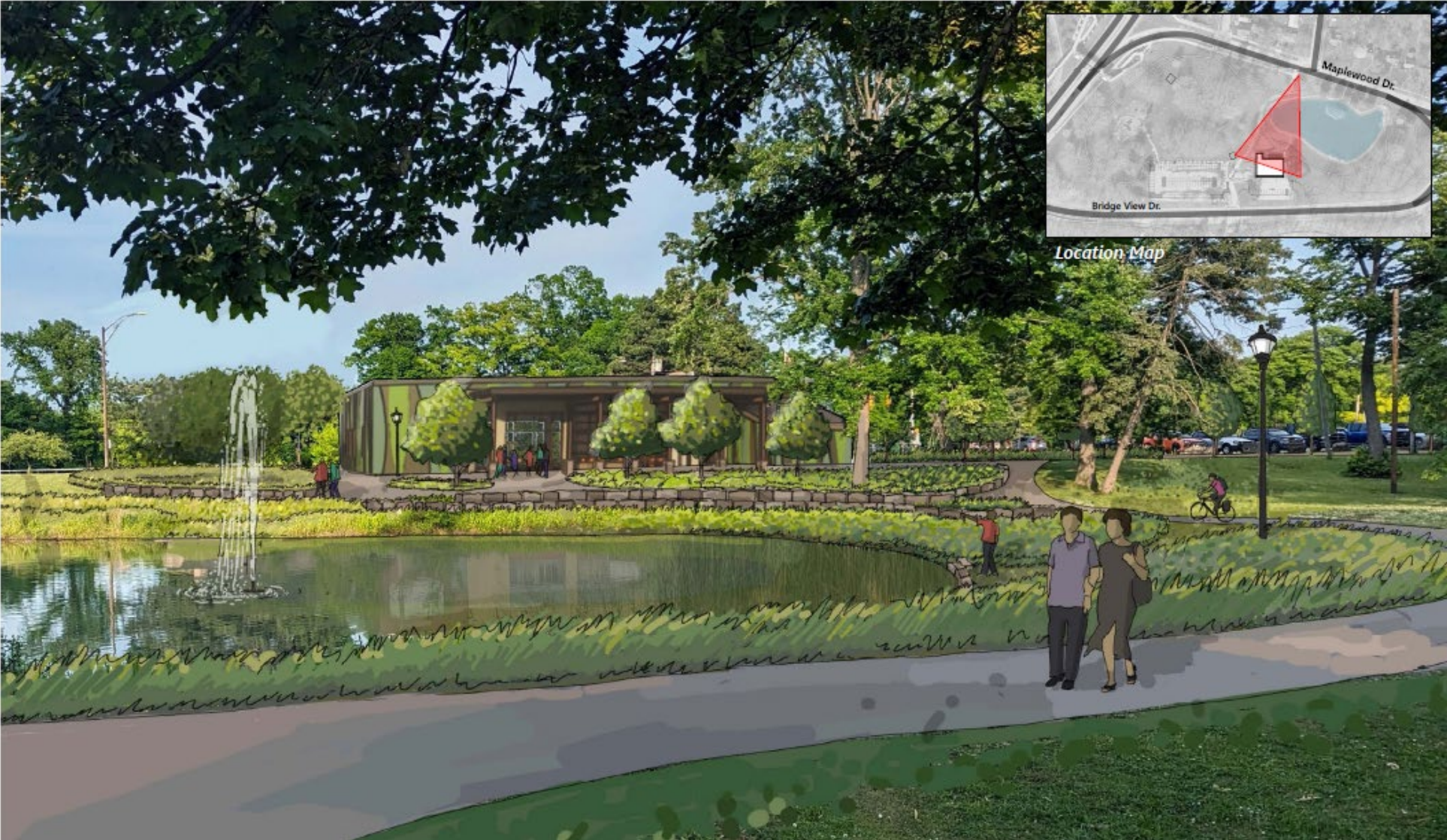
Location Map

Maplewood Nature Center



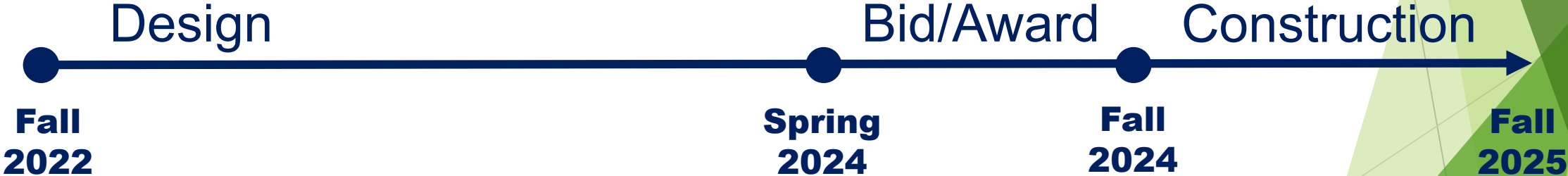
City of Rochester, NY
Malik D. Evans, Mayor
Rochester City Council

Exterior
Rendering
From
Maplewood
Drive



Maplewood Nature Center

Schedule:



Maplewood Nature Center



Contact Information:

Laura A. Civiletti PE, RLA
City of Rochester / Department of Environmental Services
Bureau of Architecture & Engineering

Laura.Civiletti@cityofrochester.gov

City of Rochester – Maplewood Nature Center
Project Website Page:
www.cityofrochester.gov/maplewoodnaturecenter/

MAPLEWOOD PARK TRAIL IMPROVEMENTS PROJECT

City of Rochester, New York



PROJECT INFORMATION

Preliminary design, final design, and construction of trail improvements and enhancements to the Maplewood Park segment of the Genesee Riverway Trail.

PUBLIC MEETING

WHEN: Thursday, July 11, 2024 from 6:00 p.m. to 7:30 p.m.

WHERE: City's Office of Training and Safety, located at 107 Bridge View Drive, Rochester, NY 14615



City of Rochester, NY
Malik D. Evans, Mayor
Rochester City Council

**Barton
& Loguidice**





Let's Discuss
this Project!

01 Project Limits

02 Existing Conditions

03 Needs & Opportunities

04 Preliminary Design - Proposed Improvements

05 Anticipated Project Timeline

01 Project Limits



LEGEND

- Genesee Riverway Trail - Project Limits
- Genesee Riverway Trail

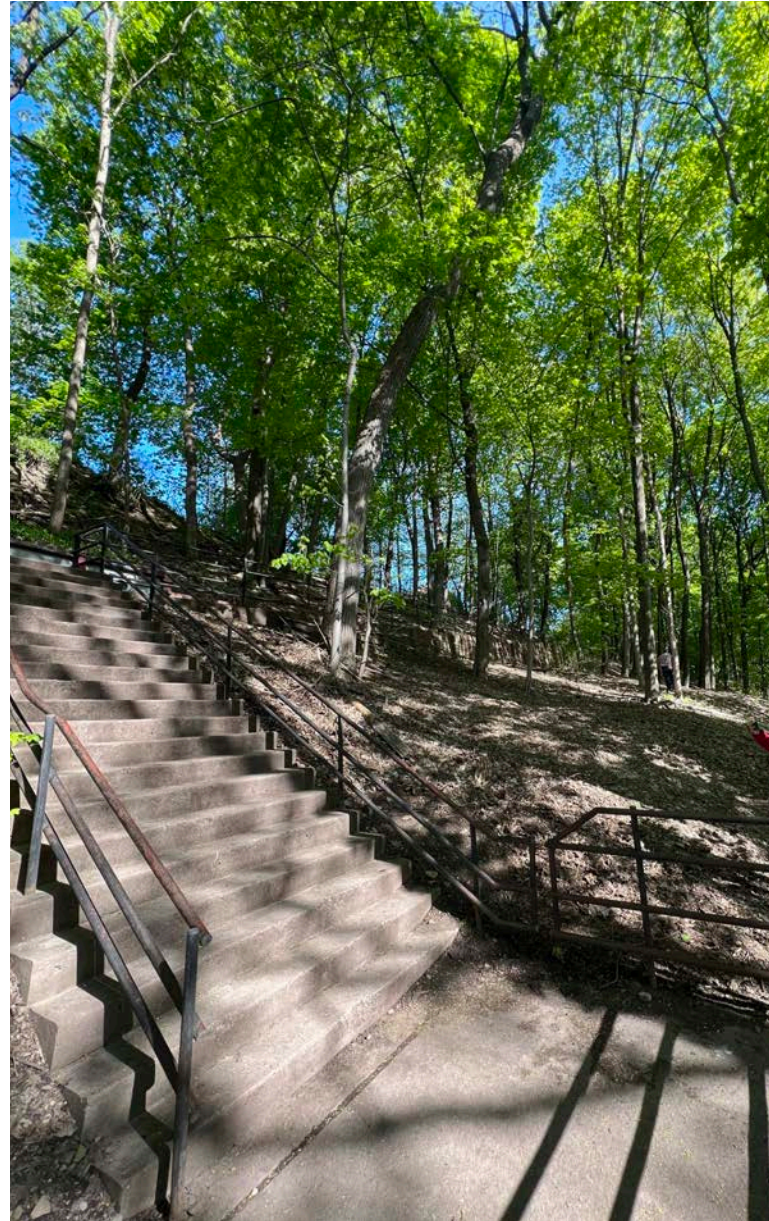
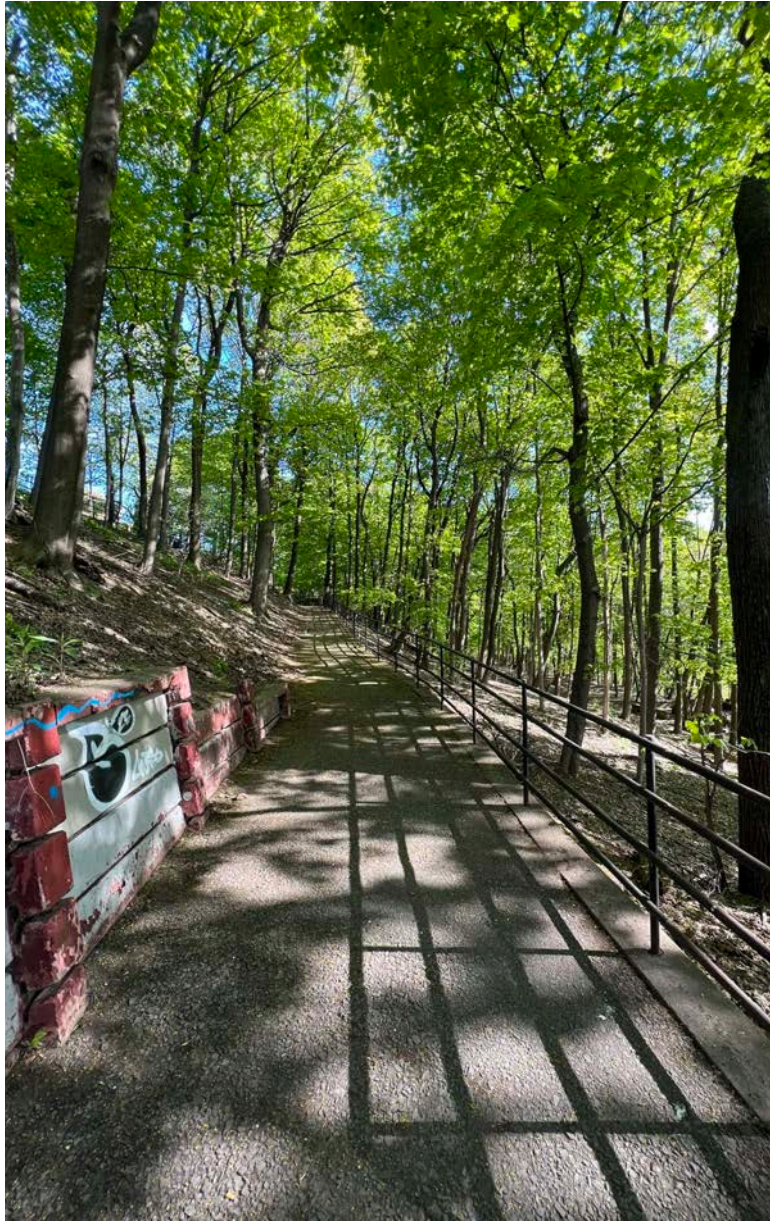


Inaccessible pathway

The trail provides access to a Lower Falls Park, however is inaccessible with a long staircase. There is an opportunity to reconfigure the pathway to provide access throughout the trail to those at any age, and any abilities.



02 Existing Conditions - Switchback Trail



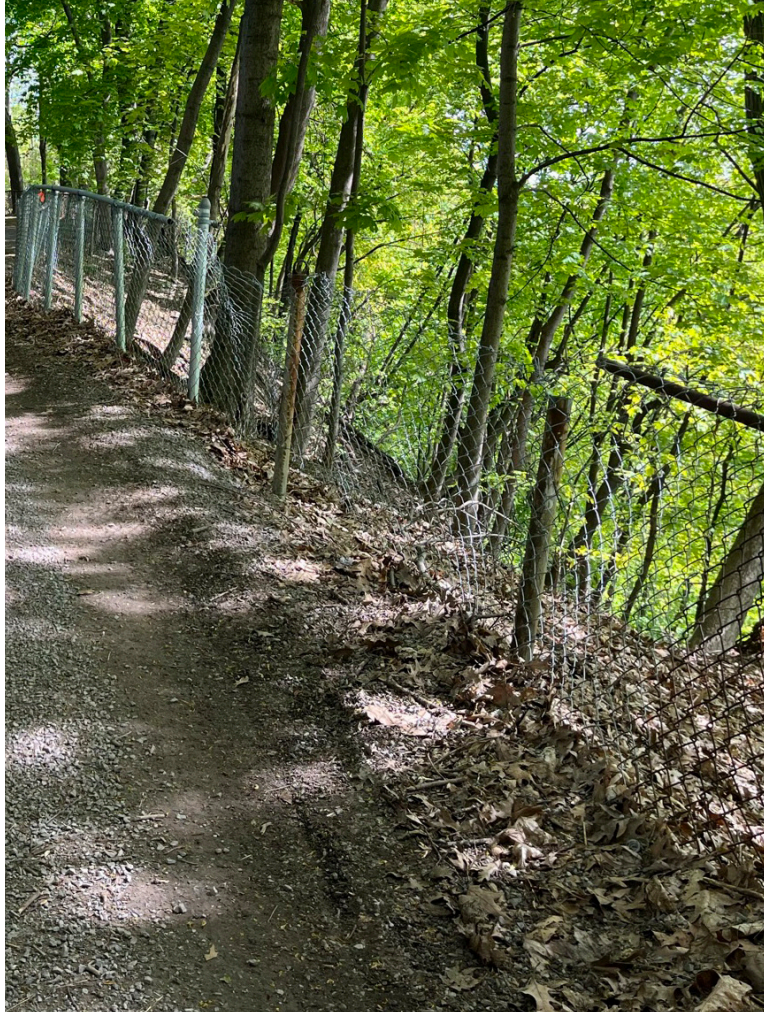
Uneven/Undefined Trail Surface

The existing trail is stone dust and shows signs of erosion, is uneven, and undefined in many sections. Not compliant with national accessibility or trail design standards.



Unstable Chain Link Fence

The existing chain link fence has deteriorated in some sections to where it is no longer effective or safe. Some sections are compromised due to erosion of the gorge edge.

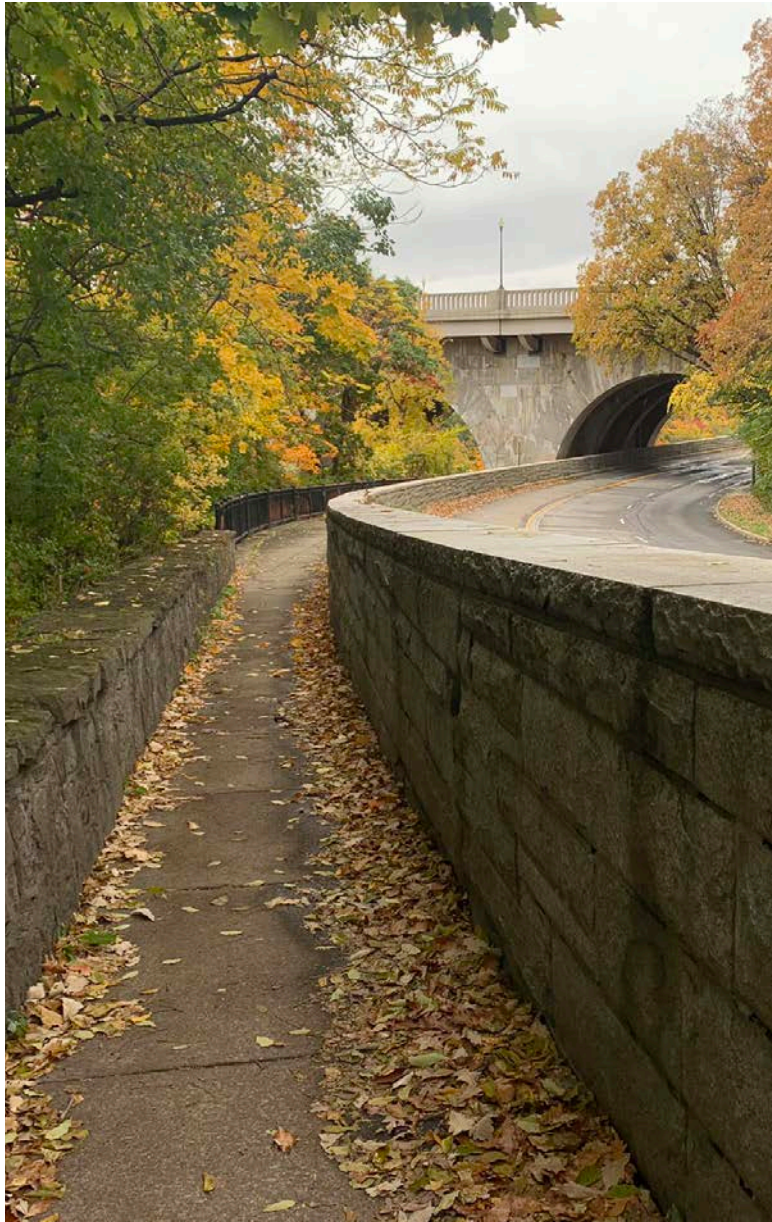


Deteriorated Wayfinding Signage

The wayfinding signage along the Genesee Riverway Trail within this section is worn, and difficult to read.



02 Existing Conditions - Veterans Bridge Diverter



Accessible pathway

There is an opportunity to remove the existing stairs and provide a new designed accessible pathway to bring trail users to Lower Falls Park. Options include a switchback trail or a path extension.



03 Needs & Opportunities - Paved Section Trail

Resurface Trail

There is an opportunity to implement a revitalized section of trail which is 8'-10' wide and an asphalt material.



Relocating or Replacing Fence

It is recommended to relocate or replace the fence along sections of the trail.



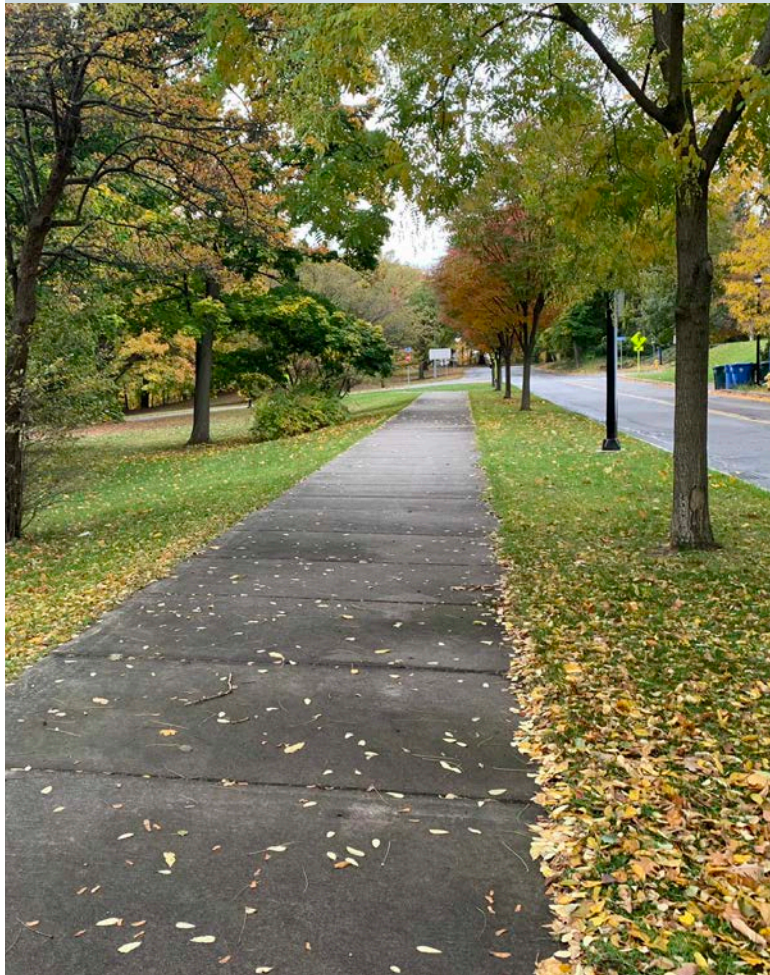
Enhanced Wayfinding Signage

There is an opportunity to upgrade the existing wayfinding signage along this section of trail to match the existing Genesee Riverway Trail signage theme.



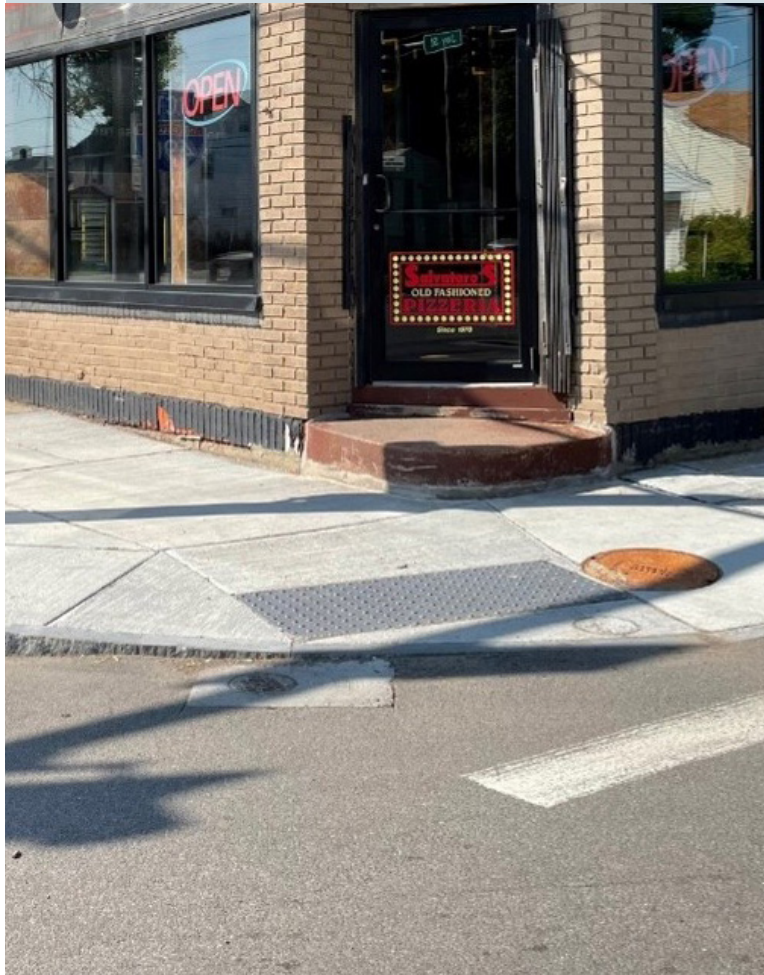
Existing Sidewalks

Existing sidewalks are in good condition and will be retained as is throughout this segment.



Replace Sidewalk Curb Ramps

It is recommended to modify, or replaced sidewalk curb ramps and install detectable warning units where needed to address accessibility requirements.



Upgrade Crosswalks

There is an opportunity to Install high visibility crosswalks and replace pavement markings throughout the project limits to meet current Manual on Uniform Traffic Control Devices (MUTCD) standards, as needed.

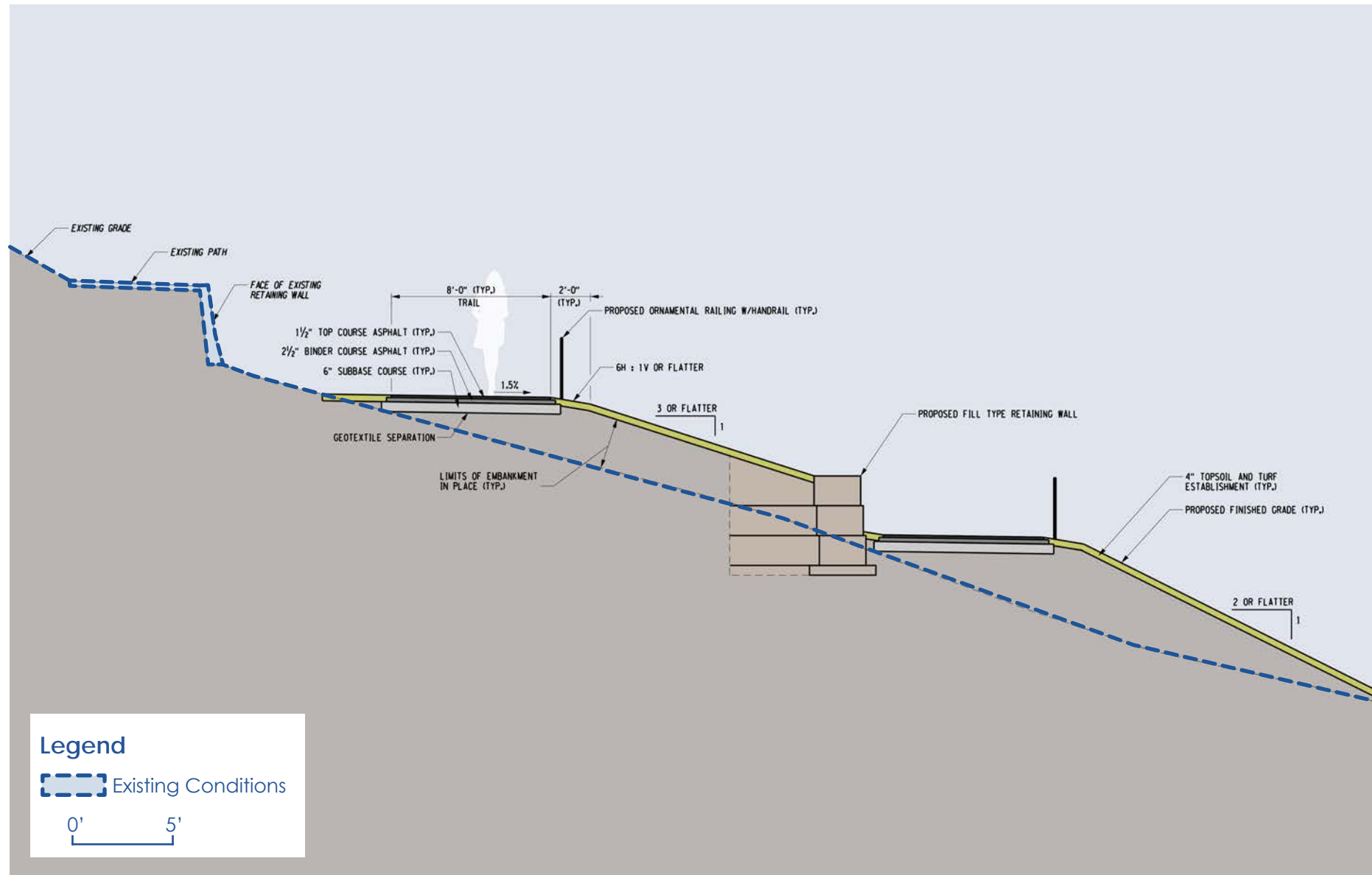


04 Preliminary Design - Proposed Improvements: Switchback Trail

Switchback Trail: Alternative #1 - Switchback

Proposed improvements include:

- Universally accessible trail
- Removal of existing stairs
- New 8' ADA compliant path
- New ornamental railing with handrail
- Two (2) new retaining walls
- Total of thirty-four (34) tree removals
 - » 21 - 6"-12" caliper trees
 - » 4 - 12"-18" caliper trees
 - » 8 - 18"-24" caliper trees
 - » 1 - 24"-36" caliper trees

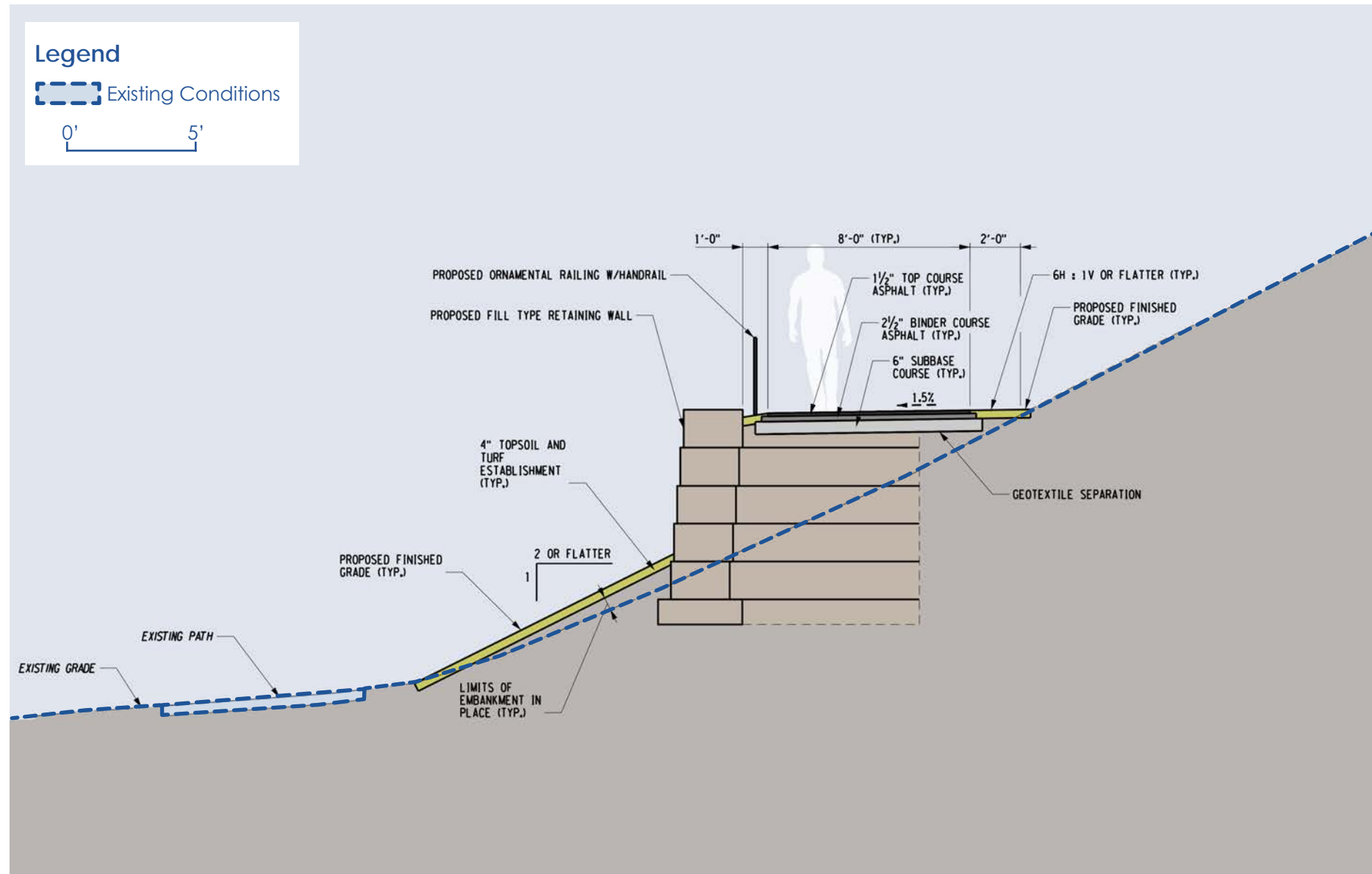


04 Preliminary Design - Proposed Improvements: Switchback Trail

Switchback Trail: Alternative #2 - Path Extension

Proposed improvements include:

- Universally accessible trail
- Removal of existing stairs
- New 8' ADA compliant path
- New ornamental railing with handrail
- One (1) new long retaining wall
- Four (4) tree removals
 - » 1 - 6"-12" caliper trees
 - » 3 - 18"-24" caliper trees

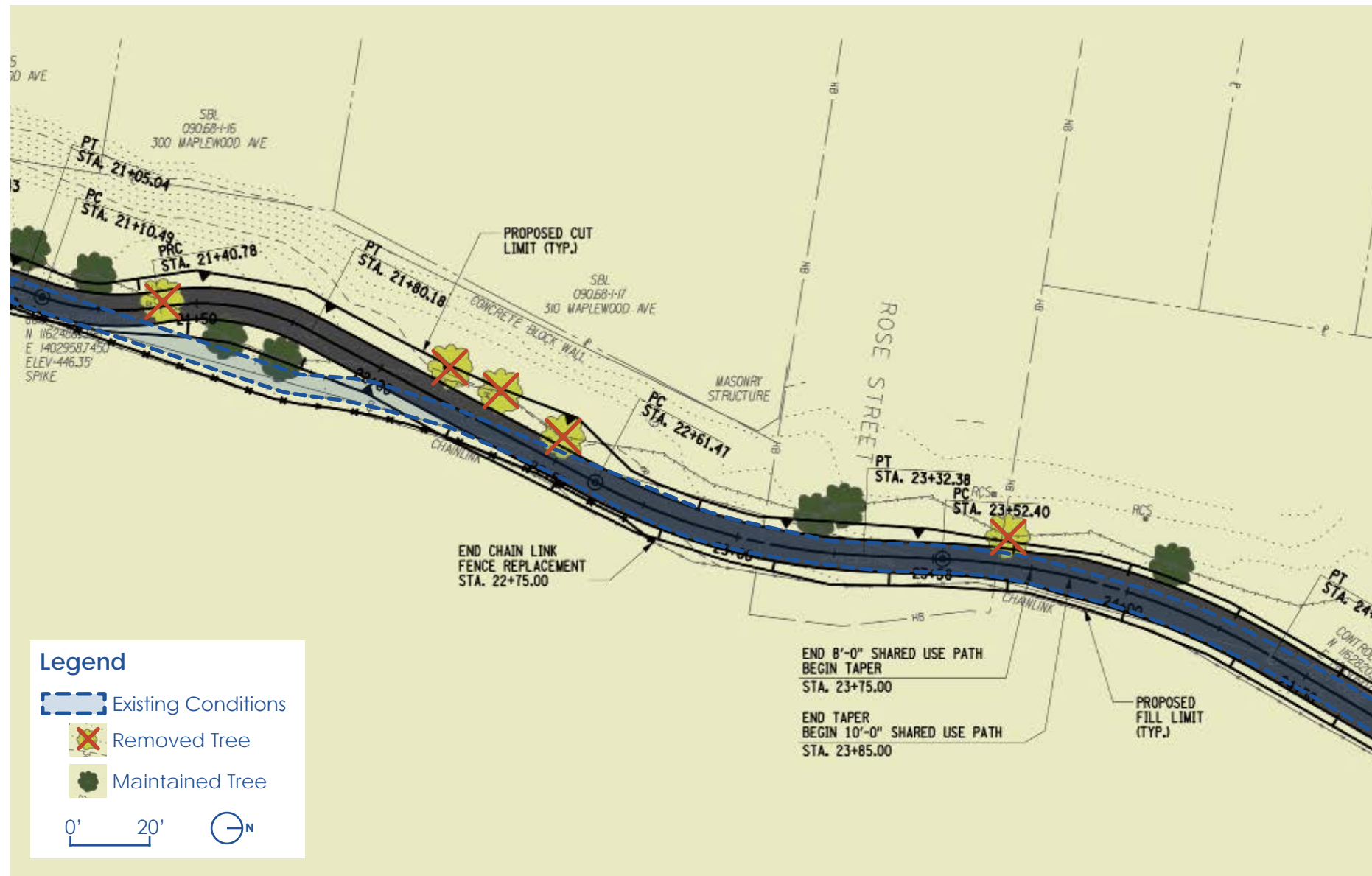


04 Preliminary Design - Proposed Improvements: Paved Trail

Paved Trail

Proposed improvements include:

- Universally accessible trail
- Realignment of trail
- Resurfaced trail with asphalt.
- Varying trail widths from 8' to 10' wide
- Smoothing of trail slopes
- Six (6) total tree removals
 - » 1 - 6"-12" caliper tree
 - » 3 - 12"-18" caliper trees
 - » 2 - 18"-24" caliper trees
- Replace the existing chain link fence where it is no longer functioning, or relocate the existing chain link fence in necessary sections
- Stabilized gorge edge

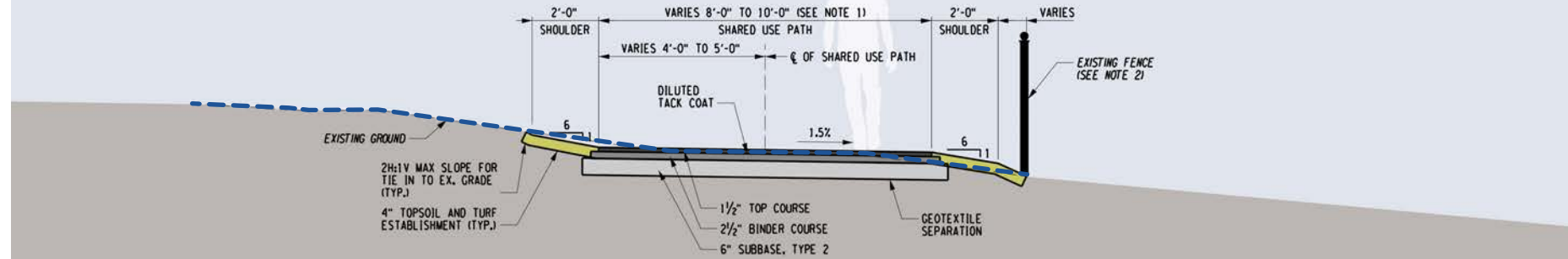


Paved Trail

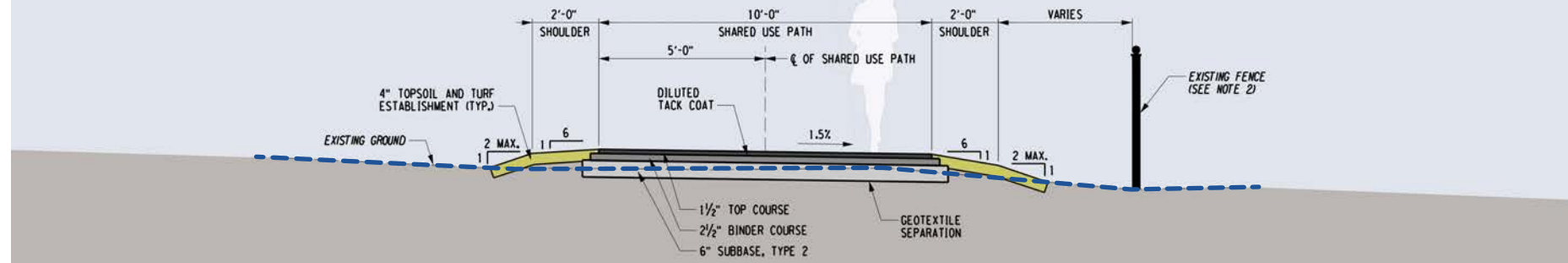
Proposed improvements include:

- Universally accessible trail
- Realignment of trail
- Resurfaced trail with asphalt.
- Varying trail widths from 8' to 10' wide
- Smoothing of trail slopes
- Six (6) total tree removals
 - » 1 - 6"-12" caliper tree
 - » 3 - 12"-18" caliper trees
 - » 2 - 18"-24" caliper trees
- Replace the existing chain link fence where it is no longer functioning, or relocate the existing chain link fence in necessary sections
- Stabilized gorge edge

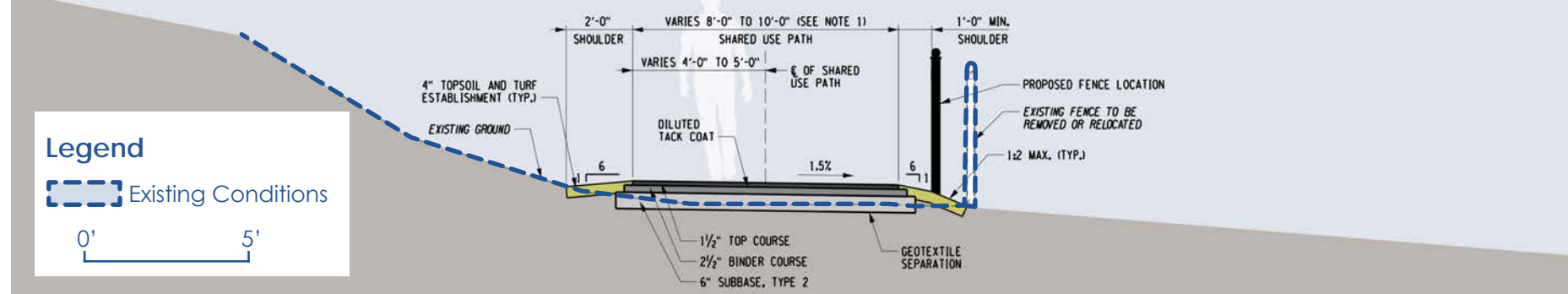
Typical Section - 1



Typical Section - 2



Typical Section - Proposed Fence Relocation



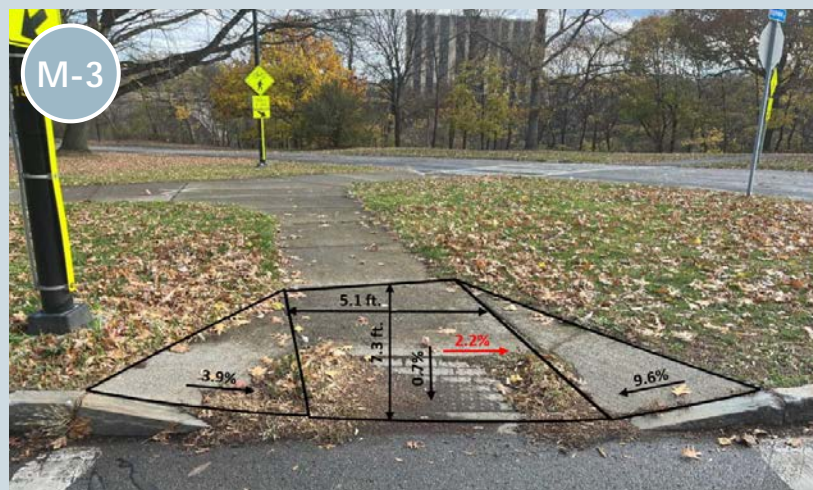
Legend

 Existing Conditions



04 Preliminary Design - Proposed Improvements: Veterans Bridge Diverter

A total of eight (8) pedestrian sidewalk curb ramps were field inspected and inventoried for the project corridor which tabulated seven (7) curb ramps (M-1 through M-5, M-7, M-8) need to be replaced due to critical elements not in compliance with the 1991 ADAAG Standards and one (1) curb ramp (M-6) does not need to be replaced as part of the project but requires an embedded detectable warning unit (DWU) to be installed.



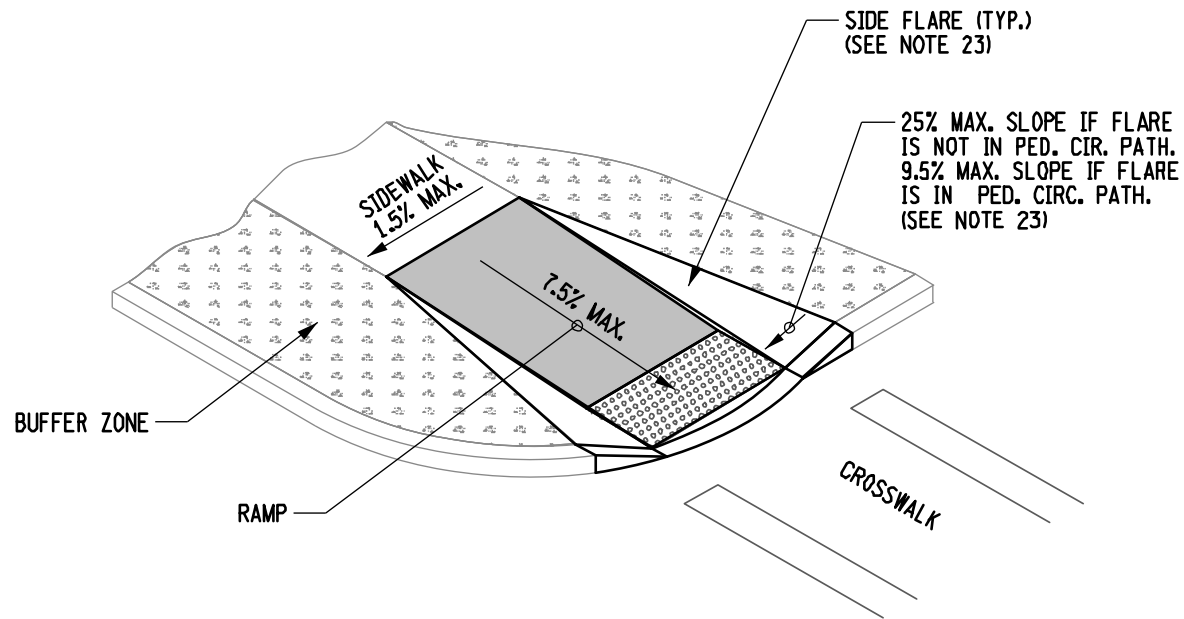
04 Preliminary Design - Proposed Improvements: Veterans Bridge Diverter

A total of eight (8) pedestrian sidewalk curb ramps were field inspected and inventoried for the project corridor which tabulated seven (7) curb ramps (M-1 through M-5, M-7, M-8) need to be replaced due to critical elements not in compliance with the 1991 ADAAG Standards and one (1) curb ramp (M-6) does not need to be replaced as part of the project but requires an embedded detectable warning unit (DWU) to be installed.

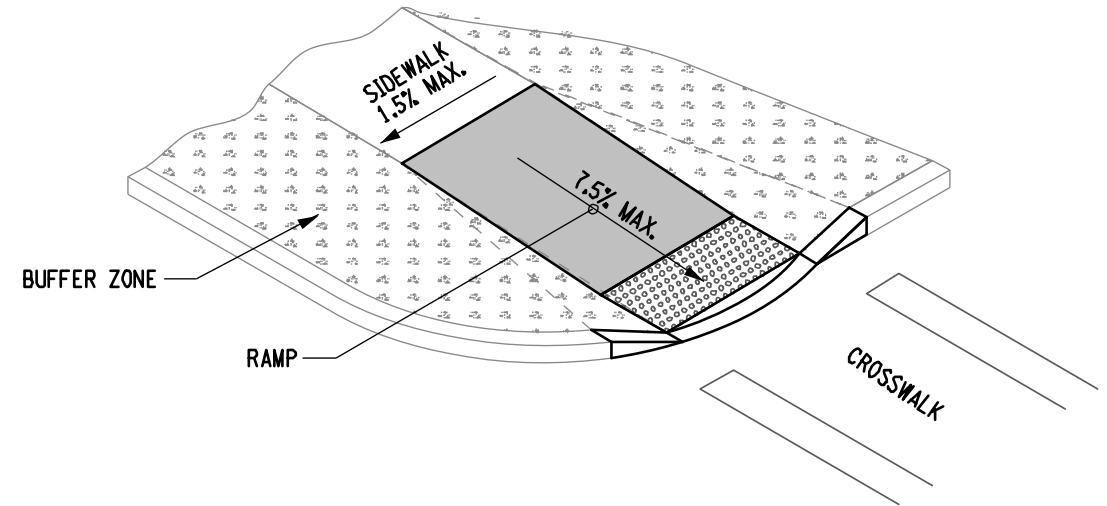


04 Preliminary Design - Proposed Improvements: Veterans Bridge Diverter

Standard sidewalk curb ramp details by NYS Department of Transportation. *As shown in the ADA Sidewalk Curb Ramp Assessment.



RAMP SIDE OPTION A: FLARED CONCRETE



RAMP SIDE OPTION B: GRADED EARTH

Standard sidewalk curb ramp and crosswalk details by the City of Rochester.

STANDARD TYPE S
TYPE S TO BE USED AT STOP CONTROLLED INTERSECTIONS ONLY

LADDER BAR STAGGERED TYPE L
STAGGERED TYPE L TO BE USED AT SIGNAL CONTROLLED INTERSECTIONS THAT DO NOT HAVE HIGH PEDESTRIAN MOVEMENT

COMBINED STAGGERED TYPE LS
STAGGERED TYPE LS TO BE USED AT MID-BLOCK CROSSWALKS AND SIGNAL CONTROLLED INTERSECTIONS THAT HAVE HIGH PEDESTRIAN MOVEMENT

EDGE OF PAVEMENT (TYP.)

CITY OF ROCHESTER	
TYPICAL CROSSWALK MARKINGS	
ISSUED 2-1-18	NON-STANDARD
REVISED 8-16-19	DWG.NO.S686-1

NOTES:

- REFER TO MCDOT STANDARD CROSSWALK MARKING DETAILS FOR DIMENSIONS.
- THERMOPLASTIC APPLICATION (ITEM NO. 686.01000011) IS TO BE INSTALLED UNLESS DIRECTED BY CITY ENGINEER.

ACCESS RAMP TYPE H

4" MINIMUM

LOW POINT OF GUTTER

WARP BACK EDGE OF GUTTER PER SLOPE REQUIREMENTS - SEE DETAIL

DETAIL

SECTION

NOTES:

- MINIMUM WIDTH OF ACCESS RAMP IS 4 FEET.
- RUNNING SLOPE OF SIDE FLARES TO BE 9.50% MAXIMUM.
- SURFACE OF ACCESS RAMP TO BE FIRM, STABLE AND SLIP-RESISTANT. TEXTURE SURFACE WITH COARSE BROOM RUNNING TRANSVERSE TO SLOPE OF ACCESS RAMP.
- ENTIRE AREA OF ACCESS RAMP AND LANDING PAD IS TO BE 7 INCH THICK CONCRETE.

CITY OF ROCHESTER	
SIDEWALK ACCESS RAMP TYPE H	
ISSUED 3-21-94	NON-STANDARD
REVISED 5-15-20	DWG.NO.S608-16

ACCESS RAMP TYPE G

TRANSITION CURB

VIEW

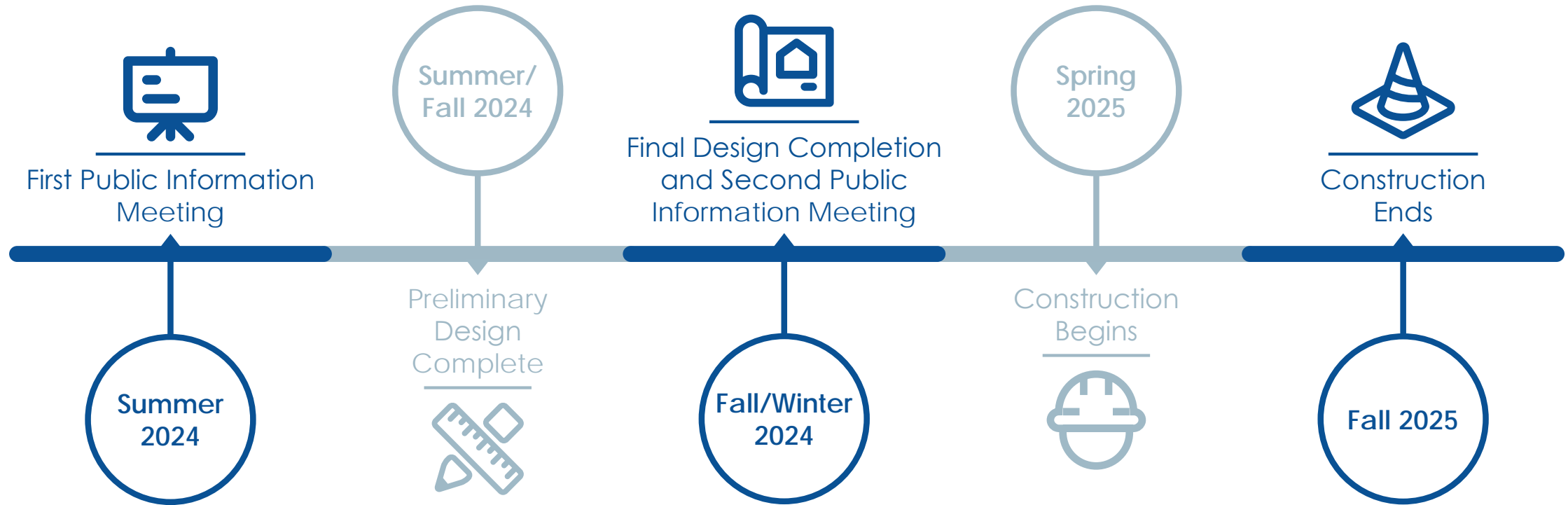
SECTION

NOTES:

- MINIMUM WIDTH OF ACCESS RAMPS AND TURNING SPACE IS 4 FEET.
- SURFACE OF ACCESS RAMP TO BE FIRM, STABLE AND SLIP-RESISTANT. TEXTURE SURFACE WITH COARSE BROOM RUNNING TRANSVERSE TO SLOPE OF ACCESS RAMP.
- ENTIRE AREA OF ACCESS RAMPS, TURNING SPACE AND SIDE FLARE TO BE 7 INCH THICK CONCRETE.

CITY OF ROCHESTER	
SIDEWALK ACCESS RAMP TYPE G	
ISSUED 3-21-94	NON-STANDARD
REVISED 5-15-20	DWG.NO.S608-15

05 Anticipated Project Timeline



THANK YOU!

For additional information, please contact:

Tyler Burke, PE, CPESC

City of Rochester Department of
Environmental Services

585-428-7571

Tyler.Burke@CityofRochester.gov

Project Website:

<https://www.cityofrochester.gov/maplewoodtrail/>



Maplewood Nature Center Plan



Maplewood Park Playground Improvements

Existing Conditions with Aerial and Survey

350 Maplewood Drive, Rochester, NY
July 11, 2024



Stone Dust Trail
Maplewood Nature Center
Park Improvements Project

Bench, typ

Moka Yama

Jr. Critter - Snail

Wobble Board, Typ

Jr. Form - Round Small

Timber Tower 1

Resilient Surfacing, typ

Alternate - Berm

Alternate - Swings Play Area

Jr. Form - Round Large

CIP Flush Concrete Mow Strip

Log Tangle

Bog Stilt, Typ

Log Stepper, Typ

Bike Rack and Trash Receptacle

Alternate - Deciduous Tree, Typ

ADA Compliant Concrete Walk

Existing Tree, Typ.

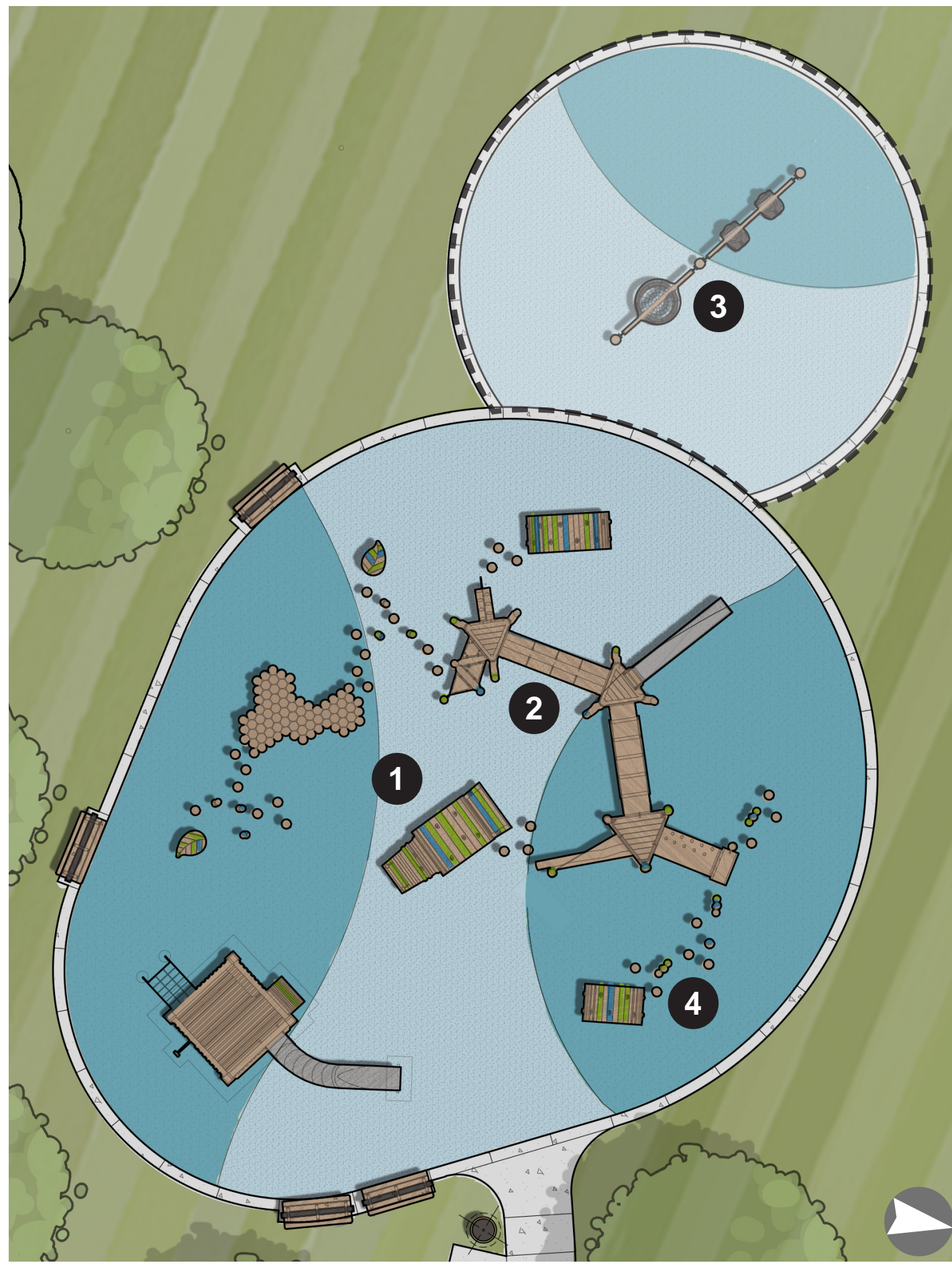
Maplewood Nature Center
Park Improvements Project



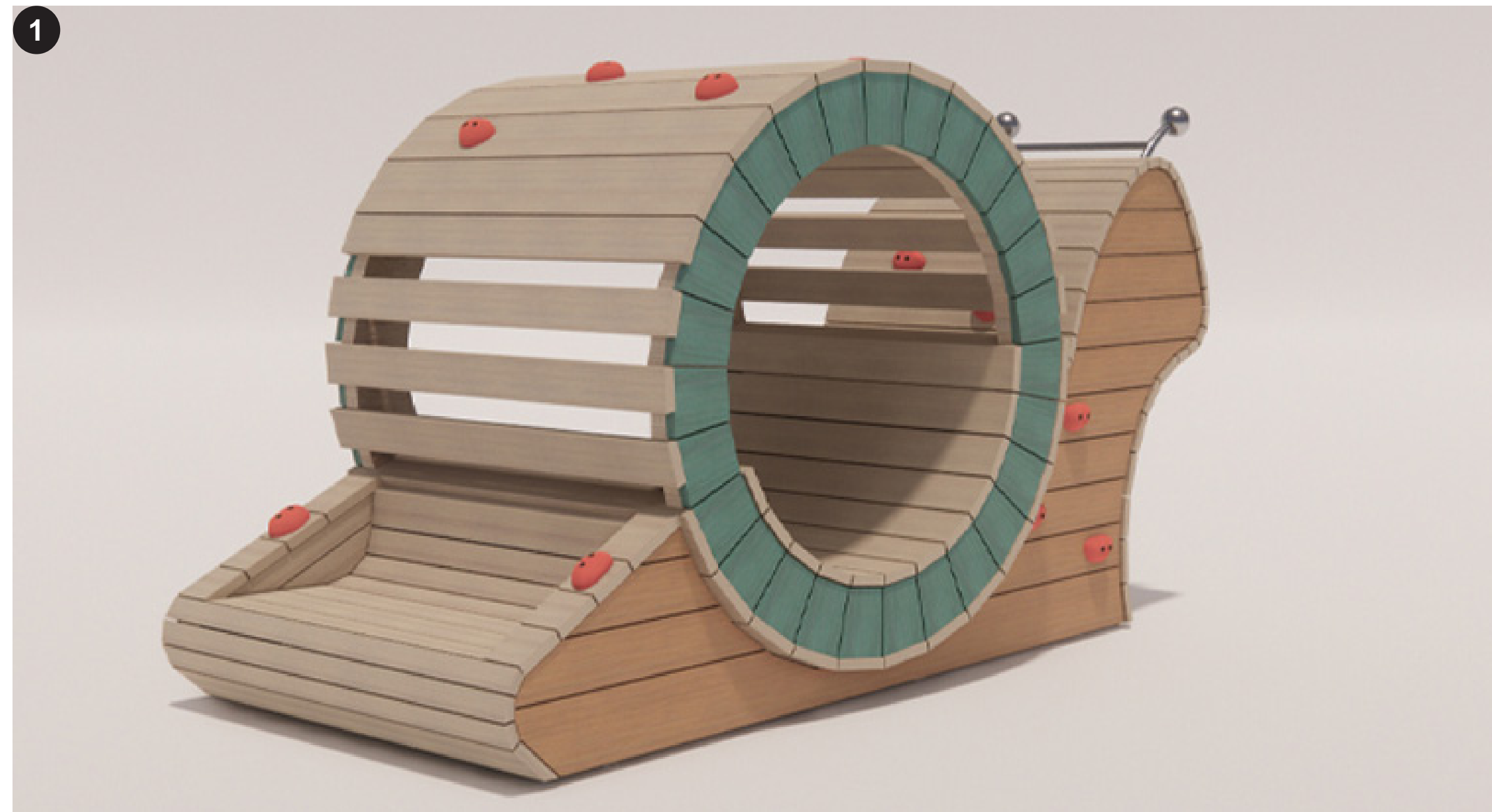
Maplewood Park Playground Improvements

Playground Schematic Plan

350 Maplewood Drive, Rochester, NY
July 11, 2024



Play Reference Plan



1 Jr. Critter - Snail

Age Range: 2-5y



2 Log Tangle

Age Range: 5-12y



3 Alternate #2 Double Bay Swing & Basket

Age Range: 2-12y



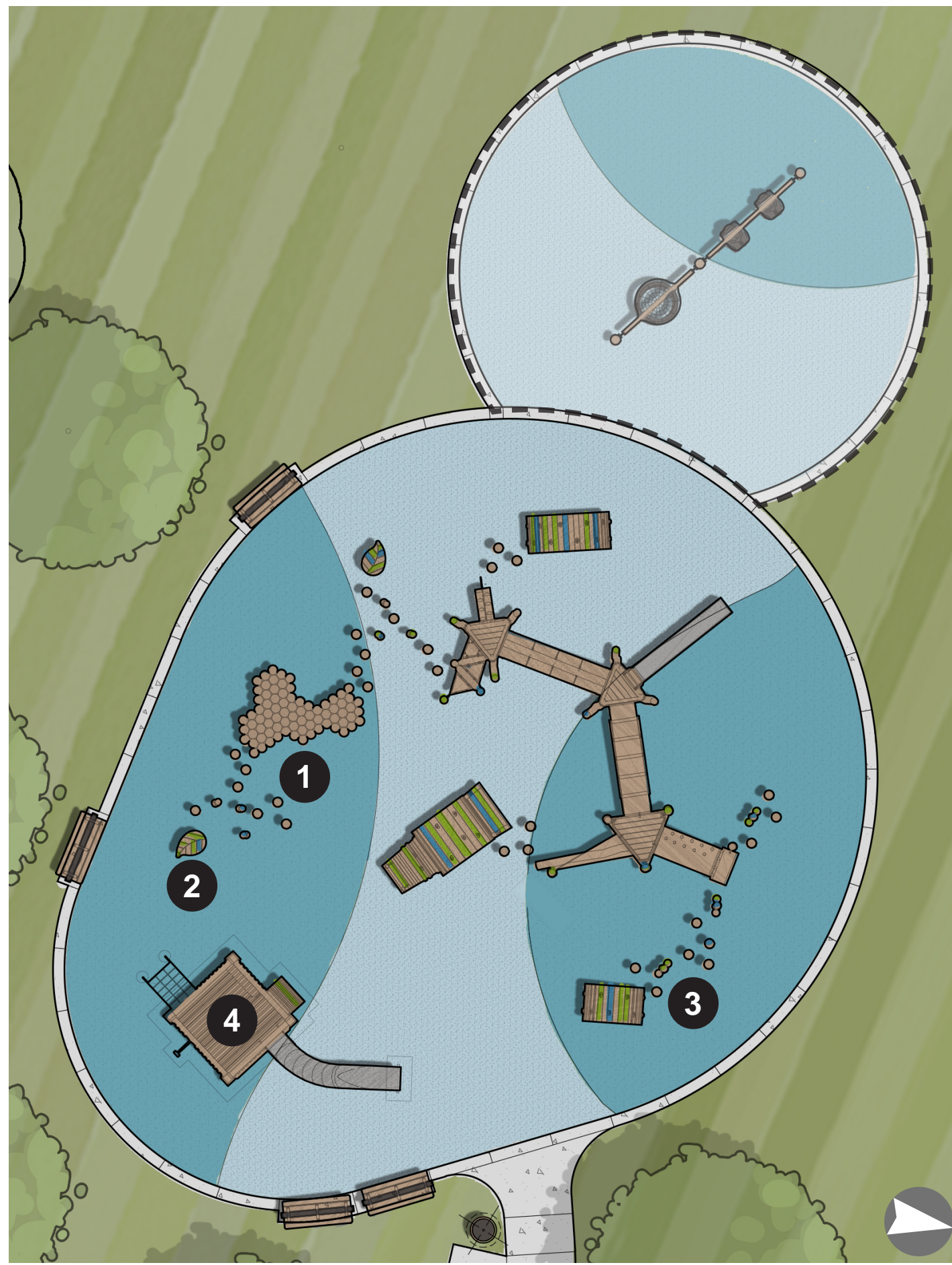
4 Bog Stilt & Log Steppers

Age Range: 5-12y

Maplewood Park Playground Improvements

Play Equipment 01

350 Maplewood Drive, Rochester, NY
July 11, 2024



Play Reference Plan



Moku Yama

Age Range: 5-12y



Wobble Board - Leaf

Age Range: 5-12y



Notched Play Post

Age Range: 5-12y



Timber Tower

Age Range: 5-12y

Maplewood Park Playground Improvements

Play Equipment 02

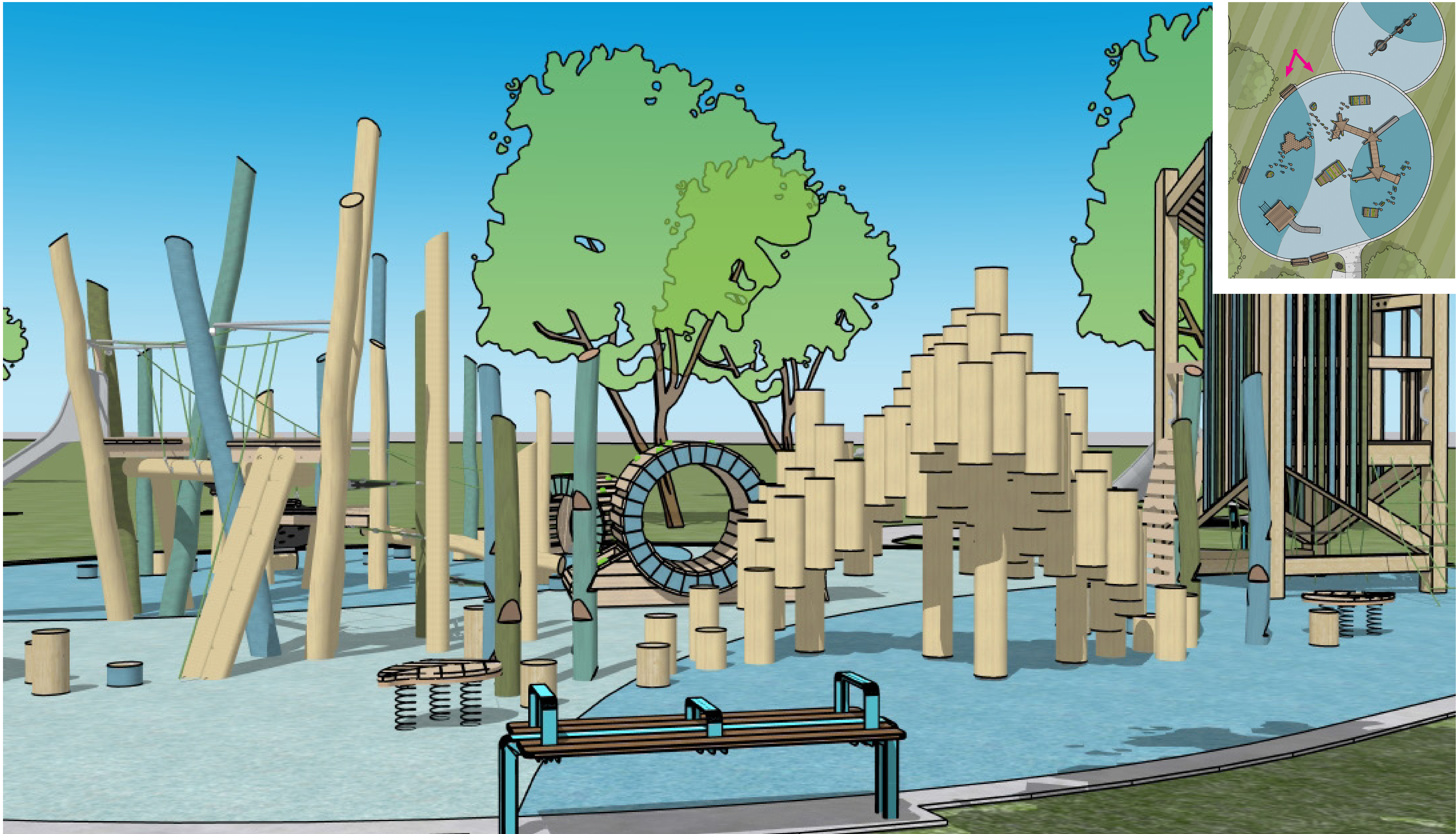
350 Maplewood Drive, Rochester, NY
July 11, 2024



Maplewood Park Playground Improvements

3D View 01

350 Maplewood Drive, Rochester, NY
July 11, 2024



Maplewood Park Playground Improvements

3D View 02

350 Maplewood Drive, Rochester, NY
July 11, 2024



Maplewood Park Playground Improvements

3D View 03

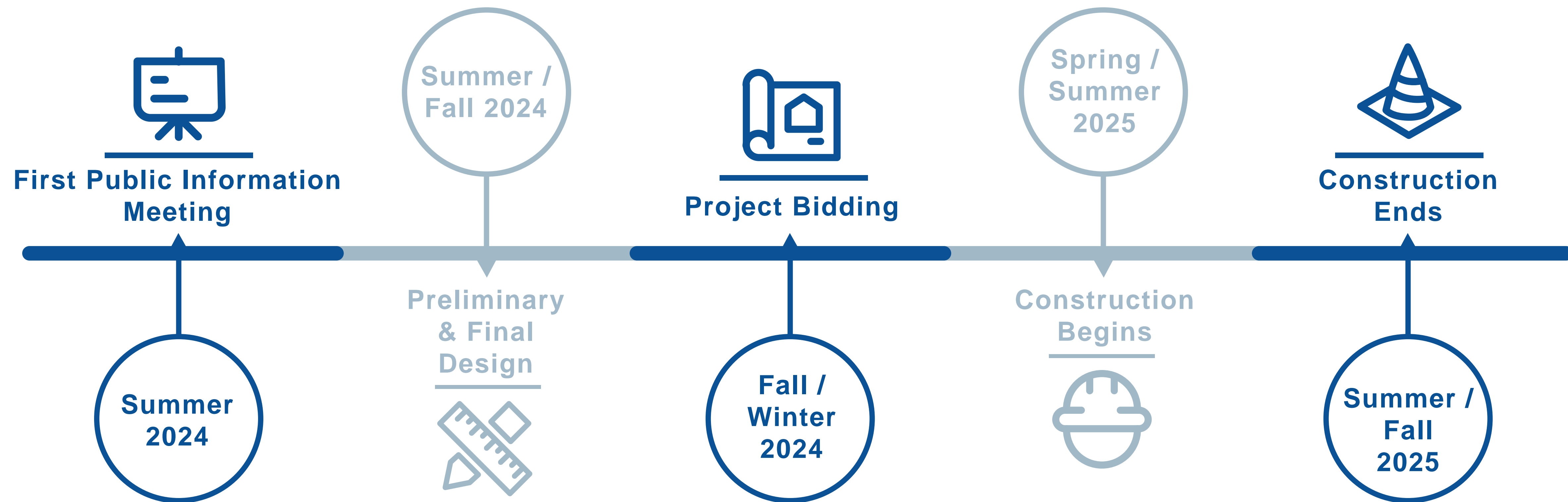
350 Maplewood Drive, Rochester, NY
July 11, 2024



Maplewood Park Playground Improvements

3D View 04

350 Maplewood Drive, Rochester, NY
July 11, 2024



THANK YOU!

For additional information, please contact:

Jeffery J Mroczek, R.L.A.

City of Rochester Department of
Environmental Services

(585) 428-7124

Jeff.Mroczek@CityofRochester.gov







Project Website:

<https://www.cityofrochester.gov/departments/des/maplewood-nature-center-and-playground-project>



Timeline of Projects

Timeline of Maplewood Park Projects

	2023				2024				2025				CY 2026				
	Q1	Q2	Q3	Q4	Q1	Q2	Q3	Q4	Q1	Q2	Q3	Q4	Q1	Q2	Q3	Q4	
NATURE CENTER	ENGINEERING & DESIGN				BID &	AWARD			CONSTRUCTION								
TRAIL IMPROVEMENTS		ENGINEERING & DESIGN							BID & AWARD		CONSTRUCTION						
PLAYGROUND IMPROVEMENTS					ENGINEERING	& DESIGN			BID & AWARD		CONSTRUCTION						

Let's continue the discussion...

IN PERSON:

- To view project boards, ask questions and provide feedback to the project team, please visit the stations in the back of the room.
- Comments can be discussed directly with design team members or submitted on comment sheets provided.

VIRTUAL PARTICIPANTS:

- Please visit the links on the next page to view the presentation materials virtually. The webpages provide direct email links to the project managers to provide feedback and leave questions for the project team.
- Links to the project web pages have also been copied and pasted into the meeting chat.
- **Comments may be submitted up to two weeks after the meeting - Thursday, July 25th.**

Thank you for your time!

For More Information...

Maplewood Park Nature Center

www.cityofrochester.gov/maplewoodnaturecenter/

Project Manager: Laura Civiletti - Laura.Civiletti@CityofRochester.Gov

Maplewood Park Trail Improvements

www.cityofrochester.gov/maplewoodtrail/

Project Manager: Tyler Burke - Tyler.Burke@CityofRochester.Gov

Maplewood Park Playground Improvements

www.cityofrochester.gov/maplewoodplay/

Project Manager: Jeff Mroczek – Jeff.Mroczek@CityofRochester.Gov