



Genesee Crossroads Park

Revitalization Project – Public Meeting ROC the Riverway (Main to Andrews St. East)

Joseph A. Floreano Rochester Riverside Convention Center

First Floor-Riverside Court

August 12, 2024

6:00 PM- 7:30 PM



This presentation was prepared with funds provided by the New York State Department of State under Title 11 of the Environmental Protection Fund.

TYLin

MNLA



**City of Rochester, NY
Malik D. Evans, Mayor
Rochester City Council**



▶ Project Team / Introductions

City of Rochester

- ▶ Department of Environmental Services/Bureau of Architecture and Engineering
 - Tom Kicior, AICP, Manager of Special Projects
 - Jason VanDemark, RA, Senior Architect
 - Richard Perrin, AICP, DES Commissioner
 - Holly Barret, PE, City Engineer

Design Team

- ▶ TY Lin International-Project Lead, Structural, Civil and MEP
 - Nicholas Presciutti, PE, Project Manager
 - Nathan Buczek, PE, Civil Engineer Lead
 - Evert Garcia, PE, Project Engineer
- ▶ MNLA-Landscape Architecture and Master Planning
 - Greg Leonard, RLA, Landscape Architecture Lead
- ▶ C.T. Male Associates- Surveying
- ▶ Terracon - Geotechnical Engineering

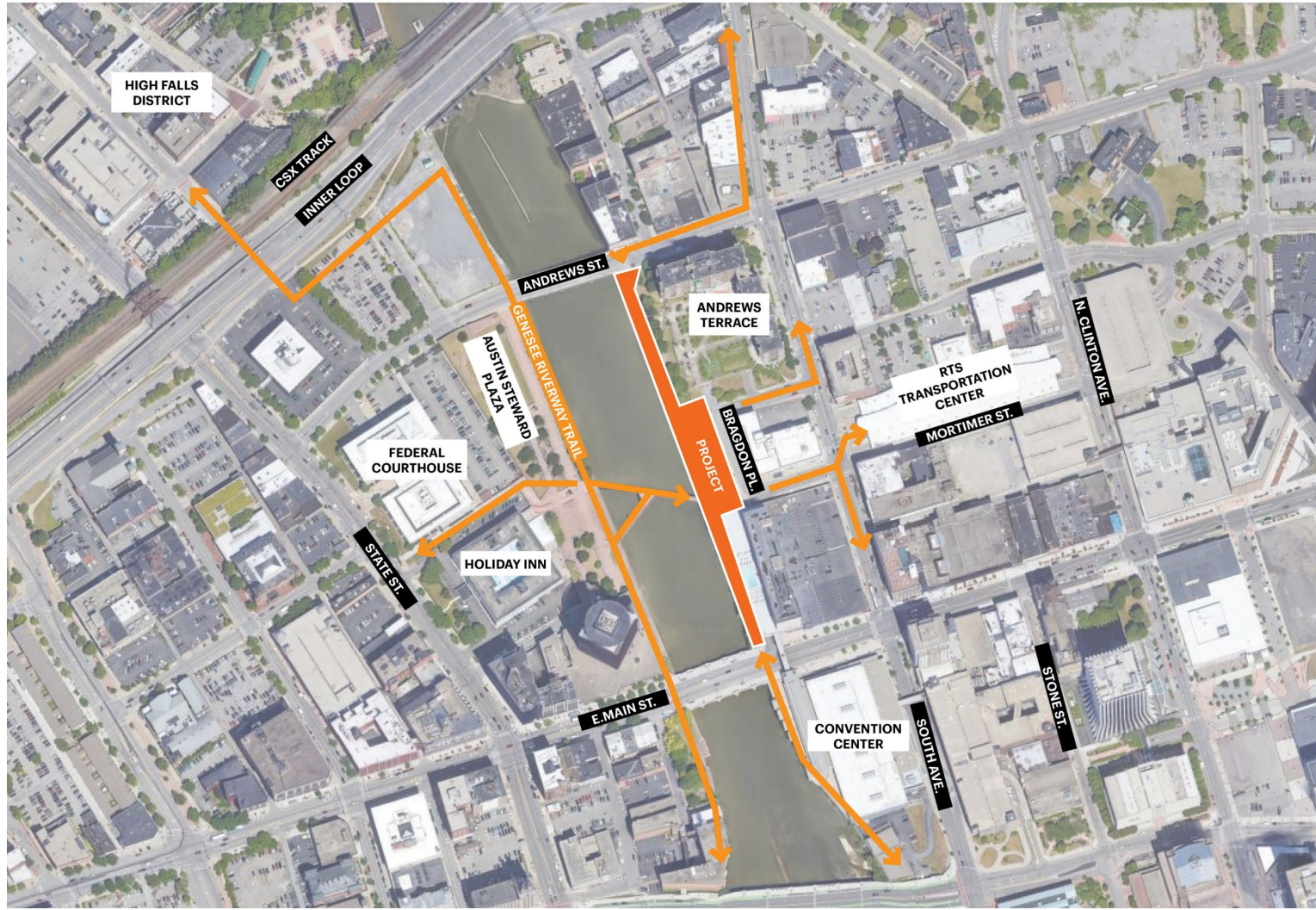
Meeting Agenda

- ▶ Project Background
- ▶ ROC the Riverway
- ▶ Project Objectives
- ▶ Existing Site Conditions & Challenges
- ▶ Project Concepts
- ▶ Timeline & Next Steps
- ▶ Break-out session:
interactive feedback / Q&A



Genesee Crossroads Park Project Background

- ▶ Linear public park along the east bank of the Genesee River.
- ▶ Connected to Austin Steward Plaza (formerly Charles Carroll Plaza), via the Sister Cities Pedestrian Bridge.
- ▶ Part of a significant East/West pedestrian travel route between downtown destinations on either side of the river.
- ▶ Constructed in 1973, renovated in 1984.
- ▶ NYS Department of State Grant Awarded, and City funds committed to revitalization of the Park as part of ROC the Riverway– (\$5,125,000).

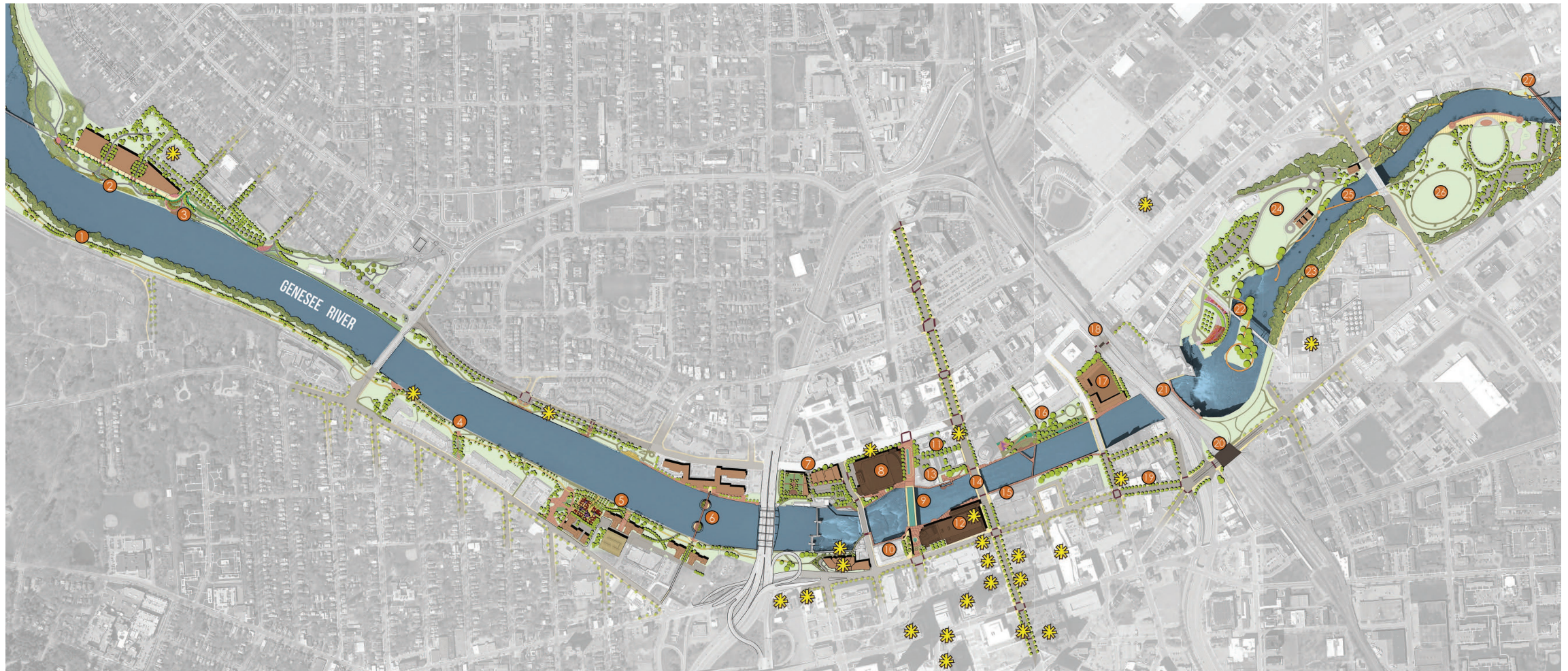


Project Context:

- ▶ 2018 ROC the Riverway Plan
- ▶ Purpose:
 - Revitalize the Genesee Riverfront in the City of Rochester by implementing priority riverfront projects.
- ▶ Objectives:
 - Improve riverfront access
 - Create accessible Riverway Trail on both sides of the river
 - Create public spaces and gathering spaces
 - Economic development
 - Repair existing infrastructure and public sites
 - Increased activity and safety



Project Context: ROC the Riverway



ROC the Riverway: Austin Steward Plaza and the Sister Cities Bridge

- ▶ Austin Steward Plaza (formerly Charles Carroll Plaza) connected to Genesee Crossroads via the Sister Cities Bridge
- ▶ Construction in two phases, now substantially complete
- ▶ Final bridge improvements underway & ADA/Bike connection to State St. in-construction (Fall completion)
- ▶ Project shares many goals with ROC the Riverway
 - ADA Accessibility
 - River Access and Views
 - Public Safety
 - Etc.



Genesee Crossroads Park Revitalization Objectives

- ▶ **Access:** Provide full ADA access, and bike access to Park and Riverway Trail.
- ▶ **Public Safety:** Remove walls, eliminate hidden spaces, open views, connect upper and lower trails, increase activity, improve lighting, (Crime Prevention Through Environmental Design).



Genesee Crossroads Park Revitalization Objectives-Cont.

- ▶ **Connectivity:** Improve east/west & north/south connections, expand Riverway Trail to E. Main St., connect public right-of-way and park with existing lower trail.
- ▶ **Vitality:** Create an activate public riverfront space, through upgraded park amenities, (landscaping, seating, lighting) safety improvements, and enhanced access.



TYLin

MNLA



City of Rochester, NY
Malik D. Evans, Mayor
Rochester City Council

Existing Site Conditions & Challenges



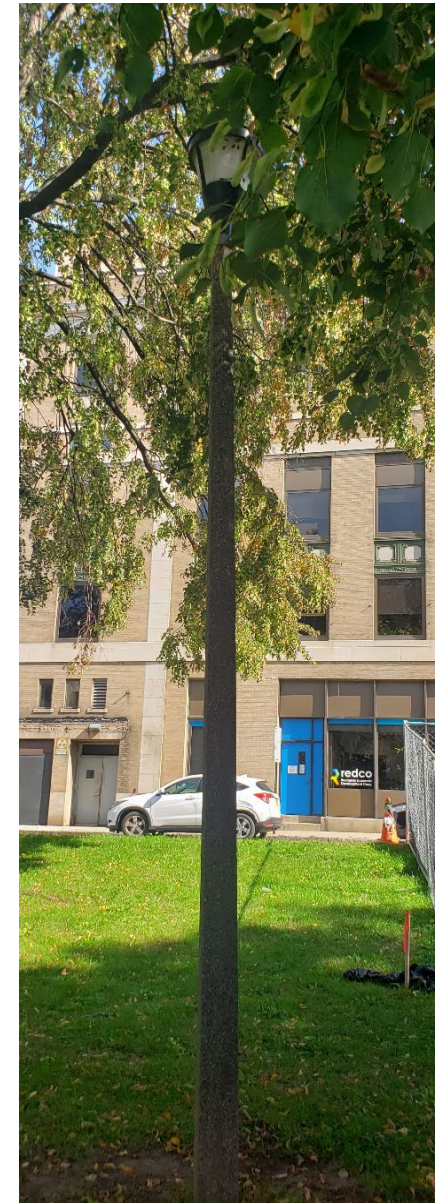
Site Conditions

- ▶ Aging Infrastructure
- ▶ Vandalism
- ▶ Damaged Amenities
- ▶ Underutilized Space
- ▶ Lack of Connectivity



Site Conditions – Public Safety

- ▶ Existing concerns with public safety and crime in the park
- ▶ *Crime Prevention Through Environmental Design (CPTED)*
- ▶ Visual assessment of design issues and their public safety impacts
 - Visibility to and from the Trail and within the Park
 - Obstructed views creating hidden spaces
 - Lighting concerns



Site Conditions - Public Safety Cont.

Visibility Issues

- Walls, Walls, & More Walls!
- Existing grading limits views to/from the trail
- Landscaping type and maintenance



Site Conditions-Access

- ▶ ADA Access Issues
- ▶ Bike Access Issues



Steep ramp to Riverway Trail



Staircases to Park, Riverway Trail, and to public sidewalks



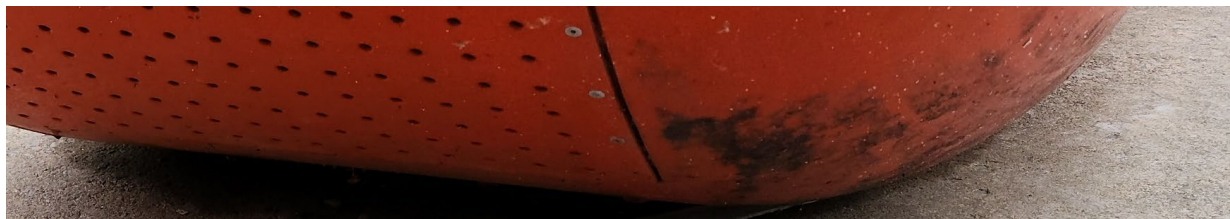
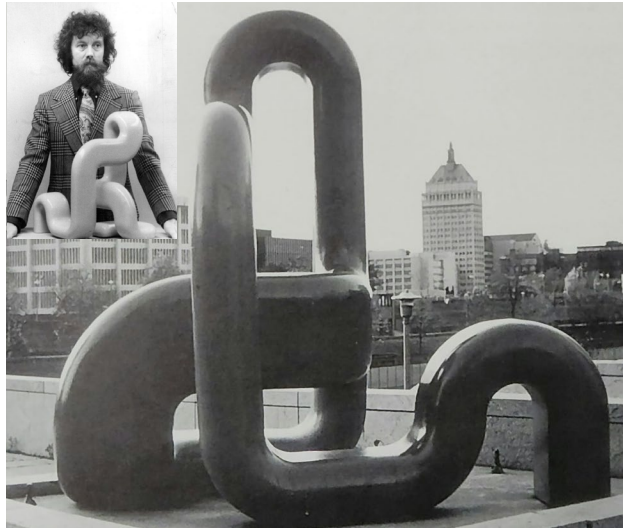
Site Conditions-Connectivity

- ▶ East/west connectivity through park
- ▶ Riverway Trail isolation
 - Grade separation
 - Lack of north/south connections
- ▶ Unused below grade riverfront land between Sister Cities and E. Main St. adjacent to the Hotel



Site Conditions: Public Art and Sister Cities Garden

Past and Present



Wendel Castle's Twist Sculpture (1974)



Sister Cities Garden

TYLin

MNLA

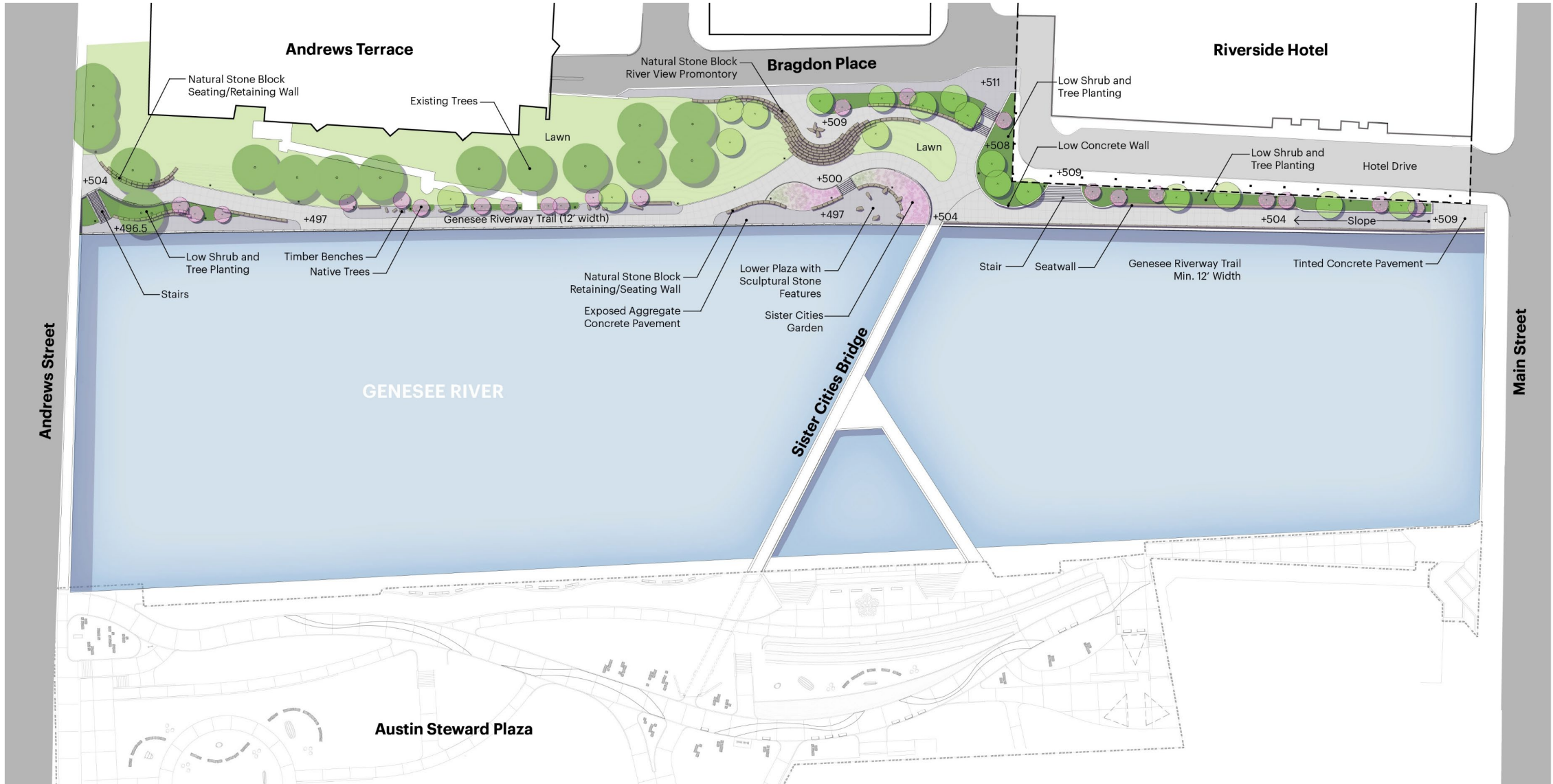


City of Rochester, NY
Malik D. Evans, Mayor
Rochester City Council

Design Concepts

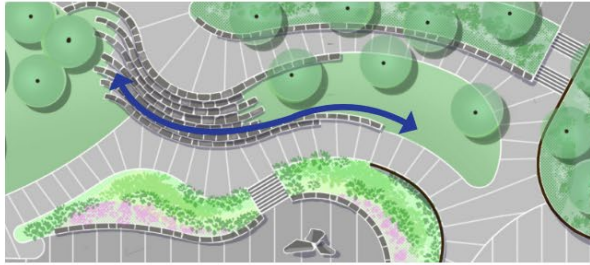


Conceptual Design



Design Language

PARK FORM

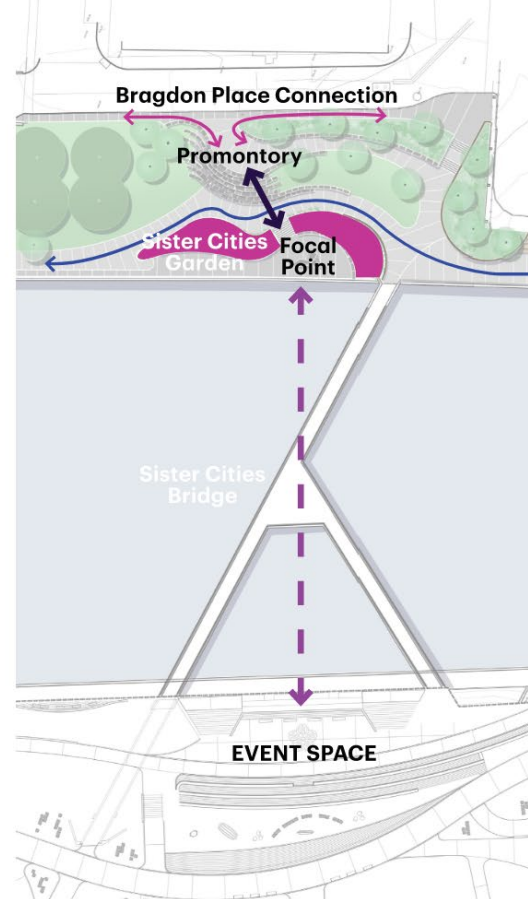


The curvilinear park forms draw inspiration from geologic features found in the region and associated with the natural force of water from rivers and streams acted upon stone.

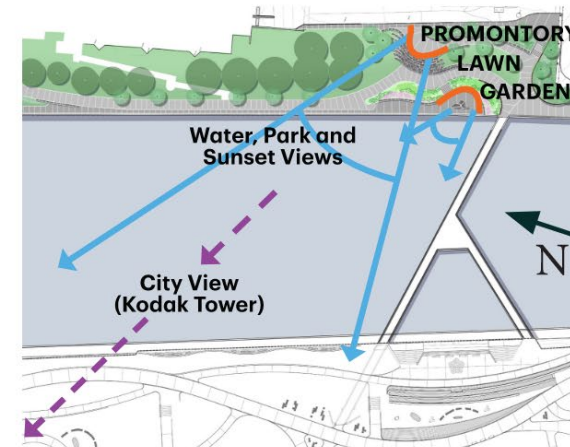


PARK CONNECTIVITY

The park establishes a strong relationship with Charles Carroll Park across the river. The more focused Sister City Garden Space corresponds directly across the Sister Cities Bridge with a large civic event space. Pathway geometries are also reflected and thematically help link the riverfront.



PARK VIEWS



The promontory and garden both orient the park to the open water space between bridges and long views to the opposite bank, Kodak Building, and the setting sun in the west - A vista not possible elsewhere in downtown Rochester.

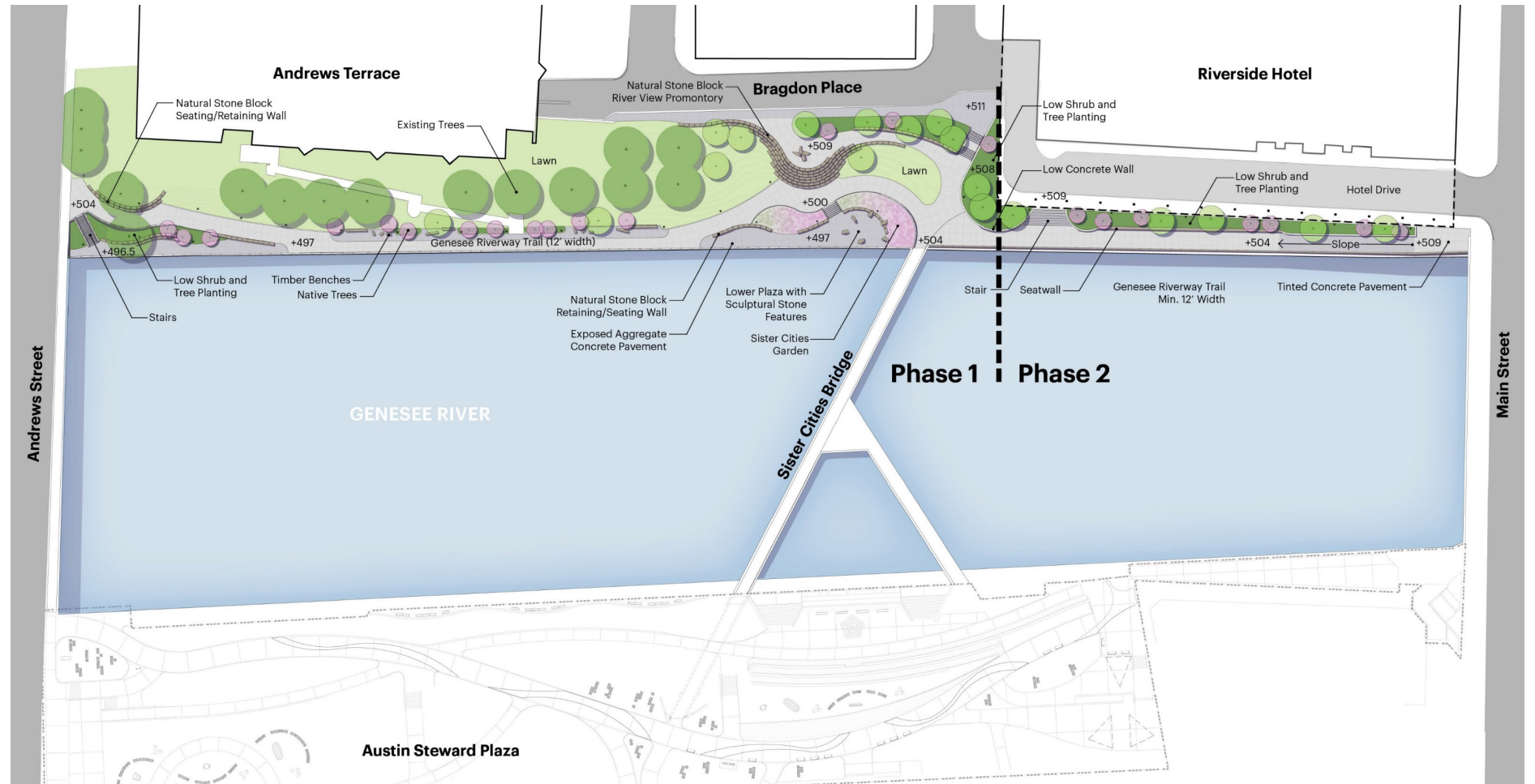


Revised Concept

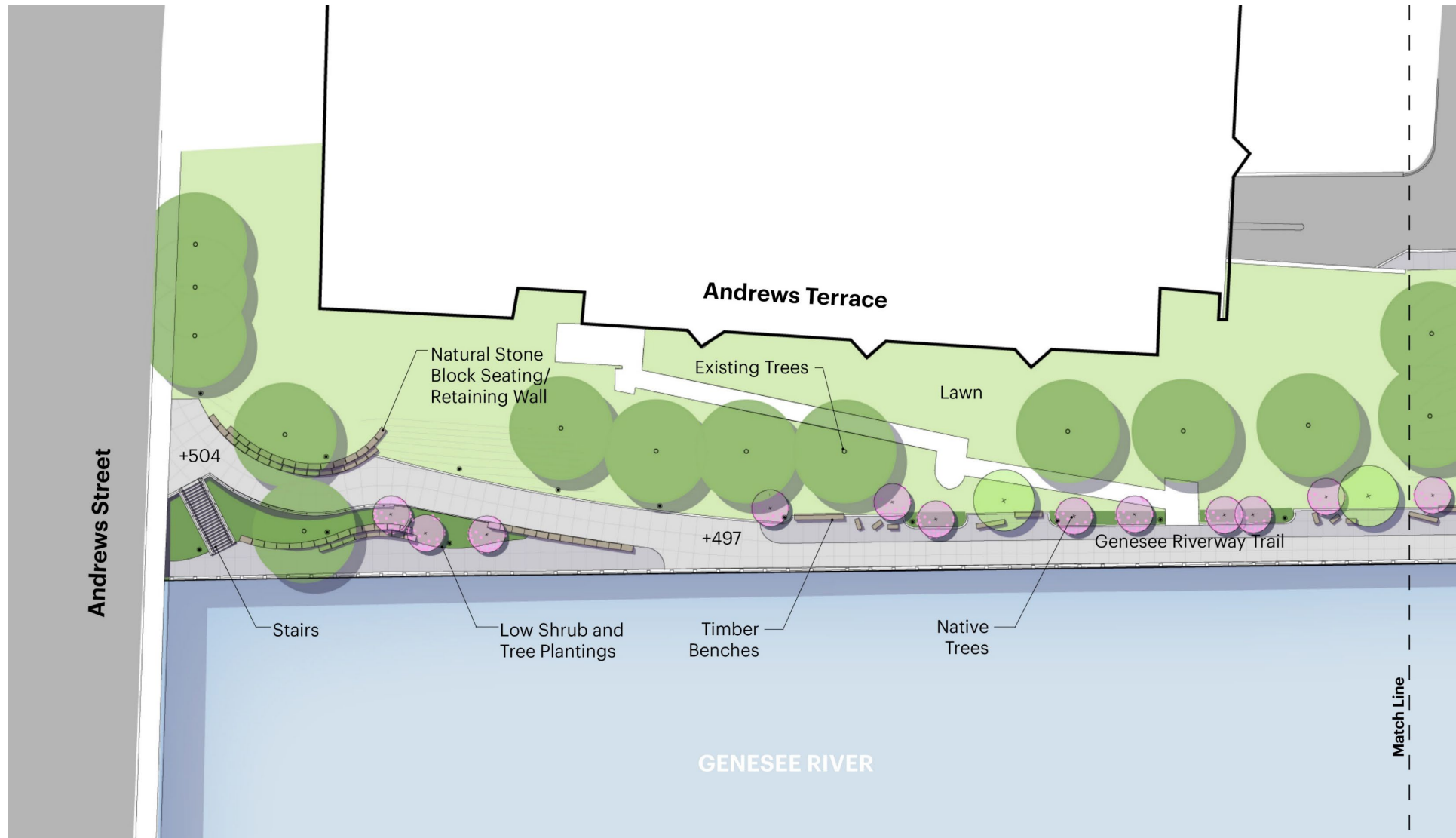
ROC the Riverway - Main to Andrews Street, East Bank

Phasing

- ▶ Project Estimate / Funding Limitations
- ▶ Phase 1 (Current): Sister Cities Bridge to Andrews St.
- ▶ Phase 2 (Future): Trail expansion: Sister Cities Bridge to Main St.



North Enlargement



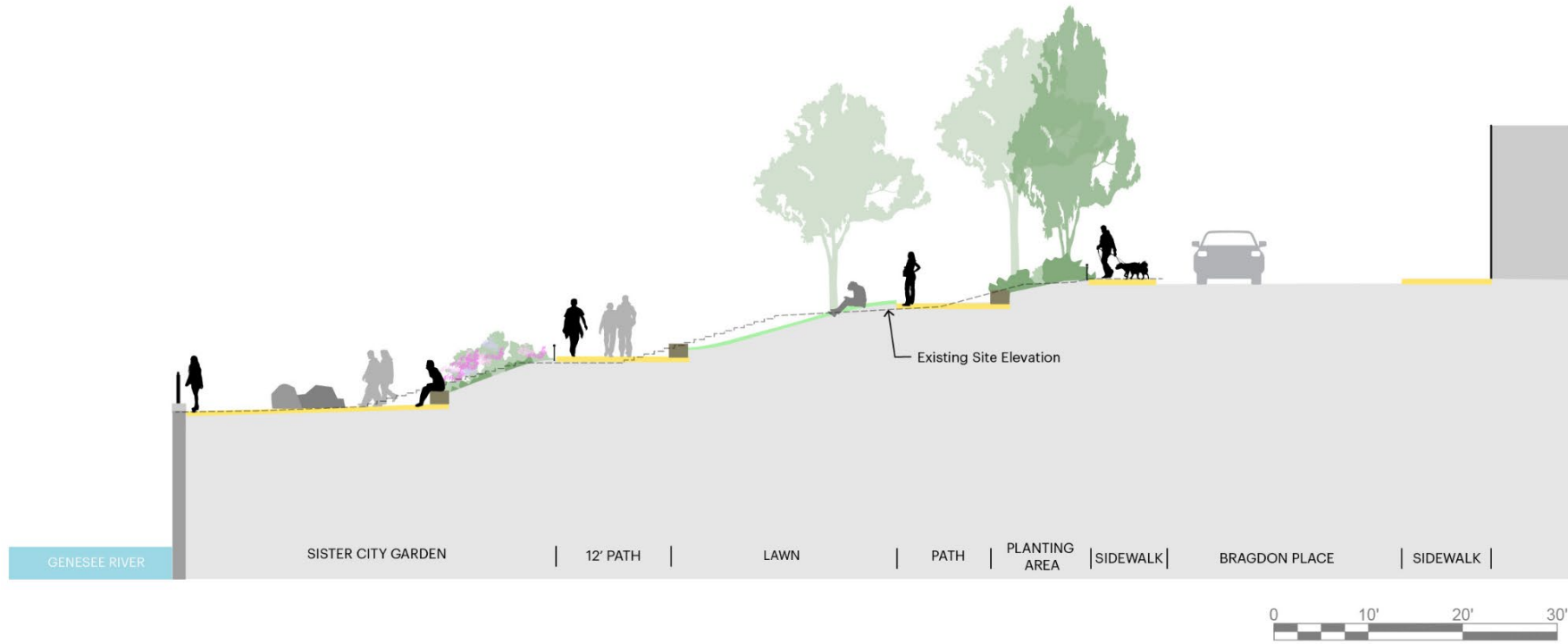
Central Enlargement



Conceptual Design

MNLA

Section Views



Section A

ROC the Riverway - Main to Andrews Street, East Bank

Conceptual Design-Existing View



Conceptual Design



Conceptual Design-Existing View



Conceptual Design



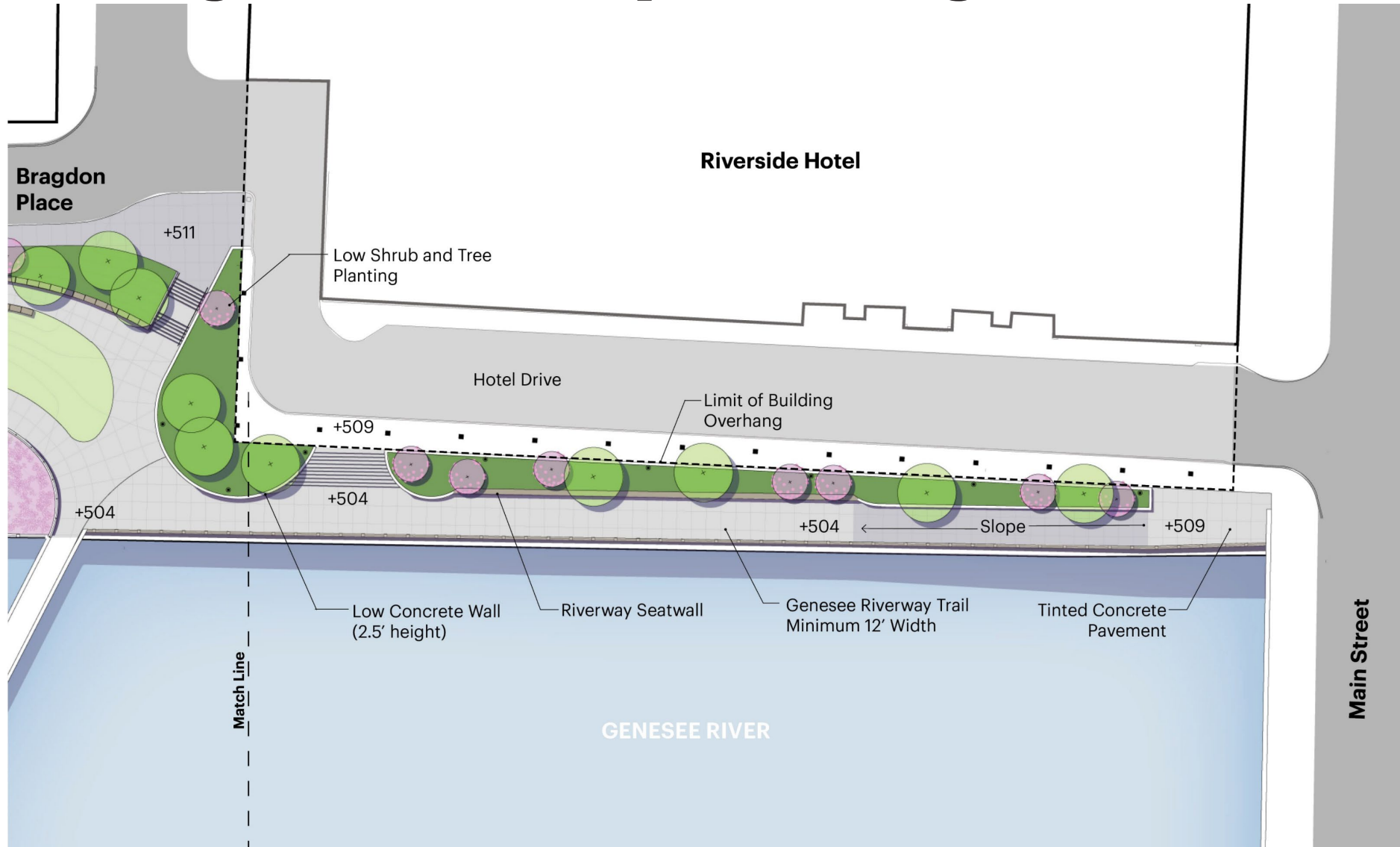
Conceptual Design-Existing View



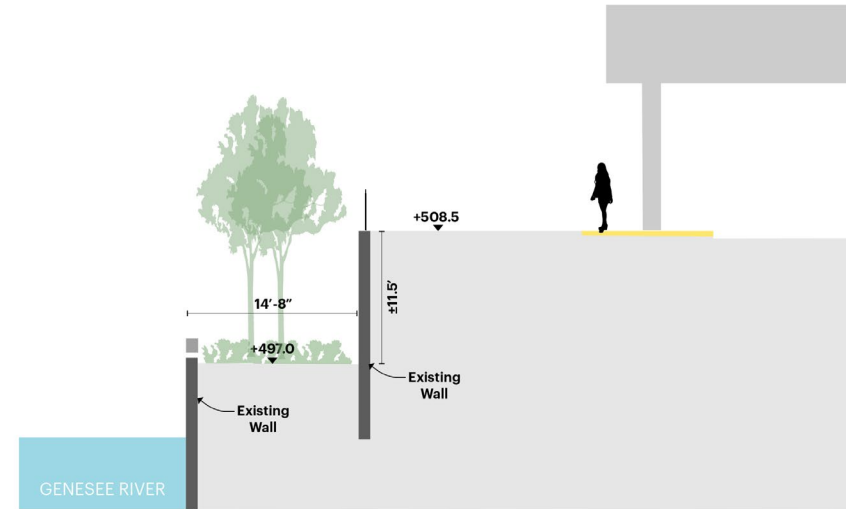
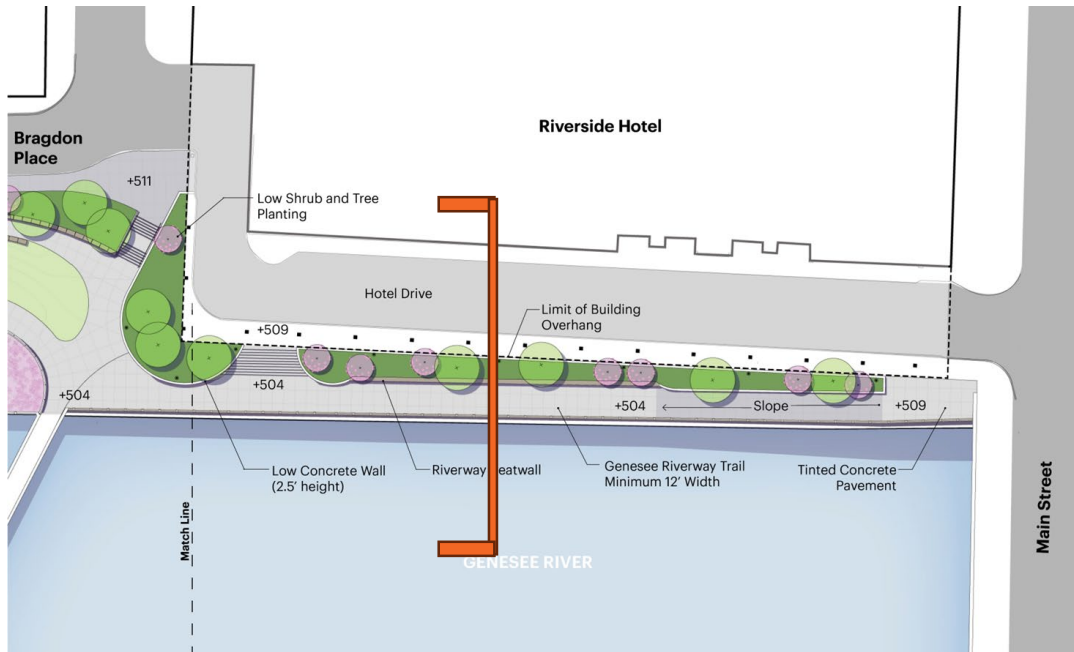
Conceptual Design



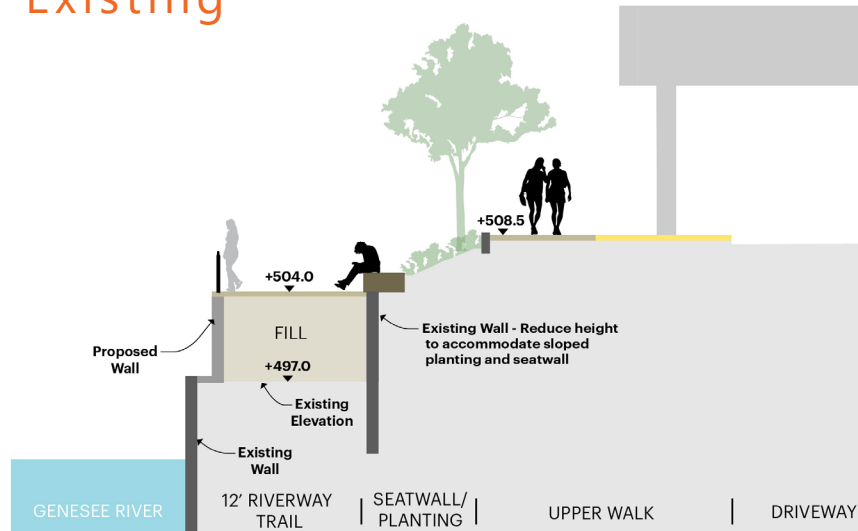
South Enlargement-Conceptual Design Phase 2



Conceptual Design-Phase 2



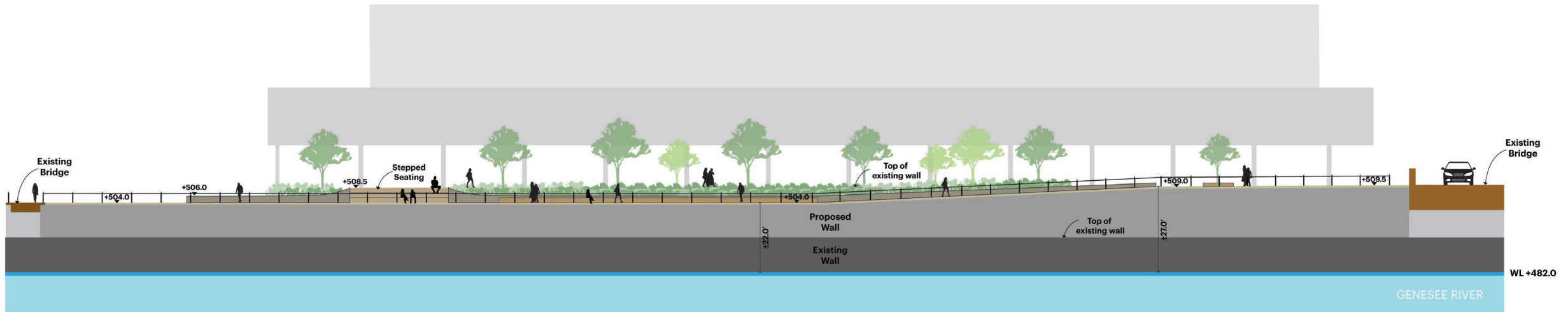
Existing



Proposed

Conceptual Design-Phase 2

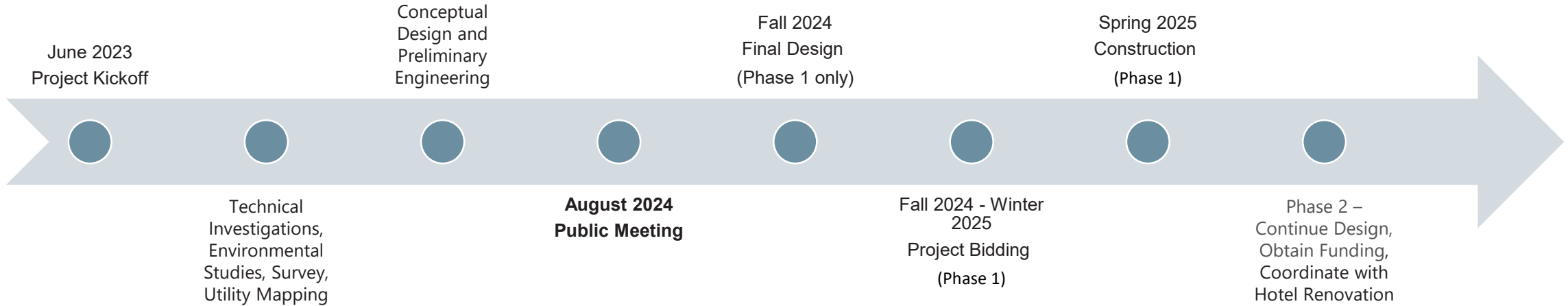
Elevation



Park Safety Principles



Project Timeline



TYLin

MNLA



City of Rochester, NY
Malik D. Evans, Mayor
Rochester City Council

How to Provide Feedback and Stay Informed?



▶ How to Provide Feedback and Stay Informed?

- ▶ Feedback opportunities tonight
 - In-person: concept feedback & individual Q&A
 - Virtual: online concept feedback & Q&A (links on next slide)
- ▶ Additional Questions/Comments?
 - Tom Kicior, AICP, City of Rochester, thomas.kicior@cityofrochester.gov
 - Nick Presciutti, PE, T.Y. Lin, nicholas.presciutti@tylin.com
- ▶ For project updates visit:
www.cityofrochester.gov/GeneseeCrossroads

