



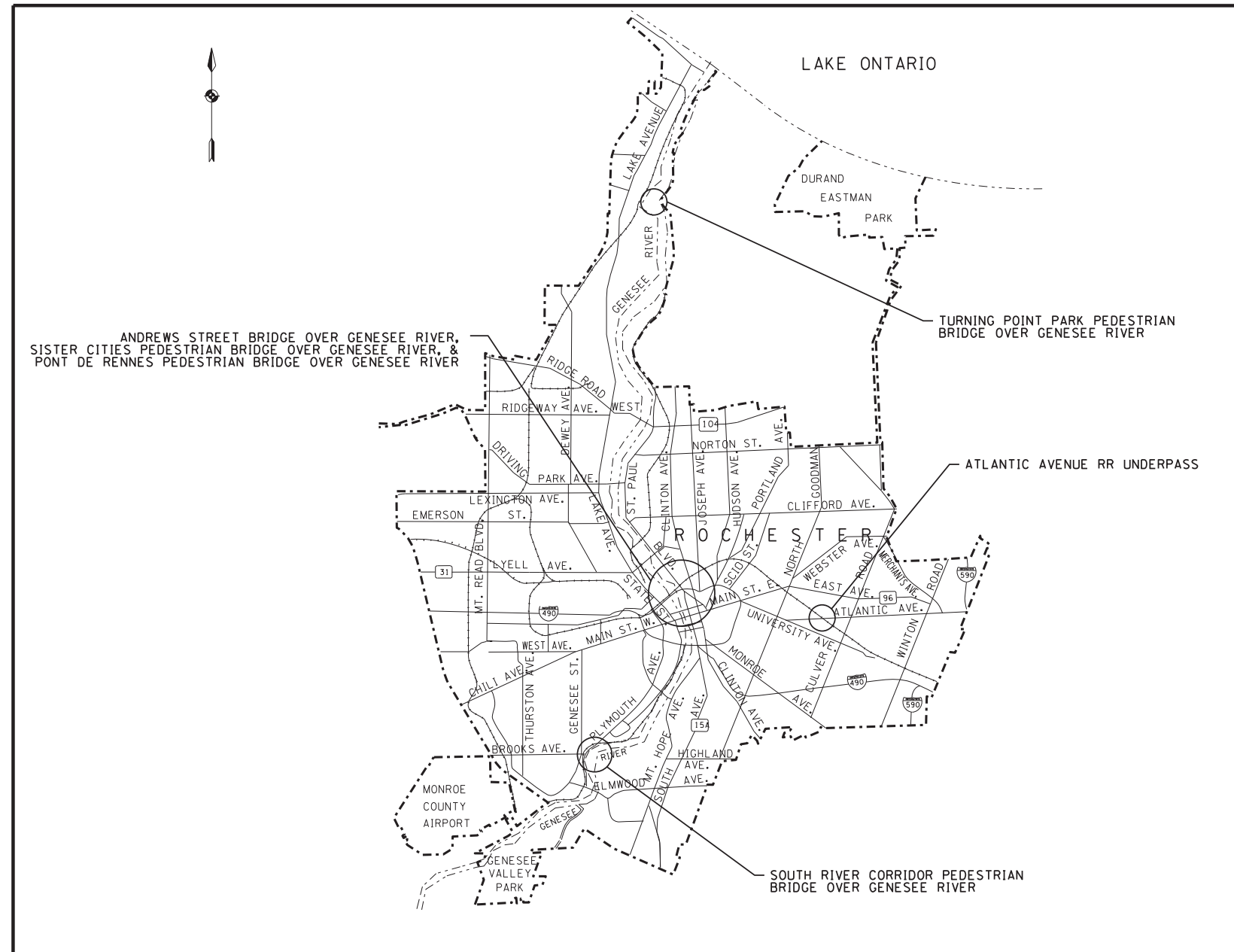
CITY OF ROCHESTER

Department of Environmental Services

MAINTENANCE REPAIRS

TO CITY BRIDGES & VARIOUS FACILITIES

F.Y. 2013
PROJECT CODE 13212



PROJECT SITE

Paul M. Holahan 4-17-13

PAUL M. HOLAHAN DATE
COMMISSIONER, CITY OF ROCHESTER
DEPARTMENT OF ENVIRONMENTAL SERVICES

James R. McIntosh 4/17/13

JAMES R. MCINTOSH, P.E. DATE
CITY ENGINEER
CITY OF ROCHESTER

John M. Papponetti 4/17/13

JOHN M. PAPPONETTI, P.E. DATE
N.Y.S.P.E. LICENSE NO. 083219

LABELLA
Associates, P.C.

300 STATE STREET
ROCHESTER, NY 14614
P: (585) 454-6110
F: (585) 454-3066
WWW.LABELLAPC.COM



©2013 08/11 © 2012

GENERAL NOTES

- MATERIAL AND CONSTRUCTION SPECIFICATIONS:
 - CITY OF ROCHESTER STANDARD CONSTRUCTION CONTRACT DOCUMENTS, NOVEMBER 1, 1991.
 - CONSTRUCTION AND MATERIALS, NEW YORK STATE DEPARTMENT OF TRANSPORTATION STANDARD SPECIFICATIONS, OFFICE OF ENGINEERING, DATED MAY 1, 2008 WITH CURRENT ADDITIONS AND MODIFICATIONS.
 - SPECIAL SPECIFICATIONS INCLUDED IN THE CONTRACT DOCUMENTS.
- THE CONTRACTOR SHALL EXAMINE AND VERIFY IN THE FIELD ALL EXISTING AND GIVEN CONDITIONS AND DIMENSIONS WITH THOSE SHOWN ON THE CONTRACT PLANS, IF FIELD CONDITIONS AND DIMENSIONS DIFFER FROM THOSE SHOWN ON THE CONTRACT PLANS, THE CONTRACTOR SHALL USE THE FIELD CONDITIONS AND DIMENSIONS AND MAKE THE APPROPRIATE CHANGES TO THOSE SHOWN ON THE PLANS AS APPROVED BY THE ENGINEER. THE RESULTS OF THIS CHECK OF CONDITIONS AND DIMENSIONS SHALL BE SO NOTED ON THE DRAWINGS SUBMITTED FOR APPROVAL.
- THERE SHALL BE NO CLAIM AGAINST THE CITY OF ROCHESTER MADE BY THE CONTRACTOR BETWEEN ACTUAL FIELD CONDITIONS AND THOSE SHOWN BY THE DETAILS AND DIMENSIONS ON THE CONTRACT PLANS. THE CONTRACTOR SHALL BE PAID AT THE UNIT BID PRICE FOR THE ACTUAL QUANTITIES OF MATERIALS USED OR FOR THE WORK PERFORMED AS INDICATED BY THE VARIOUS ITEMS IN THE CONTRACT.
- IT SHALL BE THE CONTRACTOR'S OBLIGATION AND RESPONSIBILITY TO PROTECT AND DETERMINE THE EXACT LOCATION OF ANY UNDERGROUND UTILITIES. THE METHOD OF REMOVAL OF EXISTING ROADWAY, SHOULDER, SIDEWALK PAVEMENT, OR SOIL IN THE IMMEDIATE VICINITY OF ANY UNDERGROUND UTILITY SHALL BE SUBJECT TO THE APPROVAL OF THE ENGINEER.
- THE CONTRACTOR IS ADVISED THAT ADDITIONAL NOTES WILL BE FOUND ON SUBSEQUENT SHEETS OF THE CONTRACT PLANS AND SUCH NOTES, WHILE PERTAINING TO THE SPECIFIC DRAWINGS THEY ARE PLACED ON, ALSO SUPPLEMENT THE GENERAL NOTES LISTED HEREIN.
- NO PAYMENT SHALL BE MADE FOR WORK CALLED FOR BY NOTES ON THE CONTRACT PLANS, IN THE SPECIFICATIONS AND UNDER HEADING GENERAL NOTES UNLESS PAYMENT IS SPECIFICALLY INDICATED BY ITEM NUMBER. THE COST OF WORK FOR WHICH NO PAYMENT IS INDICATED SHALL BE INCLUDED IN THE UNIT PRICES BID FOR VARIOUS ITEMS OF THIS CONTRACT.
- DIMENSIONS OF THE EXISTING STRUCTURES SHOWN ON THESE PLANS ARE FOR GENERAL REFERENCE ONLY. THEY HAVE BEEN TAKEN FROM THE ORIGINAL CONSTRUCTION DRAWINGS AND ARE NOT GUARANTEED. THE CONTRACTOR SHALL TAKE FIELD MEASUREMENTS AS NECESSARY TO ASSURE PROPER FIT OF THE FINISHED WORK, AND THE CONTRACTOR SHALL ASSUME FULL RESPONSIBILITY FOR THEIR ACCURACY. WHEN SHOP DRAWINGS BASED ON FIELD MEASUREMENTS ARE SUBMITTED FOR APPROVAL, THE FIELD MEASUREMENTS MADE SHALL BE INDICATED ON THE SHOP DRAWINGS SUBMITTED FOR REFERENCE OF THE REVIEWER.
- THE CONTRACTOR SHALL VISIT THE SITES BEFORE SUBMITTING THEIR BID TO FAMILIARIZE THEMSELV WITH THE PRESENT CONDITION AND TO JUDGE FOR THEMSELV THE EXTENT AND NATURE OF THE WORK TO BE DONE UNDER THIS CONTRACT. NO EXTRA COMPENSATION SHALL BE ALLOWED TO THE CONTRACTOR BECAUSE OF FAILURE TO INCLUDE ALL ITEMS AND MATERIALS IN THE BID WHICH THE CONTRACTOR IS REQUIRED TO FURNISH IN ACCORDANCE WITH THE CONTRACT DOCUMENTS.
- THE CONTRACTOR SHALL BE RESPONSIBLE FOR OBTAINING ALL PERMITS WHICH MAY BE REQUIRED TO PERFORM THE WORK AS INDICATED IN THE CONTRACT DOCUMENTS.
- THE CONTRACTOR'S PROPOSED SCHEDULE SHALL BE SUBMITTED AT THE PRE-CONSTRUCTION MEETING AND ANY CHANGES OR MODIFICATIONS SHALL BE SUBMITTED TEN (10) CALENDAR DAYS PRIOR TO WORK STARTING AT A SPECIFIC SITE.
- IF WORK OUTSIDE THE STREET RIGHT-OF-WAY IS REQUIRED, THE CONTRACTOR SHALL BE REQUIRED TO OBTAIN A "GRADING RELEASE" FROM THE RESPECTIVE PROPERTY OWNER.
- THE CONTRACTOR SHALL PROTECT ALL CITY AND PRIVATELY OWNED EXISTING MATERIALS (INCLUDING LANDSCAPING) FROM DAMAGE OR DEFACEMENT WHICH MAY BE CAUSED BY HIS EQUIPMENT AND LABOR. SUCH DAMAGE SHALL BE PROPERLY CLEANED AND/OR REPAIRED/REPLACED TO THE SATISFACTION OF THE PROJECT ENGINEER AT NO COST TO THE CITY.
- CONTRACTOR SHALL PROVIDE ACCESS TO THE REPAIRS TO THE EIC OR PROJECT ENGINEER.

RECONSTRUCTION NOTES

- THE CONTRACTOR'S ATTENTION IS DIRECTED TO THE FACT THAT, DUE TO THE NATURE OF RECONSTRUCTION PROJECTS, THE EXACT EXTENT OF RECONSTRUCTION WORK CANNOT ALWAYS BE ACCURATELY DETERMINED PRIOR TO THE COMMENCEMENT OF WORK. THESE CONTRACT DOCUMENTS HAVE BEEN PREPARED BASED ON FIELD INSPECTION AND OTHER INFORMATION AVAILABLE AT THE TIME. ACTUAL FIELD CONDITIONS MAY REQUIRE MODIFICATIONS TO CONSTRUCTION DETAILS AND WORK QUANTITIES. THE CONTRACTOR SHALL PERFORM THE WORK IN ACCORDANCE WITH FIELD CONDITIONS.
- THE CONTRACTOR SHALL PERFORM ALL WORK WITH CARE SO THAT ANY MATERIALS WHICH ARE TO REMAIN IN PLACE, OR WHICH ARE TO REMAIN THE PROPERTY OF THE CITY OF ROCHESTER, SHALL NOT BE DAMAGED. IF THE CONTRACTOR DAMAGES ANY MATERIALS WHICH ARE TO REMAIN IN PLACE, OR WHICH ARE TO REMAIN THE PROPERTY OF THE CITY OF ROCHESTER, THE DAMAGED MATERIALS SHALL BE REPAIRED OR REPLACED IN A MANNER SATISFACTORY TO THE ENGINEER AT THE EXPENSE OF THE CONTRACTOR.
- WHENEVER ITEMS IN THE CONTRACT REQUIRE MATERIALS TO BE REMOVED AND DISPOSED OF, THE COST OF SUPPLYING A DISPOSAL AREA AND TRANSPORTATION TO THAT AREA SHALL BE INCLUDED IN THE UNIT PRICES BID FOR THOSE ITEMS.
- ALL DETERIORATED CONCRETE SHALL BE REMOVED TO A DEPTH WHERE SOUND CONCRETE IS EXPOSED. BEFORE STARTING THIS WORK, THE CONTRACTOR SHALL SUBMIT TO THE ENGINEER FOR APPROVAL A PLAN SHOWING THE CONTRACTOR'S PROPOSED METHOD, EQUIPMENT, AND SEQUENCE FOR THE REMOVAL WORK. NO BLASTING OR DYNAMITING SHALL BE PERMITTED.
- EXPOSED REINFORCING STEEL WHICH IS TO REMAIN IN THE STRUCTURE SHALL BE SAND BLAST CLEANED & PROTECTED FROM DAMAGE TO THE SATISFACTION OF THE ENGINEER. ALL EXPOSED EXISTING REINFORCEMENT TO REMAIN WHICH HAS BEEN DAMAGED BY THE CONTRACTOR'S CONSTRUCTION OPERATIONS SHALL BE REPLACED AT THE CONTRACTOR'S EXPENSE.
- ALL NEW STEEL REINFORCEMENT USED IN THIS CONTRACT SHALL MEET THE REQUIREMENTS OF EPOXY COATED BAR REINFORCEMENT FOR STRUCTURES, ITEM 556.0202. COST OF SUPPLYING NEW EPOXY COATED BAR REINFORCEMENT SHALL BE INCLUDED IN THE COST FOR THE VARIOUS CONCRETE ITEMS.
- ALL EXPOSED EDGES OF CONCRETE ARE TO BE CHAMFERED 3/4 INCH UNLESS OTHERWISE NOTED.
- SURFACE OF NEW CONCRETE ARE TO BE RUBBED UPON REMOVAL OF THE FORMS TO THE SATISFACTION OF THE ENGINEER. THE COST TO BE INCLUDED IN THE PRICE BID FOR THE VARIOUS CONCRETE ITEMS.
- DURING REMOVAL OPERATIONS, THE CONTRACTOR SHALL NOT BE ALLOWED TO DROP WASTE CONCRETE, DEBRIS AND OTHER MATERIAL TO THE AREA BELOW THE BRIDGE EXCEPT WHERE THE PLANS SPECIFICALLY PERMIT THE DROPPING OF MATERIAL. PLATFORMS, NETS, SCREENS OR OTHER PROTECTIVE DEVICES SHALL BE USED TO CATCH THE MATERIAL. IF THE ENGINEER DETERMINES THAT ADEQUATE PROTECTIVE DEVICES ARE NOT BEING EMPLOYED, THE WORK SHALL BE SUSPENDED UNTIL ADEQUATE PROTECTION IS PROVIDED.
- ALL MATERIAL FALLING ON THE AREA BELOW AND ADJACENT TO THE BRIDGE SHALL BE REMOVED AND DISPOSED OF BY THE CONTRACTOR AT NO COST TO THE CITY.
- THE COST OF FURNISHING, INSTALLING, MAINTAINING, REMOVING AND DISPOSING OF ALL PLATFORMS, NETS, SCREENS OR OTHER PROTECTIVE DEVICES SHALL BE INCLUDED IN THE UNIT PRICES BID FOR THE APPROPRIATE ITEMS OF THE CONTRACT.
- ALL CONCRETE SURFACES RECEIVING NEW CONCRETE SHALL BE SANDBLASTED. PRIOR TO THE APPLICATION OF NEW CONCRETE, THE SURFACES SHALL BE AIR CLEANED THEN PRE-WET FOR 12 HOURS. THERE WILL BE NO SEPARATE PAYMENT FOR THIS WORK. THE COST SHALL BE INCLUDED IN THE UNIT PRICES BID FOR THE VARIOUS CONCRETE ITEMS IN THE CONTRACT.
- THE CONTRACTOR SHALL KEEP ALL BRIDGE DRAINS CLEAN AND FREE FLOWING DURING THE LIFE OF THE CONTRACT. THE COST SHALL BE INCLUDED IN THE UNIT PRICES BID FOR THE VARIOUS SUPERSTRUCTURE ITEMS IN THE CONTRACT.

BASIC WORK ZONE TRAFFIC CONTROL NOTES

- THE CONTRACTOR SHALL PROVIDE FOR SAFE VEHICULAR, PEDESTRIAN AND BICYCLE TRAFFIC AT ALL TIMES. PROPER WARNING, DANGER AND/OR DIRECTION SIGNS SHALL BE ERCTED AND MAINTAINED BY THE CONTRACTOR TO PROPERLY PROTECT AND DIRECT PUBLIC TRAVEL.
- ALL BASIC WORK ZONE TRAFFIC CONTROL PLANS, DEVELOPED BY THE CONTRACTOR, SHALL BE SUBMITTED TO THE PROJECT ENGINEER A MINIMUM OF FIVE (5) DAYS PRIOR TO ITS RESPECTIVE INSTALLATION.
- THE CONTRACTOR SHALL COORDINATE ALL WORK WITH THE CITY OF ROCHESTER'S SPECIAL EVENTS OFFICE (SEE SPECIAL EVENTS NOTES).
- MINIMUM REQUIREMENTS FOR BASIC WORK ZONE TRAFFIC CONTROL ARE SHOWN ON DRAWINGS TCP-1 THROUGH TCP-2.
- THE CONTRACTOR SHALL NOT PERFORM ANY CONSTRUCTION ACTIVITIES BETWEEN 5:00 PM AND 8:00 AM, UNLESS APPROVED BY THE ENGINEER.
- THE CONTRACTOR IS RESPONSIBLE FOR HAVING EACH SITE CLEANED AND OPEN TO TRAFFIC EACH WEEKEND FOR THE DURATION OF THE CONTRACT. THIS WILL BE PERFORMED AT NO COST TO THE CITY.
- CONSTRUCTION DURATION SHALL BE LIMITED TO A MAXIMUM OF TWO WEEKS PER SITE, UNLESS APPROVED BY THE PROJECT ENGINEER.

PAINTING NOTES

- THE CONTRACTOR IS ADVISED THAT NONE OF THE EXISTING PAINT ON ANDREWS STREET IS SUSPECTED TO CONTAIN LEAD. THE STRUCTURAL STEEL PAINTING SHALL BE PERFORMED IN ACCORDANCE WITH ITEMS 574.01nnnn AS INDICATED ON THE DRAWINGS.
- TOP COAT COLORS FOR EACH SITE ARE LISTED BELOW. THE CONTRACTOR MAY USE ANY PAINT SYSTEM FROM THE NYS DOT APPROVED MATERIALS LIST THAT IS APPROVED BY THE ENGINEER.

ANDREWS STREET OVER GENESEE RIVER PONT DE RENNES PED. BRIDGE	SW4072 CEDAR GREEN MATCH EXISTING
---	--------------------------------------
- THE CONTRACTOR SHALL SUBMIT TOP COAT COLOR SAMPLES TO THE ENGINEER FOR APPROVAL PRIOR TO PERFORMING ANY SURFACE PREPARATION OR APPLYING ANY PAINT.
- GROUND AND WATERWAY PROTECTION SHALL BE IMPLEMENTED AT EACH SITE WHERE PAINTING IS REQUIRED IN ACCORDANCE WITH THE REQUIREMENTS OF SECTION 570 IN THE NYS DOT STANDARD SPECIFICATIONS. COST TO BE INCLUDED IN THE UNIT BID PRICE FOR ITEM 574.01nnnn.
- THE CONTRACTOR IS ADVISED THAT THE EXISTING PAINT SYSTEM ON PONT DE RENNES HAS NOT BEEN TESTED AND SHALL BE ASSUMED TO CONTAIN LEAD. THE STRUCTURAL STEEL PAINTING SHALL BE PERFORMED IN ACCORDANCE WITH THE NYS DOT STANDARD SPECIFICATIONS SECTIONS 570, 571 AND 574. COST FOR PAINT REMOVAL, CONTAINMENT, AND PAINTING OF THE NEW AND DAMAGED AREAS SHALL BE INCLUDED IN THE UNIT PRICE BID FOR THE APPLICABLE STEEL REPLACEMENT ITEM.

SPECIAL EVENT NOTES

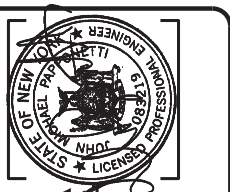
- A LIST OF SPECIAL EVENTS IS LISTED IN THE CONTRACT PROPOSAL BOOK. THIS LIST MAY NOT INCLUDE ALL SPECIAL EVENTS AND IT IS THE CONTRACTOR'S RESPONSIBILITY TO CONTACT ALL OF THE LISTED EVENT COORDINATORS AND BUSINESS OWNERS FOR A COMPLETE AND UPDATED LIST.
- DURING ALL SPECIAL EVENTS HOSTED AT OR NEAR A WORK SITE, THE CONTRACTOR SHALL DELAY WORK AND CLEAN THE SITE AT NO CHARGE TO THE CITY TO ACCOMMODATE THE EVENT.

CONDUIT CAUTION NOTE

- THE CONTRACTOR'S ATTENTION IS DIRECTED TO THE FACT THAT UTILITY CONDUITS MAY BE PRESENT IN THE STRUCTURAL SLABS, PARAPETS OR SIDEWALKS OF BRIDGES. THEIR EXISTENCE AND LOCATIONS SHALL BE FIELD VERIFIED. IF CONDUITS ARE PRESENT AND ARE ENCOUNTERED DURING CONSTRUCTION OPERATIONS, CARE SHALL BE EXERCISED NOT TO DAMAGE CONDUITS, EXPANSION COUPLINGS, OR CONTENTS OF CONDUITS. ANY DAMAGE SHALL BE REPAIRED TO THE SATISFACTION OF THE ENGINEER, AT NO COST TO THE CITY.

INDEX OF DRAWINGS		
DWG. NO.	TITLE	SHT. NO.
N-1	COVER SHEET	1
EQ-1	GENERAL NOTES AND INDEX	2
S-1	ESTIMATE OF QUANTITIES	3
S-1	ANDREWS STREET PLAN AND ELEVATION	4
S-2	ANDREWS STREET RAILING DETAILS	5
S-3	ATLANTIC AVENUE PLAN	6
S-4	PONT DE RENNES PLAN AND JOINT DETAILS	7
S-5	PONT DE RENNES REPAIR LOCATIONS AND BRIDGE ELEVATIONS	8
S-6	PONT DE RENNES REPAIR DETAILS - 1	9
S-7	PONT DE RENNES REPAIR DETAILS - 2	10
S-8	PONT DE RENNES REPAIR DETAILS - 3	11
S-9	PONT DE RENNES REPAIR DETAILS - 4	12
S-10	PONT DE RENNES REPAIR DETAILS - 5	13
S-11	PONT DE RENNES REPAIR DETAILS - 6	14
S-12	PONT DE RENNES REPAIR DETAILS - 7	15
S-13	SISTER CITIES PLAN AND SECTIONS	16
S-14	SOUTH RIVER CORRIDOR PEDESTRIAN BRIDGE PLAN AND SECTION	17
S-15	SOUTH RIVER CORRIDOR BRIDGE ELEVATION	18
S-16	SOUTH RIVER CORRIDOR JOINT DETAILS	19
S-17	TURNING POINT PARK PLAN AND SECTION	20
S-18	TURNING POINT PARK ABUTMENT REPAIRS	21
TCP-1	PEDESTRIAN BRIDGE BASIC WORK ZONE TRAFFIC CONTROL PLAN	22
TCP-2	TYPICAL BASIC WORK ZONE TRAFFIC CONTROL PLAN	23

NO.	1	REASON	BY	DATE
	2			
	3			
	4			
	5			
	6			



LABELLA
Associates, P.C.

300 STATE STREET
ROCHESTER, NY 14614
P: (585) 454-6110
F: (585) 454-3066
www.labellic.com

**MAINTENANCE REPAIRS
TO CITY BRIDGES AND
VARIOUS FACILITIES
F.Y. 2013**

CITY OF ROCHESTER
DEPARTMENT OF ENVIRONMENTAL SERVICES

**GENERAL NOTES
AND INDEX**

ISSUED FOR: **PS&E**

DATE: **APRIL 2013**

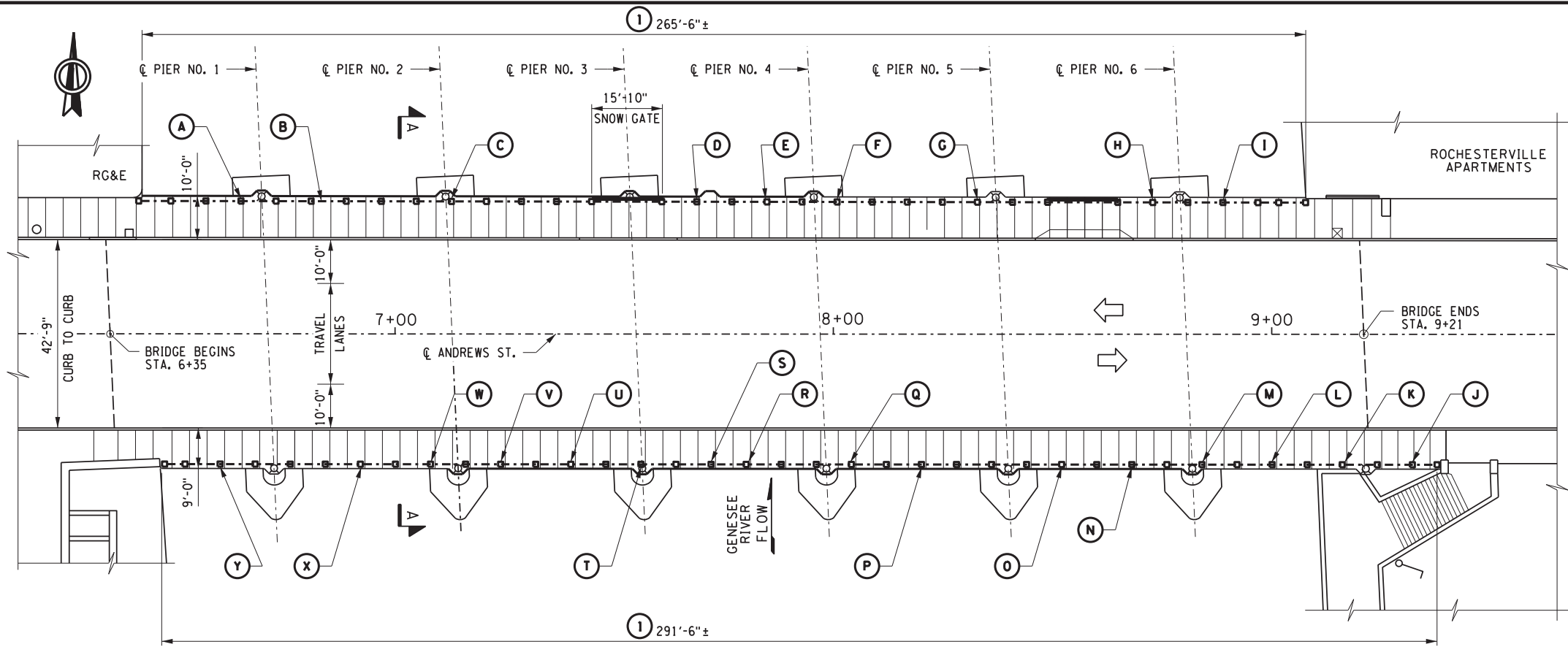
PROJECT/DRAWING NUMBER

212470.01

N-1

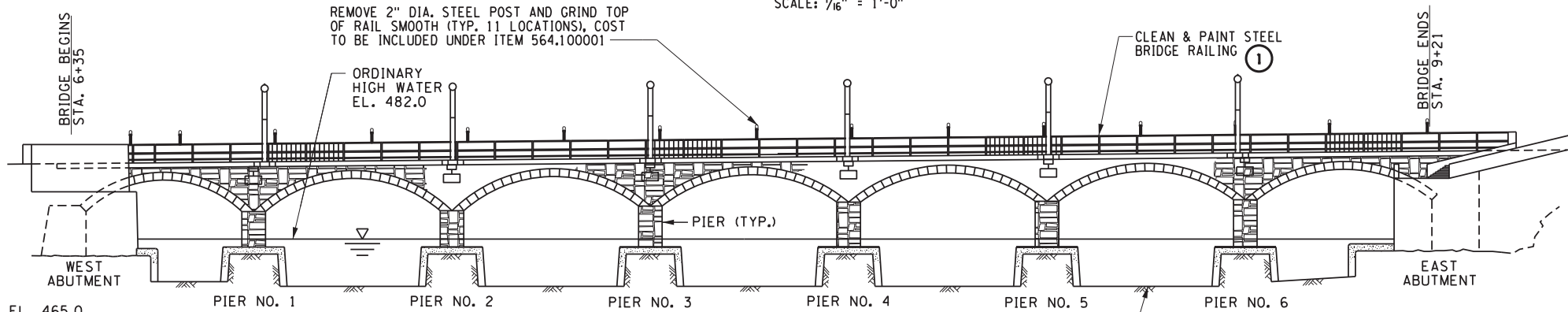
SHEET 2 OF 23

PLOT/DRAW: B:_High\ahlg...
 FILE PATH: C:\Users\ahlg...
 DATE TIME: 5/2/2013 2:00:39 PM



ANDREWS ST. PLAN

SCALE: 1/16" = 1'-0"



ANDREWS ST. SOUTH ELEVATION

(NORTH ELEVATION SIMILAR)
SCALE: 1/16" = 1'-0"

CONSTRUCTION LEGEND	
(I)	- FIELD CLEAN & OVERCOAT EXISTING BRIDGE RAILING, ITEM 574.010001
(X)	- STEEL BRIDGE RAILING REPAIRS, ITEM 564.100001

SOUTH RAILING REPAIR TABLE		
KEY:	LOCATION:	DESCRIPTION:
(J)	EAST	REPLACE ALL 3 RAILS PER THE FIXED END DETAIL
(K)	EAST	REPLACE 24" OF TOP RAIL
(L)	EAST	REPLACE ALL 3 RAILS PER THE FIXED END DETAIL AND FULL BOTTOM RAIL (8'-0")
(M)	EAST	REPLACE FULL HEIGHT POST, ALL 3 EXPANSION SLEEVES AND 20" OF BOTTOM RAIL
(N)	EAST	REPLACE TOP AND INTERMEDIATE RAILS PER THE FIXED END DETAIL
(O)	EAST	REPLACE ALL 3 RAILS PER THE FIXED END DETAIL, 26" OF BOTTOM RAIL, AND FULL TOP RAIL (8'-0")
(P)	EAST	REPLACE TOP AND BOTTOM RAILS PER THE FIXED END DETAIL AND 32" OF BOTTOM RAIL
(Q)	EAST	REPLACE ALL 3 RAILS PER THE FIXED END DETAIL, 26" OF BOTTOM RAIL, AND 20" OF TOP RAIL
(R)	EAST	REPLACE TOP AND INTERMEDIATE EXPANSION SLEEVES, 14" OF TOP RAIL, AND 39" OF MIDDLE RAIL
(S)	EAST	REPLACE TOP AND INTERMEDIATE RAILS PER THE FIXED END DETAIL
(T)	EAST	REPLACE LOWER 12" OF RAILING POST, 14" OF INTERMEDIATE RAIL, AND 32" OF BOTTOM RAIL
(U)	EAST	REPLACE ALL 3 RAILS PER THE FIXED END DETAIL
(V)	EAST	REPLACE 20" OF BOTTOM RAIL
(W)	EAST	REPLACE INTERMEDIATE AND BOTTOM RAILS PER THE FIXED END DETAIL
(X)	EAST	REPLACE ALL 3 RAILS PER THE FIXED END DETAIL AND 32" OF BOTTOM RAIL
(Y)	EAST	REPLACE ALL 3 RAILS PER THE FIXED END DETAIL AND 26" OF BOTTOM RAIL

RAILING TABLE NOTE:
ALL DIMENSIONS GIVEN IN ADDITION TO DETAIL CALLOUT SHALL OVERRIDE THE TYPICAL DETAIL DIMENSION FOR REPLACEMENT OF THAT PARTICULAR RAIL SECTION.

NORTH RAILING REPAIR TABLE		
KEY:	LOCATION:	DESCRIPTION:
(A)	EAST	SEAL WELD TOP RAIL
(B)	EAST	REPLACE 26" OF BOTTOM RAIL
(C)	EAST	REPLACE ALL 3 EXPANSION SLEEVES AND 32" OF BOTTOM RAIL
(D)	EAST	REPLACE ALL 3 RAILS PER THE FIXED END DETAIL
(E)	EAST	REPLACE ALL 3 RAILS PER THE FIXED END DETAIL
(F)	EAST	REPLACE ALL 3 EXPANSION SLEEVES
(G)	EAST	REPLACE ALL 3 EXPANSION SLEEVES
(H)	EAST	REPLACE ALL 3 RAILS PER THE FIXED END DETAIL AND 68" OF BOTTOM RAIL
(I)	EAST	REPLACE ALL 3 RAILS PER THE FIXED END DETAIL

RAILING TABLE NOTE:
ALL DIMENSIONS GIVEN IN ADDITION TO DETAIL CALLOUT SHALL OVERRIDE THE TYPICAL DETAIL DIMENSION FOR REPLACEMENT OF THAT PARTICULAR RAIL SECTION.

NOTES:

- FOR THE FOLLOWING SEE:

A. GENERAL NOTES.....	DWG. NO. N-1
B. PAINTING NOTES.....	N-1
C. ANDREWS ST. RAILING DETAILS.....	S-2
D. BASIC WORK ZONE TRAFFIC CONTROL.....	TCP-1
- CONTRACTOR SHALL COORDINATE WITH THE CITY OF ROCHESTER PERMITS OFFICE TO SECURE WORKING AREA WITHIN EXISTING PARKING LANES.
- BRIDGE RAILING PAINT COLOR SHALL BE SW4072 - CEDAR GREEN. THE CONTRACTOR SHALL PROVIDE THE ENGINEER WITH A COLOR SAMPLE FOR APPROVAL PRIOR TO PAINTING.
- CONTRACTOR SHALL PROVIDE ENVIRONMENTAL GROUND AND WATERWAY PROTECTION IN ACCORDANCE WITH NYS DOT SECTION 570. COST TO BE INCLUDED IN UNIT PRICE BID FOR ITEM 574.010001.
- THE CONTRACTOR SHALL MAINTAIN PEDESTRIAN TRAFFIC ON ONE SIDE AT ALL TIMES THROUGH THE CONSTRUCTION SITE. COST TO BE INCLUDED IN ITEM 619.0101.
- REMOVAL OF ALL EXISTING STEEL BRIDGE RAILING COMPONENTS SHALL BE COMPLETED IN ACCORDANCE WITH NYS DOT STANDARD SPECIFICATION SECTION 589. COST TO BE INCLUDED IN THE UNIT BID PRICE FOR ITEM 564.100001.

NO.	REVISION	DATE
1		
2		
3		
4		
5		
6		

LABELLA
Associates, P.C.

300 STATE STREET
ROCHESTER, NY 14614
P: (585) 454-6110
F: (585) 454-3066
www.labello.com

REGISTERED PROFESSIONAL ENGINEER
STATE OF NEW YORK
NO. 10817
EXPIRES 12/31/2013

MAINTENANCE REPAIRS
TO CITY BRIDGES AND
VARIOUS FACILITIES
F.Y. 2013
CITY OF ROCHESTER
DEPARTMENT OF ENVIRONMENTAL SERVICES

ANDREWS STREET
PLAN AND ELEVATION

ISSUED FOR: PS&E
DATE: APRIL 2013

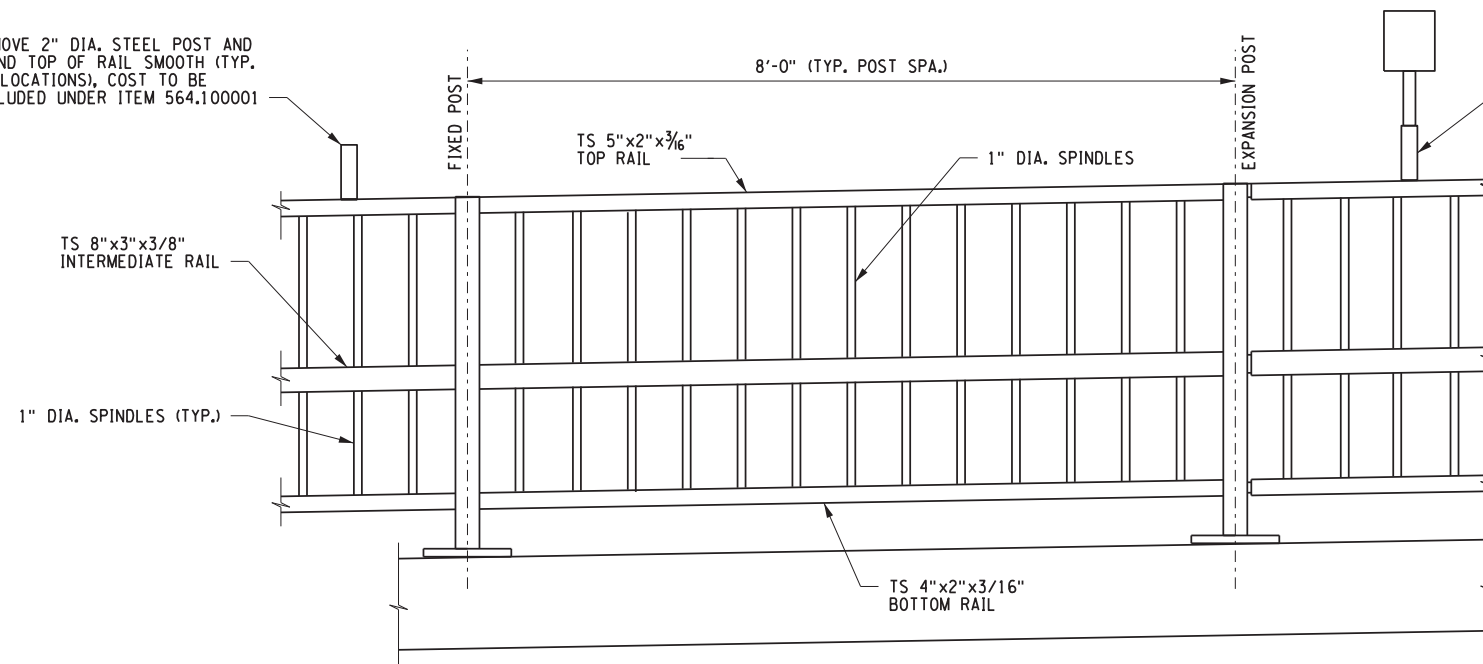
PROJECT/DRAWING NUMBER
212470.01

S-1

SHEET OF 23

PLO/DRAWN: BIV_HighLighting
 CHECKED: J. J. J. J.
 FILE PATH: C:\Users\jbj\Desktop\Drawings\Structural\Andrews Street.dwg
 DATE: TIME: 5/22/2013 1:59:05 PM

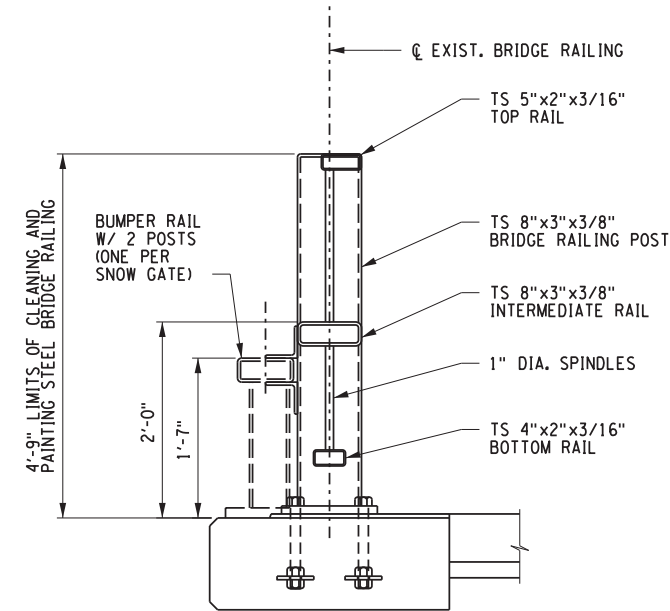
REMOVE 2" DIA. STEEL POST AND GRIND TOP OF RAIL SMOOTH (TYP. 11 LOCATIONS), COST TO BE INCLUDED UNDER ITEM 564.100001



TYPICAL RAILING ELEVATION

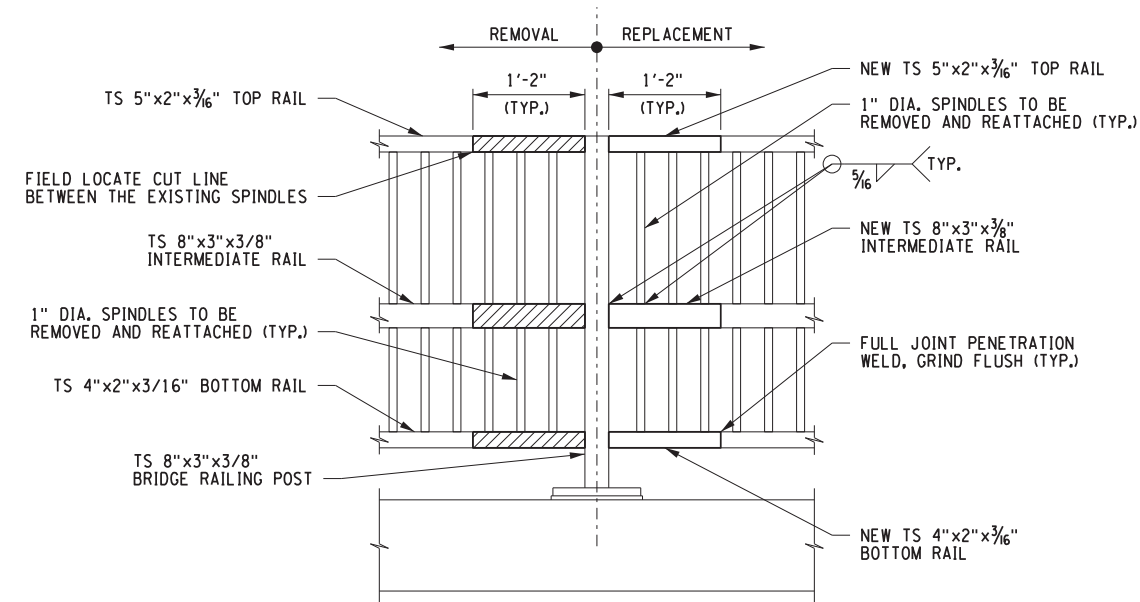
SCALE: 1"=1'-0"

STEEL POSTS WITH PARKING SIGNS SHALL REMAIN AND BE PAINTED. COST TO BE INCLUDED UNDER ITEM 574.010001



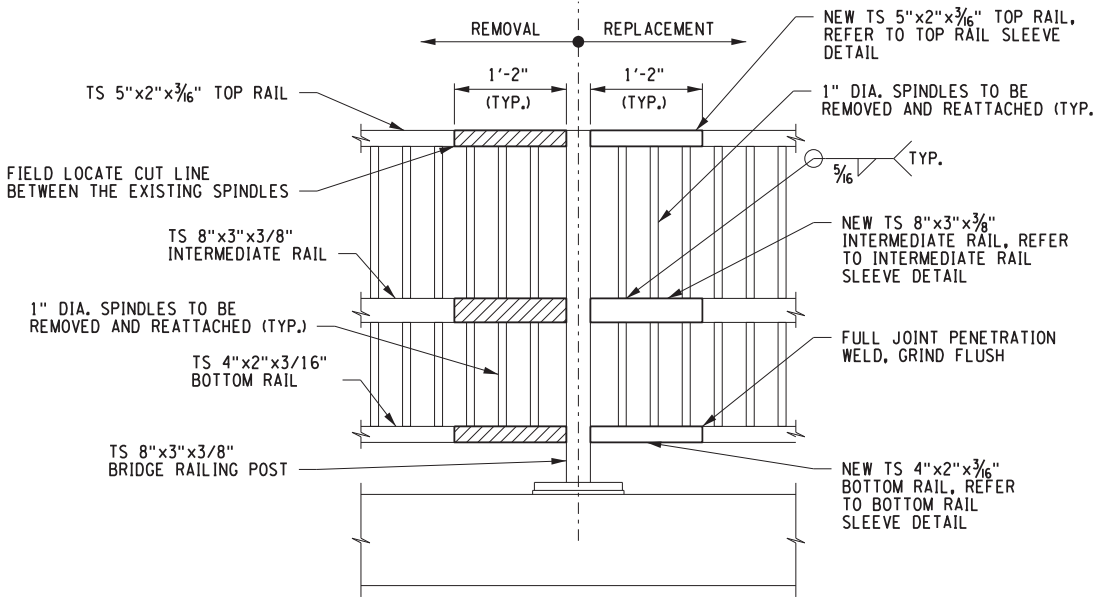
TYPICAL RAILING SECTION

SCALE: 1"=1'-0"



RAILING FIXED END DETAIL

SCALE: 1"=1'-0"



RAILING EXPANSION REPAIR DETAIL

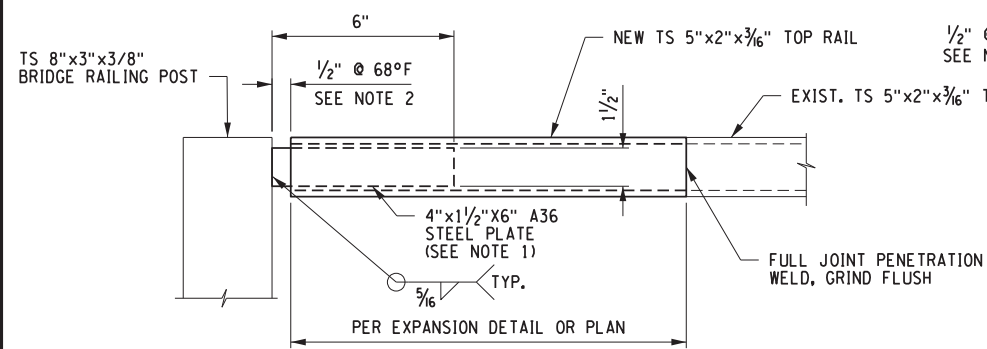
SCALE: 1"=1'-0"

LEGEND:

REMOVAL OF EXISTING STEEL, ITEM 589.520001

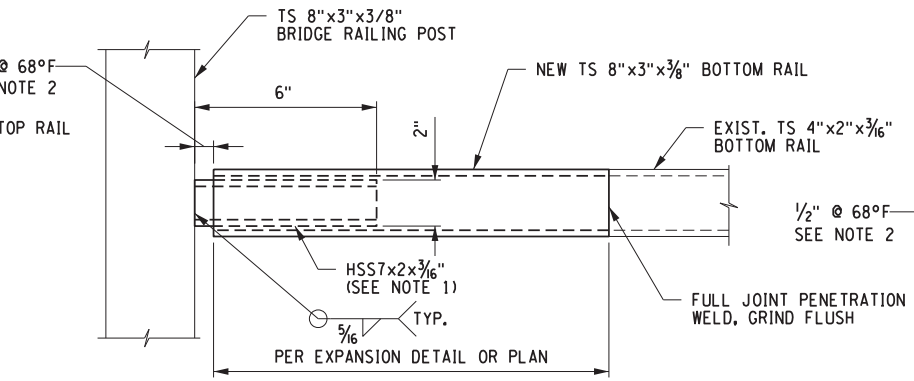
NOTES:

- SLEEVE PLATES SHALL BE PAINTED WITH A NYSDOT APPROVED 3 COAT PAINT SYSTEM PRIOR TO ATTACHMENT TO POST AND TUBE RAIL INSTALLATION.
- CONTRACTOR SHALL ADJUST 1/2" JOINT AT EXPANSION JOINTS BASED UPON AMBIENT TEMPERATURE DURING INSTALLATION.



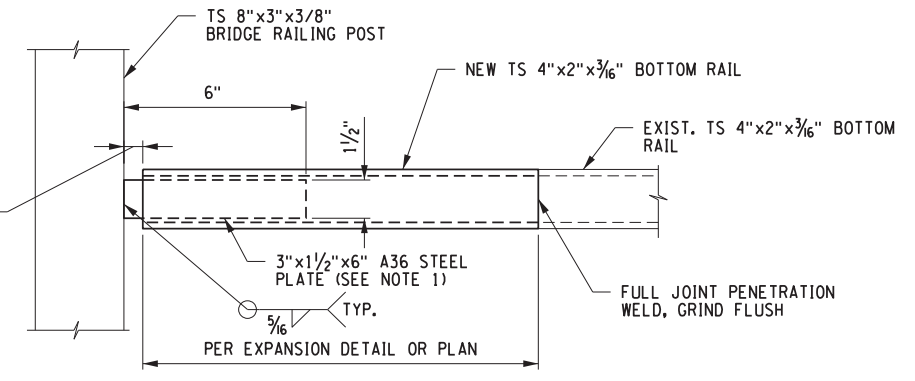
TOP RAIL SLEEVE DETAIL

ITEM 564.100001
NOT TO SCALE



INTERMEDIATE RAIL SLEEVE DETAIL

ITEM 564.100001
NOT TO SCALE

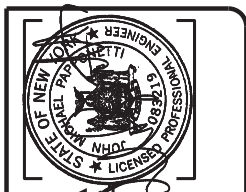


BOTTOM RAIL SLEEVE DETAIL

ITEM 564.100001
NOT TO SCALE

PLOT/DRAWN: B.V. High/ahg
 FILE PATH: C:\Users\ahg\Documents\Drawings\Structural\Drawings\Street Railing.dgn
 DATE: 5/2/2013 1:50:32 PM

NO.	REVISION	DATE
1		
2		
3		
4		
5		
6		



LABELLA
Associates, P.C.
300 STATE STREET
ROCHESTER, NY 14614
P: (585) 454-6110
F: (585) 454-3066
www.labelle.com
05/02/13

PROJECT TITLE:
MAINTENANCE REPAIRS TO CITY BRIDGES AND VARIOUS FACILITIES
F.Y. 2013
CITY OF ROCHESTER
DEPARTMENT OF ENVIRONMENTAL SERVICES

DRAWN BY:
ANDREWS STREET RAILING DETAILS
DESIGNED BY:
DRAWN BY:
REVIEWED BY:
DATE: APRIL 2013
ISSUED FOR:
PS&E

PROJECT/DRAWING NUMBER:
212470.01
S-2
SHEET OF 23