

Maplewood Park Trail Improvements Maplewood Park Playground Improvements Final Design Update

**Hybrid Public Meeting No. 2
(In-Person & Zoom Webinar)
Virgil I. Grissom School No. 7
31 Bryan Street
Wednesday, Dec. 11, 2024 at 6:00 PM**



**City of Rochester, NY
Malik D. Evans, Mayor
Rochester City Council**

City of Rochester
Department of Environmental Services
Bureau of Architecture & Engineering
Landscape Architecture Division
AND
Department of Recreation & Human Services

Introduction

Format of this Meeting – In-Person and Virtual

- **Attendance:**

- In-person attendees please sign in on the Attendance sheet at the room entrance
- Virtual meeting participants please use the “chat” feature to provide your name and email

- **Questions:** Virtual meeting participant will be muted during the presentation. At the end of the presentation:

- Q&A to answer question from attendees. Online attendees are asked to provide questions through Zoom webinar chat function.
- In-person attendees will be able to visit stations in the room to view project display boards, ask questions, and continue the discussion with the project team members.
- Links to the project web pages have been copied and pasted into the meeting chat to view the presentation and display boards virtually. Additional feedback can be submitted directly to the Project Manager(s).

- **Audio/Video Recording:** This presentation will be recorded. All attendees consent to the audio and video recording of this meeting for project documentation purposes.

Tonight's Presentation

- **Overall Project Orientation**
- **Maplewood Nature Center**
- **Maplewood Trail Improvements**
- **Maplewood Park Playground Improvements**
- **Project Timelines**
- **More Information & Continued Discussion**

Overall Project Orientation



City of Rochester, NY
Malik D. Evans, Mayor
Rochester City Council



Maplewood Nature Center



City of Rochester, NY
Malik D. Evans, Mayor
Rochester City Council



Location Map



**CONSTRUCTION
STARTED**

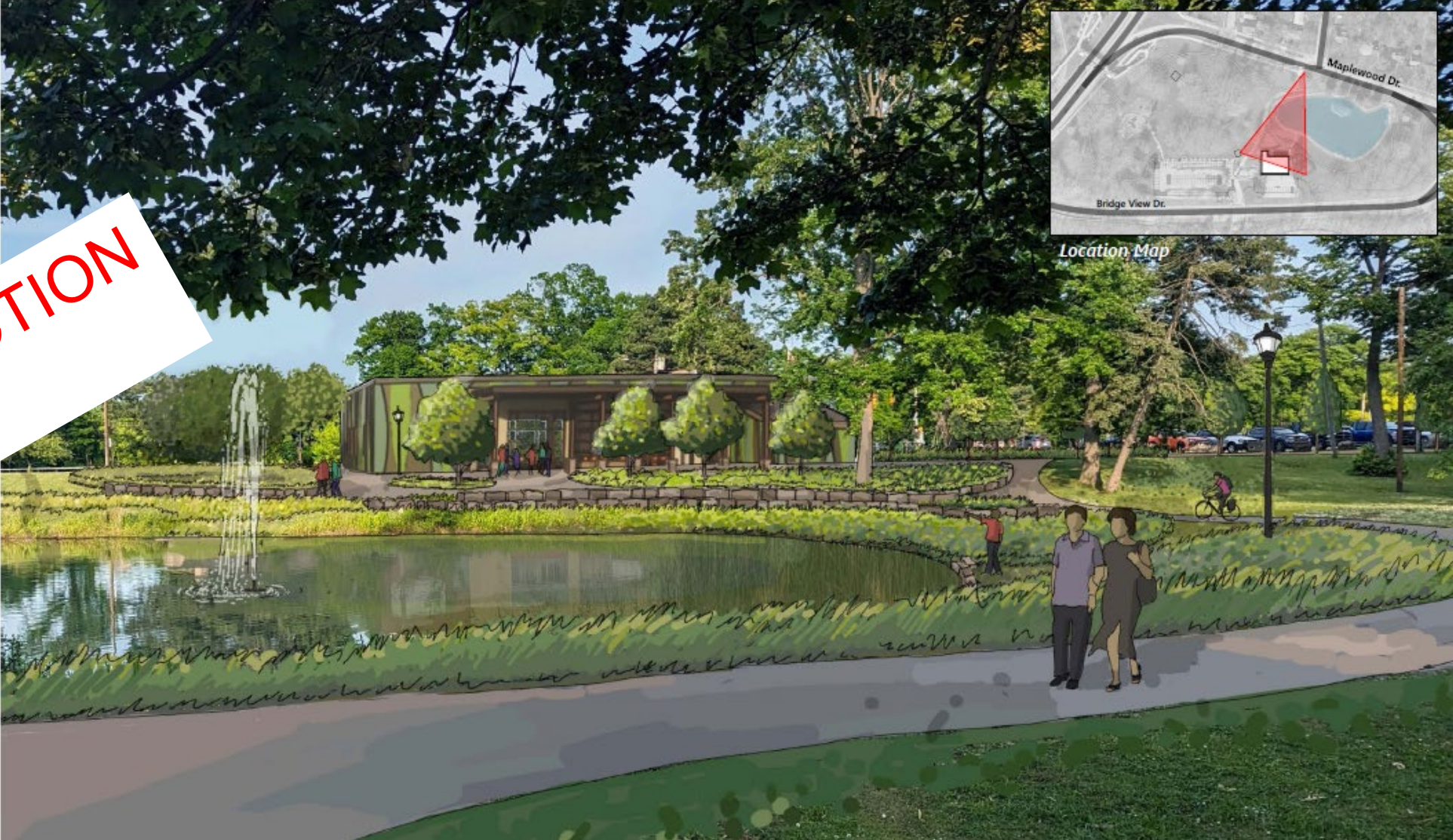
**SUMMER 2026
COMPLETION**

Maplewood Nature Center



City of Rochester, NY
Malik D. Evans, Mayor
Rochester City Council

**CONSTRUCTION
STARTED**



**SUMMER 2026
COMPLETION**

Maplewood Trail Improvements

You spoke and we listened: ADA Bypass Alternate 2

- Maplewood Block Club: “We feel this alternative is more practical.”
- Comment card: “Alt. 2 (is) much better, less tree removal, straight path better for cyclist(s)”
- Comment card: “Trail – prefer the straight section to the switchback to preserve trees and limit disruptive grading”
- Comment card: “Prefer Alternative without switchbacks for trail”
- Comment card: “path extension option...is better to be more direct and preserves more trees than the switchback option”

Maplewood Trail Improvements

You spoke and we listened: Trail Use

- Comment card: “discourage ATVs”
- Comment card: “eliminate vehicle (very noisy and unsafe) traffic on trail”
- Comment card: “impede/discourage ATVs”
- In-person: “concern for ATV and dirt bike use”
- In-person: “gates, speed humps, bollards...to deter ATV traffic?”
- Letter: “nothing in these plans to ameliorate the use of the trail by ATVs and dirt bikes.”

Maplewood Trail Improvements

Design elements incorporated:

- ADA Bypass Alternate 2**
- Bollards/Chicane at each entrance to trail**
- Trail signage (GRT)**
- Vegetation management**

Maplewood Trail Improvements

Frequently Asked Questions (with answers):

Q: Can you install lighting on the trail?

A: Not within budget. Trail typically not lighted unless in highly developed area.

Q: Fencing options: chain link or something better looking?

A: Black vinyl-coated chain link will be base bid with ornamental aluminum picket as bid alternative. If bids come in favorably additional length can be installed as budget allows.

Q: Are you removing the existing stairs?

A: No, the stairs will remain

Maplewood Trail Improvements

Frequently Asked Questions (with answers):

Q: Can you clean up the trail under Driving Park Ave bridge?

A: Yes, we've added vegetation management to our scope and intend to repave trail link to Hastings Street / Lower Falls Park.

Q: Can you add flashing lights at crosswalks?

A: This is not included in our budget. We will share desire with Street Design for future street projects.

Q: Will the City be installing trash cans?

A: Trash receptacles will be added to the project at trailheads

Maplewood Trail Improvements



City of Rochester, NY
Malik D. Evans, Mayor
Rochester City Council





**Mayor
Malik Evans**

Department of Environmental Services

Commissioner

Kabutey Ocansey

City Engineer

Holly Barrett, PE

Project Team

City

Tyler Burke, PE, CPESC

Jeffery Mroczek, PLA

Barton and Loguidice

(Design Consultant)

Nicole Cleary, ASLA, PLA

Ashlyn Maurer, PE

01 Project Limits



LEGEND

- Genesee Riverway Trail - **Project Limits**
- Genesee Riverway Trail



Maplewood Park

Lake Avenue

Lower Falls

SOUTH TRAIL
(Path Extension Trail Section)

MIDDLE TRAIL
(Existing Unpaved Trail Section)

Genesee River

Maplewood Drive

Bridge View Drive

NORTH TRAIL
(Veterans Bridge Diverter)

Maplewood Nature Center & Playground Project

Drawing Park Avenue

Maplewood Avenue

Rose Street

Seneca Parkway

Park View Street

Riverside Street

Corlaine Street

Flower City Park

Parkgate Terrace

Lapham Street

Redwood Drive

NYS Route 104
Keeler Street Expressway

Inaccessible pathway

The trail provides access to a Lower Falls Park, however is inaccessible with a long staircase. There is an opportunity to reconfigure the pathway to provide access throughout the trail to those at any age, and any abilities.



02 Existing Conditions - South Trail



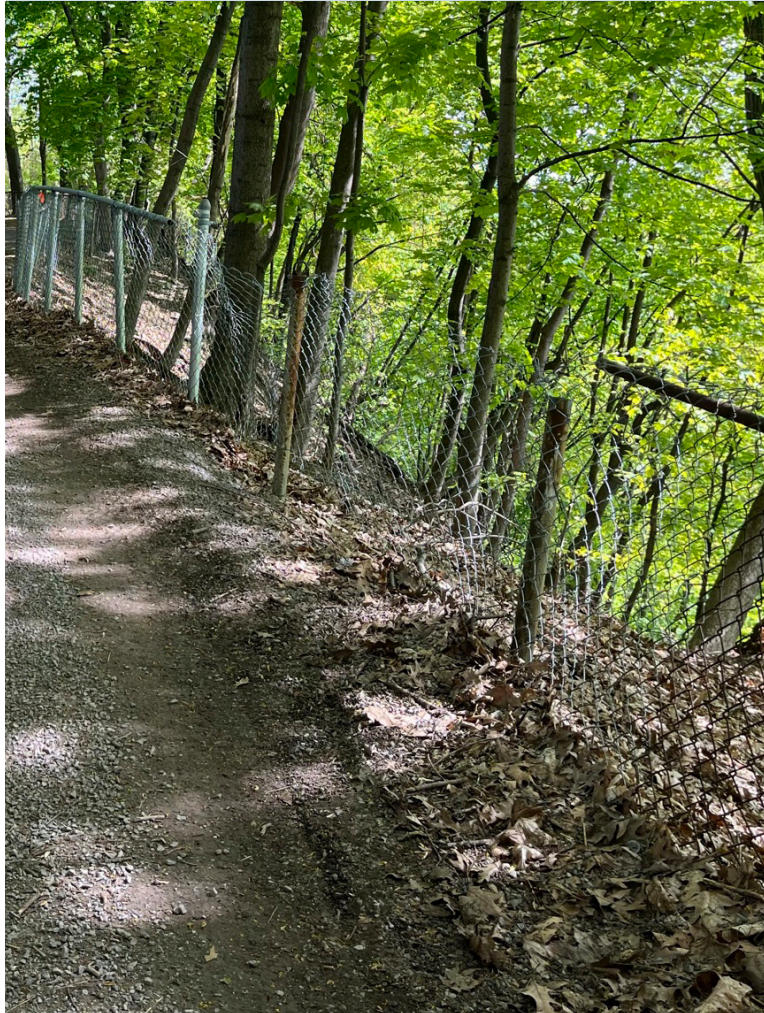
Uneven/Undefined Trail Surface

The existing trail is stone dust and shows signs of erosion, is uneven, and undefined in many sections. Not compliant with national accessibility or trail design standards.



Unstable Chain Link Fence

The existing chain link fence has deteriorated in some sections to where it is no longer effective or safe. Some sections are compromised due to erosion of the gorge edge.



Deteriorated Wayfinding Signage

The wayfinding signage along the Genesee Riverway Trail within this section is worn, and difficult to read.



02 Existing Conditions - North Trail



Accessible pathway

There is an opportunity to remove the existing stairs and provide a new designed accessible pathway to bring trail users to Lower Falls Park. Options include a switchback trail or a path extension.



03 Needs & Opportunities - Middle Trail

Resurface Trail

There is an opportunity to implement a revitalized section of trail which is 8'-10' wide and an asphalt material.



Relocating or Replacing Fence

It is recommended to relocate or replace the fence along sections of the trail.



Enhanced Wayfinding Signage

There is an opportunity to upgrade the existing wayfinding signage along this section of trail to match the existing Genesee Riverway Trail signage theme.



03 Needs & Opportunities - North Trail

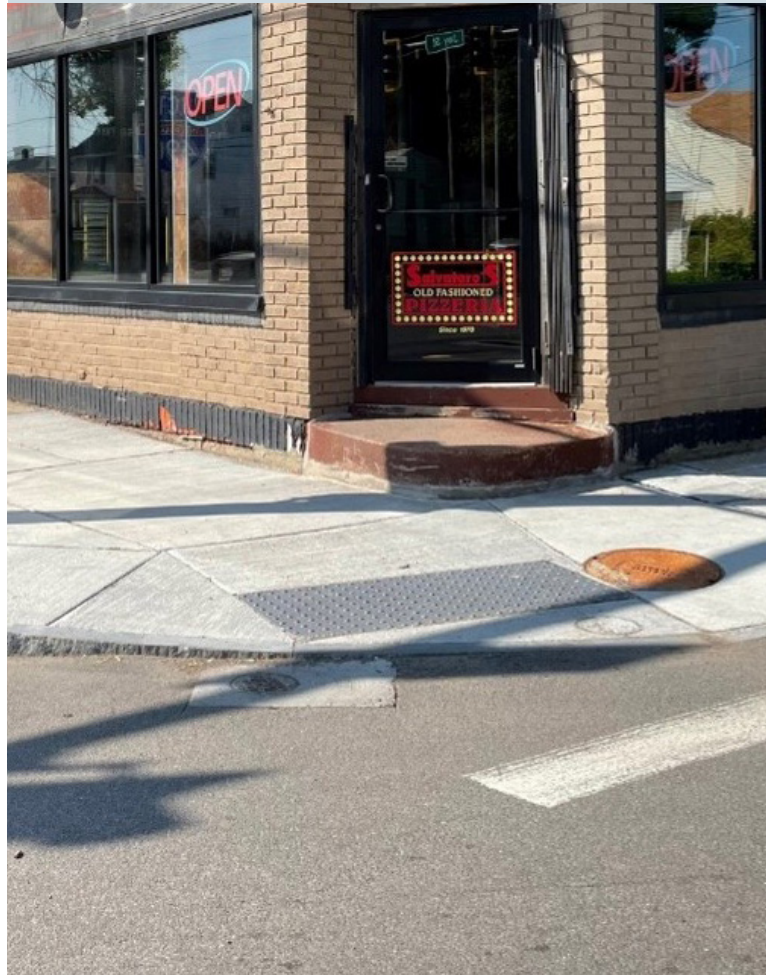
Existing Sidewalks

Existing sidewalks are in good condition and will be retained as is throughout this segment.



Replace Sidewalk Curb Ramps

It is recommended to modify, or replaced sidewalk curb ramps and install detectable warning units where needed to address accessibility requirements.



Upgrade Crosswalks

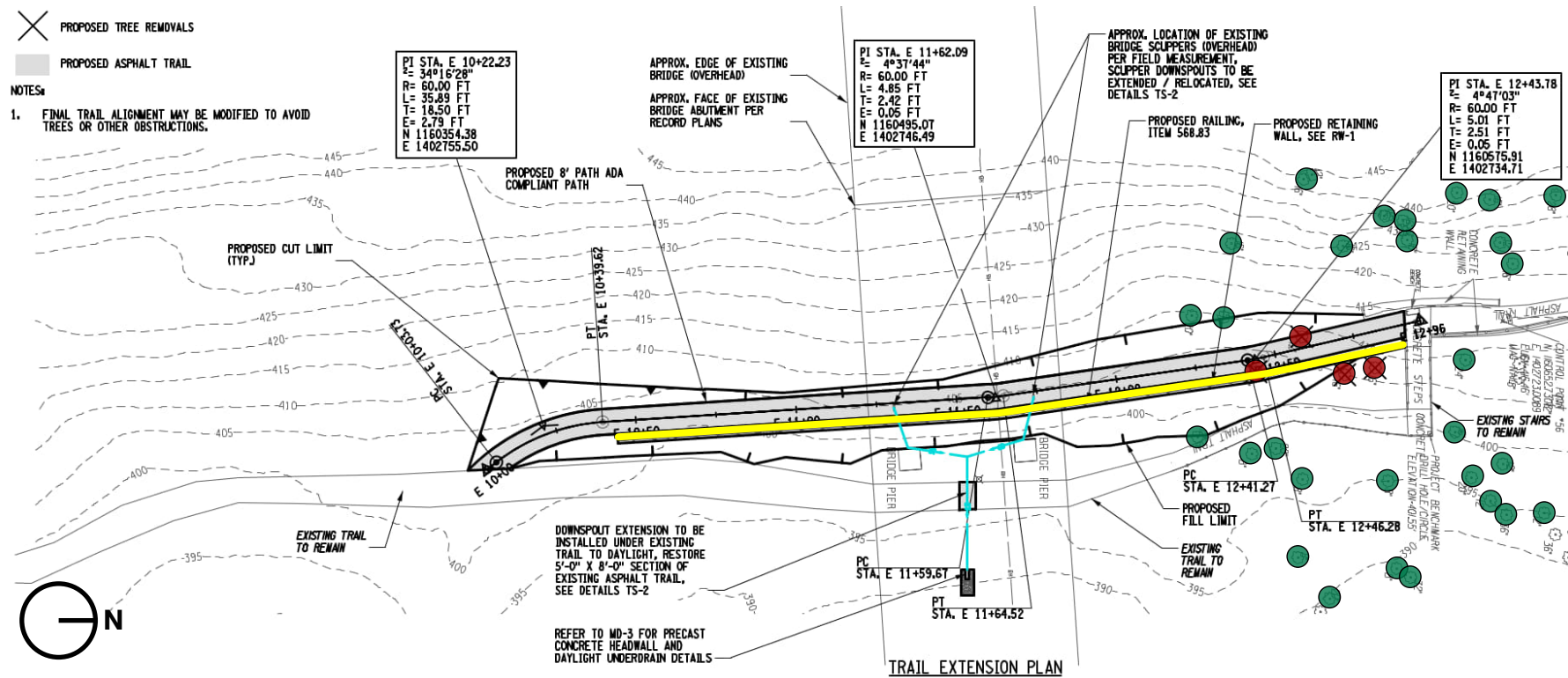
There is an opportunity to Install high visibility crosswalks and replace pavement markings throughout the project limits to meet current Manual on Uniform Traffic Control Devices (MUTCD) standards, as needed.



Path Extension

Proposed improvements include:

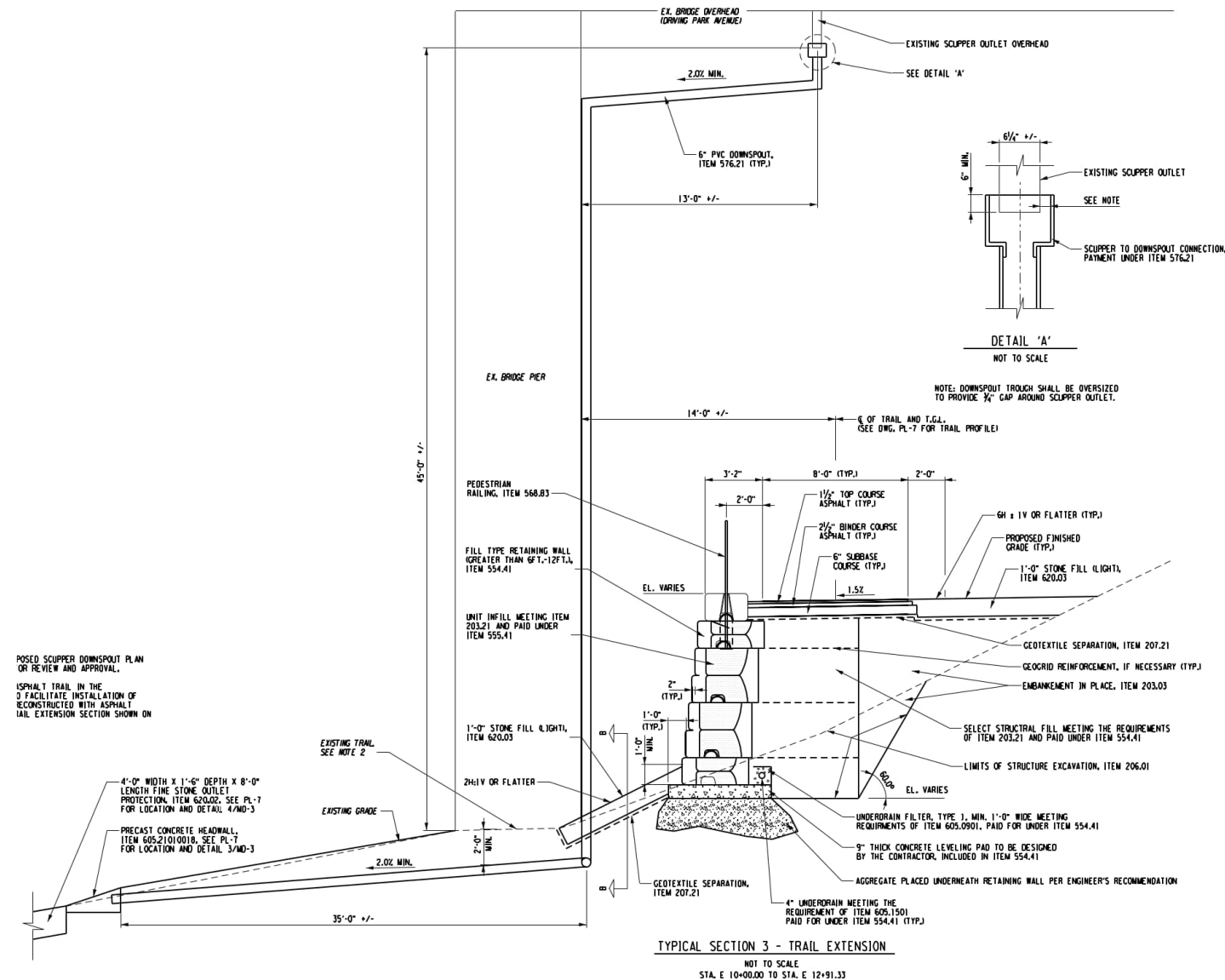
- Universally accessible trail
- Maintaining existing stairs
- New 8' ADA compliant path
- New metal railing with handrail
- One (1) new long retaining wall
- Four (4) tree removals
 - » 1 - 6"-12" caliper trees
 - » 3 - 18"-24" caliper trees



04 Final Design - South Trail - Typical Section

Path Extension

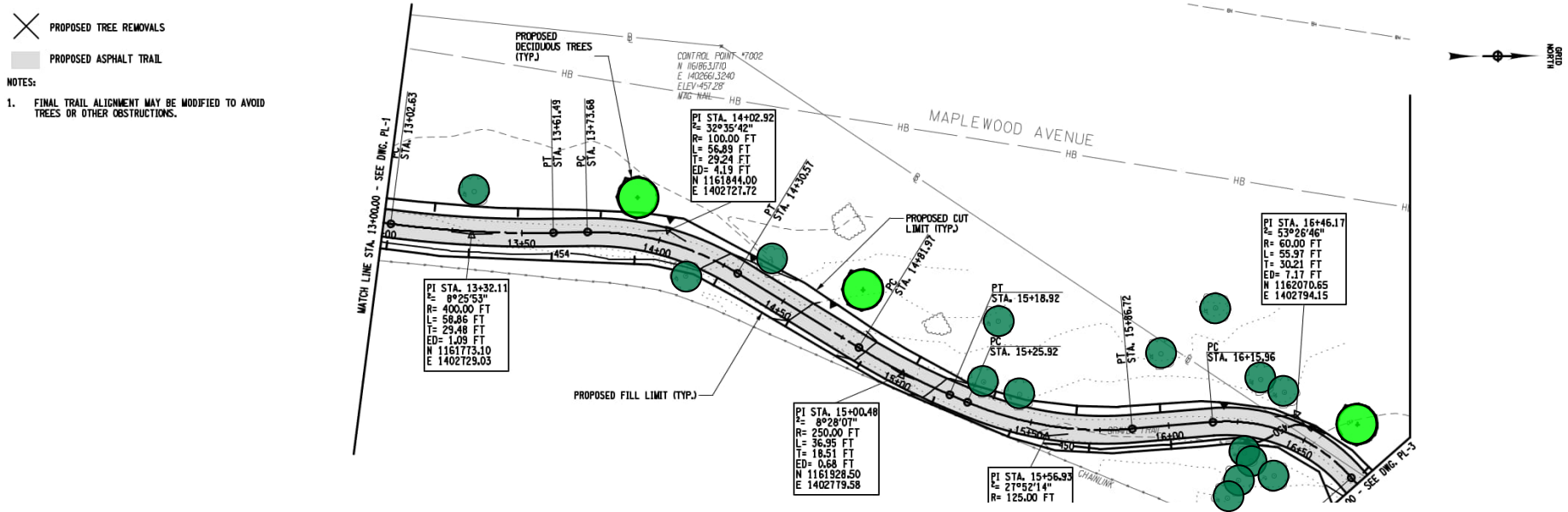
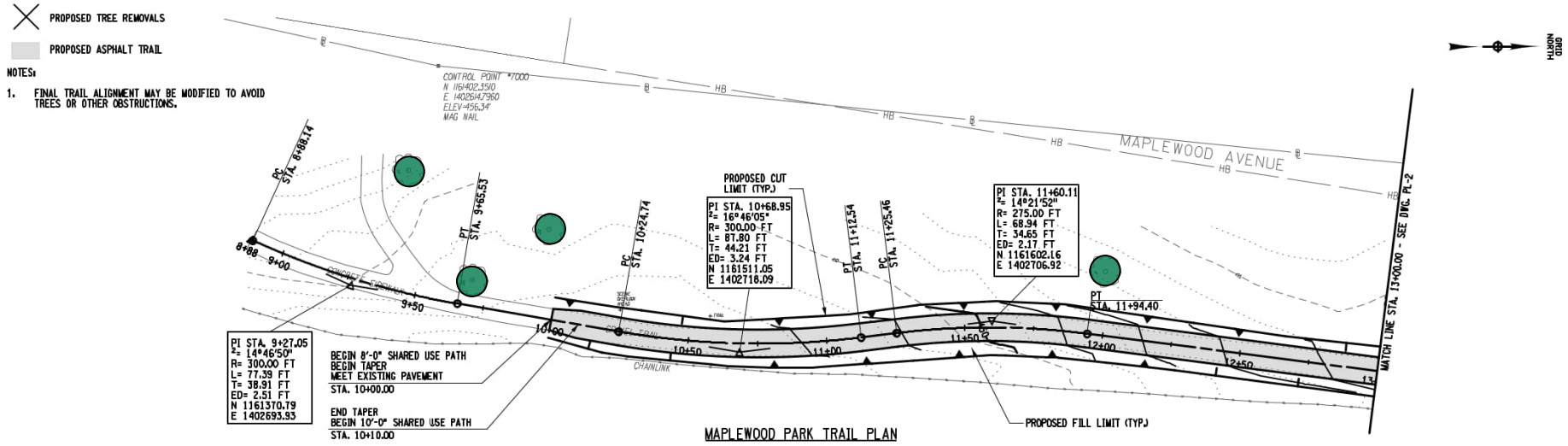
- Driving Park Ave Bridge downspout scupper relocation
- Stepped fill type retaining wall
- Pedestrian railing along top of retaining wall



Paved Trail

Proposed improvements include:

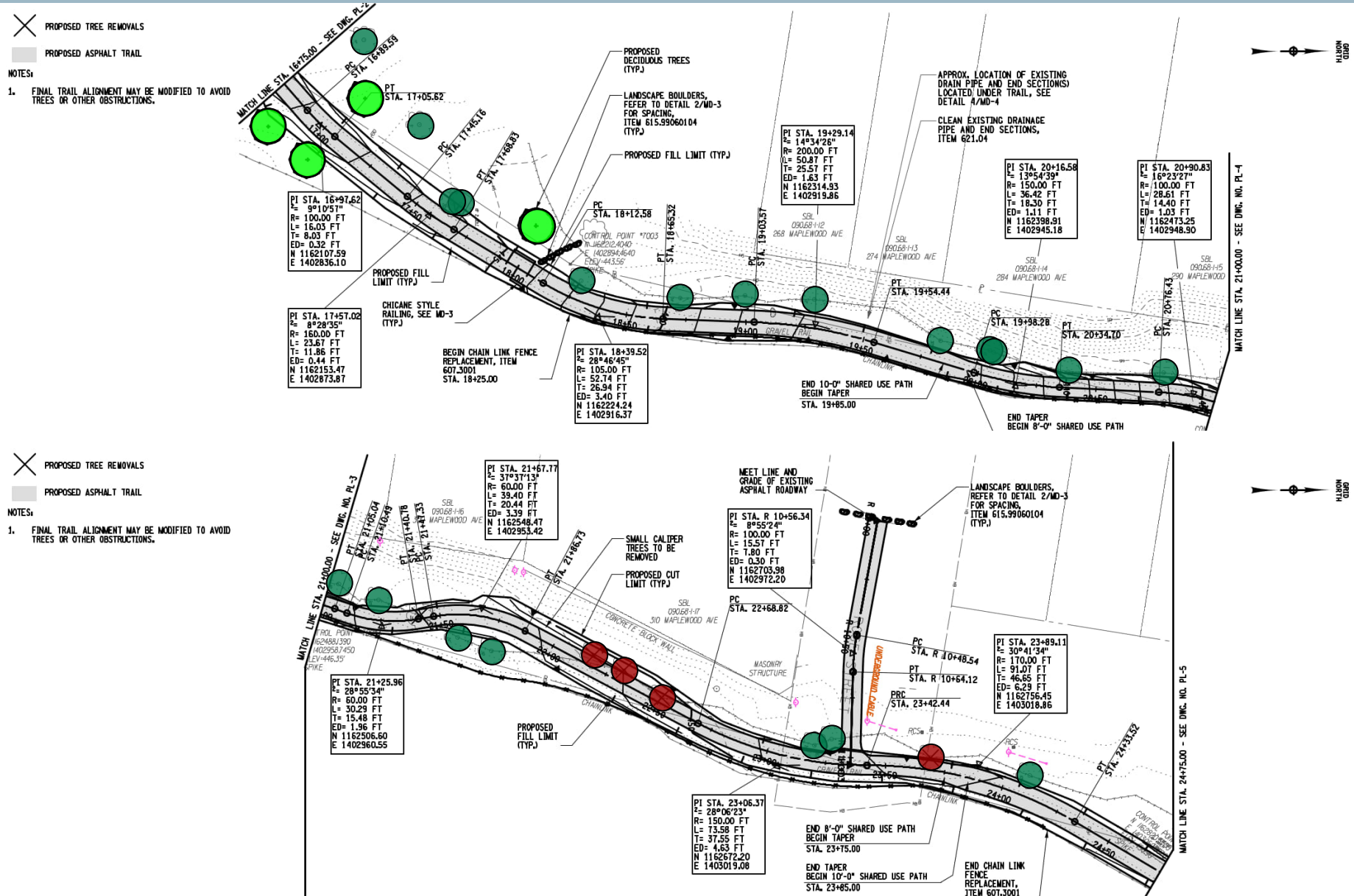
- Universally accessible trail
- Realignment of trail
- Resurfaced trail with asphalt.
- Varying trail widths from 8' to 10' wide
- Nine (9) new trees
- Four (4) total tree removals
 - » 1 - 6"-12" caliper tree
 - » 2 - 12"-18" caliper trees
 - » 1 - 18"-24" caliper trees
- Replace the existing chain link fence where it is no longer functioning, or relocate the existing chain link fence in necessary sections
- Stabilized gorge edge



Paved Trail

Proposed improvements include:

- Universally accessible trail
- Realignment of trail
- Resurfaced trail with asphalt.
- Varying trail widths from 8' to 10' wide
- Nine (9) new trees
- Four (4) total tree removals
 - » 1 - 6"-12" caliper tree
 - » 2 - 12"-18" caliper trees
 - » 1 - 18"-24" caliper trees
- Replace the existing chain link fence where it is no longer functioning, or relocate the existing chain link fence in necessary sections
- Stabilized gorge edge



Paved Trail

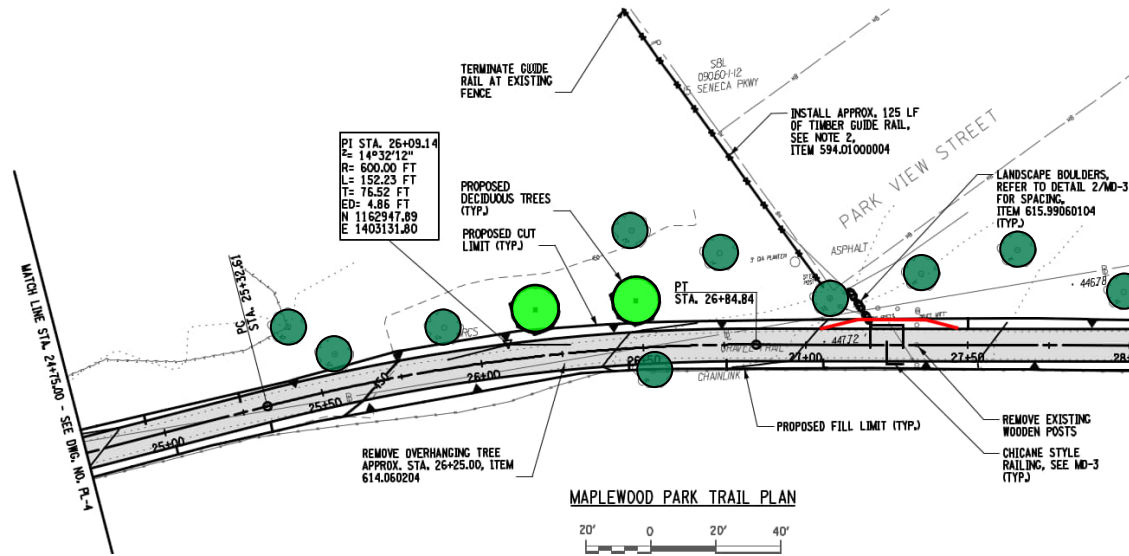
Proposed improvements include:

- Universally accessible trail
- Realignment of trail
- Resurfaced trail with asphalt.
- Varying trail widths from 8' to 10' wide
- Nine (9) new trees
- Four (4) total tree removals
 - » 1 - 6"-12" caliper tree
 - » 2 - 12"-18" caliper trees
 - » 1 - 18"-24" caliper trees
- Replace the existing chain link fence where it is no longer functioning, or relocate the existing chain link fence in necessary sections
- Stabilized gorge edge

- ✕ PROPOSED TREE REMOVALS
- PROPOSED ASPHALT TRAIL

NOTES:

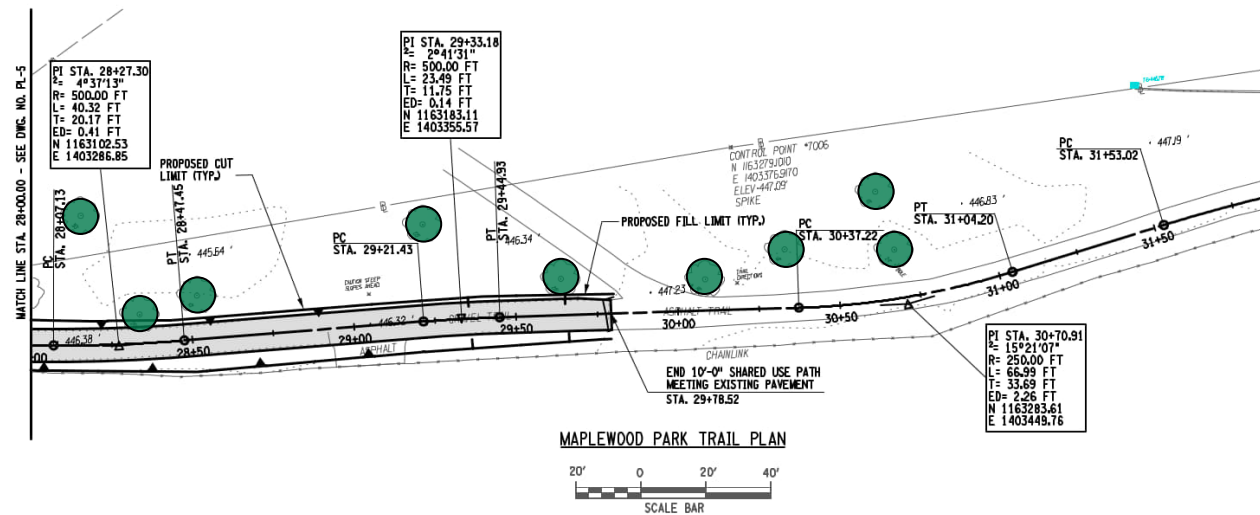
1. FINAL TRAIL ALIGNMENT MAY BE MODIFIED TO AVOID TREES OR OTHER OBSTRUCTIONS.
2. CONTRACTOR TO CONFIRM LENGTH OF TIMBER GUIDE RAIL IN THE FIELD PRIOR TO CONSTRUCTION.



- ✕ PROPOSED TREE REMOVALS
- PROPOSED ASPHALT TRAIL

NOTES:

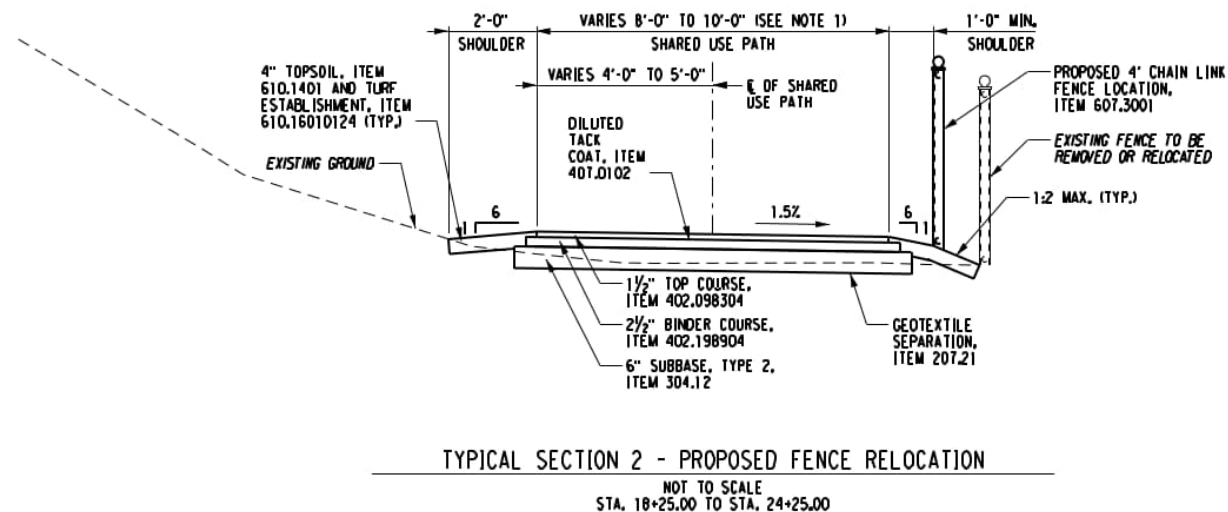
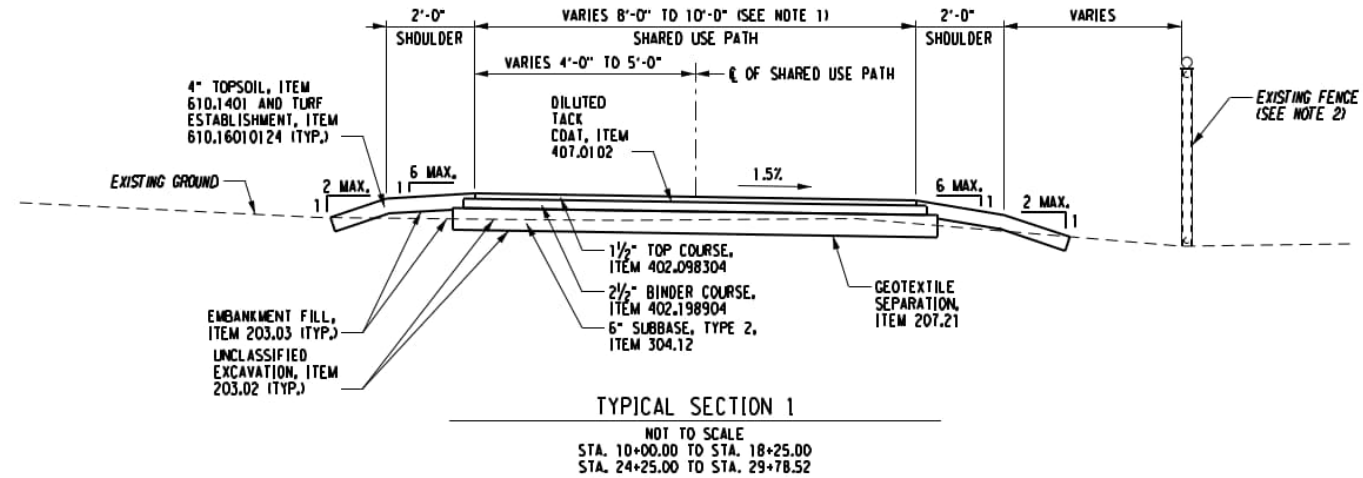
1. FINAL TRAIL ALIGNMENT MAY BE MODIFIED TO AVOID TREES OR OTHER OBSTRUCTIONS.



Paved Trail

Proposed improvements include:

- Universally accessible trail
- Realignment of trail
- Resurfaced trail with asphalt.
- Varying trail widths from 8' to 10' wide
- Nine (9) new trees
- Four (4) total tree removals
 - » 1 - 6"-12" caliper tree
 - » 2 - 12"-18" caliper trees
 - » 1 - 18"-24" caliper trees
- Replace the existing chain link fence where it is no longer functioning, or relocate the existing chain link fence in necessary sections
- Stabilized gorge edge



04 Final Design - Middle Trail Access Control

Paved Trail Access Control

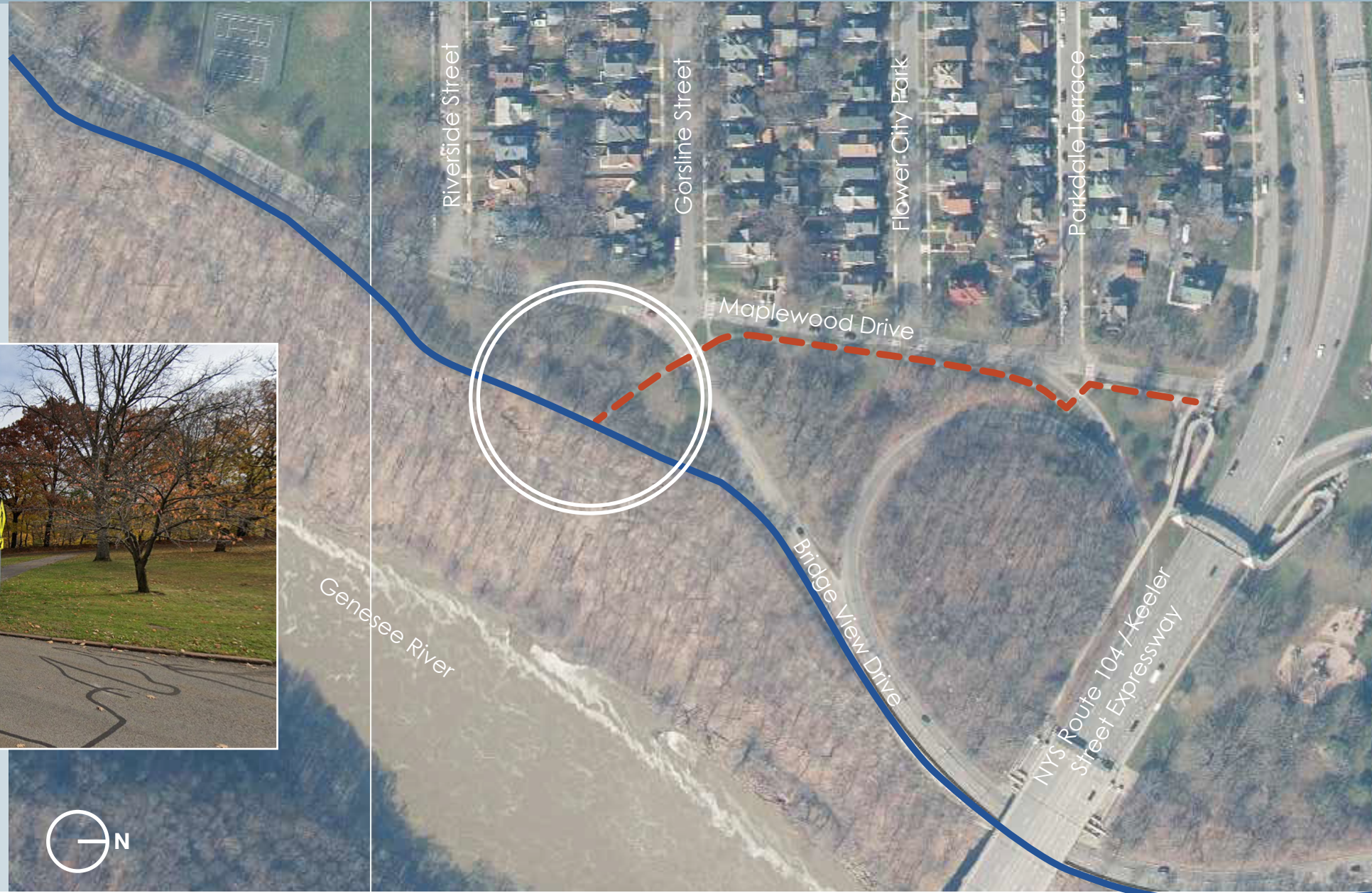
- Limit ATV Use
- Allow maintenance and emergency vehicle access
- Bollards



04 Final Design - Proposed Improvements: North Trail

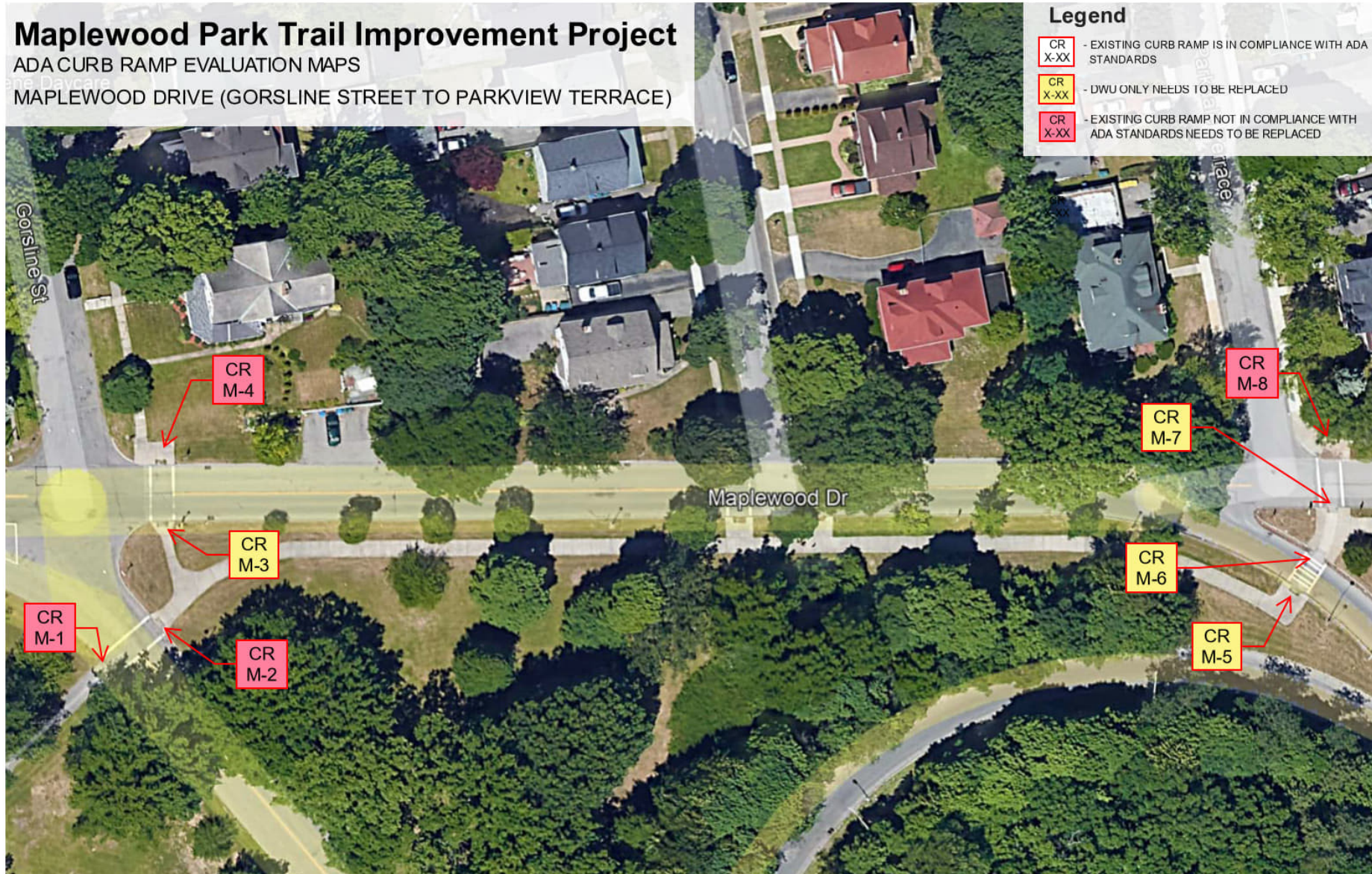
Potential Improvements

- Path resurfacing
- Path realignment



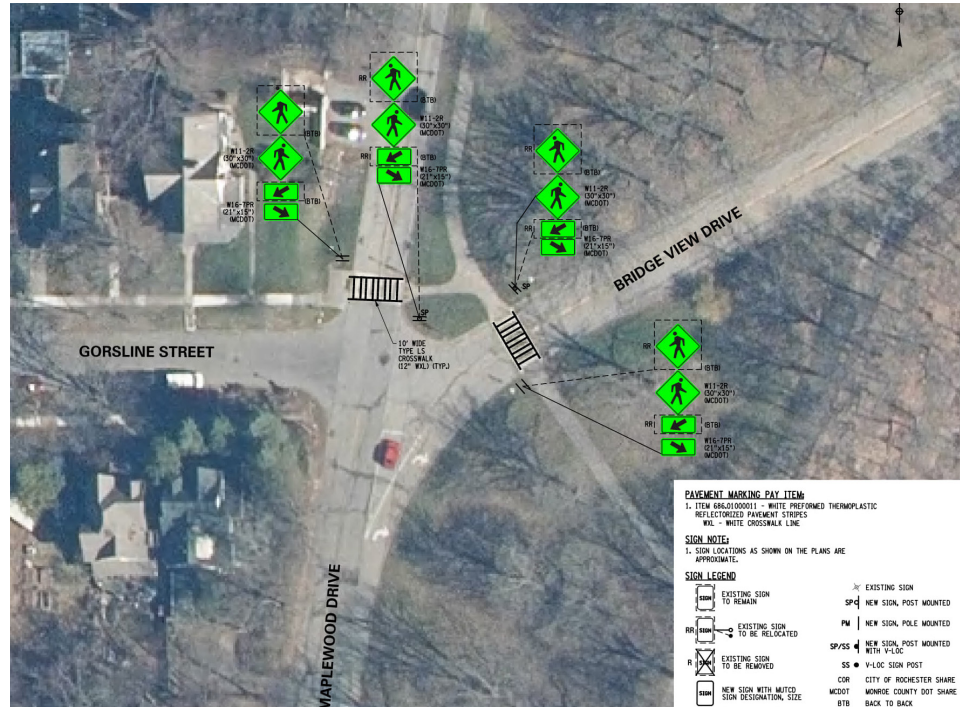
Curb Ramp Replacement

- 8 Inventoried
- 4 in need of detectable warning units
- 4 in need of upgraded curb ramp with detectable warning units



Signage Upgrades

- 9 existing signs to remain
- 2 existing signs to be removed
- 20 new signs



Sign Types



City of Rochester, NY
Malik D. Evans, Mayor
Rochester City Council



A1 MAJOR KIOSK



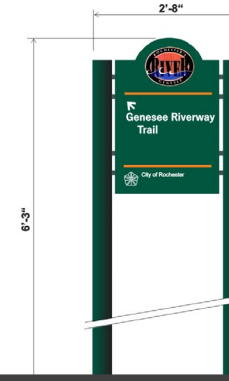
B1 MINOR KIOSK



OLMSTED KIOSK



D1 MAJOR DIRECTIONAL



D2 MINOR DIRECTIONAL



E2 HAZARD / WARNING



F3 DIRECTIONAL MARKER



F5 SIDEWALK LOGO

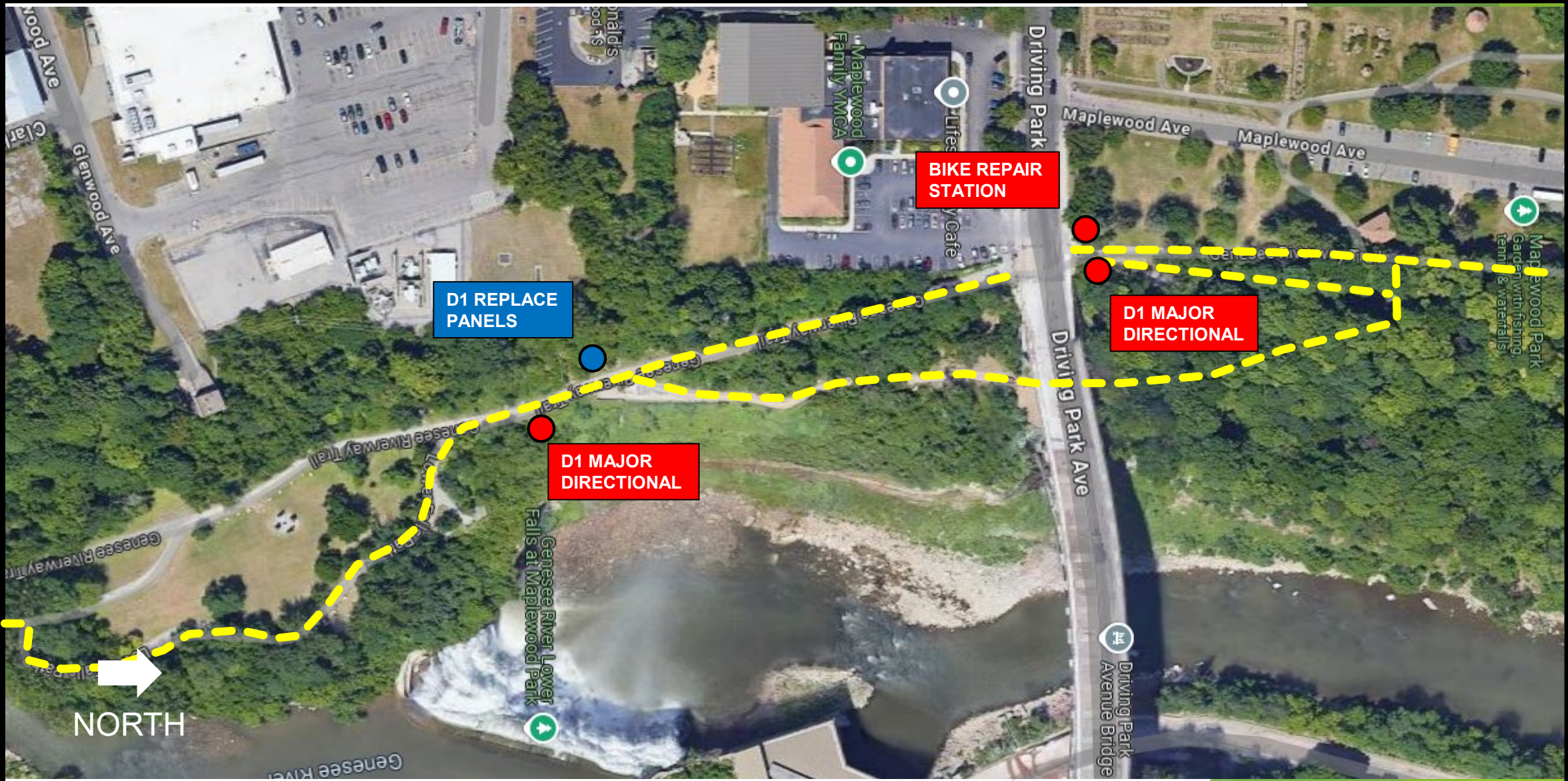
BIKE REPAIR STATION



Sign Plan 1 of 6



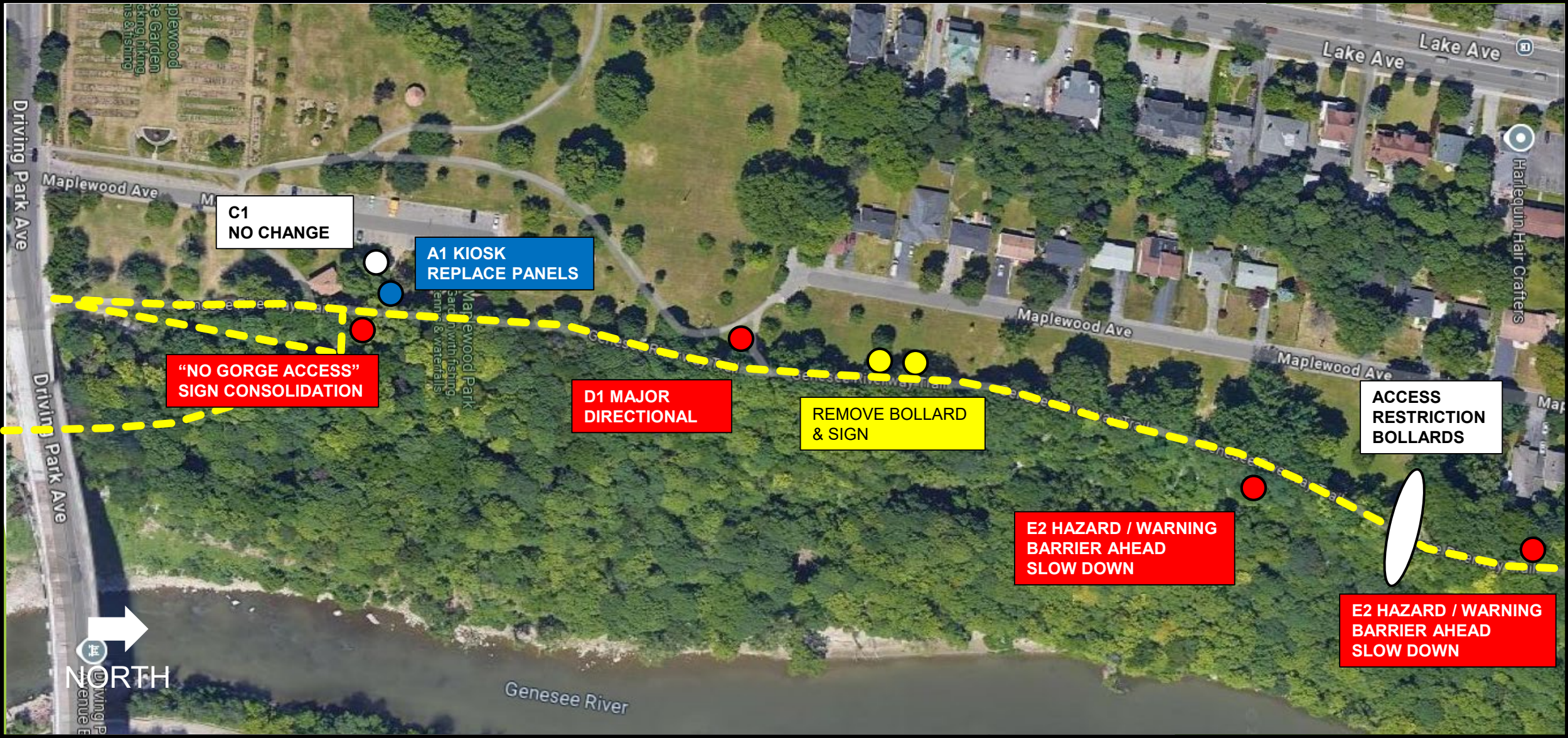
City of Rochester, NY
Malik D. Evans, Mayor
Rochester City Council



Sign Plan 2 of 6



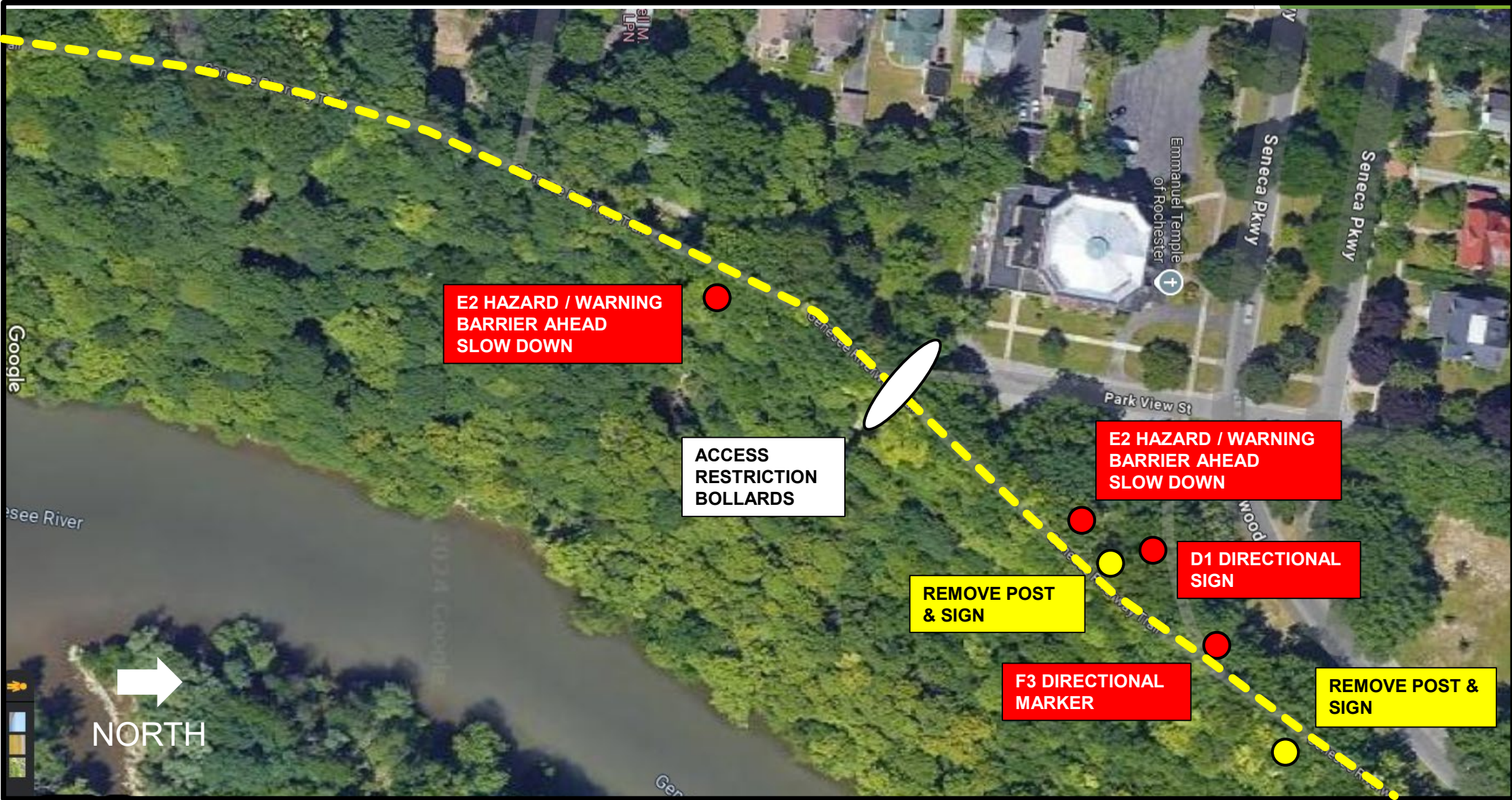
City of Rochester, NY
Malik D. Evans, Mayor
Rochester City Council



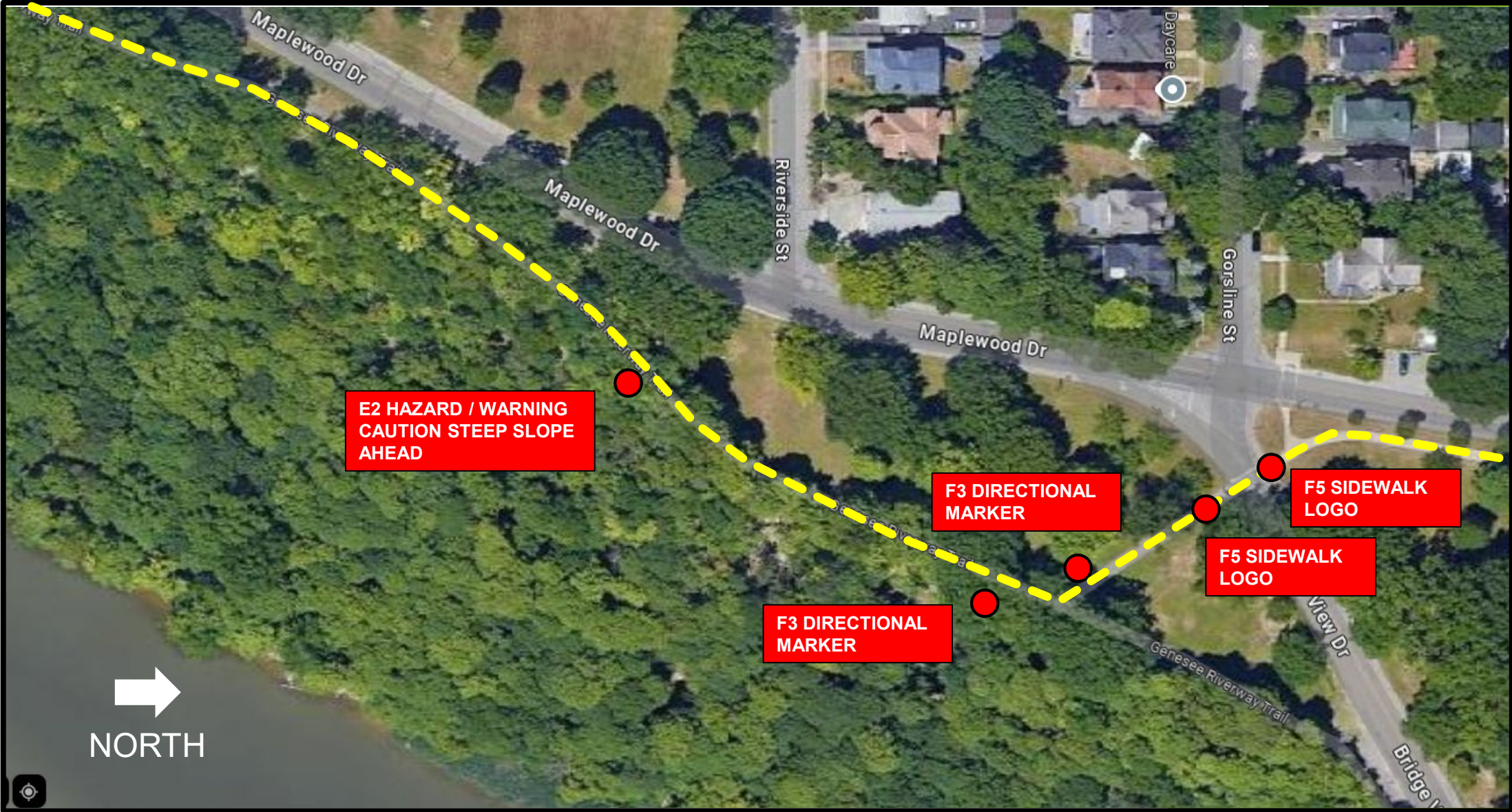
Sign Plan 3 of 6



City of Rochester, NY
Malik D. Evans, Mayor
Rochester City Council



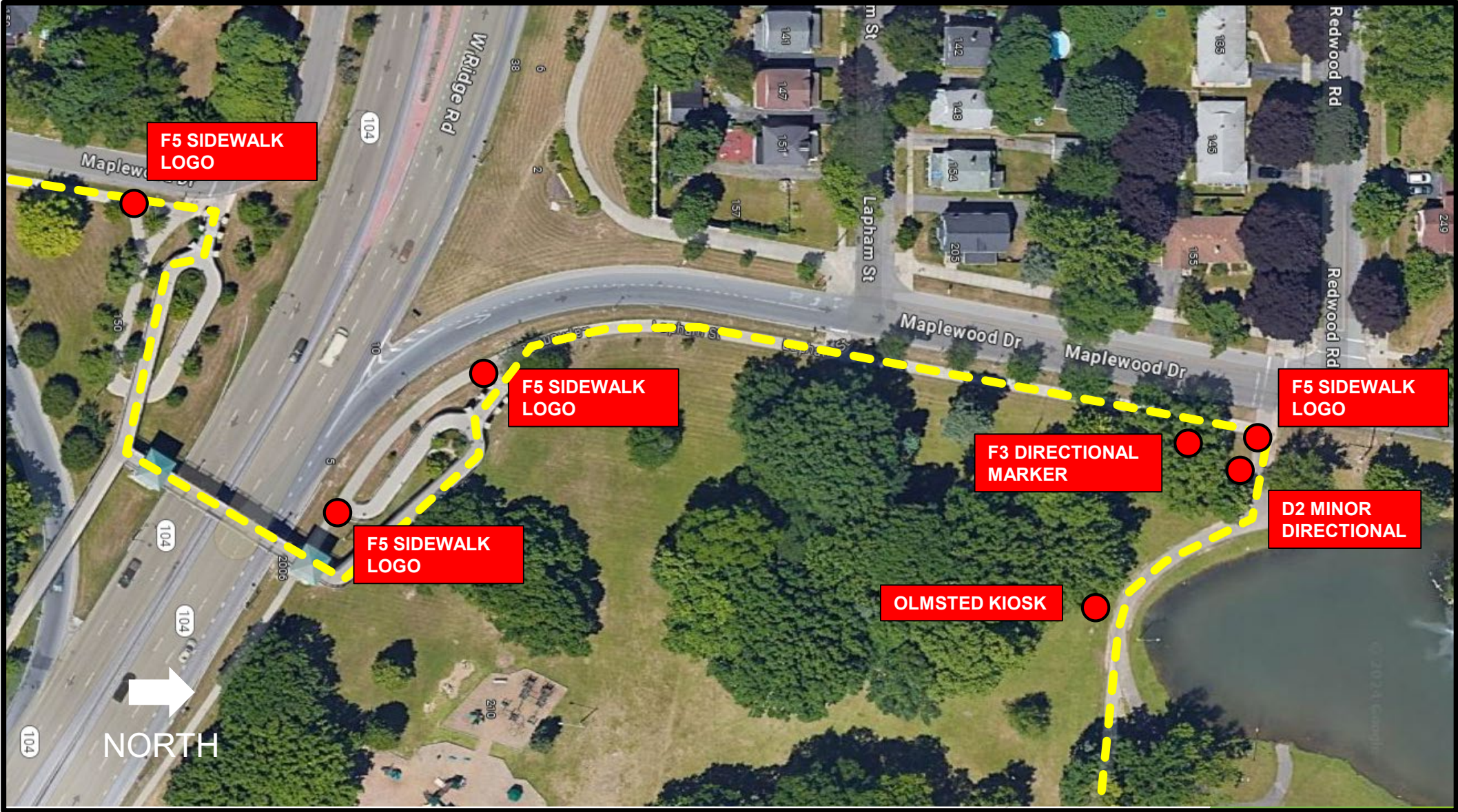
Sign Plan 4 of 6



Sign Plan 5 of 6



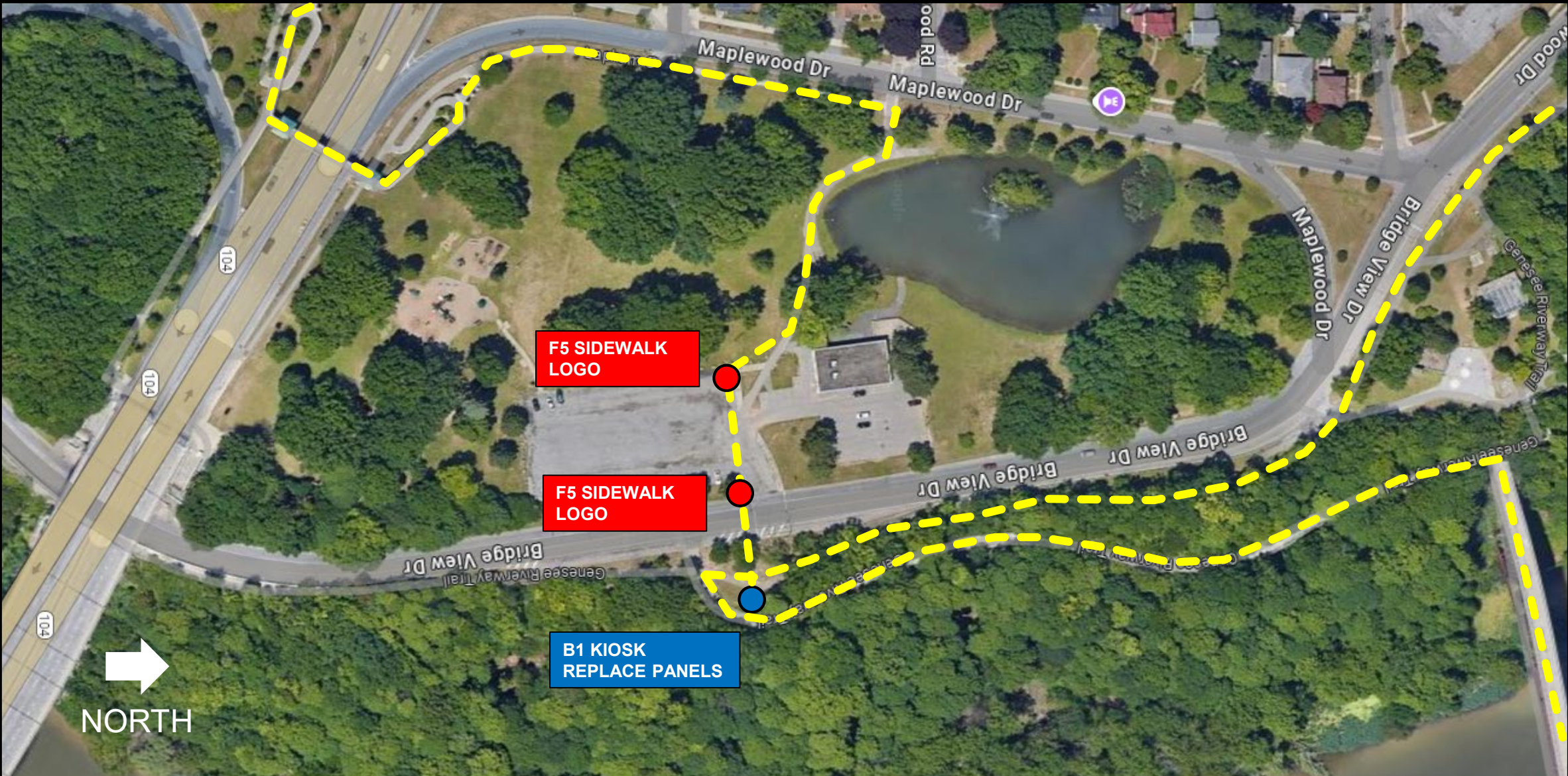
City of Rochester, NY
Malik D. Evans, Mayor
Rochester City Council



Sign Plan 6 of 6



City of Rochester, NY
Malik D. Evans, Mayor
Rochester City Council



Overall Project Orientation



City of Rochester, NY
Malik D. Evans, Mayor
Rochester City Council





Maplewood Nature Center Plan

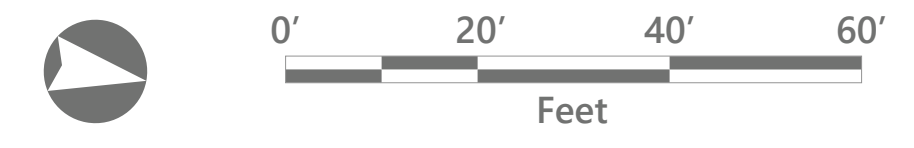
Maplewood Park Playground

Public Meeting #1 (July 11, 2024) Comments:

- Durability / longevity of wood play structures (vandalism, flammability)
- Durability of play surfacing
- Water spray park
- Accessible swing
- Water fountain on site
- Refuse collection / litter
- Security risk / enhanced police presence



Context Plan

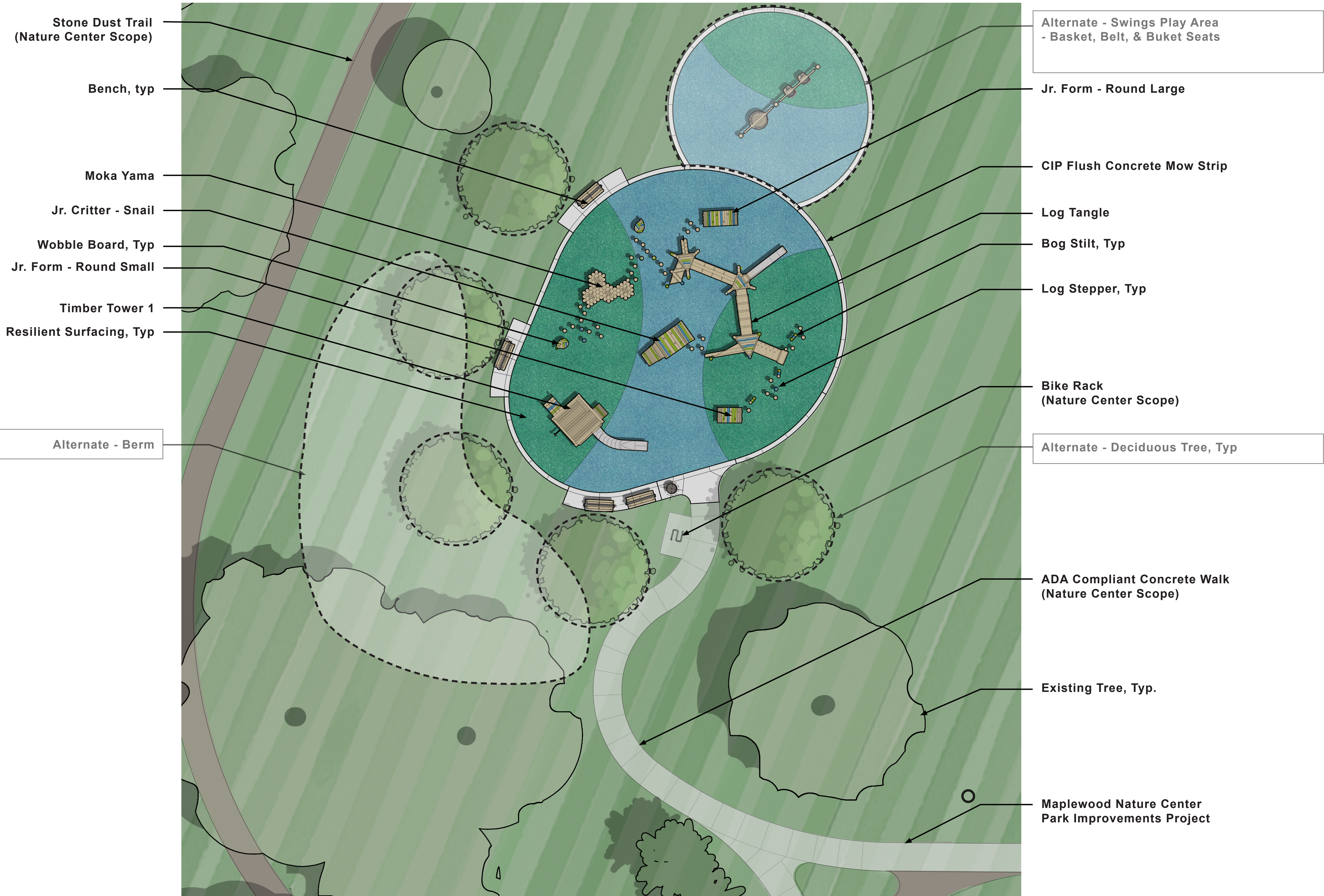


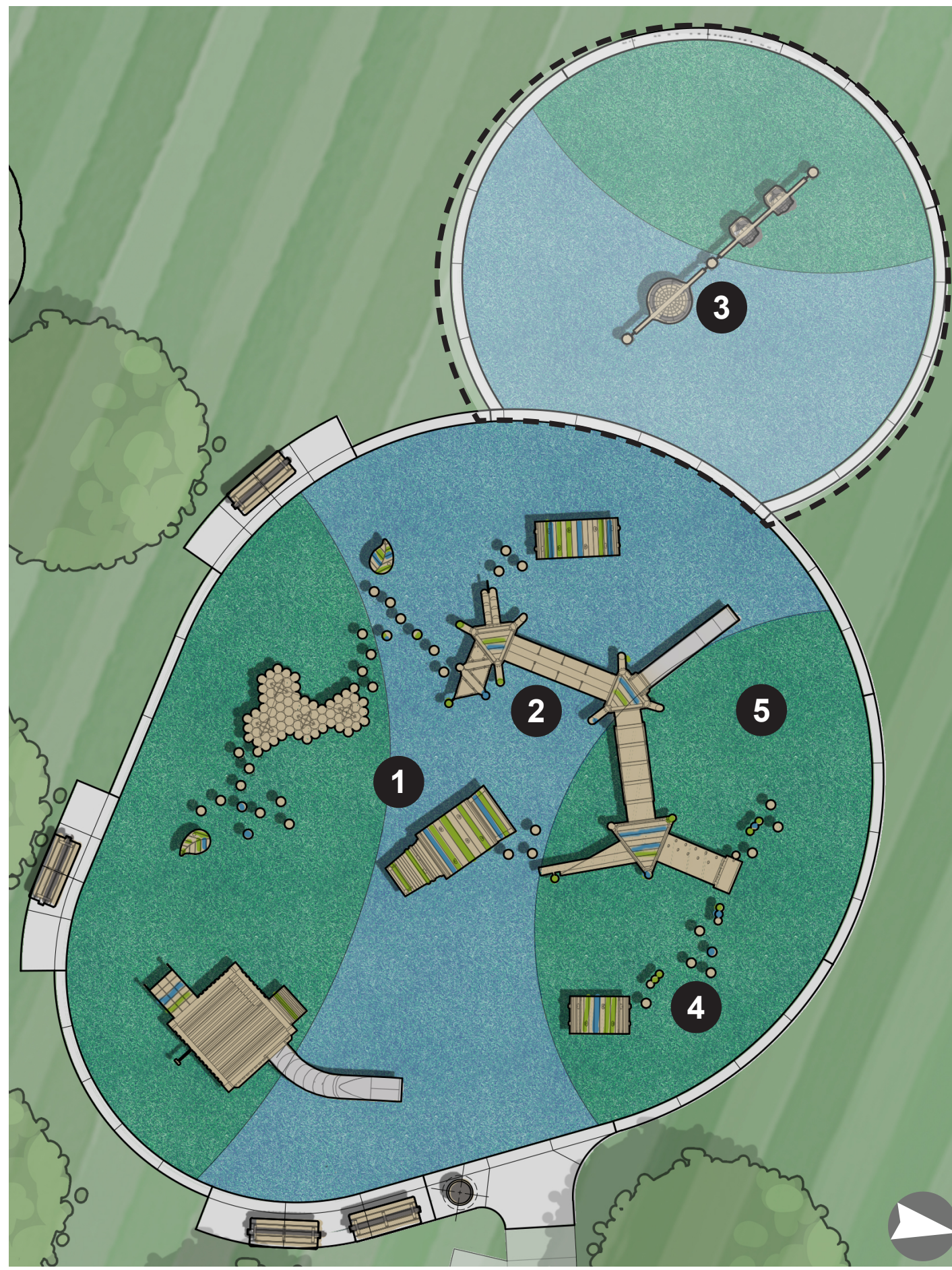


Maplewood Park Playground Improvements

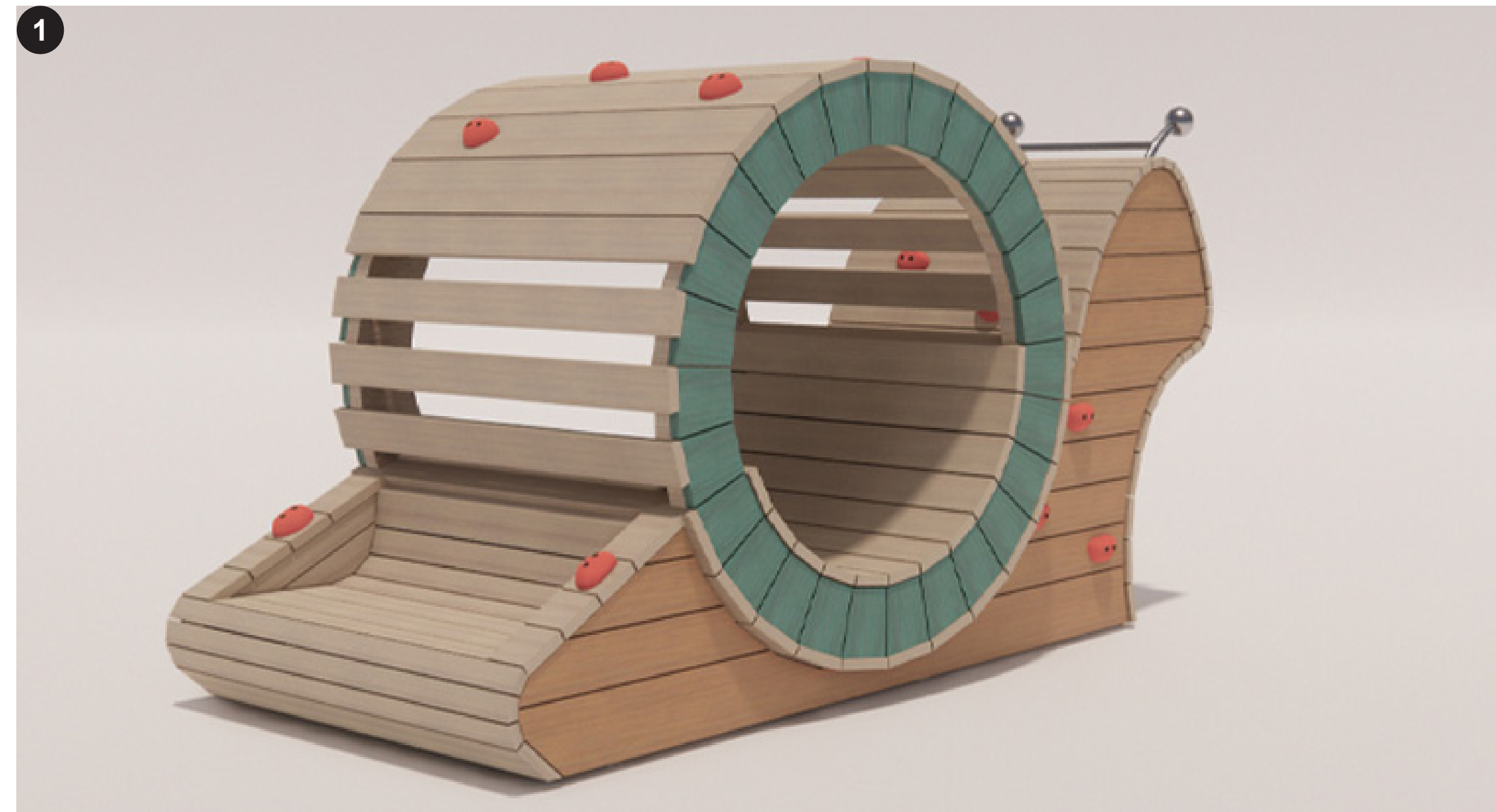
Existing Playground Imagery

350 Maplewood Drive, Rochester, NY
December 11, 2024





Play Reference Plan



Jr. Critter - Snail

Age Range: 2-5y



Log Tangle

Age Range: 5-12y



Resilient Rubber Surfacing



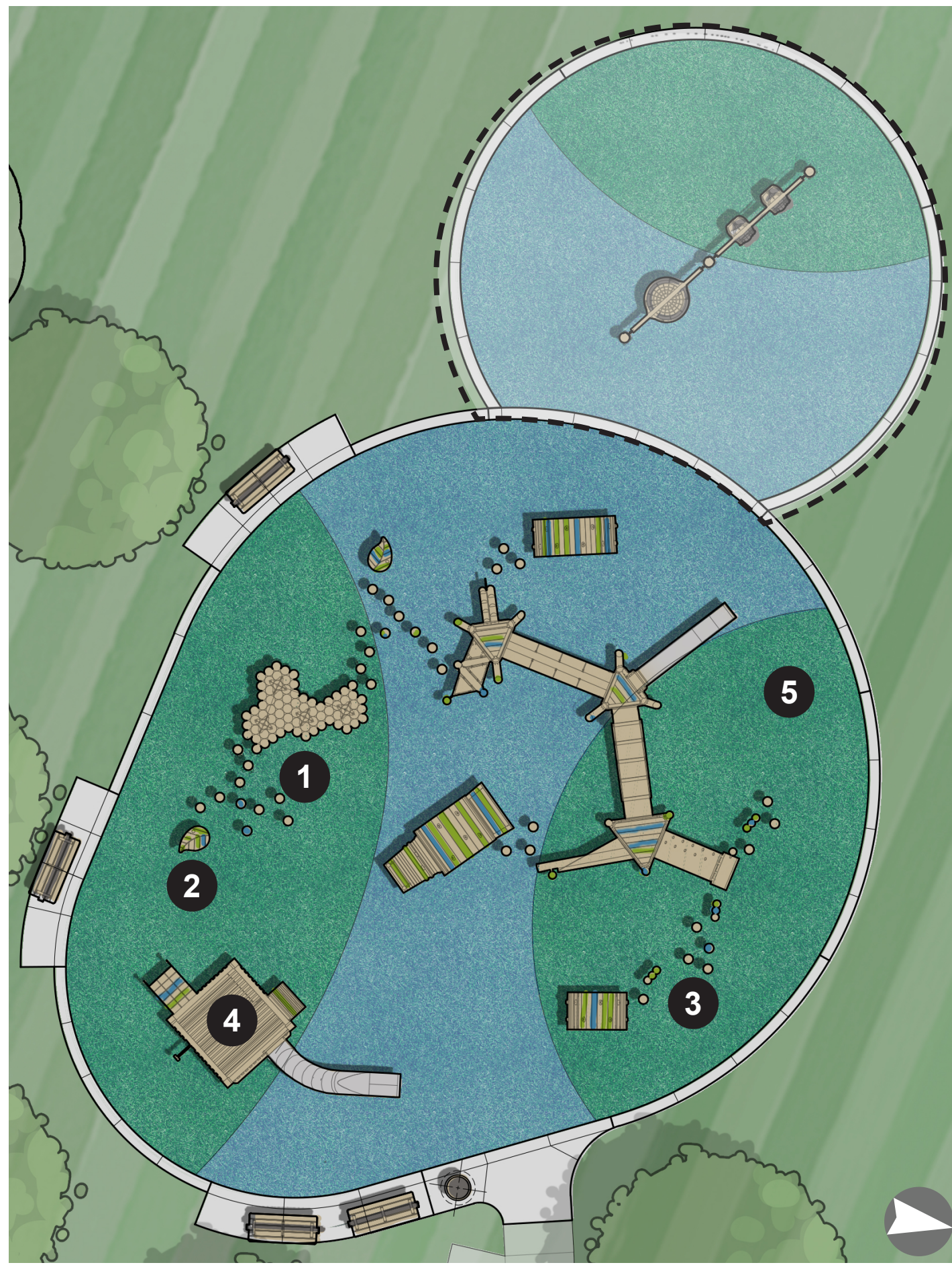
Alternate #2 Double Bay Swing & Basket

Age Range: 2-12y

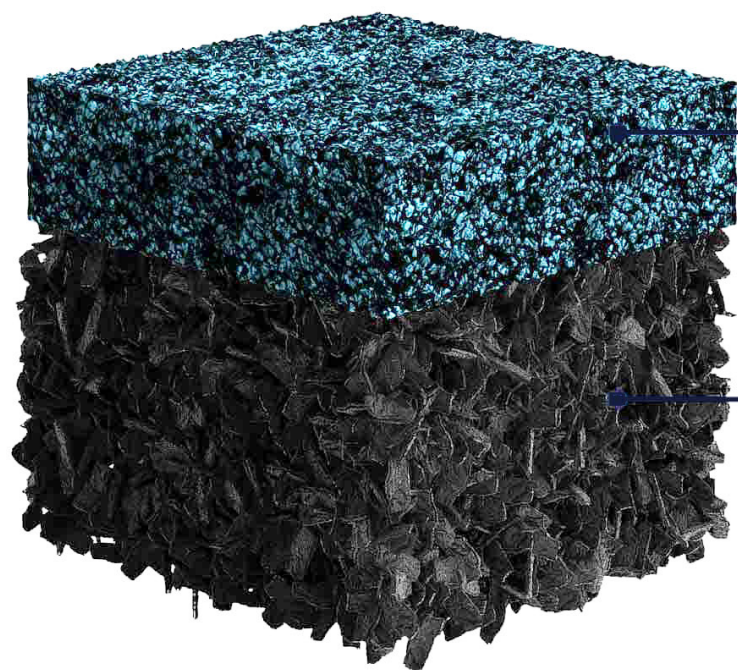
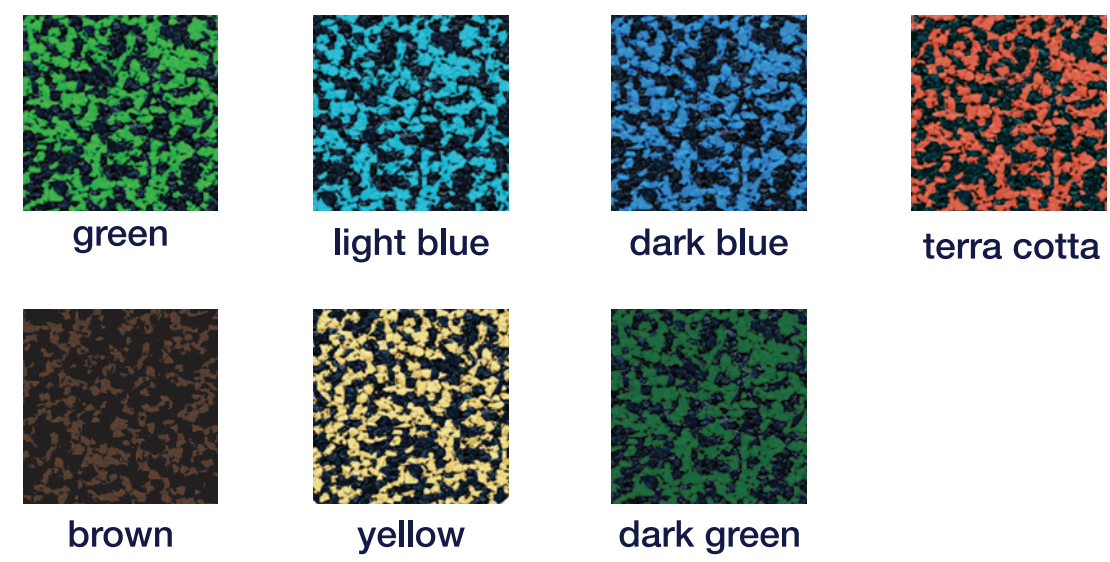


Bog Stilt & Log Steppers

Age Range: 5-12y



Play Reference Plan



unitary bonded 1.5" EPDM top layer
vivid and durable EPDM material is poured in place

3.5" rubber mulch base layer
maximum shock-absorption, performs over uneven terrain

Resilient Rubber Surfacing



Moku Yama

Age Range: 5-12y



Notched Play Post

Age Range: 5-12y



Wobble Board - Leaf

Age Range: 5-12y



Timber Tower

Age Range: 5-12y

Maplewood Park Playground Improvements

Play Equipment 02

350 Maplewood Drive, Rochester, NY
December 11, 2024



Maplewood Park Playground Improvements

3D View 01

350 Maplewood Drive, Rochester, NY
December 11, 2024



Maplewood Park Playground Improvements

3D View 02

350 Maplewood Drive, Rochester, NY
December 11, 2024



Maplewood Park Playground Improvements

3D View 03

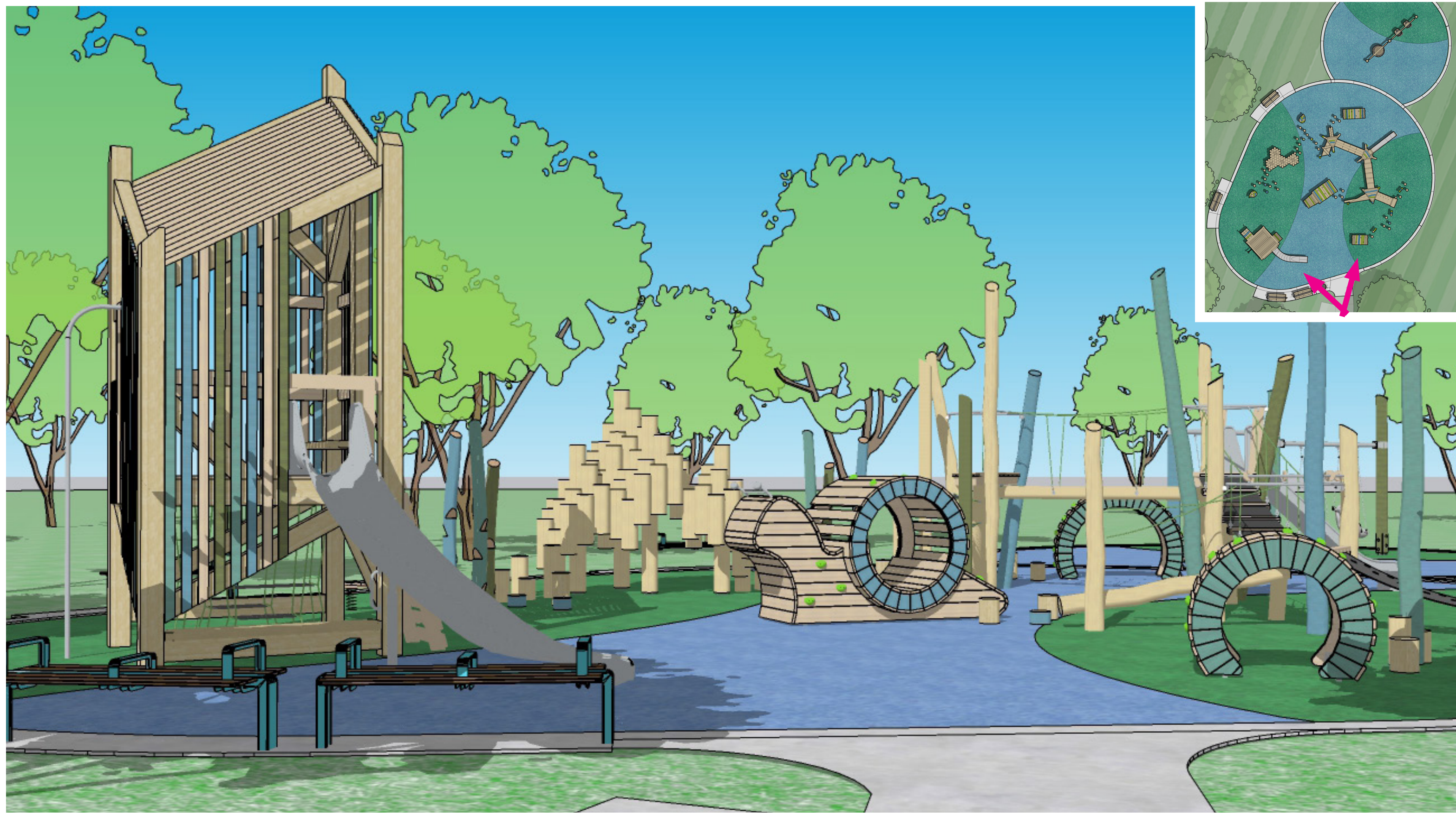
350 Maplewood Drive, Rochester, NY
December 11, 2024



Maplewood Park Playground Improvements

3D View 04

350 Maplewood Drive, Rochester, NY
December 11, 2024



View Looking West



View Looking East



View Looking South









View Looking East

Maplewood Park Playground Improvements

3D Views

350 Maplewood Drive, Rochester, NY
December 11, 2024

Timeline of Projects

Timeline of Maplewood Park Projects																
	2023				2024				2025				CY 2026			
	Q1	Q2	Q3	Q4	Q1	Q2	Q3	Q4	Q1	Q2	Q3	Q4	Q1	Q2	Q3	Q4
NATURE CENTER	ENGINEERING & DESIGN				BID & AWARD				CONSTRUCTION							
TRAIL IMPROVEMENTS					ENGINEERING & DESIGN				BID & AWARD				CONSTRUCTION			
PLAYGROUND IMPROVEMENTS					ENGINEERING & DESIGN				BID & AWARD				CONSTRUCTION			

Let's continue the discussion...

IN PERSON:

- Q&A
- To view project boards, ask questions and provide feedback to the project team, please visit the stations in the back of the room.
- Comments can be discussed directly with design team members or submitted on comment sheets provided.

VIRTUAL PARTICIPANTS:

- Q&A from online attendees: we will answer as many questions as time allows.
- Please visit the links on the next page to view the presentation materials virtually.
- Links to the project web pages have also been copied and pasted into the meeting chat.
- ***Comments may be submitted up to two weeks after the meeting – Wednesday, Dec. 25th.***

Thank you for your time!

For More Information...

Maplewood Park Nature Center

www.cityofrochester.gov/maplewoodnaturecenter/

Project Manager: Laura Civiletti, PE, RLA - Laura.Civiletti@CityofRochester.Gov

Maplewood Park Trail Improvements

www.cityofrochester.gov/maplewoodtrail/

Project Manager: Tyler Burke, PE - Tyler.Burke@CityofRochester.Gov

Maplewood Park Playground Improvements

www.cityofrochester.gov/maplewoodplay/

Project Manager: Jeff Mroczek, RLA – Jeff.Mroczek@CityofRochester.Gov