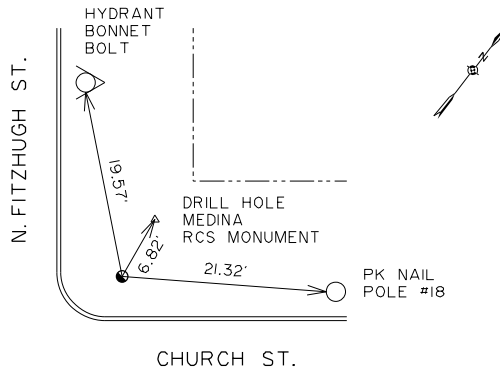


N.E. CHURCH & FITZHUGH
 REFERENCE BENCH MARKS

RTS N.W. STATE ST.
 8 W. MAIN ST.
 ELEV. 587.331

U.S.C. & G.S.
 ANDREWS "R"
 ELEV. 613.073

MONUMENT # 121220103
 ELEVATION 498.554 FT
 CITY DATUM



FRONT OF CARD

I _____ (PRINTED NAME) _____ N.Y.S.P.L.S. # _____
 HEREBY CERTIFY TO THE CITY OF ROCHESTER THAT THE VERTICAL CONTROL MONUMENT SHOWN ABOVE HAS BEEN ESTABLISHED IN THE CITY OF ROCHESTER DATUM USING PROPER METHODS TO ESTABLISH SECOND ORDER ACCURACY. (CLASS II) 0.033[√]LOOP IN MILES

BACK OF CARD

NOTES :

1. CERTIFICATION CARD TO BE 3 INCH x 5 INCH STANDARD CARD STOCK.
2. RTS SURVEY MONUMENT TO BE ESTABLISHED TO SECOND ORDER ACCURACY (CLASS II).
3. ELEVATION TO BE ESTABLISHED USING PUBLISHED CITY OF ROCHESTER "CITY DATUM" AND RUNNING THRU MINIMUM OF TWO KNOWN APPROVED BENCH MARKS.
4. ON CERTIFICATION CARD SHOW MINIMUM OF THREE SWING TIES, ELEVATION OF RTS SURVEY MONUMENT, REFERENCES TO VERTICAL CONTROL BENCH MARKS.
5. CERTIFICATION CARD TO BE SUBMITTED COMPLETE WITH FIELD NOTES.

CITY OF ROCHESTER		
VERTICAL CONTROL SURVEY MONUMENT CERTIFICATION CARD		
ISSUED	9-2-91	STANDARD
REVISED	1-1-17	DWG.NO.R626-3