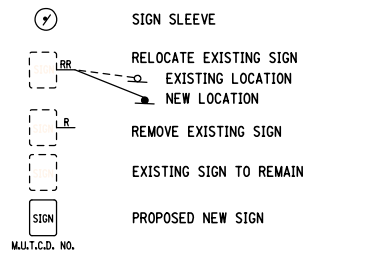


LEGEND



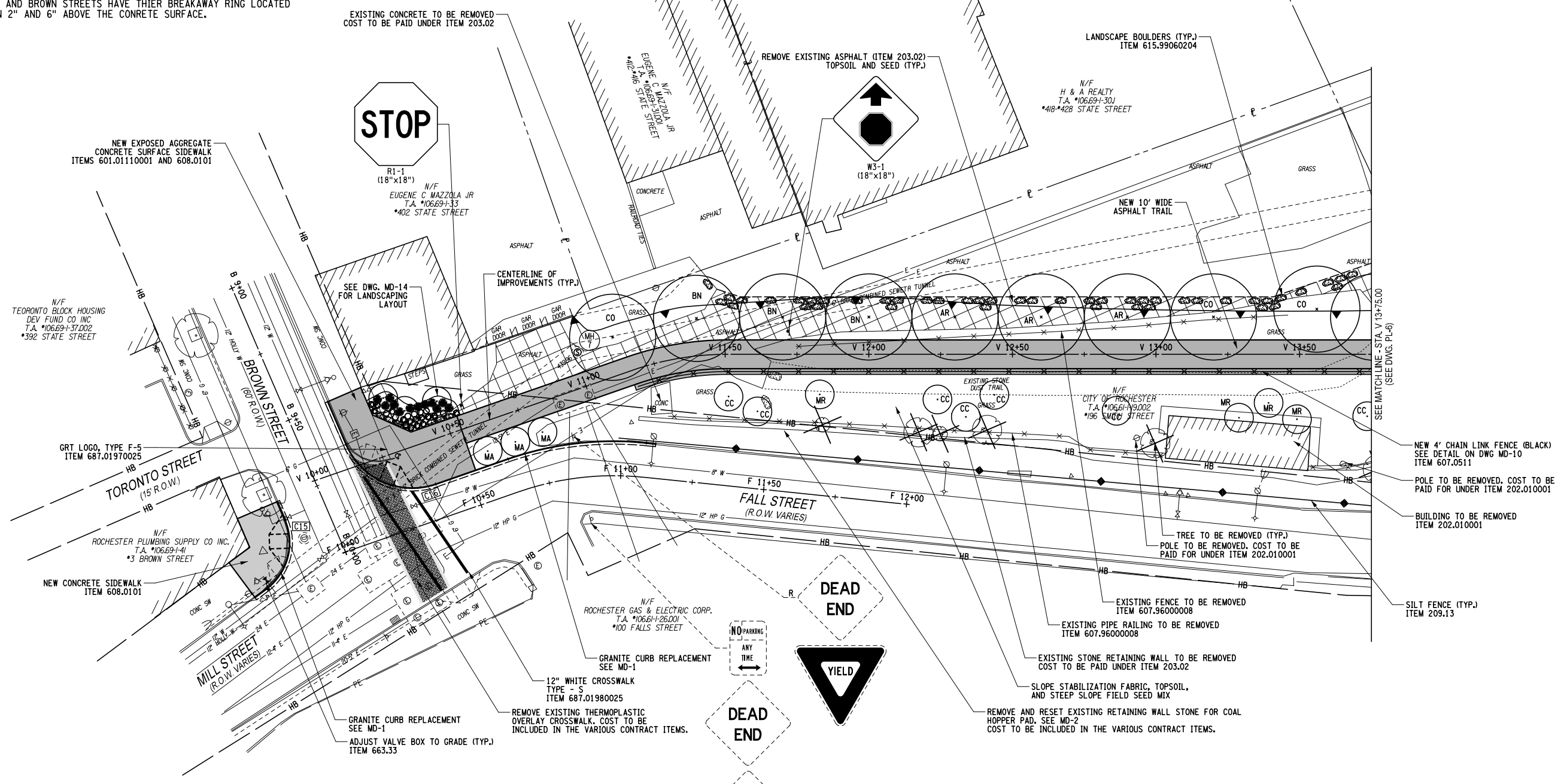
[C15]
 R = 20.00'
 L = 26.71'
 P.C. B 9+81.47, 15.00' RT.
 P.T. B 10+03.09, 30.34' RT.

[C16]
 R = 25.00'
 L = 37.47'
 P.C. B 9+65.79, 15.00' LT.
 P.T. F 10+37.44, 12.00' LT.

NOTES:

- THE CONTRACTOR SHALL ENSURE THE HYDRANTS ON THE SW CORNER OF MILL AND BROWN STREETS HAVE THEIR BREAKAWAY RING LOCATED BETWEEN 2" AND 6" ABOVE THE CONCRETE SURFACE.

Project: 192500292
 Plotted By: S. Miller
 Design File: U:\192500292\Transportation\Design\Plan_Sheet\PL-05.dgn
 Plot Date: 10/15/2013 12:32:03 PM



ITEM 202.010001 - REMOVAL OF STRUCTURES SHALL INCLUDE BUT NOT LIMITED TO;

- COMPLETE REMOVAL OF THE STRUCTURE INCLUDING, STRUCTURAL FRAME, ROOFING MATERIALS, SIDING, DOORS AND WINDOWS.
- REMOVAL OF THE EXISTING CONCRETE FOUNDATION.
- REMOVAL OF ALL ELECTRICAL CONDUITS INCLUDING SUPPORTS AND HANGERS.
- REMOVAL OF ALL LIGHTING FIXTURES AND APPURTENANCES.
- REMOVAL OF ALL ELECTRICAL BOXES, PANELS AND APPURTENANCES.
- REMOVAL OR ABANDONMENT OF ANY EXPOSED UTILITIES INCLUDING BUT NOT LIMITED TO, ELECTRIC DUCTS, GAS MAINS, OR HYDRALIC CONDUITS.
- REMOVAL OF ALL DEBRIS WITHIN THE EXISTING STRUCTURE.

PLANT MATERIAL LIST

QUAN.	ITEM NO.	KEY	LATIN NAME	COMMON NAME	CAL.	ROOT	REMARKS
3	611.0151	AR	ACER RUBRUM 'OCTOBER GLORY'	OCTOBER GLORY RED MAPLE	2"	B&B	
3	611.0151	BN	BETULA NIGRA 'HERITAGE'	RIVER BIRCH	2"	B&B	
3	611.0151	CO	CELTIS OCCIDENTALIS	COMMON HACKBERRY	2"	B&B	
6	611.0281	CC	CRATAEGUS CRUGALLI INERMIS 'CRUZAM'	CRUZAM HAWTHORN	1 1/2"	B&B	
3	611.0281	MA	MALUS 'AMERTRIZAM'	AMERTRIZAM CRABTREE	1 1/2"	B&B	
4	611.0281	MR	MALUS 'ROYALTY'	ROYALTY CRABTREE	1 1/2"	B&B	

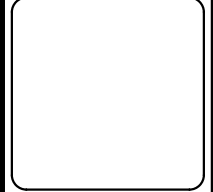
COPYRIGHT © 2013 STANTEC
 DRAWING ALTERATION
 IT IS A VIOLATION OF LAW FOR ANY PERSON, UNLESS ACTING UNDER THE DIRECTION OF LICENSED ARCHITECT, PROFESSIONAL ENGINEER, LANDSCAPE ARCHITECT, OR LAND SURVEYOR TO ALTER ANY ITEM ON THIS DOCUMENT IN ANY WAY.
 ANY LICENSEE WHO ALTERS THIS DOCUMENT IS REQUIRED BY LAW TO AFFIX HIS OR HER SEAL AND THE NOTATION "ALTERED BY" FOLLOWED BY HIS OR HER SIGNATURE AND SPECIFIC DESCRIPTION OF THE ALTERATIONS.

NO.	REVISIONS	DATE	BY
6			
5			
4			
3			
2			
1			
0			

PROJECT ENGINEER/ARCHITECT
 K. STETTNER
 PROJECT MANAGER
 J. HOFMANN

DRAWN BY
 S. MILLER
 SCALE
 1" = 20'

FIRST ISSUE DATE
 10/15/2013



Stantec
 Stantec Consulting Services Inc.
 61 Commercial Street, Suite 100
 Rochester, N.Y. 14614
 Tel: (585) 475-1440; Fax: (585) 272-1814
 www.stantec.com

PROJECT
 CITY OF ROCHESTER BICYCLE TRAILS
 VARIOUS LOCATIONS
 P.C. 12315; P.L.N. 4754.10; D033512
 CITY OF ROCHESTER, NEW YORK

TITLE OF DRAWING
 GENERAL PLAN SHEET
 VINCENT STREET OPEN SPACE

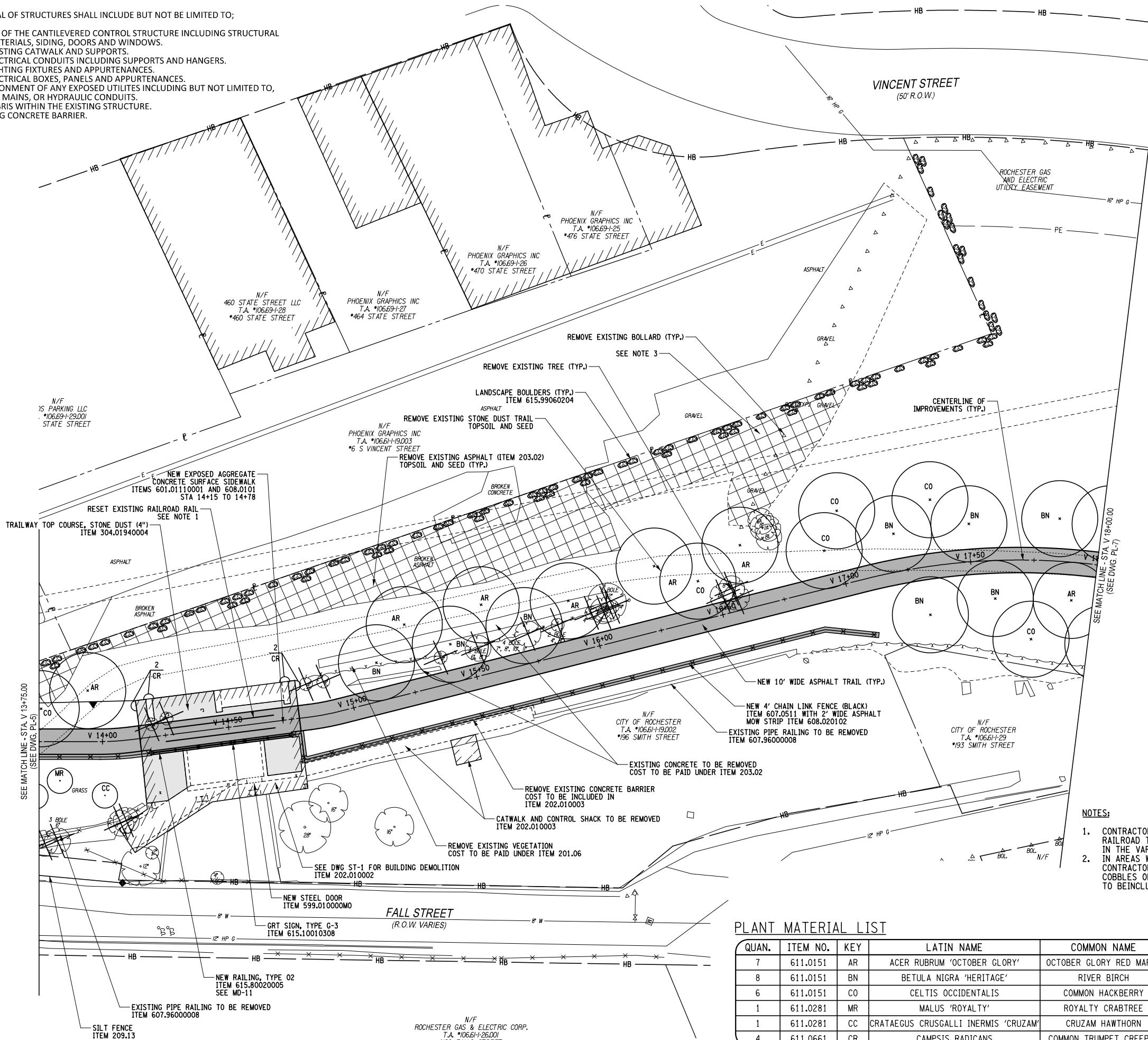
PROJECT NO.
 192500292

DRAWING NO.
 PL-5

SHEET 49 OF 67

ITEM 202.010003 - REMOVAL OF STRUCTURES SHALL INCLUDE BUT NOT BE LIMITED TO;

1. COMPLETE REMOVAL OF THE CANTILEVERED CONTROL STRUCTURE INCLUDING STRUCTURAL FRAME, ROOFING MATERIALS, SIDING, DOORS AND WINDOWS.
2. REMOVAL OF THE EXISTING CATWALK AND SUPPORTS.
3. REMOVAL OF ALL ELECTRICAL CONDUITS INCLUDING SUPPORTS AND HANGERS.
4. REMOVAL OF ALL LIGHTING FIXTURES AND APPURTENANCES.
5. REMOVAL OF ALL ELECTRICAL BOXES, PANELS AND APPURTENANCES.
6. REMOVAL OR ABANDONMENT OF ANY EXPOSED UTILITIES INCLUDING BUT NOT LIMITED TO, ELECTRIC DUCTS, GAS MAINS, OR HYDRAULIC CONDUITS.
7. REMOVAL OF ALL DEBRIS WITHIN THE EXISTING STRUCTURE.
8. REMOVAL OF EXISTING CONCRETE BARRIER.



- NOTES:**
1. CONTRACTOR SHALL REMOVE AND RESET THE EXISTING RAILROAD TRACKS AS INDICATED. COST TO BE INCLUDED IN THE VARIOUS CONTRACT ITEMS.
 2. IN AREAS WHERE COBBLES ARE TO BE REMOVED, THE CONTRACTOR SHALL SALVAGE AND STORE EXISTING COBBLES ON SITE FOR PICKUP BY CITY FORCES. COST TO BE INCLUDED UNDER ITEM 203.02.

PLANT MATERIAL LIST

QUAN.	ITEM NO.	KEY	LATIN NAME	COMMON NAME	CAL.	ROOT	REMARKS
7	611.0151	AR	ACER RUBRUM 'OCTOBER GLORY'	OCTOBER GLORY RED MAPLE	2"	B&B	
8	611.0151	BN	BETULA NIGRA 'HERITAGE'	RIVER BIRCH	2"	B&B	
6	611.0151	CO	CELTIS OCCIDENTALIS	COMMON HACKBERRY	2"	B&B	
1	611.0281	MR	MALUS 'ROYALTY'	ROYALTY CRABTREE	1 1/2"	B&B	
1	611.0281	CC	CRATAEGUS CRUGALLI INERMIS 'CRUZAM'	CRUZAM HAWTHORN	1 1/2"	B&B	
4	611.0661	CR	CAMPIS RADICANS	COMMON TRUMPET CREEPER	-	#2 CONT.	STAKED

Project: 192500292
 Design: S. Miller
 Date: 10/15/2013
 Time: 12:32:04 PM

COPYRIGHT © 2013
 STANTEC
 DRAWING ALTERATION
 IT IS A VIOLATION OF LAW FOR ANY PERSON, UNLESS ACTING UNDER THE DIRECTION OF LICENSED ARCHITECT, PROFESSIONAL ENGINEER, LANDSCAPE ARCHITECT, OR LAND SURVEYOR TO ALTER ANY ITEM ON THIS DOCUMENT IN ANY WAY.
 ANY LICENSEE WHO ALTERS THIS DOCUMENT IS REQUIRED BY LAW TO AFFIX HIS OR HER SEAL AND THE NOTATION "ALTERED BY" FOLLOWED BY HIS OR HER SIGNATURE AND SPECIFIC DESCRIPTION OF THE ALTERATIONS.

ANSI D - 22" X 34"

6									
5									
4									
3									
2									
1									
0									
								REVISIONS	DATE
								BY	DATE

PROJECT ENGINEER/ARCHITECT
 K. STETTNER
PROJECT MANAGER
 J. HOFMANN

DRAWN BY
 S. MILLER
SCALE
 1" = 20'
FIRST ISSUE DATE
 10/15/2013

Stantec Consulting Services Inc.
 61 Commercial Street, Suite 100
 Rochester, N.Y. 14614
 Tel: (585) 475-1440; Fax: (585) 272-1814
 www.stantec.com

PROJECT
 CITY OF ROCHESTER BICYCLE TRAILS
 VARIOUS LOCATIONS
 P.C. 12315; P.L.N. 4754.10; D033512
 CITY OF ROCHESTER, NEW YORK

TITLE OF DRAWING
 GENERAL PLAN SHEET
 VINCENT STREET OPEN SPACE

PROJECT NO.
 192500292

DRAWING NO.
 PL-6

SHEET 50 OF 67

DRAWING ALTERATION
 IT IS A VIOLATION OF LAW FOR ANY PERSON, UNLESS ACTING UNDER THE DIRECTION OF LICENSED ARCHITECT, PROFESSIONAL ENGINEER, LANDSCAPE ARCHITECT, OR LAND SURVEYOR TO ALTER ANY ITEM ON THIS DOCUMENT IN ANY WAY.
 ANY LICENSEE WHO ALTERS THIS DOCUMENT IS REQUIRED BY LAW TO AFFIX HIS OR HER SEAL AND THE NOTATION "ALTERED BY" FOLLOWED BY HIS OR HER SIGNATURE AND SPECIFIC DESCRIPTION OF THE ALTERATIONS.

Project: 192500292
 Plotted By: swmiller
 Design File: U:\192500292\Transportation\Drawing\Plan_Sett\PL-07.dgn
 Plot Date: 10/15/2013
 Time: 12:32:05 PM

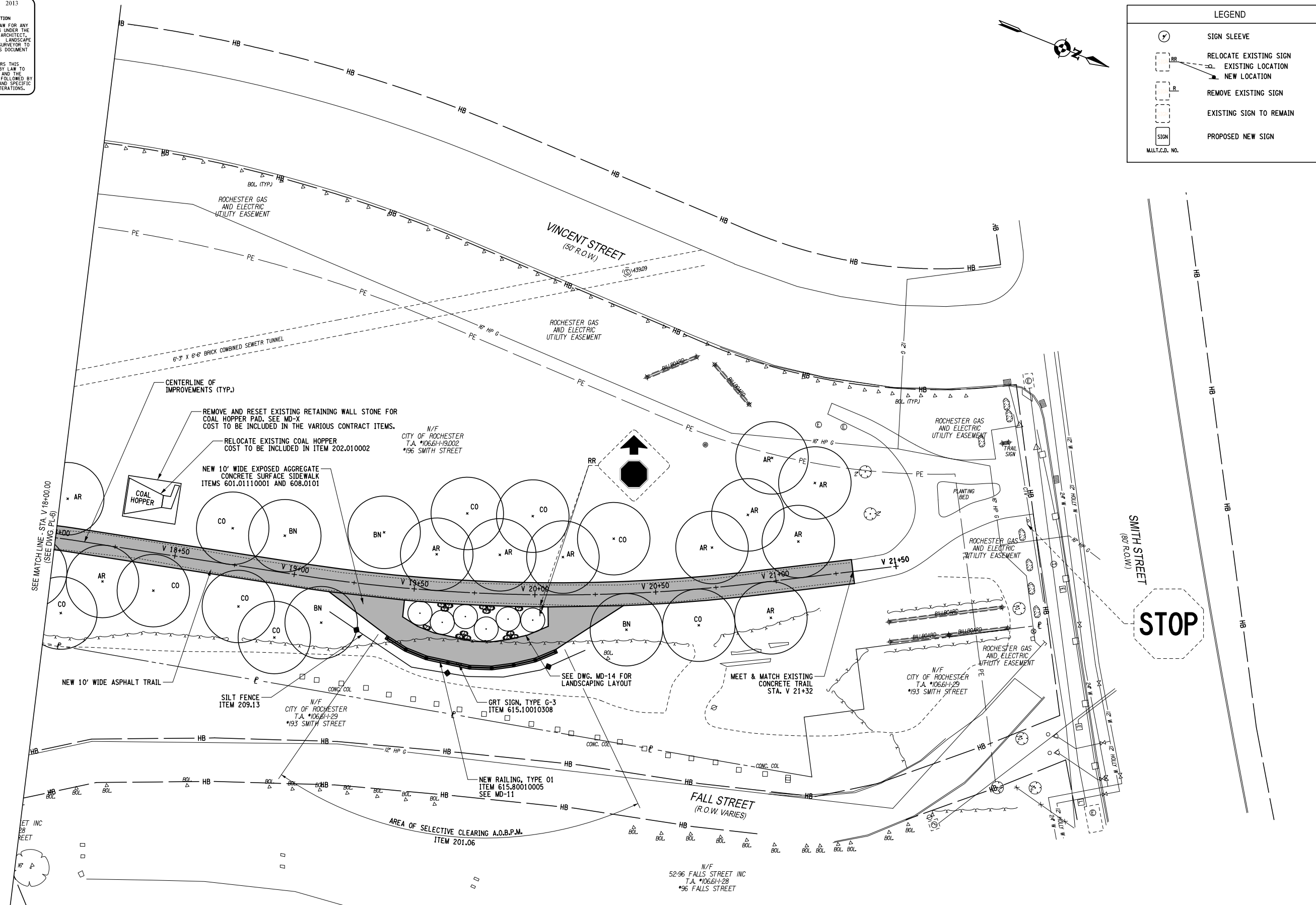
LEGEND

- (Symbol: Circle with dot) SIGN SLEEVE
- (Symbol: Dashed line with dot) RELOCATE EXISTING SIGN
- (Symbol: Solid line with dot) EXISTING LOCATION
- (Symbol: Dashed line with 'X') REMOVE EXISTING SIGN
- (Symbol: Dashed line) EXISTING SIGN TO REMAIN
- (Symbol: Solid line) PROPOSED NEW SIGN

M.U.T.C.D. NO.

NO.	REVISIONS	DATE	BY
6			
5			
4			
3			
2			
1			
0			

PROJECT ENGINEER/ARCHITECT
K. STETTNER
 PROJECT MANAGER
J. HOFMANN
 DRAWN BY
S. MILLER
 SCALE
1"=20'
 FIRST ISSUE DATE
10/15/2013



PLANT MATERIAL LIST

QUAN.	ITEM NO.	KEY	LATIN NAME	COMMON NAME	CAL.	ROOT	REMARKS
11	611.0151	AR	ACER RUBRUM 'OCTOBER GLORY'	OCTOBER GLORY RED MAPLE	2"	B&B	
4	611.0151	BN	BETULA NIGRA 'HERITAGE'	RIVER BIRCH	2"	B&B	
9	611.0151	CO	CELTIS OCCIDENTALIS	COMMON HACKBERRY	2"	B&B	

Stantec
 Stantec Consulting Services Inc.
 61 Commercial Street, Suite 100
 Rochester, N.Y. 14614
 Tel: (585) 475-1440; Fax: (585) 272-1814
 www.stantec.com

PROJECT
**CITY OF ROCHESTER BICYCLE TRAILS
 VARIOUS LOCATIONS
 P.C. 12315; P.L.N. 4754.10; D033512
 CITY OF ROCHESTER, NEW YORK**
 TITLE OF DRAWING
**GENERAL PLAN SHEET
 VINCENT STREET OPEN SPACE**

PROJECT NO.
192500292
 DRAWING NO.
PL-7
 SHEET 51 OF 67