

Figures

FIGURE 1

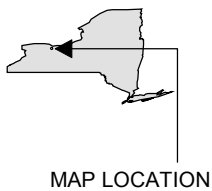


I:\Rochester-C.1186261157_Vacuum-Oil-Bcp\Docs\DWG\MXD\Fig1-SITELOC-rev.mxd

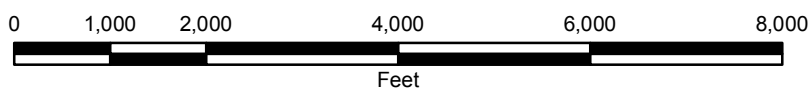
PLOTDATE: 10/23/15 11:08:32 AM youngas

ADAPTED FROM: ROCHESTER EAST USGS QUADRANGLE

**BROWNFIELD CLEANUP PROGRAM
 REMEDIAL INVESTIGATION WORK PLAN
 CITY OF ROCHESTER
 PORTION OF FORMER VACUUM OIL
 REFINERY
 ROCHESTER, NEW YORK**



SITE LOCATION



- NOTES:**
1. TAX PARCELS PROVIDED BY MONROE COUNTY DES, MARCH 2010.
 2. CITY PARCEL OWNERSHIP VERIFIED THROUGH THE CITY OF ROCHESTER PROPERTY INFORMATION WEBSITE ON MAY 11, 2010. (<http://www.cityofrochester.gov/GIS/>)
 3. AERIAL IMAGERY PROVIDED BY NYS GIS CLEARINGHOUSE, DATED SPRING 2012.
 4. 1320 S. PLYMOUTH AVENUE WAS FORMERLY IDENTIFIED AS 1315 S.PLYMOUTH AVENUE AND TAX PARCEL 135.35-1-18.004.
 5. 31, 69, AND 75 COTTAGE STREET ARE NOT CURRENTLY KNOWN TO HAVE BEEN SITUATED WITHIN THE FORMER VACUUM OIL REFINERY FOOTPRINT, BUT ARE INCLUDED IN THE BCP APPLICATION AND PROPOSED REMEDIAL INVESTIGATION.
 6. 5 FLINT STREET AND 15 FLINT STREET ARE CURRENTLY BEING INVESTIGATED BY OTHER ENTITIES (NYSDEC BCP SITE NO. C828162).

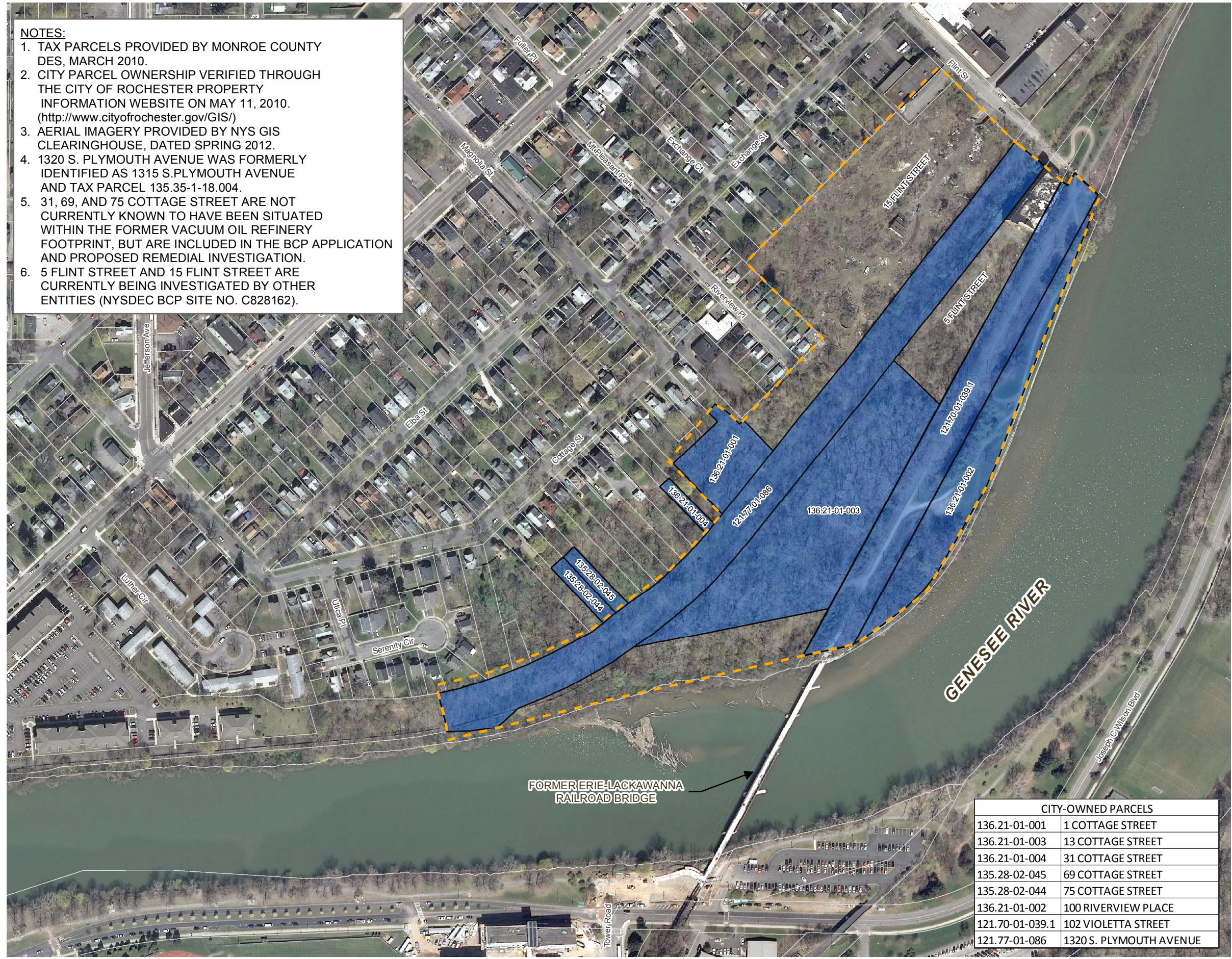


FIGURE 2



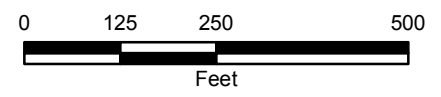
LEGEND

- FORMER VACUUM OIL REFINERY (APPROXIMATE)
- BROWNFIELD CLEANUP PROGRAM SITE LIMITS (APPROXIMATELY 15.4 ACRES)

**BROWNFIELD CLEANUP PROGRAM
REMEDIAL INVESTIGATION
WORK PLAN
CITY OF ROCHESTER
PORTION OF FORMER
VACUUM OIL REFINERY**

1, 13, 31, 69, AND 75
COTTAGE STREET;
100 RIVERVIEW PLACE;
102 VIOLETTA STREET;
AND PORTION OF
1320 S.PLYMOUTH AVENUE
ROCHESTER, NEW YORK

SITE LAYOUT



CITY-OWNED PARCELS	
136.21-01-001	1 COTTAGE STREET
136.21-01-003	13 COTTAGE STREET
136.21-01-004	31 COTTAGE STREET
135.28-02-045	69 COTTAGE STREET
135.28-02-044	75 COTTAGE STREET
136.21-01-002	100 RIVERVIEW PLACE
121.70-01-039.1	102 VIOLETTA STREET
121.77-01-086	1320 S. PLYMOUTH AVENUE

OCTOBER 2015
11862.61157



- NOTES:**
1. TAX PARCELS PROVIDED BY MONROE COUNTY DES, MARCH 2010.
 2. CITY PARCEL OWNERSHIP VERIFIED THROUGH THE CITY OF ROCHESTER PROPERTY INFORMATION WEBSITE ON MAY 11, 2010. (<http://www.cityofrochester.gov/GIS/>)
 3. AERIAL IMAGERY PROVIDED BY NYS GIS CLEARINGHOUSE, DATED SPRING 2012.
 4. 1320 S. PLYMOUTH AVENUE WAS FORMERLY IDENTIFIED AS 1315 S.PLYMOUTH AVENUE AND TAX PARCEL 135.35-1-18.004.
 5. 31, 69, AND 75 COTTAGE STREET ARE NOT CURRENTLY KNOWN TO HAVE BEEN SITUATED WITHIN THE FORMER VACUUM OIL REFINERY FOOTPRINT, BUT ARE INCLUDED IN THE BCP APPLICATION AND PROPOSED REMEDIAL INVESTIGATION.
 6. 5 FLINT STREET AND 15 FLINT STREET ARE CURRENTLY BEING INVESTIGATED BY OTHER ENTITIES (NYSDEC BCP SITE NO. C828162).

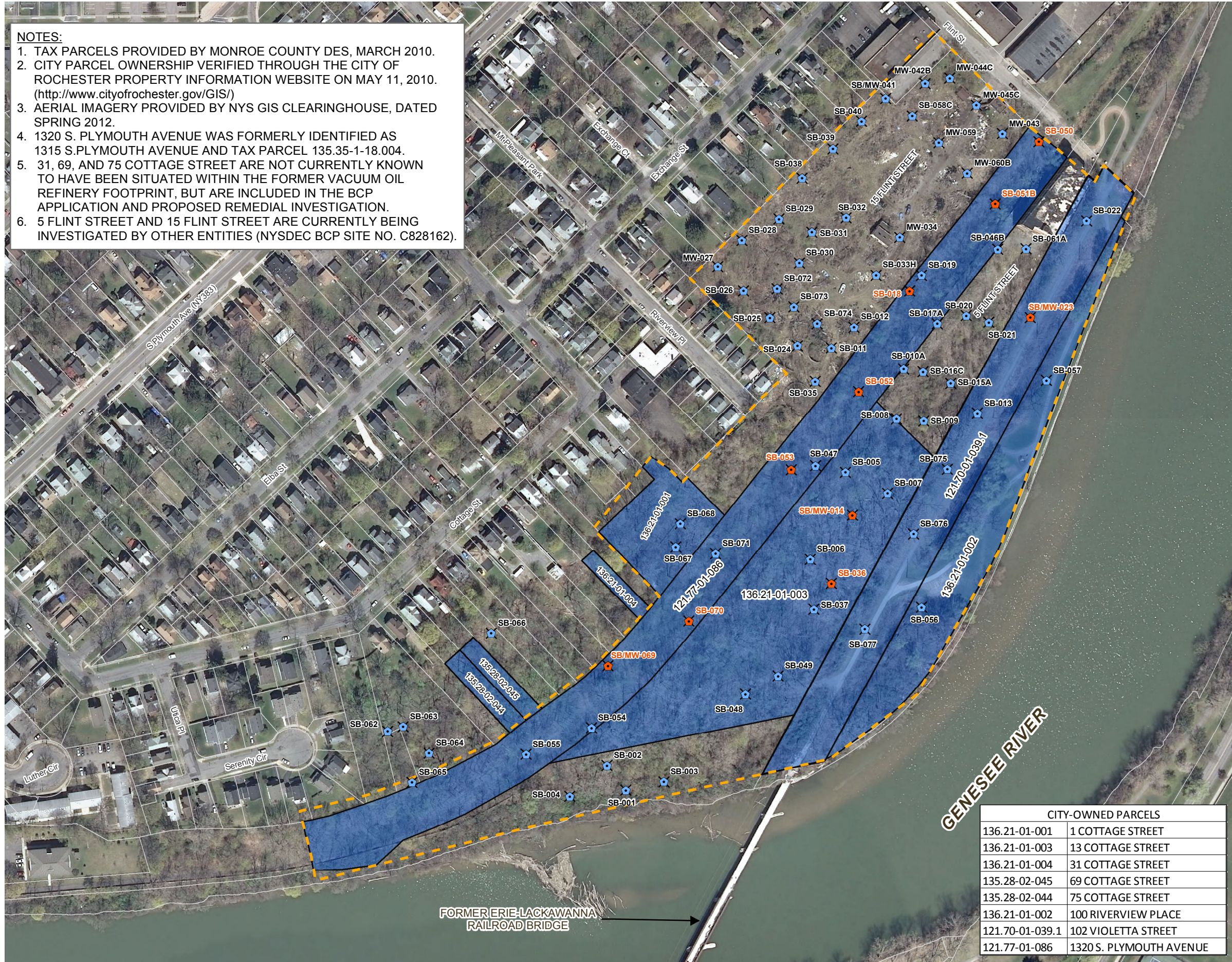


FIGURE 3



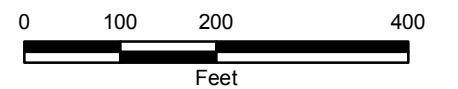
LEGEND

- EXXON MOBIL SAMPLE LOCATION
- 2008 VALIDATED SAMPLE LOCATION (ON SITE)
- FORMER VACUUM OIL REFINERY (APPROXIMATE)
- BROWNFIELD CLEANUP PROGRAM SITE LIMITS (APPROXIMATELY 15.4 ACRES)

**BROWNFIELD CLEANUP PROGRAM
REMEDIAL INVESTIGATION
WORK PLAN
CITY OF ROCHESTER
PORTION OF FORMER
VACUUM OIL REFINERY**

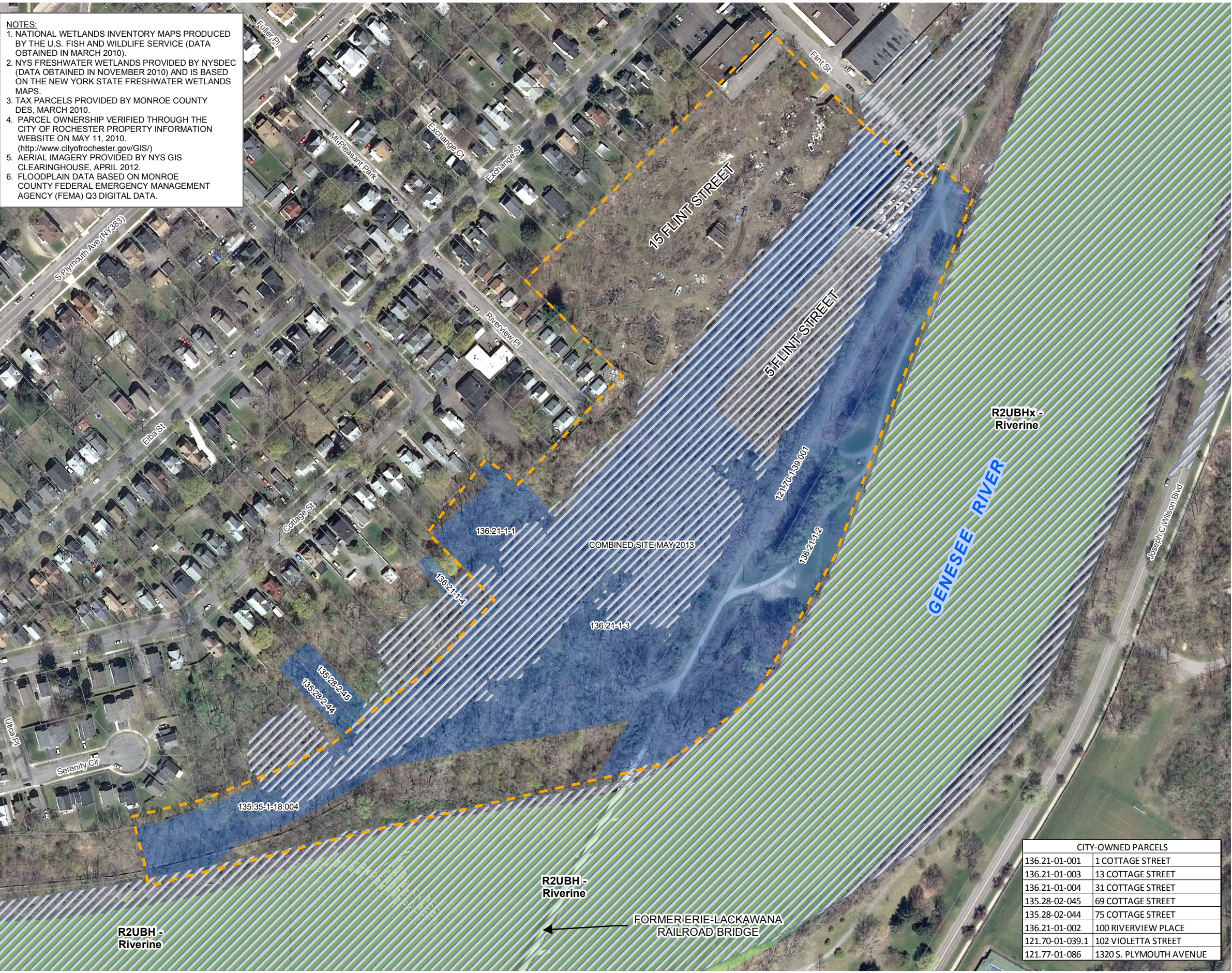
1, 13, 31, 69, AND 75
COTTAGE STREET;
100 RIVERVIEW PLACE;
102 VIOLETTA STREET;
AND PORTION OF
1320 S.PLYMOUTH AVENUE
ROCHESTER, NEW YORK

**2008 VALIDATED
SAMPLE LOCATIONS**



OCTOBER 2015
11862.61157










NOTES:
 1. NATIONAL WETLANDS INVENTORY MAPS PRODUCED BY THE U.S. FISH AND WILDLIFE SERVICE (DATA OBTAINED IN MARCH 2010).
 2. NYS FRESHWATER WETLANDS PROVIDED BY NYSDEC (DATA OBTAINED IN NOVEMBER 2010) AND IS BASED ON THE NEW YORK STATE FRESHWATER WETLANDS MAPS.
 3. TAX PARCELS PROVIDED BY MONROE COUNTY DES, MARCH 2010.
 4. PARCEL OWNERSHIP VERIFIED THROUGH THE CITY OF ROCHESTER PROPERTY INFORMATION WEBSITE ON MAY 11, 2010. (<http://www.cityofrochester.gov/GIS/>)
 5. AERIAL IMAGERY PROVIDED BY NYS GIS CLEARINGHOUSE, APRIL 2012.
 6. FLOODPLAIN DATA BASED ON MONROE COUNTY FEDERAL EMERGENCY MANAGEMENT AGENCY (FEMA) Q3 DIGITAL DATA.

FIGURE 4



LEGEND

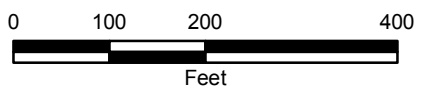
-  FORMER VACUUM OIL REFINERY (APPROXIMATE)
-  BROWNFIELD CLEANUP PROGRAM SITE LIMITS (APPROXIMATELY 15.4 ACRES)
-  FEMA 100-YR FLOOD ZONE
-  NATIONAL WETLANDS INVENTORY
-  NYS FRESHWATER WETLAND

**BROWNFIELD CLEANUP PROGRAM
 REMEDIAL INVESTIGATION
 WORK PLAN
 CITY OF ROCHESTER
 PORTION OF FORMER VACUUM
 OIL REFINERY**

1, 13, 31, 69, AND 75 COTTAGE STREET;
 100 RIVERVIEW PLACE;
 102 VIOLETTA STREET; AND
 PORTION OF
 1320 S. PLYMOUTH AVENUE
 ROCHESTER, NEW YORK

**STATE AND
 FEDERAL WETLANDS
 AND FEMA FLOODPLAIN**

CITY-OWNED PARCELS	
136.21-01-001	1 COTTAGE STREET
136.21-01-003	13 COTTAGE STREET
136.21-01-004	31 COTTAGE STREET
135.28-02-045	69 COTTAGE STREET
135.28-02-044	75 COTTAGE STREET
136.21-01-002	100 RIVERVIEW PLACE
121.70-01-039.1	102 VIOLETTA STREET
121.77-01-086	1320 S. PLYMOUTH AVENUE



OCTOBER 2015
 11862.61157



- NOTES:**
1. TAX PARCELS PROVIDED BY MONROE COUNTY DES, MARCH 2010.
 2. CITY PARCEL OWNERSHIP VERIFIED THROUGH THE CITY OF ROCHESTER PROPERTY INFORMATION WEBSITE ON MAY 11, 2010. (<http://www.cityofrochester.gov/GIS/>)
 3. AERIAL IMAGERY PROVIDED BY NYS GIS CLEARINGHOUSE, DATED SPRING 2012.
 4. 1320 S. PLYMOUTH AVENUE WAS FORMERLY IDENTIFIED AS 1315 S.PLYMOUTH AVENUE AND TAX PARCEL 135.35-1-18.004.
 5. 31, 69, AND 75 COTTAGE STREET ARE NOT CURRENTLY KNOWN TO HAVE BEEN SITUATED WITHIN THE FORMER VACUUM OIL REFINERY FOOTPRINT, BUT ARE INCLUDED IN THE BCP APPLICATION AND PROPOSED REMEDIAL INVESTIGATION.
 6. 5 FLINT STREET AND 15 FLINT STREET ARE CURRENTLY BEING INVESTIGATED BY OTHER ENTITIES (NYSDEC BCP SITE NO. C828162).

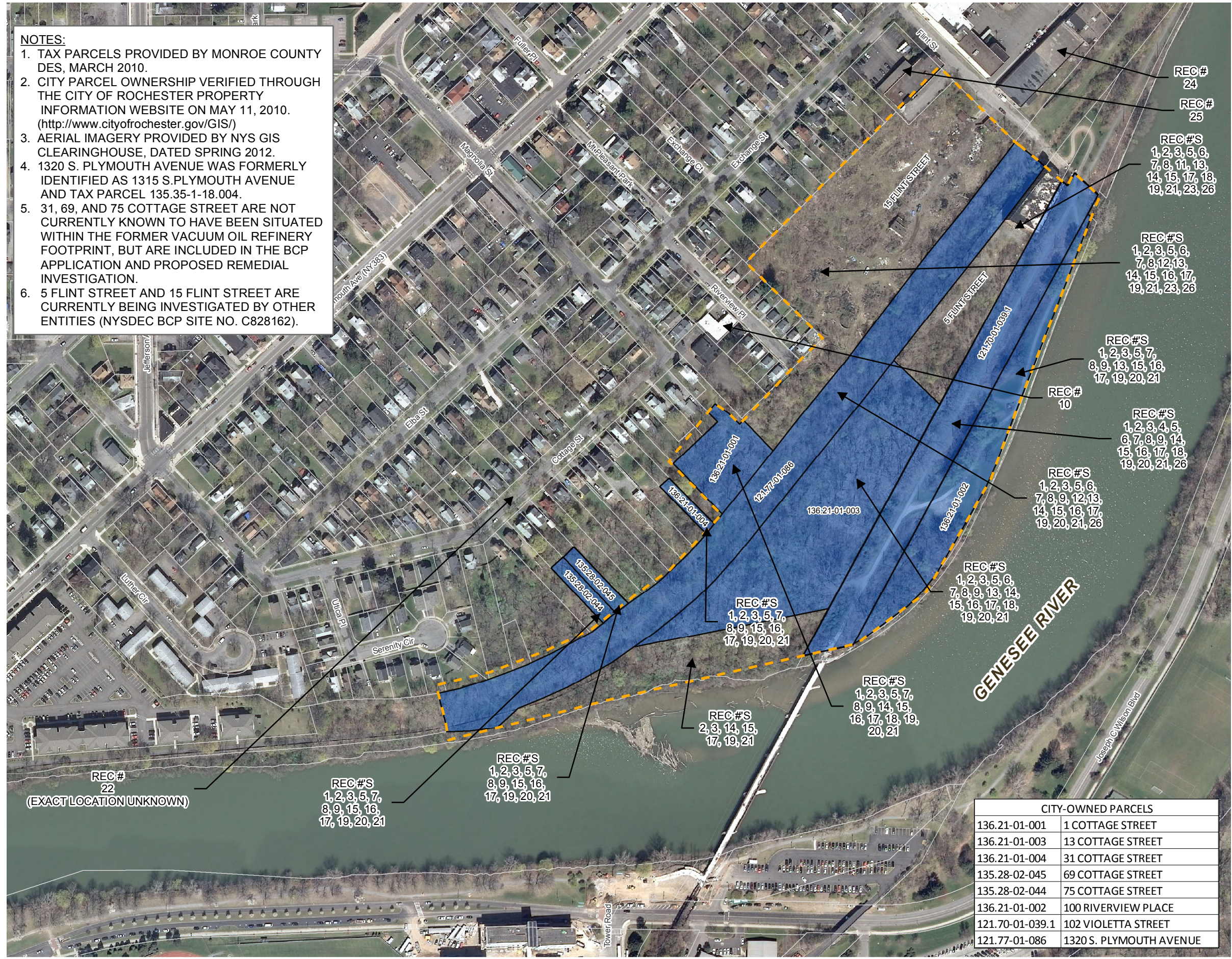


FIGURE 5



LEGEND

- FORMER VACUUM OIL REFINERY (APPROXIMATE)
- BROWNFIELD CLEANUP PROGRAM SITE LIMITS (APPROXIMATELY 15.4 ACRES)

**BROWNFIELD CLEANUP PROGRAM
REMEDIAL INVESTIGATION
WORK PLAN
CITY OF ROCHESTER
PORTION OF FORMER
VACUUM OIL REFINERY**

1, 13, 31, 69, AND 75
COTTAGE STREET;
100 RIVERVIEW PLACE;
102 VIOLETTA STREET;
AND PORTION OF
1320 S.PLYMOUTH AVENUE
ROCHESTER, NEW YORK

**LOCATIONS OF
RECOGNIZED
ENVIRONMENTAL
CONDITIONS**



OCTOBER 2015
11862.61157

CITY-OWNED PARCELS	
136.21-01-001	1 COTTAGE STREET
136.21-01-003	13 COTTAGE STREET
136.21-01-004	31 COTTAGE STREET
135.28-02-045	69 COTTAGE STREET
135.28-02-044	75 COTTAGE STREET
136.21-01-002	100 RIVERVIEW PLACE
121.70-01-039.1	102 VIOLETTA STREET
121.77-01-086	1320 S. PLYMOUTH AVENUE

FIGURE 6



INVESTIGATIVE DERIVED WASTE (IDW) IS PROPOSED TO BE STORED IN THIS LOCATION. TEMPORARY STAGING OF IDW MAY OCCUR ON OTHER AREAS OF THE SITE UNTIL A SUITABLE TIME TO TRANSPORT TO THE IDW AREA (i.e. 55 GALLON DRUMS STAGED ON PALLETS NEAR 1 OR MORE DECONTAMINATION AREAS; PURGE WATER STAGED IN DRUMS NEAR MONITORING WELLS, ETC).

PERSONNEL AND VEHICULAR DECONTAMINATION AREA

(1 OR MORE DECONTAMINATION AREAS WILL ALSO BE SITUATED ON SITE AND LOCATIONS WILL BE DISCUSSED WITH THE NYSDEC PRIOR TO CONSTRUCTION)

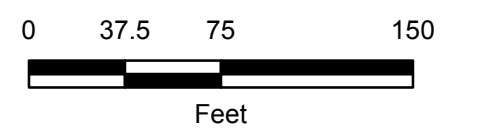
LEGEND

- PROP_SAMP_LOCS-2015-rev10-...**
- SB-100 PROPOSED COMBINED SAMPLE LOCATION (SS, GW, SB AND/OR SV)
 - SS-100 PROPOSED COMBINED SAMPLE LOCATION (SS, GW, SB AND/OR SV)
 - SV-100 PROPOSED COMBINED SAMPLE LOCATION (SS, GW, SB AND/OR SV)
 - GW-100 PROPOSED COMBINED SAMPLE LOCATION (SS, GW, SB AND/OR SV)
 - OVR-131/ BED-105 PROPOSED NESTED BEDROCK INTERFACE MONITORING WELL - 5
 - OVR-106 PROPOSED OVERBURDEN MONITORING WELL - 25
 - SB-129 PROPOSED SOIL BORING - 76
 - SS-114 PROPOSED SURFACE SOIL SAMPLE - 54
 - TP-149 PROPOSED TEST PIT - 52
 - PROPOSED INITIAL SURVEY POINT (CITY LAND SURVEY DEPARTMENT)
 - EXISTING MULTI-USE TRAILS
 - BROWNFIELD CLEANUP PROGRAM SITE LIMITS (APPROXIMATELY 15.4 ACRES)
 - FORMER VACUUM OIL REFINERY SITE (APPROXIMATE)
 - PROPOSED PATHS/LANES TO BE CLEARED TO FACILITATE ADVANCEMENT OF SOIL BORINGS, EXCAVATION OF TEST PITS, AND INSTALLATION OF GROUNDWATER MONITORING WELLS (APPROXIMATELY 3 ACRES, 15' WIDE/ 15' TALL)
 - NOT PART OF CITY OF ROCHESTER BROWNFIELD CLEANUP PROGRAM SITE; HOWEVER, THESE PARCELS ARE BEING INVESTIGATED BY OTHER ENTITIES.

CITY OF ROCHESTER BROWNFIELD CLEANUP PROGRAM REMEDIAL INVESTIGATION WORK PLAN PORTION OF FORMER VACUUM OIL REFINERY

1, 13, 31, 69, AND 75 COTTAGE STREET; 100 RIVERVIEW PLACE; 102 VIOLETTA STREET; AND PORTION OF 1320 S. PLYMOUTH AVENUE ROCHESTER, NEW YORK

PROPOSED SAMPLE LOCATIONS



OCTOBER 2015 11862.61157



NOTES:

- LOCATIONS OF PARCEL BOUNDARIES ARE APPROXIMATE.
- SOME SHAPEFILES OBTAINED FROM LABELLA ASSOCIATES, P.C. IN 2008/2009.
- INFORMATION SOURCES:
 - DATA SUMMARY PACKAGE - FORMER VACUUM OIL REFINERY SITE - 15 FLINT STREET, OCTOBER 2008, LABELLA ASSOCIATES, P.C.
 - SUBSURFACE INVESTIGATION SUMMARY REPORT, FORMER VACUUM OIL COMPANY REFINERY AREA, JANUARY 12, 2009, ROUX ASSOCIATES, INC.
 - PHASE I ENVIRONMENTAL SITE ASSESSMENTS 1, 13, 31, 69, AND 75 COTTAGE STREET; 100 RIVERVIEW PLACE; 102 VIOLETTA STREET; AND 1315 S. PLYMOUTH AVENUE; ROCHESTER, NEW YORK, DECEMBER 2012, O'BRIEN & GERE.
 - 2012 AERIAL IMAGERY OBTAINED FROM NYS GIS CLEARINGHOUSE.
- CLEARING OF VEGETATION AND TREES LESS THAN 12 INCHES IN DIAMETER WILL BE PERFORMED AS NECESSARY TO ACCESS PROPOSED SAMPLE LOCATIONS.
- ADDITIONAL SUBSURFACE SOIL SAMPLES WILL BE COLLECTED FROM SELECT GROUNDWATER MONITORING WELL INSTALLATION LOCATIONS (NOT DEPICTED).
- IF RECEIVED BY O'BRIEN & GERE, ADDITIONAL SAMPLE LOCATIONS AND ANALYTICAL DATA FOR BROWNFIELD OPPORTUNITY AREA (BOA) WORK BEING IMPLEMENTED BY THE CITY OF ROCHESTER IN THE FLINT STREET RIGHT-OF-WAY AND CITY-OWNED LAND NORTH OF FLINT STREET; AND THE 5 FLINT STREET/15 FLINT STREET REMEDIAL INVESTIGATION BEING PERFORMED BY OTHER ENTITIES WILL BE EVALUATED AND THE PROPOSED SAMPLE LOCATIONS DEPICTED HEREIN MAY BE MODIFIED IF WARRANTED.
- EXISTING MULTI-USE TRAIL SHAPEFILE PROVIDED BY GENESSEE TRANSPORTATION COUNCIL, LOCATED IN ROCHESTER, NEW YORK ON MAY 28, 2015.

FIGURE 7



INVESTIGATIVE DERIVED WASTE (IDW) IS PROPOSED TO BE STORED IN THIS LOCATION. TEMPORARY STAGING OF IDW MAY OCCUR ON OTHER AREAS OF THE SITE UNTIL A SUITABLE TIME TO TRANSPORT TO THE IDW AREA (I.E. 55-GALLON DRUMS STAGED ON PALLETS NEAR 1 OR MORE DECONTAMINATION AREAS; PURGE WATER STAGED IN DRUMS NEAR MONITORING WELLS, ETC.).

PERSONNEL AND VEHICULAR DECONTAMINATION AREA
(1 OR MORE DECONTAMINATION AREAS WILL ALSO BE SITUATED ON SITE AND LOCATIONS WILL BE DISCUSSED WITH THE NYSDEC PRIOR TO CONSTRUCTION)

LEGEND

HISTORIC ANALYTICAL RESULTS
ANALYTICAL RESULTS EXCEEDING PART 375 RESIDENTIAL SCOs

- METALS
- VOCs/SVOCs
- PESTICIDES

ANALYTICAL RESULTS DETECTED BELOW PART 375 RESIDENTIAL SCOs

- METALS
- VOCs/SVOCs
- PESTICIDES

PROPOSED SAMPLE LOCATIONS

- PROPOSED COMBINED SAMPLE LOCATION (SS, GW, SB AND/OR SV)
- PROPOSED SOIL BORING - 76
- PROPOSED SURFACE SOIL SAMPLE - 54
- PROPOSED TEST PIT - 52

OTHER FEATURES

- FORMER VACUUM OIL REFINERY (APPROXIMATE)
- NOT PART OF CITY OF ROCHESTER BROWNFIELD CLEANUP PROGRAM SITE. HOWEVER, THESE PARCELS ARE BEING INVESTIGATED BY OTHER ENTITIES.

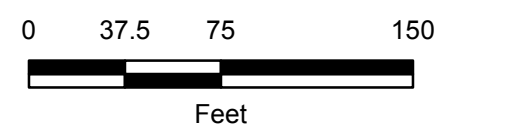
SITE FEATURES

- SOIL BORING
- RETAINING WALL
- SHALLOW FLOOR PIT
- RUBBLE AND OR TIRE PILE
- MOLTEN PLASTIC
- SEWAGE PIPE
- MANHOLE COVER
- CONCRETE BLOCKS
- MACHINERY
- FIRE HYDRANT
- FENCE POST
- REMNANTS OF CIRCULAR FOOTINGS
- CULVERT
- WALL FOUNDATION
- PIPING
- DRAINAGE SWALE
- CONCRETE STRUCTURE
- FORMER RAILROAD
- CIRCULAR RETAINING WALL
- WETLAND (NOT STATE NOR FEDERAL)
- CONCRETE PILLARS/FOOTERS
- APPROXIMATE FORMER BUILDING FOOTPRINT
- FORMER PUMPHOUSE LOCATION (1911/12 SANBORN MAP)

CITY OF ROCHESTER
BROWNFIELD CLEANUP PROGRAM
REMEDIAL INVESTIGATION WORK PLAN
PORTION OF FORMER VACUUM OIL REFINERY

1, 13, 31, 69, AND 75 COTTAGE STREET;
100 RIVERVIEW PLACE;
102 VIOLETTA STREET; AND PORTION OF
1320 S. PLYMOUTH AVENUE
ROCHESTER, NEW YORK

**HISTORIC SOILS DATA
AND PROPOSED
INVESTIGATIVE LOCATIONS
FOR SOILS**



SEPTEMBER 2015
11862.61157

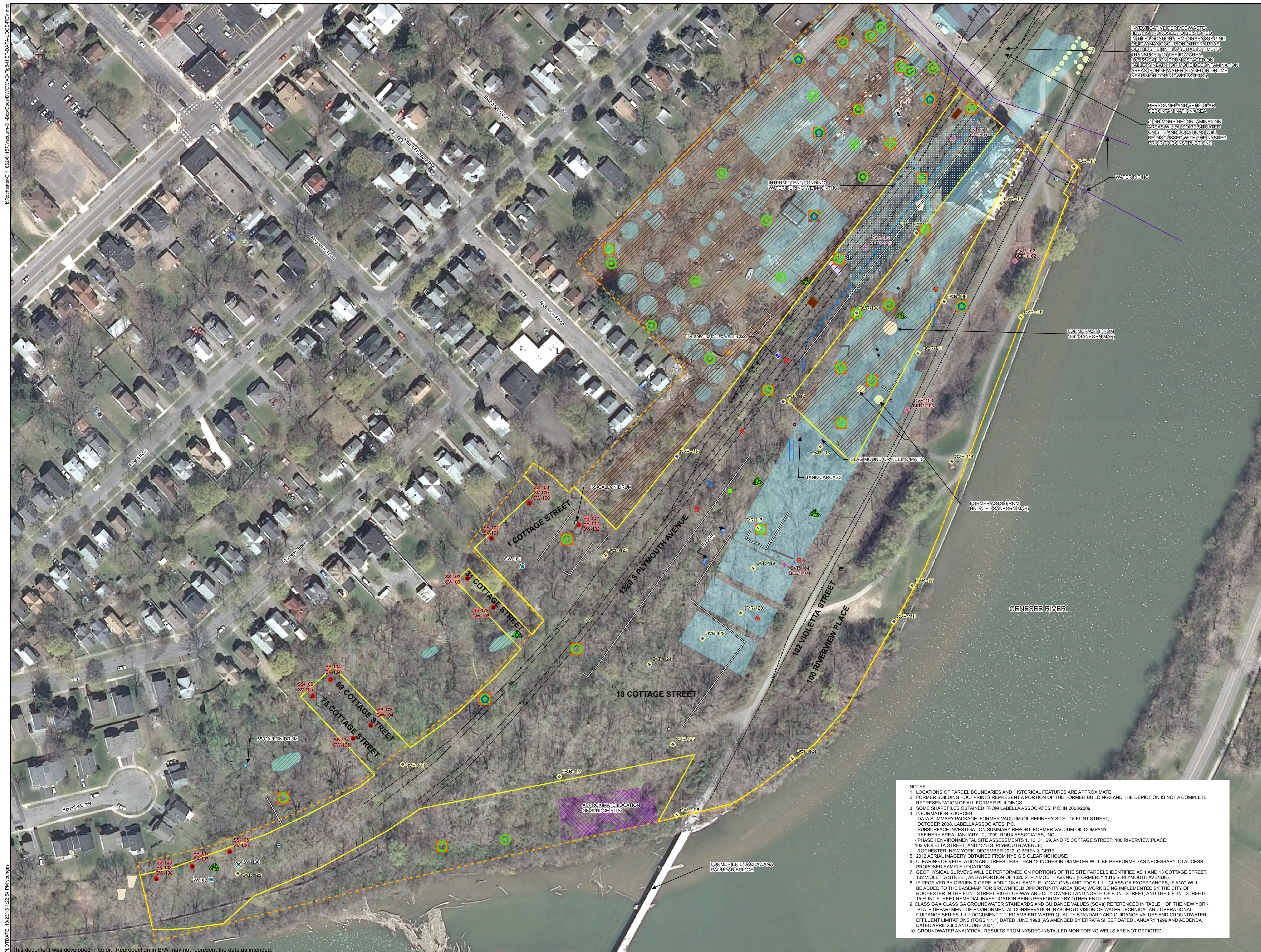


NOTES:

- LOCATIONS OF PARCEL BOUNDARIES AND HISTORICAL FEATURES ARE APPROXIMATE.
- FORMER BUILDING FOOTPRINTS REPRESENT A PORTION OF THE FORMER BUILDINGS AND THE DEPICTION IS NOT A COMPLETE REPRESENTATION OF ALL FORMER BUILDINGS.
- SOME SHAPEFILES OBTAINED FROM LABELLA ASSOCIATES, P.C. IN 2008/2009.
- INFORMATION SOURCES:
 - DATA SUMMARY PACKAGE, FORMER VACUUM OIL REFINERY SITE - 15 FLINT STREET, OCTOBER 2008, LABELLA ASSOCIATES, P.C.
 - SUBSURFACE INVESTIGATION SUMMARY REPORT, FORMER VACUUM OIL COMPANY REFINERY AREA, JANUARY 12, 2009, ROUX ASSOCIATES, INC.
 - PHASE I ENVIRONMENTAL SITE ASSESSMENTS, 1, 13, 31, 69, AND 75 COTTAGE STREET, 100 RIVERVIEW PLACE, 102 VIOLETTA STREET, AND 1315 S. PLYMOUTH AVENUE, ROCHESTER, NEW YORK, DECEMBER 2012, O'BRIEN & GERE.
- 2012 AERIAL IMAGERY OBTAINED FROM NYS GIS CLEARINGHOUSE.
- CLEARING OF VEGETATION AND TREES LESS THAN 12 INCHES IN DIAMETER WILL BE PERFORMED AS NECESSARY TO ACCESS PROPOSED SAMPLE LOCATIONS.
- GEOPHYSICAL SURVEYS WILL BE PERFORMED ON THE SITE PARCELS IDENTIFIED AS 1 AND 13 COTTAGE STREET, 102 VIOLETTA STREET, AND A PORTION OF 1320 S. PLYMOUTH AVENUE (FORMERLY 1315 S. PLYMOUTH AVENUE).
- ADDITIONAL SUBSURFACE SOIL SAMPLES WILL BE COLLECTED FROM SELECT GROUNDWATER MONITORING WELL INSTALLATION LOCATIONS (NOT DEPICTED).
- PART 375 SCOs = SOIL CLEANUP OBJECTIVES (SCOs) REFERENCED IN THE NEW YORK STATE DEPARTMENT OF ENVIRONMENTAL CONSERVATION (NYSDEC) GENERAL REMEDIAL PROGRAM REQUIREMENTS, PRESENTED IN THE NEW YORK STATE CODES, RULES AND REGULATIONS, TITLE 6, CHAPTER IV, SUBPART 375 (PART 375), RESIDENTIAL USE SCOs, TABLE 375-6.8(b).
- LOCATION AND SOIL ANALYTICAL RESULTS FROM NYSDEC-INSTALLED MONITORING WELLS ARE NOT DEPICTED.

I:\Rochester-C-11862\61157\Vacuum-Oil-Ref\Doc\DWG\MDFP7-HIST_SO_RESULTS.mxd
 PLOT DATE: 10/27/15 9:34:57 AM
 This document was developed in color. Reproduction in B/W may not represent the data as intended.

FIGURE 8



LEGEND

PROPOSED SAMPLE LOCATIONS

- GW-100: PROPOSED COMBINED SAMPLE LOCATION (SS, GW, SB AND/OR SV)
- SB-100: PROPOSED GROUNDWATER SAMPLE LOCATION
- GW-101: PROPOSED NESTED BEDROCK INTERFACE MONITORING WELL - 5
- OVR-101/BED-101: PROPOSED OVERBURDEN MONITORING WELL - 25
- OVR-106: PROPOSED OVERBURDEN MONITORING WELL - 25

ANALYTICAL RESULTS EXCEEDING CLASS GA

- METALS
- PCBs
- VOCs/SVOCs
- PESTICIDES

ANALYTICAL RESULTS DETECTED BELOW CLASS GA

- METALS
- PCBs
- VOCs/SVOCs
- PESTICIDES

SITE FEATURES

- MONITORING WELL
- TANK CARCASS
- RETAINING WALL
- SHALLOW FLOOR PIT
- RUBBLE AND OR TIRE PILE
- MOLTEN PLASTIC
- SEWAGE PIPE
- MANHOLE COVER
- CONCRETE BLOCKS
- MACHINERY
- FIRE HYDRANT
- FENCE POST
- REMNANTS OF CIRCULAR FOOTINGS
- CULVERT
- WALL FOUNDATION
- PIPING
- DRAINAGE SWALE
- CONCRETE STRUCTURE
- FORMER RAILROAD
- CIRCULAR RETAINING WALL
- WETLAND (NOT STATE NOR FEDERAL)
- CONCRETE PILLARS/FOOTERS
- APPROXIMATE FORMER BUILDING FOOTPRINT
- FORMER PUMPHOUSE LOCATION (1911/12 SANBORN MAP)
- NOT PART OF CITY OF ROCHESTER BROWNFIELD CLEANUP PROGRAM SITE, HOWEVER, THESE PARCELS ARE BEING INVESTIGATED BY OTHER ENTITIES
- FORMER VACUUM OIL REFINERY SITE (APPROXIMATE)
- BROWNFIELD CLEANUP PROGRAM SITE LIMITS (APPROXIMATELY 15.4 ACRES)

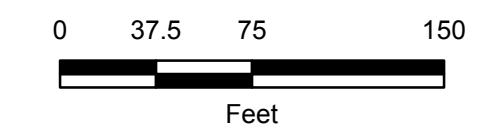
CITY OF ROCHESTER
 BROWNFIELD CLEANUP PROGRAM
 REMEDIAL INVESTIGATION WORK PLAN
 PORTION OF FORMER VACUUM OIL REFINERY

1, 13, 31, 69, AND 75 COTTAGE STREET;
 100 RIVERVIEW PLACE;
 102 VIOLETTA STREET; AND
 PORTION OF
 1320 S. PLYMOUTH AVENUE
 ROCHESTER, NEW YORK

HISTORIC GROUNDWATER DATA AND PROPOSED INVESTIGATIVE LOCATIONS FOR GROUNDWATER

NOTES:

- LOCATIONS OF PARCEL BOUNDARIES AND HISTORICAL FEATURES ARE APPROXIMATE.
- FORMER BUILDING FOOTPRINTS REPRESENT A PORTION OF THE FORMER BUILDINGS AND THE DEPICTION IS NOT A COMPLETE REPRESENTATION OF ALL FORMER BUILDINGS.
- SOME SHAPFILES OBTAINED FROM LABELLA ASSOCIATES, P.C. IN 2008/2009.
- INFORMATION SOURCES:
 - DATA SUMMARY PACKAGE, FORMER VACUUM OIL REFINERY SITE - 15 FLINT STREET, OCTOBER 2008, LABELLA ASSOCIATES, P.C.
 - SUBSURFACE INVESTIGATION SUMMARY REPORT, FORMER VACUUM OIL COMPANY REFINERY AREA, JANUARY 12, 2009, ROUX ASSOCIATES, INC.
 - PHASE I ENVIRONMENTAL SITE ASSESSMENTS 1, 13, 31, 69, AND 75 COTTAGE STREET; 100 RIVERVIEW PLACE; 102 VIOLETTA STREET; AND 1315 S. PLYMOUTH AVENUE; ROCHESTER, NEW YORK, DECEMBER 2012, O'BRIEN & GERE.
 - 2012 AERIAL IMAGERY OBTAINED FROM NYS GIS CLEARINGHOUSE.
- CLEARING OF VEGETATION AND TREES LESS THAN 12 INCHES IN DIAMETER WILL BE PERFORMED AS NECESSARY TO ACCESS PROPOSED SAMPLE LOCATIONS.
- GEOPHYSICAL SURVEYS WILL BE PERFORMED ON PORTIONS OF THE SITE PARCELS IDENTIFIED AS 1 AND 13 COTTAGE STREET, 102 VIOLETTA STREET, AND A PORTION OF 1320 S. PLYMOUTH AVENUE (FORMERLY 1315 S. PLYMOUTH AVENUE).
- IF RECEIVED BY O'BRIEN & GERE, ADDITIONAL SAMPLE LOCATIONS (AND TOGS 1:1 CLASS GA EXCEEDANCES, IF ANY) WILL BE ADDED TO THE BASEMAP FOR BROWNFIELD OPPORTUNITY AREA (BOA) WORK BEING IMPLEMENTED BY THE CITY OF ROCHESTER IN THE FLINT STREET RIGHT-OF-WAY AND CITY-OWNED LAND NORTH OF FLINT STREET; AND THE 5 FLINT STREET/ 15 FLINT STREET REMEDIAL INVESTIGATION BEING PERFORMED BY OTHER ENTITIES.
- CLASS GA = CLASS GA GROUNDWATER STANDARDS AND GUIDANCE VALUES (SGV) REFERENCED IN TABLE 1 OF THE NEW YORK STATE DEPARTMENT OF ENVIRONMENTAL CONSERVATION (NYSDEC) DIVISION OF WATER TECHNICAL AND OPERATIONAL GUIDANCE SERIES 1.1.1 DOCUMENT TITLED AMBIENT WATER QUALITY STANDARD AND GUIDANCE VALUES AND GROUNDWATER EFFLUENT LIMITATIONS (TOGS 1:1.1) DATED JUNE 1998 (AS AMENDED BY ERRATA SHEET DATED JANUARY 1999 AND ADDENDA DATED APRIL 2000 AND JUNE 2004).
- GROUNDWATER ANALYTICAL RESULTS FROM NYSDEC-INSTALLED MONITORING WELLS ARE NOT DEPICTED.



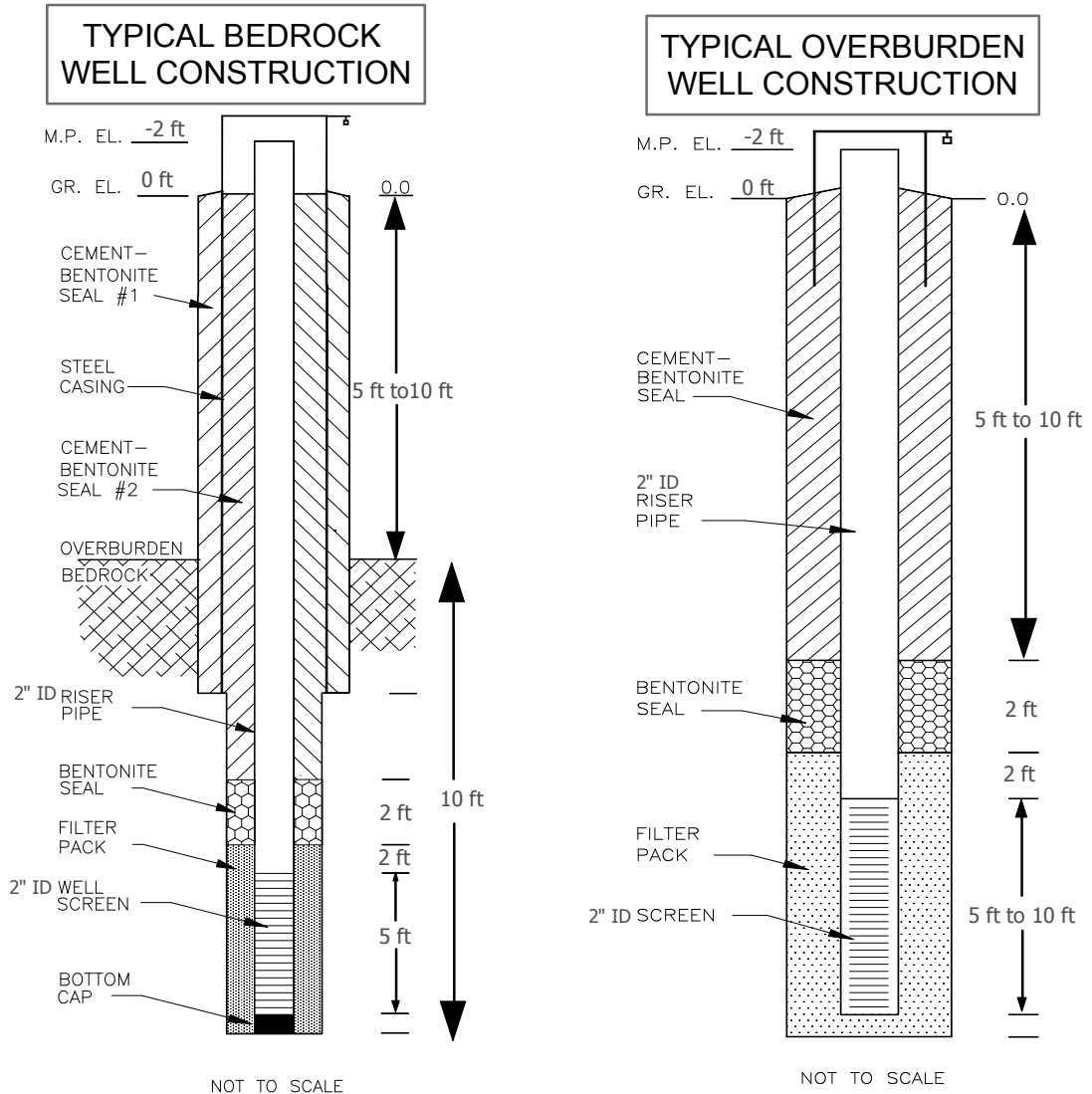
OCTOBER 2015
 11862.81157



I:\Rochester_C1186281157_Vacuum_Oil_Ref\Drawings\DWG\MXD\Fig-8-HIST-DATA-DCS-REV.mxd

PLOT DATE: 10/23/15 1:43:36 PM youngas

I:\Rochester-C\11862161157_Vacuum-Oil-Bcp\Docs\DWG\MXD\Figs-well_construction_diagrams.mxd



NOTES:

1. LENGTHS OF OVERBURDEN WELL SCREENS WILL BE EVALUATED IN THE FIELD.
2. LENGTHS OF DEPICTED PVC RISERS ARE APPROXIMATE.

BROWNFIELD CLEANUP PROGRAM
REMEDIAL INVESTIGATION WORK PLAN
CITY OF ROCHESTER
PORTION OF FORMER VACUUM OIL REFINERY

WELL CONSTRUCTION DIAGRAMS

