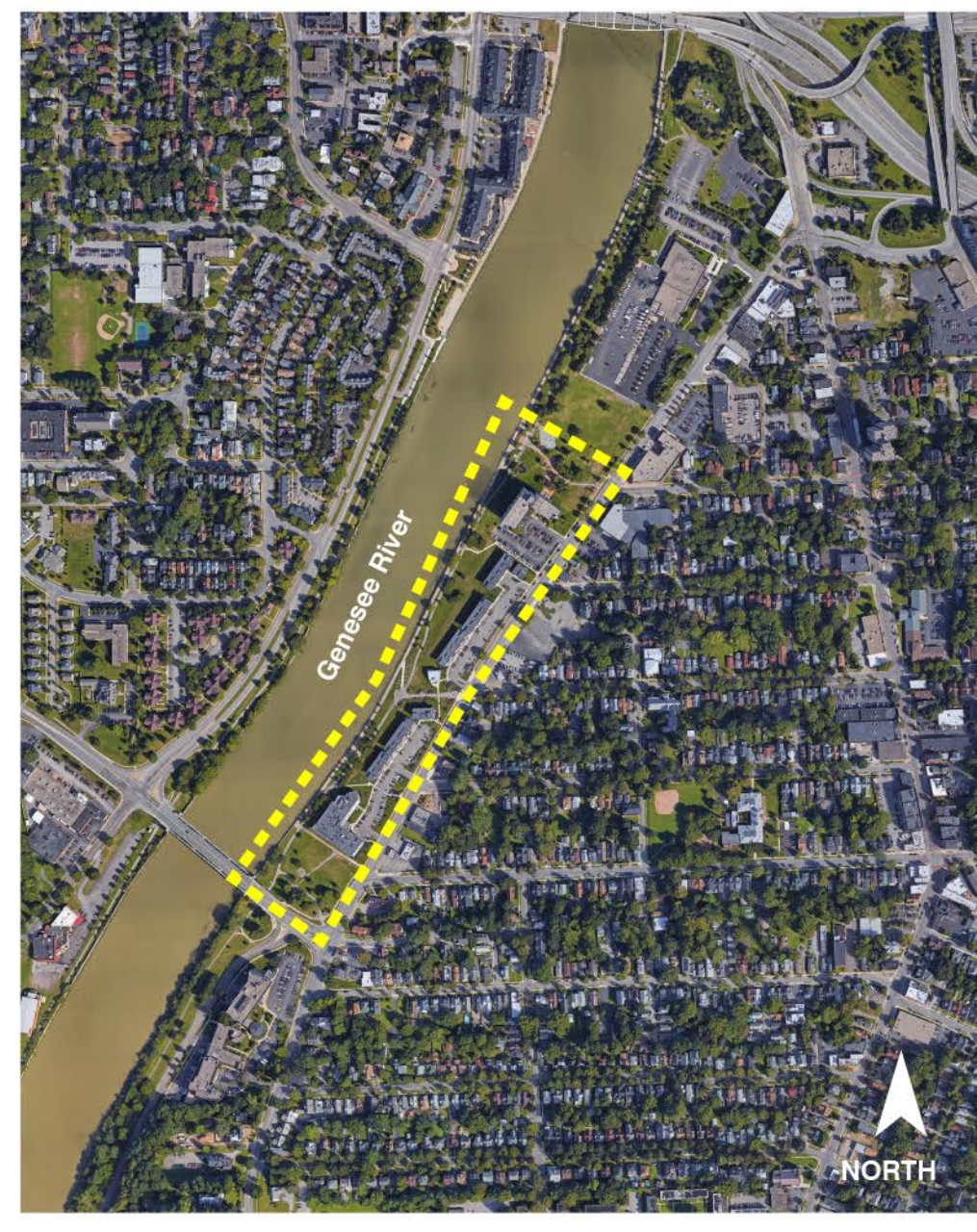
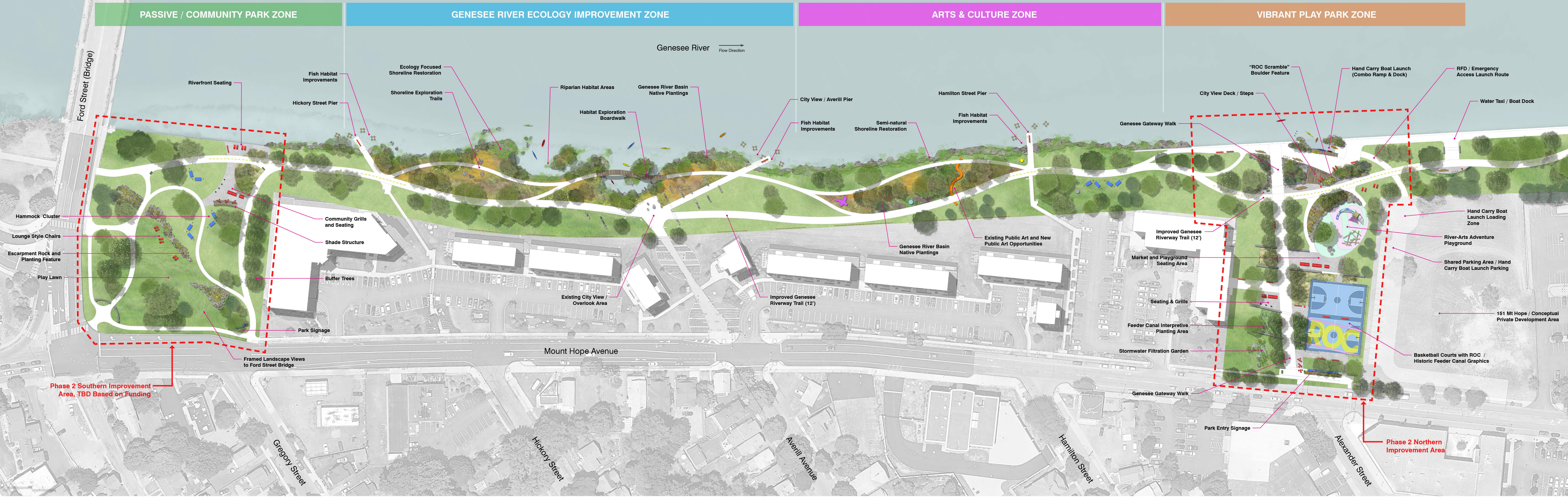
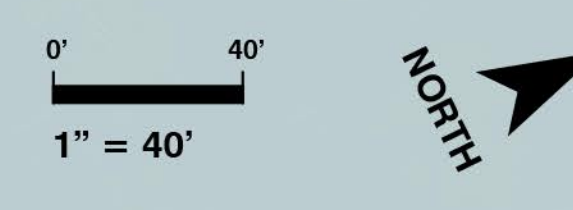


Genesee Gateway Park (Erie Harbor Enhancements Phase 2)



Master Plan Project Location

Master Plan

This overall **MASTER PLAN** represents a **long term vision** for the redevelopment of the park to create a vibrant, playful, urban waterfront experience. The re-imagined park will create a space which visually and physically connects the river to the surrounding neighborhoods. Areas for respite, flexible uses, and everyday play will ensure this is a riverfront park that offers something for all age ranges. The redeveloped park will also provide critical access to the river for non-motorized and landing points for motorized watercraft.

Phase 2 Improvement Areas

The identified **IMPROVEMENT AREAS** will be redeveloped with already committed construction funding provided by the NYS Department of State under Title 11 of the Environmental Protection Fund and through the ROC the Riverway initiative. Construction is anticipated to begin in 2021. Implementation of the remaining Master Plan recommendations will be dependent upon future funding.



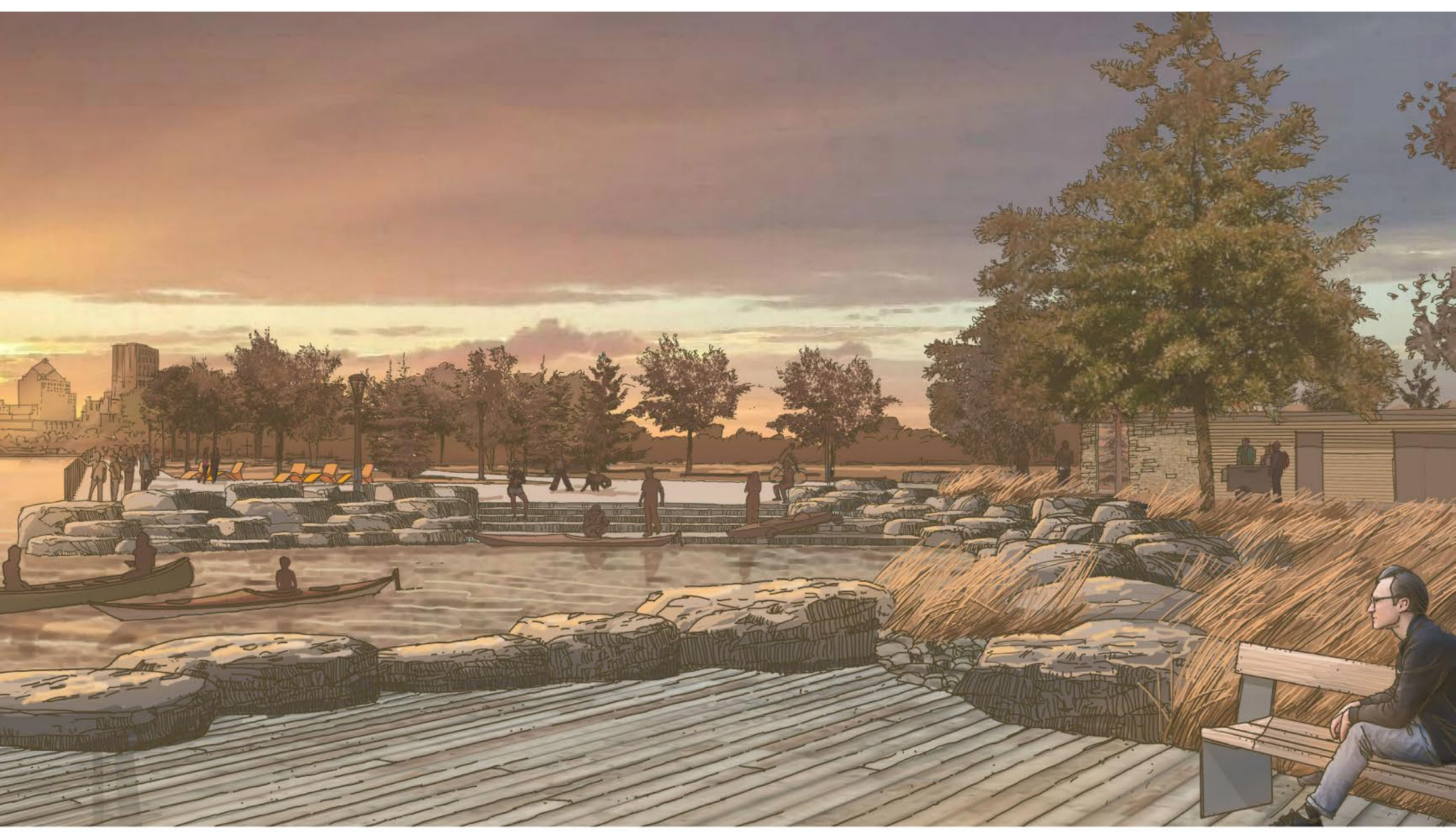
Character Sketch of Passive Community Park Zone



Character Sketch of Passive Community Park Zone



Character Sketch of Vibrant Play Park Zone



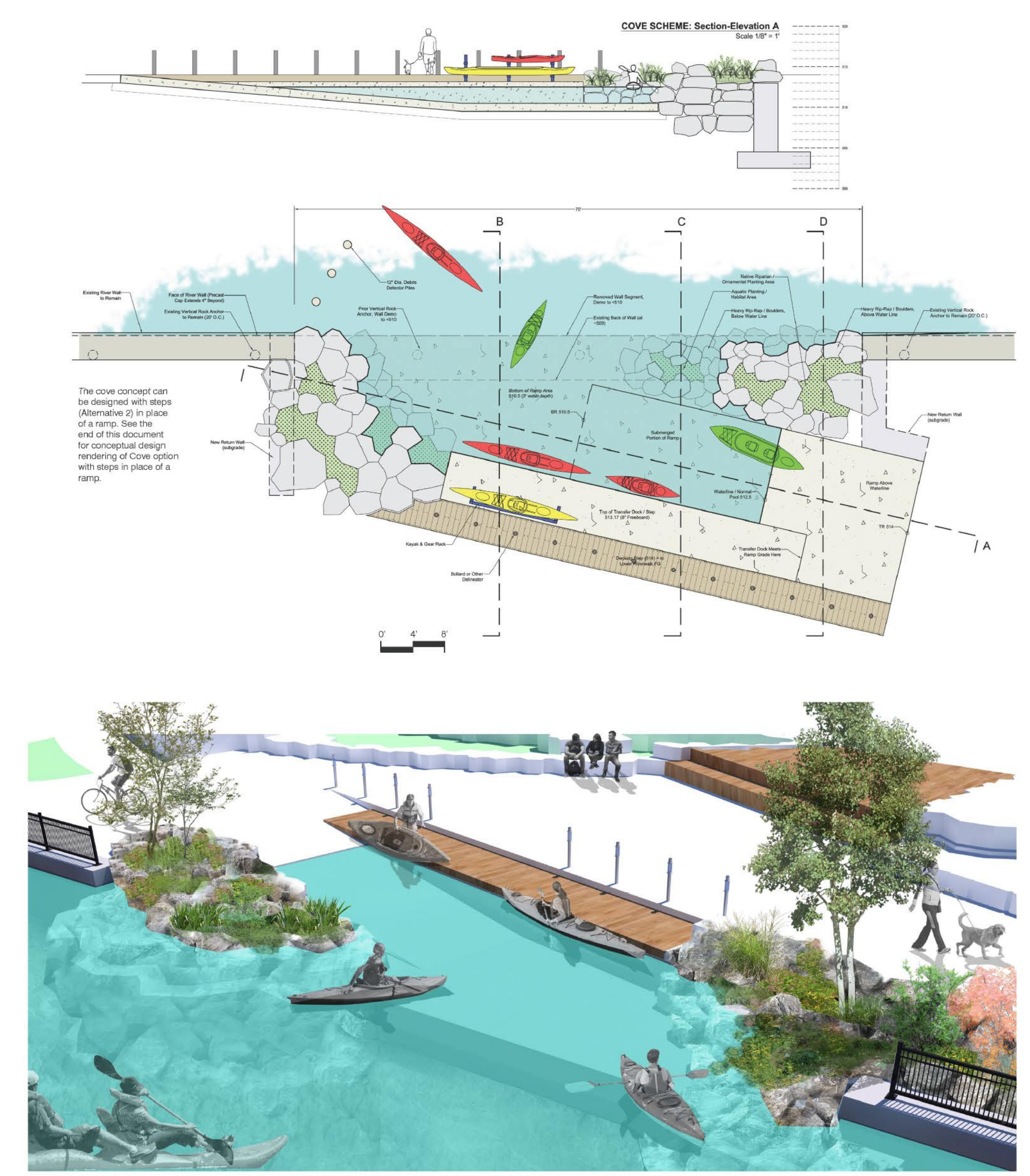
Character Sketch of Vibrant Play Park Zone

Genesee Gateway Park: Master Plan

A long term vision for Genesee Gateway Park.

This document was prepared with funding provided by the New York State Department of State under Title 11 of the Environmental Protection Fund.



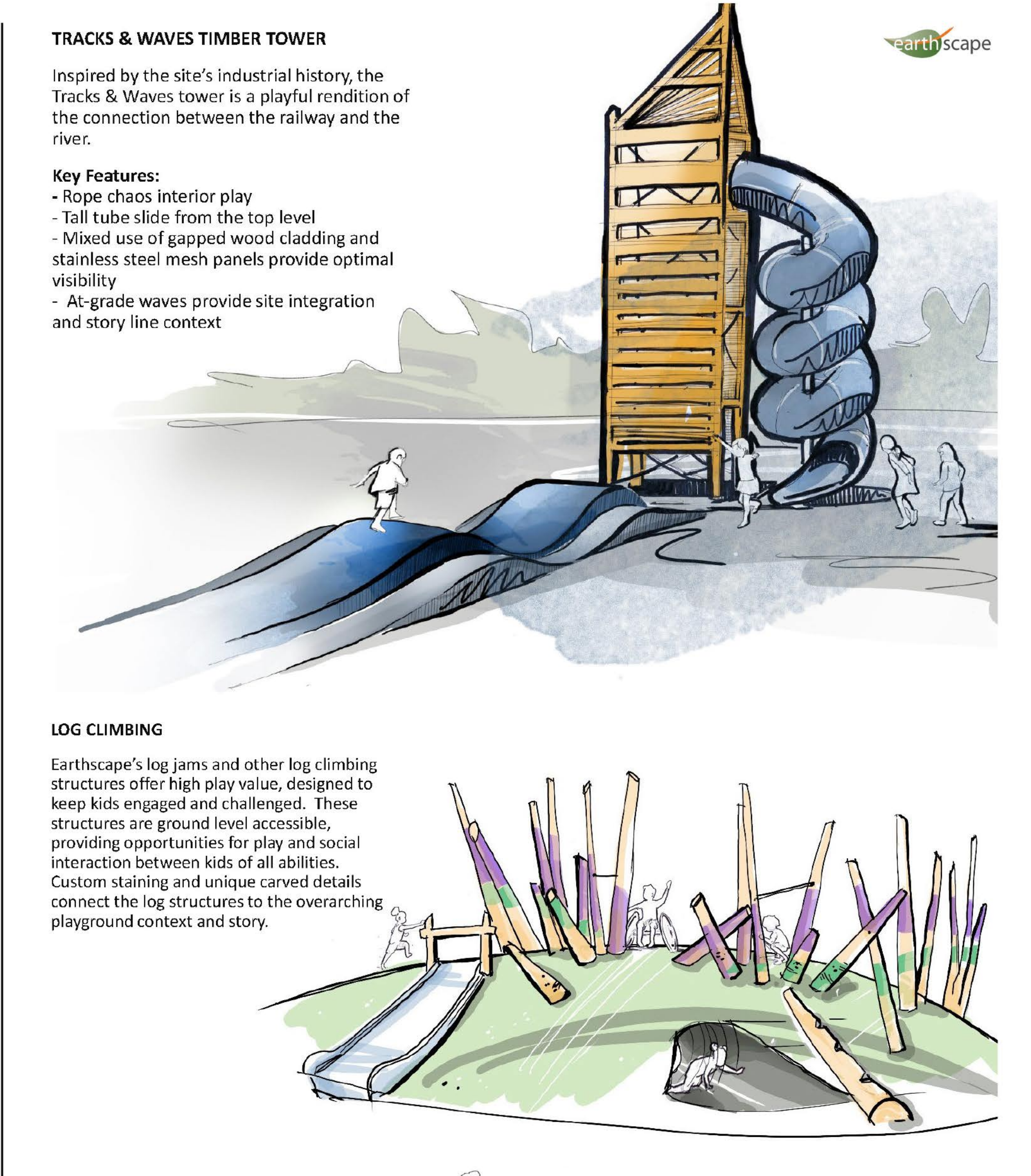


Hand-Carry Boat Launch Concept

The existing river wall will be modified to include a fixed and permanent hand-carry boat launch. The concept includes both a small ramp and a traditional dock with ideal freeboard height to support many user types and increase public access to the Genesee River. The design proposes to include native riparian planting pockets to provide a naturalistic and interesting user experience. It also allows the launch of Rochester Fire Department inflatable rescue craft to enhance emergency response on this portion of the river.

Southern Improvement Area

The southern Phase 2 improvement area focuses on passive community park use as desired by public input received to-date. Existing qualities of the site are retained and new trail, seating, landscape, and visual buffering enhancements will be made. A small community gathering area includes grilling and seating opportunities. The extent of improvements made during Phase 2 construction will be based on available funding.



Playground Concept



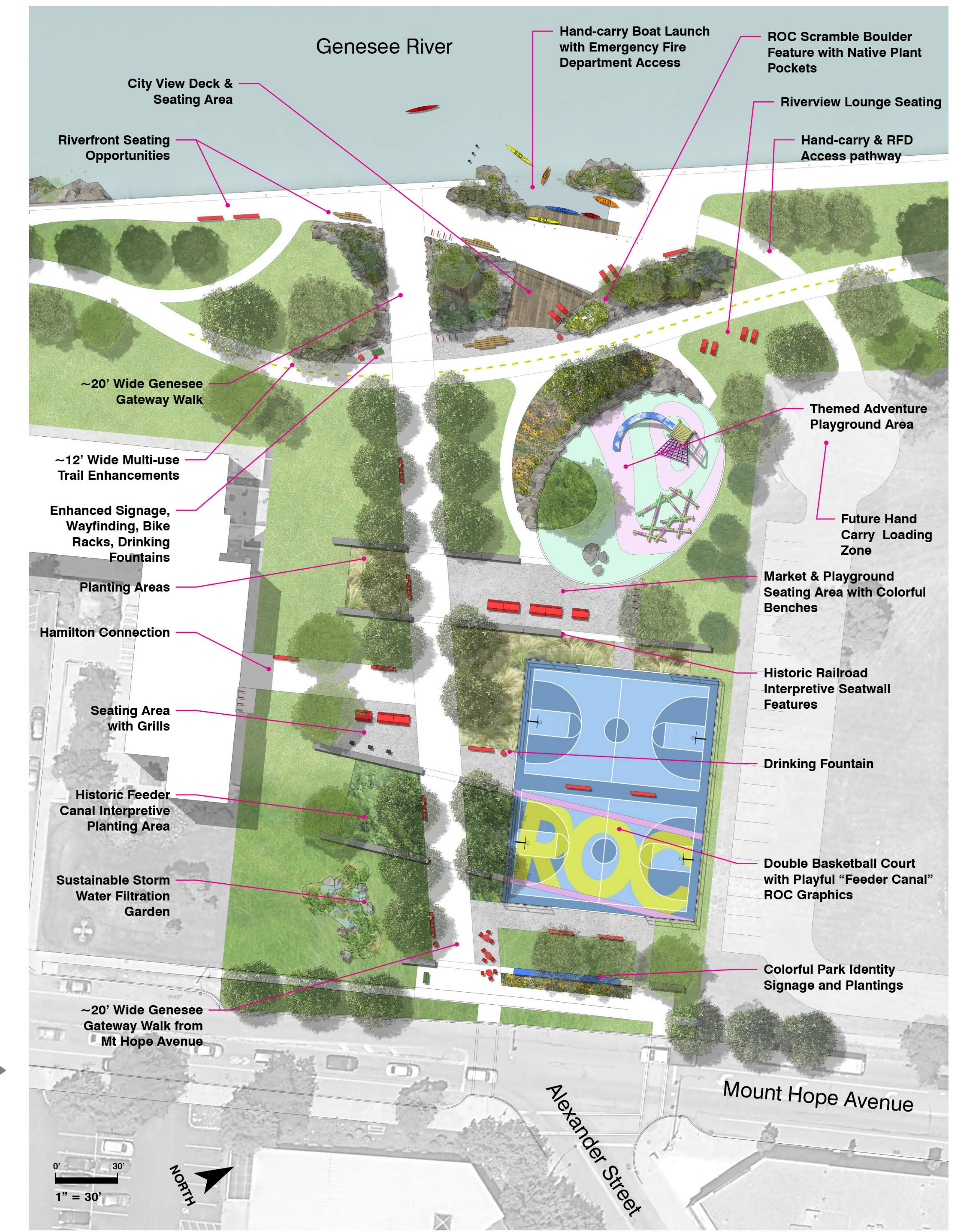
Character Images

These images show design precedents and the visual character for the proposed Phase 2 improvements. They are based on the project community preference surveys completed in 2017 and 2018.



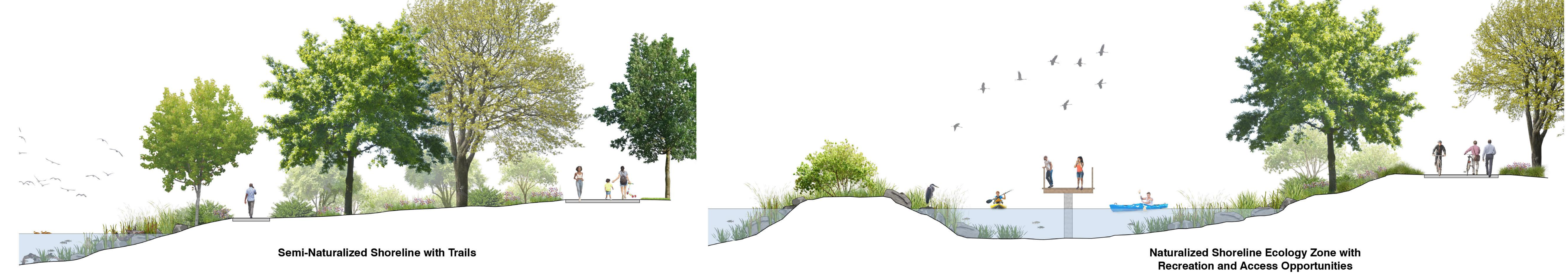
Northern Improvement Area

The northern Phase 2 improvement area focuses on vibrant play opportunities and the ROC THE RIVERWAY objectives of celebrating our past while building a world-class recreational corridor. The park enhancements provide more direct physical and visual access to the river and include creative play opportunities that celebrate the site's significant industrial history. The proposed features build on the success of Phase 1 (nearby access easements completed in 2012) and include the most desired program elements from public input received to-date. The park aims to provide truly great public spaces, bicycle and pedestrian focused infrastructure, and water-oriented recreational opportunities.



Typical Phase 2 Trail Sections

These sections show scale and characteristics of various proposed trails. The project establishes a clear hierarchy of trails that helps wayfinding and supports many varied users. These include multi-use / commuter through-trails, exploration trails that lead users to interesting places and waterfront experiences, and wide promenades that serve as gateways between the river and community.



Future Master Plan River Ecology Improvements

These sections present river shoreline improvements and trail relationships that are based on the long-range master plan and may be completed in the future. The goal is to enhance our community's relationship with the Genesee River, promote a more healthy river ecology, and increase our environmental literacy by providing meaningful access to nature. Future improvements to be determined based on additional study.