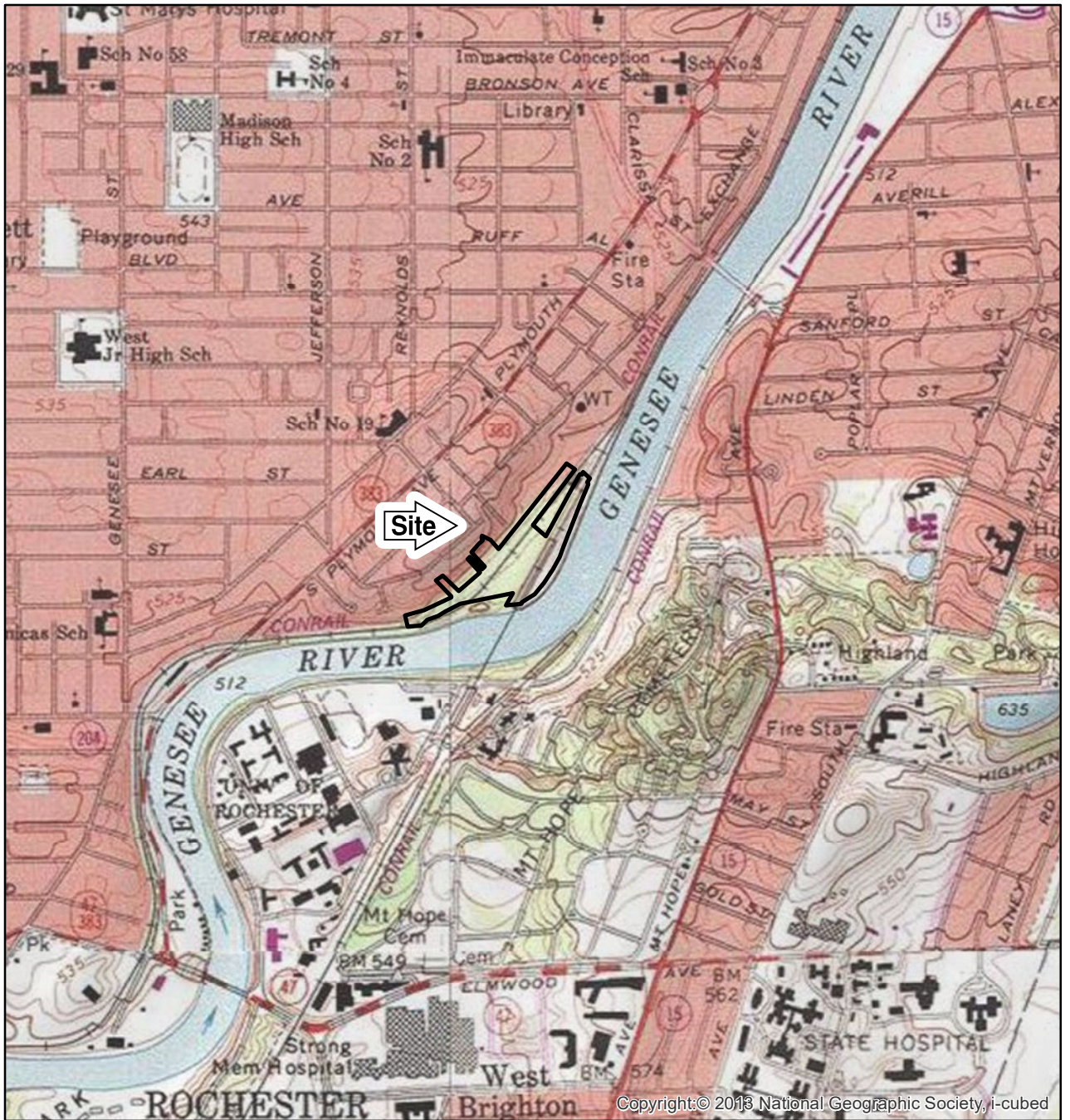




Figures

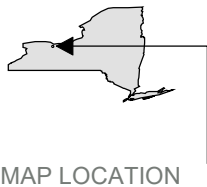
4/18/2018 1:38:26 PM

I:\Rochester-C.11862\61157.Vacuum-Oil-Bcp\Docs\DWG\MXD\RIR_2017\Fig1-SITELoc-rev-2017.mxd



ADAPTED FROM: ROCHESTER EAST USGS QUADRANGLE

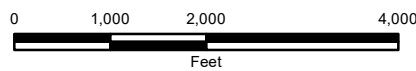
BROWNFIELD CLEANUP PROGRAM
 REMEDIAL INVESTIGATION
 CITY OF ROCHESTER
 PORTION OF FORMER VACUUM OIL
 REFINERY
 ROCHESTER, NEW YORK



MAP LOCATION



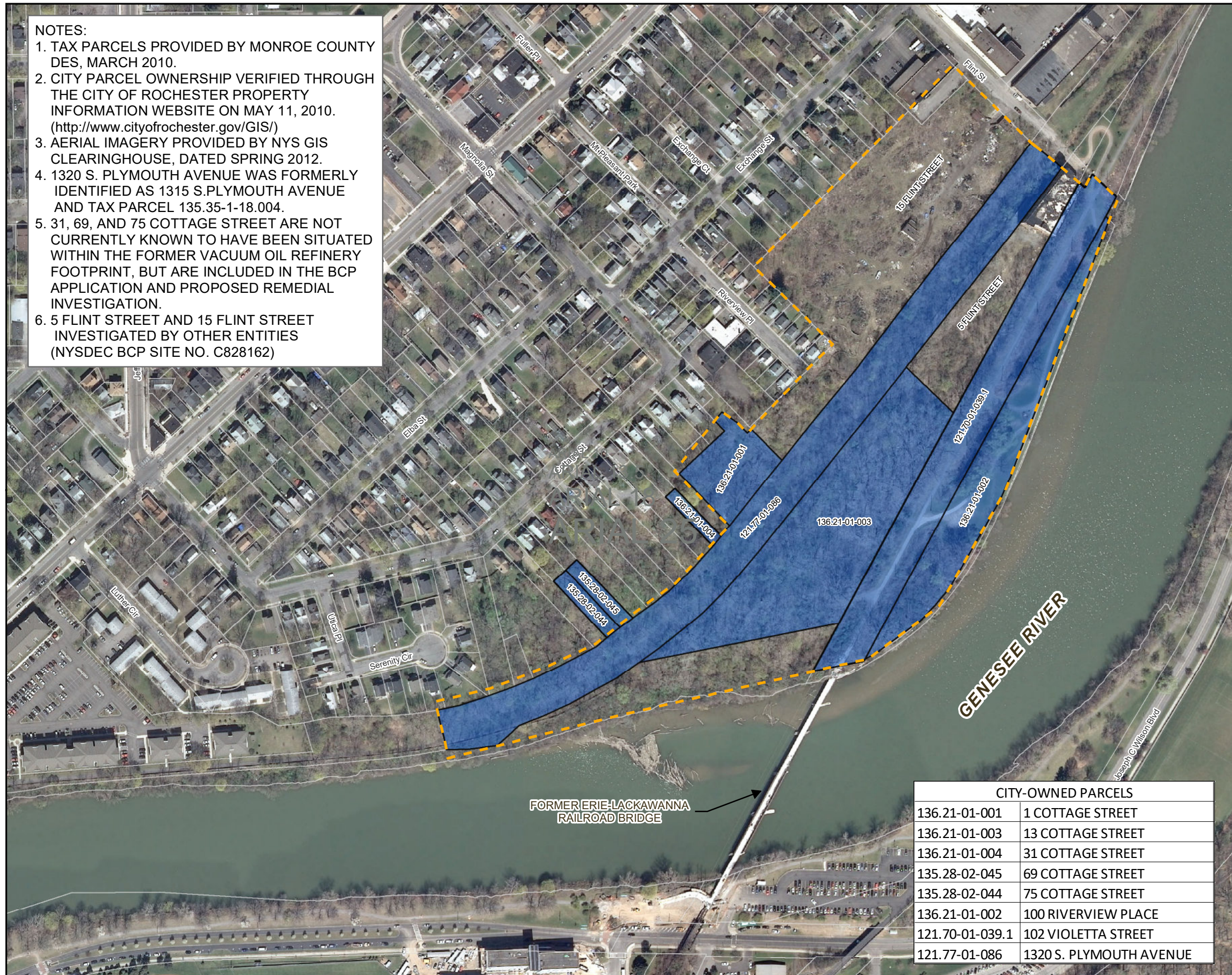
SITE LOCATION



1:24,000



O'BRIEN & GERE ENGINEERS, INC.



- NOTES:**
1. TAX PARCELS PROVIDED BY MONROE COUNTY DES, MARCH 2010.
 2. CITY PARCEL OWNERSHIP VERIFIED THROUGH THE CITY OF ROCHESTER PROPERTY INFORMATION WEBSITE ON MAY 11, 2010. (<http://www.cityofrochester.gov/GIS/>)
 3. AERIAL IMAGERY PROVIDED BY NYS GIS CLEARINGHOUSE, DATED SPRING 2012.
 4. 1320 S. PLYMOUTH AVENUE WAS FORMERLY IDENTIFIED AS 1315 S.PLYMOUTH AVENUE AND TAX PARCEL 135.35-1-18.004.
 5. 31, 69, AND 75 COTTAGE STREET ARE NOT CURRENTLY KNOWN TO HAVE BEEN SITUATED WITHIN THE FORMER VACUUM OIL REFINERY FOOTPRINT, BUT ARE INCLUDED IN THE BCP APPLICATION AND PROPOSED REMEDIAL INVESTIGATION.
 6. 5 FLINT STREET AND 15 FLINT STREET INVESTIGATED BY OTHER ENTITIES (NYSDEC BCP SITE NO. C828162)



LEGEND

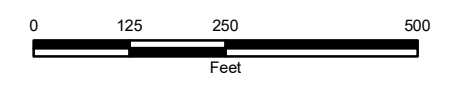
- FORMER VACUUM OIL REFINERY (APPROXIMATE)
- BROWNFIELD CLEANUP PROGRAM SITE LIMITS (APPROXIMATELY 15.4 ACRES)

**BROWNFIELD CLEANUP PROGRAM
REMEDIAL INVESTIGATION REPORT
PORTION OF FORMER VACUUM OIL REFINERY**

1, 13, 31, 69, AND 75 COTTAGE STREET;
100 RIVERVIEW PLACE;
102 VIOLETTA STREET;
AND PORTION OF
1320 S. PLYMOUTH AVENUE
ROCHESTER, NEW YORK

SITE DETAIL

CITY-OWNED PARCELS	
136.21-01-001	1 COTTAGE STREET
136.21-01-003	13 COTTAGE STREET
136.21-01-004	31 COTTAGE STREET
135.28-02-045	69 COTTAGE STREET
135.28-02-044	75 COTTAGE STREET
136.21-01-002	100 RIVERVIEW PLACE
121.70-01-039.1	102 VIOLETTA STREET
121.77-01-086	1320 S. PLYMOUTH AVENUE



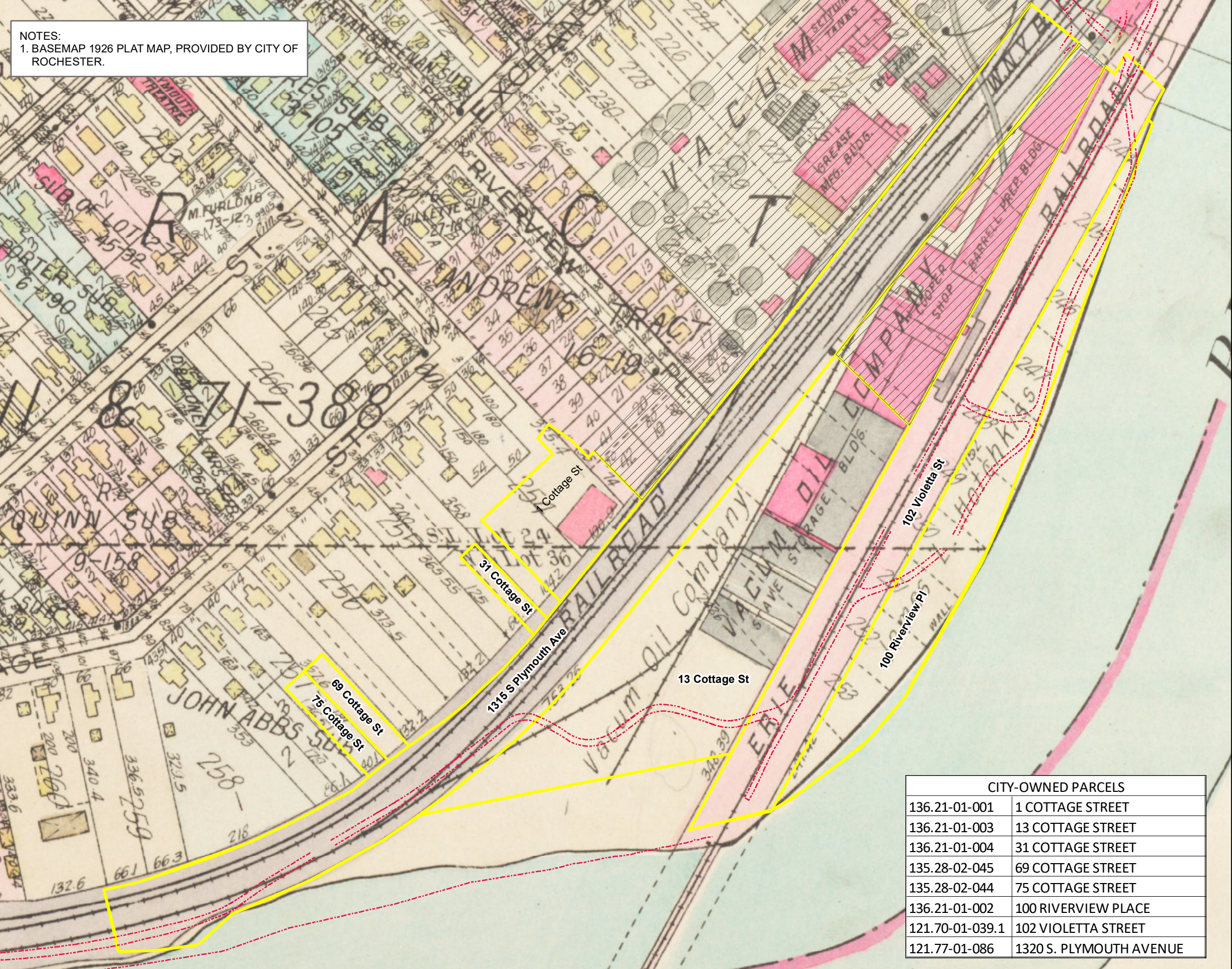
FILE_NO.11862.61157
OCTOBER 2019



O'BRIEN & GERE ENGINEERS, INC.

4/18/2018 12:58:47 PM

I:\Rochester-C_11862\61157_Vacuum-Oil-Bcp\Docs\DWG\MXD\DIR_2017\FIG3-HISTORIC.mxd



NOTES:
1. BASEMAP 1926 PLAT MAP, PROVIDED BY CITY OF ROCHESTER.



LEGEND

- BROWNFIELD CLEANUP PROGRAM SITE LIMITS (APPROXIMATELY 15.4 ACRES)
- BIKE PATH
- NOT PART OF CITY OF ROCHESTER BROWNFIELD CLEANUP PROGRAM SITE; HOWEVER, THESE PARCELS WERE INVESTIGATED BY OTHER ENTITIES.

CITY OF ROCHESTER
BROWNFIELD CLEANUP PROGRAM
REMEDIAL INVESTIGATION
REPORT
PORTION OF FORMER VACUUM OIL
REFINERY

1, 13, 31, 69, AND 75 COTTAGE STREET;
100 RIVERVIEW PLACE;
102 VIOLETTA STREET; AND PORTION OF
1320 S. PLYMOUTH AVENUE
ROCHESTER, NEW YORK

HISTORIC VACUUM OIL
OVERVIEW
(INCLUDING 1926 PLAT MAP)

CITY-OWNED PARCELS	
136.21-01-001	1 COTTAGE STREET
136.21-01-003	13 COTTAGE STREET
136.21-01-004	31 COTTAGE STREET
135.28-02-045	69 COTTAGE STREET
135.28-02-044	75 COTTAGE STREET
136.21-01-002	100 RIVERVIEW PLACE
121.70-01-039.1	102 VIOLETTA STREET
121.77-01-086	1320 S. PLYMOUTH AVENUE



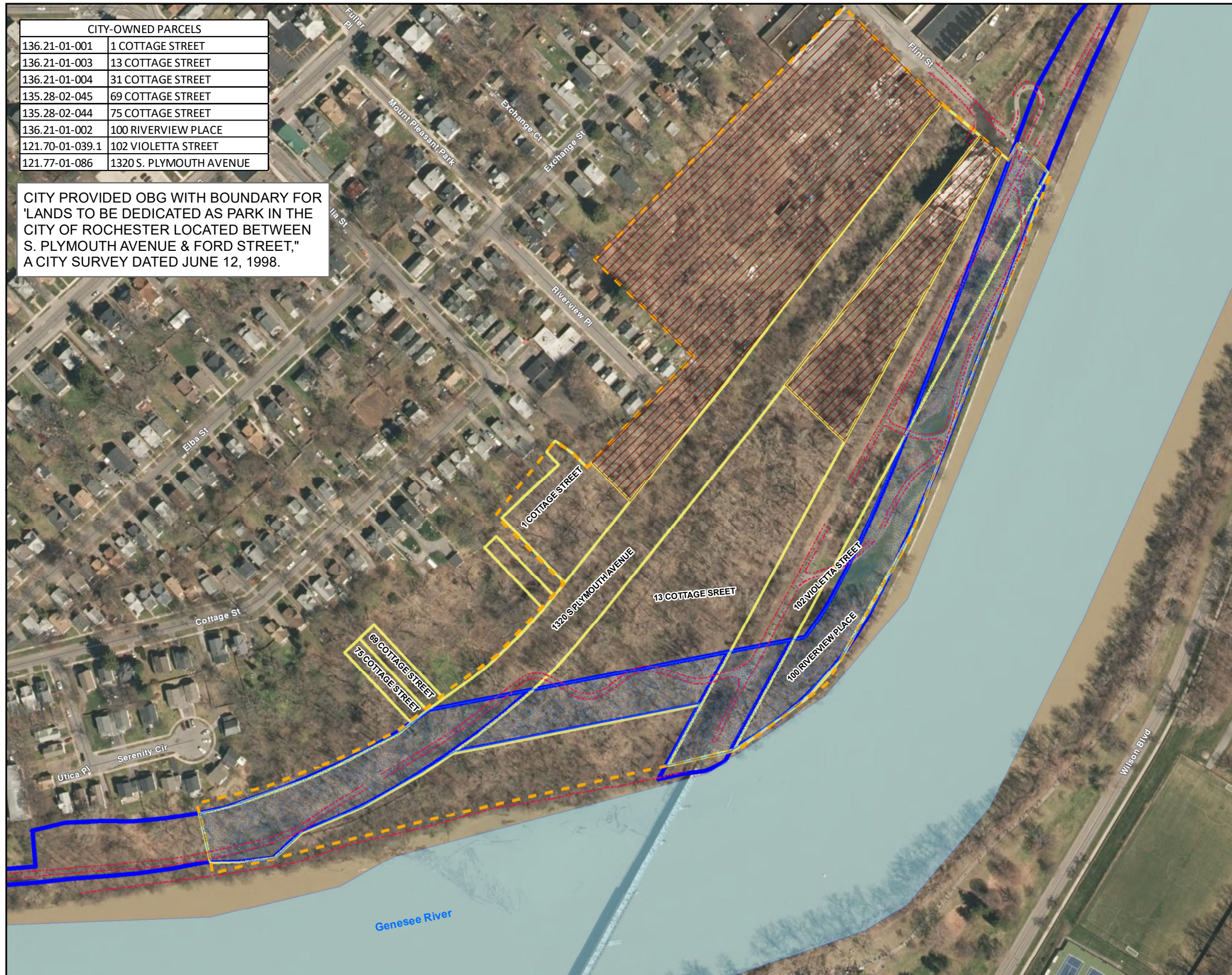
FILE NO.11862.61157
OCTOBER 2019



O'BRIEN & GERE ENGINEERS, INC.

2/9/2018 7:06:24 PM

I:\Rochester-C.11862\61157.Vacuum-Oil-Bcp\Docs\DWG\MXD\Change_In_Use_2018_February_REV1.mxd



CITY-OWNED PARCELS	
136.21-01-001	1 COTTAGE STREET
136.21-01-003	13 COTTAGE STREET
136.21-01-004	31 COTTAGE STREET
135.28-02-045	69 COTTAGE STREET
135.28-02-044	75 COTTAGE STREET
136.21-01-002	100 RIVERVIEW PLACE
121.70-01-039.1	102 VIOLETTA STREET
121.77-01-086	1320 S. PLYMOUTH AVENUE

CITY PROVIDED OBG WITH BOUNDARY FOR 'LANDS TO BE DEDICATED AS PARK IN THE CITY OF ROCHESTER LOCATED BETWEEN S. PLYMOUTH AVENUE & FORD STREET," A CITY SURVEY DATED JUNE 12, 1998.



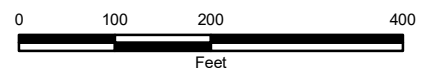
LEGEND

- CHANGE IN USE AREA (7.7613 ACRES)
- CHANGE IN USE AREA (5.27 ACRES WITHIN BCP AREA)
- BIKE PATH
- 5 & 15 FLINT STREET ARE NOT PART OF CITY OF ROCHESTER BCP SITE; HOWEVER, THESE PARCELS ARE BEING INVESTIGATED BY OTHER ENTITIES UNDER NYSDEC BCP SITE No. C828162.
- FORMER VACUUM OIL REFINERY SITE (APPROXIMATE)
- CITY BROWNFIELD CLEANUP PROGRAM SITE LIMITS (APPROXIMATELY 15.4 ACRES). NYSDEC BCP SITE No. C828190

CITY OF ROCHESTER
BROWNFIELD CLEANUP PROGRAM
REMEDIAL INVESTIGATION
REPORT
PORTION OF FORMER VACUUM OIL
REFINERY

1, 13, 31, 69, AND 75 COTTAGE STREET;
100 RIVERVIEW PLACE;
102 VIOLETTA STREET; AND PORTION OF
1320 S. PLYMOUTH AVENUE
ROCHESTER, NEW YORK

PROPOSED PARKLAND

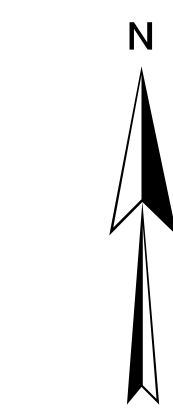


11862.61157
OCTOBER 2019



O'BRIEN & GERE ENGINEERS, INC.

FIGURE 4



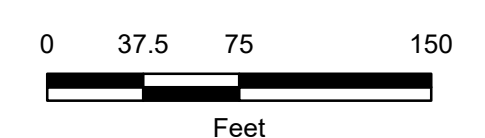
LEGEND

- SAMPLE LOCATION TYPE**
- BED1-100 BEDROCK WELL
 - OVR-106 OVERBURDEN MONITORING WELL
 - TP-149 TEST PIT
 - SB-100 SOIL BORING
 - SS-100 SURFACE SOIL
 - SV-100 SOIL VAPOR
- SITE FEATURES**
- MANHOLE COVER
 - BIKE PATH
 - DELINEATED WETLANDS (BY OTHERS)
 - BROWNFIELD CLEANUP PROGRAM SITE LIMITS (APPROXIMATELY 15.4 ACRES)
 - FORMER VACUUM OIL REFINERY SITE (APPROXIMATE)
 - NOT PART OF CITY OF ROCHESTER BROWNFIELD CLEANUP PROGRAM SITE; HOWEVER, THESE PARCELS ARE BEING INVESTIGATED BY OTHER ENTITIES.
 - TANK CARCASS
 - RETAINING WALL
 - SLAG MOUND OR REEL-O-MATIC
 - SHALLOW FLOOR PIT
 - RUBBLE AND OR TIRE PILE
 - MOLTEN PLASTIC
 - SEWAGE PIPE
 - CONCRETE BLOCKS
 - MACHINERY
 - FIRE HYDRANT
 - FENCE POST
 - 55 GALLON DRUM
 - REMNANTS OF CIRCULAR FOOTINGS
 - CULVERT
 - WALL FOUNDATION
 - PIPING
 - DRAINAGE SWALE
 - CONCRETE STRUCTURE
 - WATER PIPE

CITY OF ROCHESTER
BROWNFIELD CLEANUP PROGRAM
REMEDIATION INVESTIGATION REPORT
PORTION OF FORMER VACUUM OIL REFINERY

1, 13, 31, 69, AND 75 COTTAGE STREET;
100 RIVERVIEW PLACE;
102 VIOLETTA STREET; AND PORTION OF
1320 S. PLYMOUTH AVENUE
ROCHESTER, NEW YORK

CITY-OWNED PARCELS	
136.21-01-001	1 COTTAGE STREET
136.21-01-003	13 COTTAGE STREET
136.21-01-004	31 COTTAGE STREET
135.28-02-045	69 COTTAGE STREET
135.28-02-044	75 COTTAGE STREET
136.21-01-002	100 RIVERVIEW PLACE
121.70-01-039.1	102 VIOLETTA STREET
121.77-01-086	1320 S. PLYMOUTH AVENUE

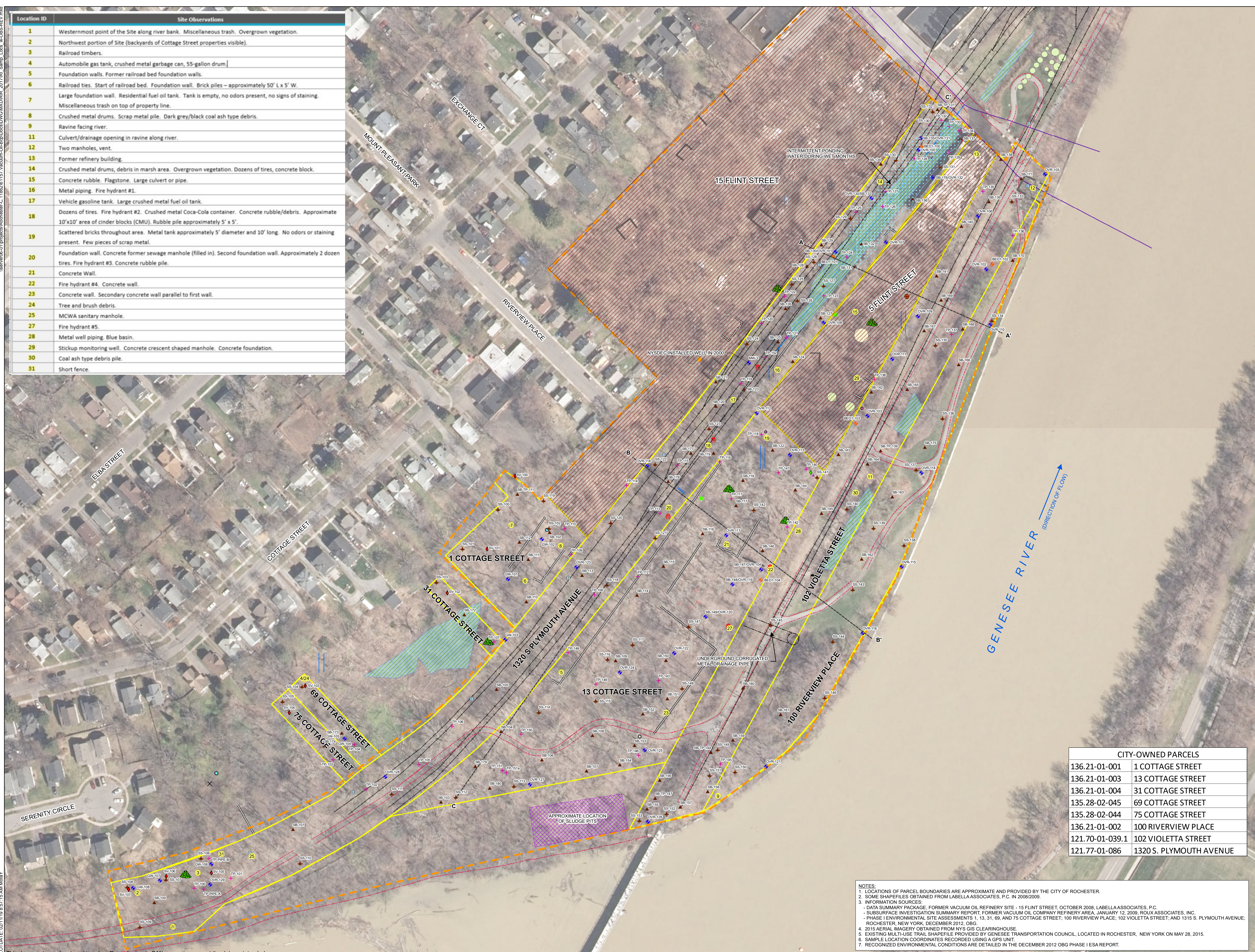


OCTOBER 2019
11862.61157



O'BRIEN & GERE ENGINEERS, INC.

Location ID	Site Observations
1	Westernmost point of the Site along river bank. Miscellaneous trash. Overgrown vegetation.
2	Northwest portion of Site (backyards of Cottage Street properties visible).
3	Railroad timbers.
4	Automobile gas tank, crushed metal garbage can, 55-gallon drum.
5	Foundation walls. Former railroad bed foundation walls.
6	Railroad ties. Start of railroad bed. Foundation wall. Brick piles – approximately 50' L x 5' W.
7	Large foundation wall. Residential fuel oil tank. Tank is empty, no odors present, no signs of staining. Miscellaneous trash on top of property line.
8	Crushed metal drums. Scrap metal pile. Dark grey/black coal ash type debris.
9	Ravine facing river.
11	Culvert/drainage opening in ravine along river.
12	Two manholes, vent.
13	Former refinery building.
14	Crushed metal drums, debris in marsh area. Overgrown vegetation. Dozens of tires, concrete block.
15	Concrete rubble. Flagstone. Large culvert or pipe.
16	Metal piping. Fire hydrant #1.
17	Vehicle gasoline tank. Large crushed metal fuel oil tank.
18	Dozens of tires. Fire hydrant #2. Crushed metal Coca-Cola container. Concrete rubble/debris. Approximate 10'x10' area of cinder blocks (CMU). Rubble pile approximately 5' x 5'.
19	Scattered bricks throughout area. Metal tank approximately 5' diameter and 10' long. No odors or staining present. Few pieces of scrap metal.
20	Foundation wall. Concrete former sewage manhole (filled in). Second foundation wall. Approximately 2 dozen tires. Fire hydrant #3. Concrete rubble pile.
21	Concrete Wall.
22	Fire hydrant #4. Concrete wall.
23	Concrete wall. Secondary concrete wall parallel to first wall.
24	Tree and brush debris.
25	MCWA sanitary manhole.
27	Fire hydrant #5.
28	Metal well piping. Blue basin.
29	Stickup monitoring well. Concrete crescent shaped manhole. Concrete foundation.
30	Coal ash type debris pile.
31	Short fence.

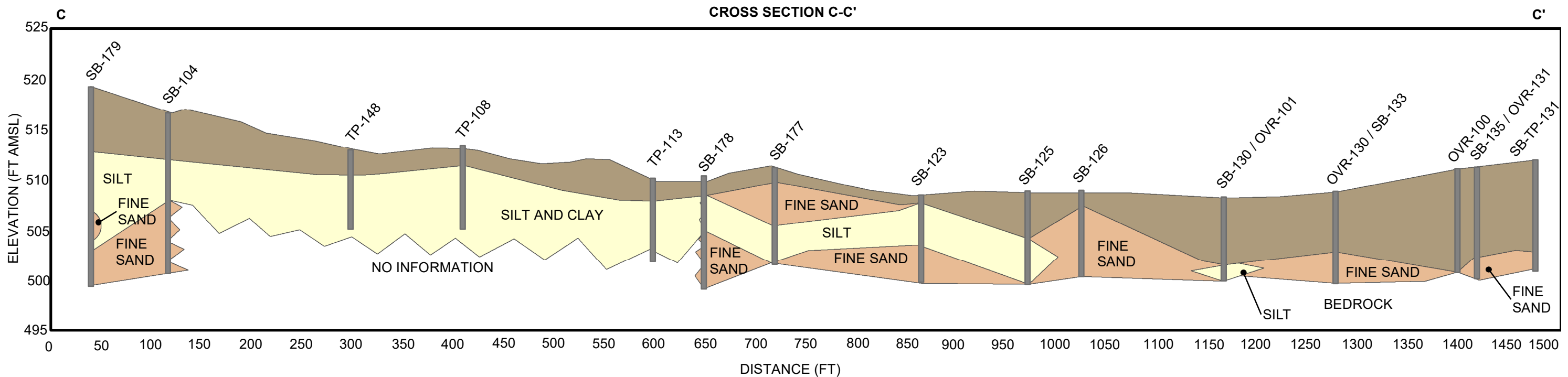
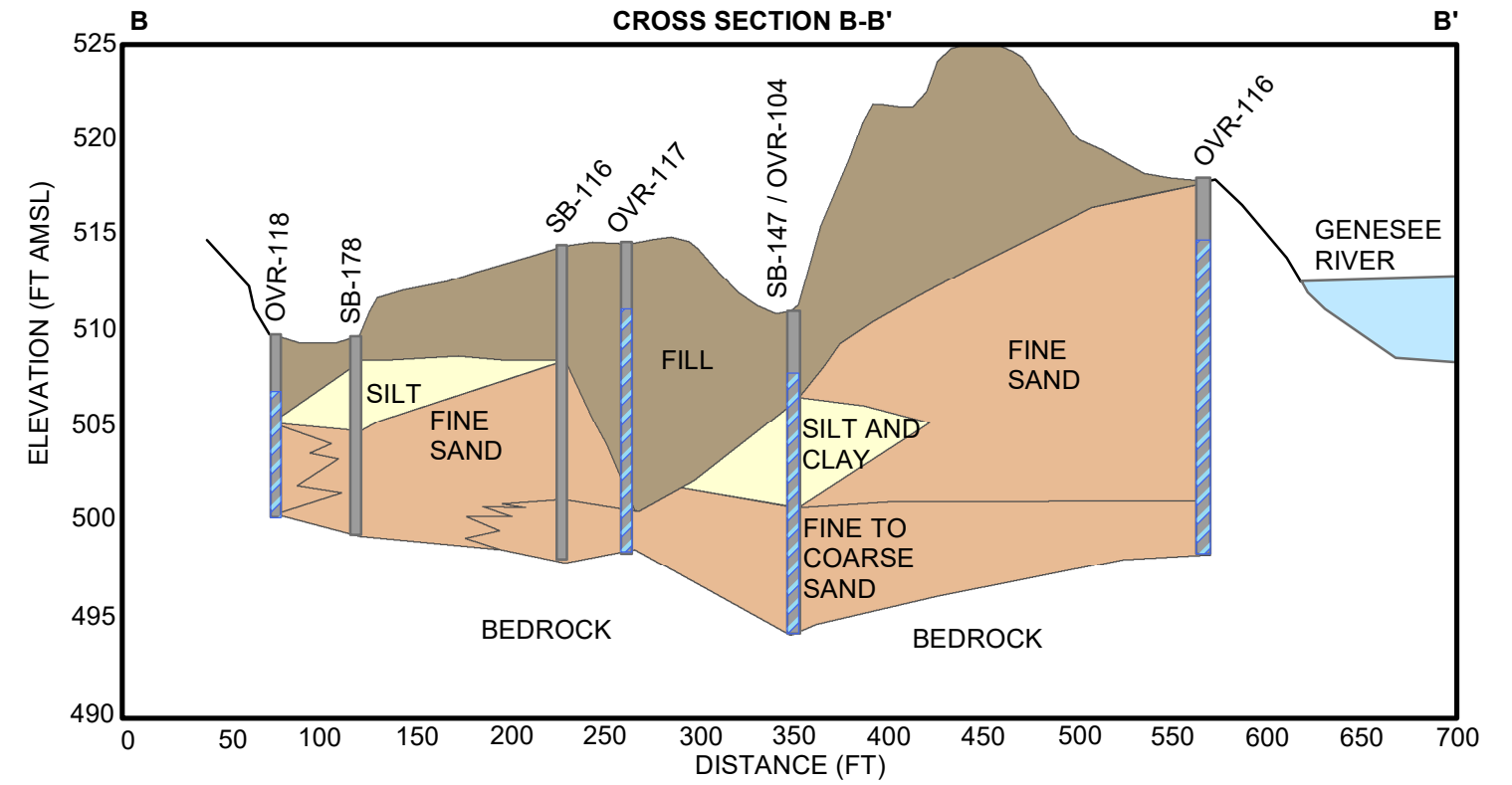
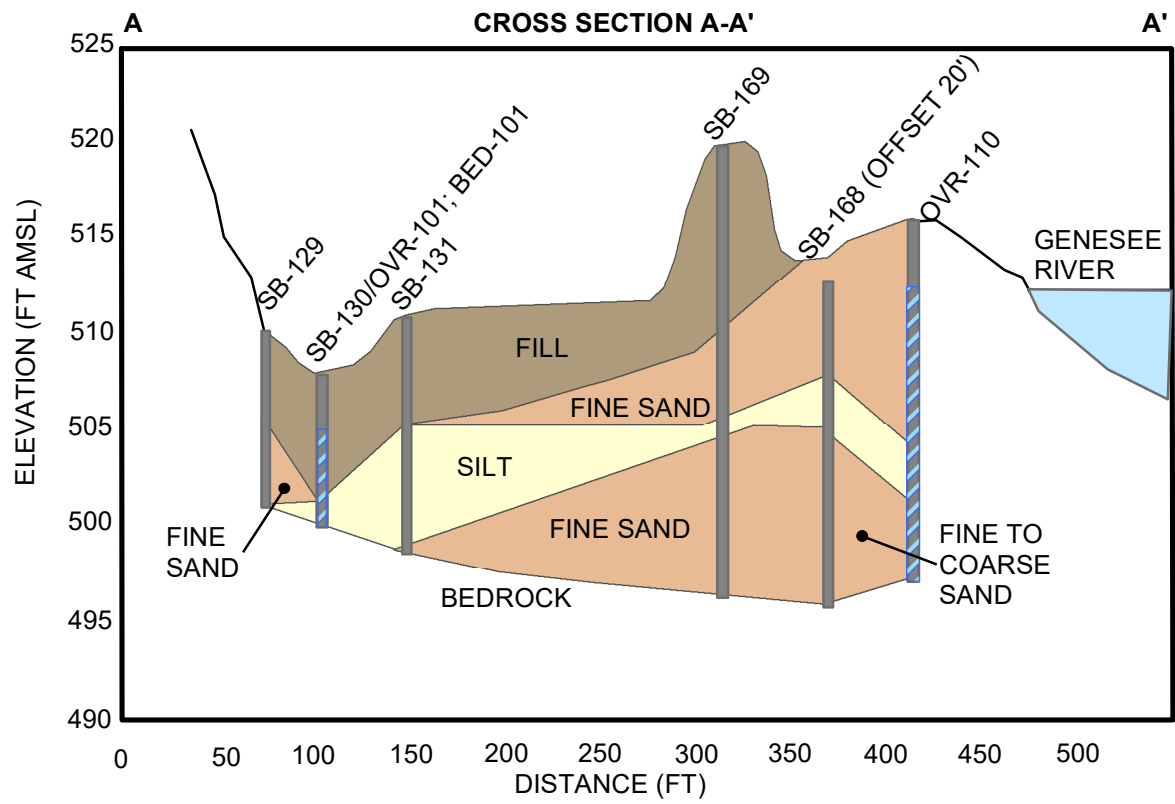


- NOTES:**
- LOCATIONS OF PARCEL BOUNDARIES ARE APPROXIMATE AND PROVIDED BY THE CITY OF ROCHESTER.
 - SOME SHAPEFILES OBTAINED FROM LABELLA ASSOCIATES, P.C. IN 2008/2009.
 - INFORMATION SOURCES:
 - DATA SUMMARY PACKAGE, FORMER VACUUM OIL REFINERY SITE - 15 FLINT STREET, OCTOBER 2008, LABELLA ASSOCIATES, P.C.
 - SUBSURFACE INVESTIGATION SUMMARY REPORT, FORMER VACUUM OIL COMPANY REFINERY AREA, JANUARY 12, 2009, ROUX ASSOCIATES, INC.
 - PHASE I ENVIRONMENTAL SITE ASSESSMENTS 1, 13, 31, 69, AND 75 COTTAGE STREET, 100 RIVERVIEW PLACE, 102 VIOLETTA STREET, AND 1315 S. PLYMOUTH AVENUE, ROCHESTER, NEW YORK, DECEMBER 2012, OBG.
 - 2015 AERIAL IMAGERY OBTAINED FROM NYS GIS CLEARINGHOUSE.
 - EXISTING MULTI-USE TRAIL SHAPEFILE PROVIDED BY GENESSEE TRANSPORTATION COUNCIL, LOCATED IN ROCHESTER, NEW YORK ON MAY 28, 2015.
 - SAMPLE LOCATION COORDINATES RECORDED USING A GPS UNIT.
 - RECOGNIZED ENVIRONMENTAL CONDITIONS ARE DETAILED IN THE DECEMBER 2012 OBG PHASE I ESA REPORT.

V:\env06-01\proj\p101\Rockester\1186261157\Drawings\OBG\Drawings\WQ\WQDRR_2017\RI_Samp_Loc_1186261157.dwg
 PLOT DATE: 10/21/19 8:57:15 AM Monday
 This document was developed in color. Reproduction in B/W may not represent the data as intended.

4/25/2018 10:39:07 AM

I:\Rochester-C.11862\61157.Vacuum-Oil-Bcp\Docs\DWG\MXD\DIR_2017\Cross Sections_Rev.mxd



- LEGEND**
- FILL
 - SAND
 - SILT AND/OR CLAY
 - BORING OR TEST PIT
 - WELL SCREENED INTERVAL

CITY OF ROCHESTER
BROWNFIELD CLEANUP PROGRAM
REMEDIAL INVESTIGATION REPORT
PORTION OF FORMER VACUUM OIL REFINERY

NOTE: STRATIGRAPHIC LENSES LESS THAN 2 FEET THICK ARE NOT SHOWN.



CROSS SECTIONS

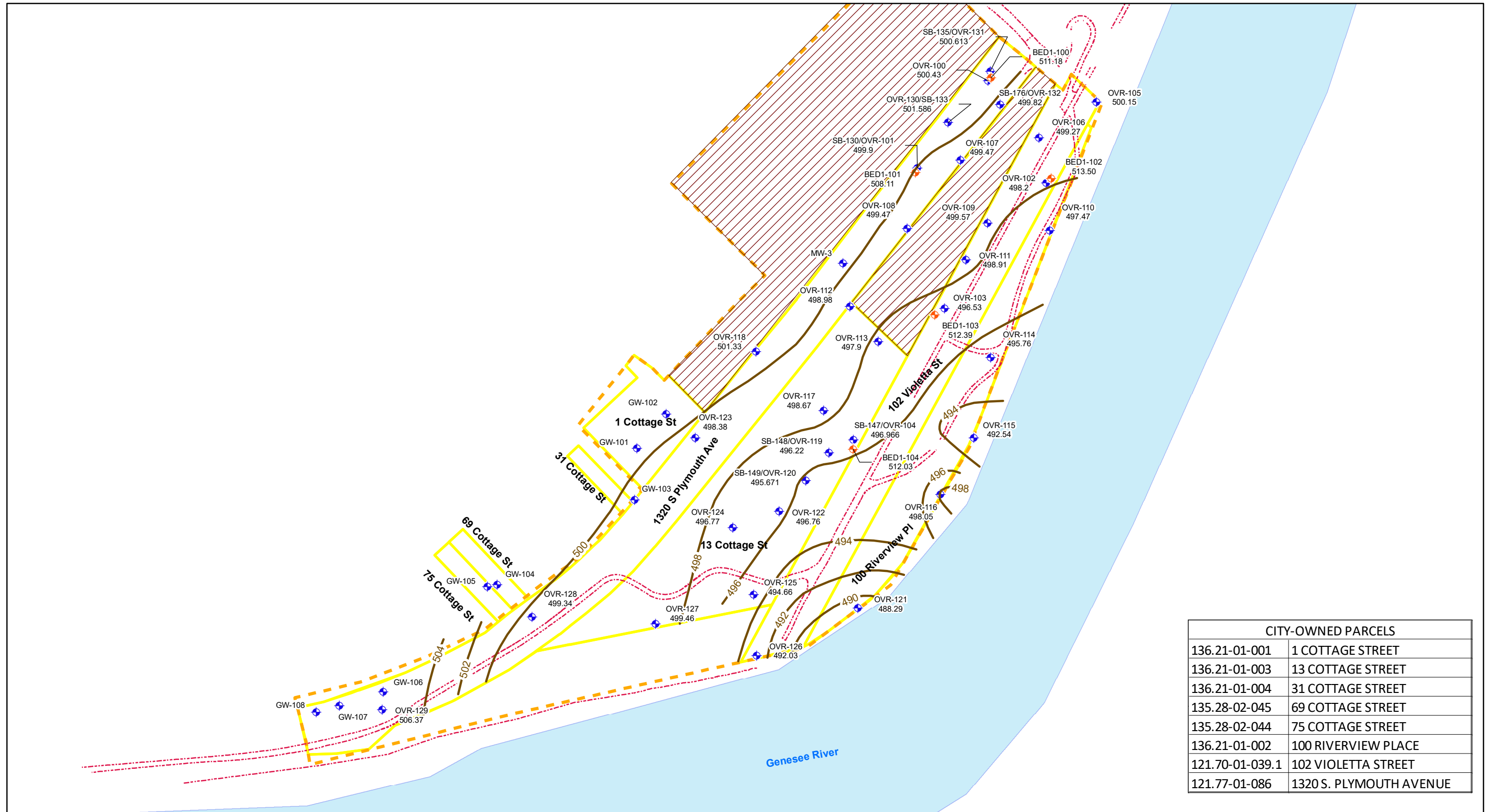


O'BRIEN & GERE ENGINEERS, INC.

11862.61157
OCTOBER 2019

4/18/2018 1:00:16 PM

I:\Rochester-C.11862\61157.Vacuum-Oil-Bcp\Docs\DWG\MXDIR\IR_2017\Top_Bedrock.mxd

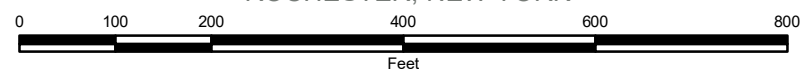


CITY-OWNED PARCELS	
136.21-01-001	1 COTTAGE STREET
136.21-01-003	13 COTTAGE STREET
136.21-01-004	31 COTTAGE STREET
135.28-02-045	69 COTTAGE STREET
135.28-02-044	75 COTTAGE STREET
136.21-01-002	100 RIVERVIEW PLACE
121.70-01-039.1	102 VIOLETTA STREET
121.77-01-086	1320 S. PLYMOUTH AVENUE

LEGEND

- BEDROCK WELL
- OVERBURDEN MONITORING WELL
- BEDROCK CONTOUR
- BIKE PATH
- NOT PART OF CITY OF ROCHESTER BROWNFIELD CLEANUP PROGRAM SITE; HOWEVER, THESE PARCELS ARE BEING INVESTIGATED BY OTHER ENTITIES.
- FORMER VACUUM OIL REFINERY SITE (APPROXIMATE)
- BROWNFIELD CLEANUP PROGRAM SITE LIMITS (APPROXIMATELY 15.4 ACRES)

CITY OF ROCHESTER BROWNFIELD CLEANUP PROGRAM
 REMEDIAL INVESTIGATION REPORT
 PORTION OF FORMER VACUUM OIL REFINERY
 1, 13, 31, 69 AND 75 COTTAGE STREET;
 100 RIVERVIEW PLACE; 102 VIOLETTA STREET;
 AND PORTION OF 1320 S. PLYMOUTH AVENUE
 ROCHESTER, NEW YORK



BEDROCK SURFACE ELEVATION

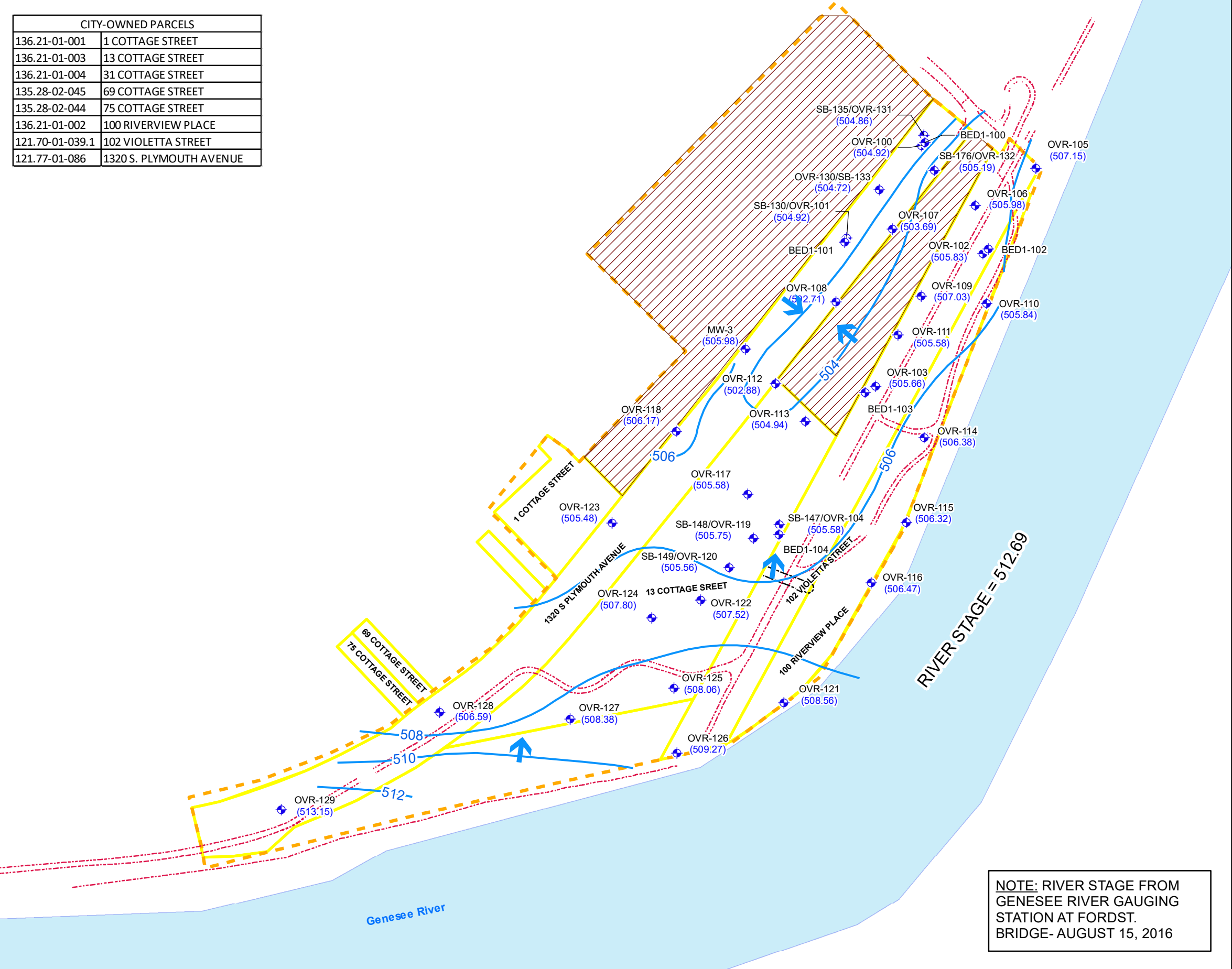


O'BRIEN & GERE ENGINEERS, INC.

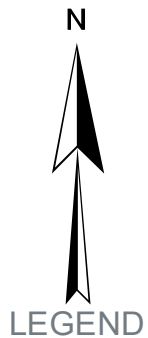
11862.61157
 OCTOBER 2019

3/6/2019 10:37:46 AM

\\server06-01\projects\Rochester-C.11862\61157.Vacuum-Oil-Bop\Docs\DWG\MXD\RIR_2017\GRW_Overburden082016.mxd



CITY-OWNED PARCELS	
136.21-01-001	1 COTTAGE STREET
136.21-01-003	13 COTTAGE STREET
136.21-01-004	31 COTTAGE STREET
135.28-02-045	69 COTTAGE STREET
135.28-02-044	75 COTTAGE STREET
136.21-01-002	100 RIVERVIEW PLACE
121.70-01-039.1	102 VIOLETTA STREET
121.77-01-086	1320 S. PLYMOUTH AVENUE



- MONITORING WELL
 - GROUNDWATER CONTOUR
 - APPROXIMATE GROUNDWATER FLOW DIRECTION
 - DRAINPIPE
 - BIKE PATH
 - NOT PART OF CITY OF ROCHESTER BROWNFIELD CLEANUP PROGRAM SITE; HOWEVER, THESE PARCELS ARE BEING INVESTIGATED BY OTHER ENTITIES
 - FORMER VACUUM OIL REFINERY SITE (APPROXIMATE)
 - BROWNFIELD CLEANUP PROGRAM SITE LIMITS (APPROXIMATELY 15.4 ACRES)
- CITY OF ROCHESTER
BROWNFIELD CLEANUP PROGRAM
REMEDIAL INVESTIGATION
REPORT
PORTION OF FORMER VACUUM OIL
REFINERY

1, 13, 31, 69, AND 75 COTTAGE STREET;
100 RIVERVIEW PLACE;
102 VIOLETTA STREET; AND PORTION OF
1320 S. PLYMOUTH AVENUE
ROCHESTER, NEW YORK

OVERBURDEN GROUNDWATER
ELEVATION CONTOURS -
AUGUST 2016



NOTE: RIVER STAGE FROM
GENESSEE RIVER GAUGING
STATION AT FORDST.
BRIDGE- AUGUST 15, 2016

11862.61157
OCTOBER 2019

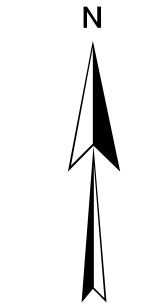
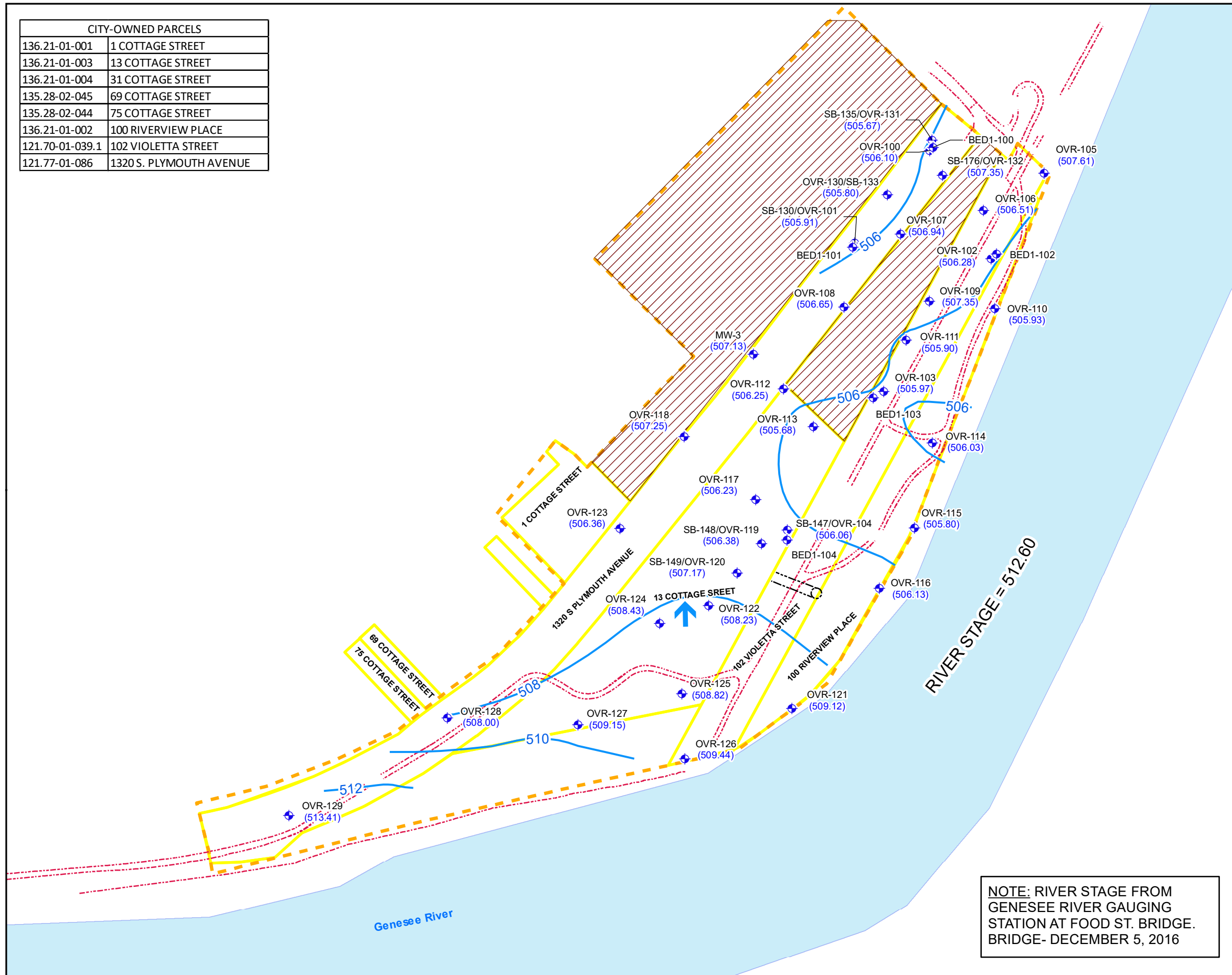


O'BRIEN & GERE ENGINEERS, INC.

3/6/2019 11:14:56 AM

\\server06-01\projects\Rochester-C.11862\61157.Vacuum-Oil-Bop\Docs\DWG\MXD\RIR_2017\GRW_Overburden122016.mxd

CITY-OWNED PARCELS	
136.21-01-001	1 COTTAGE STREET
136.21-01-003	13 COTTAGE STREET
136.21-01-004	31 COTTAGE STREET
135.28-02-045	69 COTTAGE STREET
135.28-02-044	75 COTTAGE STREET
136.21-01-002	100 RIVERVIEW PLACE
121.70-01-039.1	102 VIOLETTA STREET
121.77-01-086	1320 S. PLYMOUTH AVENUE



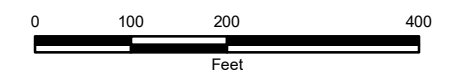
LEGEND

- MONITORING WELL
- GROUNDWATER CONTOUR
- APPROXIMATE GROUNDWATER FLOW DIRECTION
- DRAINPIPE
- BIKE PATH
- NOT PART OF CITY OF ROCHESTER BROWNFIELD CLEANUP PROGRAM SITE; HOWEVER, THESE PARCELS ARE BEING INVESTIGATED BY OTHER ENTITIES
- FORMER VACUUM OIL REFINERY SITE (APPROXIMATE)
- BROWNFIELD CLEANUP PROGRAM SITE LIMITS (APPROXIMATELY 15.4 ACRES)

CITY OF ROCHESTER
 BROWNFIELD CLEANUP PROGRAM
 REMEDIAL INVESTIGATION
 REPORT
 PORTION OF FORMER VACUUM OIL
 REFINERY

1, 13, 31, 69, AND 75 COTTAGE STREET;
 100 RIVERVIEW PLACE;
 102 VIOLETTA STREET; AND PORTION OF
 1320 S. PLYMOUTH AVENUE
 ROCHESTER, NEW YORK

OVERBURDEN GROUNDWATER
 ELEVATION CONTOURS -
 DECEMBER 2016



NOTE: RIVER STAGE FROM
 GENESEE RIVER GAUGING
 STATION AT FOOD ST. BRIDGE.
 BRIDGE- DECEMBER 5, 2016

11862.61157
 OCTOBER 2019

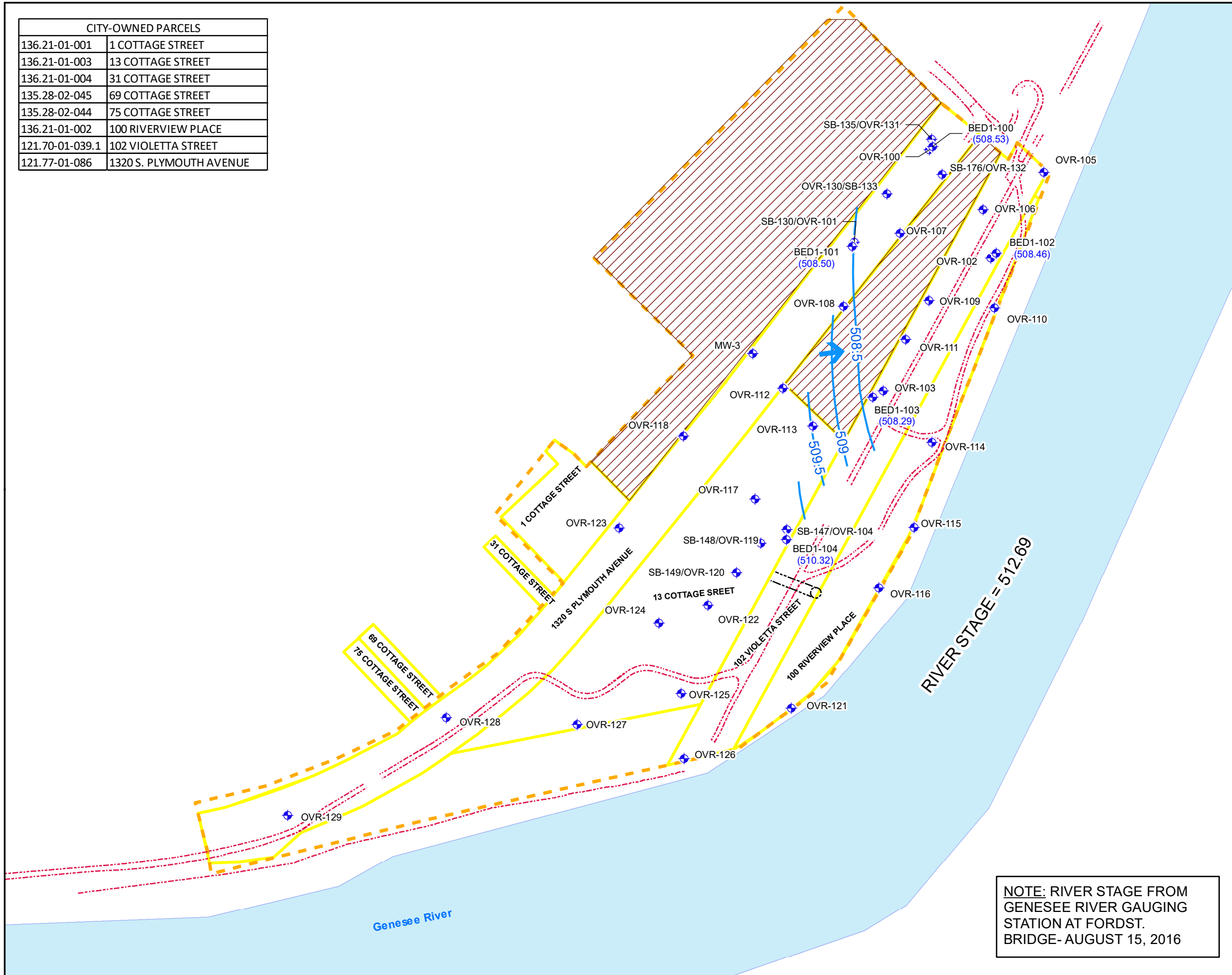


O'BRIEN & GERE ENGINEERS, INC.

3/6/2019 10:38:49 AM

\\server06-01\projects\Rochester-C.11862\61157.Vacuum-Oil-Bop\Docs\DWG\MXD\RIR_2017\GRW_Bedrock082016.mxd

CITY-OWNED PARCELS	
136.21-01-001	1 COTTAGE STREET
136.21-01-003	13 COTTAGE STREET
136.21-01-004	31 COTTAGE STREET
135.28-02-045	69 COTTAGE STREET
135.28-02-044	75 COTTAGE STREET
136.21-01-002	100 RIVERVIEW PLACE
121.70-01-039.1	102 VIOLETTA STREET
121.77-01-086	1320 S. PLYMOUTH AVENUE



NOTE: RIVER STAGE FROM
GENESEE RIVER GAUGING
STATION AT FORDST.
BRIDGE- AUGUST 15, 2016

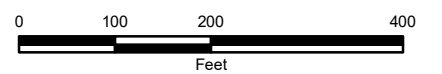
N

LEGEND

- ◆ MONITORING WELL
- GROUNDWATER CONTOUR
- ← APPROXIMATE GROUNDWATER FLOW DIRECTION
- DRAINPIPE
- - - BIKE PATH
- NOT PART OF CITY OF ROCHESTER BROWNFIELD CLEANUP PROGRAM SITE; HOWEVER, THESE PARCELS ARE BEING INVESTIGATED BY OTHER ENTITIES
- FORMER VACUUM OIL REFINERY SITE (APPROXIMATE)
- BROWNFIELD CLEANUP PROGRAM SITE LIMITS (APPROXIMATELY 15.4 ACRES)

CITY OF ROCHESTER
BROWNFIELD CLEANUP PROGRAM
REMEDIAL INVESTIGATION
REPORT
PORTION OF FORMER VACUUM OIL
REFINERY

1, 13, 31, 69, AND 75 COTTAGE STREET;
100 RIVERVIEW PLACE;
102 VIOLETTA STREET; AND PORTION OF
1320 S. PLYMOUTH AVENUE
ROCHESTER, NEW YORK
BEDROCK GROUNDWATER
ELEVATION CONTOURS -
AUGUST 2016



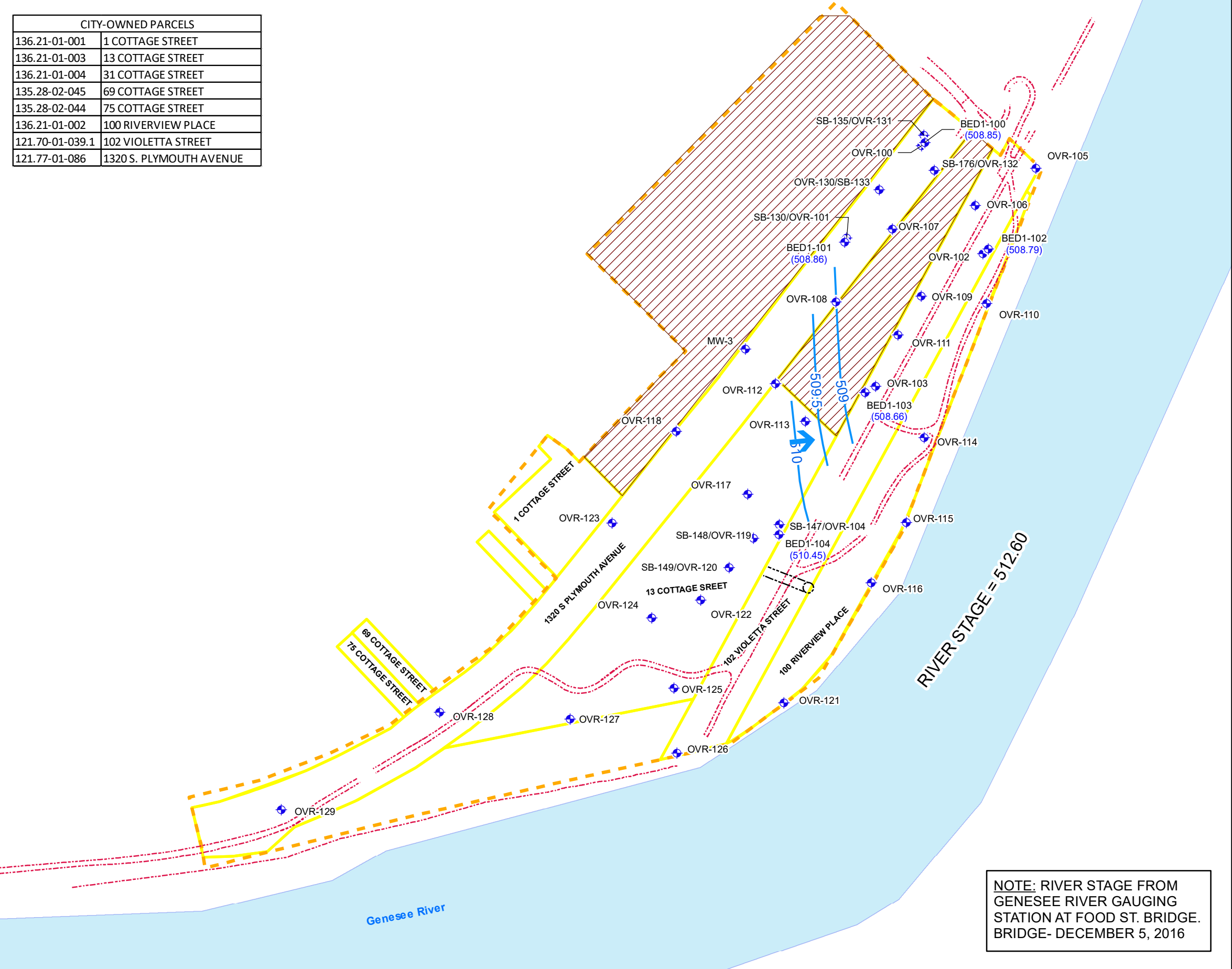
11862.61157
OCTOBER 2019



O'BRIEN & GERE ENGINEERS, INC.

3/6/2019 10:48:05 AM

\\server06-01\projects\Rochester-C.11862\61157.Vacuum-Oil-Bop\Docs\DWG\MXD\RIR_2017\GRW_Bedrock120516.mxd



CITY-OWNED PARCELS	
136.21-01-001	1 COTTAGE STREET
136.21-01-003	13 COTTAGE STREET
136.21-01-004	31 COTTAGE STREET
135.28-02-045	69 COTTAGE STREET
135.28-02-044	75 COTTAGE STREET
136.21-01-002	100 RIVERVIEW PLACE
121.70-01-039.1	102 VIOLETTA STREET
121.77-01-086	1320 S. PLYMOUTH AVENUE



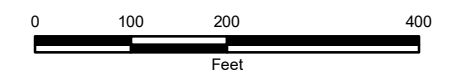
LEGEND

- MONITORING WELL
- GROUNDWATER CONTOUR
- APPROXIMATE GROUNDWATER FLOW DIRECTION
- DRAINPIPE
- BIKE PATH
- NOT PART OF CITY OF ROCHESTER BROWNFIELD CLEANUP PROGRAM SITE; HOWEVER, THESE PARCELS ARE BEING INVESTIGATED BY OTHER ENTITIES
- FORMER VACUUM OIL REFINERY SITE (APPROXIMATE)
- BROWNFIELD CLEANUP PROGRAM SITE LIMITS (APPROXIMATELY 15.4 ACRES)

CITY OF ROCHESTER
BROWNFIELD CLEANUP PROGRAM
REMEDIAL INVESTIGATION
REPORT
PORTION OF FORMER VACUUM OIL
REFINERY

1, 13, 31, 69, AND 75 COTTAGE STREET;
100 RIVERVIEW PLACE;
102 VIOLETTA STREET; AND PORTION OF
1320 S. PLYMOUTH AVENUE
ROCHESTER, NEW YORK

BEDROCK GROUNDWATER
ELEVATION CONTOURS -
DECEMBER 2016



11862.61157
OCTOBER 2019



O'BRIEN & GERE ENGINEERS, INC.

NOTE: RIVER STAGE FROM
GENESEE RIVER GAUGING
STATION AT FOOD ST. BRIDGE.
BRIDGE- DECEMBER 5, 2016

FIGURE 11A



NOTES:
 1. SOME SHAPEFILES OBTAINED FROM LABELLA ASSOCIATES, P.C. IN 2008/2009.
 2. INFORMATION SOURCES:
 - DATA SUMMARY PACKAGE, FORMER VACUUM OIL REFINERY SITE - 15 FLINT STREET, OCTOBER 2008, LABELLA ASSOCIATES, P.C.
 - SUBSURFACE INVESTIGATION SUMMARY REPORT, FORMER VACUUM OIL COMPANY REFINERY AREA, JANUARY 12, 2009, ROUX ASSOCIATES, INC.
 - PHASE I ENVIRONMENTAL SITE ASSESSMENTS 1, 13, 31, 69, AND 75 COTTAGE STREET, 100 RIVERVIEW PLACE, 102 VIOLETTA STREET, AND 1315 S. PLYMOUTH AVENUE, ROCHESTER, NEW YORK, DECEMBER 2012, OBG.
 3. 2015 AERIAL IMAGERY OBTAINED FROM NYS GIS CLEARINGHOUSE.
 4. EXISTING MULTUSE TRAIL SHAPEFILE PROVIDED BY GENESSEE TRANSPORTATION COUNCIL, LOCATED IN ROCHESTER, NEW YORK ON MAY 28, 2015.
 5. SAMPLE LOCATION COORDINATES RECORDED USING A GPS UNIT.

CITY-OWNED PARCELS	
136.21-01-001	11 COTTAGE STREET
136.21-01-003	13 COTTAGE STREET
136.21-01-004	31 COTTAGE STREET
135.28-02-045	69 COTTAGE STREET
135.28-02-044	75 COTTAGE STREET
136.21-01-002	100 RIVERVIEW PLACE
121.70-01-039.1	102 VIOLETTA STREET
121.77-01-086	1320 S. PLYMOUTH AVENUE

LEGEND

SAMPLE LOCATION TYPE

- BED1-100 BEDROCK WELL
- OVR-106 OVERBURDEN MONITORING WELL
- TP-149 TEST PIT
- SB-100 SOIL BORING
- SS-100 SURFACE SOIL
- SV-100 SOIL VAPOR
- BIKE PATH
- BROWNFIELD CLEANUP PROGRAM SITE LIMITS (APPROXIMATELY 15.4 ACRES)
- FORMER VACUUM OIL REFINERY SITE (APPROXIMATE)
- NOT PART OF CITY OF ROCHESTER BROWNFIELD CLEANUP PROGRAM SITE; HOWEVER, THESE PARCELS ARE BEING INVESTIGATED BY OTHER ENTITIES.

CITY OF ROCHESTER
 BROWNFIELD CLEANUP PROGRAM
 REMEDIAL INVESTIGATION
 REPORT
 PORTION OF FORMER VACUUM OIL REFINERY

1, 13, 31, 69, AND 75 COTTAGE STREET;
 100 RIVERVIEW PLACE;
 102 VIOLETTA STREET; AND PORTION OF
 1320 S. PLYMOUTH AVENUE
 ROCHESTER, NEW YORK

SURFACE SOIL EXCEEDANCES

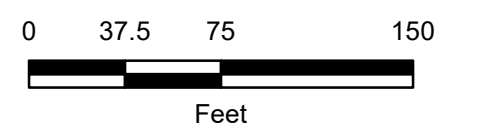
VOLATILE ORGANIC COMPOUNDS - EXCEEDS NY PART 375 - COMMERCIAL
 - EXCEEDS NY PART 375 - RESTRICTED RESIDENTIAL
 - EXCEEDS NY PART 375 - UNRESTRICTED
 - DOES NOT EXCEED CRITERIA
 - NOT SAMPLED

SEMI-VOLATILE ORGANIC COMPOUNDS - EXCEEDS NY PART 375 - COMMERCIAL
 - EXCEEDS NY PART 375 - RESTRICTED RESIDENTIAL
 - EXCEEDS NY PART 375 - UNRESTRICTED
 - DOES NOT EXCEED CRITERIA
 - NOT SAMPLED

METALS - EXCEEDS NY PART 375 - COMMERCIAL
 - EXCEEDS NY PART 375 - RESTRICTED RESIDENTIAL
 - EXCEEDS NY PART 375 - UNRESTRICTED
 - DOES NOT EXCEED CRITERIA
 - NOT SAMPLED

PESTICIDES/PCBs - EXCEEDS NY PART 375 - COMMERCIAL
 - EXCEEDS NY PART 375 - RESTRICTED RESIDENTIAL
 - EXCEEDS NY PART 375 - UNRESTRICTED
 - DOES NOT EXCEED CRITERIA
 - NOT SAMPLED

SAMPLE POINT LOCATION



11862.61157
 OCTOBER 2019



PLOT DATE: 03/28/19 2:34:56 PM SamsaSA

This document was developed in color. Reproduction in B/W may not represent the data as intended.

FIGURE 11B



NOTES:
 1. SOME SHAPEFILES OBTAINED FROM LABELLA ASSOCIATES, P.C. IN 2008/2009.
 2. INFORMATION SOURCES:
 - DATA SUMMARY PACKAGE, FORMER VACUUM OIL REFINERY SITE - 15 FLINT STREET, OCTOBER 2008, LABELLA ASSOCIATES, P.C.
 - SUBSURFACE INVESTIGATION SUMMARY REPORT, FORMER VACUUM OIL COMPANY REFINERY AREA, JANUARY 12, 2009, ROUX ASSOCIATES, INC.
 - PHASE I ENVIRONMENTAL SITE ASSESSMENTS 1, 13, 31, 69, AND 75 COTTAGE STREET, 100 RIVERVIEW PLACE, 102 VIOLETTA STREET, AND 1315 S. PLYMOUTH AVENUE, ROCHESTER, NEW YORK, DECEMBER 2012, OBG.
 3. 2015 AERIAL IMAGERY OBTAINED FROM NYS GIS CLEARINGHOUSE.
 4. EXISTING MULTI-USE TRAIL SHAPEFILE PROVIDED BY GENESSEE TRANSPORTATION COUNCIL, LOCATED IN ROCHESTER, NEW YORK ON MAY 28, 2015.
 5. SAMPLE LOCATION COORDINATES RECORDED USING A GPS UNIT.

CITY-OWNED PARCELS	
136.21-01-001	11 COTTAGE STREET
136.21-01-003	13 COTTAGE STREET
136.21-01-004	31 COTTAGE STREET
135.28-02-045	69 COTTAGE STREET
135.28-02-044	75 COTTAGE STREET
136.21-01-002	100 RIVERVIEW PLACE
121.70-01-039.1	102 VIOLETTA STREET
121.77-01-086	1320 S. PLYMOUTH AVENUE



LEGEND

SAMPLE LOCATION TYPE

- BED1-100 BEDROCK WELL
- OVR-106 OVERBURDEN MONITORING WELL
- TP-149 TEST PIT
- SB-100 SOIL BORING
- SS-100 SURFACE SOIL
- SV-100 SOIL VAPOR
- BIKE PATH
- BROWNFIELD CLEANUP PROGRAM SITE LIMITS (APPROXIMATELY 15.4 ACRES)
- FORMER VACUUM OIL REFINERY SITE (APPROXIMATE)
- NOT PART OF CITY OF ROCHESTER BROWNFIELD CLEANUP PROGRAM SITE; HOWEVER, THESE PARCELS ARE BEING INVESTIGATED BY OTHER ENTITIES.

CITY OF ROCHESTER
 BROWNFIELD CLEANUP PROGRAM
 REMEDIAL INVESTIGATION
 REPORT
 PORTION OF FORMER VACUUM OIL REFINERY

1, 13, 31, 69, AND 75 COTTAGE STREET;
 100 RIVERVIEW PLACE;
 102 VIOLETTA STREET; AND PORTION OF
 1320 S. PLYMOUTH AVENUE
 ROCHESTER, NEW YORK

SURFACE COVER EXCEEDANCES

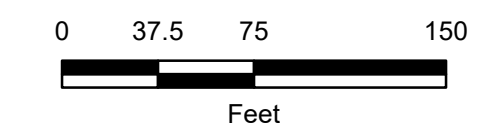
VOLATILE ORGANIC COMPOUNDS - EXCEEDS NY PART 375 - COMMERCIAL
 - EXCEEDS NY PART 375 - RESTRICTED RESIDENTIAL
 - EXCEEDS NY PART 375 - UNRESTRICTED
 - DOES NOT EXCEED CRITERIA
 - NOT SAMPLED

SEMI-VOLATILE ORGANIC COMPOUNDS - EXCEEDS NY PART 375 - COMMERCIAL
 - EXCEEDS NY PART 375 - RESTRICTED RESIDENTIAL
 - EXCEEDS NY PART 375 - UNRESTRICTED
 - DOES NOT EXCEED CRITERIA
 - NOT SAMPLED

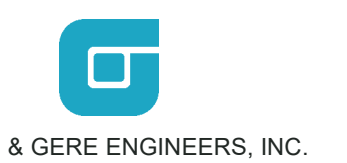
METALS - EXCEEDS NY PART 375 - COMMERCIAL
 - EXCEEDS NY PART 375 - RESTRICTED RESIDENTIAL
 - EXCEEDS NY PART 375 - UNRESTRICTED
 - DOES NOT EXCEED CRITERIA
 - NOT SAMPLED

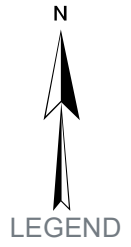
PESTICIDES/PCBs - EXCEEDS NY PART 375 - COMMERCIAL
 - EXCEEDS NY PART 375 - RESTRICTED RESIDENTIAL
 - EXCEEDS NY PART 375 - UNRESTRICTED
 - DOES NOT EXCEED CRITERIA
 - NOT SAMPLED

SAMPLE POINT LOCATION



11862.61157
 OCTOBER 2019





SAMPLE LOCATION TYPE

★ SURFACE SOIL

SVOC CONCENTRATION

● NON DETECT

● <1 PPM

● 1-10 PPM

● 10-100 PPM

● 100-250 PPM

● 250-500 PPM

● >500 PPM

— BIKE PATH

--- DRAINPIPE

NOT PART OF CITY OF ROCHESTER BROWNFIELD CLEANUP PROGRAM SITE; HOWEVER, THESE PARCELS ARE BEING INVESTIGATED BY OTHER ENTITIES.

FORMER VACUUM OIL REFINERY SITE (APPROXIMATE)

BROWNFIELD CLEANUP PROGRAM SITE LIMITS (APPROXIMATELY 15.4 ACRES)

CITY OF ROCHESTER
BROWNFIELD CLEANUP PROGRAM
REMEDIAL INVESTIGATION WORK PLAN
PORTION OF FORMER VACUUM OIL REFINERY

1, 13, 31, 69, AND 75 COTTAGE STREET;
100 RIVERVIEW PLACE; 102 VIOLETTA STREET;
AND PORTION OF 1320 S. PLYMOUTH AVENUE
ROCHESTER, NEW YORK

TOTAL SVOCs
SURFACE SOIL



11862.61157
OCTOBER 2019



O'BRIEN & GERE ENGINEERS, INC.

CITY-OWNED PARCELS	
136.21-01-001	1 COTTAGE STREET
136.21-01-003	13 COTTAGE STREET
136.21-01-004	31 COTTAGE STREET
135.28-02-045	69 COTTAGE STREET
135.28-02-044	75 COTTAGE STREET
136.21-01-002	100 RIVERVIEW PLACE
121.70-01-039.1	102 VIOLETTA STREET
121.77-01-086	1320 S. PLYMOUTH AVENUE

FIGURE 13



I:\Rochester-C-11862\1157-Vacuum-OU-Reg\Drawings\DWG\MBR-2017-Exceedance-SubsurfaceSoil-20171221_REV.dwg

NOTES:
 1. SOME SHAPEFILES OBTAINED FROM LABELLA ASSOCIATES, P.C. IN 2008/2009.
 2. INFORMATION SOURCES:
 - DATA SUMMARY PACKAGE, FORMER VACUUM OIL REFINERY SITE - 15 FLINT STREET, OCTOBER 2008, LABELLA ASSOCIATES, P.C.
 - SUBSURFACE INVESTIGATION SUMMARY REPORT, FORMER VACUUM OIL COMPANY REFINERY AREA, JANUARY 12, 2009, ROUX ASSOCIATES, INC.
 - PHASE I ENVIRONMENTAL SITE ASSESSMENTS 1, 13, 31, 69, AND 75 COTTAGE STREET, 100 RIVERVIEW PLACE, 102 VIOLETTA STREET, AND 1315 S. PLYMOUTH AVENUE, ROCHESTER, NEW YORK, DECEMBER 2012, OBG.
 3. 2015 AERIAL IMAGERY OBTAINED FROM NYS GIS CLEARINGHOUSE.
 4. EXISTING MULTI-USE TRAIL SHAPEFILE PROVIDED BY GENESSEE TRANSPORTATION COUNCIL, LOCATED IN ROCHESTER, NEW YORK ON MAY 28, 2015.
 5. SAMPLE LOCATION COORDINATES RECORDED USING A GPS UNIT.

CITY-OWNED PARCELS	
136.21-01-001	11 COTTAGE STREET
136.21-01-003	13 COTTAGE STREET
136.21-01-004	31 COTTAGE STREET
135.28-02-045	69 COTTAGE STREET
135.28-02-044	75 COTTAGE STREET
136.21-01-002	100 RIVERVIEW PLACE
121.70-01-039.1	102 VIOLETTA STREET
121.77-01-086	1320 S. PLYMOUTH AVENUE



LEGEND

SAMPLE LOCATION TYPE

- BED1-100 BEDROCK WELL
- OVR-106 OVERBURDEN MONITORING WELL
- TP-149 TEST PIT
- SB-100 SOIL BORING
- SS-100 SURFACE SOIL
- BIKE PATH
- BROWNFIELD CLEANUP PROGRAM SITE LIMITS (APPROXIMATELY 15.4 ACRES)
- FORMER VACUUM OIL REFINERY SITE (APPROXIMATE)
- NOT PART OF CITY OF ROCHESTER BROWNFIELD CLEANUP PROGRAM SITE; HOWEVER, THESE PARCELS ARE BEING INVESTIGATED BY OTHER ENTITIES.

CITY OF ROCHESTER
 BROWNFIELD CLEANUP PROGRAM
 REMEDIAL INVESTIGATION
 REPORT
 PORTION OF FORMER VACUUM OIL REFINERY

1, 13, 31, 69, AND 75 COTTAGE STREET;
 100 RIVERVIEW PLACE;
 102 VIOLETTA STREET; AND PORTION OF
 1320 S. PLYMOUTH AVENUE
 ROCHESTER, NEW YORK

SUBSURFACE SOIL EXCEEDANCES

Legend for Exceedance Status:

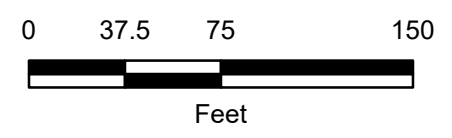
- EXCEEDS NY PART 375 - COMMERCIAL
- EXCEEDS NY PART 375 - RESTRICTED RESIDENTIAL
- EXCEEDS NY PART 375 - UNRESTRICTED
- DOES NOT EXCEED CRITERIA
- NOT SAMPLED

Legend for Compound Types:

- VOLATILE ORGANIC COMPOUNDS
- SEMI-VOLATILE ORGANIC COMPOUNDS
- METALS
- PESTICIDES

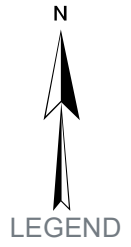
Legend for Symbols:

- SAMPLE POINT LOCATION
- BIKE PATH



11862.61157
 OCTOBER 2019





SAMPLE LOCATION TYPE

- ◆ MONITORING WELL
- ▲ SOIL BORING
- ✚ TEST PIT

VOC CONCENTRATION

- NON DETECT
- <1 PPM
- 1 - 10 PPM
- 10 - 100 PPM
- 100 - 250 PPM
- 250 - 500 PPM
- >500 PPM

- BIKE PATH
- - - DRAINPIPE

NOT PART OF CITY OF ROCHESTER BROWNFIELD CLEANUP PROGRAM SITE; HOWEVER, THESE PARCELS ARE BEING INVESTIGATED BY OTHER ENTITIES.

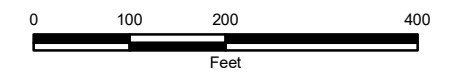
FORMER VACUUM OIL REFINERY SITE (APPROXIMATE)

BROWNFIELD CLEANUP PROGRAM SITE LIMITS (APPROXIMATELY 15.4 ACRES)

CITY OF ROCHESTER
BROWNFIELD CLEANUP PROGRAM
REMEDIAL INVESTIGATION REPORT
PORTION OF FORMER VACUUM OIL REFINERY

1, 13, 31, 69, AND 75 COTTAGE STREET;
100 RIVERVIEW PLACE; 102 VIOLETTA STREET;
AND PORTION OF 1320 S. PLYMOUTH AVENUE
ROCHESTER, NEW YORK

TOTAL VOCs
SUBSURFACE SOIL

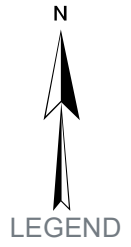


11862.61157
OCTOBER 2019



O'BRIEN & GERE ENGINEERS, INC.

CITY-OWNED PARCELS	
136.21-01-001	1 COTTAGE STREET
136.21-01-003	13 COTTAGE STREET
136.21-01-004	31 COTTAGE STREET
135.28-02-045	69 COTTAGE STREET
135.28-02-044	75 COTTAGE STREET
136.21-01-002	100 RIVERVIEW PLACE
121.70-01-039.1	102 VIOLETTA STREET
121.77-01-086	1320 S. PLYMOUTH AVENUE



SAMPLE LOCATION TYPE

- ◆ MONITORING WELL
- ▲ SOIL BORING
- ✚ TEST PIT

SVOC CONCENTRATION

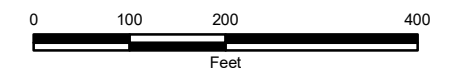
- NON DETECT
- <1 PPM
- 1-10 PPM
- 10-100 PPM
- 100-250 PPM
- 250-500 PPM
- >500 PPM

- BIKE PATH
- DRAINPIPE
- ▨ NOT PART OF CITY OF ROCHESTER BROWNFIELD CLEANUP PROGRAM SITE; HOWEVER, THESE PARCELS ARE BEING INVESTIGATED BY OTHER ENTITIES.
- ▤ FORMER VACUUM OIL REFINERY SITE (APPROXIMATE)
- ▭ BROWNFIELD CLEANUP PROGRAM SITE LIMITS (APPROXIMATELY 15.4 ACRES)

CITY OF ROCHESTER
BROWNFIELD CLEANUP PROGRAM
REMEDIAL INVESTIGATION WORK PLAN
PORTION OF FORMER VACUUM OIL REFINERY

1, 13, 31, 69, AND 75 COTTAGE STREET;
100 RIVERVIEW PLACE; 102 VIOLETTA STREET;
AND PORTION OF 1320 S. PLYMOUTH AVENUE
ROCHESTER, NEW YORK

**TOTAL SVOCs
SUBSURFACE SOIL**



11862.61157
OCTOBER 2019



O'BRIEN & GERE ENGINEERS, INC.

CITY-OWNED PARCELS	
136.21-01-001	1 COTTAGE STREET
136.21-01-003	13 COTTAGE STREET
136.21-01-004	31 COTTAGE STREET
135.28-02-045	69 COTTAGE STREET
135.28-02-044	75 COTTAGE STREET
136.21-01-002	100 RIVERVIEW PLACE
121.70-01-039.1	102 VIOLETTA STREET
121.77-01-086	1320 S. PLYMOUTH AVENUE



LEGEND

SUBSURFACE ODOR

- ODOR PRESENT 1ft - 7ft
- ODOR PRESENT 7ft - 10ft
- ODOR PRESENT 10ft - 16ft
- ODOR PRESENT >16ft

- SHEEN OR STAINING
- BIKE PATH
- - - DRAINPIPE

NOT PART OF CITY OF ROCHESTER BROWNFIELD CLEANUP PROGRAM
 SITE; HOWEVER, THESE PARCELS ARE BEING INVESTIGATED BY OTHER ENTITIES.

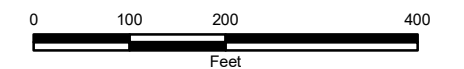
 FORMER VACUUM OIL REFINERY SITE (APPROXIMATE)

 BROWNFIELD CLEANUP PROGRAM SITE LIMITS (APPROXIMATELY 15.4 ACRES)

CITY OF ROCHESTER
 BROWNFIELD CLEANUP PROGRAM
 REMEDIAL INVESTIGATION WORK PLAN
 PORTION OF FORMER VACUUM OIL REFINERY

1, 13, 31, 69, AND 75 COTTAGE STREET;
 100 RIVERVIEW PLACE; 102 VIOLETTA STREET;
 AND PORTION OF 1320 S. PLYMOUTH AVENUE
 ROCHESTER, NEW YORK

FIELD OBSERVATIONS



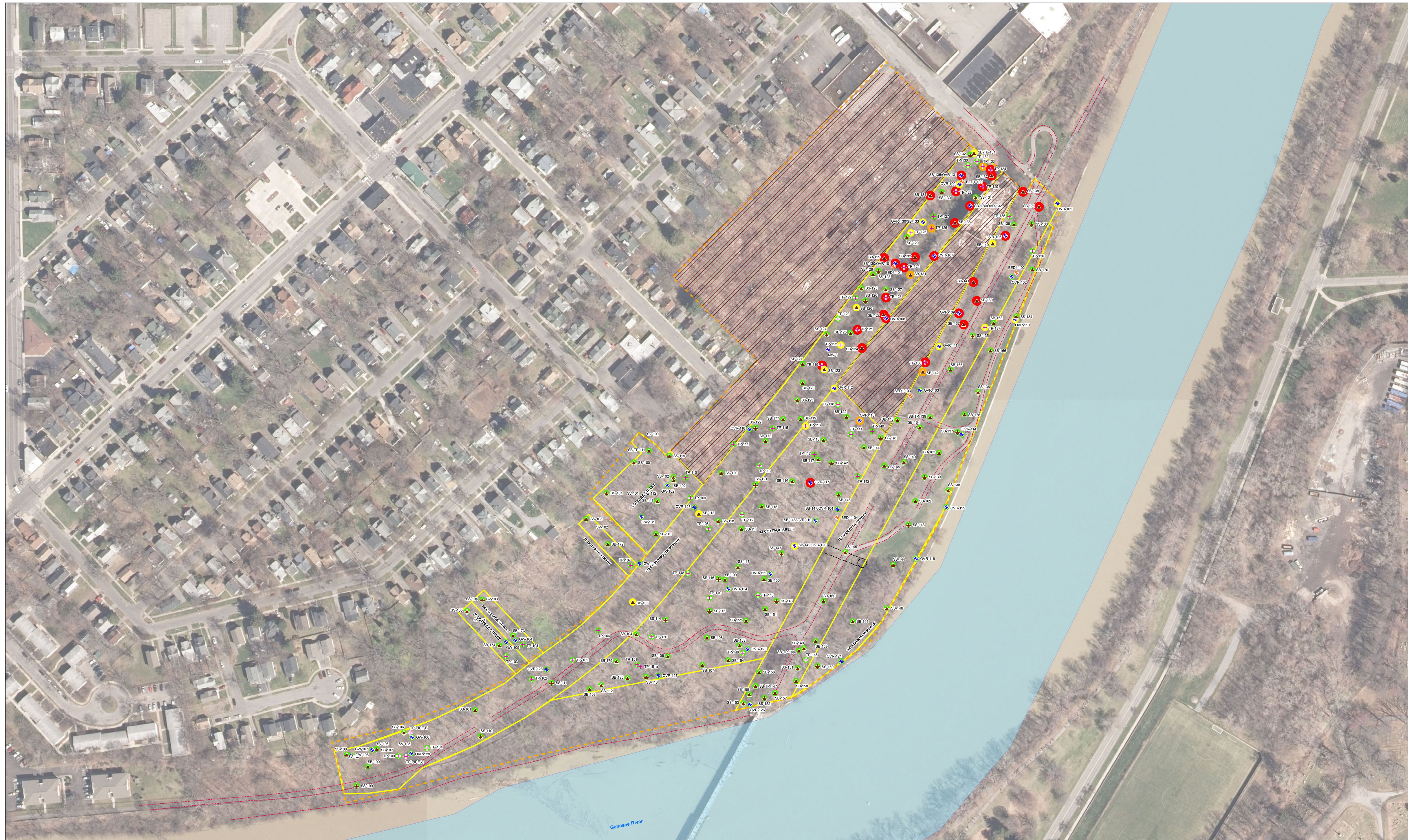
11862.61157
 OCTOBER 2019



O'BRIEN & GERE ENGINEERS, INC.

CITY-OWNED PARCELS	
136.21-01-001	1 COTTAGE STREET
136.21-01-003	13 COTTAGE STREET
136.21-01-004	31 COTTAGE STREET
135.28-02-045	69 COTTAGE STREET
135.28-02-044	75 COTTAGE STREET
136.21-01-002	100 RIVERVIEW PLACE
121.70-01-039.1	102 VIOLETTA STREET
121.77-01-086	1320 S. PLYMOUTH AVENUE

4/18/2018 1:31:37 PM



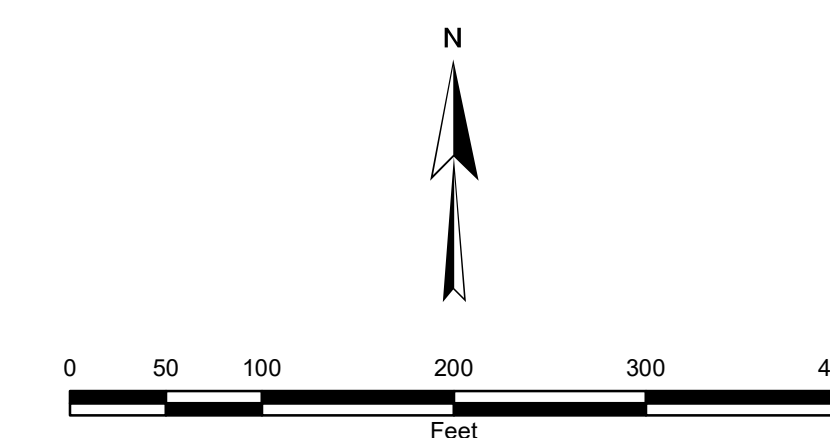
I:\Rochester-C-1186216\1157-Vacuum-Oil-Bep\Docs\DWG\MXD\RRR_2017\MaxPID.mxd

LEGEND

SAMPLE LOCATION TYPE	MAX PID VALUE (ppm)	----- DRAINPIPE
◆ BEDROCK WELL	● < 10	----- BIKE PATH
◆ OVERBURDEN MONITORING WELL	● 10 < X < 50	▨ NOT PART OF CITY OF ROCHESTER BROWNFIELD CLEANUP PROGRAM SITE; HOWEVER, THESE PARCELS WERE INVESTIGATED BY OTHER ENTITIES.
◆ TEST PIT	● 50 < X < 100	▨ FORMER VACUUM OIL REFINERY SITE (APPROXIMATE)
▲ SOIL BORING	● > 100; >100	
◆ SURFACE SOIL		

**CITY OF ROCHESTER
BROWNFIELD CLEANUP PROGRAM
REMEDIAL INVESTIGATION REPORT
PORTION OF FORMER VACUUM OIL REFINERY**

1, 13, 31, 69, AND 75 COTTAGE STREET;
100 RIVERVIEW PLACE; 102 VIOLETTA STREET;
AND PORTION OF 1320 S. PLYMOUTH AVENUE
ROCHESTER, NEW YORK



PID SCREENING

11862.61157
OCTOBER 2019



O'BRIEN & GERE ENGINEERS, INC.

4/18/2018 1:34:07 PM



LEGEND

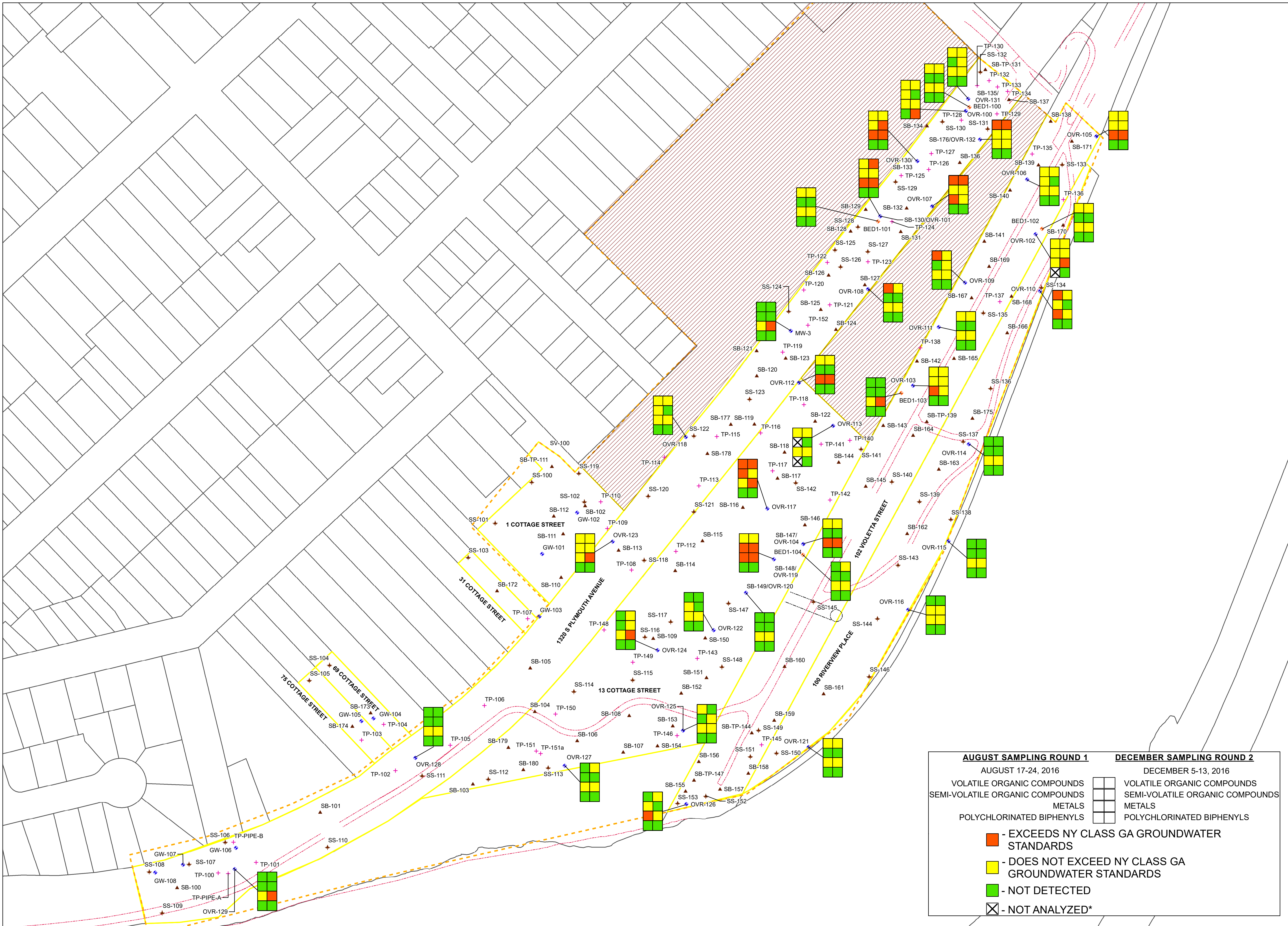
SAMPLE LOCATION TYPE

- BEDROCK WELL
- OVERBURDEN MONITORING WELL
- TEST PIT
- SOIL BORING
- SURFACE SOIL
- DRAINPIPE
- BIKE PATH
- NOT PART OF CITY OF ROCHESTER BROWNFIELD CLEANUP PROGRAM SITE; HOWEVER, THESE PARCELS ARE BEING INVESTIGATED BY OTHER ENTITIES.
- FORMER VACUUM OIL REFINERY SITE (APPROXIMATE)
- BROWNFIELD CLEANUP PROGRAM SITE LIMITS (APPROXIMATELY 15.4 ACRES)
- MONROE COUNTY PARCEL BOUNDARY

NOTES:
 -GW-101 THROUGH GW-108 ANALYTICAL RESULTS ARE NOT INCLUDED IN THIS FIGURE. PLEASE SEE RI REPORT FOR MORE INFORMATION.
 -DATA DOES NOT INCLUDE VOC/SVOC TICKS.
 -* DATA WAS NOT ANALYZED DUE TO BROKEN BOTTLEWARE.

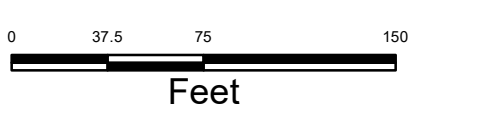
CITY OF ROCHESTER
 BROWNFIELD CLEANUP PROGRAM
 REMEDIAL INVESTIGATION
 REPORT
 PORTION OF FORMER VACUUM OIL REFINERY
 1, 13, 31, 69, AND 75 COTTAGE STREET;
 100 RIVERVIEW PLACE;
 102 VIOLETTA STREET; AND PORTION
 OF 1320 S. PLYMOUTH AVENUE
 ROCHESTER, NEW YORK

GROUNDWATER EXCEEDANCES
 AUGUST 2016 AND DECEMBER 2016



AUGUST SAMPLING ROUND 1		DECEMBER SAMPLING ROUND 2	
AUGUST 17-24, 2016		DECEMBER 5-13, 2016	
VOLATILE ORGANIC COMPOUNDS		VOLATILE ORGANIC COMPOUNDS	
SEMI-VOLATILE ORGANIC COMPOUNDS		SEMI-VOLATILE ORGANIC COMPOUNDS	
METALS		METALS	
POLYCHLORINATED BIPHENYLS		POLYCHLORINATED BIPHENYLS	

- EXCEEDS NY CLASS GA GROUNDWATER STANDARDS
 - DOES NOT EXCEED NY CLASS GA GROUNDWATER STANDARDS
 - NOT DETECTED
 - NOT ANALYZED*



11802.61107
 OCTOBER 2016

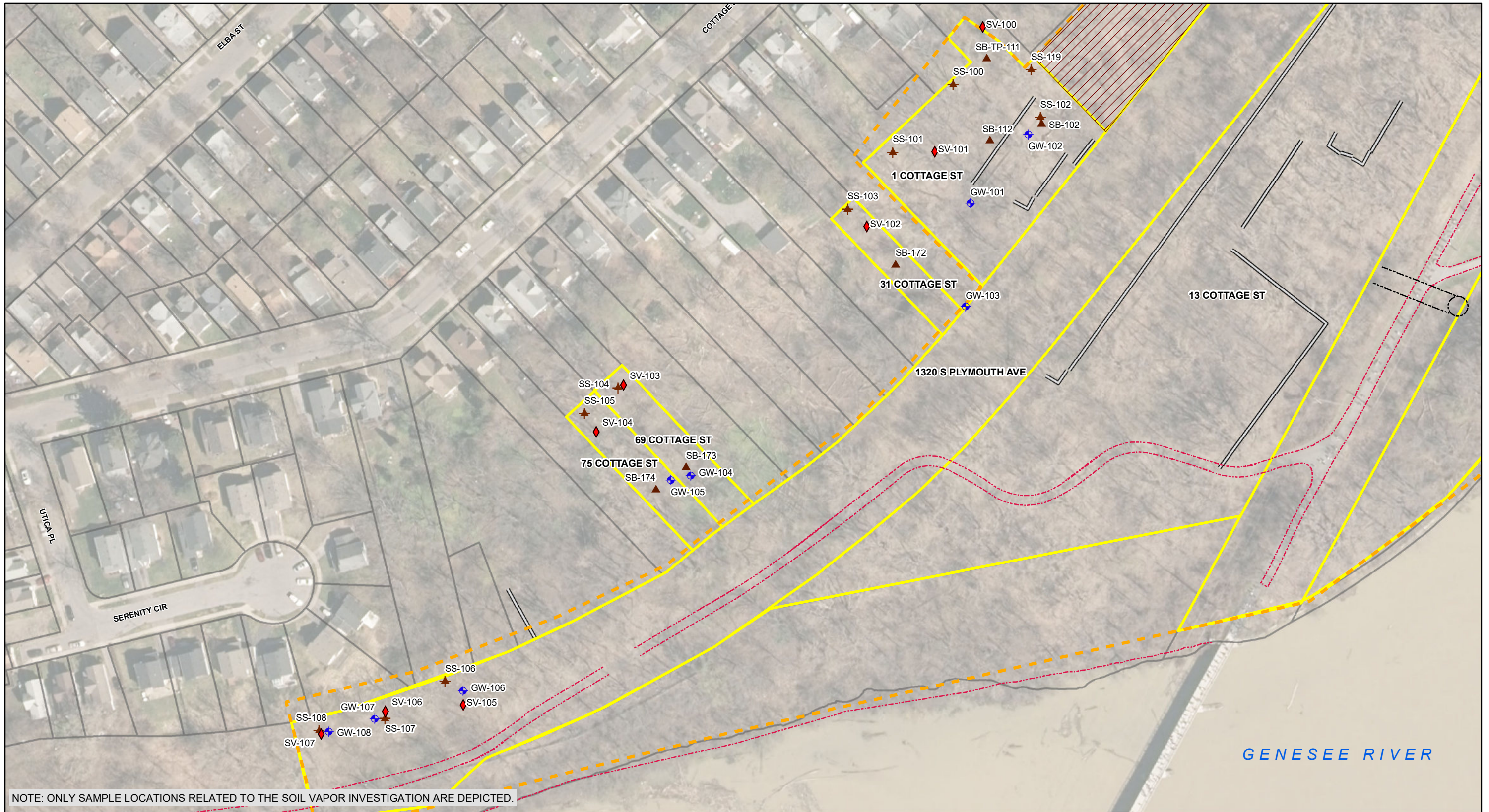


O'BRIEN & GERE ENGINEERS, INC.

I:\Rochester-C.1180261157\Vacuum-Oil-Bop\Docs\DWG\MXD\RIR_2017\GW_Excandance_Rev.mxd

4/18/2018 1:37:00 PM

I:\Rochester-C.11862\61157.Vacuum-Oil-Bcp\Docs\DWG\MXD\RIR_2017\VI_Samp_Locs.mxd



NOTE: ONLY SAMPLE LOCATIONS RELATED TO THE SOIL VAPOR INVESTIGATION ARE DEPICTED.

LEGEND

- OVERBURDEN MONITORING WELL
- SOIL BORING
- SURFACE SOIL
- SOIL VAPOR
- BIKE PATH
- WALL FOUNDATION
- CITY TAX PARCEL
- BROWNFIELD CLEANUP PROGRAM SITE LIMITS (APPROXIMATELY 15.4 ACRES)
- FORMER VACUUM OIL REFINERY SITE (APPROXIMATE)
- NOT PART OF CITY OF ROCHESTER BROWNFIELD CLEANUP PROGRAM SITE; HOWEVER, THESE PARCELS ARE BEING INVESTIGATED BY OTHER ENTITIES.

CITY OF ROCHESTER - BROWNFIELD CLEANUP PROGRAM
REMEDIAL INVESTIGATION REPORT - PORTION OF FORMER VACUUM OIL REFINERY

1, 13, 31, 69, AND 75 COTTAGE STREET;
100 RIVERVIEW PLACE;
102 VIOLETTA STREET; AND PORTION OF
1320 S. PLYMOUTH AVENUE
ROCHESTER, NEW YORK



SOIL VAPOR
SAMPLE LOCATIONS



O'BRIEN & GERE ENGINEERS, INC.

11862.61157
OCTOBER 2019