



**Pont de Rennes
and Browns Race
Rehabilitation
Project**

June 24, 2021

**Public Meeting
No. 1**



Meeting Format

- We would like to take attendance. Please use the “chat” feature to provide your name and address.
- Meeting participants will be muted during the presentation.
- Meeting participants will be able to use the “raise hand feature” at the end of the meeting to ask a question.
- Meeting participants on a phone can dial *9 to “raise your hand” at the end of the meeting to ask a question.

Meeting Agenda

- Introductions
- Project Objectives
- Schedule
- Roc the Riverway Projects
- Pont de Rennes History and Site Conditions
- Conceptual Ideas
- Discussion / Questions

Introductions

Mayor Lovely A. Warren

City of Rochester, Department of Environmental Services

- Norman H. Jones – Commissioner
- Holly E. Barrett, P.E. – City Engineer
- Erik Frisch – Manager of Special Projects (ROC the Riverway)
- Tomas Andino, P.E. – Project Manager (Pont de Rennes)
- Ruben Escobar, P.E. – Project Manager (Browns Race)

New York State Department of Transportation

- Jay R Reisinger, P.E. – Regional Local Project Liaison

Design Team

- Labella Associates
- Trowbridge Wolf Michaels Landscape Architects
- Lu Engineers
- Baptiste Engineers
- Ravi Engineering and Land Surveying

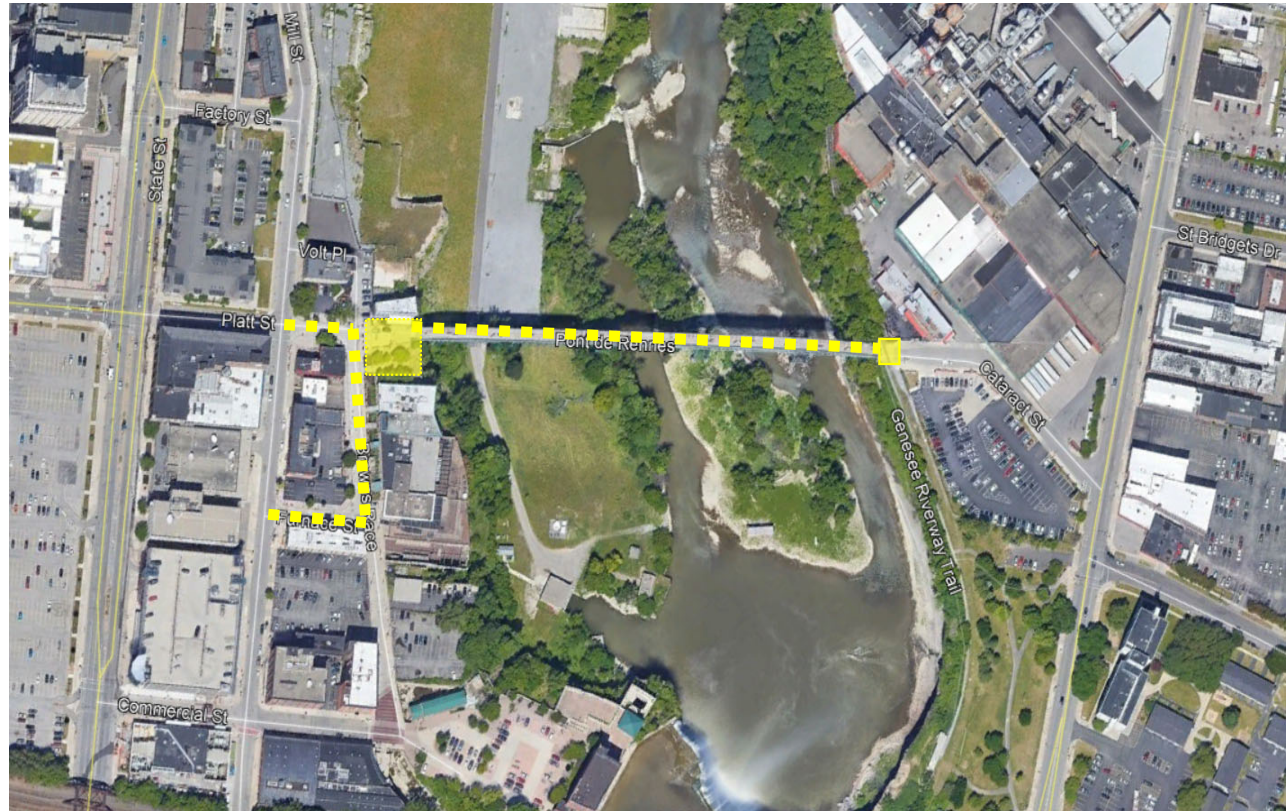
Project Objectives

Pont de Rennes

- In-depth bridge inspection
- Structural replacement and repairs
- Revitalize!!!
 - Creative lighting
 - Public art
 - Historical Features
 - Plantings and Foliage
 - Wayfinding

Browns Race

- Restoration of historic street
- Sidewalk restoration
- Upgrades to curb ramps
- Replace damaged and missing bollards, bike racks and light fixtures
- Drainage improvements

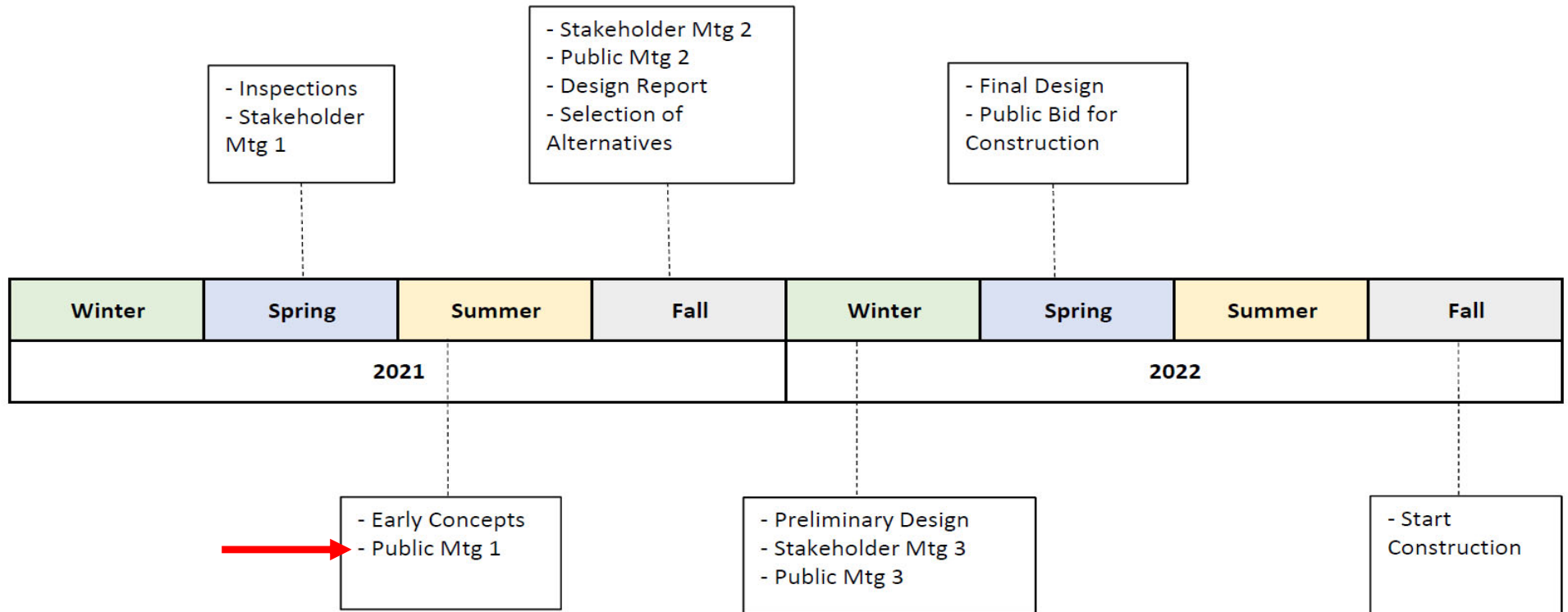


TOTAL PROJECT BUDGET
Pont de Rennes=\$9.0M
Browns Race=\$1.5M

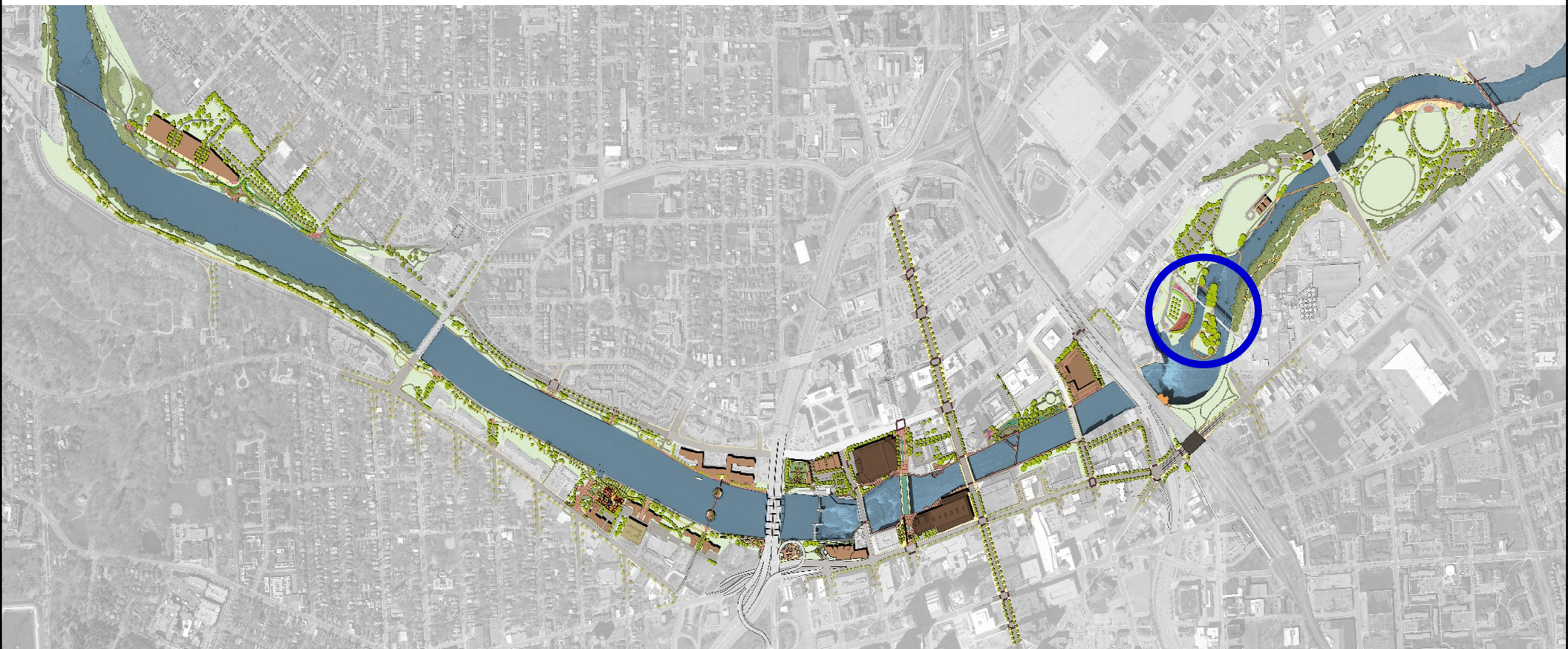
Equity

- Supports the needs of the public and ensure everyone's views and concerns are heard during the design process.
- Support existing residents and businesses.
- Create new job opportunities.
- Promote bicycle and pedestrian use by enhancing connections to the Genesee Riverway Trail.
- Maintain and enhance access to recreation and open space for all residents.

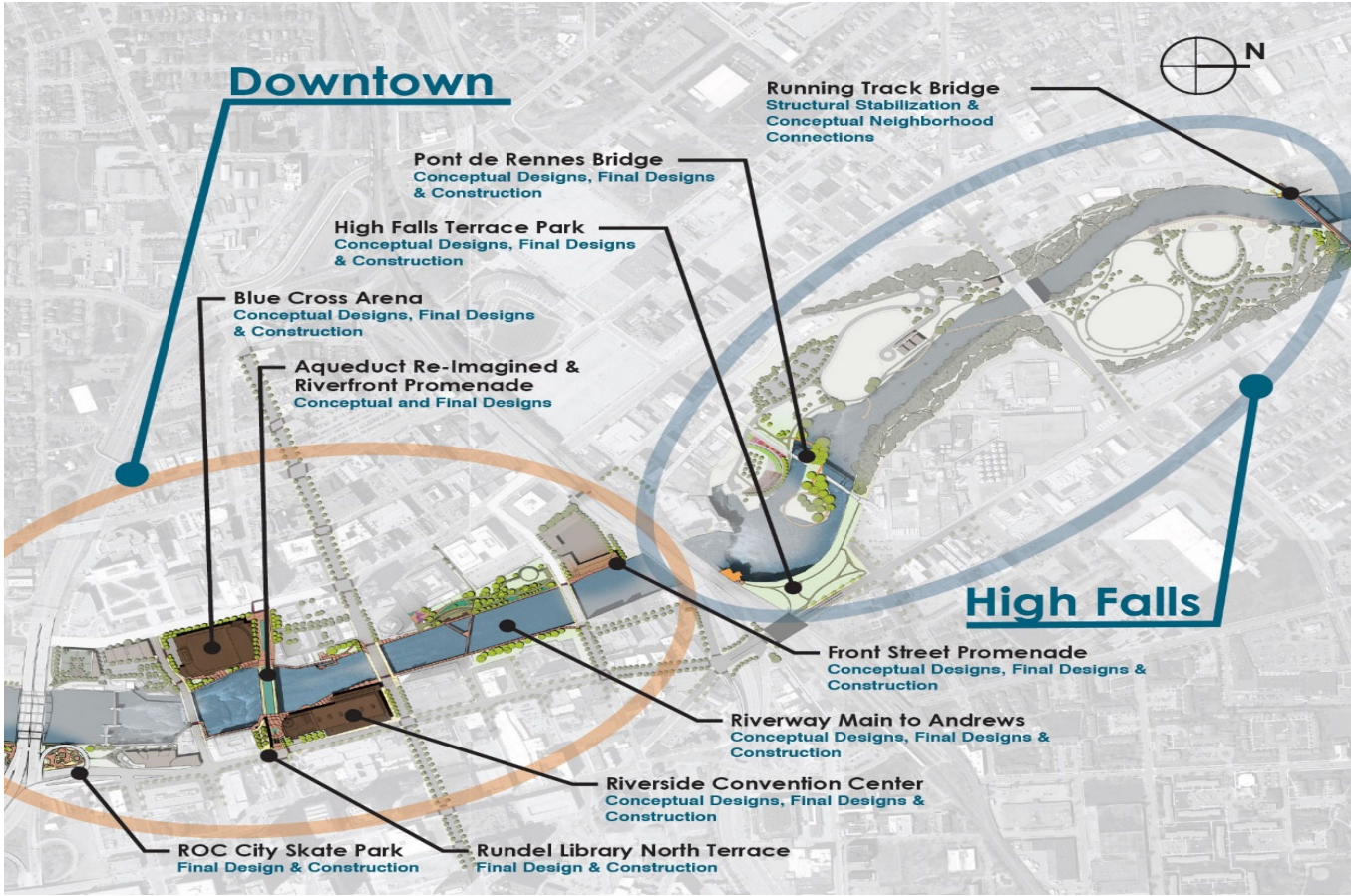
Schedule



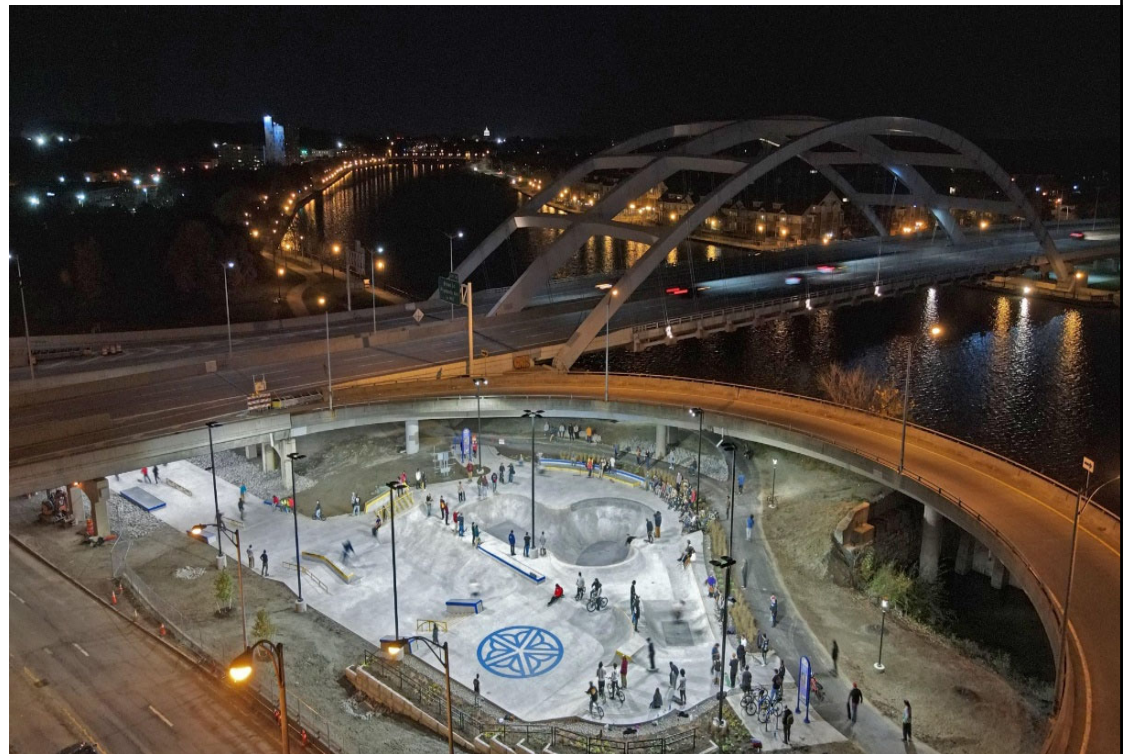
Project Context: ROC the Riverway



ROC the Riverway: Downtown & High Falls



ROC the Riverway – Completed Projects

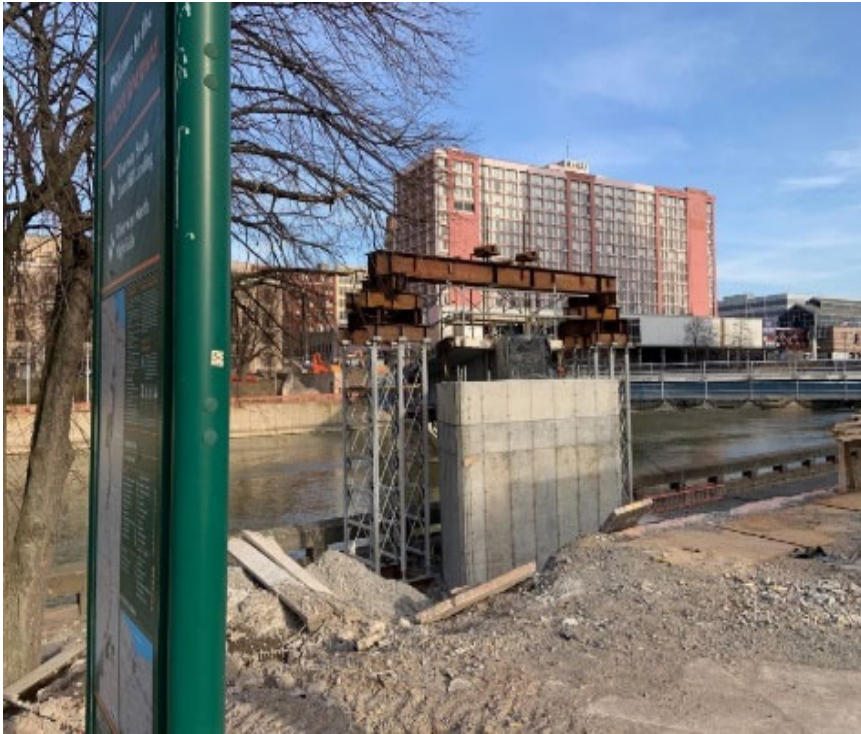


The Promenade at Erie Harbor
Completed: September 2019

ROC City Skate Park
Completed: November 2020



ROC the Riverway – Under Construction



Charles Carroll Plaza
Proposed Completion: 2023



ROC the Riverway – Under Construction



Rundel Library North Terrace
Proposed Completion: 2022



ROC the Riverway – Under Construction



West River Wall – Corn Hill Segment
Proposed Completion: 2022



ROC the Riverway – Upcoming Projects



VIEW OF MAIN ENTRY WAY TO TRAIL AND CONNECTION TO
POINT DE RENNES BRIDGE



St Paul Underpass Improvements

Completion Date: TBD



ROC the Riverway – Upcoming Projects



Genesee Gateway Park / Erie Harbor Enhancements Phase 2
 Completion Date: end 2023

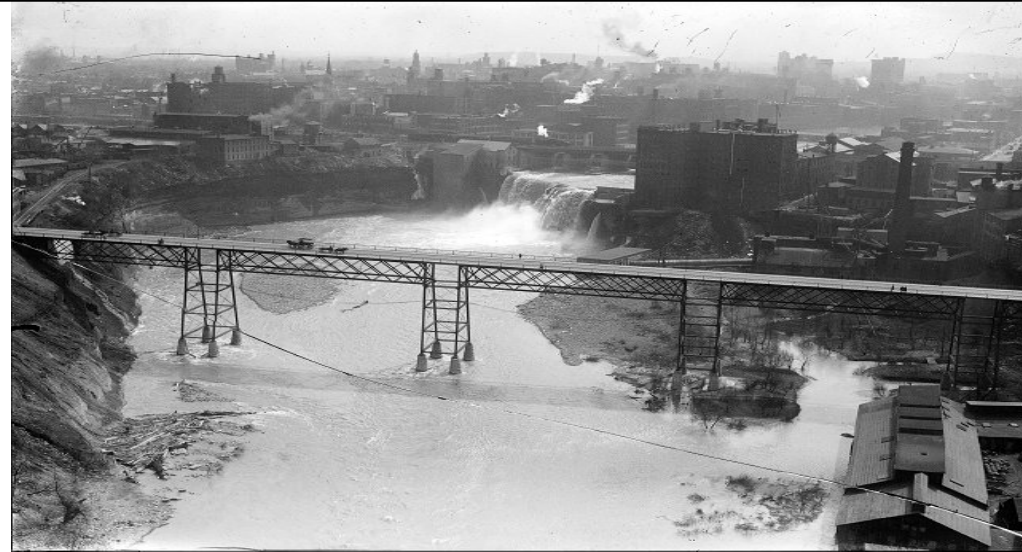


History & Site Conditions

LaBella Associates

History – Pont de Rennes

- Built in 1891
- Designed by Leffert L. Buck
- Originally known as the Platt Street Bridge carrying vehicular traffic
- Closed to vehicular traffic in 1970's
- Converted to a pedestrian bridge in 1980
- Renamed after Rochester's first Sister City Rennes, France
- Listed on the National Register of Historic Places



From the Albert R. Stone Negative Collection, Rochester Museum & Science Center, Rochester, N.Y.



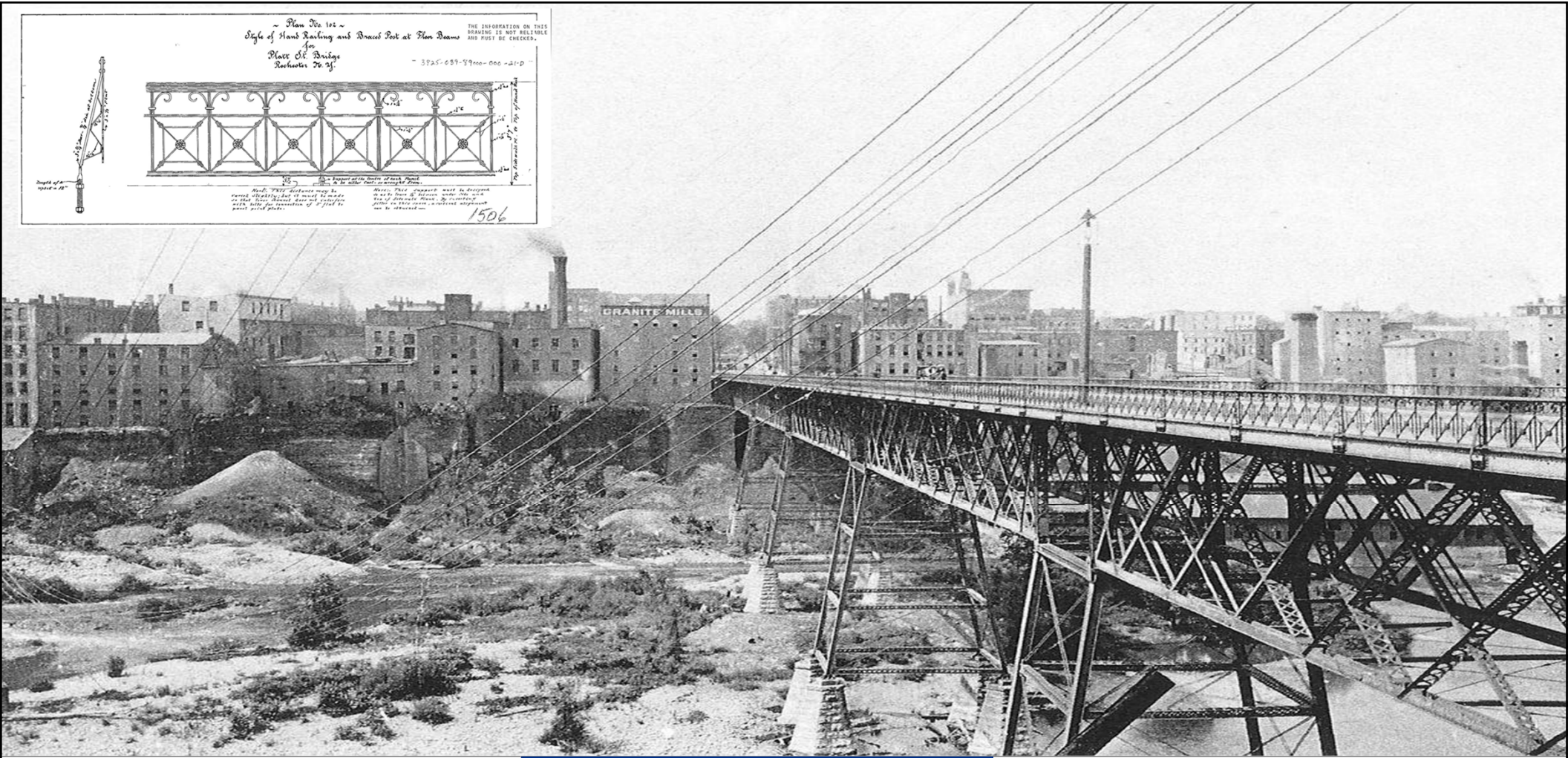
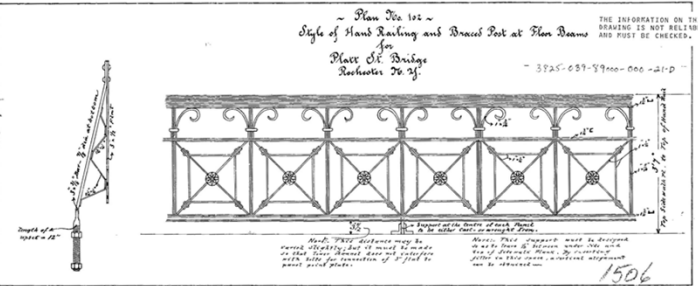


Platt Street Bridge.

Rochester, New York

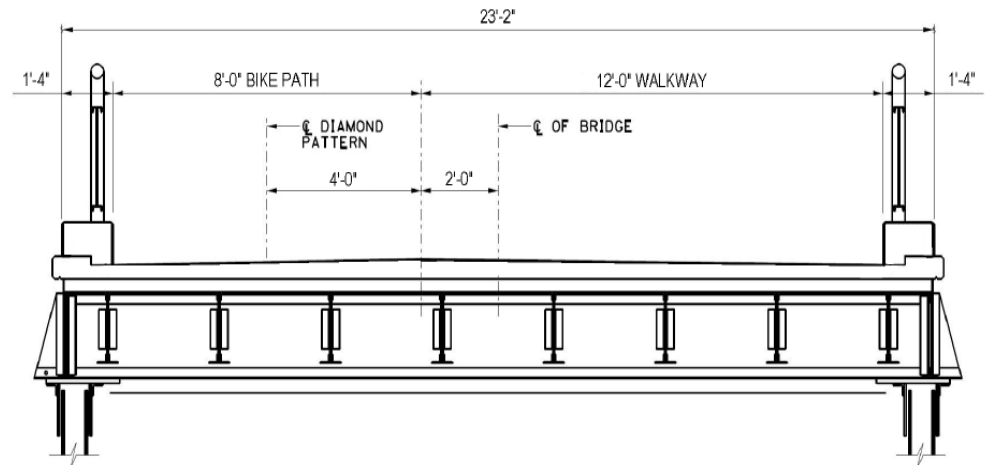


**Department of
Transportation**

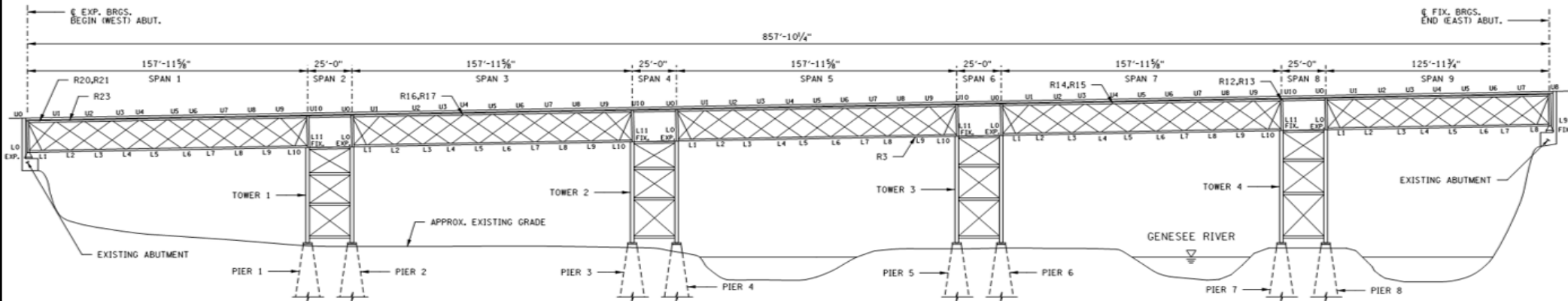


Existing Geometry

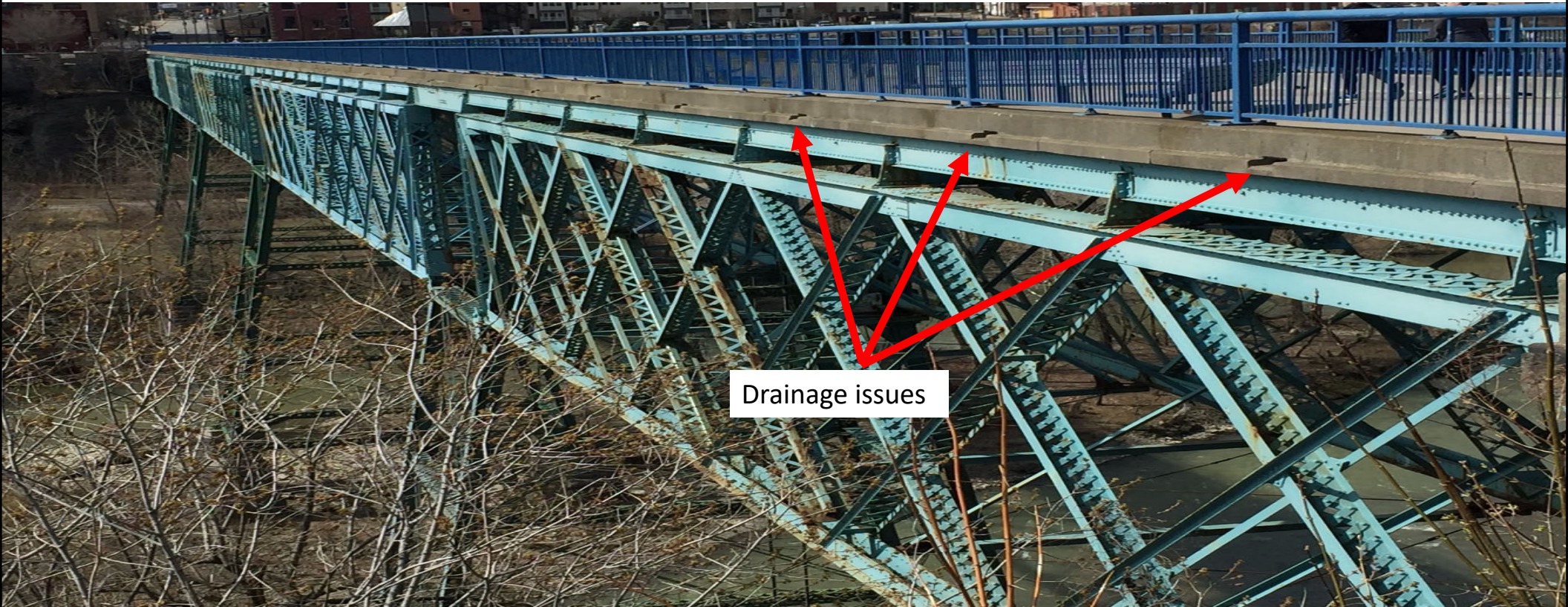
- 858 ft long bridge
- 20 ft wide (12 ft walkway, 8 ft bike path)
- 100 ft above water
- 2% Grade



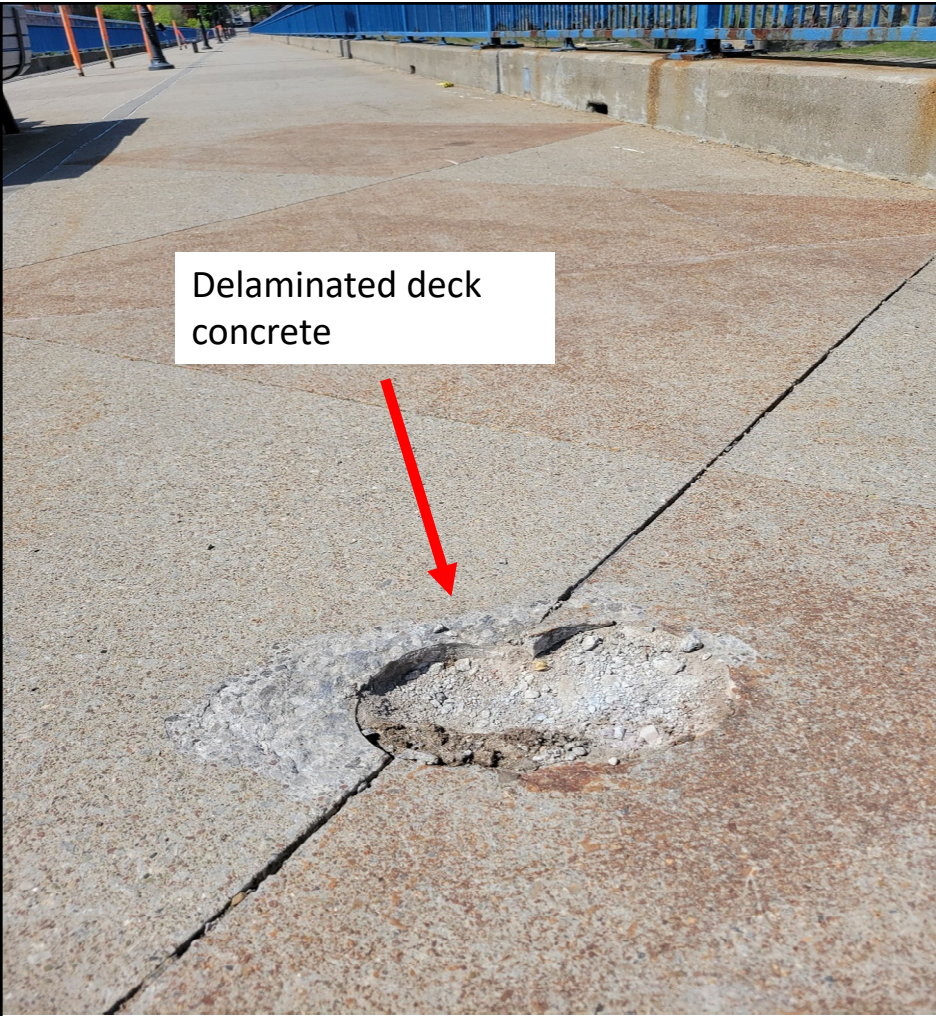
TYPICAL EXISTING BRIDGE SECTION



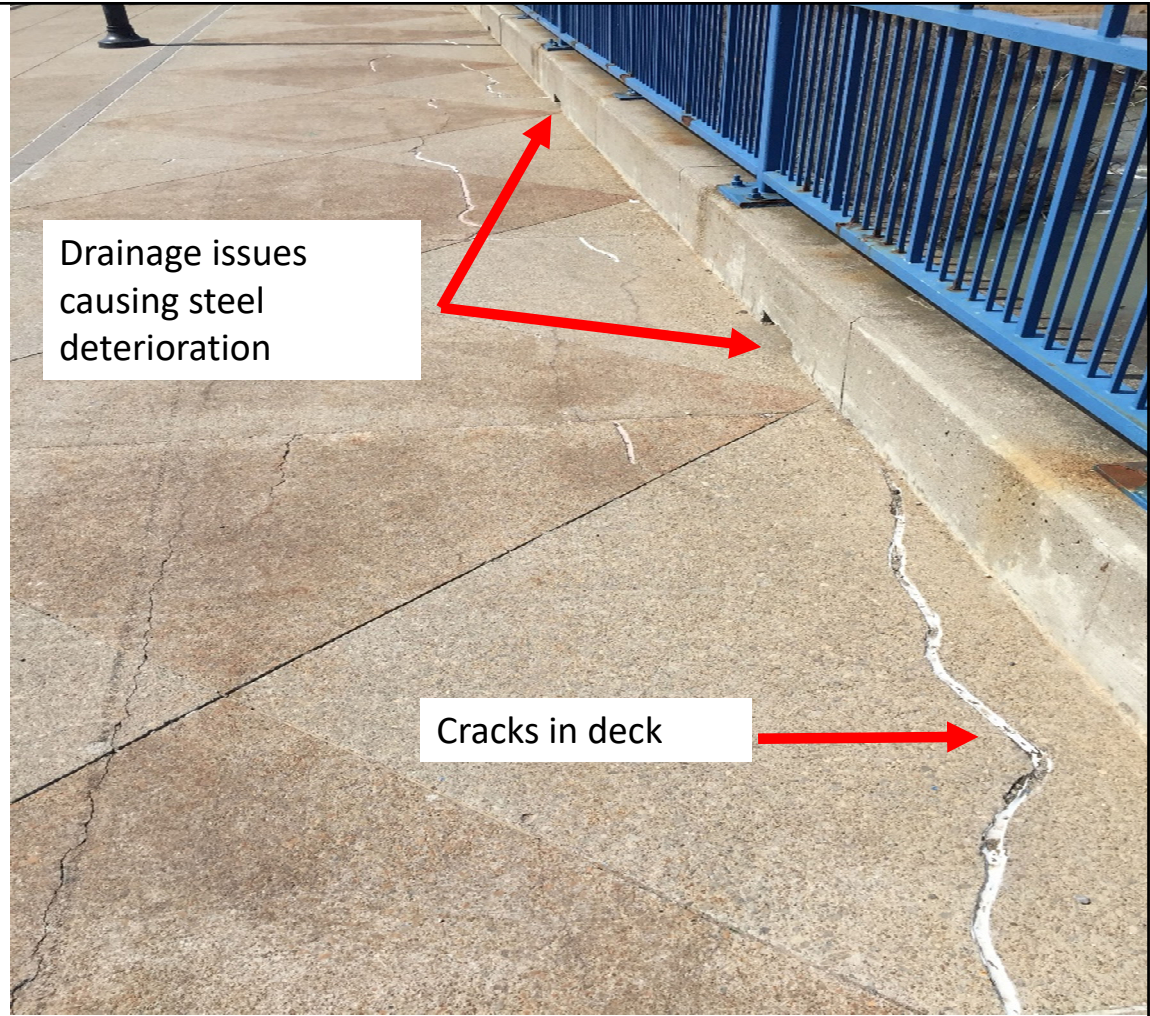
Site Conditions



Drainage issues

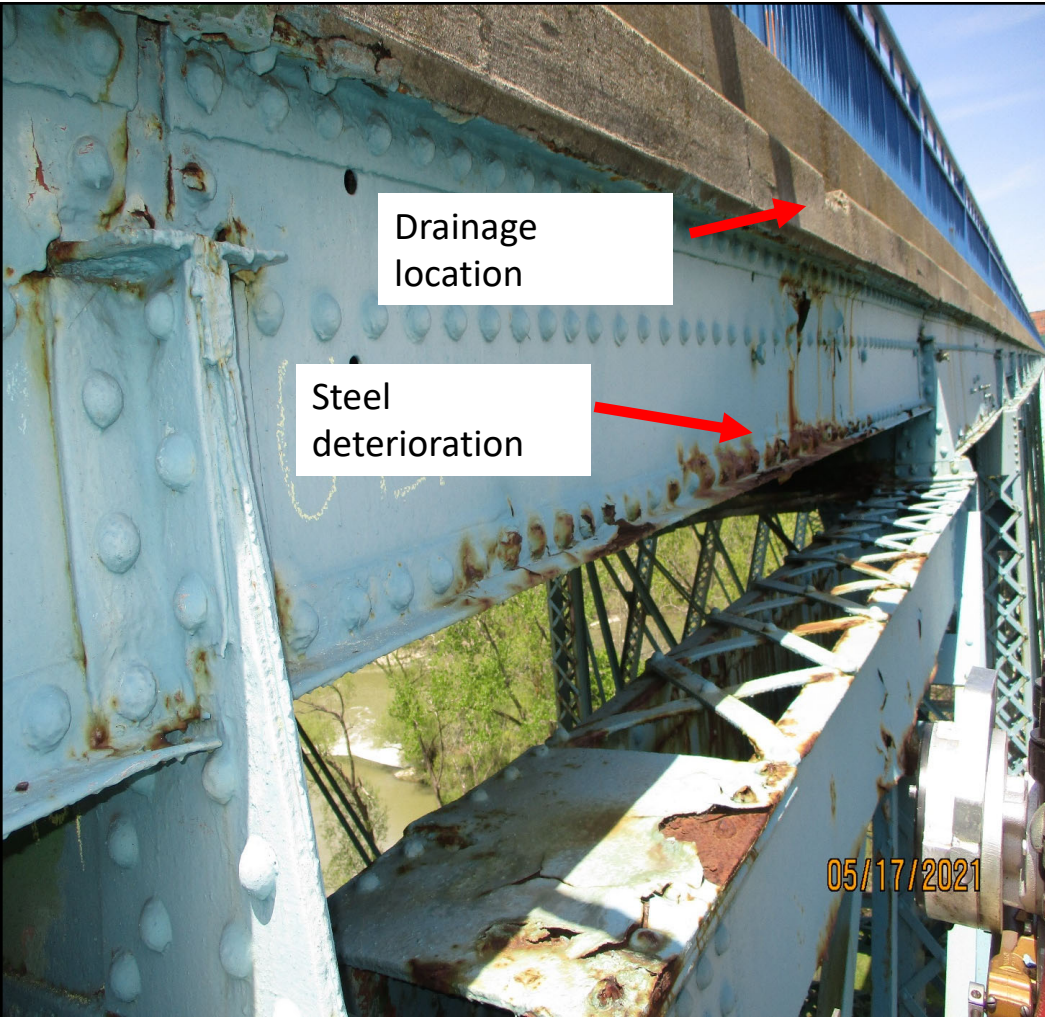


Delaminated deck concrete



Drainage issues causing steel deterioration

Cracks in deck



Drainage location

Steel deterioration

05/17/2021



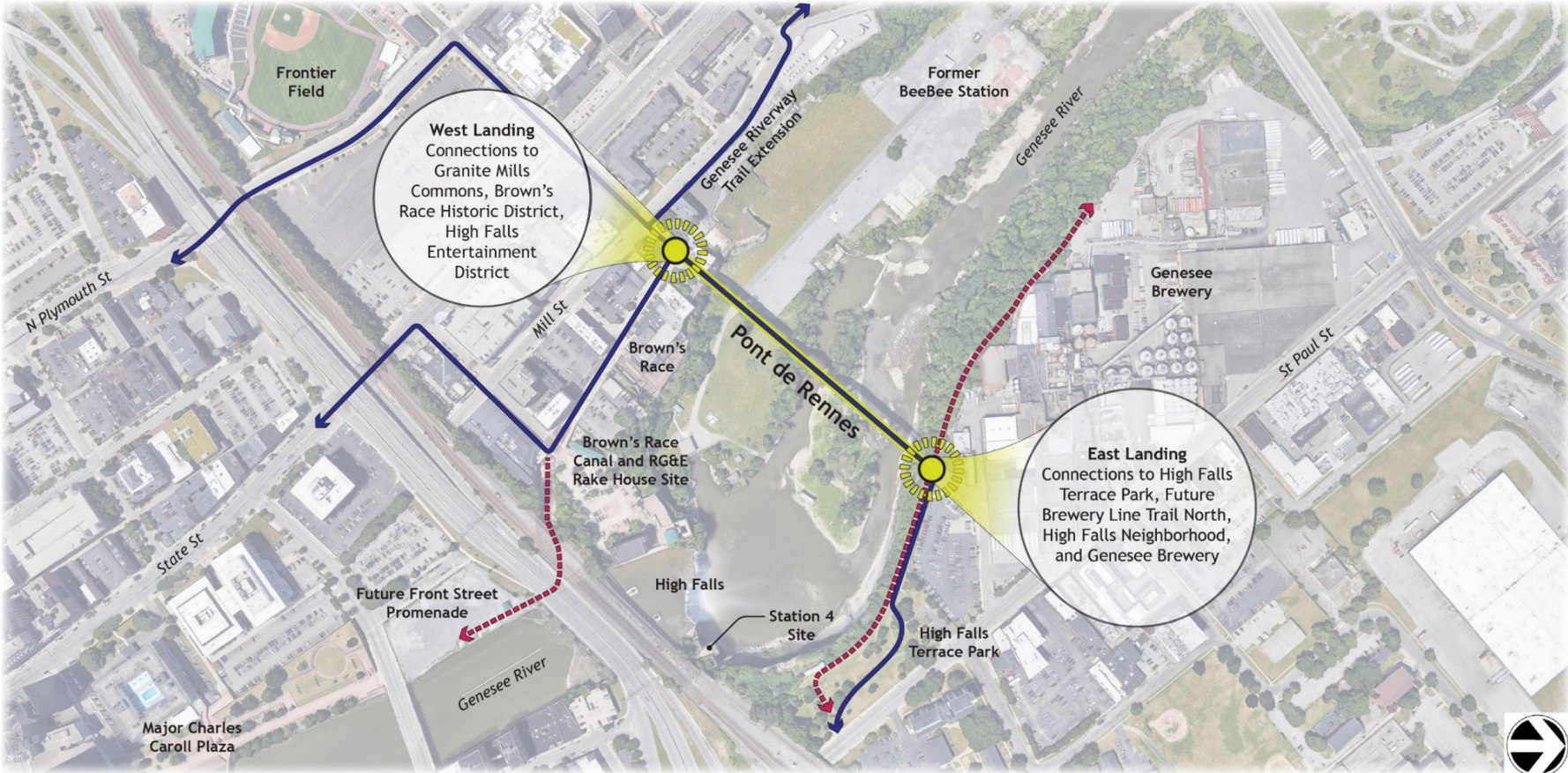
Typical steel deterioration and coating failure underdeck

05/10/2021

Conceptual Ideas

Trowbridge Wolf Michaels Landscape Architects

Pont de Rennes: Context



Pont de Rennes: Granite Mills Commons



Pont de Rennes: East Approach



Brewery Line Trail Coordination

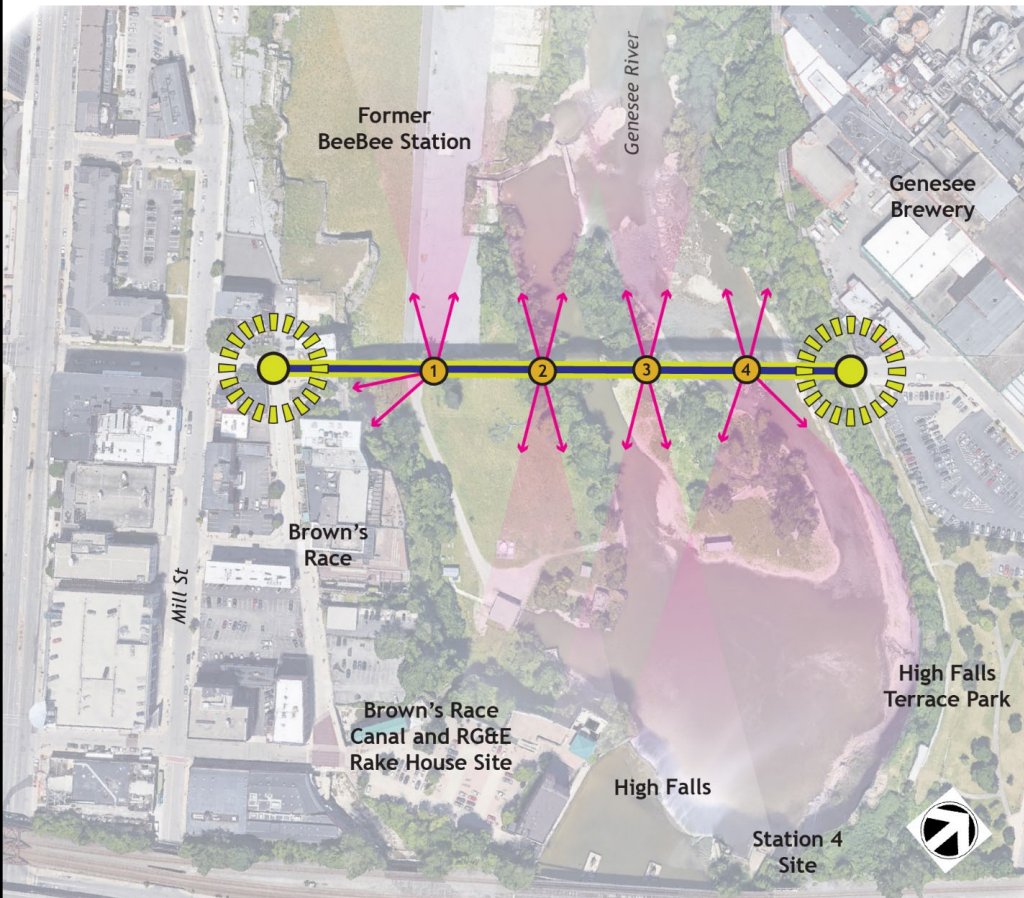


VIEW OF MAIN ENTRYWAY TO TRAIL AND CONNECTION TO
PONT DE RENNES BRIDGE

Brown's Race Coordination



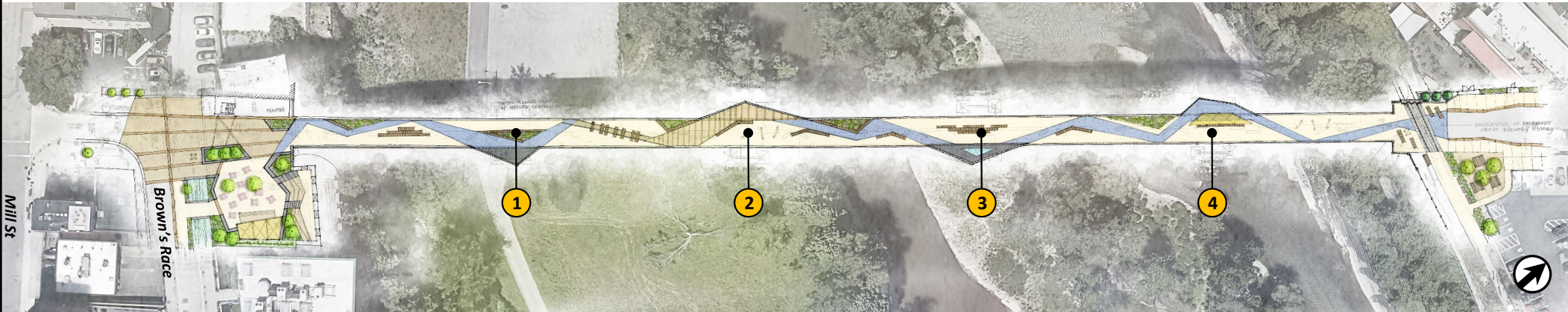
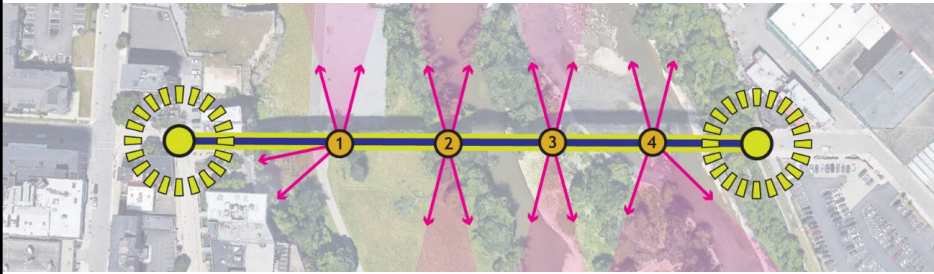
Concept Diagram: Nodes with Preferred Views



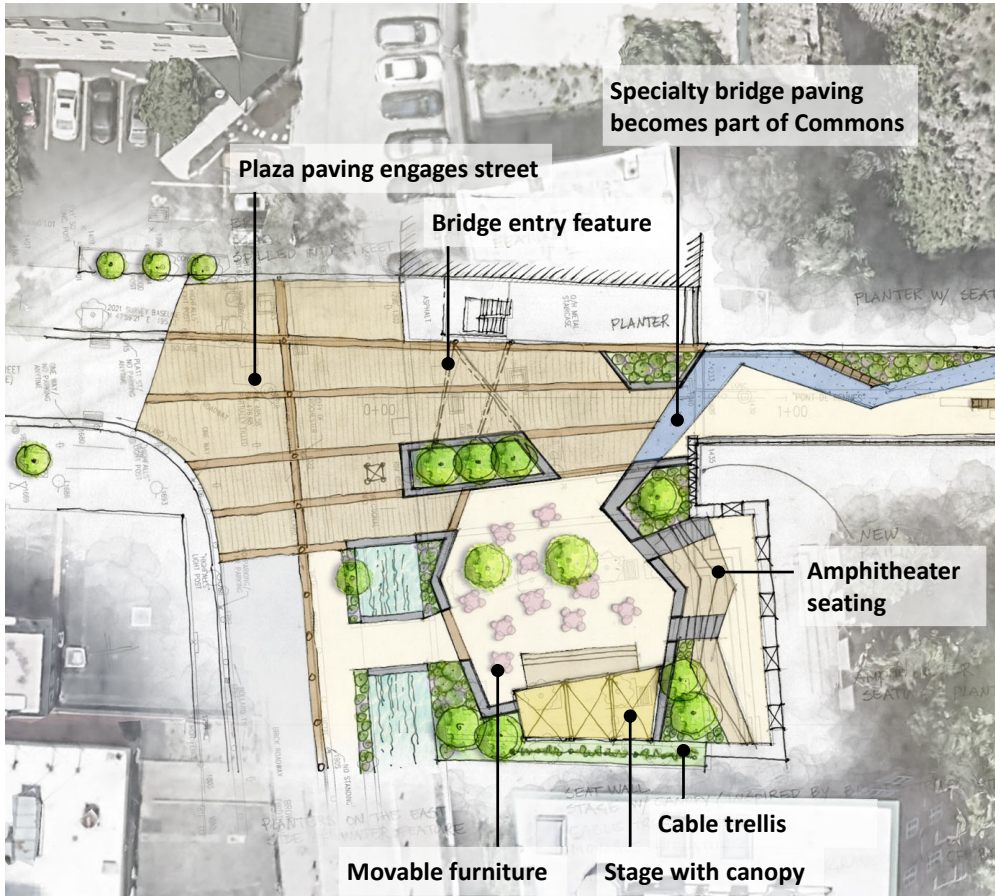
Views as Opportunities for Interpretation

- Tower 1 – Former BeeBee Station, Tail races at the near-gorge face
- Tower 2 – Former BeeBee Station, Genesee River, RG&E Rake House Site
- Tower 3 – High Falls, Genesee River
- Tower 4 - High Falls, Genesee River, Station 4 Site, gorge rim

Concept 1



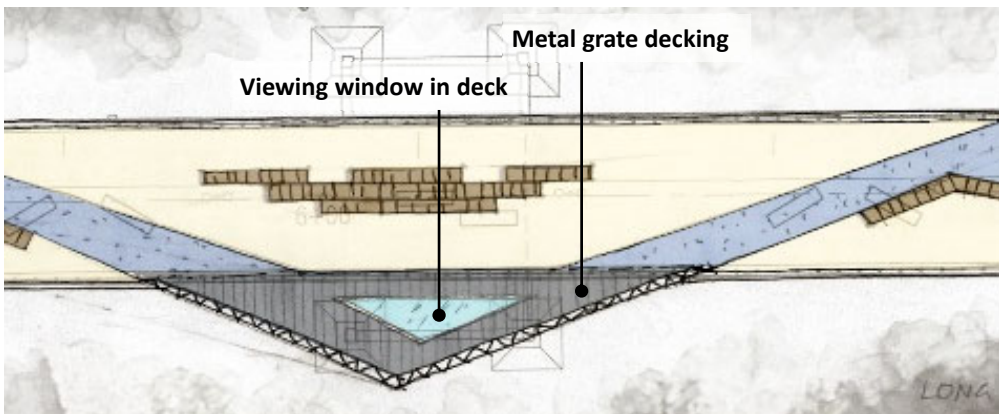
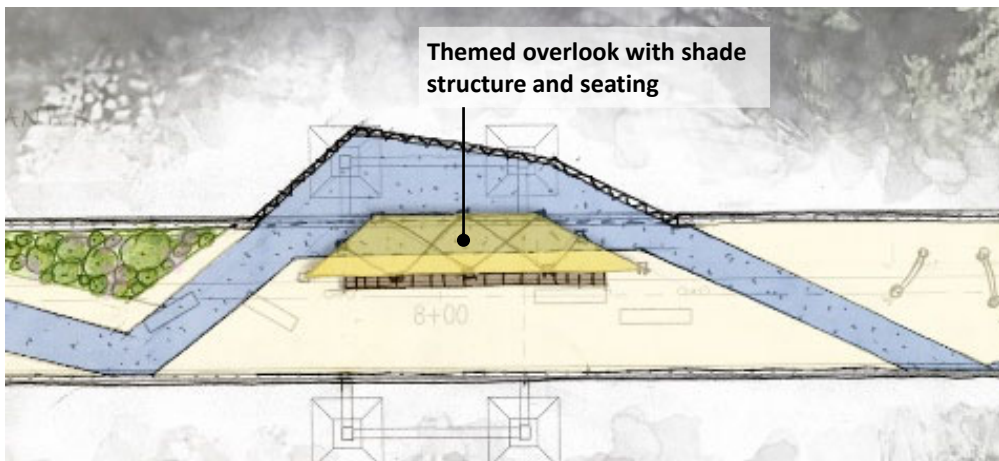
Granite Mills Commons



Granite Mills Commons



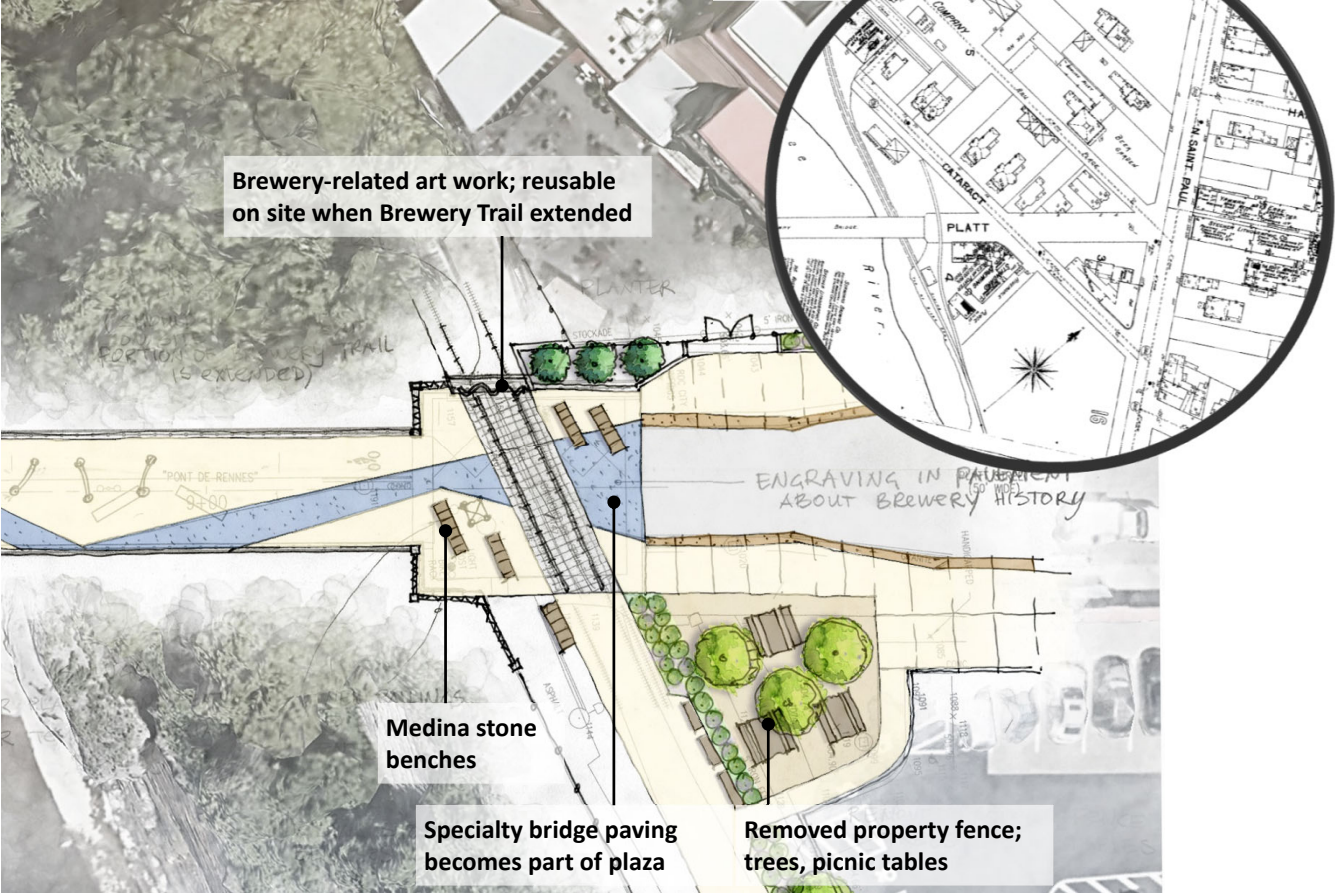
Overlooks



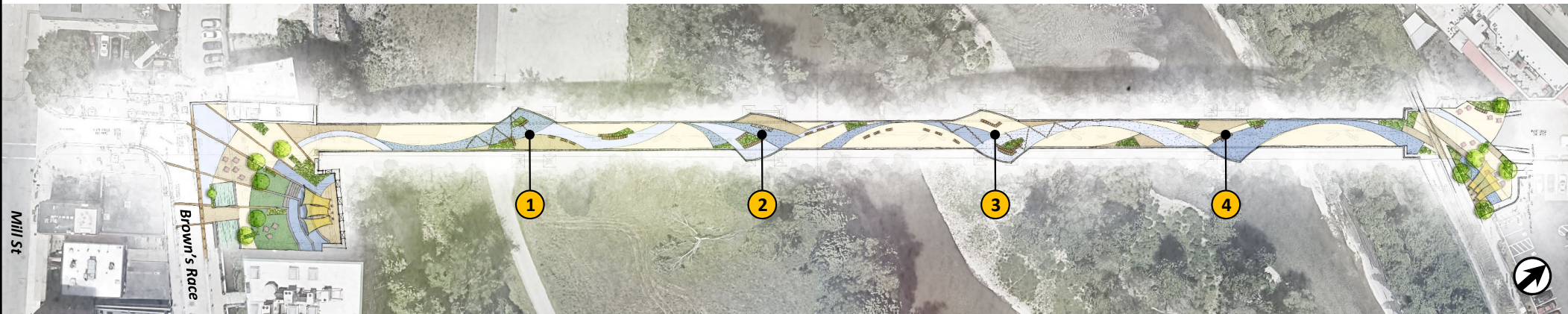
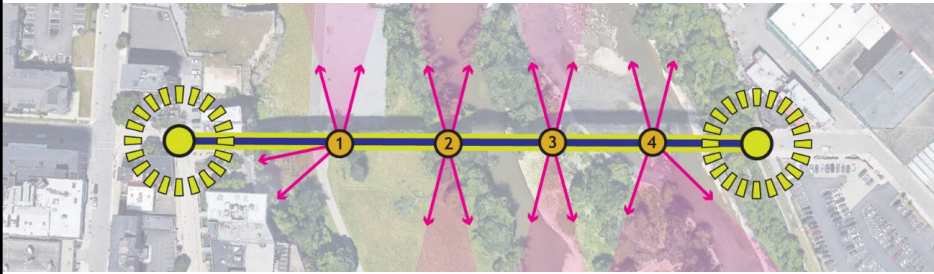
Overlooks



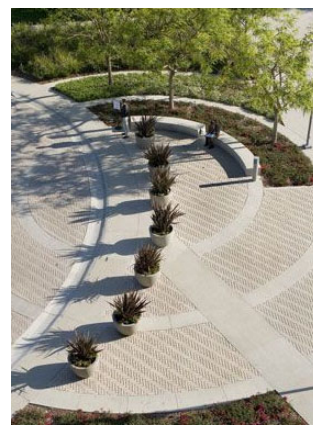
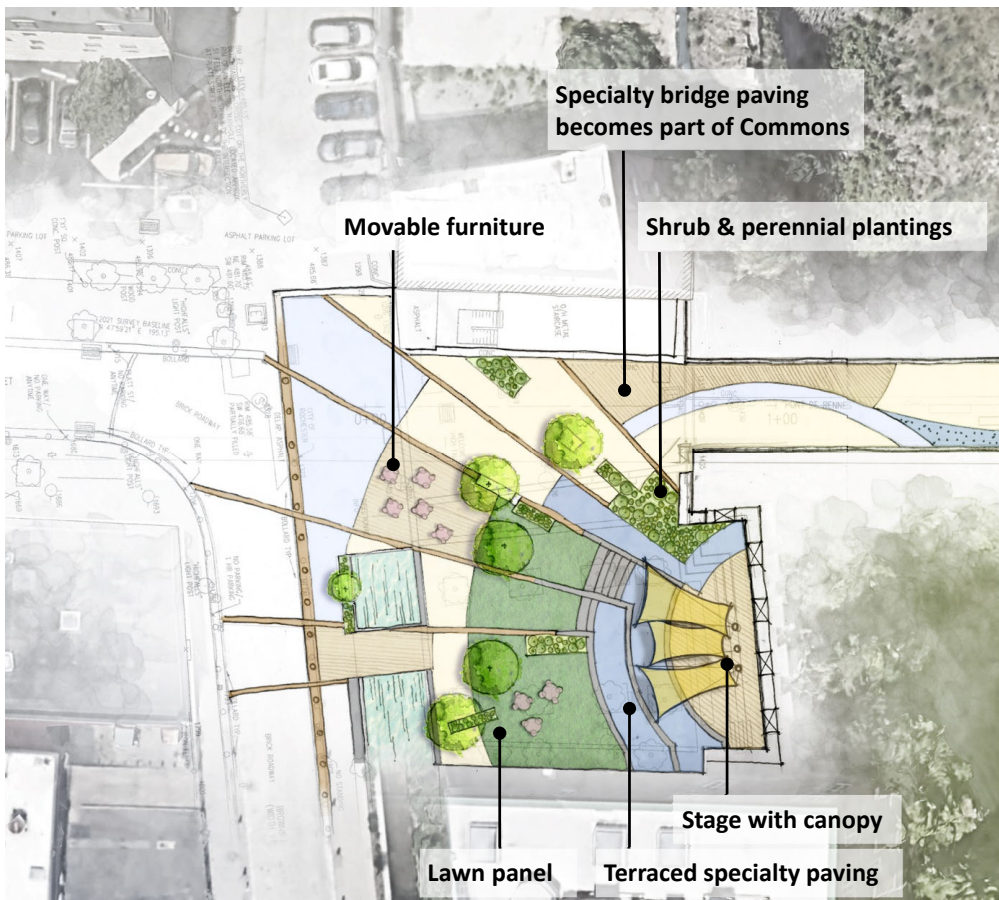
Brewery Point



Concept 2



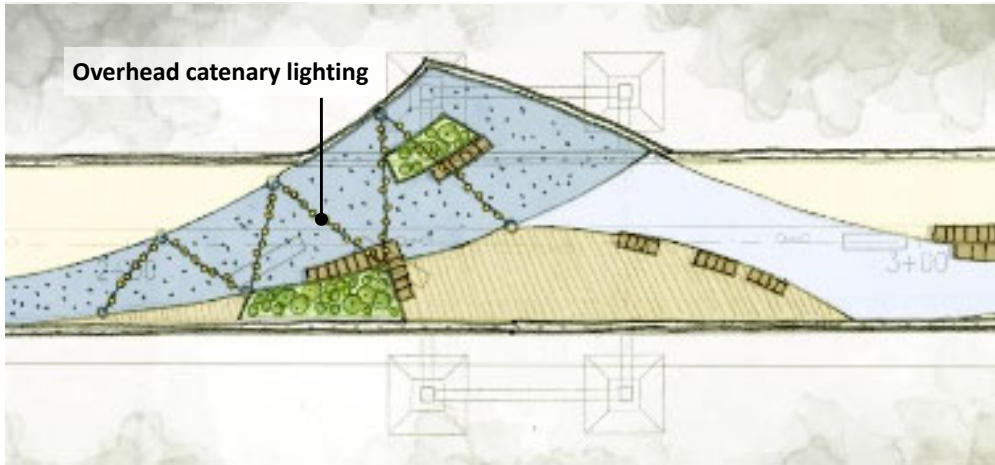
Granite Mills Commons



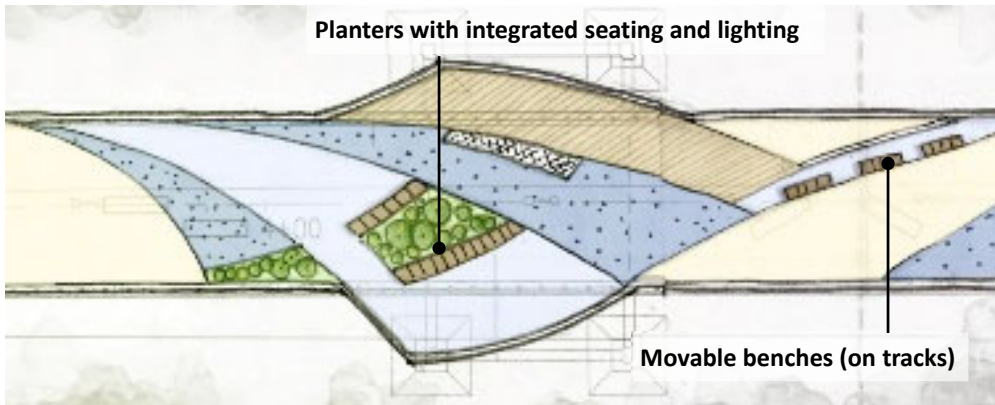
Granite Mills Commons



Overlooks

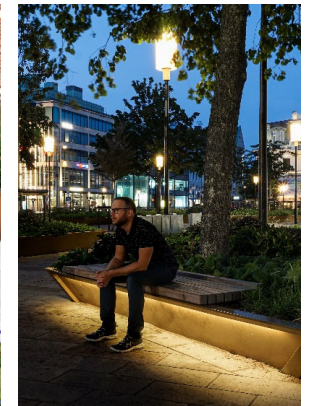


Overhead catenary lighting

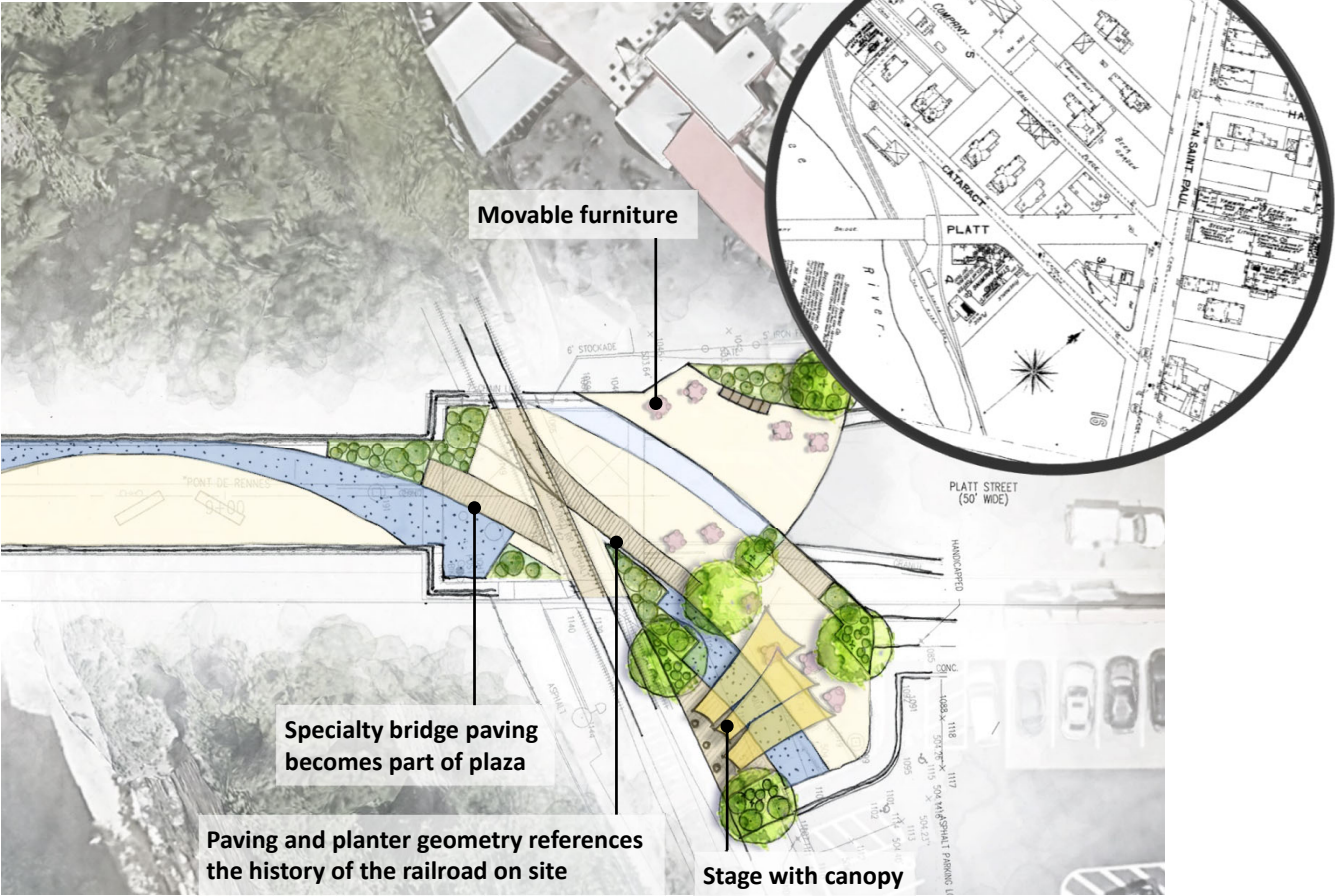


Planters with integrated seating and lighting

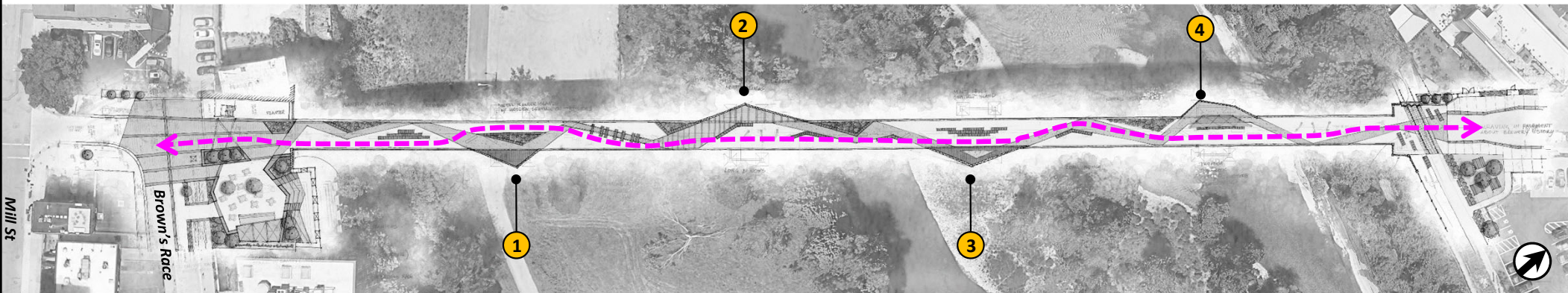
Movable benches (on tracks)



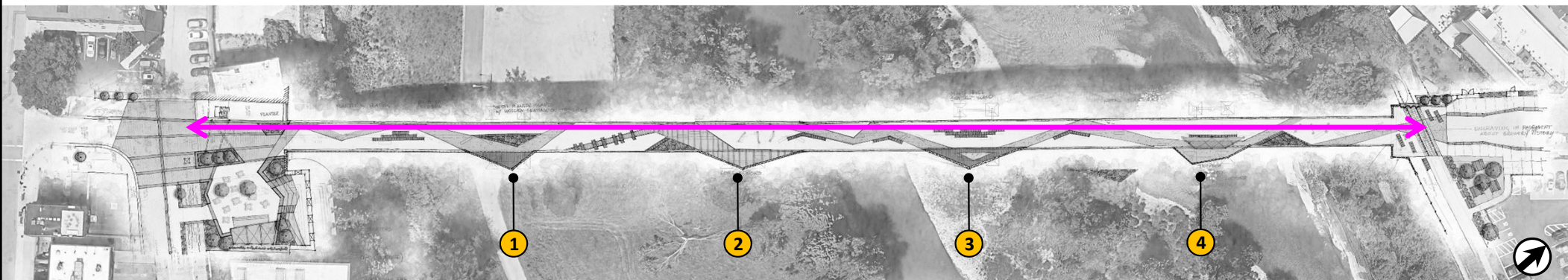
Brewery Point



Bicycle Circulation Approaches



Approach 1: Bridge as Plaza; Bikes Dismount; Amenities Zone Throughout; Overlooks on Both Sides.

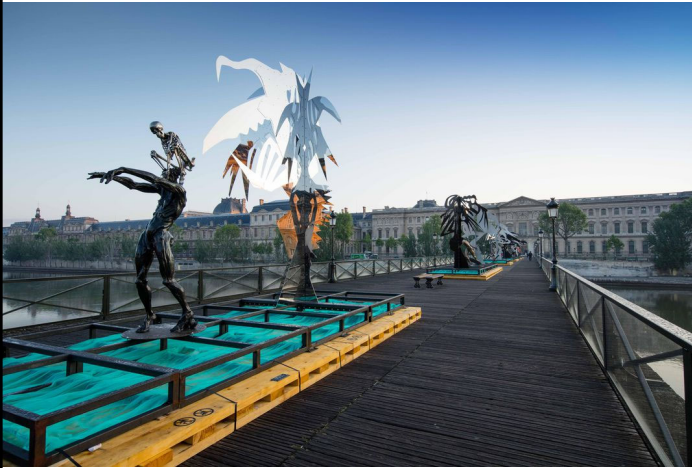


Approach 2: Dedicated Bike Lane; Amenities Zone on One Side; Overlooks Shift to One Side.

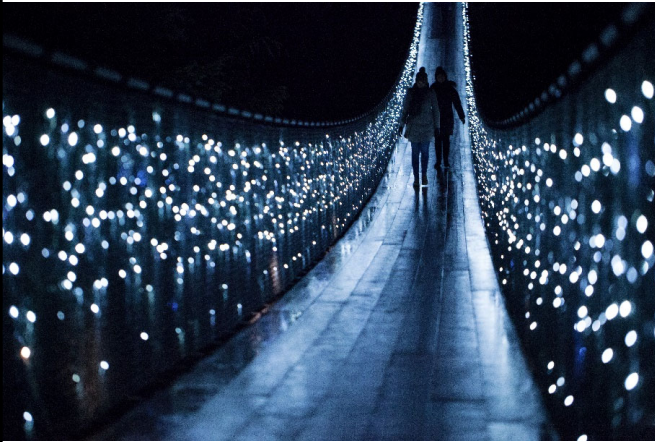
Consistency of Materials



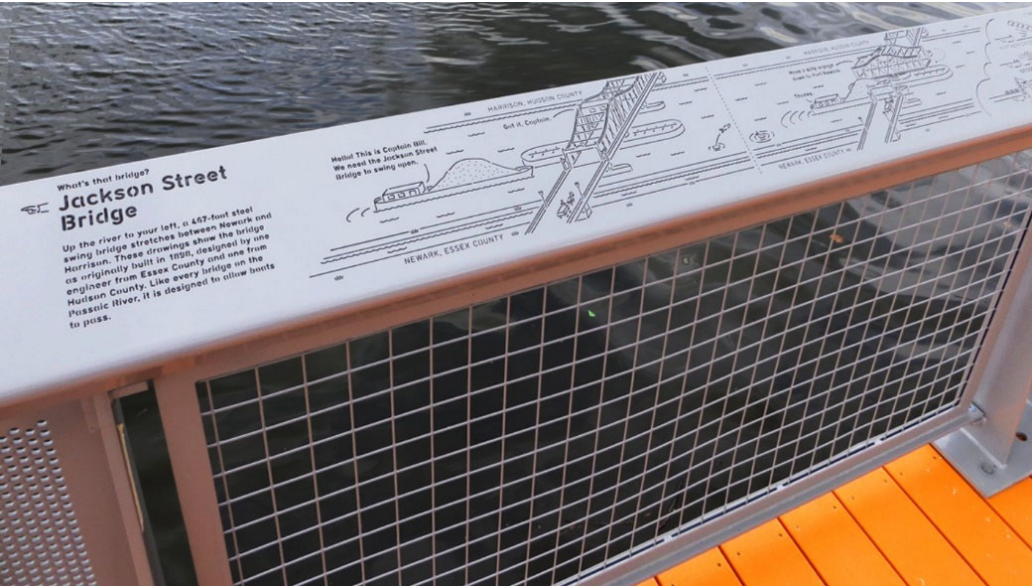
Elements of Play / Unique Attractions



Elements of Play / Unique Attractions



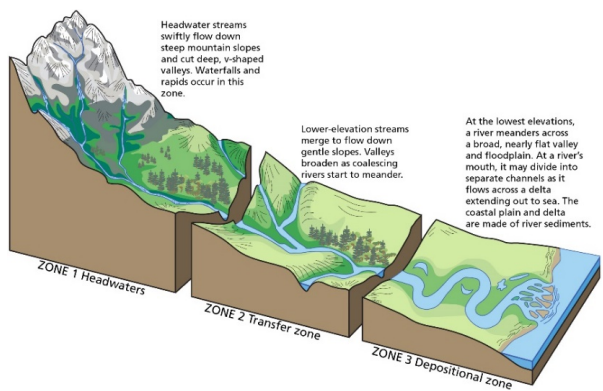
Interpretation



Interpretation



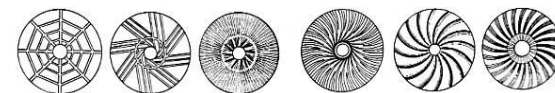
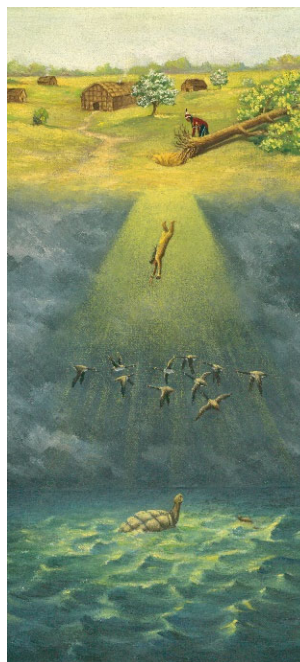
Interpretation – Possible Themes



Geology, Fluvial Geomorphology, Gorge Ecology



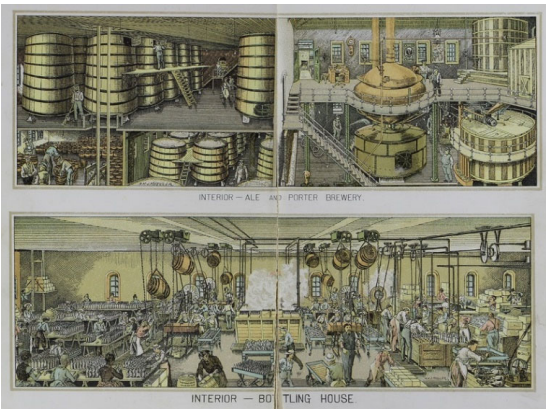
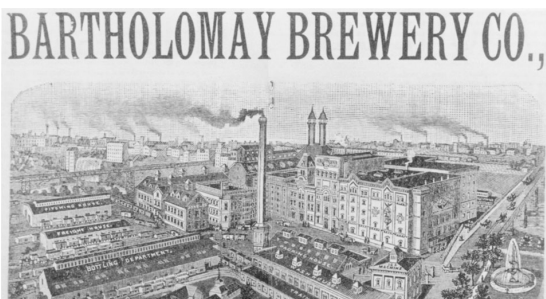
Haudenosaunee Heritage



SPECIMENS OF ROCHESTER MANUFACTORIES.
The mills of Edwin and Elias Avery—front on Brown's Race, rear on the river, below the Main or Middle Falls—rear wall 144 feet high.

Industry & Agriculture

Interpretation – Possible Themes

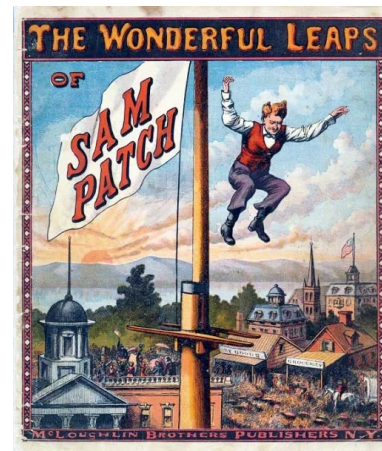


Brewing History

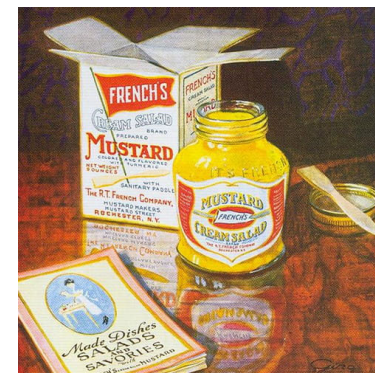
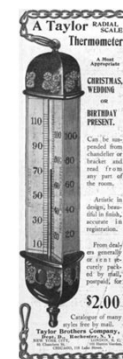


RG&E Beebe power station prior to demolition, Rochester, NY, Summer 2016. [IMAGE: Anonymous]

Power Generation



Believe it or Not!



Q&A

- What is ***your*** vision for the Pont de Rennes Bridge?
 - How often do you walk or bike across the bridge, and for what purpose? (i.e., commuting to work, attending an event, etc.)
 - What good memories do you have of the Pont de Rennes?
 - What events have you attended in the past?
 - What potential events could occur on or near the Pont de Rennes?
 - Who are potential partners for events, art installations, stewardship?
 - What would bring you to the Pont de Rennes time and again?

Q&A

- What design features are most important to you?
 - Benches
 - Shade
 - Art
 - Plantings
 - Something for kids to do
 - An interactive element
 - Performance space

Q&A

- What are the top 4 interpretive themes to explore in the design?
 - Grain milling
 - Brewing history
 - Historic industry
 - Genesee River ecology
 - Former BeeBee Station/power generation
 - Haudenosaunee heritage
 - Unusual Rochester history