



**Department of
Environmental
Conservation**

Where to Find Information

Access project documents through the DECinfo Locator and at these location(s):

<https://www.dec.ny.gov/data/DecDocs/828204/>

*(*Repositories are temporarily unavailable due to COVID-19 precautions. If you cannot access the online repository, please contact the NYSDEC project manager listed below for assistance)*

Central Library of Rochester and Monroe County

115 South Avenue, Rochester NY 14604
(585) 428-7300

Who to Contact?

Comments and questions are welcome and should be directed as follows:

Project-Related Questions

Salvatore F. Priore, P.E.
NYSDEC, DER – Remedial Bureau C
625 Broadway, 12th Floor
Albany NY 12233-7014
(508) 402-9665
salvatore.priore@dec.ny.gov

Project-Related Health Questions

Anthony Perretta
NYSDOH
Corning Tower, Room 1787
Albany, NY 12237
(518) 402-1365
bee@health.ny.gov

For more information about New York's Manufactured Gas Plant Program, visit:

www.dec.ny.gov/chemical/24904.html

FACT SHEET

Manufactured Gas Plant Program

**RG&E - East Station Former
Manufactured Gas Plant
(MGP) Site
Suntru Street
City of Rochester, NY 14604**

**SITE No. 828204
NYSDEC REGION 8**

June 2022

Notice of Availability: Record of Decision

The New York State Department of Environmental Conservation (NYSDEC) in consultation with the New York State Department of Health (NYSDOH) announces that it has issued the Record of Decision (ROD) for the Former Rochester Gas and Electric (RG&E) East Station Manufactured Gas Plant (MGP) site ("site") located at Suntru Street, City of Rochester, Monroe County, New York. Please see the map for the site location.

The ROD presents the remedy selected to address contamination related to the site and why the remedy was chosen. The ROD also includes a Responsiveness Summary that addresses public comments received about the proposal. The estimated cost to implement the remedy is \$47,747,000.

On April 13, 2022, NYSDEC held a virtual public meeting presenting the Proposed Remedial Action Plan (PRAP) for the site. The comments received at this meeting and during the public comment period (March 30, 2022 through April 28, 2022), along with the administrative record, were considered in preparing the final ROD for the site.

- Access the ROD, PRAP and other project documents online through the DECinfo Locator: <https://www.dec.ny.gov/data/DecDocs/828204/> .
- Documents also are available at the location(s) identified at left under "Where to Find Information."
- Information concerning the Project can be directed to the NYSDEC project manager listed under Project-Related Questions in the "Who to Contact" area at left.

The site is the subject of a multi-site Order on Consent between RG&E and NYSDEC.

MANUFACTURED GAS PLANT PROGRAM

Record of Decision: The remedy selected for the site includes:

- Excavating sediment containing MGP contamination from the Genesee River.
- Excavating MGP-impacted soil to approximately 30 feet below ground surface (ft bgs) at MGP source areas on the Former MGP Site.
- Excavating MGP-impacted soil to approximately 24 ft bgs at an MGP-impacted area of the adjacent B&L Property.
- Stockpiling and sampling the upper 10 feet of soil to confirm compliance with applicable regulations for reuse on-site, with the concurrence of NYSDEC.
- Treating or disposing of contaminated soil and sediment off-site.
- Importing clean material that meets the established Soil Cleanup Objectives for use as backfill and the installation of a two-foot vegetated clean soil cover on-site.
- Implementing monitored natural attenuation of groundwater.
- Continuing non-aqueous phase liquid (NAPL) monitoring and recovery.
- Implementing a Health and Safety Plan and Community Air Monitoring Plan during all ground intrusive activities.
- Implementing a Site Management Plan (SMP); and,
- Recording of an Environmental Easement to document the engineering controls, to require compliance with the SMP and to ensure proper use of the site in the future.

The remedy also includes implemented interim remedial measures (IRMs) completed previously at the site. These IRMs included: excavation of a former tar well and associated NAPL and contaminated soil; excavation of cyanide contaminated soil; in-situ solidification of subsurface NAPL contaminated soil and installation of a slurry wall to form a barrier wall to prevent further NAPL migration; installation of a collection trench and associated NAPL collection wells and installation of a 2-foot thick, clean soil cover.

NYSDEC developed the selected remedy after reviewing the detailed investigation of the site and evaluating the remedial options in the “Feasibility Study submitted under New York’s Manufactured Gas Plant Program by RG&E.

Next Steps: NYSDEC will require RG&E to prepare a Remedial Design and if necessary, a Remedial Design Investigation and then implement the remedy.

NYSDEC will keep the public informed throughout the investigation and cleanup of the site.

Site Description: The RG&E East Station Former MGP site is located in the City of Rochester, Monroe County on the eastern bank of the Genesee River, at the foot of Suntru Street, north of the Inner Loop Highway. A coal carbonization plant was constructed at the Former MGP site in 1872 by Citizen’s Gas Works, and coal gas manufacturing at the Former MGP site ceased around 1952. A catalytic reforming process was used at the Former MGP site from around 1951 until 1976. Manufactured gas operations ceased at the Former MGP site in 1976. The former MGP had several gas holders and gas manufacturing plant buildings which have since been demolished and the foundations filled in. The site is currently unoccupied, except for a natural gas regulator station. The adjacent B&L Property and New York State-owned property are also unoccupied.

Additional site details, including environmental and health assessment summaries, are available on NYSDEC’s Environmental Site Remediation Database (by entering the site ID, 828204) at:

<https://www.dec.ny.gov/cfm/xtapps/dereexternal/index.cfm?pageid=3>

MGP Program Overview: New York’s MGP Program oversees the investigation and cleanup of former MGP sites. Sites where contamination has been released to the environment go through a process of investigation, evaluation, cleanup, and monitoring.

The gas manufacturing process involved the heating of coal and/or petroleum products to produce a gas mixture. Once cooled and purified, the gas was distributed through a local pipeline network. The gas was used for heating and cooking much like natural gas is used today. In the early years, the gas was also used for lighting in homes and in streetlights. A dense, oily liquid known as coal tar would condense out of the gas at various stages during its production, purification and distribution, and be discharged to the subsurface.

NYSDEC attempts to identify parties responsible for site contamination and require cleanup before committing State funds.

For more information about the MGPs, visit:
<https://www.dec.ny.gov/chemical/8430.html>

MANUFACTURED GAS PLANT PROGRAM

We encourage you to share this fact sheet with neighbors and tenants, and/or post this fact sheet in a prominent area of your building for others to see.

Stay Informed With DEC Delivers

Sign up to receive site updates by email:

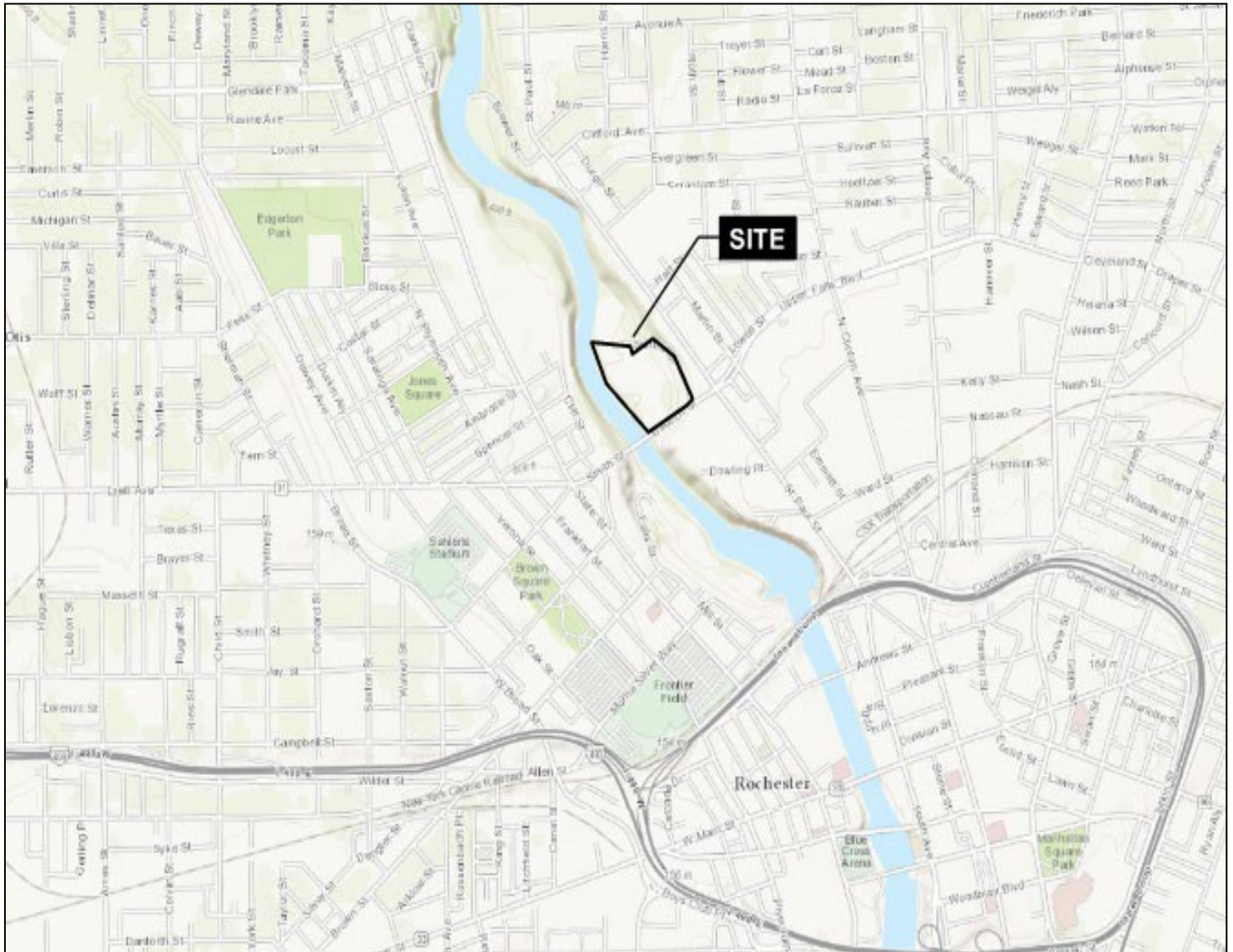
www.dec.ny.gov/chemical/61092.html

Note: Please disregard if you already have signed up and received this fact sheet electronically.

DECinfo Locator

Interactive map to access DEC documents and public data about the environmental quality of specific sites: <https://www.dec.ny.gov/pubs/109457.html>

Site Location Map



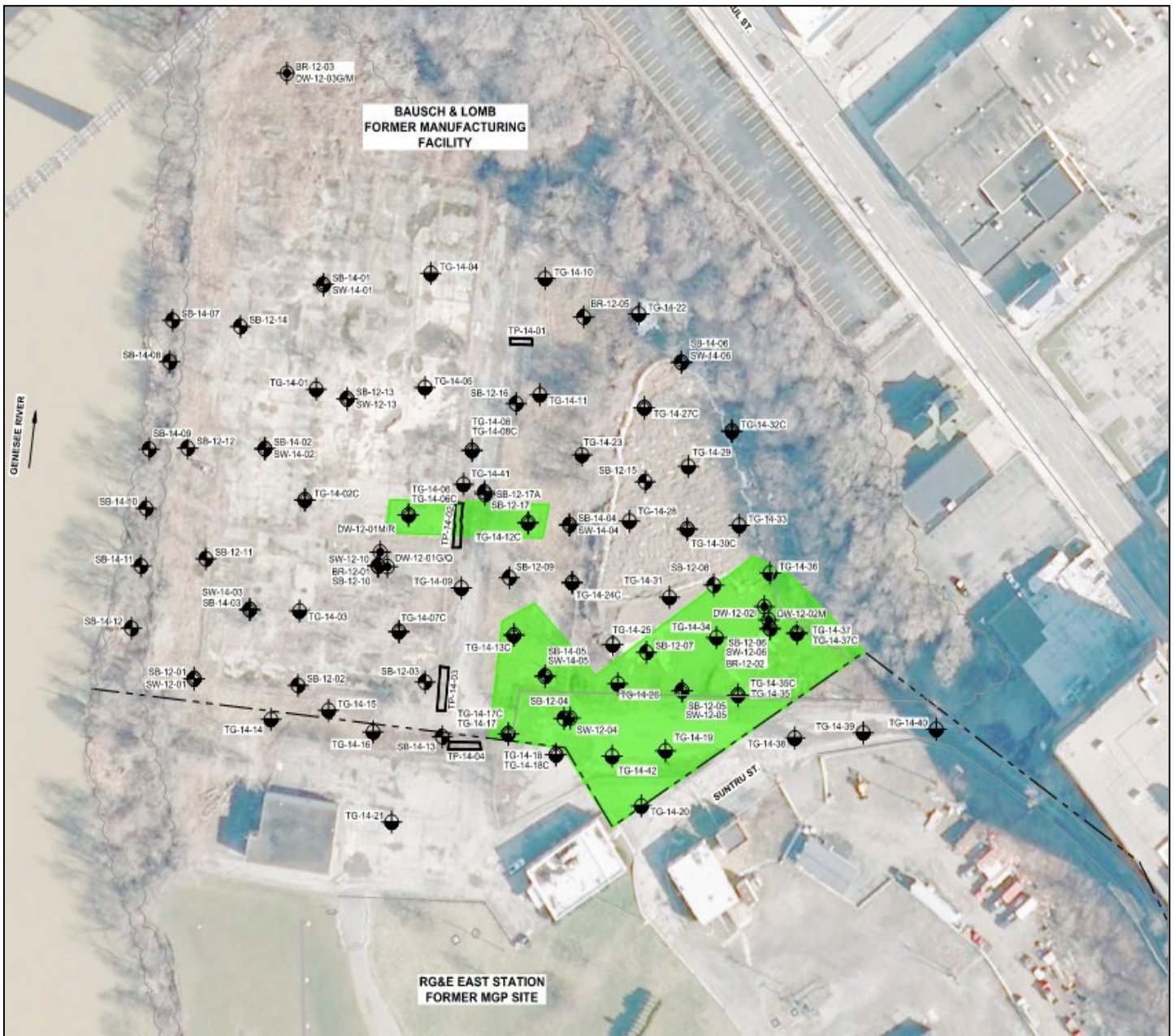
MANUFACTURED GAS PLANT PROGRAM

On-site Remedy



* Green shaded areas denote areas of proposed excavation of on-site soil

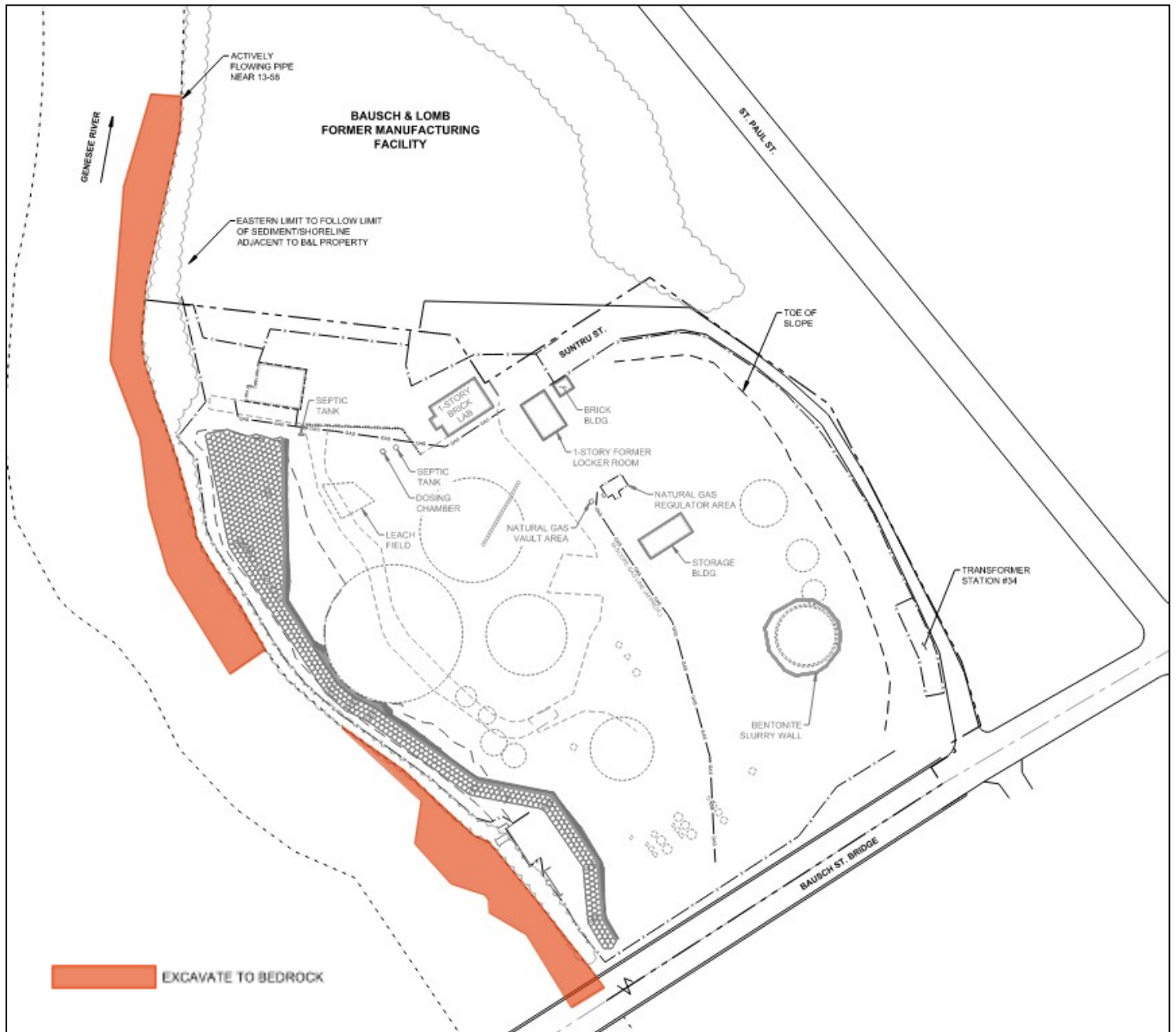
Off-site Remedy (Bausch & Lomb) Property



* Green shaded areas denote MGP wastes selected to be excavated on B&L property

MANUFACTURED GAS PLANT PROGRAM

Sediment Remedy





Translation Available. Don't see your language? Ask!

English	To have this document translated into a language you can understand, contact the person below. There is no charge for the translation.
Español Spanish	Si necesita la traducción de este documento a un idioma que pueda entender, comuníquese con la persona indicada abajo. La traducción es gratis.
简体字 Simplified Chinese	如需將此文件翻譯成您能理解的語言版本，請聯絡下方人員。本次翻譯不收取費用。
Русский Russian	Чтобы получить перевод этого документа на понятный вам язык, свяжитесь с представителем, данные которого указаны ниже. Плата за эту услугу не взимается.
אידיש Yiddish	צו האבן די דאקומענט איבערגעטייטשט אין א שפראך וואס איר קענט פארשטיין, פארבינדט זיך מיט די פערזאן אונטן. די איבערטייטשונג איז פריי פון אפצאל.
বাঙালি Bengali	এই নিখিট আপিন বুঝেত পারেন এমন একটি ভাষায় অনুবাদ করেত, িনিলিখতবষ্ির সাথে েযোগেযোগ করনা অনুবােদর জনষ্ েকান চাজর্ িদেত হেব না।
한국어 Korean	이 언어를 본인이 이해할 수 있는 언어로 받아보려면 아래 담당자에게 문의하십시오. 번역료는 없습니다.
Kreyòl Ayisyen Haitian Creole	Pou yo ka tradwi dokiman sa nan yon lang ou ka konprann, kontakte moun ki anba a. Ou p'ap peye anyen pou tradiksyon an.
Italiano Italian	Per ottenere la traduzione di questo documento in un'altra lingua, contatti la persona indicata qui di seguito. La traduzione è gratuita.
العربية Arabic	لترجمة هذا المستند إلى لغة يمكنك فهمها، تواصل مع الشخص أدناه. لا يتم تطبيق رسوم مقابل الترجمة.
Języki Polski Polish	Aby uzyskać tłumaczenie tego dokumentu na język, który jest dla Ciebie zrozumiały, skontaktuj się z poniższą osobą. Za tłumaczenie nie jest pobierana żadna opłata.

Contact: Salvatore F. Priore, (518) 402-9665, salvatore.priore@dec.ny.gov