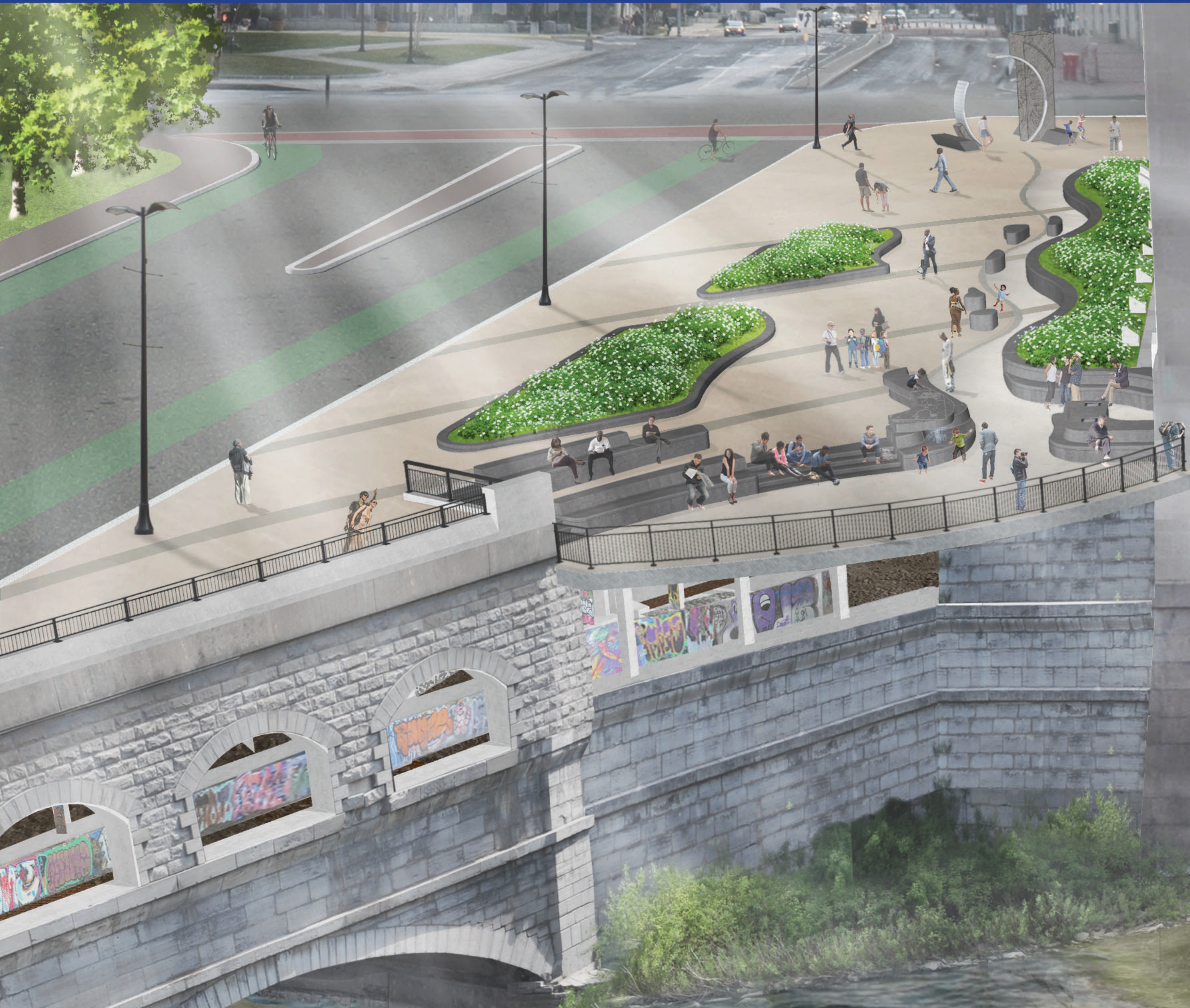




ROC THE RIVERWAY

BUILDING BRIDGES TO THE FUTURE



Rundel Library North Terrace



Empire State Development
DASNY



City of Rochester, NY
Malik D. Evans, Mayor
Rochester City Council

LaBella
Powered by partnership.

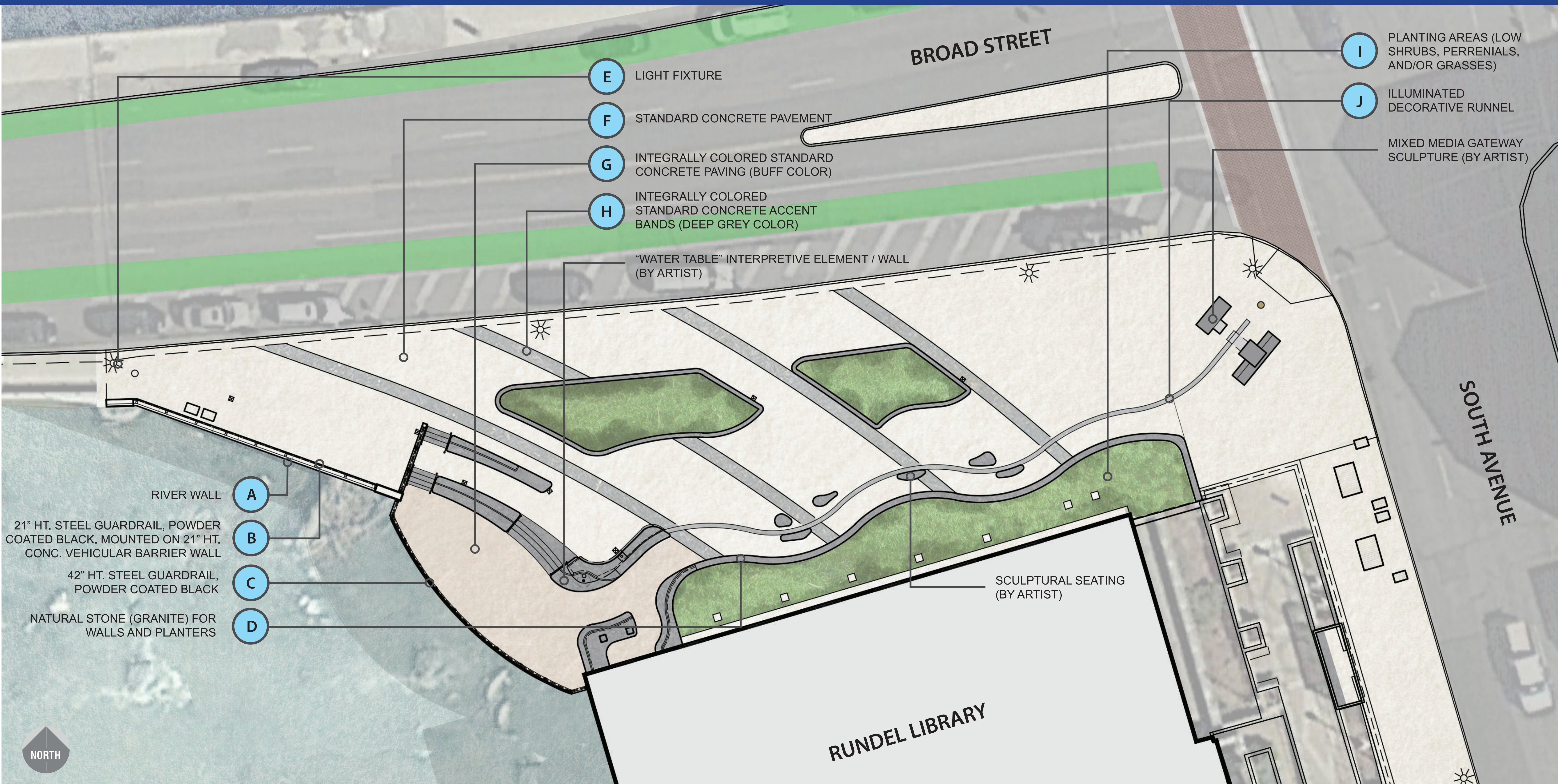


Bayer Landscape Architecture, PLLC



ROC THE RIVERWAY

BUILDING BRIDGES TO THE FUTURE



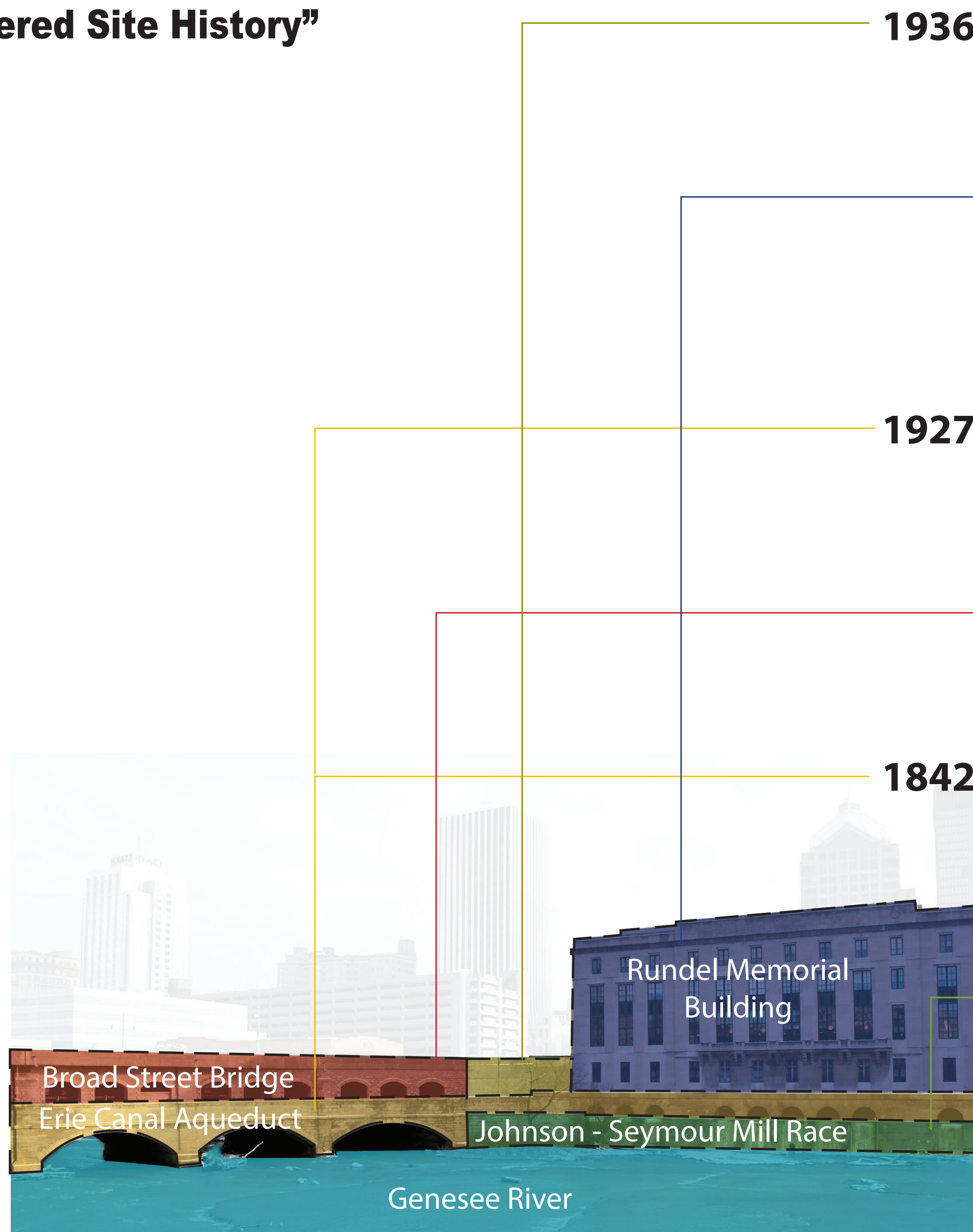


ROC THE RIVERWAY

BUILDING BRIDGES TO THE FUTURE



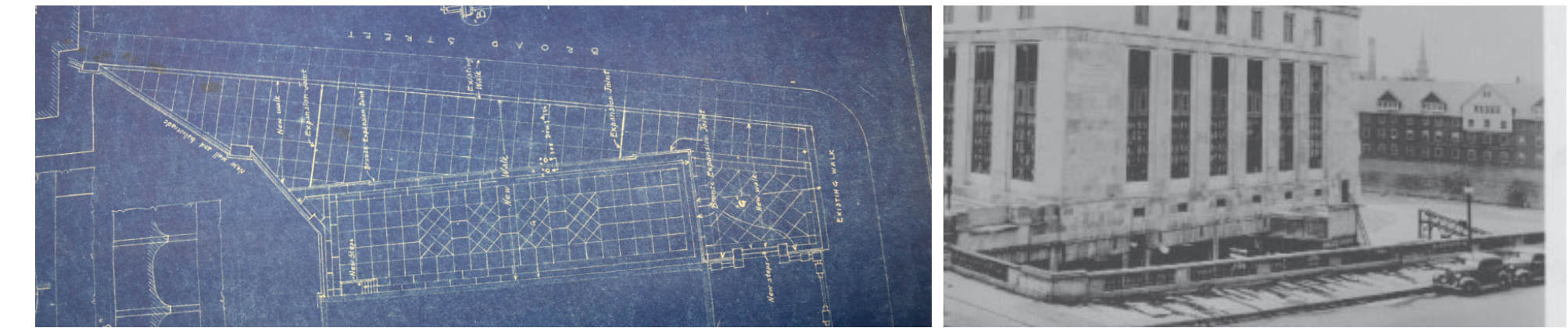
“Layered Site History”



1936-1937

North Terrace

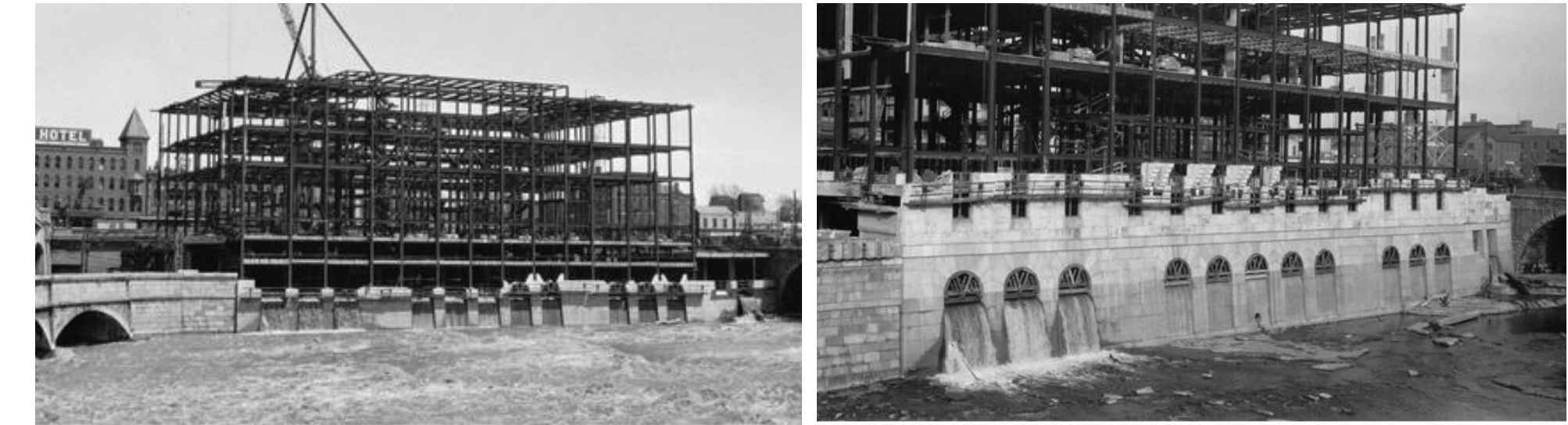
Newspaper articles note that the bids for the terrace construction were excessive and the project was rebid and constructed between 1936-37.



1935

Rundel Library

Designed and built during the Great Depression, the Rundel Memorial Building is constructed over the Johnson Seymour Mill Race, the old Erie Canal, and Rochester Subway bed. The mill race, which was incorporated into the design of the building, still flows under the building and a portion spills through a series of archways built into the West facade of the building.



1927-1956

Rochester Subway

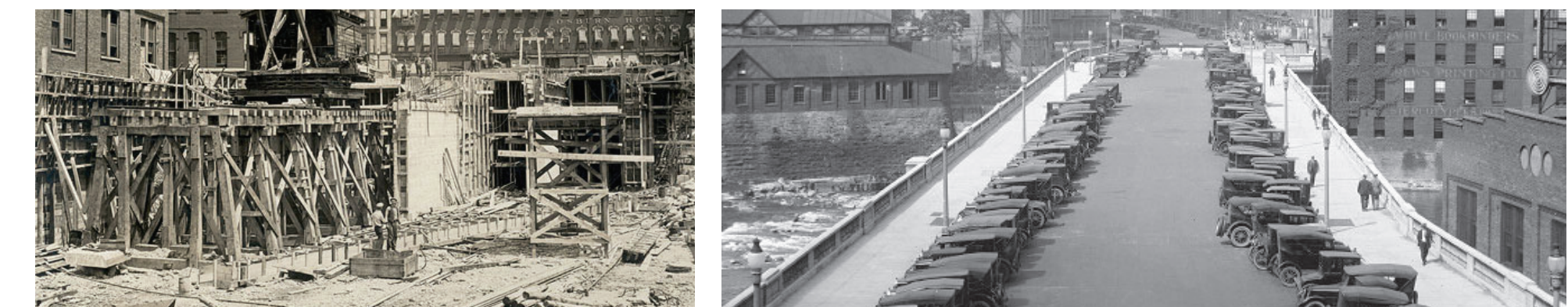
Built in the bed of the Erie Canal Aqueduct, construction began in 1921, and in 1927 the Subway was completed, carrying the first passengers under the City. The Rochester Subway ceased operations on June 30, 1956.



1925

Broad Street Bridge

Built on the foundation of the Erie Canal Aqueduct, the Broad Street Bridge provided an important link between the east and west during the rise of the automobile.



1842-1919

Erie Canal Aqueduct

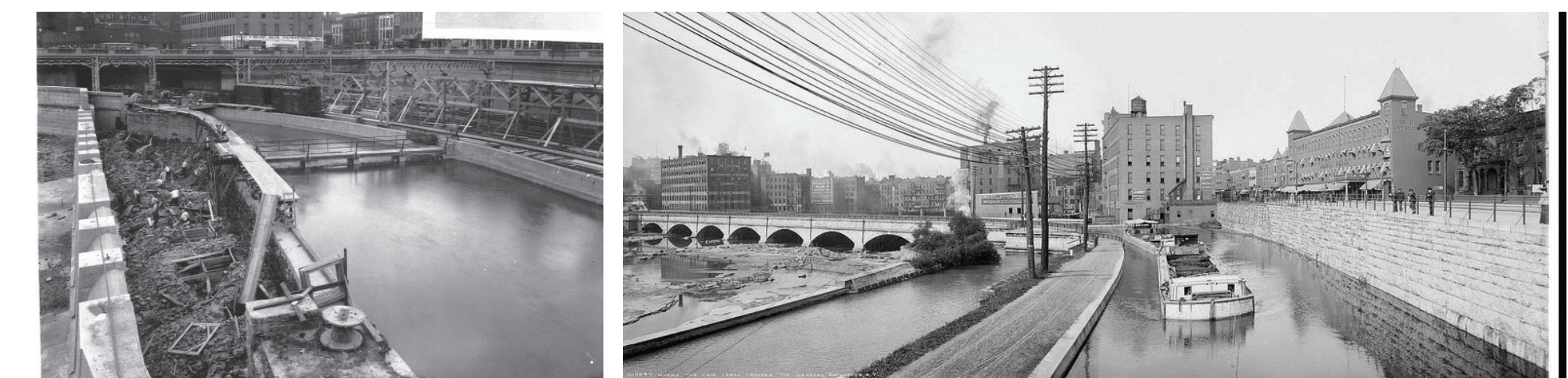
Replacing the original aqueduct (circa 1823), a second, wider aqueduct was constructed across the Genesee River to accommodate the increase in Canal traffic. Built entirely of Onondaga Limestone, the second aqueduct provides the foundation for the current Broad Street Bridge.



1817

Johnson - Seymour Mill Race

The race was cut along the East bank of the Genesee River by Elisha Johnson and Orson Seymour to operate mills on the site of the Rundel Library.



Genesee River

Flowing through the heart of the City, the River provided the power necessary for its growth.