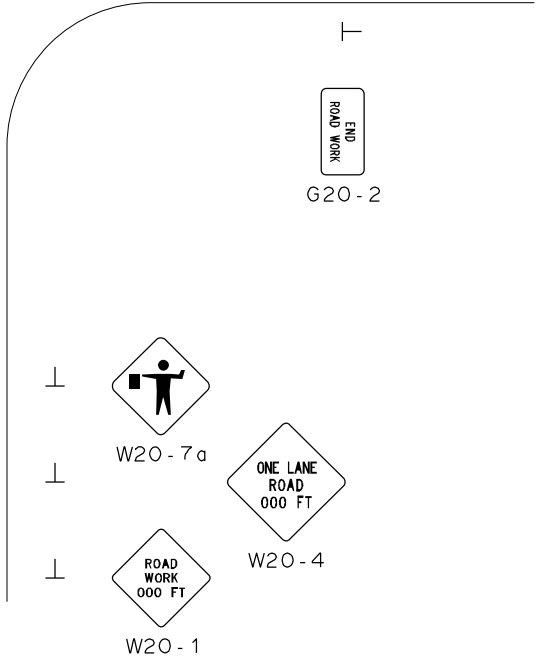
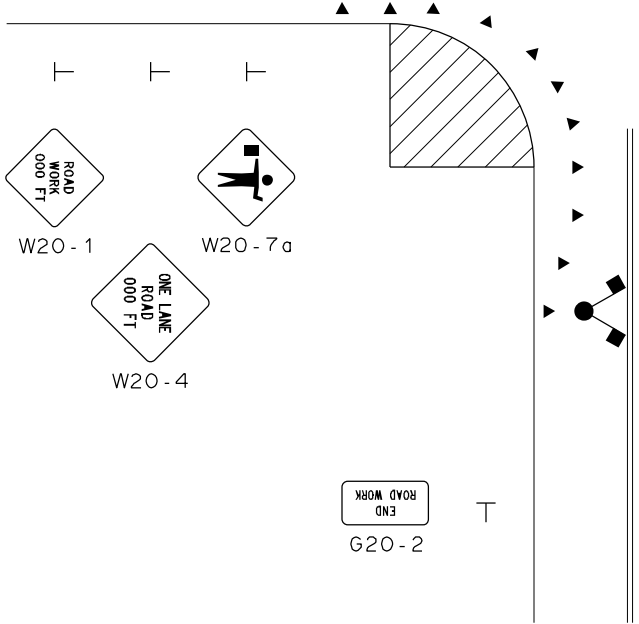
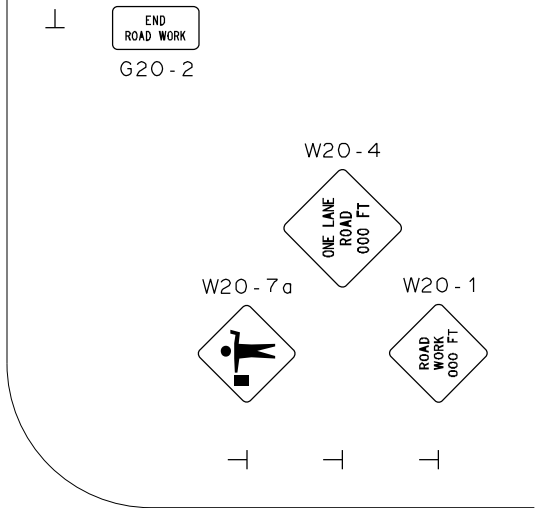
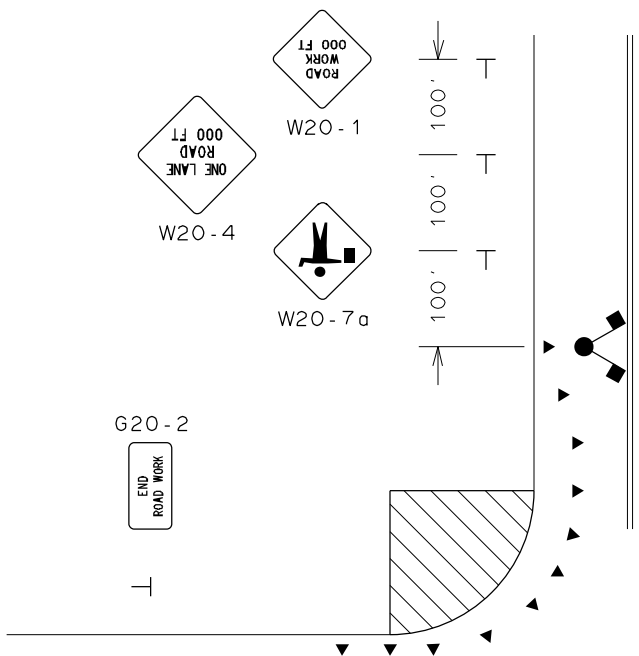


TWO LANE 2-WAY
ROADWAY
WITHOUT PARKING



NOTES:

1. TAPER LENGTH PER NATIONAL MUCTD TABLE 6C-4.
2. MAINTAIN 2-WAY TRAFFIC IN ONE LANE.
3. MAINTAIN MINIMUM 10 FEET WIDE DRIVING LANE.
4. FOR SHORT DURATION OPERATION, W20-1 SIGN CAN BE OMITTED.

CITY OF ROCHESTER		
MAINTENANCE AND PROTECTION OF TRAFFIC - MPT-1		
ISSUED	10-22-01	NON-STANDARD DWG.NO.S619-3
REVISED	1-1-17	