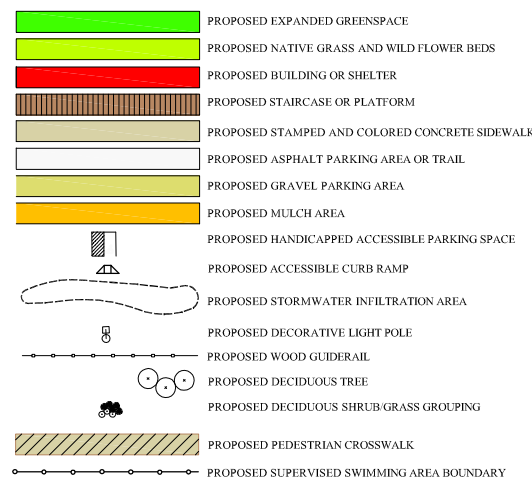


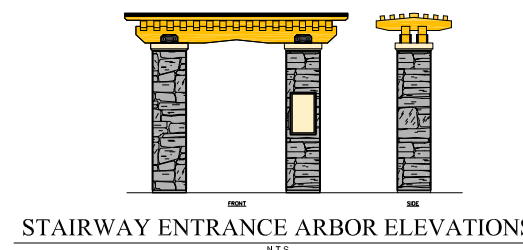
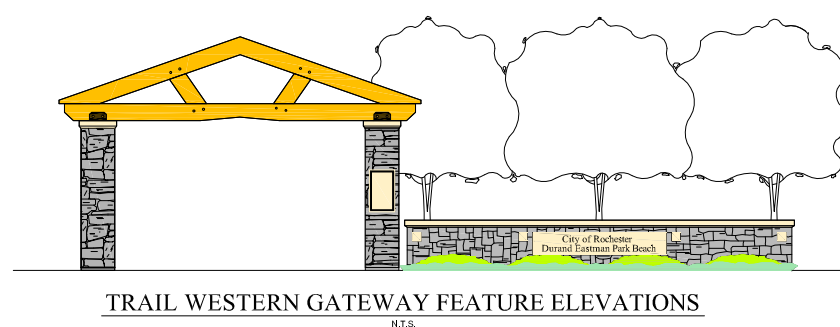
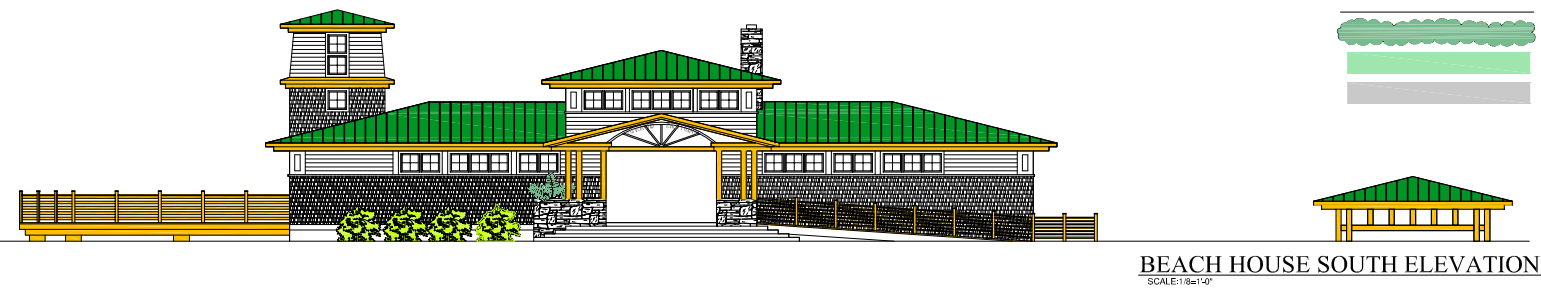
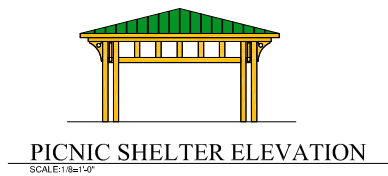
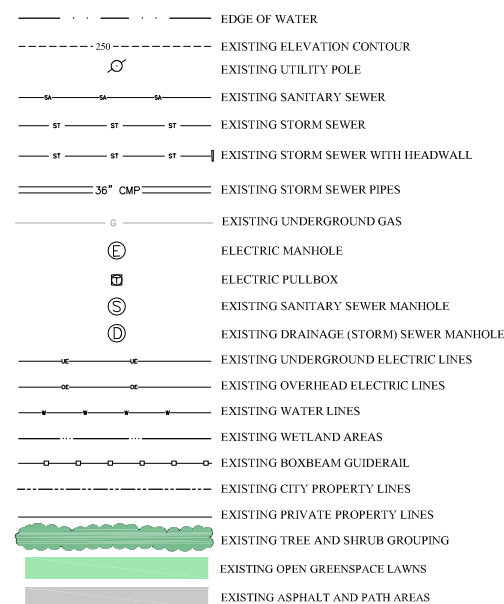
Conceptual Master Plan Site Alternative 1 Key Notes:

- ① **Parking Area "A"**
88 parking spaces provided with curbing, turn-arounds and gravel surface at westside for summer use only, asphalt pavement at eastside for all season use
one curb cut driveway provided
added greenspace/overflow parking with mountable curbed driveway opening to west and east ends with landscaping and picnic shelters
low native shrubs, grasses, perennials and wildflower beds in island along Lakeshore Blvd. to screen parked cars
remove all wood post bollards
- ② **Beach House Area**
beachhouse sited at high area of western beachfront north of Van Lare Plant
existing greenspace buffer preserved on both west and east sides
30' wide, one way asphalt driveway for emergency access, drop-offs, handicapped parking and flagpoles
2A: re-aligned county trail south of beachhouse
2B: playground and picnic shelter on east side
2C: bicycle parking on west side
2D: bus stop and shelter
2E: 160' by 340' supervised swimming area
2F: existing open greenspace and trail location to remain
2G: 40 space asphalt parking area to serve playground and existing greenspace areas
2H: fully enclosed and screened dumpster storage pad
- ③ **Parking Area "B"**
reduced to 46 gravel parking spaces
added greenspace/overflow parking to the west
provide one curb cut driveway at the east end
provide pedestrian crosswalk with signs to Kings Highway and Sunset Point Road
provide ramp/path down to beach for windsurfers and cartop boats
provide stairs with lookout platform to beach from west end of parking area
remove all wood post bollards
- Parking Area "C"**
maintain 40 existing gravel parking spaces
provide stairway to beach
- Parking Area "D"**
maintain 40 existing gravel parking spaces
provide stairway to beach
- ④ **Existing Sherry Swamp Tributary Outfall**
install channel stone rip-rap and removable bridge crossing
- ⑤ **Existing Camp Eastman Tributary Outfall**
install channel stone rip-rap and removable bridge crossing
- ⑥ **Lakeshore Boulevard (By Others)**
provide narrower northern shoulder to add width to greenspace island
provide granite curbing from Camp Eastman to Parking Area "C"
add drainage inlets along northern curb edge
upgrade street lighting on south side of road
- ⑦ **County Trail**
provide stairways to beach areas
provide wood guiderail along top of bank
provide pedestrian crosswalk to Camp Eastman Entrance Road
provide gateway feature at west and east ends
- ⑧ **Open Greenspace**
remove all existing wood post bollards and wood guiderailing
provide covered picnic shelters
provide picnic tables and grills
add deciduous shade tree groupings in less prominent viewshed areas
provide stairway/ramp/boardwalk across sand to beach area
provide mountable curb cut with gate for overflow parking access
- ⑨ **Sherry Swamp Water Quality Improvement**
implement Alternative 4A- Partial Diversion of outflow with Smart Sponge treatment
install new flow control vault, 2 new manholes, new outfall structure, 670 feet of 57" x 38" CMP diversion pipe, and dig new deeper outlet channel to the lake
install channel stone rip-rap and removable bridge crossing
- ⑩ **Camp Eastman Tributary Water Quality Improvement**
implement CEWQ Alternative 2-- Smart Sponge treatment facility south of old railroad embankment
install channel stone rip-rap and removable bridge crossing

CONCEPTUAL ALTERNATIVE SITE PLAN LEGEND:



EXISTING CONDITIONS LEGEND:



DURAND EASTMAN PARK BEACH MASTER PLAN

LOCATION MAP
N.T.S.

DATE	REVISIONS	BY

DRAWING ALTERATION
WARNING: It is a violation of the New York State Education Law, Article 145, Section 2009, Special Provision 2, for any person unless he is acting under the direction of a Licensed Professional Engineer or Land Surveyor to alter or amend in any way, or to permit the alteration or amendment of any drawing or plan prepared by him or under his supervision. The altering, amending or changing of any drawing or plan shall constitute a violation of the law unless it is done in accordance with the provisions of the law. This drawing is altered by the signature and date of such alteration, and a specific description of the alteration.

BY: _____
DATE: _____

LU ENGINEERS
Civil and Environmental

JOSEPH C. LU ENGINEERING AND
LAND SURVEYING, P.C.
2230 PENFIELD ROAD
PENFIELD, NY 14526
(585) 377-1450
FAX: (585) 377-1266

PROJECT:
**DURAND EASTMAN
PARK BEACH
MASTER PLAN**

CLIENT:

CITY OF ROCHESTER

DRAWING TITLE:
**CONCEPTUAL
MASTER PLAN**

DESIGNED BY: JH SCALE: 1"=100'
DRAWN BY: AEM DATE: AUGUST 2007
CHECKED BY: JH PROJECT No. 4219

SHEET
1 of 1 DRAWING No.
FMP-1

