



City of Rochester, NY  
Malik D. Evans, Mayor  
Rochester City Council



ADAM J. BELLO  
MONROE COUNTY EXECUTIVE



NEW YORK  
STATE OF  
OPPORTUNITY.

Department of  
Transportation

# GENESEE STREET RECONSTRUCTION PROJECT

## SCOTTSVILLE RD / ELMWOOD AVE TO BROOKS AVE / S PLYMOUTH AVE

Public Information Meeting #2 (Hybrid Format)

July 19, 2023

This project is federally-funded  
and administered by NYSDOT



U.S. Department of Transportation  
Federal Highway  
Administration




Stantec

# Format of Zoom Webinar



(With Items to note for In-Person Meeting)

- **Attendance:** Please use the “chat”  feature to provide your name and address.
- **Questions:** Meeting participants will be muted during the presentation. Questions will be addressed at the end of the presentation.
- **Attendance:** Attendees consent to the audio and video recording of this meeting for project documentation purposes.

# Project Team

## City of Rochester

- Mayor Malik D. Evans
- DES Commissioner Richard Perrin, AICP
- City Engineer Holly E. Barrett, PE
- City Street Design Manger Dominic Fekete, PE
- City Project Manager Donna L. Clements, PE – ZOOM HOST
- City Principal Transportation Specialist David Riley
- City Forestry James Hart

## Municipal Liaisons

- NYSDOT Regional Local Project Liaison Karlee Danek, PE
- MCDOT Project Liaison David M. Kubiak, PE

## Design Consultants

- Stantec Project Manager Sean Miller, PE – Zoom Co-Host
- Subconsultants (EDR, GdB Geospatial, Lu Engineers)



# Agenda

## Presentation

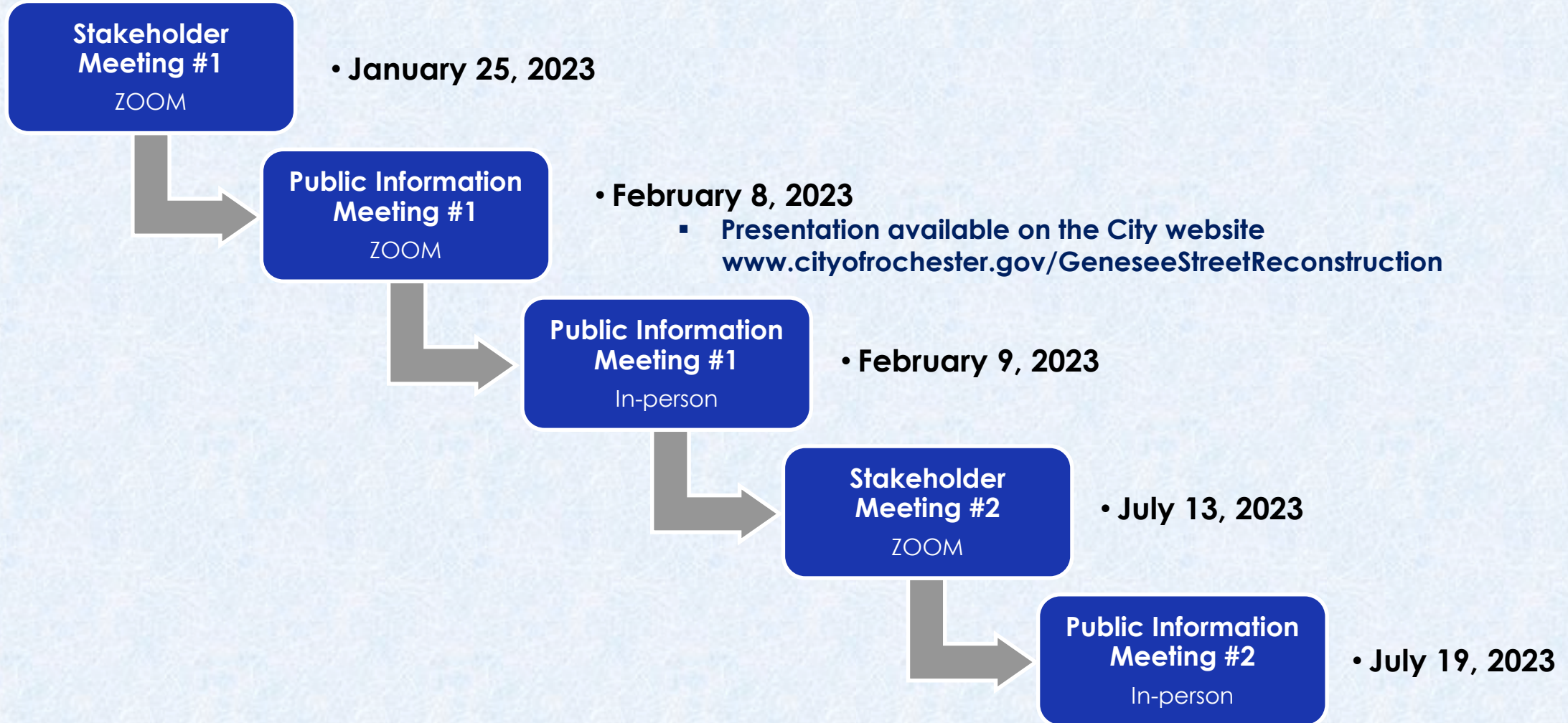
- ❖ Project Overview
- ❖ Final Design
  - Bike Accommodations
  - Congress Ave Improvements
  - Streetscape Concepts
- ❖ Work Zone Traffic Control
- ❖ Project Timeline
- ❖ Contact Information

## Questions & Answers

## Additional Information



# Meetings held to date



# Project Objectives



- ✓ Correct identified pavement deficiencies
- ✓ Address geometric deficiencies
- ✓ Correct safety deficiencies
- ✓ Implement the City's "Complete Streets" policy to accommodate all users (vehicles, pedestrians, and bicyclists)
- ✓ Provide a safer pedestrian crossing at Congress Ave
- ✓ Encourage multi-modal transportation

# Project Area



# Preliminary Design

What did we take into account?

- Conditions within the corridor
  - ✓ Pavement, sidewalks, lighting, trees, etc.
- Analysis & studies
  - ✓ Accident/Safety, traffic data, parking, environmental, architectural, geotechnical
- Congress Ave Priority Investigation Location (P.I.L.) Study
- Alignment with City's vision and goals
- Public input





# Preliminary Design

## Existing Roadway Section

- Narrow travel lanes (10' wide)
- Higher than average # of accidents
- Under utilized parking
- No accommodations for bicycles



# Challenges/Constraints & Multiple Needs

- Narrow travel lanes with on-street parking contribute to accidents
- Congress Ave intersection
- Balancing Level of Service of vehicles w/ multimodal (transit, peds, bikes)
- Balancing parking needs
- Impacts to residential lawns due to widening (stairs, retaining walls, existing steep slopes)
- Impacts to existing underground utilities
- Impacts to existing trees
- Cost



# City of Rochester Complete Streets

- Balance the needs and interests of all users of all ages and abilities
- Accommodate all modes of travel that is consistent with neighborhood context and neighborhood goals
- Provide safe access for all users
- Integrate physical activity into our daily lives through an increased emphasis on walking, bicycling and public transportation

<https://www.cityofrochester.gov/CompleteStreets/>



# Preliminary Design

What did we do with all of that information?



- Found that the project is comprised of 3 distinct segments
  1. (South) Scottsville Rd / Elmwood Ave – Arvine Heights
  2. (Middle) Arvine Heights to Grandview Terrace / Congress Ave
  3. (North) Grandview Terrace / Congress Ave to Brooks Ave / S Plymouth Ave



- Developed & reviewed 6 different alternatives
- Presented 2 Feasible Alternatives at Public Information Meeting #1
- **Listened**
- Incorporated public input into the Proposed Alternative

# Proposed Alternative

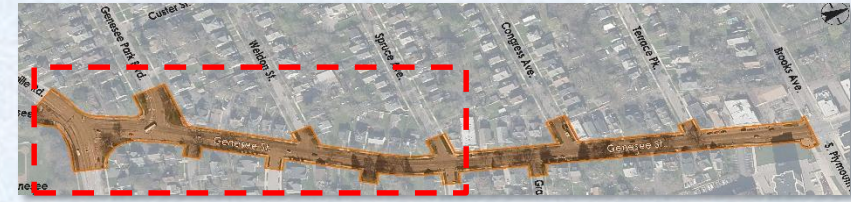


- ❖ Reallocate pavement width
- ❖ Reduces # of pedestrian crossings
- ❖ Provide 10' wide shared use path (east side)
- ❖ Constrained by ROW & multi-modal demand

- ❖ Remove Under-utilized Parking Lane
- ❖ Provide 2-way Cycle Track along East side
- ❖ Provide additional PED Crossing @ Spruce / Arvine Park

- ❖ Reallocate pavement width
- ❖ Shorten pedestrian crossing
- ❖ Provide 10' wide shared use path (east side)
- ❖ Constrained by ROW & multi-modal demand

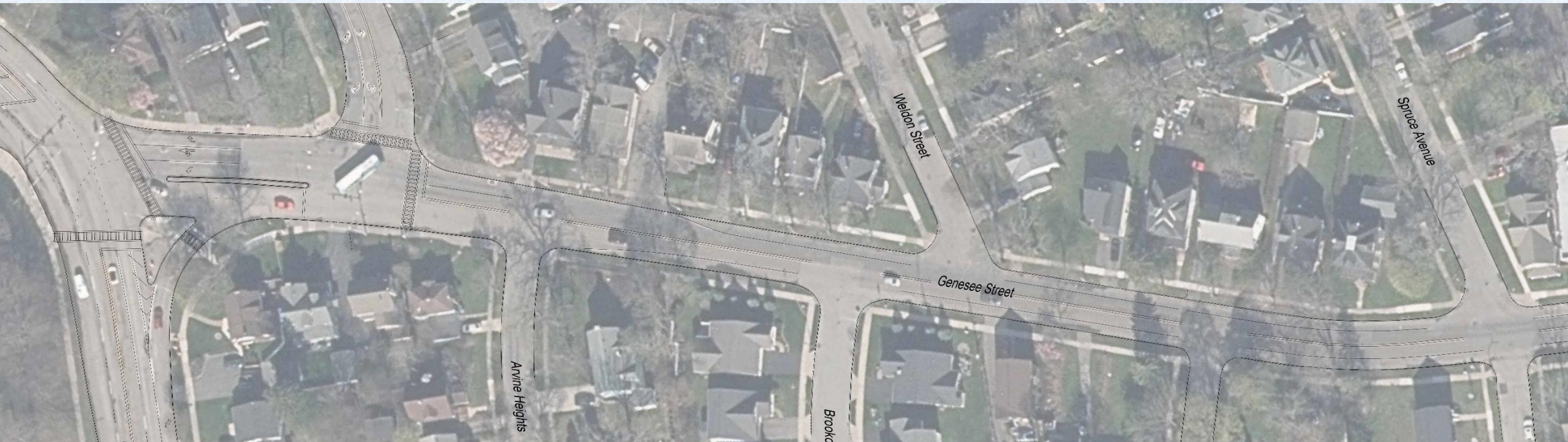
# Final Design



## Existing Section Elmwood to Spruce

### Existing features

- Narrow travel lanes (10' wide)
- Long pedestrian crossing lengths
- Hazardous pedestrian crossing at slip ramp
- Under-utilized parking
- Excessive amount of pavement
- No accommodations for bicycles



# Final Design

## Proposed Section Elmwood to Spruce

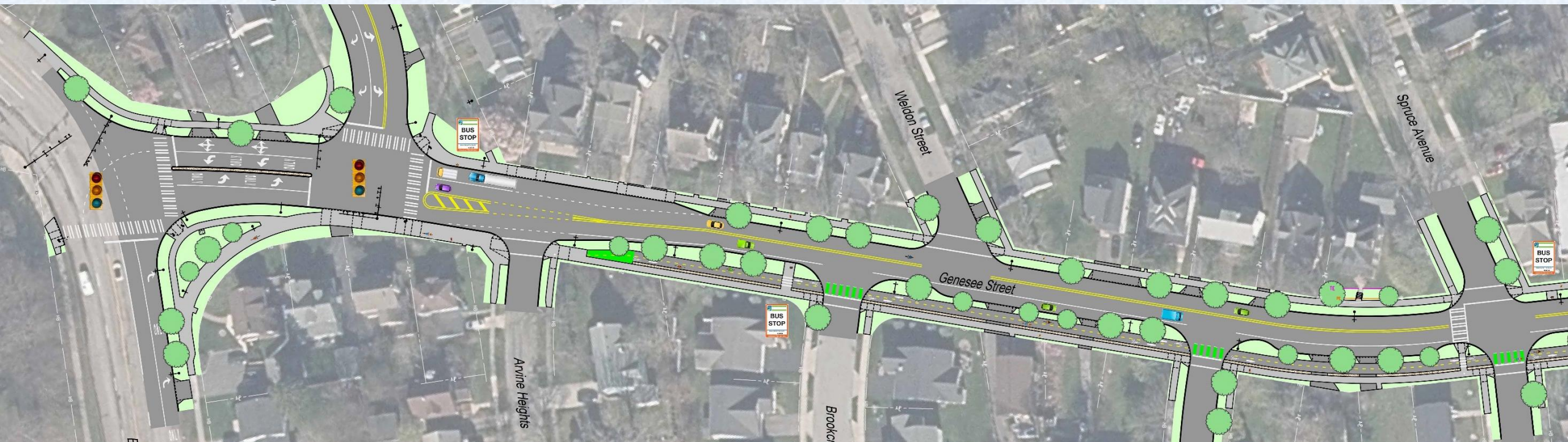


### Proposed features

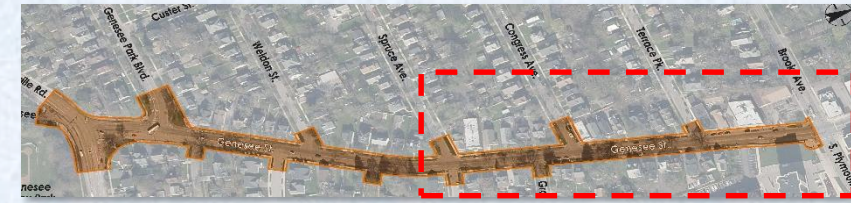
- Standard travel lanes (11' wide)
- Bicycle accommodated via 10' wide shared use path or 8' wide 2-way cycle track along east side

### Design Elements

- Removed slip ramp at Elmwood Ave
- Shortened pedestrian crossing lengths
- Customized parking to meet demand



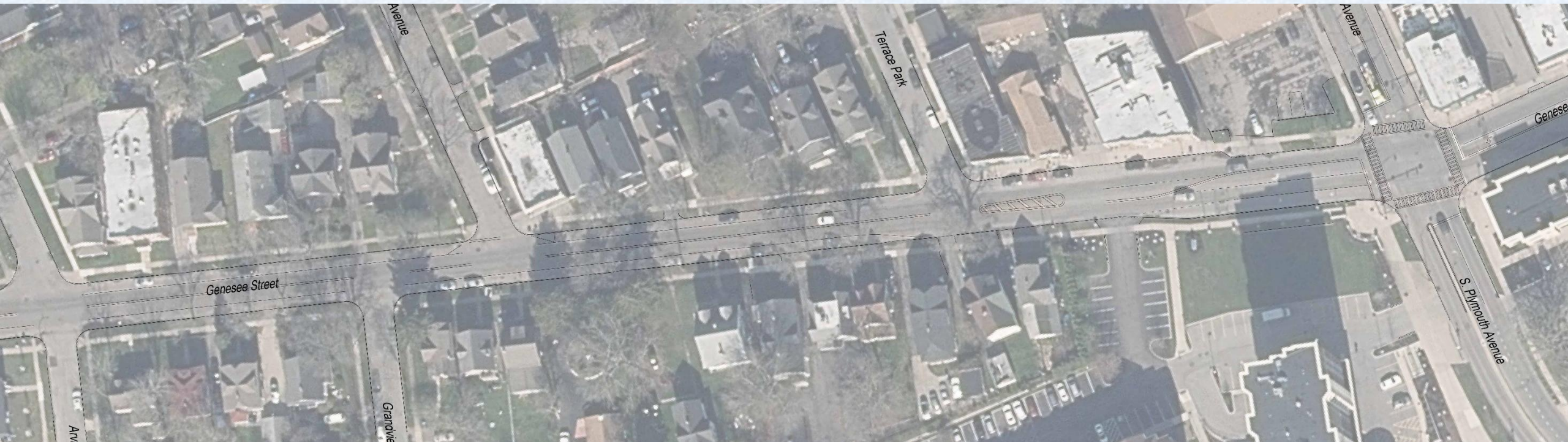
# Final Design



## Existing Section Spruce to Brooks

### Existing features

- Narrow travel lanes (10' wide)
- Under utilized parking
- No accommodations for bicycles
- Excessive amount of pavement
- Long pedestrian crossing lengths
- Congress Ave Priority Investigation Location (PIL)





# Final Design

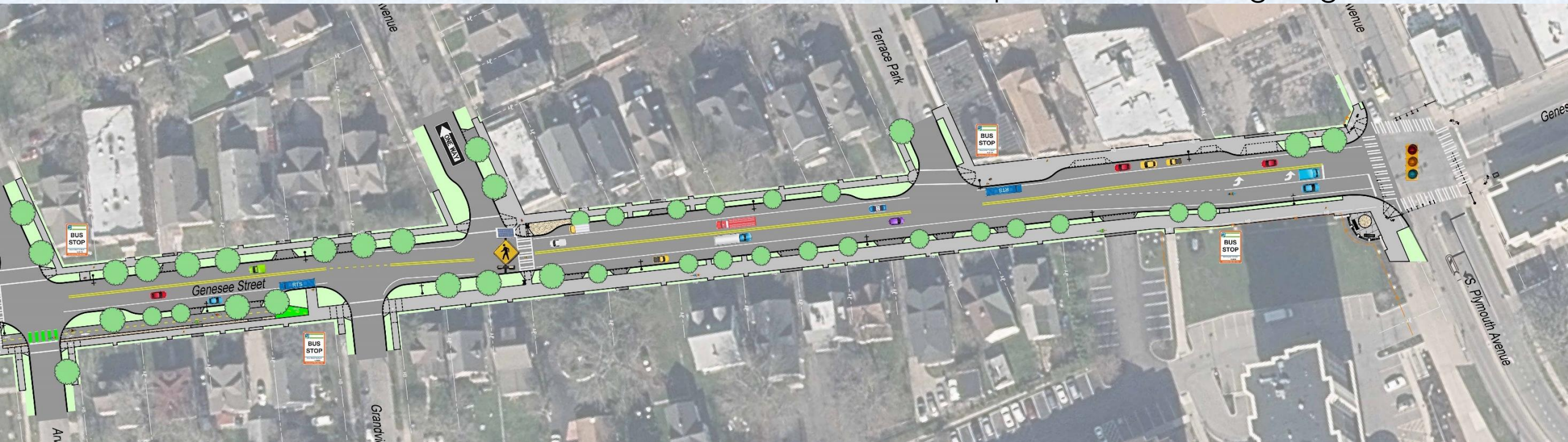
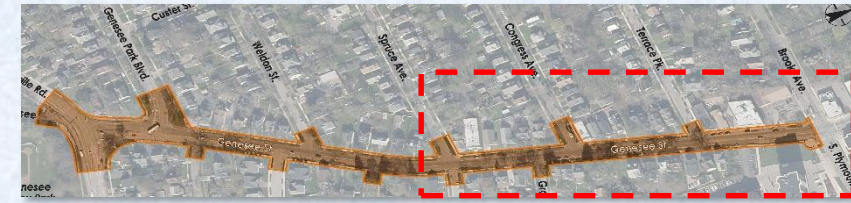
## Proposed Section Spruce to Brooks

### Proposed features

- Standard travel lanes (11' wide)
- Bicycle accommodated via 10' wide shared use path or 8' wide 2-way cycle track along east side

### Design Elements

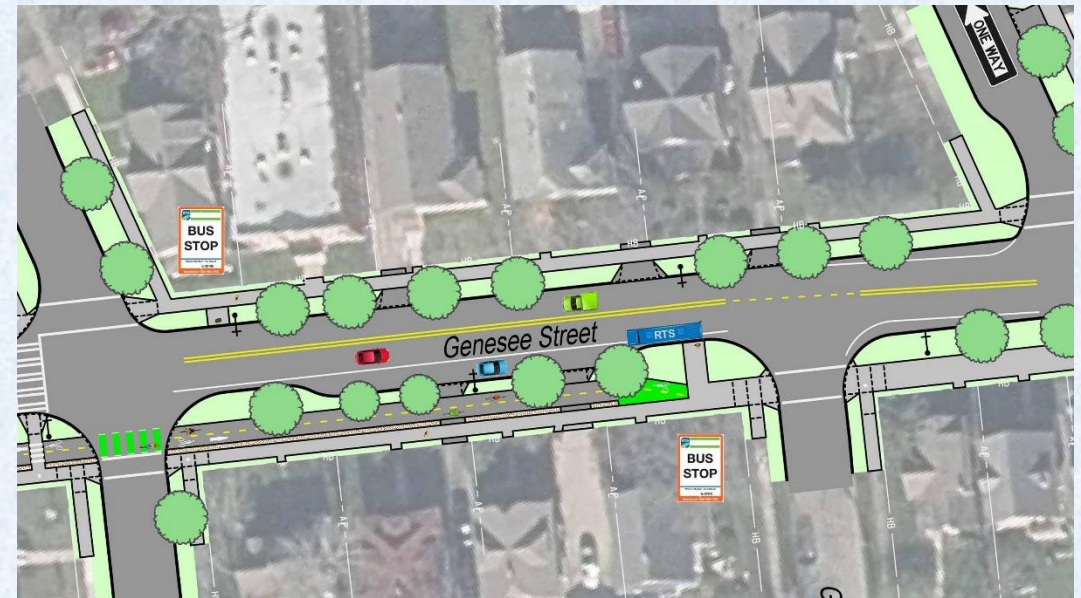
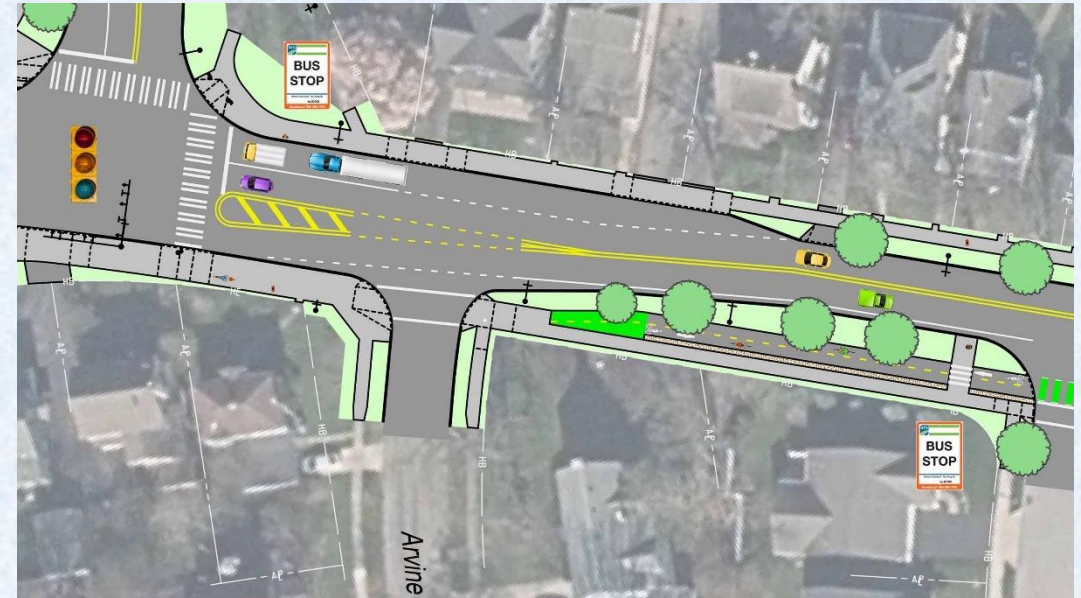
- New Mid-Block Crossing at Congress, Congress converted to One-Way to Custer Street
- Customized parking to meet demand
- Shortened pedestrian crossing lengths



# Final Design

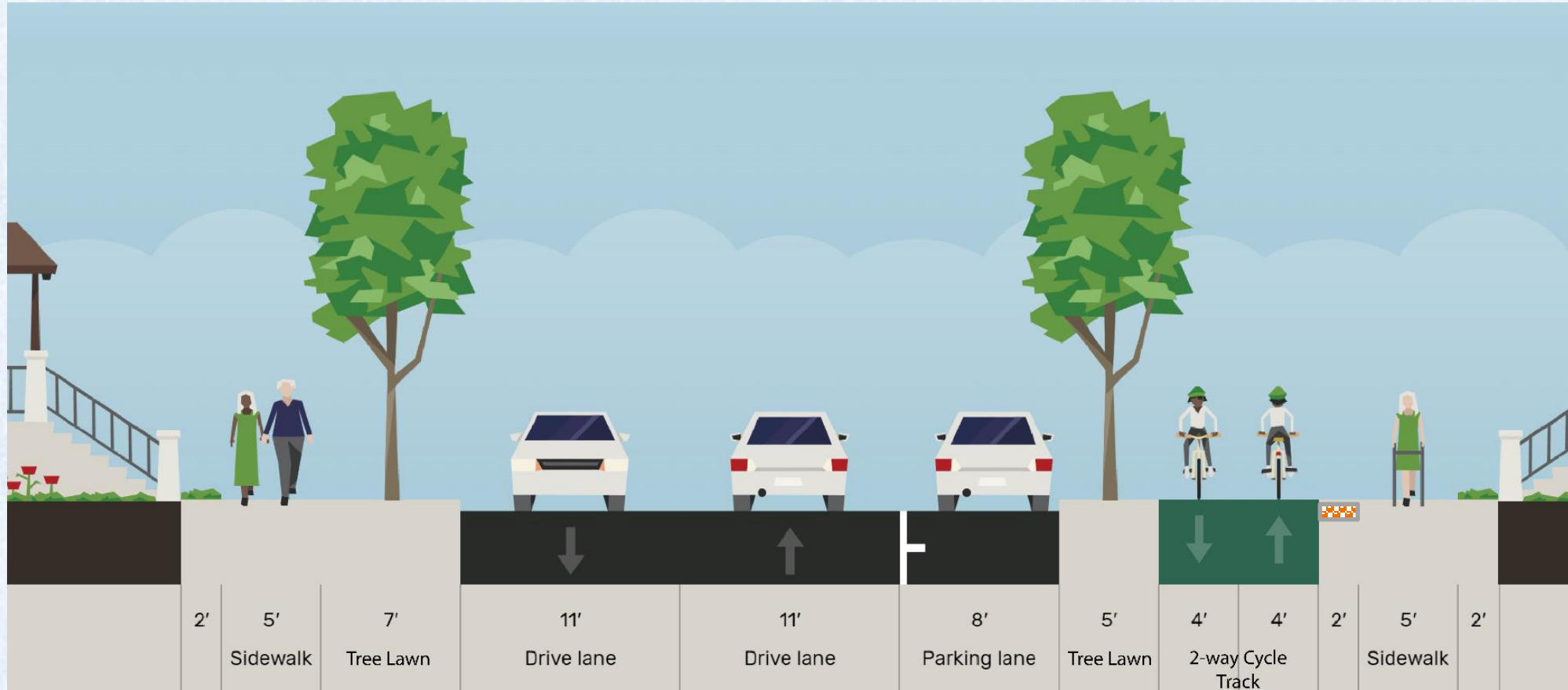
Continuous bicycle accommodations along east side of corridor

- 10' wide Shared Use Path (Elmwood to Arvine Heights)
- 8' wide 2-way Cycle track (Arvine Heights to Grandview Terrace)
- 10' wide Shared Use Path (Grandview Terrace to Plymouth Ave)



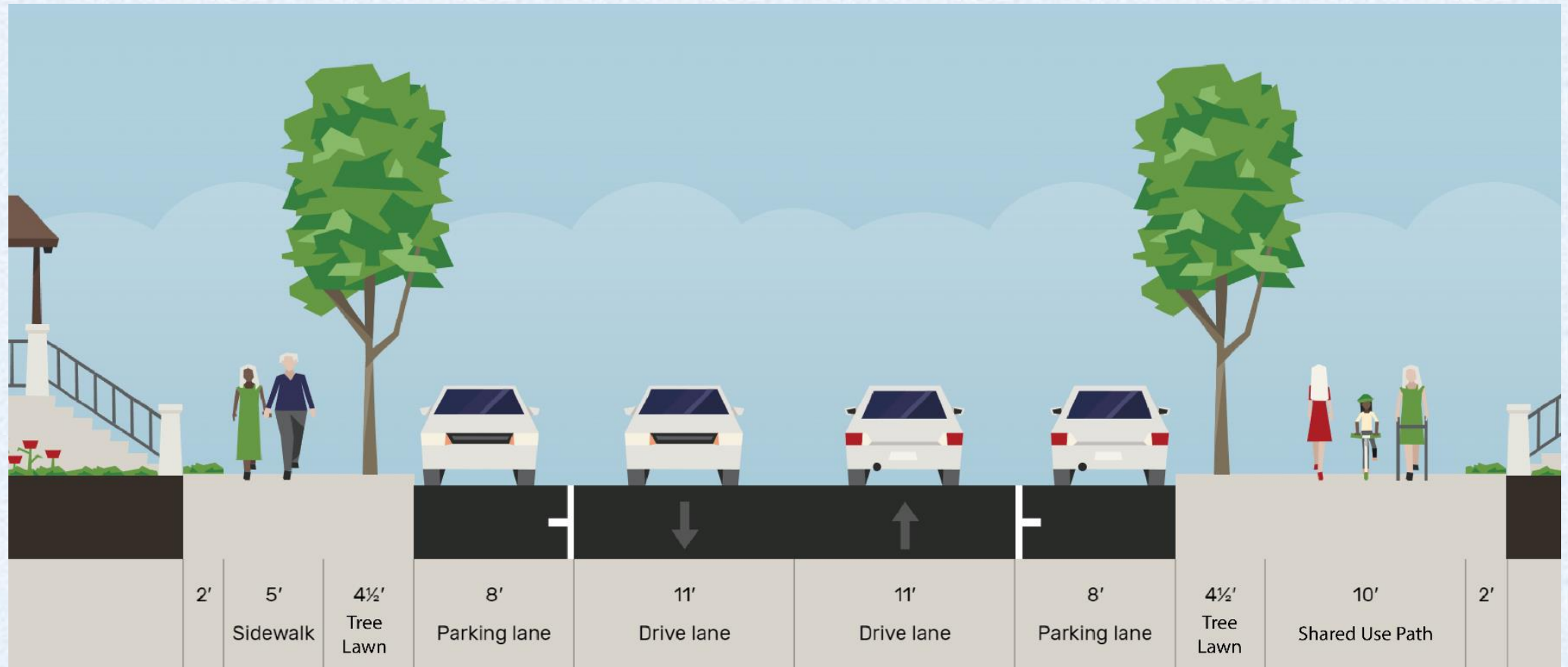
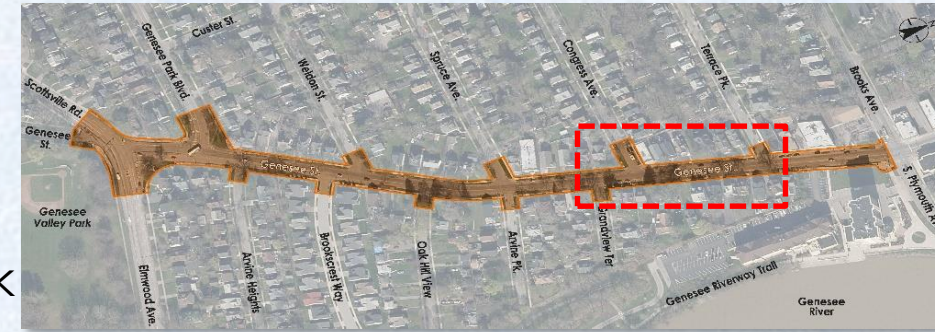
# Final Design

Proposed Roadway Section Arvine Heights to Grandview Terrace



# Final Design

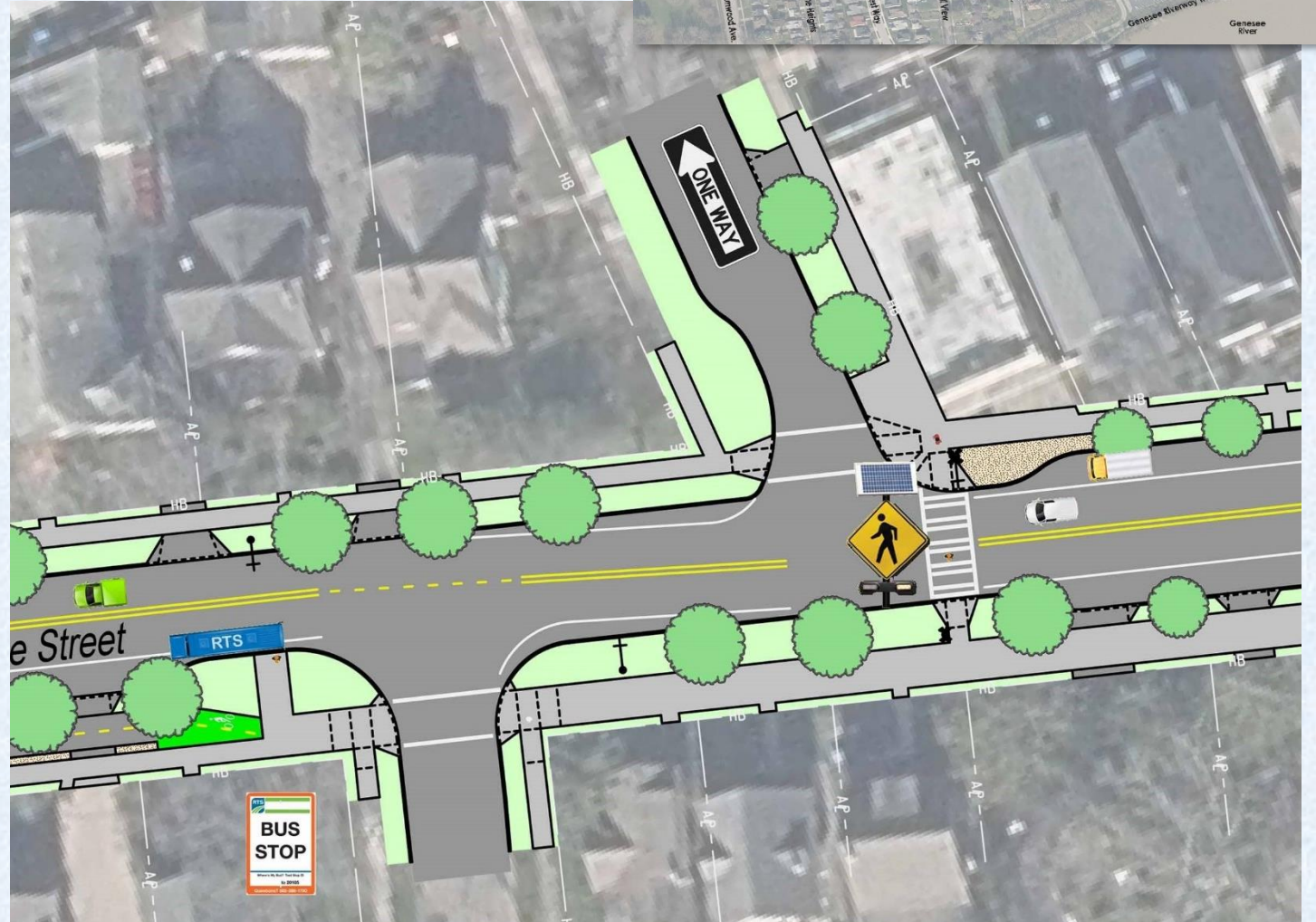
Proposed Roadway Section Grandview Terrace to Terrace Park



# Final Design

## Congress Avenue Improvements:

- Curb Bump-outs
- Marked Crosswalk
- Rapid Rectangular Flashing Beacon
- Bicycles on Shared Use Path
- Congress Ave One-Way west conversion to be made permanent from Genesee St to Custer St



# Final Design - Street Trees

## Mayor Evans initiative to plant 70,000 trees by 2026

- 52 existing street trees within the work limits (20 trees to be retained, 32 trees to be removed)
- 76 new street trees will be planted
- Total # of trees with work limits **increased** from 52 to 96 street trees
- 6 Species of Trees will be planted within the work limits (Hedge Maple, English Oak, Hackberry, Hawthorn, Riverbirch, Sargent Cherry)
- This project allows the opportunity to re-establish a street tree landscape with trees that are more suitable for use within a tree lawn and tend to be less susceptible to damaging the adjacent sidewalk and street



Hedge Maple  
(*Acer Campestre*)



Sargent Cherry 'Columnaris'  
(*Prunus Sargentii 'Columnaris'*)



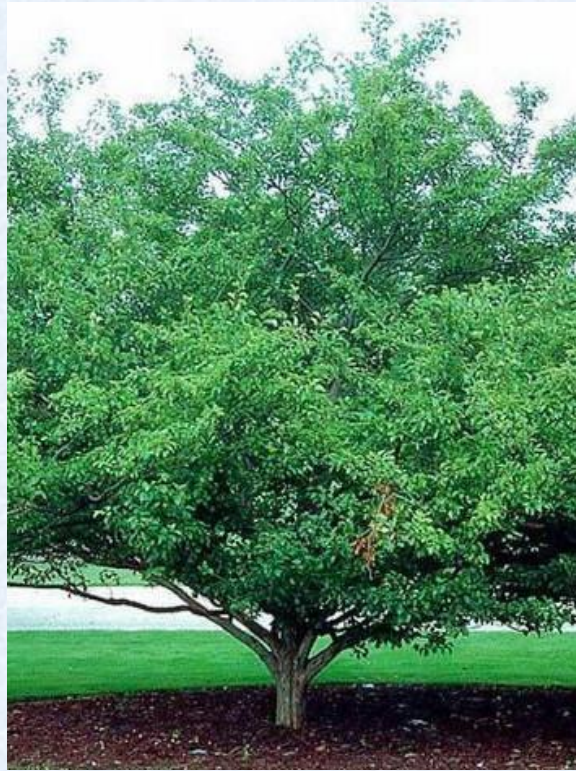
Hackberry 'Magnifica'  
(*Celtis Occidentalis 'Magnifica'*)

# Final Design

## Plant Materials and Street Lights



**English Oak**  
(*Quercus Robur*)



**Hawthorn 'Winter King'**  
(*Crataegus Viridis 'Winter King'*)



**Riverbirch 'Heritage'**  
(*Betula Nigra 'Heritage'*)

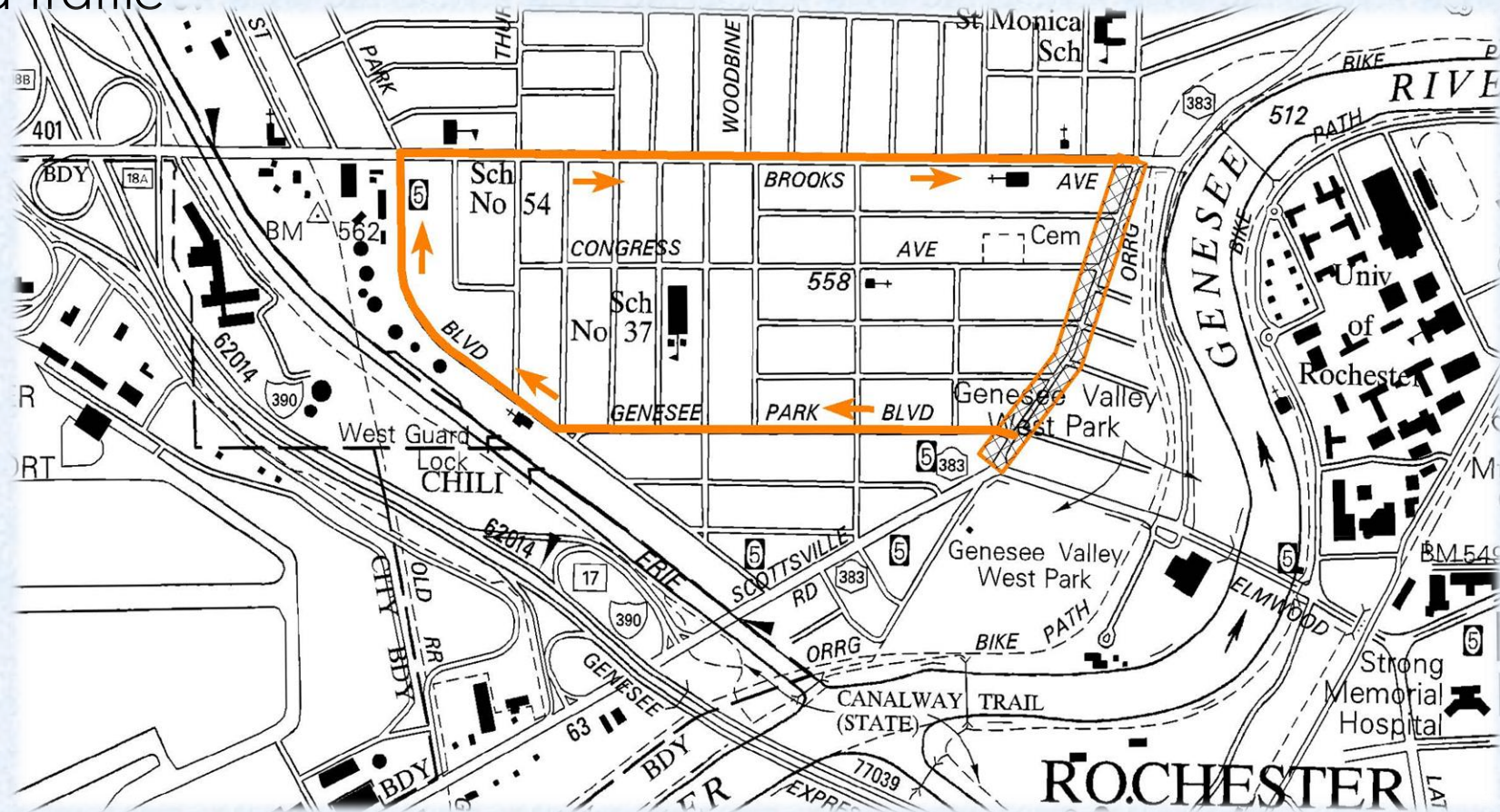


**Cyclone Domia Street Light**  
*Similar to what is installed on  
Mount Hope Avenue &  
State Street*

# Work Zone Traffic Control - Detour

## One-Way Detour Northbound Traffic

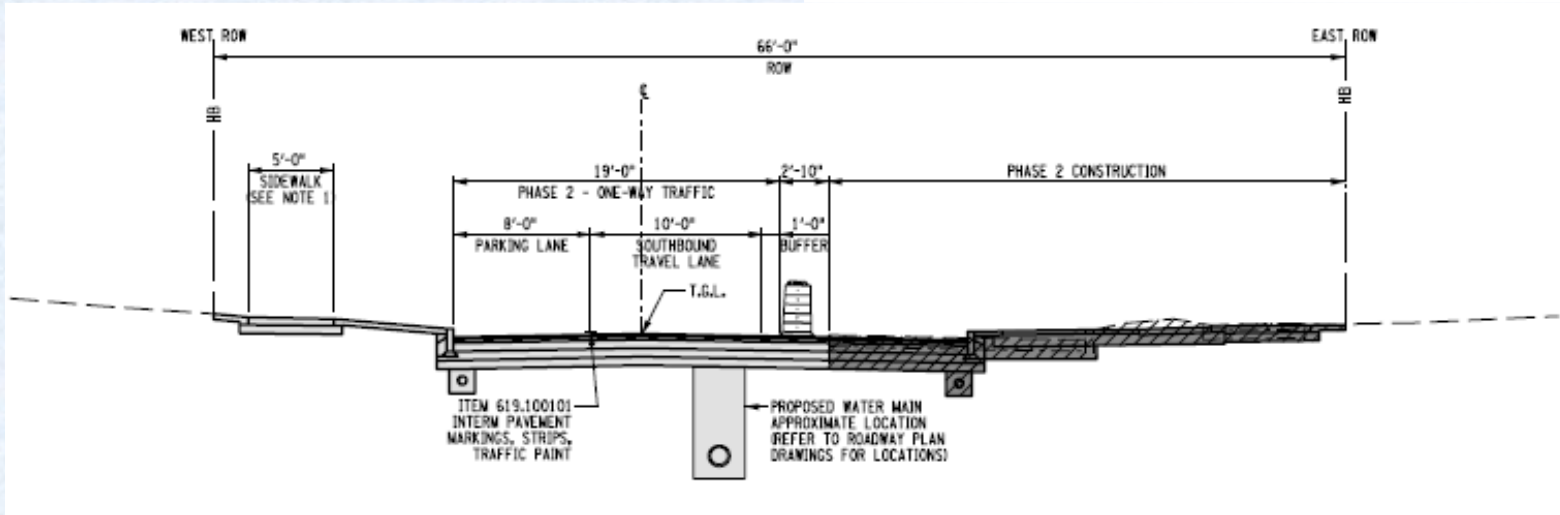
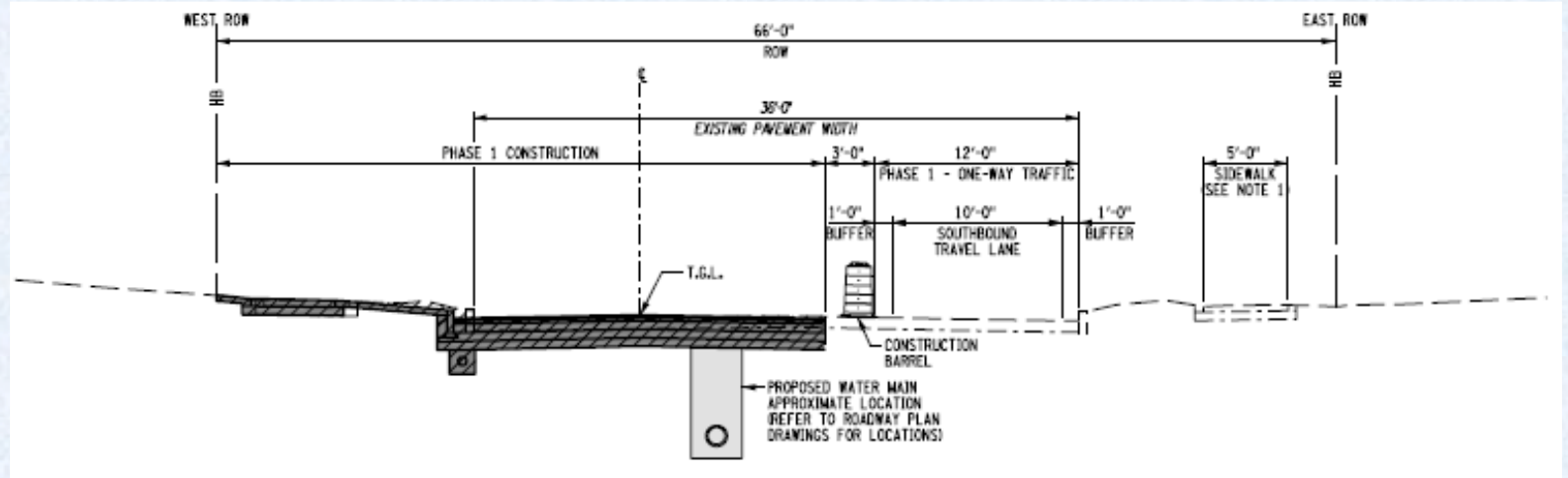
- Maintain SB flow to UPMC facilities and U of R Campus
- Section of Genesee Street between Elmwood Ave and Genesee Park Blvd to be maintained 2-way to Genesee Park Blvd





# Work Zone Traffic Control - Staging

Phase 1 Construction

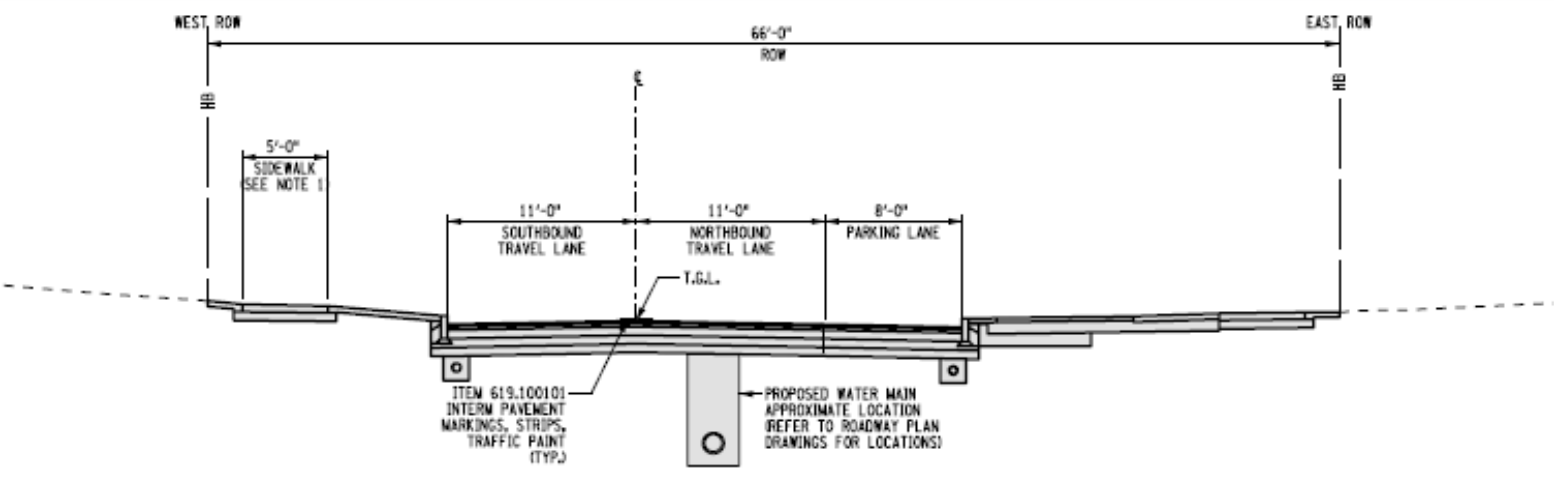
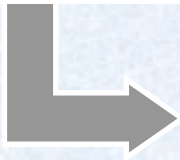


Phase 2 Construction



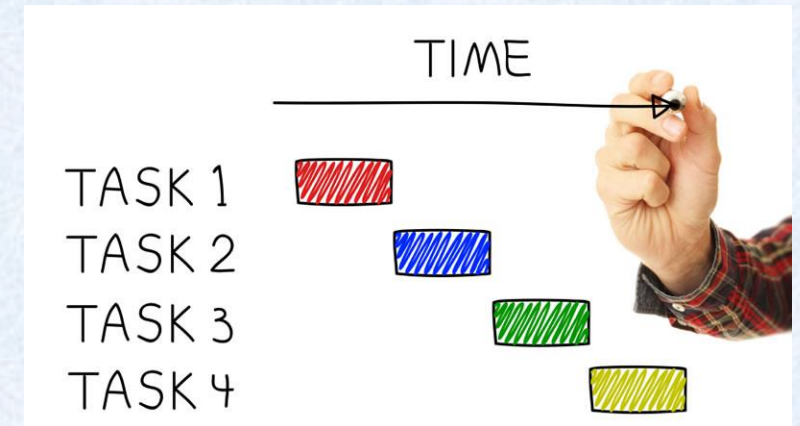
# Work Zone Traffic Control - Staging

Phase 3  
Construction



# Project Timeline

- Kick-Off January 2022
- Preliminary Design Jan. 2022 to Feb. 2023
- Public Meeting #1 February 2023
- Design Approval March 2023
- Final Design March 2023 to August 2023
- Public Meeting #2 June 2023
- Advertisement Fall 2023
- Construction April 2024 thru November 2025



# Questions & Answers



**If you are on a computer:**

Use the “raise your hand” feature to ask a question

**If you are on a phone:**

Dial \*9 to “raise your hand” to ask a question

# Contact Information

The presentation will be posted to the project webpage at:

<http://www.cityofrochester.gov/geneseestreet/>

Comments may be submitted to the Project Manager until one week after this Public Meeting. Any comments received by **Wednesday, July 26, 2023**, will be recorded and answered in the public meeting minutes.

## City Project Manager

Donna Clements, PE

Email: [Donna.Clements@CityofRochester.Gov](mailto:Donna.Clements@CityofRochester.Gov)

Phone: (585) 428-6601