

City of Rochester Multi-Site Parks Plan

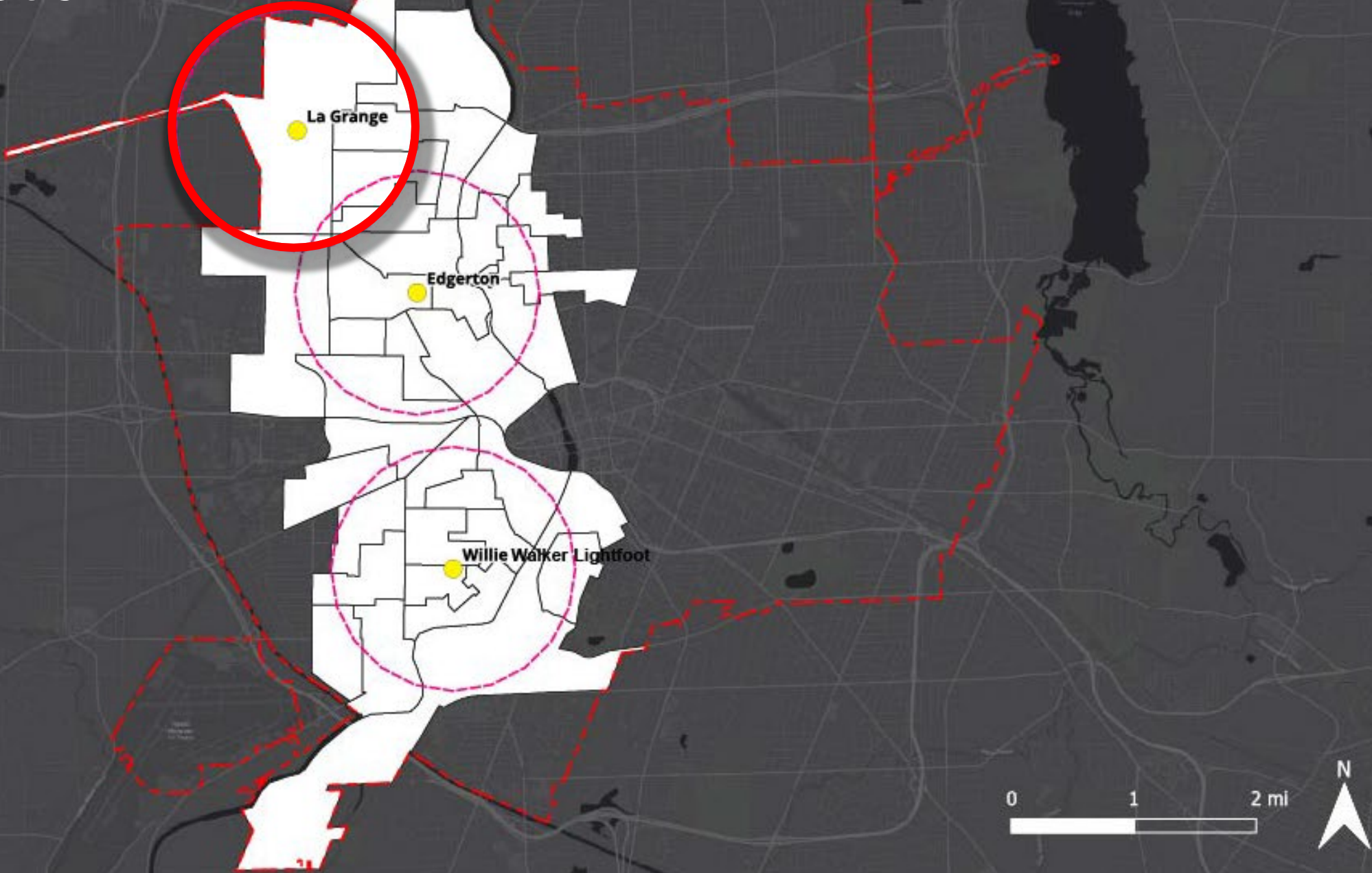
Public Meeting #1



May 15, 2024

SWBR

Project location.



How we got here.

Inventory + Analysis

Site Reconnaissance

Data Collection

Community Engagement
(ongoing)

★ **Consensus on program** ★



Inventory + Analysis

Site Reconnaissance

- Landscape Architecture
- Civil Engineering
- Mechanical



LA GRANGE PARK

455 La Grange Avenue

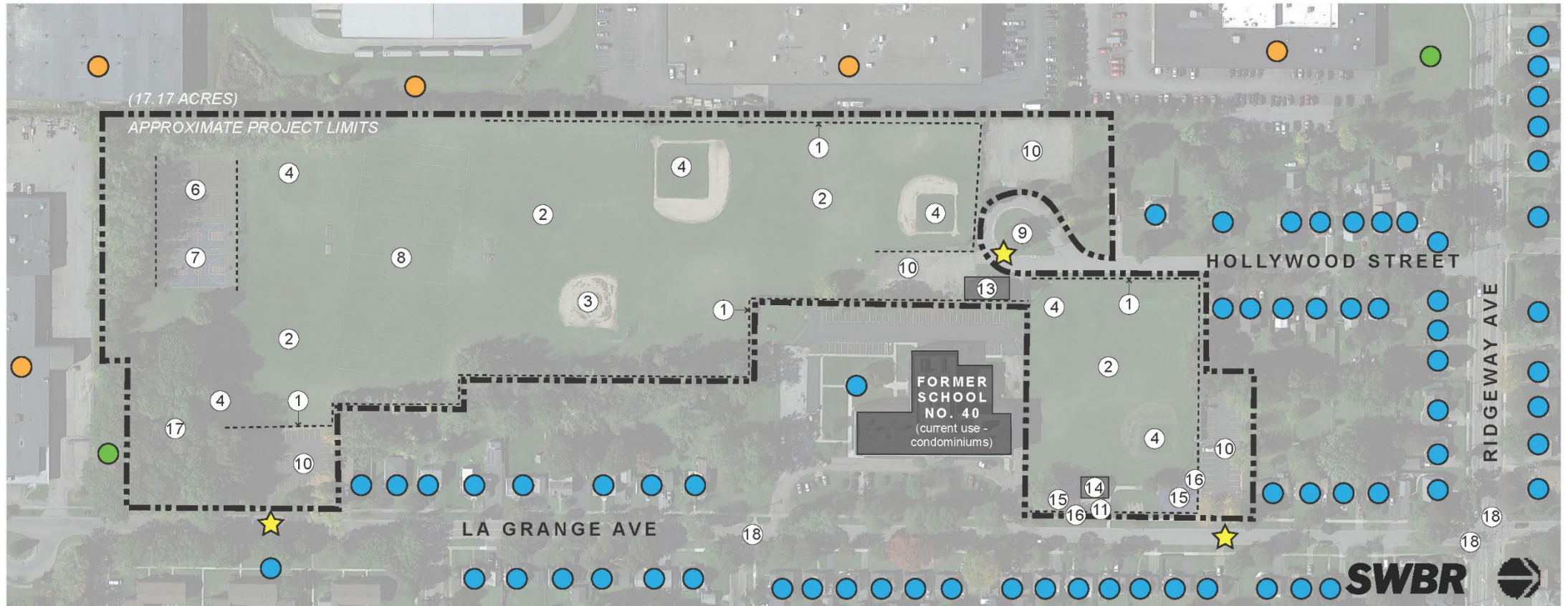
SITE FEATURES

- ★ Park Entrance
- ① Perimeter Chain Link Fencing
- ② Baseball Outfield
- ③ Clay Infield with Backstop
- ④ Grass Infield with Backstop
- ⑤ Field Lighting
- ⑥ Tennis Courts with Fence
- ⑦ Basketball Courts with Fence
- ⑧ Football Field

- ⑨ Drop-off Circle
- ⑩ Parking Lot
- ⑪ Bike Rack
- ⑫ Bus Stop
- ⑬ Concession Building/Restrooms
- ⑭ R-Center Building
- ⑮ Playground
- ⑯ Seating / Picnic Tables
- ⑰ Tree Cover
- ⑱ Crosswalk

NEIGHBORHOOD CONTEXT

- Residential Property
- Commercial Property
- Vacant Lot
- Industrial



LA GRANGE PARK

455 La Grange Avenue

SITE ANALYSIS:

ACCESS

1. Fences block access from parking and around playground
2. South entrance on La Grange Ave. not clearly visible from street
3. No sign of park entrance at Hollywood St. and Ridgeway Ave.
4. Gate to parking near concession building often locked when no event taking place

CIRCULATION & ACCESSIBILITY

5. Crosswalks not present in key locations across streets
6. No walking paths around site
7. Bike racks available on site
8. Restrooms in concession stand locked when no event happening
9. Portable toilets available on site

PLAY AREAS

10. Playground surface in poor condition, creating tripping hazards.
Playground equipment in fair condition, only minor repairs needed
11. Separate play areas for young children

SOCIAL SPACES

12. Seating available around playgrounds
13. No covered seating or gathering space near play areas
14. Limited seating around court games and ball fields
15. City Recreation building is no longer used for neighborhood activities

GREEN SPACE

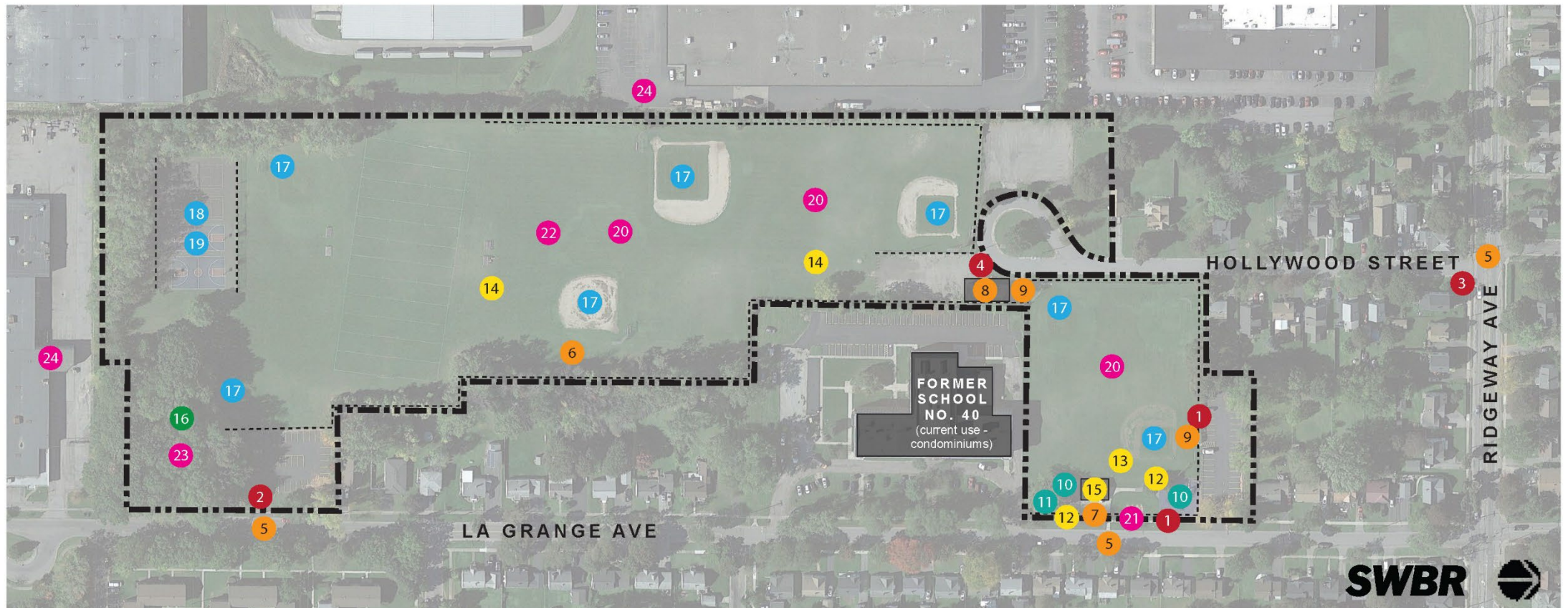
16. Wooded area at edge of site could be used for walking trails

ATHLETICS

17. Baseball fields overgrown with grass
18. Basketball and tennis surface in fair condition
19. Court games isolated from rest of site

SAFETY

20. No lighting at most baseball fields, basketball or tennis courts
21. No lighting in playground
22. No visibility from streets or community into middle of park
23. Low visibility into wooded area
24. Park is bordered by industrial land use on south and west sides, restricts pedestrian access, visibility into park, and neighborhood connectivity



Inventory + Analysis

Data Collection

Mapping:

- Age
 - Disability
 - Income
 - Tenure
 - Race
 - Land use
-
- Athletics + Participation



Inventory + Analysis

Community Engagement

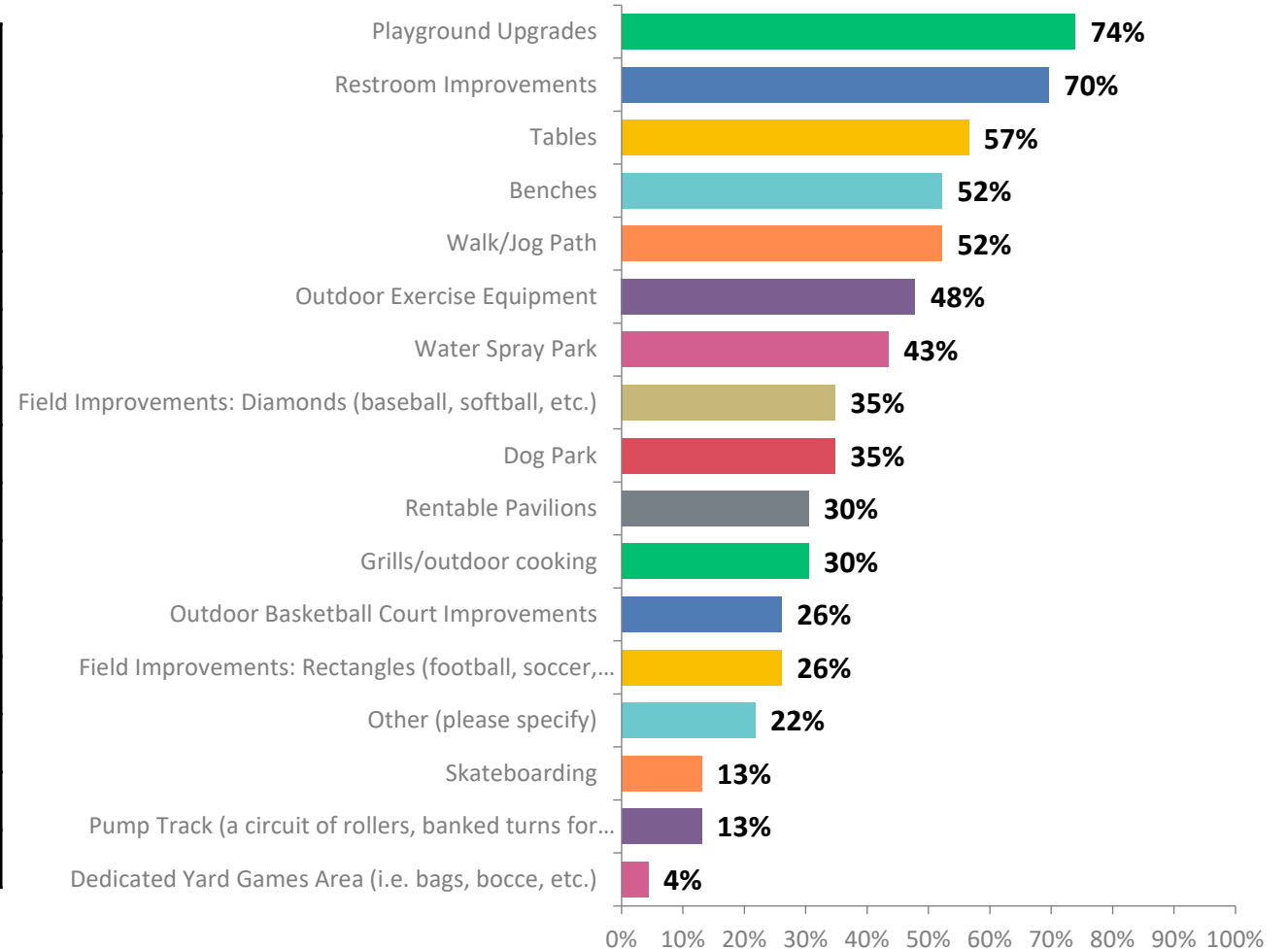
- One on one interview
- Pop-up events
- Survey
- PAC meetings (3 complete, 1 pending)
- **Public meetings (2)**
















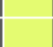


LaGrange Park Participation national vs. site specific

Outdoor Activities	Park Average	National Average	2023 Population
Baseball	4.5%	3.7%	502
Basketball	8.3%	7.6%	938
Exercise Walking	36.3%	37.3%	4,088
Football (flag)	2.1%	1.9%	242
Football (tackle)	2.1%	2.2%	232
Football (touch)	3.0%	2.7%	337
Lacrosse	1.1%	0.8%	126
Pickleball	1.9%	2.1%	212
Running/Jogging	14.8%	14.8%	1,666
Skateboarding	2.1%	2.1%	238
Soccer	4.6%	4.6%	522
Softball	3.0%	3.1%	337
Tennis	4.6%	4.7%	514

Q5: What amenities would you like to see at LaGrange Park? (Select all that apply)



Summary: La Grange Park

	Survey	Pop-up Event	City staff Scoping	PAC Meeting #1	Stakeholder Interviews
Playground Upgrades			★		★
Restroom Improvements		★	★		
Tables					
Benches/Bleachers		★			
Walking/Jogging Path					
Outdoor Exercise Equipment		★			
Water Spray Park		★			★
Fields Improvements (baseball, softball)			★		
Dog Park		★			
Rentable Pavilions					
Grills/outdoor cooking					
Outdoor Basketball Court Improvements		★	★		
Field Improvements (football, soccer, lacrosse)		★	★		
Skateboarding					
Pump Track		★			
Dedicated Yard Games Area		★			
Improve Visibility/Sightlines	<i>Not in survey</i>		★		
Increase Parking/Improve Parking Areas	<i>Not in survey</i>	★	★		★
Safety Improvements	<i>Not in survey</i>	★	★		
Remove/Replace Recreation Building	<i>Not in survey</i>	★	(remove)		★

Design Alternatives.

LA GRANGE PARK

455 La Grange Avenue

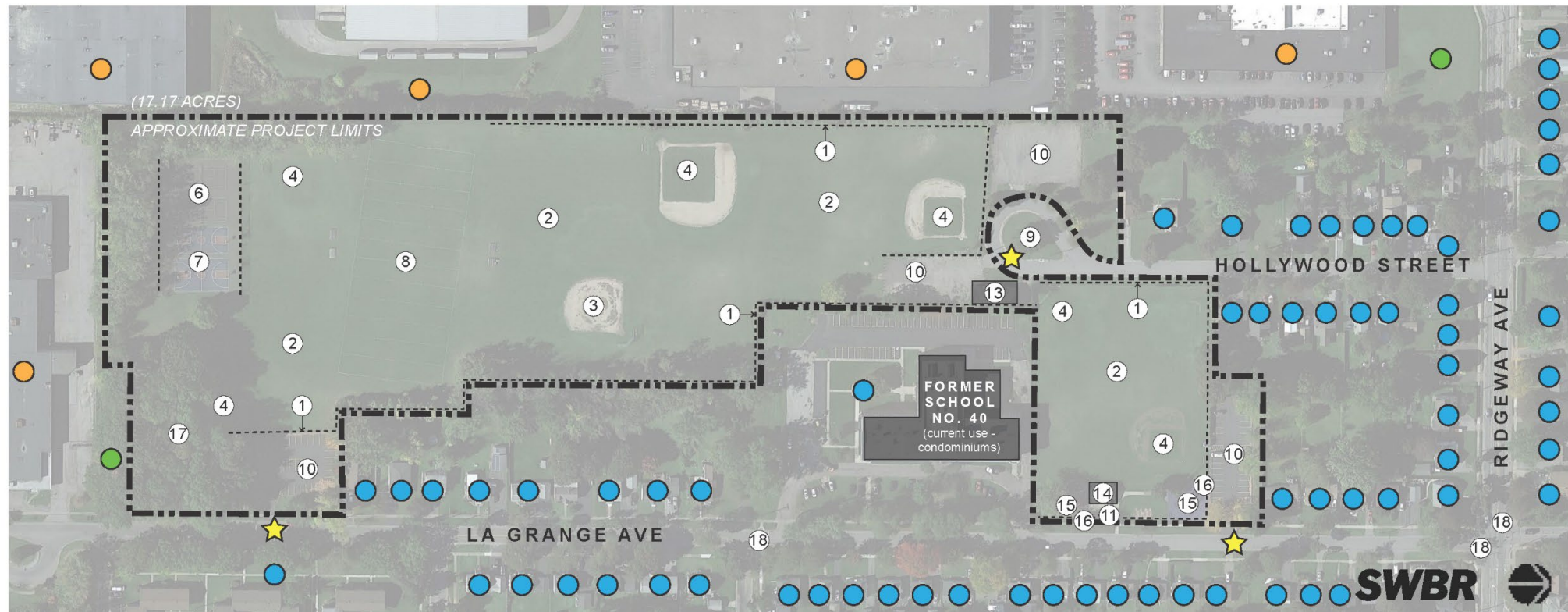
SITE FEATURES

- ★ Park Entrance
- ① Perimeter Chain Link Fencing
- ② Baseball Outfield
- ③ Clay Infield with Backstop
- ④ Grass Infield with Backstop
- ⑤ Field Lighting
- ⑥ Tennis Courts with Fence
- ⑦ Basketball Courts with Fence
- ⑧ Football Field

- ⑨ Drop-off Circle
- ⑩ Parking Lot
- ⑪ Bike Rack
- ⑫ Bus Stop
- ⑬ Concession Building/Restrooms
- ⑭ R-Center Building
- ⑮ Playground
- ⑯ Seating / Picnic Tables
- ⑰ Tree Cover
- ⑱ Crosswalk

NEIGHBORHOOD CONTEXT

- Residential Property
- Commercial Property
- Vacant Lot
- Industrial

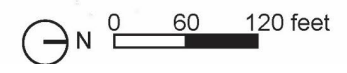


- ① Existing Tree Cover
- ② Multi-sport Field with Bleachers
- ③ Softball Field with Dugouts and Bleachers, Infield Fencing and Foul Poles
- ④ Baseball Field with Dugouts and Bleachers, Infield Fencing and Foul Poles
- ⑤ 10' wide Walking Path with Shaded Rest Stops and Dog Waste Stations
- ⑥ Redesigned Parking
- ⑦ Existing Parking
- ⑧ Entry Plaza with Dinettes and Sunshades
- ⑨ Entry Gateway with Signage
- ⑩ Dropoff Zone
- ⑪ Existing Concession/ Ticket Building
- ⑫ Picnic Area
- ⑬ Shade Structures
- ⑭ New Playground
- ⑮ 2 Basketball Courts with Bleachers
- ⑯ In-ground Splash Features
- ⑰ 2 Tennis/Pickleball Courts with Bleachers
- ⑱ Relocated Portable Toilets
- ⑲ Seating Area
- ⑳ Lockable Access Gate

Existing Parking Total: 102
New Parking Total: 174

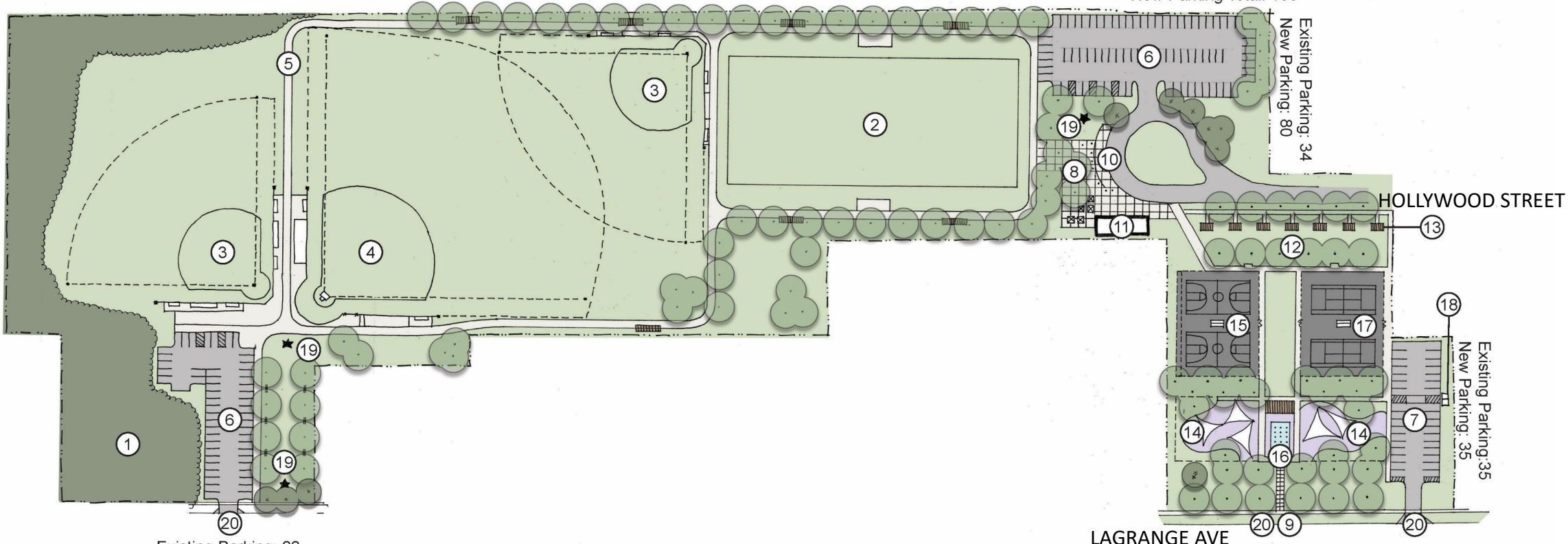


LaGrange Park Concept 1 LAGRANGE AVE
City of Rochester Multi-Parks Masterplan



- ① Existing Tree Cover
- ② Multi-sport Field with Bleachers
- ③ Softball Field with Dugouts and Bleachers, Infield Fencing and Foul Poles
- ④ Baseball Field with Dugouts and Bleachers, Infield Fencing and Foul Poles
- ⑤ 10' wide Walking Path with Shaded Rest Stops and Dog Waste Stations
- ⑥ Redesigned Parking
- ⑦ Existing Parking
- ⑧ Entry Plaza with Dinettes and Sunshades
- ⑨ Entry Gateway with Signage
- ⑩ Dropoff Zone
- ⑪ Existing Concession/ Ticket Building
- ⑫ Picnic Area
- ⑬ Shade Structures
- ⑭ New Playground
- ⑮ 2 Basketball Courts with Bleachers
- ⑯ In-ground Splash Features
- ⑰ 2 Tennis/Pickleball Courts with Bleachers
- ⑱ Relocated Portable Toilets
- ⑲ Park Signage/Landmark
- ⑳ Lockable Access Gate

Existing Parking Total: 102
New Parking Total: 168



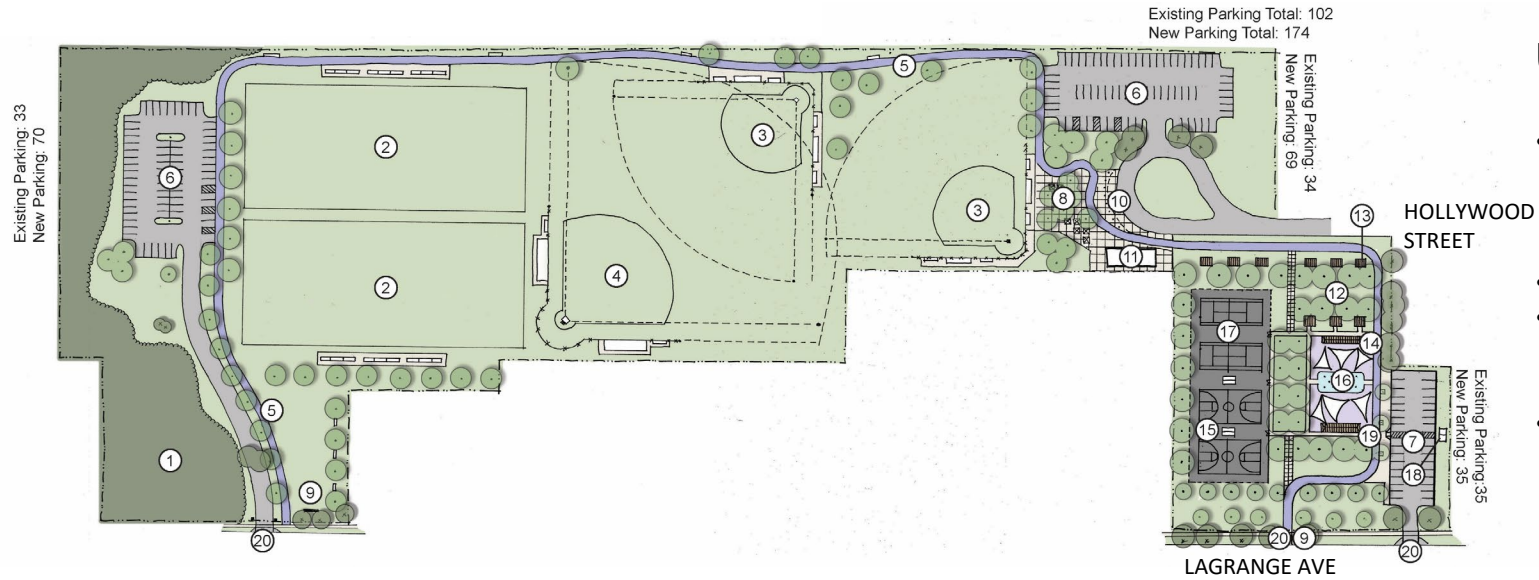
Existing Parking: 33
New Parking: 53

LAGRANGE AVE



LaGrange Park Concept 2
City of Rochester Multi-Parks Masterplan

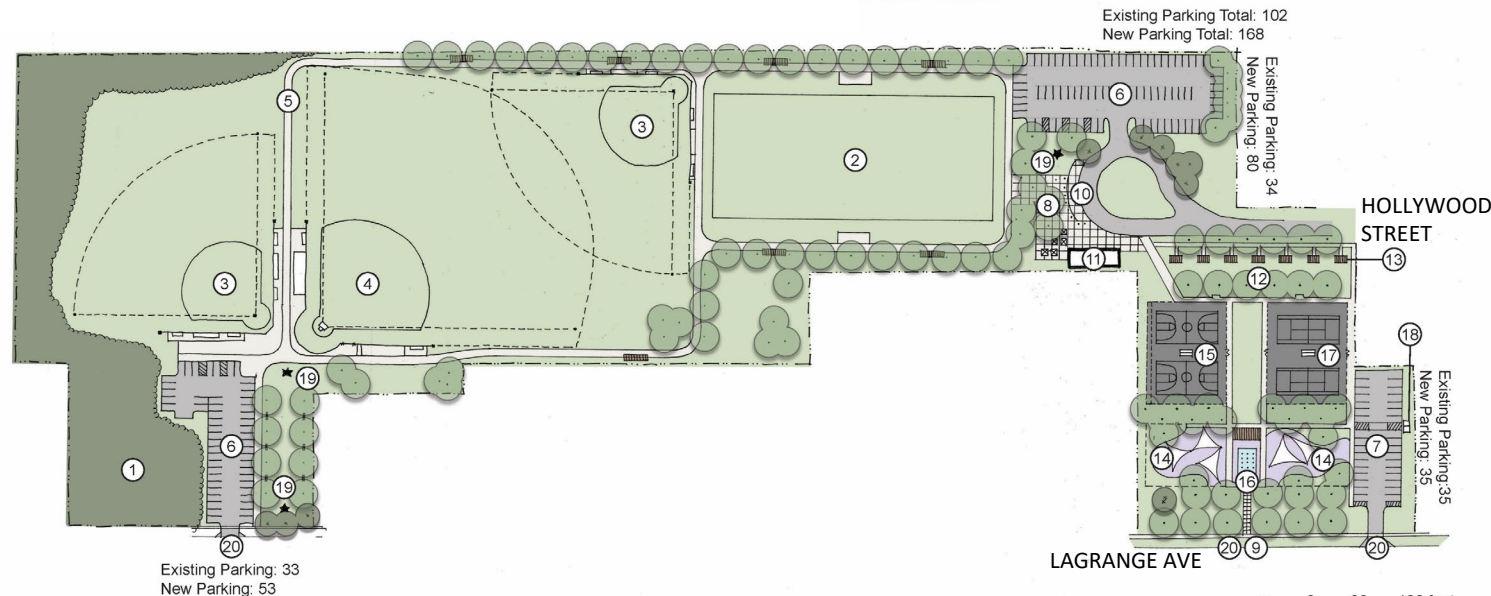
LaGrange Park Option 1



Unique features:

- New parking in footprint of existing basketball and tennis courts, no longer blocking pedestrian entrance to park
- 2x multipurpose fields
- Walking track w/ track surfacing around perimeter of park
- New parking total: 174

LaGrange Park Option 2



Unique features:

- Redesigned southern parking lot in same general location
- 1x multipurpose field
- Concrete / asphalt walking loop around perimeter of park
- New parking total 168



We want to hear from you.

Please follow the link below to vote on your favorite park design!

<https://www.surveymonkey.com/r/KX63L78>



ROCHESTER

387 East Main Street
Rochester, NY 14640
(585) 232-8300

SYRACUSE

309 South Franklin Street
Syracuse, NY 13202
(315) 488-5635

TROY

283 River Street
Troy, NY 12180
(518) 618-0900

SWBR.COM

SWBR