

# City of Rochester Multi-Site Parks Plan

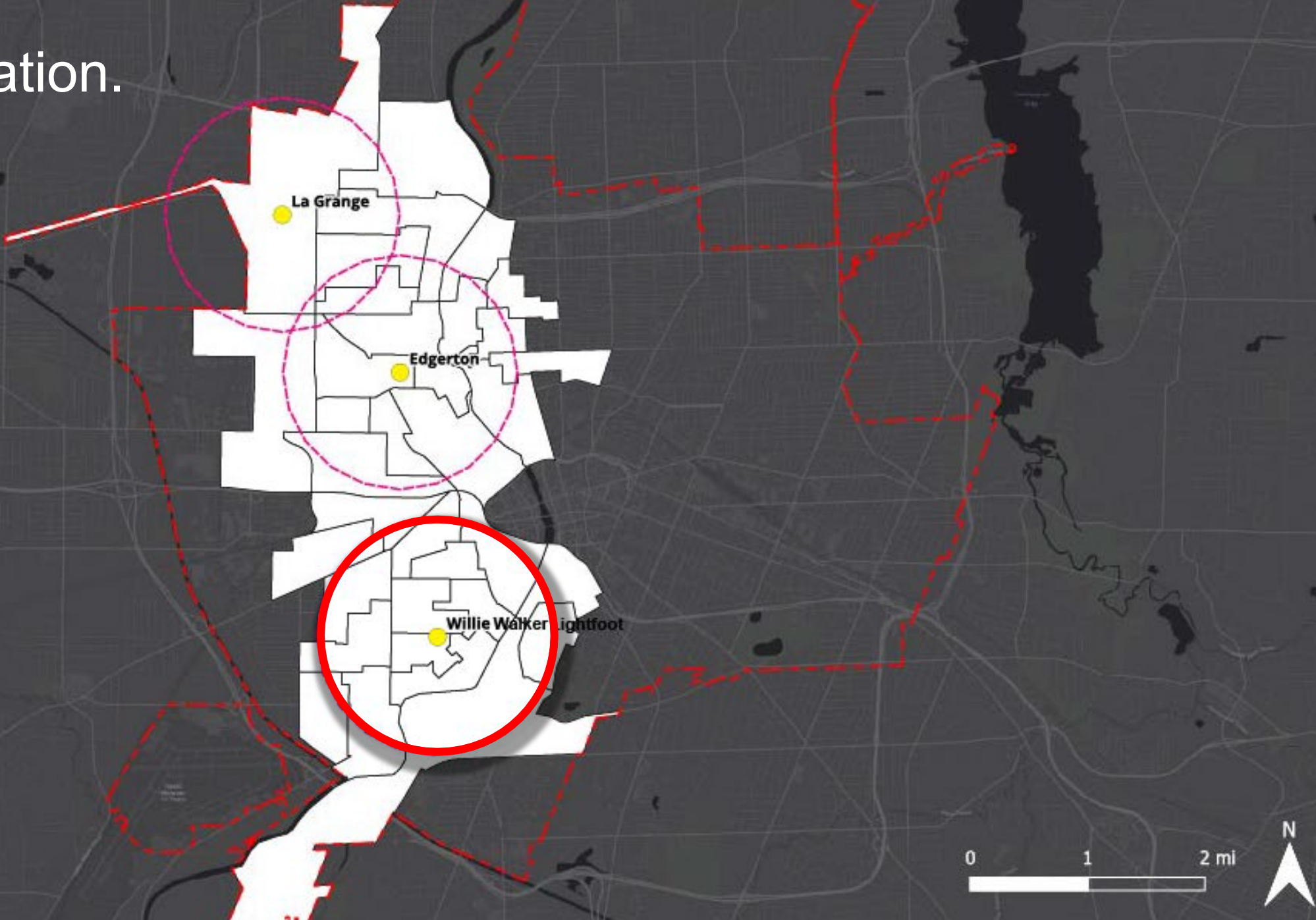
## Public Meeting #1



May 8, 2024

**SWBR**

# Project location.



How we got here.

# Inventory + Analysis

Site Reconnaissance

Data Collection

Community Engagement

(ongoing)

★ Consensus on program ★



# Inventory + Analysis

## Site Reconnaissance

- Landscape Architecture
- Civil Engineering
- Mechanical



Parks  
lan

Parks Master Plan for Edgerton  
Park, including strategies and costs  
features, and landscapes!

ur Thoughts!  
minutes!

/edgertonpark



/r/lightfootpark



m/r/lagrangepark



rkplanning

# WILLIE WALKER LIGHFOOT R-CENTER

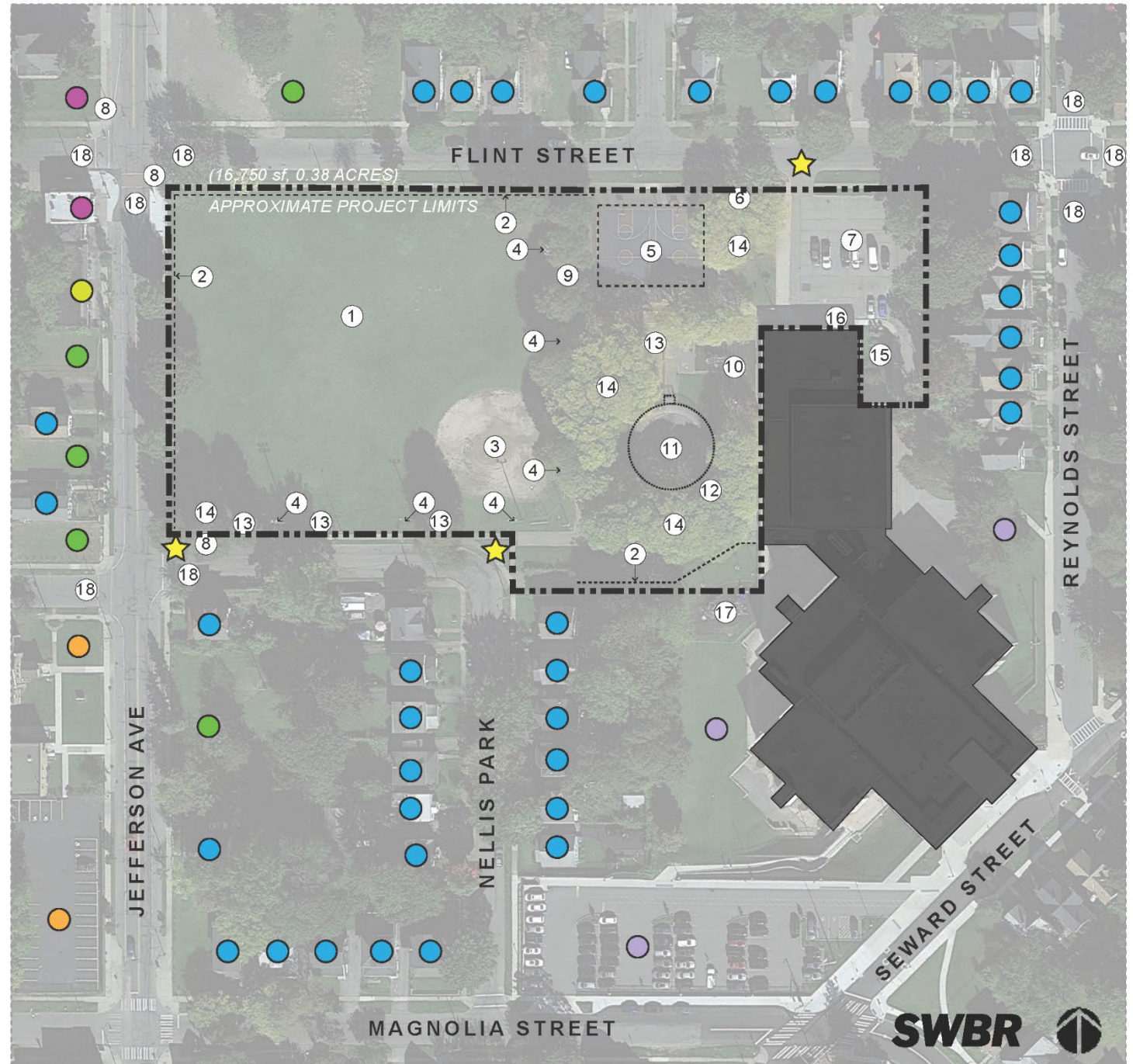
271 Flint Street

## SITE FEATURES

- ★ Park Entrance
- ① Baseball Field
- ② Perimeter Chain Link Fencing
- ③ Clay Infield with Backstop
- ④ Field Lighting
- ⑤ Basketball Courts with Fence
- ⑥ Front Plaza
- ⑦ Parking Lot
- ⑧ Bus Stop
- ⑨ Adult Fitness Equipment
- ⑩ Playground
- ⑪ Pool with Fence
- ⑫ Pool Mechanical House
- ⑬ Seating/Picnic Tables
- ⑭ Tree Cover
- ⑮ Raised Garden Beds
- ⑯ Butterfly Garden
- ⑰ School Playground
- ⑱ Crosswalk

## NEIGHBORHOOD CONTEXT

- Residential Property
- Commercial Property
- Vacant Commercial
- Vacant Lot
- School Property
- Church



# WILLIE WALKER LIGHFOOT R-CENTER

271 Flint Street

## SITE ANALYSIS:

### ACCESS

1. Entrance prioritizes cars over pedestrian, limited visibility from street
2. Front plaza has no clear use
3. Fencing along streets limits access
4. Cars can access ball field, tire damage seen on infield
5. No bike racks or scooter parking

### CIRCULATION & ACCESSIBILITY

6. Crosswalks not present in key locations across Jefferson St. and Flint St.
7. Walkway to pool is very steep
8. Walkways, curbs and slopes around basketball and playground are inefficient and difficult to use
9. Only opening in basketball fence is along Flint St., no connection to fitness equipment or playground
10. Restrooms available in R-Center, but not easily accessible from site

### PLAY & POOL

11. Playground surface in poor condition creating trip hazards. Playground equipment in fair condition
12. Pool has limited deck space, no seating, limited opportunities for socialization
13. School playground nearby, possibility to combine uses

### SOCIAL SPACES

14. Tables along Nellis Park under shade trees
15. Benches around playground are varying styles
16. No seating around basketball court or baseball field

### GREEN SPACE

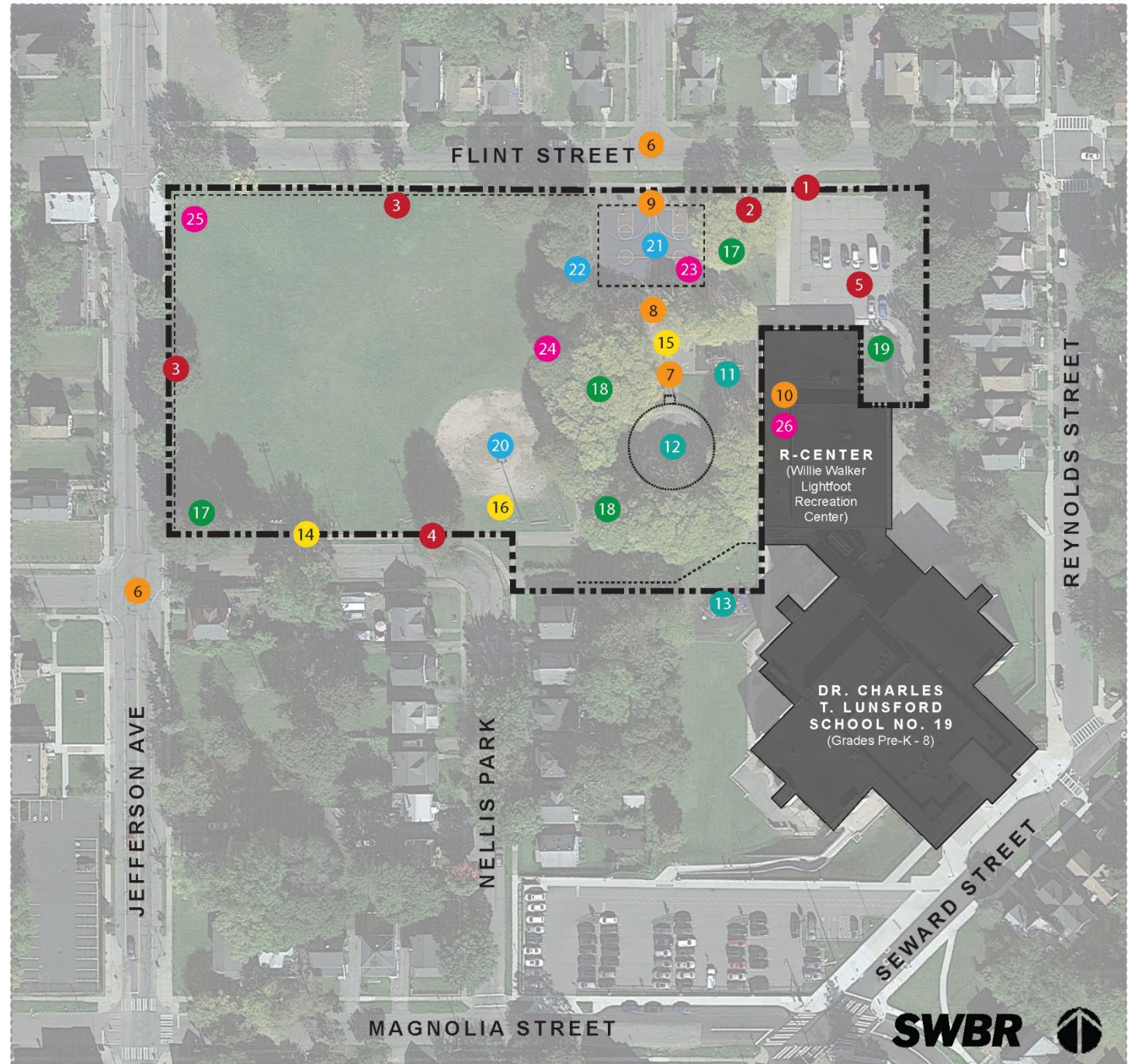
17. Mature trees around site provide shade and enclosure
18. Grassy slopes around pool provide passive recreation space
19. Raised garden beds and butterfly garden near R-center provide ecosystem services and outdoor education

### ATHLETICS

20. Baseball field has clay present in infield, some maintenance required
21. Basketball surface in fair condition
22. Workout equipment functional, but limited and isolated

### SAFETY

23. No lighting at basketball courts
24. Lighting at baseball field not adequate for night games, trees block light
25. Fencing is unwelcoming and reduces pedestrian circulation in and out of park
26. Low visibility from R-Center to playground



# Inventory + Analysis

Data Collection

Mapping:

- Age
- Disability
- Income
- Tenure
- Race
- Land use
  
- Athletics + Participation





# Inventory + Analysis

## Community Engagement

- One on one interview
- Pop-up events
- Survey
- PAC meetings (3 complete, 1 pending)
- **Public meetings (2)**



Parks  
lan

Parks Master Plan for Edgerton Park, including strategies and community features, and landscapes!

ur Thoughts  
minutes!

/edgertonpark



/r/lightfootpark



m/r/lagrangepark

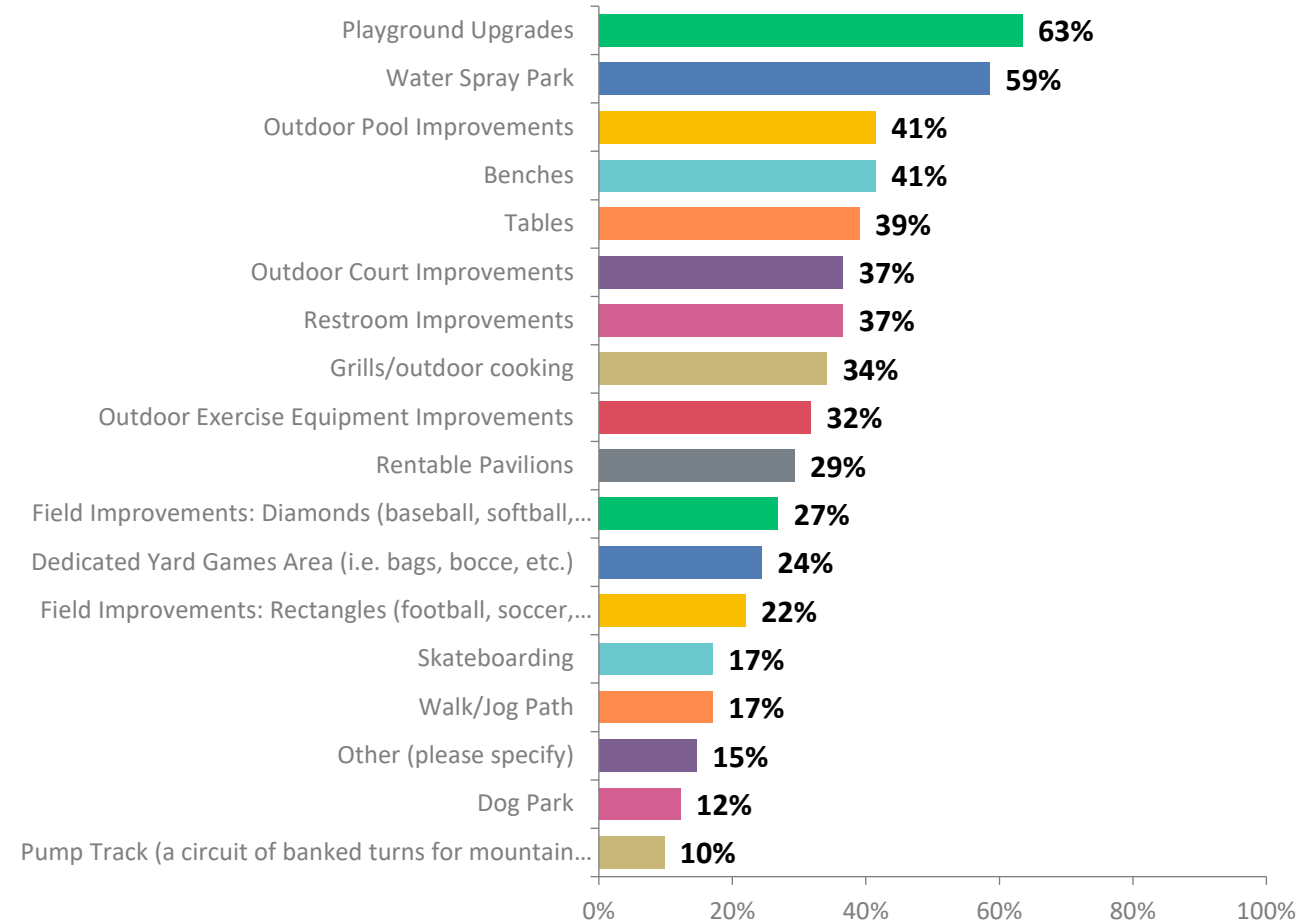


arkplanning
















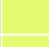

## Willie Walker Lightfoot Athletics Participation national vs. site specific

Outdoor Activities	Park Average	National Average	2023 Population
Baseball	4.4%	3.7%	1,112
Basketball	8.3%	7.6%	2,088
Exercise Walking	36.0%	37.3%	9,061
Football (flag)	2.1%	1.9%	535
Football (tackle)	2.1%	2.2%	523
Football (touch)	3.0%	2.7%	749
Lacrosse	1.1%	0.8%	283
Pickleball	1.9%	2.1%	472
Running/Jogging	14.8%	14.8%	3,713
Skateboarding	2.2%	2.1%	553
Soccer	4.6%	4.6%	1,163
Softball	2.9%	3.1%	741
Tennis	4.5%	4.7%	1,143

## Q5: What amenities would you like to see at Willie Walker Lightfoot Park? (Select all that apply)



# Summary: Willie Walker Lightfoot Park

	Survey	Pop-up Event	City staff Scoping	PAC Meeting #1	Stakeholder Interviews
Playground Upgrades		★	★	★	
Water Spray Park		★	★		★
Outdoor Pool Improvements		★	★	★	
Benches/Bleachers		★			
Tables		★	★		
Outdoor Court Improvements (basketball, tennis)		★	★	★	
Restroom Improvements					
Grills/outdoor cooking		★	(remove)		
Outdoor Exercise Equipment Improvements		★	(remove)		★
Rentable Pavilions		★			
Fields Improvements (baseball, softball)		★	★		
Dedicated Yard Games					
Field Improvements (football, soccer, lacrosse)					
Skateboarding		★			
Walking/Jogging Path		★			
Dog Park					
Pump Track					
Lighting Improvements	<i>Not in survey</i>		★	★	
Parking Improvements	<i>Not in survey</i>		★	★	
Safety Improvements	<i>Not in survey</i>	★	★	★	★
Fencing and Gateway Improvements	<i>Not in survey</i>		★		★
Historic Signage	<i>Not in survey</i>				★
Family/Respite Services	<i>Not in survey</i>	★			

# Design Alternatives.

# WILLIE WALKER LIGHFOOT R-CENTER

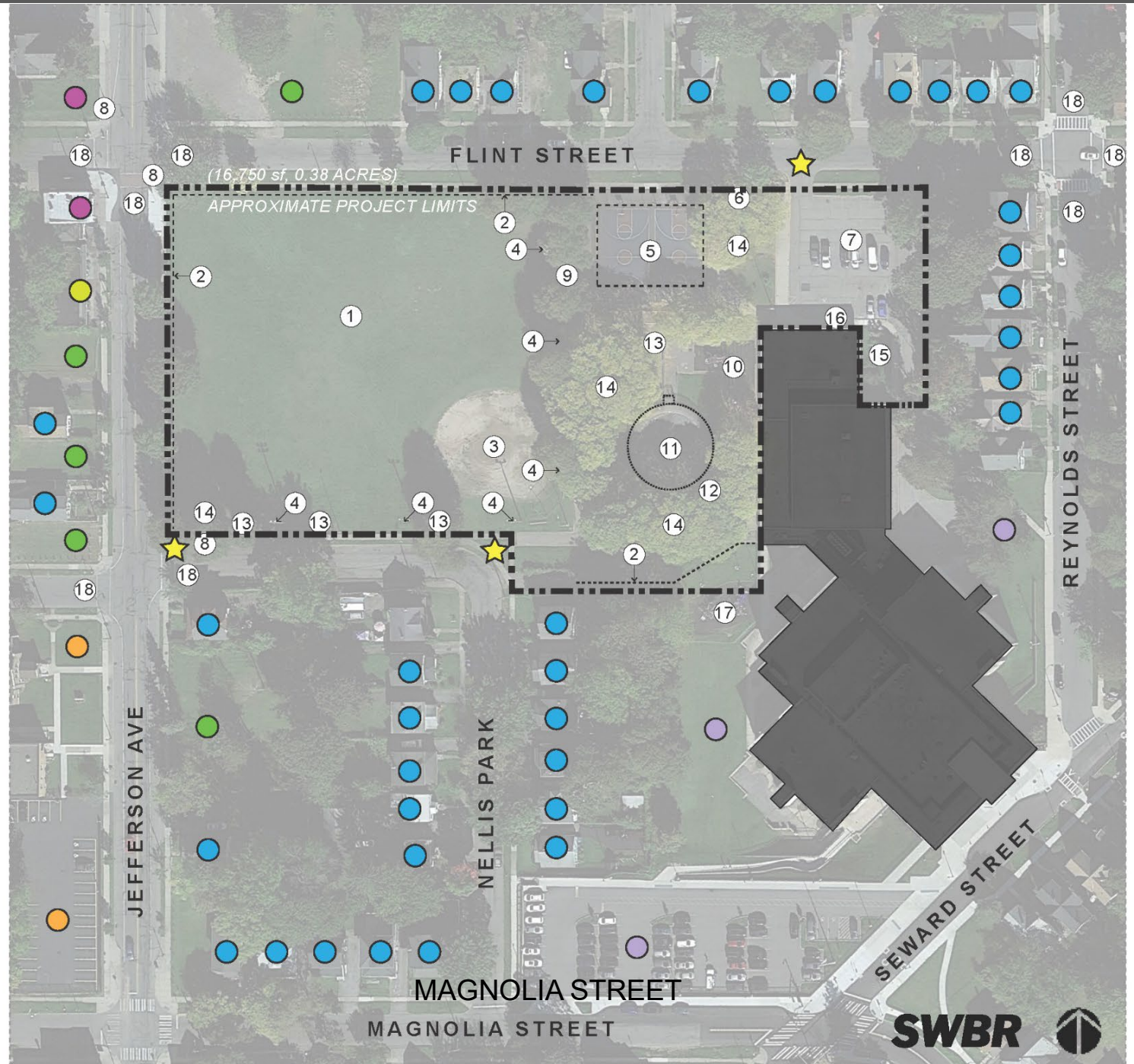
271 Flint Street

## SITE FEATURES

- ★ Park Entrance
- ① Baseball Field
- ② Perimeter Chain Link Fencing
- ③ Clay Infield with Backstop
- ④ Field Lighting
- ⑤ Basketball Courts with Fence
- ⑥ Front Plaza
- ⑦ Parking Lot
- ⑧ Bus Stop
- ⑨ Adult Fitness Equipment
- ⑩ Playground
- ⑪ Pool with Fence
- ⑫ Pool Mechanical House
- ⑬ Seating/Picnic Tables
- ⑭ Tree Cover
- ⑮ Raised Garden Beds
- ⑯ Butterfly Garden
- ⑰ School Playground
- ⑱ Crosswalk

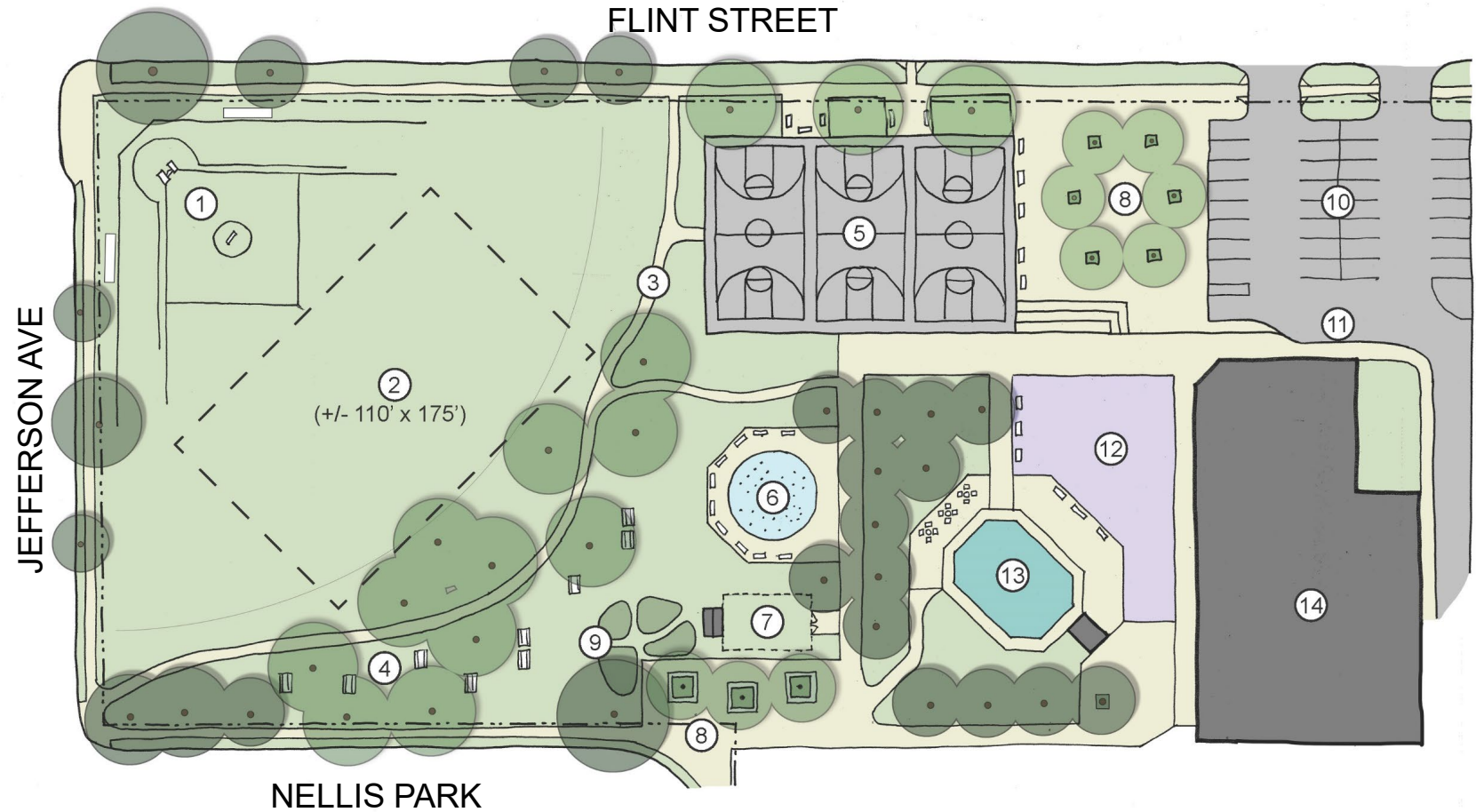
## NEIGHBORHOOD CONTEXT

- Residential Property
- Commercial Property
- Vacant Commercial
- Vacant Lot
- School Property
- Church

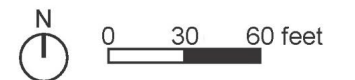


- ① Softball Field with Backstop and Bleachers
- ② Area for "Rectangle" Games
- ③ Walking Path
- ④ Picnic Area
- ⑤ 3 Basketball Courts
- ⑥ Splash Pad
- ⑦ Community Garden with Shed
- ⑧ Entry Plaza
- ⑨ Pollinator Garden
- ⑩ Expanded Parking
- ⑪ Dropoff Zone
- ⑫ Expanded Playground with Seating
- ⑬ New Pool at Grade with Surrounding Seating
- ⑭ School Building

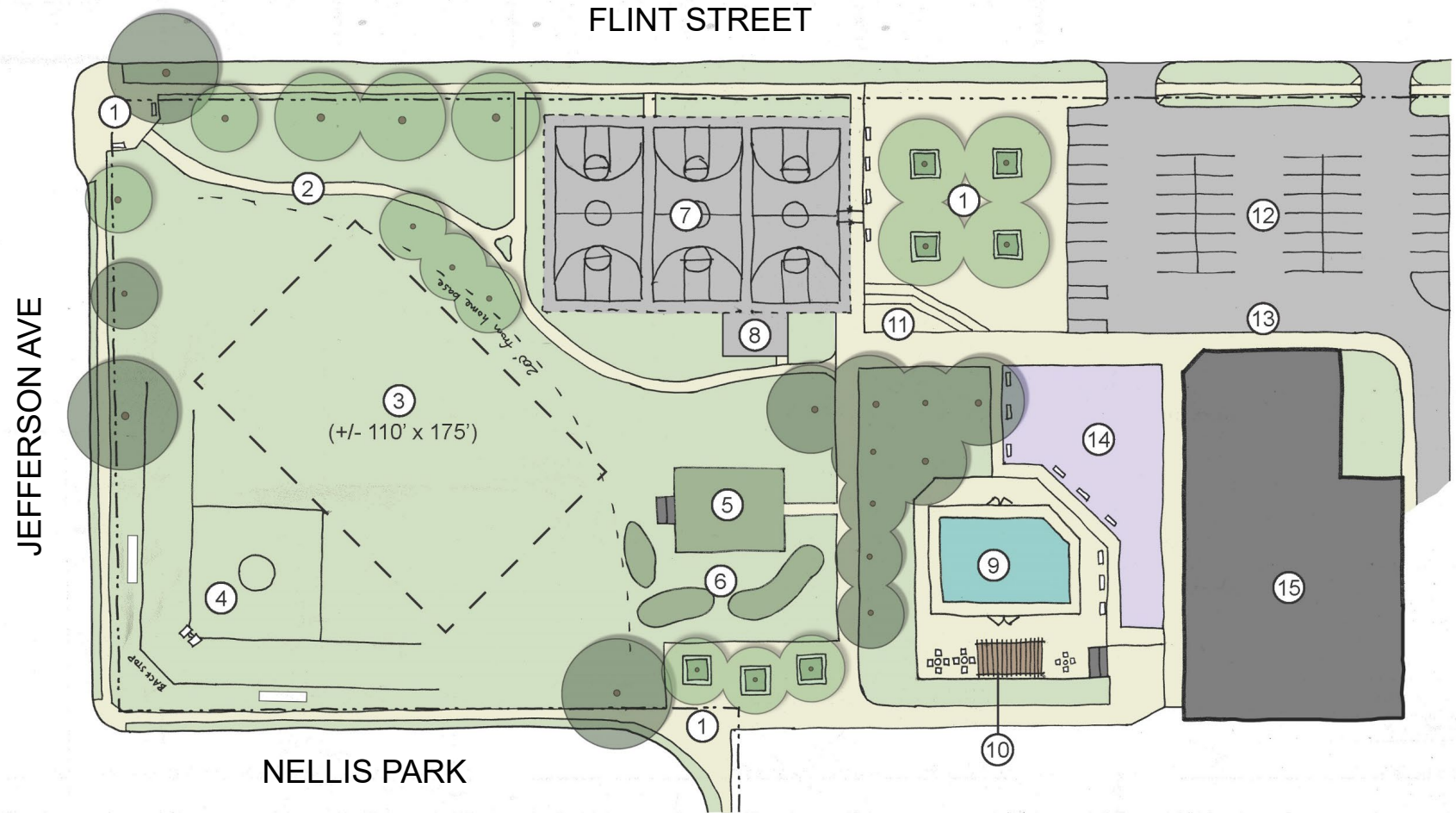
Existing Parking Total: 23  
 New Parking Total: 33



**Willie Walker Lightfoot R-Center Concept 1**  
 City of Rochester Multi-Parks Masterplan

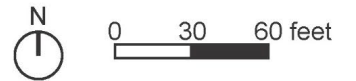


- ① Entry Plaza
- ② Walking Path
- ③ Area for "Rectangle" Games
- ④ Softball Field with Backstop and Bleachers
- ⑤ Community Garden with Shed
- ⑥ Pollinator Garden
- ⑦ 3 Basketball Courts
- ⑧ Fitness Equipment
- ⑨ New Pool
- ⑩ Shade Shelters
- ⑪ Wide Step Seating
- ⑫ Expanded Parking
- ⑬ Dropoff Zone
- ⑭ Expanded Playground with Seating
- ⑮ School Building

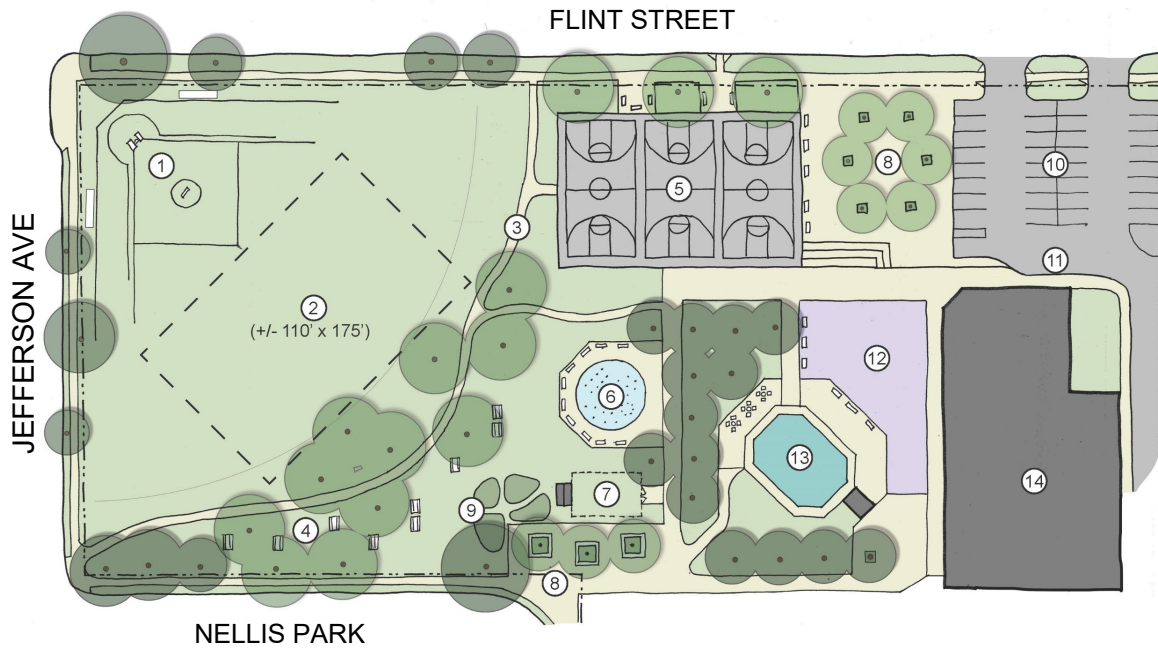


Existing Parking Total: 23  
 New Parking Total: 42

**Willie Walker Lightfoot R-Center Concept 2**  
 City of Rochester Multi-Parks Masterplan



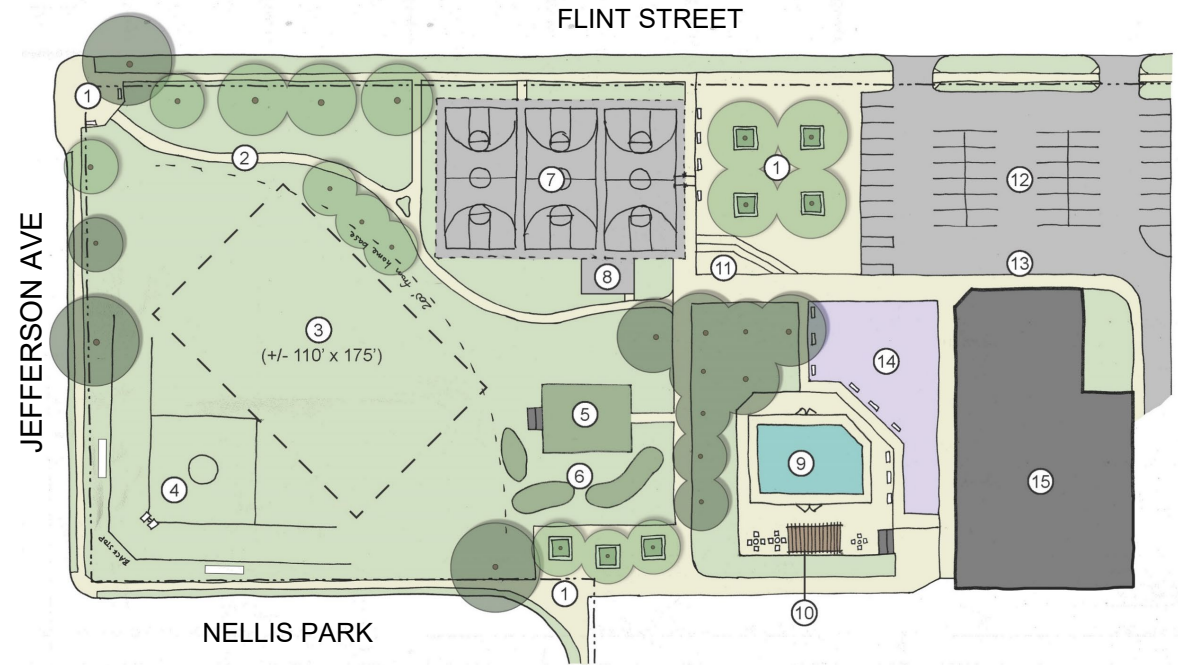
## Willie Walker Lightfoot Park Option 1



### Unique features:

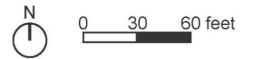
- Parking footprint remains largely unchanged
- Separate splash pad w/ inground features
- Softball in northwest corner blocking pedestrian access
- More mature trees are preserved
- Picnic area
- Existing parking 23 – new parking 33

## Willie Walker Lightfoot Park Option 2



### Unique features:

- Expanded parking footprint
- Fitness equipment
- Softball in southwest
- Shade pergola adjacent to pool
- Mature trees are removed in southwest corner and south of pool to accommodate softball and ease pool maintenance
- Existing parking 23 – new parking 42





# We want to hear from you.

Please follow the link below to vote on your favorite park design!

<https://www.surveymonkey.com/r/KNT6Z7H>



## **ROCHESTER**

387 East Main Street  
Rochester, NY 14640  
(585) 232-8300

## **SYRACUSE**

309 South Franklin Street  
Syracuse, NY 13202  
(315) 488-5635

## **TROY**

283 River Street  
Troy, NY 12180  
(518) 618-0900

SWBR.COM

**SWBR**