

**City of Rochester**

**Village Trustee Proceedings**

**Index Section for**

**05/1817**

**to**

**03/1828**

**\*\* NOTE: Some Books have an A to Z index followed by a second A to Z index**

Ullage  
Trustees  
1817-1828

#1

s

gs

ex

Alley from Ave to Platt st 76  
" " Clinton to Stone, 47.

gs

Backus A. J. 1

Barnard J. 40

Bugnew, to protect property  
at Fires 289.

Bender, A. B. 1,29,51

Beach Rufus 61-6,82.

(see 7 '26) 1,

Laws 2, 3-10, 33, 61, 63,

Milliard Tables 62,

Postal C.B. 136,

Brown, Jr. 1

do M. 34, 42, 51, 61, 82

(revised) 1,

Buffalo St Cemetery 45, 80

Buffalo St Extension 132

" Widening, 170, 225,

" Arise of. 191,

Board of Health 257,

Chapter, No. 29, 34, 42

Census 70, 76, 86, 251-2

Charter Amendment, 49, 206

Catholic Cemetery 150, 156, 159,

Quint. et Sextidow 127, 130, 176, 187,  
" 211, 217, 219, 252,  
Michigan 178, 263,

gs



De Witt Clinton's death 264

Seeds of Stillman + part of  
Main-st. 264

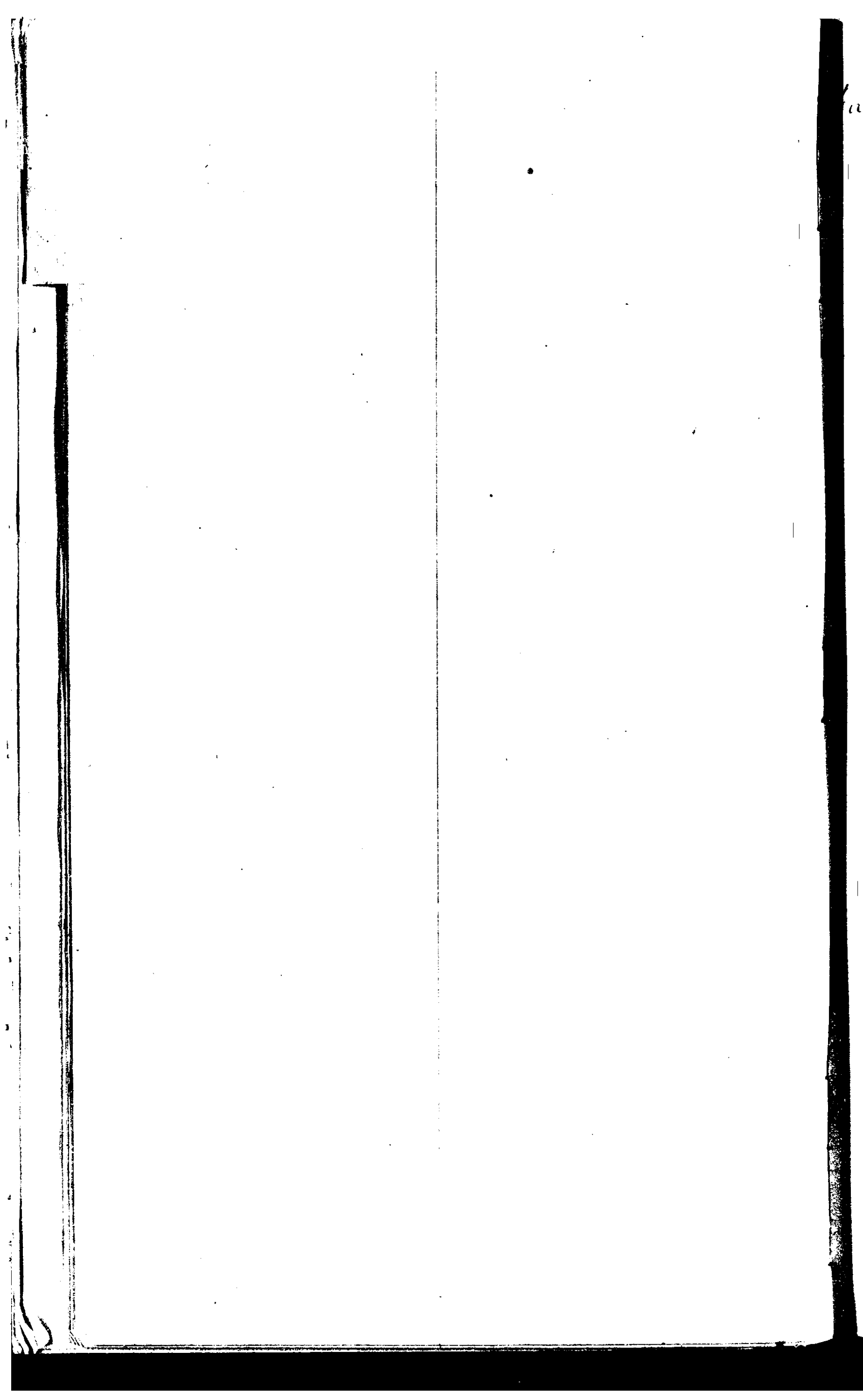
Doq Law 30,34

gs

Exchange street named 24

Ely street 86, 91, 102, 174

gs



imens By Laws 15.

gs

Green-st. 154, 160.

Globe Building (cut of wire) 168

gs



May-Weighing 12, 84, 86, 88, 91,

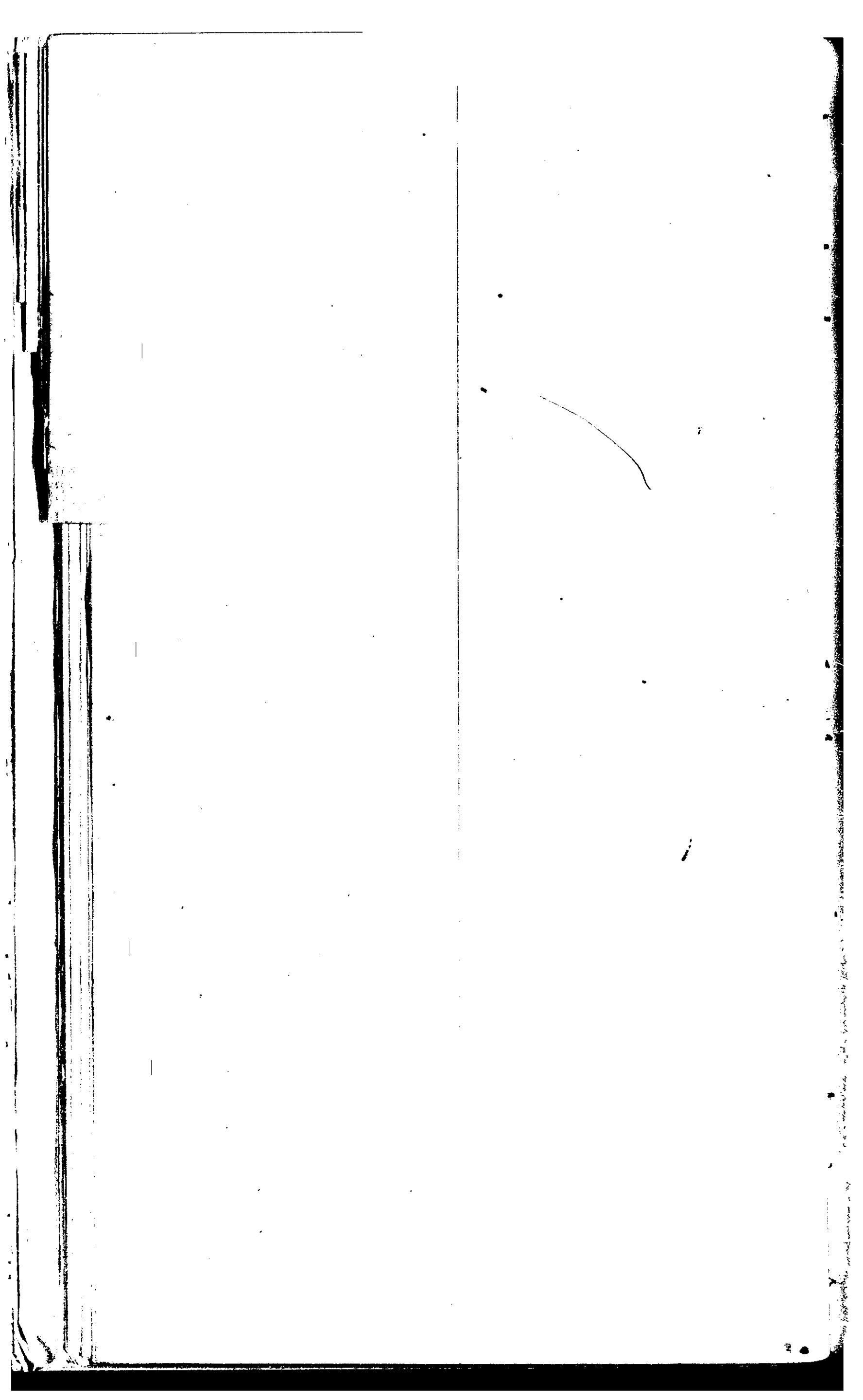
Heart-st. Continuation 182, 185,

High sh Extended 97, 100, 103, 125, 132,  
175, 182

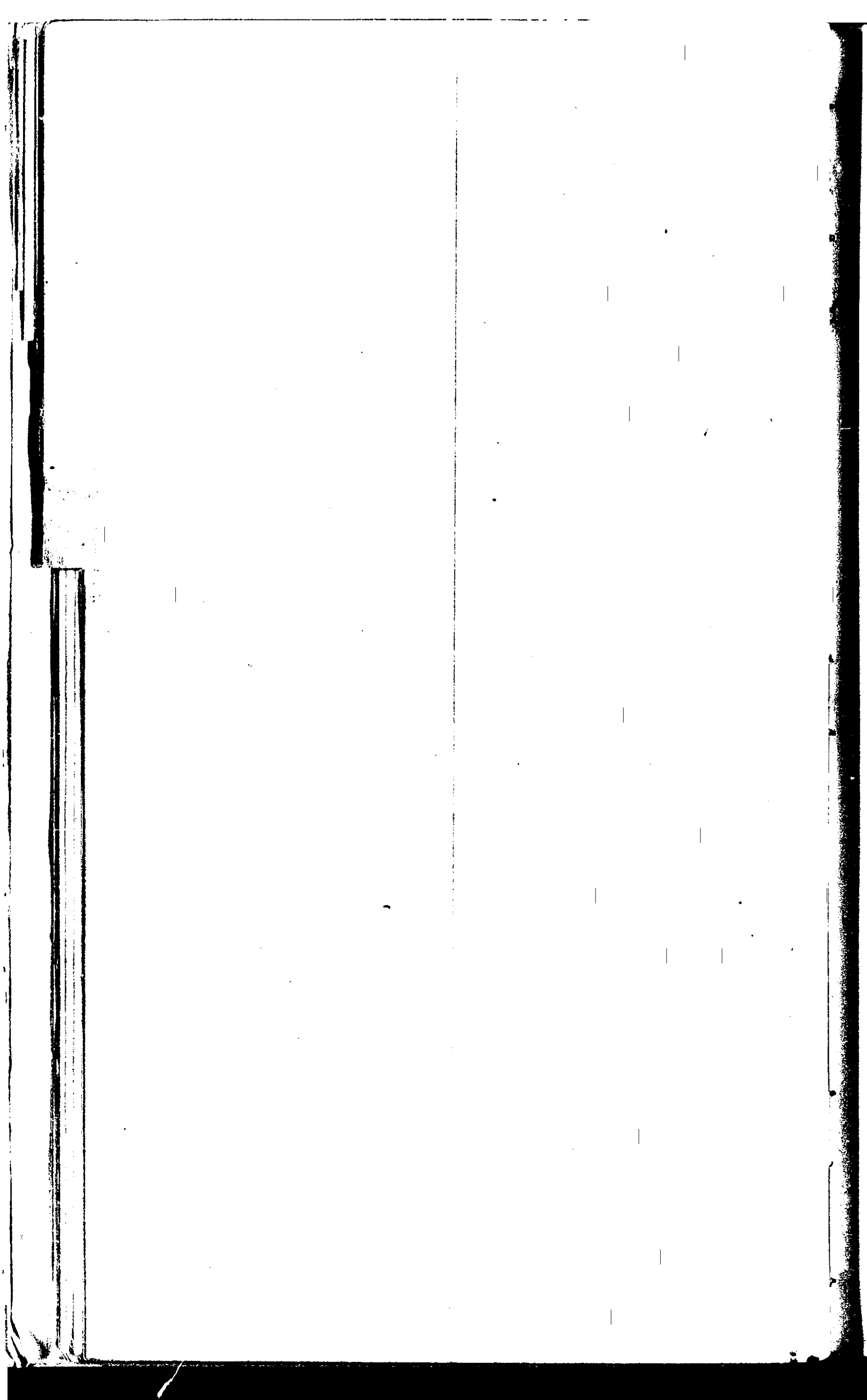
gs



gs



gs



gs



Lancaster st, 156, 167, 206, 263,

gs

Mason st. 85-6 (recd. 7, 26) 30, 31, Mechanic's Canal st, 18  
18, 133,

Market <sup>2</sup> 37, 70, 72, 73, 78, 43, 103, 45  
107, 115, 144, 232  
" 1600, 248,

Main st Extension 130

Main st North line, 164, -5, 170,

gs

New Street, from River st to  
Exchange st 134, 135,

New Street, from Canal to River st 138  
141,

New Street from High school lot  
to Chestnut st. 153,

*Mine pins 87*

gs

Ciduauea, Puae, 19-28, 32,  
52-60, 68, 79, 83,  
(recor of '26) 17, 180,

Quercus of Highway 50.

gs



Pavement of Street, Ormaiztegui 1827-28 Pedlar 76.

" " 25 7-8

Post House 125

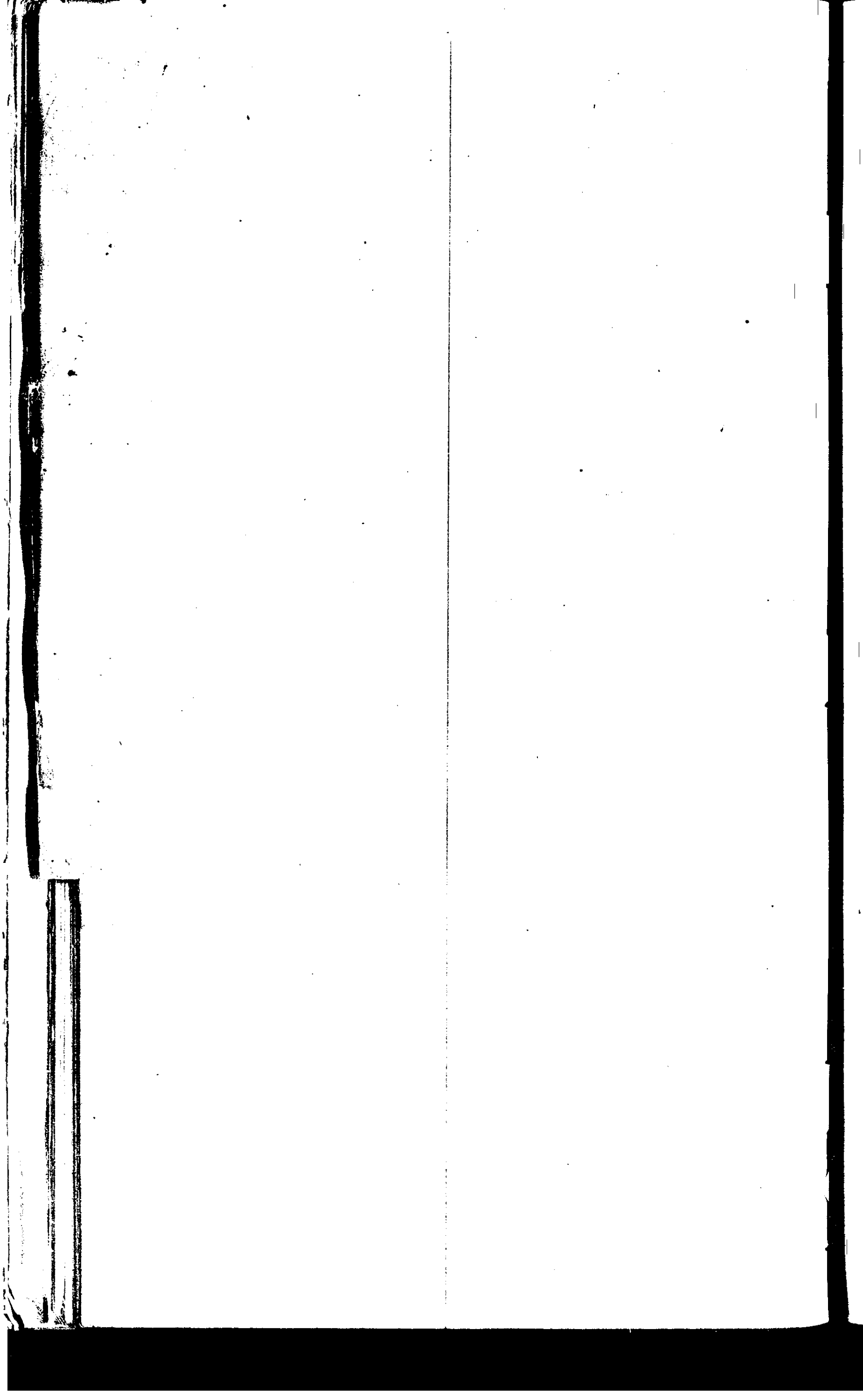
Styford-st 127

Sound 11, 30, 40

Public square Alley 71, 77, 101, 102

Publishing Proceeding 99,

gs



gs

Reservoir in Carroll st 90.95.  
Reservoir, has to construct, 34.39

River Alley 4<sup>2</sup>, 70, 72, 75, 77.

gs

Scranton, Pa. 1

Seat 13, (3 rows, '26)

Saturday night, no Theatre 96, 120, 158

Spencer Joseph 1

Street Sweeping 37,

Street Engineers 152,

Wine Law 36

Stone-st. Widened 1874

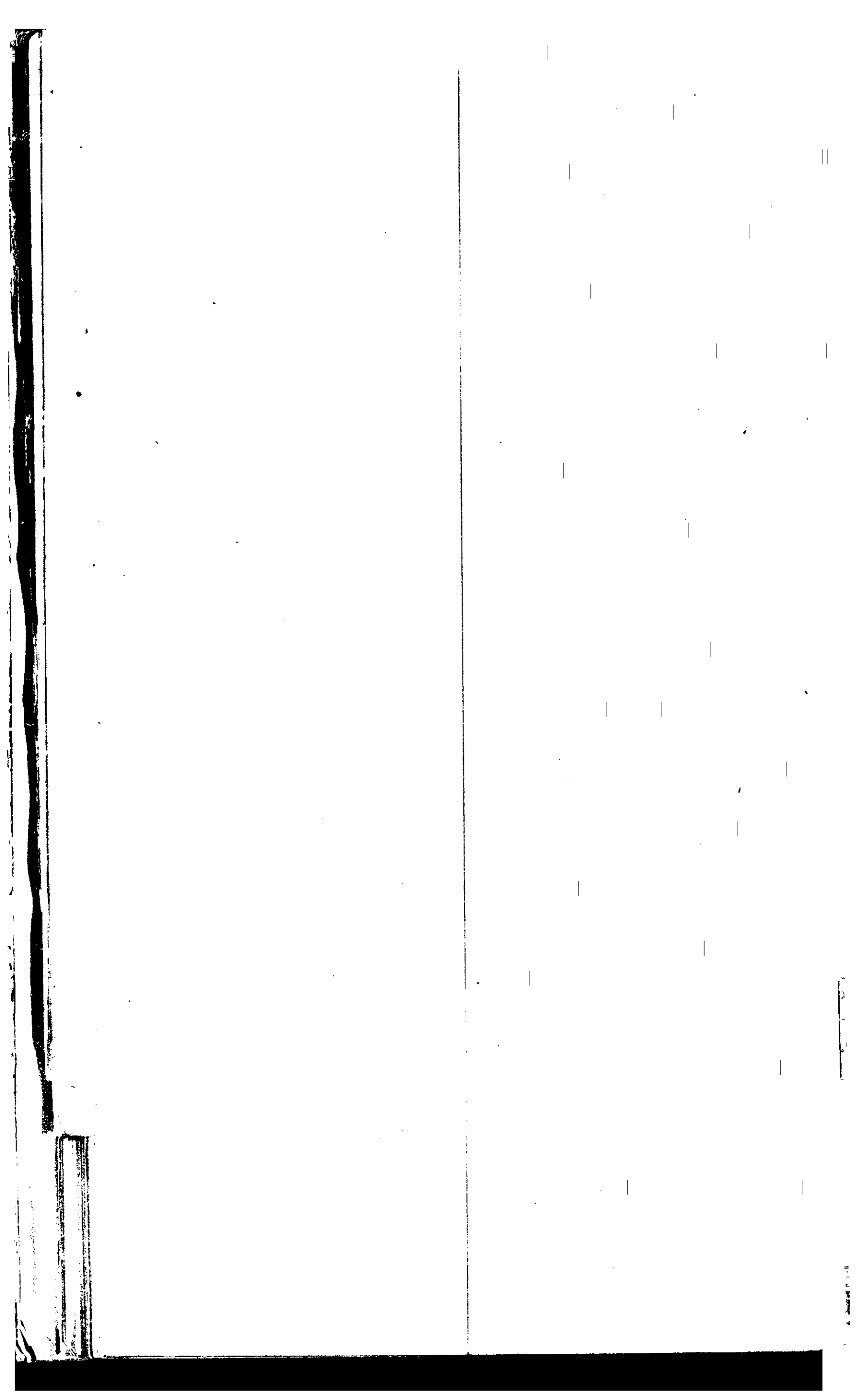
Sidewalk to be paved 74'5'6.

gs

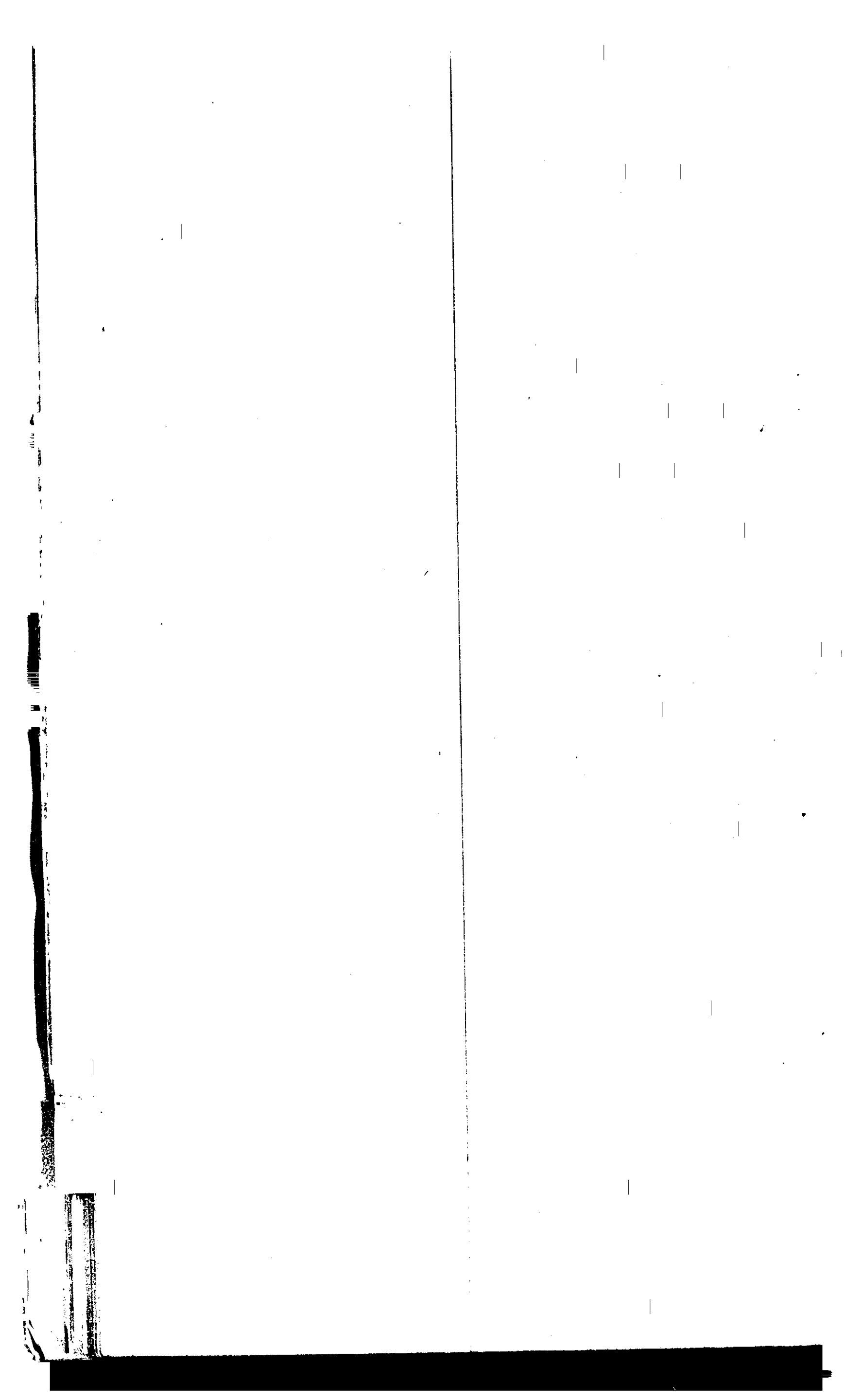


Theatre 9, 17, 18, 88, (licensed 12), 151,  
151,

98



gs



gs

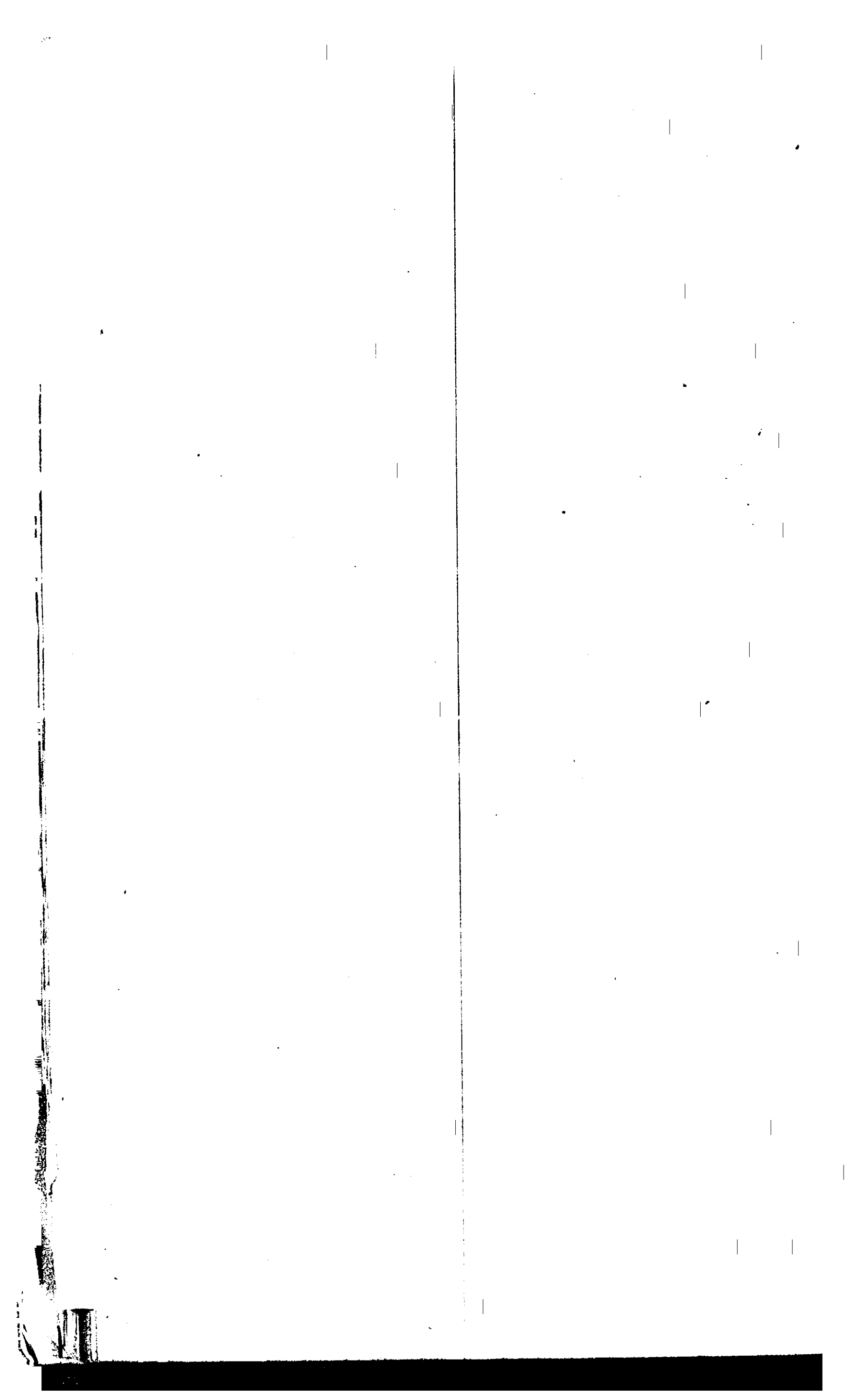
Nests visited 14,

Watchmen 18, (7, 101, 237)

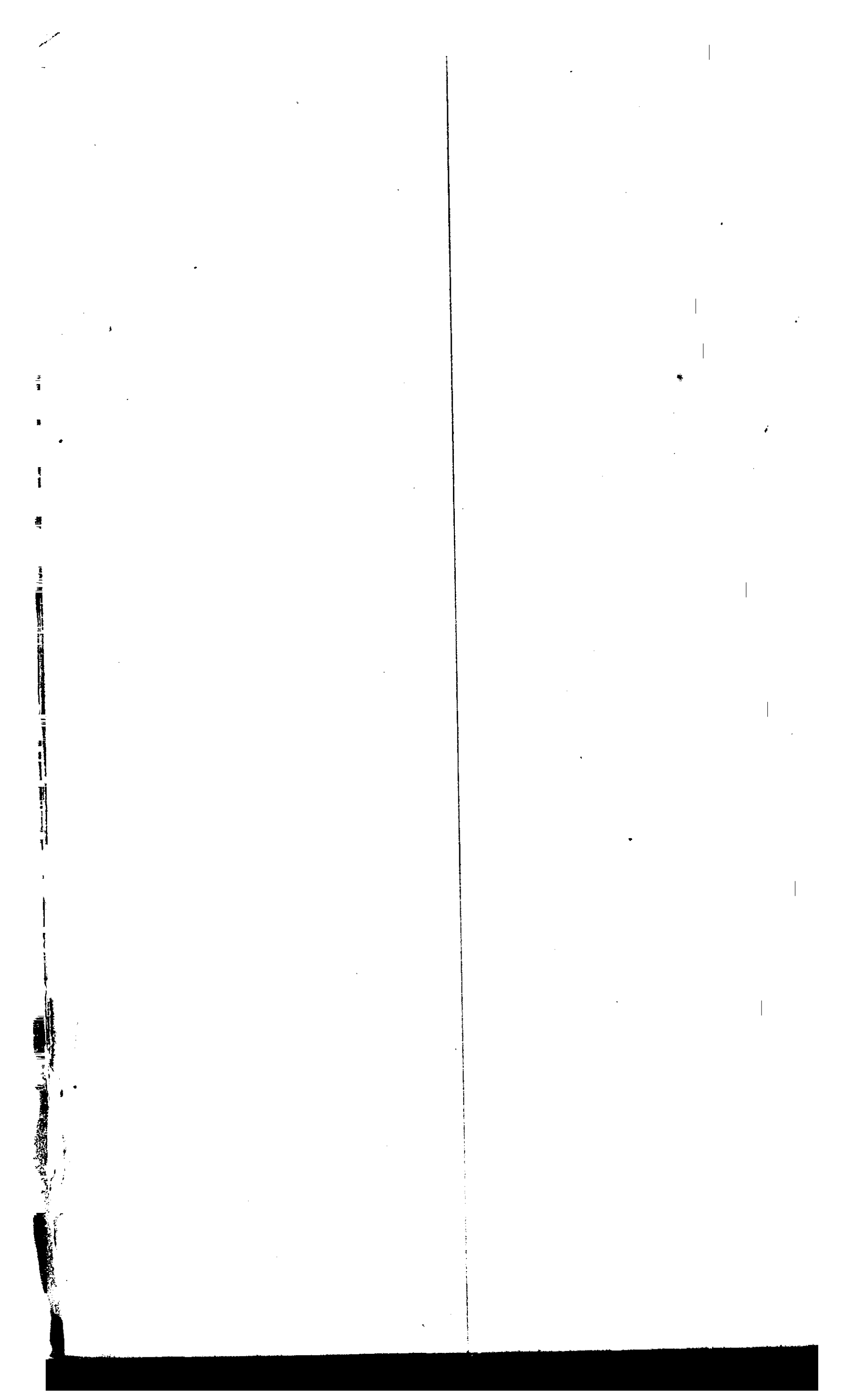
Nest No 31,

gs





gs



gs



Mo.

Nov.

Dec.

May. 21. 22. 23. 24. 25. 26. 27. 28. 29. 30.

September. 27. 28. 29. 30.

June 1. 2. 3. 4. 5. 6. 7. 8. 9. 10.

11. 12. 13. 14. 15. 16. 17. 18. 19. 20.

21. 22. 23. 24. 25. 26. 27. 28. 29. 30.

July 1. 2. 3. 4. 5. 6. 7. 8. 9. 10.

11. 12. 13. 14. 15. 16. 17. 18. 19. 20.

21. 22. 23. 24. 25. 26. 27. 28. 29. 30.

August 1. 2. 3. 4. 5. 6. 7. 8. 9. 10.

11. 12. 13. 14. 15. 16. 17. 18. 19. 20.

21. 22. 23. 24. 25. 26. 27. 28. 29. 30.

September 1. 2. 3. 4. 5. 6. 7. 8. 9. 10.

11. 12. 13. 14. 15. 16. 17. 18. 19. 20.

21. 22. 23. 24. 25. 26. 27. 28. 29. 30.

October 1. 2. 3. 4. 5. 6. 7. 8. 9. 10.

11. 12. 13. 14. 15. 16. 17. 18. 19. 20.

21. 22. 23. 24. 25. 26. 27. 28. 29. 30.

November 1. 2. 3. 4. 5. 6. 7. 8. 9. 10.

11. 12. 13. 14. 15. 16. 17. 18. 19. 20.

21. 22. 23. 24. 25. 26. 27. 28. 29. 30.

December 1. 2. 3. 4. 5. 6. 7. 8. 9. 10.

11. 12. 13. 14. 15. 16. 17. 18. 19. 20.

21. 22. 23. 24. 25. 26. 27. 28. 29. 30.

January 1. 2. 3. 4. 5. 6. 7. 8. 9. 10.

11. 12. 13. 14. 15. 16. 17. 18. 19. 20.

21. 22. 23. 24. 25. 26. 27. 28. 29. 30.

February 1. 2. 3. 4. 5. 6. 7. 8. 9. 10.

11. 12. 13. 14. 15. 16. 17. 18. 19. 20.

21. 22. 23. 24. 25. 26. 27. 28. 29. 30.

March 1. 2. 3. 4. 5. 6. 7. 8. 9. 10.

11. 12. 13. 14. 15. 16. 17. 18. 19. 20.

21. 22. 23. 24. 25. 26. 27. 28. 29. 30.

April 1. 2. 3. 4. 5. 6. 7. 8. 9. 10.

11. 12. 13. 14. 15. 16. 17. 18. 19. 20.

21. 22. 23. 24. 25. 26. 27. 28. 29. 30.

May 1. 2. 3. 4. 5. 6. 7. 8. 9. 10.

11. 12. 13. 14. 15. 16. 17. 18. 19. 20.

21. 22. 23. 24. 25. 26. 27. 28. 29. 30.

Q. 100, 108, 111, 114, 118, 120

122, 125, 130, 132, 134, 137, 140

141, 144, 147, 152, 155, 158, 160

165, 168, 170, 171, 173, 176, 179

180, 183, 187

gs

③

*Na.*

*No*

*No*

*Bellinger 54.55.*

*Predgr. Andrews St. 619*

Pa

Nov

Ref

and of health. 42. 52. 157. 167. 173

St. James. 107. 427. 476. 492

Stony. 367.

in th. 374. 376. 399. 426

rudans. 572

Buffalo St. River bridge. 3. 272. 280. 442. 505. 577. 578

Buffalo St. 55. 139. 149. 195. 209. 249

270. 282. 283. 287. 295. 296. 306. 308. 312

Burial lots. 104. 303. 394.

Buffalo & Sophie Ch. Comm. 124

Buffalo St. 314. 320. 321. 323. 326. 360

346. 368. 379. 380. 386. 392. 395. 396. 400

406. 411. 415. 425. 449. 450. 458. 465

472. 493. 502. 504. 520. 554

Buffalo St. Culvert. 307. 317

Buffalo Canal bridge wall. 362

Burial ground block. 453

gs



⑤

Ci

Carroll St. 12, 14, 19

Caledonia St. 49, 74, 76

Charter. 14, 57, 111

Caledonia Square. 202

Canthara Ridge. 227, 236

Canal St. Sewer. 357, 359, 400

Canal & Lewis St. Sewer. (cont.) 447

Chatham St. 367

County School lot. 522

Co.

Clerk of Mayors Court. 27

Chestnut & Main St. Cor. 11, 406

Cemetery Stock. 597

Ci

City Clerk. 12, 5, 24, 1

Circus. 11, 59, 144, 176, 184, 200

City Charter. 14

Clerk of Mayors Court. 27

City property. 64

City Officers. 45, 49, 152, 161, 175, 357

Child St. 113

Clinton St. 124, 209, 219, 273, 283

307, 373, 377, 405, 494, 504, 512

609

City Officers. 364, 368, 470, 484, 493

City notes. 524, 532, 535, 555

579, 577, 587

Co

Cu

Cy

6

... Capital ... 2, 13, 16, 58

A N. River bridge. 3

... Seal. 3

... 62. 102

Lectures, 58, 364

... of ... 16, 129.

... 184, 208, 209, 215, 265, 271 } 403, 406, 491, 484, 449, 458, 525

... 288, 292, 294, 307, 335, 379, 385, 397 } 527, 038, 026, 512, 621

... 256.

... of ... 307, 322

... 317

... fund, 340.

... 474, 478

... 606.

gs

①

Ja

Se

Di

Driftwood. 53. 56. 377.

Do

Dec

Dec

Dec 11.

gs

9

Ca

Elm street. 74. 155.

Exchange St. 134. 140. 203. 208. 210. 260 474. 476. 485

292. 294. 307. 335. 353. 308. 322. 366

Eastern Highway Dist. 191. 192.

do

Exchange St. Newark. 422.

Co

Election 73. 162. 243. 257. 350. 420

E

Em Canal 91. 92. 102. 370. 472.

Elizabeth St. 209. 214

*E*

*Eu*

*Ey.*

10

*Et. N. 494*

gs

Fr

Franklin St. 367, 388, 398, 409, 528.

Franklin Square. 401, 546, 587, 598.

Fr

Fr

Fr. Boarders. 4, 24, 152, 16

455, 456, 495, 570, 580, 585, 62

Fr. St. 182, 225, 229

Fr. Dep. 9, 15, 16, 17, 20, 24, 3

39, 42, 48, 50, 53, 56, 118, 166

338, 358, 444, 457, 520

Fr. House, 8, 18, 60

Fr. sim. dateb? 12, 38, 44, 62

532, 548, 573 184, 299, 411, 419, 460, 464, 468,

Fr. Co. 1. 532, 560, 574, 575, 579, 596

612,

Fr. Co. 2. 456, 468, 490, 505, 536, 574

578, 69

Fr. Co. 3. 389, 401, 444, 457, 469, 507

554, 588, 608.

Fr. Co. 4. 450, 476, 495, 507, 510, 512

578, 612, 619

Fr. Co. 5. 408, 428, 437, 466, 472, 489

578, 579, 582, 587, 616

Fr. Co. 6. 507, 522, 536, 542, 560

574, 575, 608, 608.

Fr. Co. No. 1. 81, 86, 87, 147, 184

220, 276, 294, 309, 332, 402, 456, 4

Fr. Co. No. 2. 67, 92, 106, 112, 149

237, 260, 357, 377, 415, 428, 449

Fr. Co. No. 3. 56, 58, 64, 82, 87

99, 114, 124, 222, 257, 272, 390, 33

Fr. Co. No. 4. 30, 36, 67, 92, 106

137, 225, 260, 270, 329, 352, 361, 3

Fr. Co. No. 5. 27, 65, 92, 99, 114

216, 210, 220, 312.

Fr. Co. No. 6. 27, 58, 81, 87, 9

121, 130, 151, 222, 244, 275, 307, 3

Fr. Co. omitted 70.

Fr. Hugh St. 372, 377, 379, 477

556, 563, 566, 589, 598, 609

621.

Fr. Protection Co. 575, 581

*Fr*

*Fu*

*Hy*

16. 56. 390.  
 2.  
 3. 41. 398. 494. 577. 587. 537.  
 66. 7. 609.  
 2. 11.  
 68.  
 18.  
 2. 19.  
 2. 19.  
 644.  
 879.  
 94. 337.  
 106.  
 61. 38.  
 9. 116.  
 87. 94.  
 97. 37.  
 1. 47.  
 609.  
 581.

gs



Ca

Gi

Genesee St. 272

Genesee Riv. West Bank, 372.

Genesee Riv. West. 379.

Gi

Genesee St. 609, 612.

Co

See

Copy

as license. 19. 20. 25. 28. 34. 35

Gen Smith. 47

39. 41. 156. 165

line N. 368.

ve Stat. 526.

gs

Lea

Machum. 12. 317.

Hay Wiggins. 85. 394.

Hall's furnace. 164.

Lee

Herrington Pond. 50. 56.

Honey St. 137. 326

Lee

Highway tax. 12. 70.

High St. 366. 374. 390. 457.

467.

Heo

Heu

Hey

Hydraulics, 371.

Book of Ladder Co. 1. 33. 56. 58. 63.

91. 92. 97. 102. 107. 112. 117. 190. 198. 200

Book of Ladder Co. 2. 71. 102. 104. 114. 115.

216. 222. 225. 259. 442. 446. 457. 499

560. 575. 579. 605. 606. 608. 612

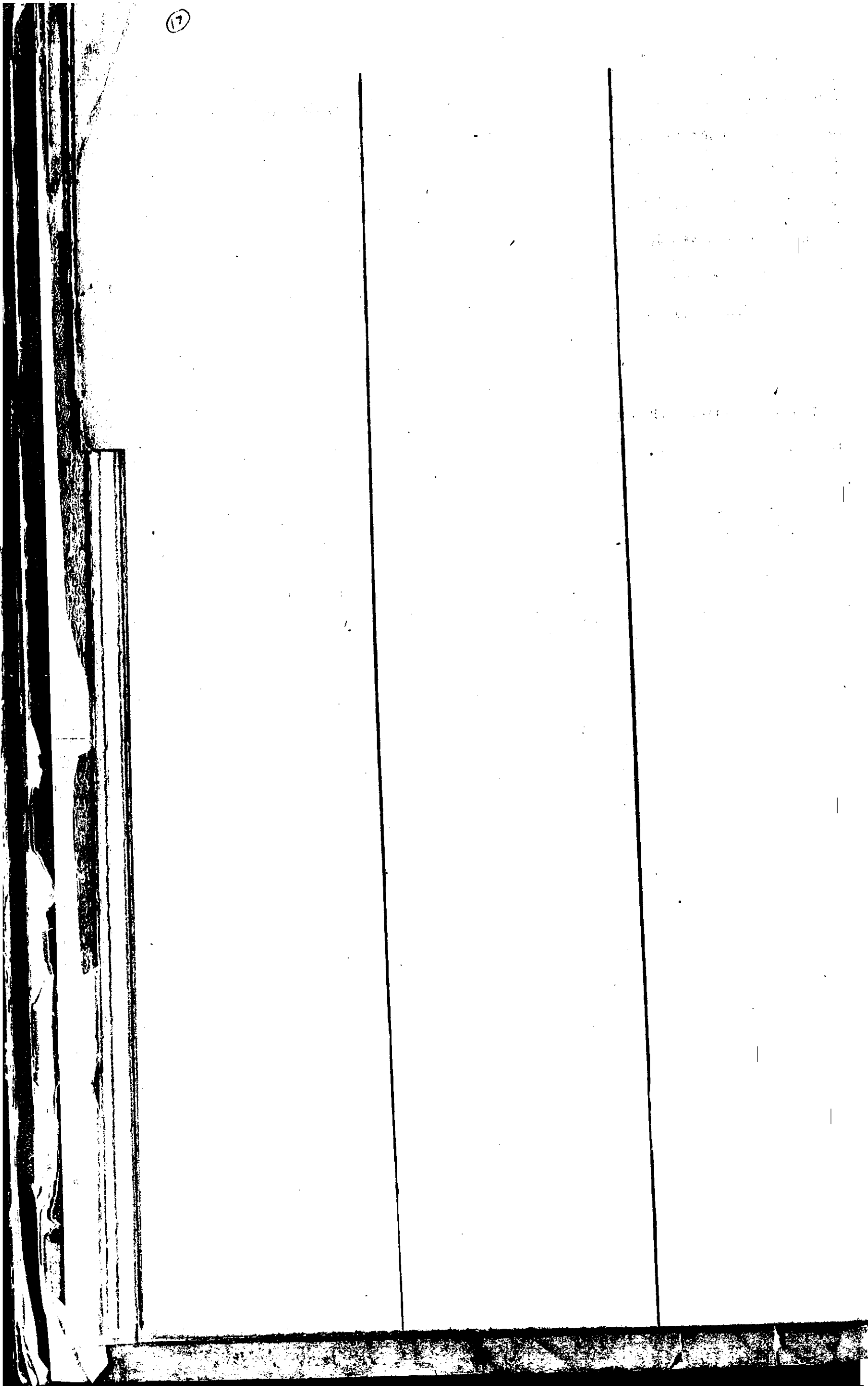
Book of Ladder Co. No 1. 282. 296. 297. 325

457. 442. 455. 471. 475. 534. 535

Co. No. 1. 273. 274. 280. 282. 295. 322

442. 462. 395.

gs



gs

Ⓐ

*So.*

*Jackson St. 137.554*

*Lay St. 616*

*So*

*So*

*S.*

*Anderson's Square. 107.*

*See*

*Austin. 4. 14. 20. 66. 99. 322.*

*349. 470*

*Ly.*

*Ann St. 368.*

*Anderson St. 496*

gs



2

*Clas*

*He*

*Ho*

No

Qu

Key

gs

La

La Fayette. 21. 23. 27. 32.

Laurel + Watch Dist. 26. 157. 160. 164.

Laurel H. 105

Le

Le

Liberty St. 398.

Lo

Lee

Janate 153

Lyf

Spall head cross walk. 395.

gs

*Md.*

Mayor. 1. 2. 93. 95. 160. 174. 176. 224. 227. 450.  
480.

Market St.

Market. 15. 16. 22. 56. 59. 59. 65. 76. 114. 337  
338. 340. 347. 365. 389. 390. 398. 402. 504.

Pharm St. 77. 82. 82. 116. 146. 242. 318. 340. 361.  
371. 378. 386. 391. 425. 473. 493. 494. 567.

Main St. 124. 138. 158. 201. 210. 245. 272. 292.  
300. 390. 392. 415. 418. 457. 460. 468. 499.  
570. 571. 584. 588. 602.

Matthews. Genl. 125

Phil Lot. No. 1. 227. 279. 363. 408. 411. 432

Map of city. 276. 367.

Market St. 345. 393. 395. 408. 416. 407. 416.  
445. 452. 464. 463. 465. 473. 493. 504. 517. 530

Market Lot. 00. 363

Market Stock <sup>349</sup>/<sub>340</sub>

*Me*

Mechanic Chem. 226. 269. 279. 579

Mechanic St. 398.

Mendham & Deal. 372.

*Mi*

*Vol.*

*Me*

*Way*

Clinton St. 188, 188, 228, 272.

Manford St. 240, 379.

St. 188, 189, 193, 209, 272, 287

5, 307, 309, 322, 335, 337, 339, 345, 373

Argonny Alley, 236.

St. 390, 397, 439, 469

4, 456.

St. 467, 462, 462.

gs

(27)

*Apr*

*Apr*

*Apr*

*New Stud. 502*

*No.*

*Ans.*

*Ref.*

*No. 13 & 206. 209. 290*

*Miscellaneous. 19. 36. 330. 392. 464.*

gs



29

*Oa*

*Os*

*Oi*

*Orbitarius . 178 . 324*

Os

Ou

Oy

3

gs

*Pu*

Barsons. M. 16.

Platt N. 139, 354, 386, 417, 457, 465, 467,

478, 496, 501, 570,

Barber N. 385.

Platt Am. 576.

*Sc*

Petition withdr. 39

Pennsylvania N. 584.

*Pu*

Printing, 11. 34. 40. (Minutes)

Pain M. 56.

*R*

*Pu*

*Py*

Pr. 10. 13. 14. 18. 23. 24. 262.  
Police Justice app<sup>t</sup>. 249  
Patent license. 33.  
Pound. 39. 252.

gs

W  
E  
B  
V  
7

*La*

*De*

*Di*

*2*

*See*

*24*

gs

Pa

Re

Rains. 2, 19.  
Rains. 254.

Tei

Rain Alley, 108, 168, 182, 192.  
Rain street, 164, 168.  
Rain Alley, 208, 214, 216, 225

Rain well, 578.

*R*

*Arch. Districts. 14. 53.*  
*Recherches. 27.*  
*Local Lists. 44.*

*Reu*

*Recher. 2. 5. 14.*

*Rep.*

gs

B



La

Standing Committee. 57. 357.  
 State Street. 107. 119. 122. 139. 149. 189. 200  
 205. 212. 216. 222. 225. 230. 238. 246. 266. 303.  
 Man. F. 127. 131. 136. 140. 159. 195. 246. 388.  
 458. 467. 530.  
 State Street, 318. 363. 369. 382. 392. 411. 451.  
 452. 524. 577. 592

Se

Septon. 15. 16.  
 Sealer. 12. 14. 78. 103  
 Street Inspectors. 14. 17. 18  
 Seal. for City. 22. 27. 33.  
 Seal of Mayor's Court. 29. 30  
 Streets. 31. 60. 65. 66. 191. 216. 377.  
 512. 516. 517.  
 Selye Locom. Engines. 102

Si

Spring St. 110. 117. 122. 156.  
 200. 206. 208. 213. 224. 227  
 237. 249. 319. 397. 452. 493.  
 Sibley St. 212.

Side walks. protection of.

Ab

Su

Sy

School Districts. 4. 21. 44. 46. 102.

Superintendent. 12

124. 229. 237. 253. 282. 360. 408. 440. 460.

Surveyors. 50

School Inspectors. 22. 24.

Superintendents. 143. 144.

St Paul St. 52. 54. 57. 64. 63. 64.

67. 78. 81. 84. 86. 87. 92. 94. 104. 111. 164.

St. Sophia St. 62. 74. 76. 375. 449.

School Monies. 110. 721. 297. 322. 457.

St. Paul St. 141. 179. 210. 452.

3. 57. 571. 574. 584.

St. Paul St. 188. 195. 203. 400.

St. 374. 387. 397. 411. 449. 3. 341.

School Alley. 422.

School Districts. 464. 479. 485.

gs

3

*Pa*

Taxen licent. 22. 24. 25. 28. 29. 32. 33.

37. 39. 41. 42. 44. 126. 157. 158. 495.

Taxer. 85. 207.

Tax Sales. 563

*So*

Treasure. 4. 7. 19. 496.

Worth. 59. 330. 473

*To*

ma.

So

W. H. 197. 401. 428. 457. 473. 478.  
622 555. 565. 621. 600,

wanda R. Read. 408. 410

W. Hart Map 454. 508

Sw

Sy).

gs

*Ma*

*Me*

*Mi*

*Uman N. 500.*

No.

No.

No.

92

gs

10

*in*

*to*

*to*

*Wlaye Office. 5*

No  
Thought Alley. 386.

bu

by.

gs



*Ma*

North. 37. 41. 44. 45. 69

North St. 87. 89. 189. 194. 578.

Washington Square. 202. 245. 290. 334.

507.

Washington St 228. 288. 256. 582.

5th 574. 580. 560.

Franklin St. 265. 318. 340. 412.

*Me*

Locals. 50

North Highway Dist. 167. 191. 192

West Alley, 358. 498

*Mi*

Mississippi. 52. 76. 150.

*Ho*

Wood marks 20, 45, 55, 69, 615

Wood buildy 54, 57, 72, 74, 110

497

Ho No St. 168, 173, 182, 192, 196

214, 216, 224, 225, 231, 237, 415, 449

Wood marks 606

*Ho*

*Ho*

gs

*Ga*

*Ga*

*Ga*

*Yes*

*Yes*

*Yes*

52

gs