

NO.	REVISION	BY	DATE
1			
2			
3			
4			
5			
6			

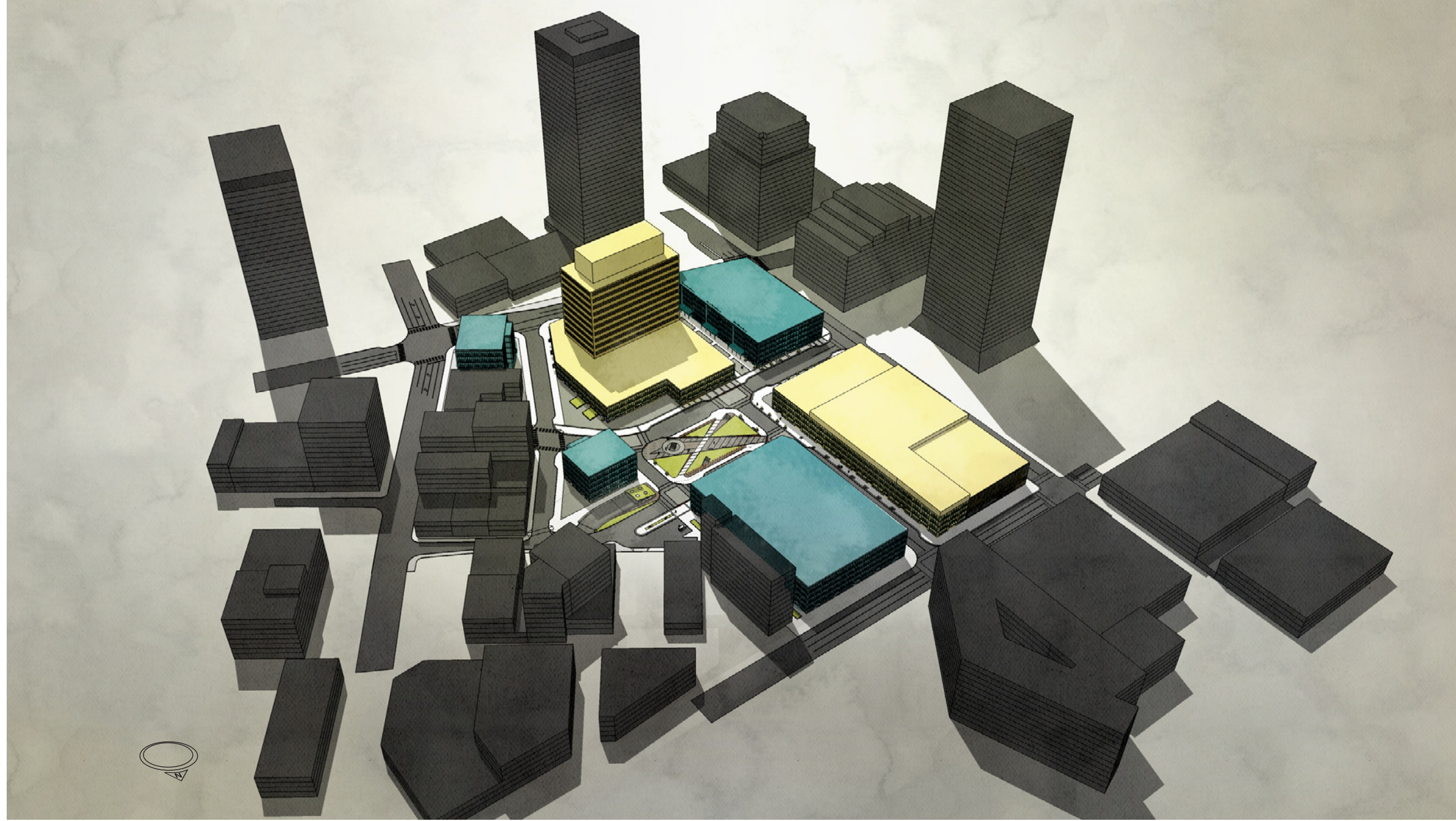

**TROWBRIDGE & WOLF**  
 LANDSCAPE ARCHITECTS LLP

PROJECT/CLIENT  
 MIDTOWN REDEVELOPMENT  
 PROJECT  
 (FORMER MIDTOWN PLAZA  
 SITE)  
 CITY OF ROCHESTER  
 DEPARTMENT OF  
 ENVIRONMENTAL SERVICES

DRAWING TITLE  
**GRAPHIC ILLUSTRATION 1  
 MIDTOWN BASE PLAN**  
 ISSUED FOR  
**DRAFT DAD**  
 DESIGNED BY: \_\_\_\_\_  
 DRAWN BY: \_\_\_\_\_  
 DATE: DECEMBER 22, 2010  
 REVIEWED BY: \_\_\_\_\_

PROJECT/DRAWING NUMBER  
 210301  
**L-01**

It is a violation of the New York Education Law Article 145, Sec. 2709, for any architect, engineer, or land surveyor to practice under the direction of a licensed architect, professional engineer, or land surveyor who is not currently licensed in the State of New York, or to practice under the direction of an architect, engineer, or land surveyor who is not currently licensed in the State of New York, or to practice under the direction of an architect, engineer, or land surveyor who is not currently licensed in the State of New York, or to practice under the direction of an architect, engineer, or land surveyor who is not currently licensed in the State of New York.



DRAWING TITLE

GRAPHIC ILLUSTRATION 2  
BIRD'S EYE VIEW

ISSUED FOR

DRAFT DAD

DESIGNED BY:

DRAWN BY:

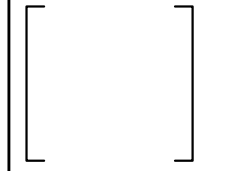
DATE: DECEMBER 22, 2010

REVIEWED BY:

PROJECT/CLIENT

MIDTOWN REDEVELOPMENT  
PROJECT  
(FORMER MIDTOWN PLAZA  
SITE)

CITY OF ROCHESTER  
DEPARTMENT OF  
ENVIRONMENTAL SERVICES

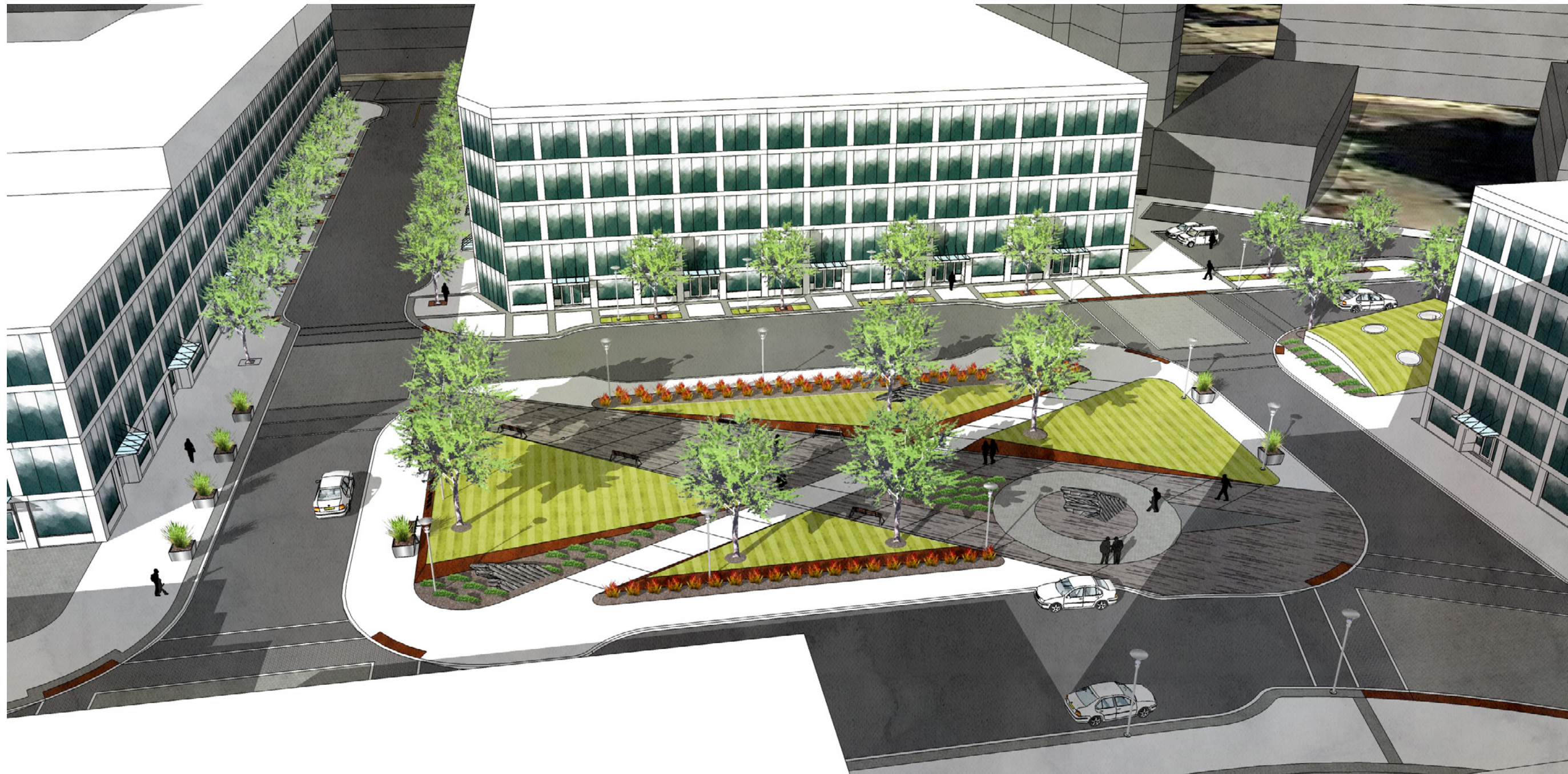


NO. REVISION BY DATE

NO.	REVISION	BY	DATE
1			
2			
3			
4			
5			
6			

It is the policy of the City of Rochester, New York, to encourage the development of high quality, innovative, and sustainable architecture. The City of Rochester, New York, is committed to the development of a vibrant, diverse, and inclusive community. The City of Rochester, New York, is committed to the development of a vibrant, diverse, and inclusive community. The City of Rochester, New York, is committed to the development of a vibrant, diverse, and inclusive community.

PROJECT/DRAWING NUMBER  
210301  
L-02



NO.	REVISION	BY	DATE
1			
2			
3			
4			
5			
6			


**TROWBRIDGE & WOLF**  
 LANDSCAPE ARCHITECTS LLP

PROJECT/CLIENT  
 MIDTOWN REDEVELOPMENT  
 PROJECT  
 (FORMER MIDTOWN PLAZA  
 SITE)  
  
 CITY OF ROCHESTER  
 DEPARTMENT OF  
 ENVIRONMENTAL SERVICES

DRAWING TITLE  
**GRAPHIC ILLUSTRATION 3  
 VIEW FROM  
 MIDTOWN TOWER**  
 ISSUED FOR  
**DRAFT DAD**  
 DESIGNED BY: \_\_\_\_\_  
 DRAWN BY: \_\_\_\_\_  
 DATE: DECEMBER 22, 2010  
 REVIEWED BY: \_\_\_\_\_

PROJECT/DRAWING NUMBER  
 [ 210301 ]  
 [ L-03 ]

It is the policy of the State of New York, Education Law §1405, Sec. 2709, for any architect, engineer, or landscape architect to be licensed under the direction of a licensed architect, professional engineer, or landscape architect. This drawing is prepared by a student of a licensed architect, professional engineer, or landscape architect, and is not to be used for any other purpose without the written consent of the architect, engineer, or landscape architect. The student's name and title shall appear on this drawing, and the student shall be held responsible for the accuracy of the information and data furnished, and for the proper description of the information.



NO.	REVISION	BY	DATE
1			
2			
3			
4			
5			
6			


**TROWBRIDGE & WOLF**  
 LANDSCAPE ARCHITECTS LLP

PROJECT/CLIENT  
 MIDTOWN REDEVELOPMENT  
 PROJECT  
 (FORMER MIDTOWN PLAZA  
 SITE)  
 CITY OF ROCHESTER  
 DEPARTMENT OF  
 ENVIRONMENTAL SERVICES

DRAWING TITLE  
**GRAPHIC ILLUSTRATION 4**  
**ELM STREET**  
**LOOKING NORTHWEST**  
 ISSUED FOR  
**DRAFT DAD**  
 DESIGNED BY: \_\_\_\_\_  
 DRAWN BY: \_\_\_\_\_  
 DATE: DECEMBER 22, 2010  
 REVIEWED BY: \_\_\_\_\_

PROJECT/DRAWING NUMBER  
 [ 210301 ]  
 [ L-04 ]

It is a violation of the New York Education Law Article 145, Sec. 2709, for any architect, engineer, or land surveyor to practice their profession, or to use their name or the name of their firm, in connection with any project, unless acting under the direction of a licensed architect, professional engineer, or land surveyor. The seal and notations of any architect, professional engineer, or land surveyor shall only be used on drawings, specifications, or reports prepared by the architect, engineer, or land surveyor and shall be a true and correct representation of the work done by the architect, engineer, or land surveyor.



NO.	REVISION	BY	DATE
1			
2			
3			
4			
5			
6			


**TROWBRIDGE & WOLF**  
 LANDSCAPE ARCHITECTS LLP

PROJECT/CLIENT  
 MIDTOWN REDEVELOPMENT  
 PROJECT  
 (FORMER MIDTOWN PLAZA  
 SITE)  
 CITY OF ROCHESTER  
 DEPARTMENT OF  
 ENVIRONMENTAL SERVICES

DRAWING TITLE  
**GRAPHIC ILLUSTRATION 5  
 HISTORIC ELM  
 LOOKING SOUTH**  
 ISSUED FOR  
**DRAFT DAD**  
 DESIGNED BY: \_\_\_\_\_  
 DRAWN BY: \_\_\_\_\_  
 DATE: DECEMBER 22, 2010    REVIEWED BY: \_\_\_\_\_

PROJECT/DRAWING NUMBER  
 [ 210301 ]  
 [ L-05 ]

It is a violation of the New York Education Law Article 145, Sec. 2709, for any architect, engineer, or landscape architect to practice their profession, or to use their name or the name of their firm, or to hold themselves out as being an architect, engineer, or landscape architect, or to use their seal and notations, unless they are duly licensed and their name and firm name are entered on the official list of architects, engineers, or landscape architects, and their seal and notations, unless they are duly licensed and their name and firm name are entered on the official list of architects, engineers, or landscape architects.



It is a violation of the New York Education Law §1405.145, Sec. 2709, for any architect, professional engineer, or landscape architect to prepare, seal, or issue any drawings, specifications, or reports, or to be responsible therefor, unless acting under the direction of a licensed architect, professional engineer, or landscape architect. The seal and signature of the architect, professional engineer, or landscape architect shall refer to the item from their seal and notations, "sealed by their seal and signature" followed by their signature and date of such notation, and a specific description of the preparation.

NO.	REVISION	BY	DATE
1			
2			
3			
4			
5			
6			

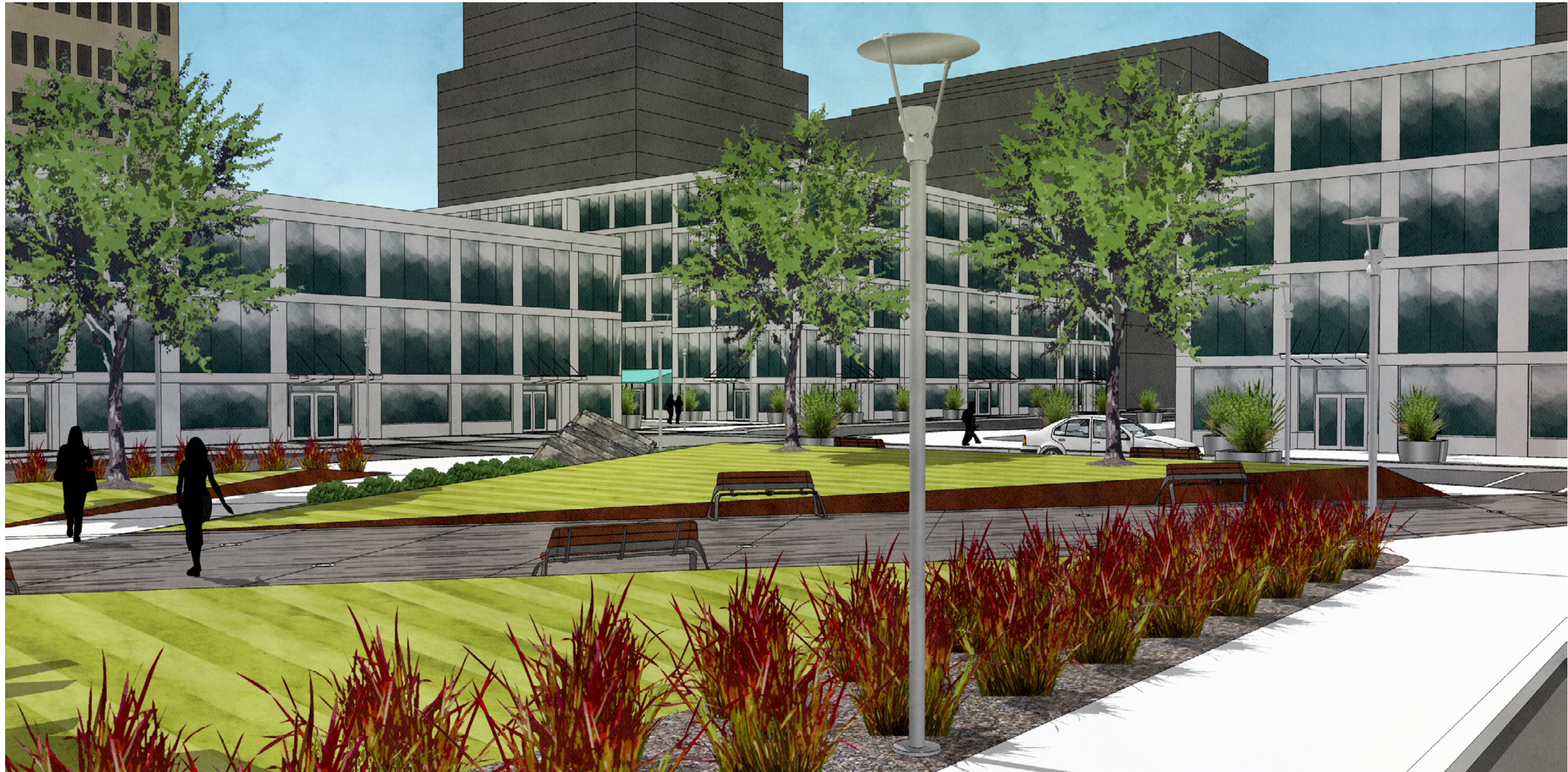


**TROWBRIDGE & WOLF**  
LANDSCAPE ARCHITECTS LLP

PROJECT/CLIENT  
 MIDTOWN REDEVELOPMENT PROJECT  
 (FORMER MIDTOWN PLAZA SITE)  
 CITY OF ROCHESTER  
 DEPARTMENT OF ENVIRONMENTAL SERVICES

DRAWING TITLE  
**GRAPHIC ILLUSTRATION 6**  
**CORTLAND STREET**  
**LOOKING SOUTHEAST**  
 ISSUED FOR  
**DRAFT DAD**  
 DESIGNED BY: \_\_\_\_\_  
 DRAWN BY: \_\_\_\_\_  
 DATE: DECEMBER 22, 2010  
 REVIEWED BY: \_\_\_\_\_

PROJECT/DRAWING NUMBER  
 [ 210301 ]  
 [ L-06 ]



NO.	REVISION	BY	DATE
1			
2			
3			
4			
5			
6			

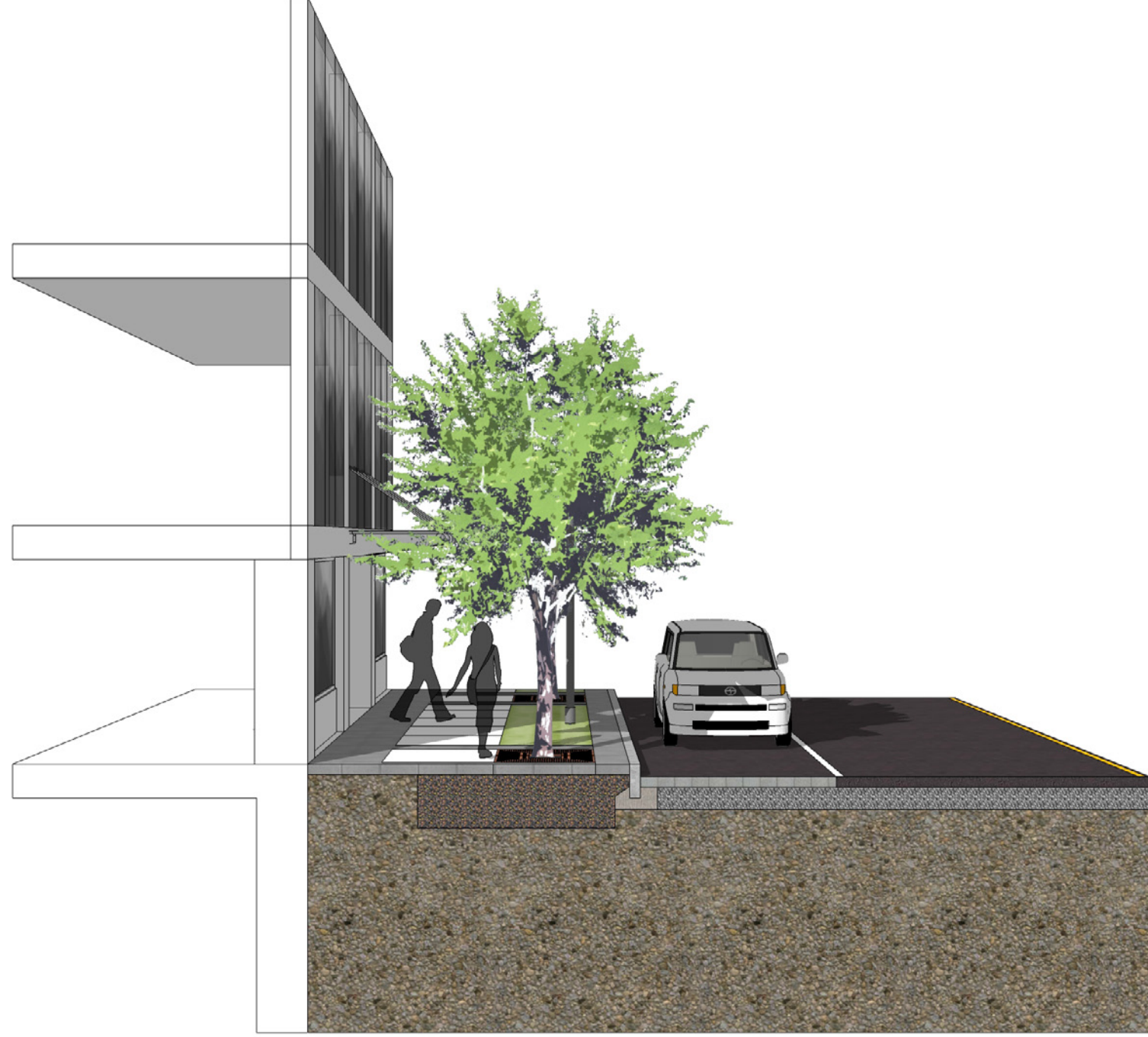
Trowbridge & Wolf  
 LANDSCAPE ARCHITECTS LLP

PROJECT/CLIENT  
 MIDTOWN REDEVELOPMENT  
 PROJECT  
 (FORMER MIDTOWN PLAZA  
 SITE)  
  
 CITY OF ROCHESTER  
 DEPARTMENT OF  
 ENVIRONMENTAL SERVICES

DRAWING TITLE  
 GRAPHIC ILLUSTRATION 7  
 EUCLID STREET  
 LOOKING SOUTHWEST  
  
 ISSUED FOR  
 DRAFT DAD  
 DESIGNED BY:  
 DRAWN BY:  
 DATE: DECEMBER 22, 2010  
 REVIEWED BY:

PROJECT/DRAWING NUMBER  
 210301  
 L-07

It is the policy of the State of New York, Education Law §1405, §1405a, §1405b, §1405c, §1405d, §1405e, §1405f, §1405g, §1405h, §1405i, §1405j, §1405k, §1405l, §1405m, §1405n, §1405o, §1405p, §1405q, §1405r, §1405s, §1405t, §1405u, §1405v, §1405w, §1405x, §1405y, §1405z, §1405aa, §1405ab, §1405ac, §1405ad, §1405ae, §1405af, §1405ag, §1405ah, §1405ai, §1405aj, §1405ak, §1405al, §1405am, §1405an, §1405ao, §1405ap, §1405aq, §1405ar, §1405as, §1405at, §1405au, §1405av, §1405aw, §1405ax, §1405ay, §1405az, §1405ba, §1405bb, §1405bc, §1405bd, §1405be, §1405bf, §1405bg, §1405bh, §1405bi, §1405bj, §1405bk, §1405bl, §1405bm, §1405bn, §1405bo, §1405bp, §1405bq, §1405br, §1405bs, §1405bt, §1405bu, §1405bv, §1405bw, §1405bx, §1405by, §1405bz, §1405ca, §1405cb, §1405cc, §1405cd, §1405ce, §1405cf, §1405cg, §1405ch, §1405ci, §1405cj, §1405ck, §1405cl, §1405cm, §1405cn, §1405co, §1405cp, §1405cq, §1405cr, §1405cs, §1405ct, §1405cu, §1405cv, §1405cw, §1405cx, §1405cy, §1405cz, §1405da, §1405db, §1405dc, §1405dd, §1405de, §1405df, §1405dg, §1405dh, §1405di, §1405dj, §1405dk, §1405dl, §1405dm, §1405dn, §1405do, §1405dp, §1405dq, §1405dr, §1405ds, §1405dt, §1405du, §1405dv, §1405dw, §1405dx, §1405dy, §1405dz, §1405ea, §1405eb, §1405ec, §1405ed, §1405ee, §1405ef, §1405eg, §1405eh, §1405ei, §1405ej, §1405ek, §1405el, §1405em, §1405en, §1405eo, §1405ep, §1405eq, §1405er, §1405es, §1405et, §1405eu, §1405ev, §1405ew, §1405ex, §1405ey, §1405ez, §1405fa, §1405fb, §1405fc, §1405fd, §1405fe, §1405ff, §1405fg, §1405fh, §1405fi, §1405fj, §1405fk, §1405fl, §1405fm, §1405fn, §1405fo, §1405fp, §1405fq, §1405fr, §1405fs, §1405ft, §1405fu, §1405fv, §1405fw, §1405fx, §1405fy, §1405fz, §1405ga, §1405gb, §1405gc, §1405gd, §1405ge, §1405gf, §1405gg, §1405gh, §1405gi, §1405gj, §1405gk, §1405gl, §1405gm, §1405gn, §1405go, §1405gp, §1405gq, §1405gr, §1405gs, §1405gt, §1405gu, §1405gv, §1405gw, §1405gx, §1405gy, §1405gz, §1405ha, §1405hb, §1405hc, §1405hd, §1405he, §1405hf, §1405hg, §1405hh, §1405hi, §1405hj, §1405hk, §1405hl, §1405hm, §1405hn, §1405ho, §1405hp, §1405hq, §1405hr, §1405hs, §1405ht, §1405hu, §1405hv, §1405hw, §1405hx, §1405hy, §1405hz, §1405ia, §1405ib, §1405ic, §1405id, §1405ie, §1405if, §1405ig, §1405ih, §1405ii, §1405ij, §1405ik, §1405il, §1405im, §1405in, §1405io, §1405ip, §1405iq, §1405ir, §1405is, §1405it, §1405iu, §1405iv, §1405iw, §1405ix, §1405iy, §1405iz, §1405ja, §1405jb, §1405jc, §1405jd, §1405je, §1405jf, §1405jg, §1405jh, §1405ji, §1405jj, §1405jk, §1405jl, §1405jm, §1405jn, §1405jo, §1405jp, §1405jq, §1405jr, §1405js, §1405jt, §1405ju, §1405jv, §1405jw, §1405jx, §1405jy, §1405jz, §1405ka, §1405kb, §1405kc, §1405kd, §1405ke, §1405kf, §1405kg, §1405kh, §1405ki, §1405kj, §1405kk, §1405kl, §1405km, §1405kn, §1405ko, §1405kp, §1405kq, §1405kr, §1405ks, §1405kt, §1405ku, §1405kv, §1405kw, §1405kx, §1405ky, §1405kz, §1405la, §1405lb, §1405lc, §1405ld, §1405le, §1405lf, §1405lg, §1405lh, §1405li, §1405lj, §1405lk, §1405ll, §1405lm, §1405ln, §1405lo, §1405lp, §1405lq, §1405lr, §1405ls, §1405lt, §1405lu, §1405lv, §1405lw, §1405lx, §1405ly, §1405lz, §1405ma, §1405mb, §1405mc, §1405md, §1405me, §1405mf, §1405mg, §1405mh, §1405mi, §1405mj, §1405mk, §1405ml, §1405mm, §1405mn, §1405mo, §1405mp, §1405mq, §1405mr, §1405ms, §1405mt, §1405mu, §1405mv, §1405mw, §1405mx, §1405my, §1405mz, §1405na, §1405nb, §1405nc, §1405nd, §1405ne, §1405nf, §1405ng, §1405nh, §1405ni, §1405nj, §1405nk, §1405nl, §1405nm, §1405nn, §1405no, §1405np, §1405nq, §1405nr, §1405ns, §1405nt, §1405nu, §1405nv, §1405nw, §1405nx, §1405ny, §1405nz, §1405oa, §1405ob, §1405oc, §1405od, §1405oe, §1405of, §1405og, §1405oh, §1405oi, §1405oj, §1405ok, §1405ol, §1405om, §1405on, §1405oo, §1405op, §1405oq, §1405or, §1405os, §1405ot, §1405ou, §1405ov, §1405ow, §1405ox, §1405oy, §1405oz, §1405pa, §1405pb, §1405pc, §1405pd, §1405pe, §1405pf, §1405pg, §1405ph, §1405pi, §1405pj, §1405pk, §1405pl, §1405pm, §1405pn, §1405po, §1405pp, §1405pq, §1405pr, §1405ps, §1405pt, §1405pu, §1405pv, §1405pw, §1405px, §1405py, §1405pz, §1405qa, §1405qb, §1405qc, §1405qd, §1405qe, §1405qf, §1405qg, §1405qh, §1405qi, §1405qj, §1405qk, §1405ql, §1405qm, §1405qn, §1405qo, §1405qp, §1405qq, §1405qr, §1405qs, §1405qt, §1405qu, §1405qv, §1405qw, §1405qx, §1405qy, §1405qz, §1405ra, §1405rb, §1405rc, §1405rd, §1405re, §1405rf, §1405rg, §1405rh, §1405ri, §1405rj, §1405rk, §1405rl, §1405rm, §1405rn, §1405ro, §1405rp, §1405rq, §1405rr, §1405rs, §1405rt, §1405ru, §1405rv, §1405rw, §1405rx, §1405ry, §1405rz, §1405sa, §1405sb, §1405sc, §1405sd, §1405se, §1405sf, §1405sg, §1405sh, §1405si, §1405sj, §1405sk, §1405sl, §1405sm, §1405sn, §1405so, §1405sp, §1405sq, §1405sr, §1405ss, §1405st, §1405su, §1405sv, §1405sw, §1405sx, §1405sy, §1405sz, §1405ta, §1405tb, §1405tc, §1405td, §1405te, §1405tf, §1405tg, §1405th, §1405ti, §1405tj, §1405tk, §1405tl, §1405tm, §1405tn, §1405to, §1405tp, §1405tq, §1405tr, §1405ts, §1405tt, §1405tu, §1405tv, §1405tw, §1405tx, §1405ty, §1405tz, §1405ua, §1405ub, §1405uc, §1405ud, §1405ue, §1405uf, §1405ug, §1405uh, §1405ui, §1405uj, §1405uk, §1405ul, §1405um, §1405un, §1405uo, §1405up, §1405uq, §1405ur, §1405us, §1405ut, §1405uu, §1405uv, §1405uw, §1405ux, §1405uy, §1405uz, §1405va, §1405vb, §1405vc, §1405vd, §1405ve, §1405vf, §1405vg, §1405vh, §1405vi, §1405vj, §1405vk, §1405vl, §1405vm, §1405vn, §1405vo, §1405vp, §1405vq, §1405vr, §1405vs, §1405vt, §1405vu, §1405vv, §1405vw, §1405vx, §1405vy, §1405vz, §1405wa, §1405wb, §1405wc, §1405wd, §1405we, §1405wf, §1405wg, §1405wh, §1405wi, §1405wj, §1405wk, §1405wl, §1405wm, §1405wn, §1405wo, §1405wp, §1405wq, §1405wr, §1405ws, §1405wt, §1405wu, §1405wv, §1405ww, §1405wx, §1405wy, §1405wz, §1405xa, §1405xb, §1405xc, §1405xd, §1405xe, §1405xf, §1405xg, §1405xh, §1405xi, §1405xj, §1405xk, §1405xl, §1405xm, §1405xn, §1405xo, §1405xp, §1405xq, §1405xr, §1405xs, §1405xt, §1405xu, §1405xv, §1405xw, §1405xx, §1405xy, §1405xz, §1405ya, §1405yb, §1405yc, §1405yd, §1405ye, §1405yf, §1405yg, §1405yh, §1405yi, §1405yj, §1405yk, §1405yl, §1405ym, §1405yn, §1405yo, §1405yp, §1405yq, §1405yr, §1405ys, §1405yt, §1405yu, §1405yv, §1405yw, §1405yx, §1405yy, §1405yz, §1405za, §1405zb, §1405zc, §1405zd, §1405ze, §1405zf, §1405zg, §1405zh, §1405zi, §1405zj, §1405zk, §1405zl, §1405zm, §1405zn, §1405zo, §1405zp, §1405zq, §1405zr, §1405zs, §1405zt, §1405zu, §1405zv, §1405zw, §1405zx, §1405zy, §1405zz



PROJECT/DRAWING NUMBER

210301

L-08

DRAWING TITLE

GRAPHIC ILLUSTRATION 8  
SECTION A  
MIDTOWN CITY STREET

ISSUED FOR

DRAFT DAD

DESIGNED BY:

DRAWN BY:

REVIEWED BY:

DATE: DECEMBER 22, 2010

PROJECT/CLIENT

MIDTOWN REDEVELOPMENT  
PROJECT  
(FORMER MIDTOWN PLAZA  
SITE)

CITY OF ROCHESTER  
DEPARTMENT OF  
ENVIRONMENTAL SERVICES



NO. REVISION BY DATE

NO.	REVISION	BY	DATE
1			
2			
3			
4			
5			
6			

It is the policy of the City of Rochester, New York, to encourage the development of a high quality urban environment. The City of Rochester, New York, is committed to the development of a high quality urban environment. The City of Rochester, New York, is committed to the development of a high quality urban environment. The City of Rochester, New York, is committed to the development of a high quality urban environment.





50'

NO.	REVISION	BY	DATE
1			
2			
3			
4			
5			
6			

It is the policy of the City of Rochester, New York, to encourage the development of a vibrant downtown area. This drawing is prepared under the direction of a licensed architect, professional engineer, or landscape architect. The design is intended to be used in conjunction with the City of Rochester, New York, and the State of New York. The design is not intended to be used for any other purpose. The design is not intended to be used for any other purpose. The design is not intended to be used for any other purpose.

**TROWBRIDGE & WOLF**  
LANDSCAPE ARCHITECTS LP

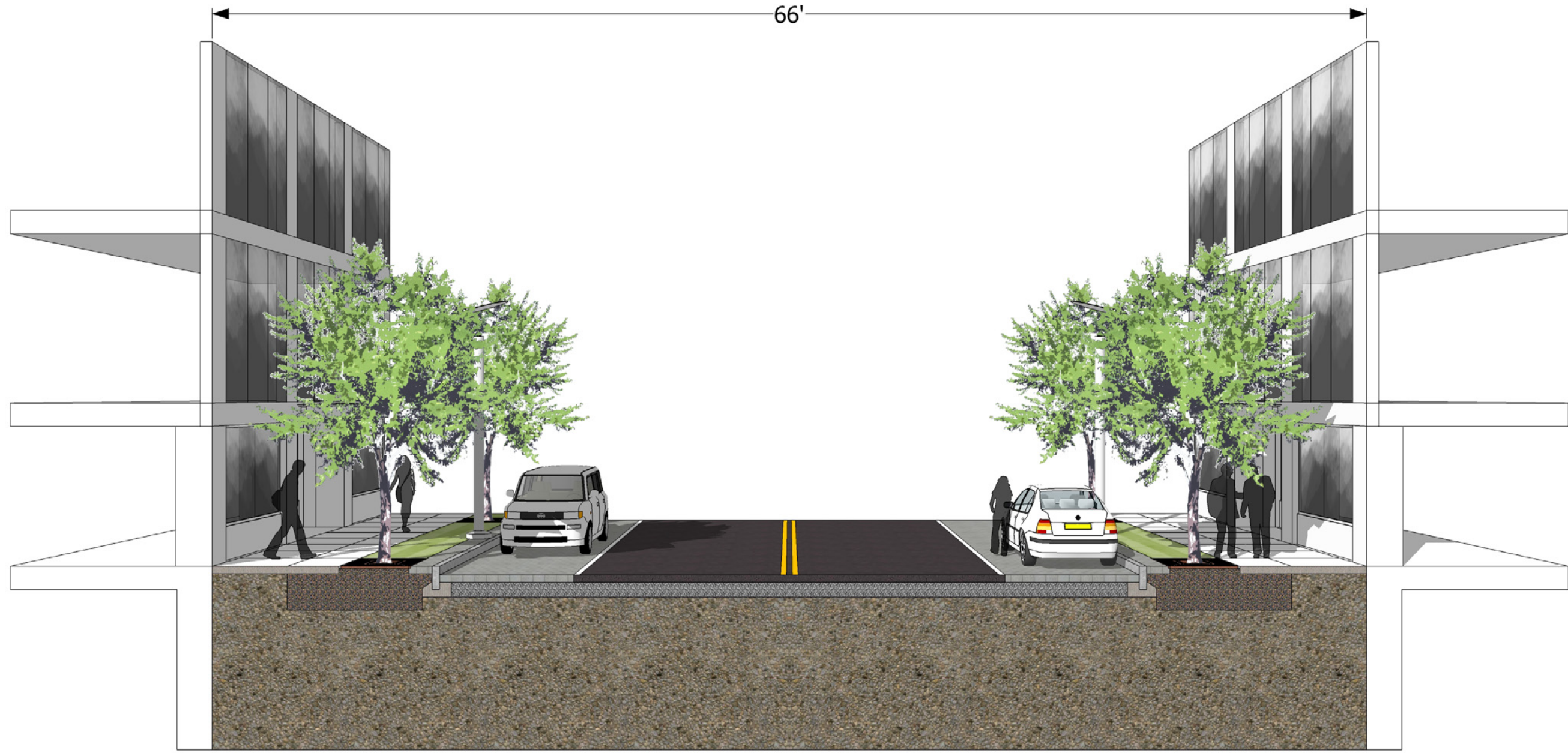
PROJECT/CLIENT  
MIDTOWN REDEVELOPMENT PROJECT  
(FORMER MIDTOWN PLAZA SITE)  
CITY OF ROCHESTER  
DEPARTMENT OF ENVIRONMENTAL SERVICES

DRAWING TITLE  
GRAPHIC ILLUSTRATION 9  
SECTION B CORTLAND PEDESTRIAN STREET

ISSUED FOR  
DRAFT DAD

DESIGNED BY: \_\_\_\_\_  
DRAWN BY: \_\_\_\_\_  
DATE: DECEMBER 22, 2010  
REVIEWED BY: \_\_\_\_\_

PROJECT/DRAWING NUMBER  
210301  
L-09



66'

NO.	REVISION	BY	DATE
1			
2			
3			
4			
5			
6			

It is a violation of the New York Education Law §1405.14b, Sec. 2709, for any architect, engineer, or landscape architect to prepare, or cause to be prepared, any drawing, specification, or report, or any part thereof, which is to be used in connection with the design, construction, or execution of any work, unless such drawing, specification, or report, or any part thereof, is signed and sealed and attested to the fact that the seal and notation "sealed by" followed by their signature and date of such attestation, and a specific description of the preparation.

**TWMA**  
**TROWBRIDGE & WOLF**  
 LANDSCAPE ARCHITECTS LLP

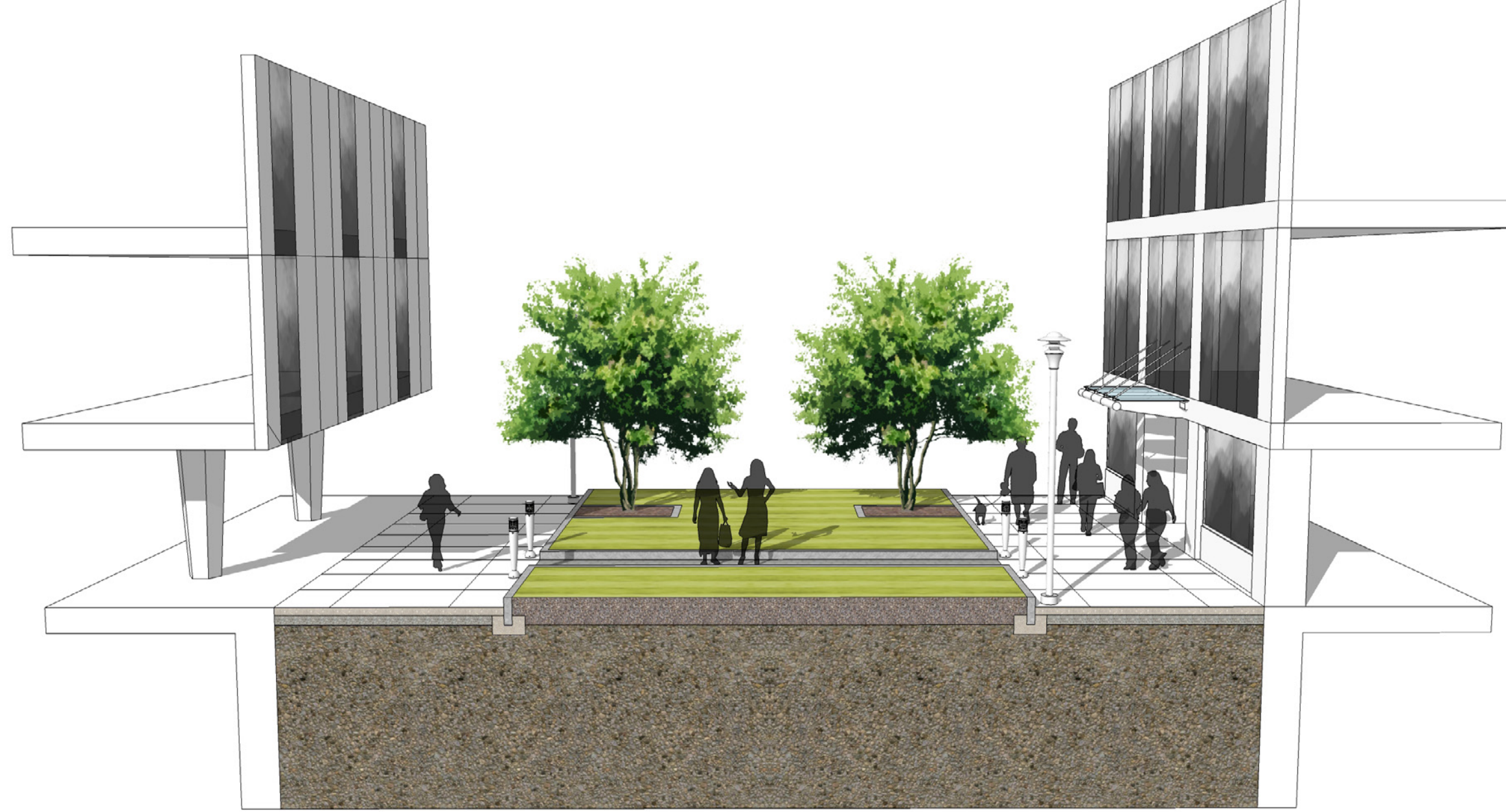
PROJECT/CLIENT  
 MIDTOWN REDEVELOPMENT  
 PROJECT  
 (FORMER MIDTOWN PLAZA  
 SITE)  
 CITY OF ROCHESTER  
 DEPARTMENT OF  
 ENVIRONMENTAL SERVICES

DRAWING TITLE  
**GRAPHIC ILLUSTRATION 10**  
**SECTION C MIDTOWN**  
**DISTRICT STREET**

ISSUED FOR  
**DRAFT DAD**

DESIGNED BY: \_\_\_\_\_  
 DRAWN BY: \_\_\_\_\_  
 DATE: DECEMBER 22, 2010  
 REVIEWED BY: \_\_\_\_\_

PROJECT/DRAWING NUMBER  
 210301  
**L-10**



It is the intention of the City of Rochester, New York, to encourage the development of a vibrant, pedestrian-friendly, and walkable downtown area. This drawing is intended to illustrate the proposed design for the Midtown Plaza area, which is located at the intersection of Elm Street and Broadway. The design includes a central courtyard with trees, a paved walkway, and a grassy area. The building is a modern, multi-story structure with a white facade and dark vertical panels. The drawing is a section view, showing the building's structure and the courtyard's layout.

NO.	REVISION	BY	DATE
1			
2			
3			
4			
5			
6			

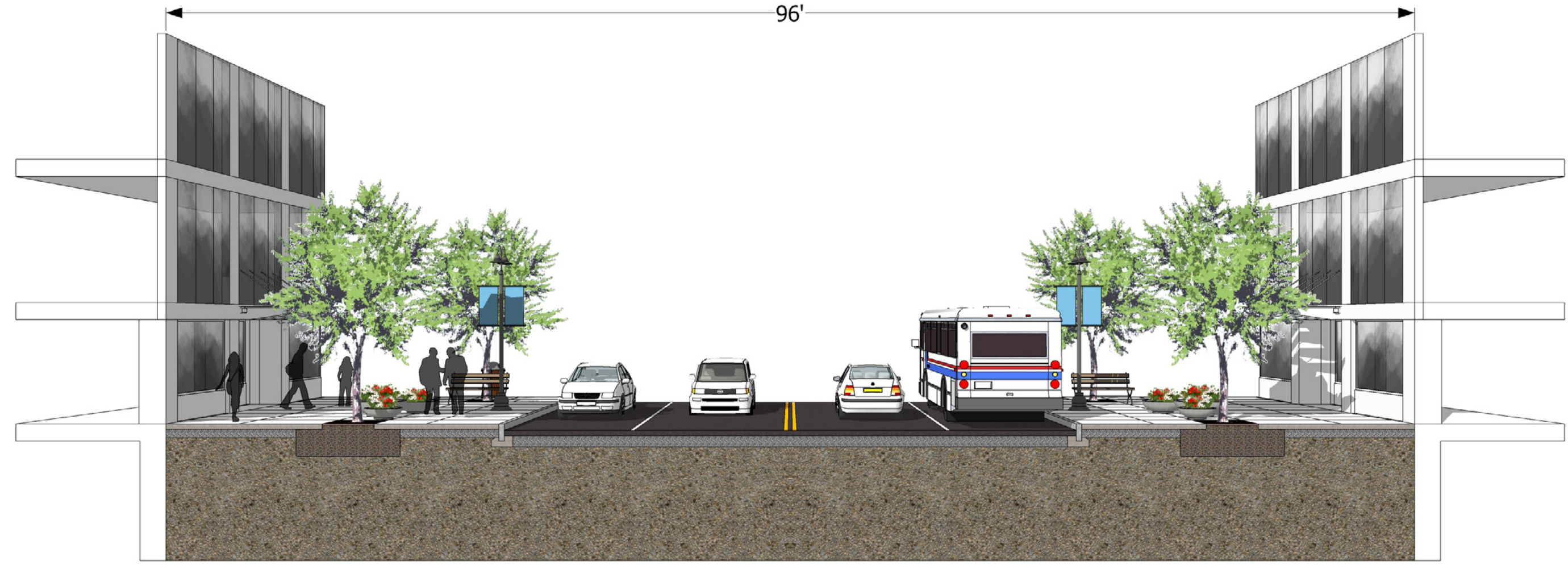
It is the intention of the City of Rochester, New York, to encourage the development of a vibrant, pedestrian-friendly, and walkable downtown area. This drawing is intended to illustrate the proposed design for the Midtown Plaza area, which is located at the intersection of Elm Street and Broadway. The design includes a central courtyard with trees, a paved walkway, and a grassy area. The building is a modern, multi-story structure with a white facade and dark vertical panels. The drawing is a section view, showing the building's structure and the courtyard's layout.


**TROWBRIDGE & WOLF**  
 LANDSCAPE ARCHITECTS LLP

PROJECT/CLIENT  
 MIDTOWN REDEVELOPMENT  
 PROJECT  
 (FORMER MIDTOWN PLAZA  
 SITE)  
 CITY OF ROCHESTER  
 DEPARTMENT OF  
 ENVIRONMENTAL SERVICES

DRAWING TITLE  
**GRAPHIC ILLUSTRATION 11**  
**SECTION D**  
**HISTORIC ELM STREET**  
 ISSUED FOR  
**DRAFT DAD**  
 DESIGNED BY:  
 DRAWN BY:  
 DATE: DECEMBER 22, 2010  
 REVIEWED BY:

PROJECT/DRAWING NUMBER  
 210301  
**L-11**



96'

NO.	REVISION	BY	DATE
1			
2			
3			
4			
5			
6			

It is the policy of the City of Rochester, New York, to encourage the use of the services of a professional engineer, architect, or landscape architect in the design and construction of public works. The City of Rochester, New York, is not responsible for the design or construction of any work unless it is specifically stated in the contract documents. The City of Rochester, New York, is not responsible for the design or construction of any work unless it is specifically stated in the contract documents. The City of Rochester, New York, is not responsible for the design or construction of any work unless it is specifically stated in the contract documents.

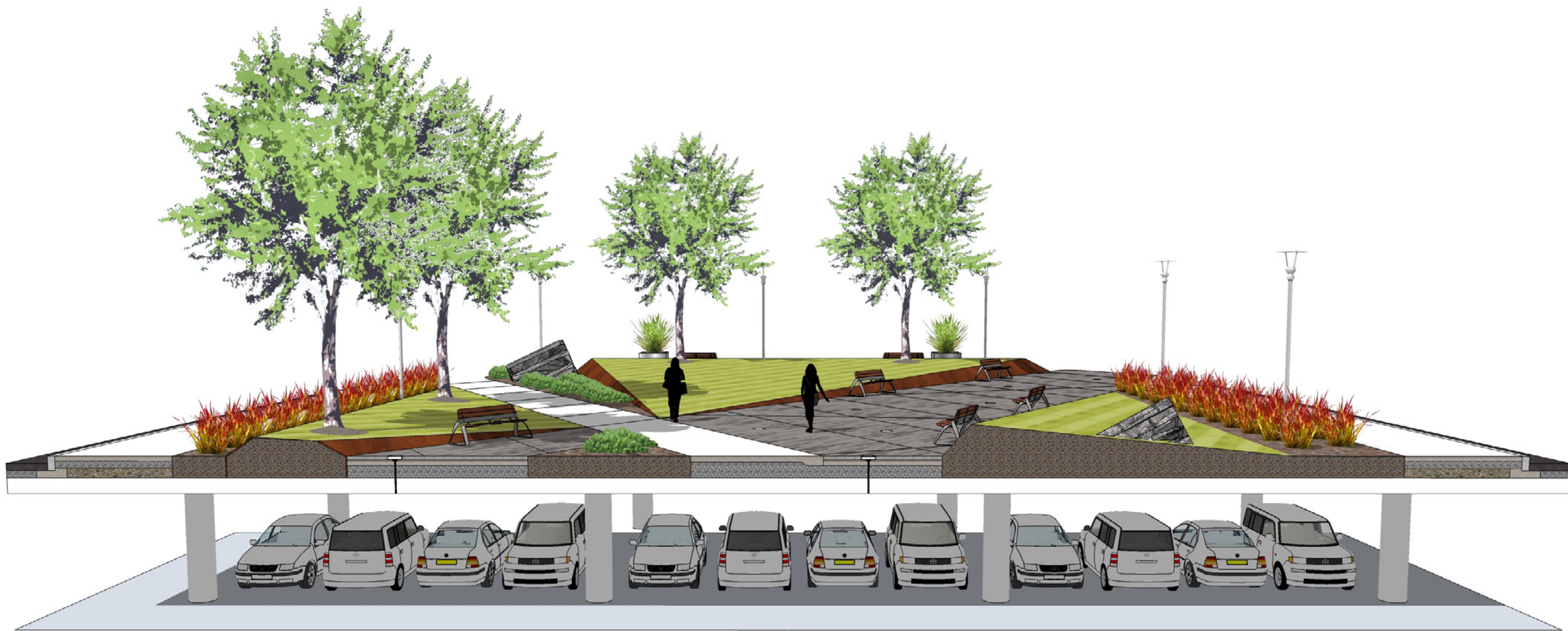
PROJECT/CLIENT  
 MIDTOWN REDEVELOPMENT  
 PROJECT  
 (FORMER MIDTOWN PLAZA  
 SITE)  
 CITY OF ROCHESTER  
 DEPARTMENT OF  
 ENVIRONMENTAL SERVICES

DRAWING TITLE  
**GRAPHIC ILLUSTRATION 12**  
**SECTION E MIDTOWN**  
**MAIN STREET**

ISSUED FOR  
**DRAFT DAD**

DESIGNED BY: \_\_\_\_\_  
 DRAWN BY: \_\_\_\_\_  
 DATE: DECEMBER 22, 2010  
 REVIEWED BY: \_\_\_\_\_

PROJECT/DRAWING NUMBER  
 [ 210301 ]  
 [ L-12 ]



NO.	REVISION	BY	DATE
1			
2			
3			
4			
5			
6			

It is the practice of the State Education Law Article 14B, Sec. 2709, for any architect, landscape architect, professional engineer, or land surveyor to maintain a record of all drawings, specifications, and reports prepared by them, and to make them available for inspection by the State Education Department. It is the practice of the State Education Law Article 14B, Sec. 2709, for any architect, landscape architect, professional engineer, or land surveyor to maintain a record of all drawings, specifications, and reports prepared by them, and to make them available for inspection by the State Education Department.



PROJECT/CLIENT  
 MIDTOWN REDEVELOPMENT  
 PROJECT  
 (FORMER MIDTOWN PLAZA  
 SITE)  
 CITY OF ROCHESTER  
 DEPARTMENT OF  
 ENVIRONMENTAL SERVICES

DRAWING TITLE  
**GRAPHIC ILLUSTRATION 13**  
**SECTION F**  
**MIDTOWN PARK**  
 ISSUED FOR  
**DRAFT DAD**  
 DESIGNED BY: \_\_\_\_\_  
 DRAWN BY: \_\_\_\_\_  
 DATE: DECEMBER 22, 2010  
 REVIEWED BY: \_\_\_\_\_

PROJECT/DRAWING NUMBER  
 210301  
**L-13**



PROJECT/CLIENT  
MIDTOWN REDEVELOPMENT  
PROJECT  
MIDTOWN PLAZA  
(FORMER MIDTOWN PLAZA  
SITE)

CITY OF ROCHESTER  
DEPARTMENT OF  
ENVIRONMENTAL SERVICES

DRAWING TITLE  
**GRAPHIC ILLUSTRATION 14  
SECTION G MIDTOWN  
STREET WITH GARAGE**

ISSUED FOR  
**DRAFT DAD**

DESIGNED BY: \_\_\_\_\_  
DRAWN BY: \_\_\_\_\_  
DATE: DECEMBER 22, 2010  
REVIEWED BY: \_\_\_\_\_

PROJECT/DRAWING NUMBER  
210301  
**L-14**

NO.	REVISION	BY	DATE
1			
2			
3			
4			
5			
6			

It is the function of the New York Education Law Article 145, Sec. 2709, for any architect, engineer, or landscape architect, professional engineer, or land surveyor to be duly licensed by the State Education Department. The seal and signature of any such professional shall only be valid when used in connection with the specific description of the profession, and shall only be used in the name of the professional, or in the name of a partnership, corporation, or other legal entity, and shall only be used in the name of the professional, or in the name of a partnership, corporation, or other legal entity, and shall only be used in the name of the professional, or in the name of a partnership, corporation, or other legal entity.