

GENERAL NOTES

The sounding information depicted on this map represents the results of surveys made on the date indicated and can only be relied on as indicating the general condition of the water at that time. The geographic information on this map was derived from the Coast and Geodetic Survey (CGS) data and is not intended to be used for any other purpose. The soundings are referred to the International Great Lakes Datum 1985 (IGLD 1985). All horizontal positions are referred to North American Datum 1983 (NAD83). See the State Specific Notes for appropriate datum. To view a color version of this map, visit a web browser to <http://www.lrb.usace.army.mil/wholocks/watermap/survey.html>. This drawing was prepared using a CAD system. Scaling may be distorted.

Drawn by:	PAN
Checked by:	ACK
Reviewed by:	ROBERT H. FOLGER III PLS
Approved:	Chief, Survey Section
Date:	Reynold N. Lewis
	Chief, NY/PA Navigation and Maintenance Section

U.S. ARMY ENGINEER DISTRICT
BUFFALO, NEW YORK 14207-3199

ROCHESTER HARBOR, N.Y.

PROJECT CONDITION SOUNDINGS 2011
SCALE OF FEET
50.0' - 100.0' - 200.0'

SCALE: 1" = 200'

Sheet reference number:
VH - 101
Sheet 1 of 2
115-ROC-11

PROJECT DEPTHS AND SOUNDINGS ARE REFERRED TO LOW WATER DATUM OF 243.3 FEET. HORIZONTAL CONTROL IS REFERRED TO NEW YORK WEST ZONE.

SITE SPECIFIC NOTES:

PROJECT DEPTHS:
24.0 FEET - STA. 0+00 TO STA. 48+00
23.0 FEET - STA. 48+00 TO STA. 92+00
21.0 FEET - STA. 92+00 TO STA. 105+00

MAINTENANCE DEPTHS:
22.0 FEET - STA. 0+00 TO STA. 48+00
21.0 FEET - STA. 48+00 TO STA. 105+00

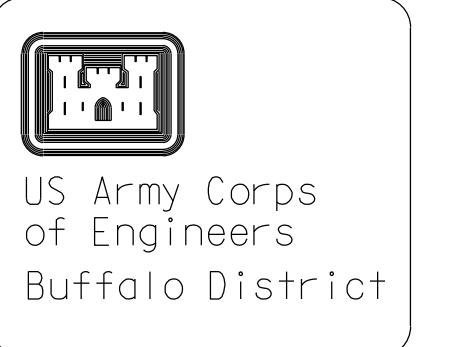
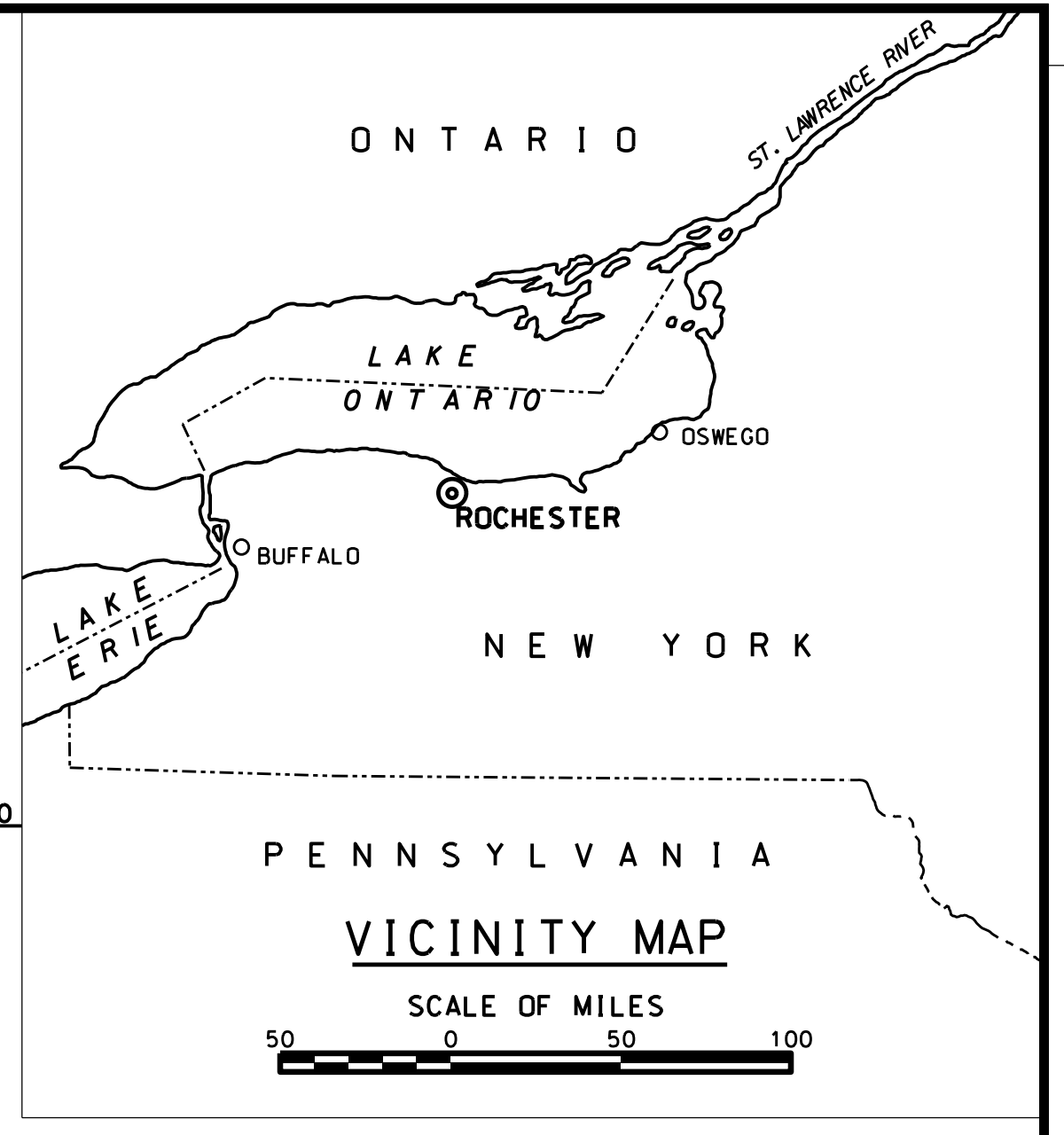
THE FILES USED IN THE PREPARATION OF THIS DRAWING ARE ON DISK: HARBOR 2011
FILES: ROC11PCVH1011-2.DGN
ROC11PCV-HP.DGN

SOUNDINGS WERE TAKEN BY THE BUFFALO DISTRICT ARMY CORPS OF ENGINEERS BY D. BANNING AND PARTY ON APRIL 12, 2011 THROUGH APRIL 14, 2011, USING GPS POSITIONING, POS-MV VER.4 AND ASHTECH BR2G BEACON USED: YOUNGSTOWN SONAR HEAD: 240 KHZ, SEABATT 7101 MULTIBEAM SONAR HEAD: 1.5 DEGREE BEAMS 210 DEGREE ARC HEAVE PITCH AND ROLL: APPLANIS POS-MV VER. 4 VELOCITY PROFILER: RESON SVP. SOFTWARE USED: HYPACK SURVEY SURVEY LAUNCH CROTTY

PRELIMINARY UNCHECKED FOR REVIEW

CHECK PRINT FOR FINAL DRAWING

*** SAFETY PAYS ***



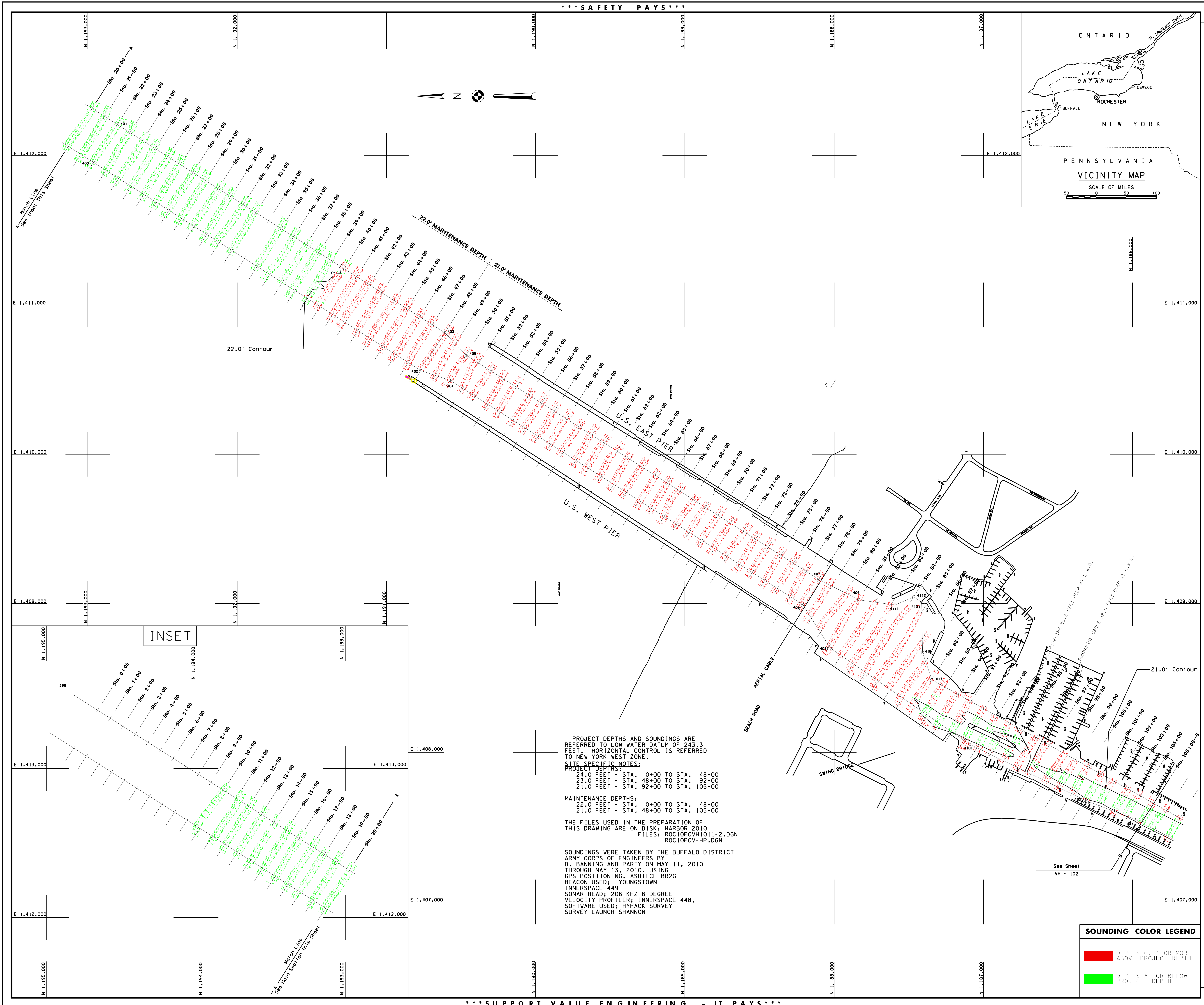
General Notes
The information depicted on this map represents the results of surveys made on the date indicated and can only be considered as indicating the general condition of the project. Unless otherwise noted on this map, all depths and soundings are in feet and referred to the International Great Lakes Datum 1985 (IGLD 1985) and all horizontal positions are referred to North American Datum 1983 (NAD83). See the Site Plan for details of the project. This drawing was prepared using a CAD system. Scaling may be distorted.

Drawn by: CDD
Checked by:
Reviewed by:
On file: Survey Unit
Approved:
Dates:
Chief: NYPA Navigation and Maintenance Section

U.S. ARMY ENGINEER DISTRICT
CORPS OF ENGINEERS
BUFFALO, NEW YORK 14207-3199

ROCHESTER HARBOR, N.Y.
PROJECT CONDITION SOUNDINGS 2010
SCALE OF FEET
50 0 100 200
SCALE: 1" = 200'

Sheet reference number:
VH - 101
Sheet 1 of 2
105-ROC-11



PROJECT DEPTHS AND SOUNDINGS ARE REFERRED TO LOW WATER DATUM OF 243.3 FEET. HORIZONTAL CONTROL IS REFERRED TO NEW YORK WEST ZONE.

SITE SPECIFIC NOTES:
PROJECT DEPTHS:
24.0 FEET - STA. 0+00 TO STA. 48+00
23.0 FEET - STA. 48+00 TO STA. 92+00
21.0 FEET - STA. 92+00 TO STA. 105+00

MAINTENANCE DEPTHS:
22.0 FEET - STA. 0+00 TO STA. 48+00
21.0 FEET - STA. 48+00 TO STA. 105+00

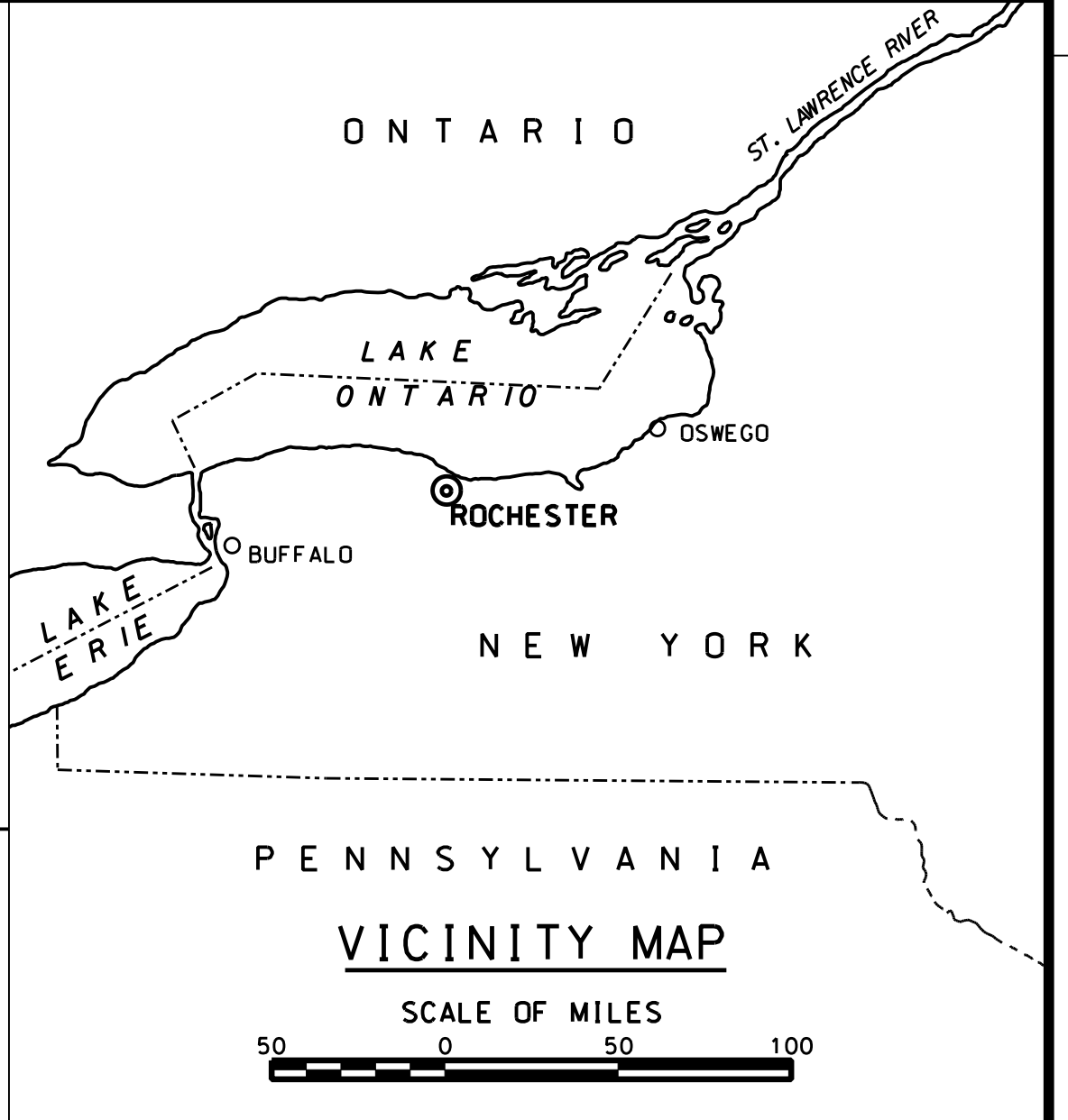
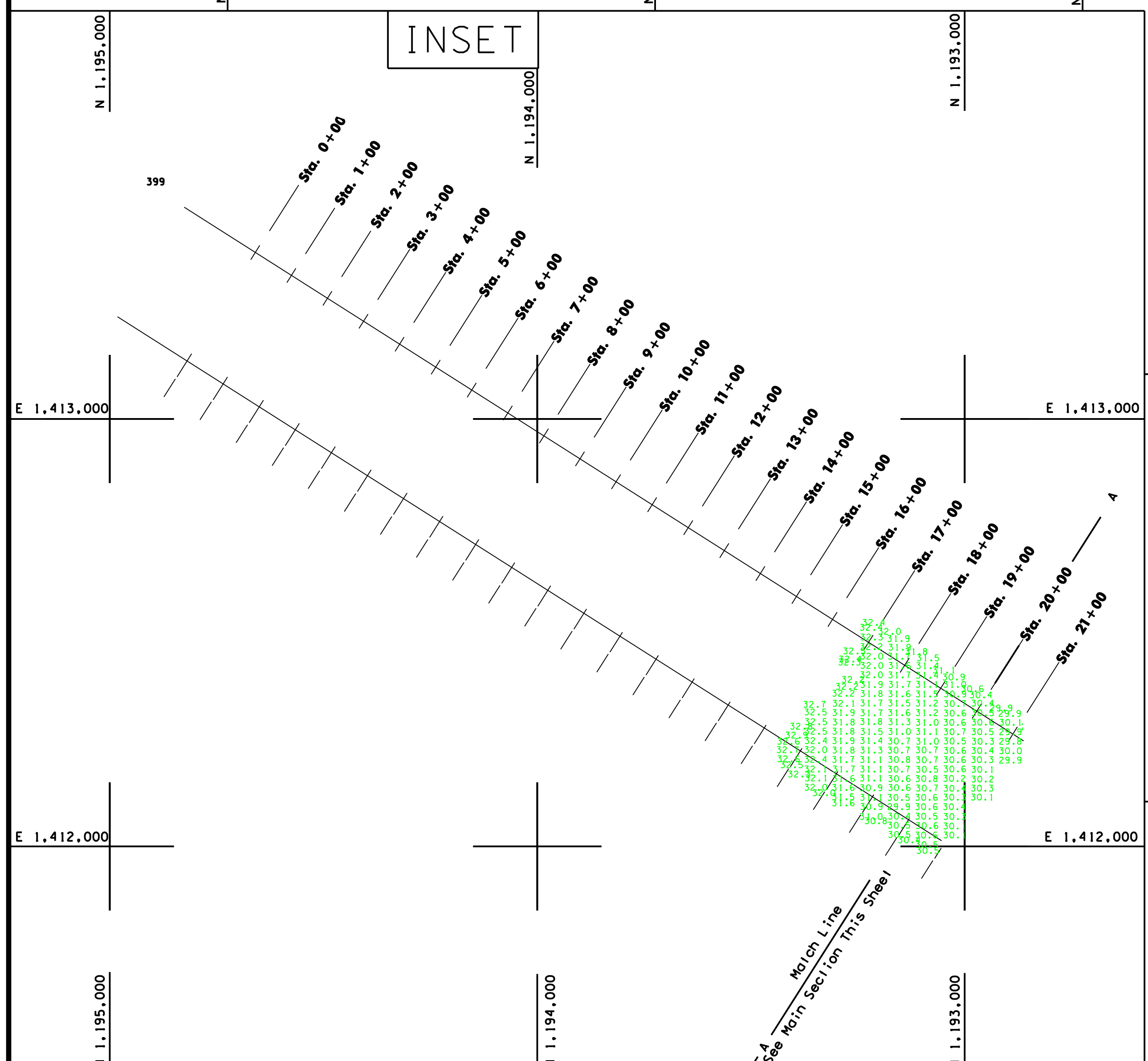
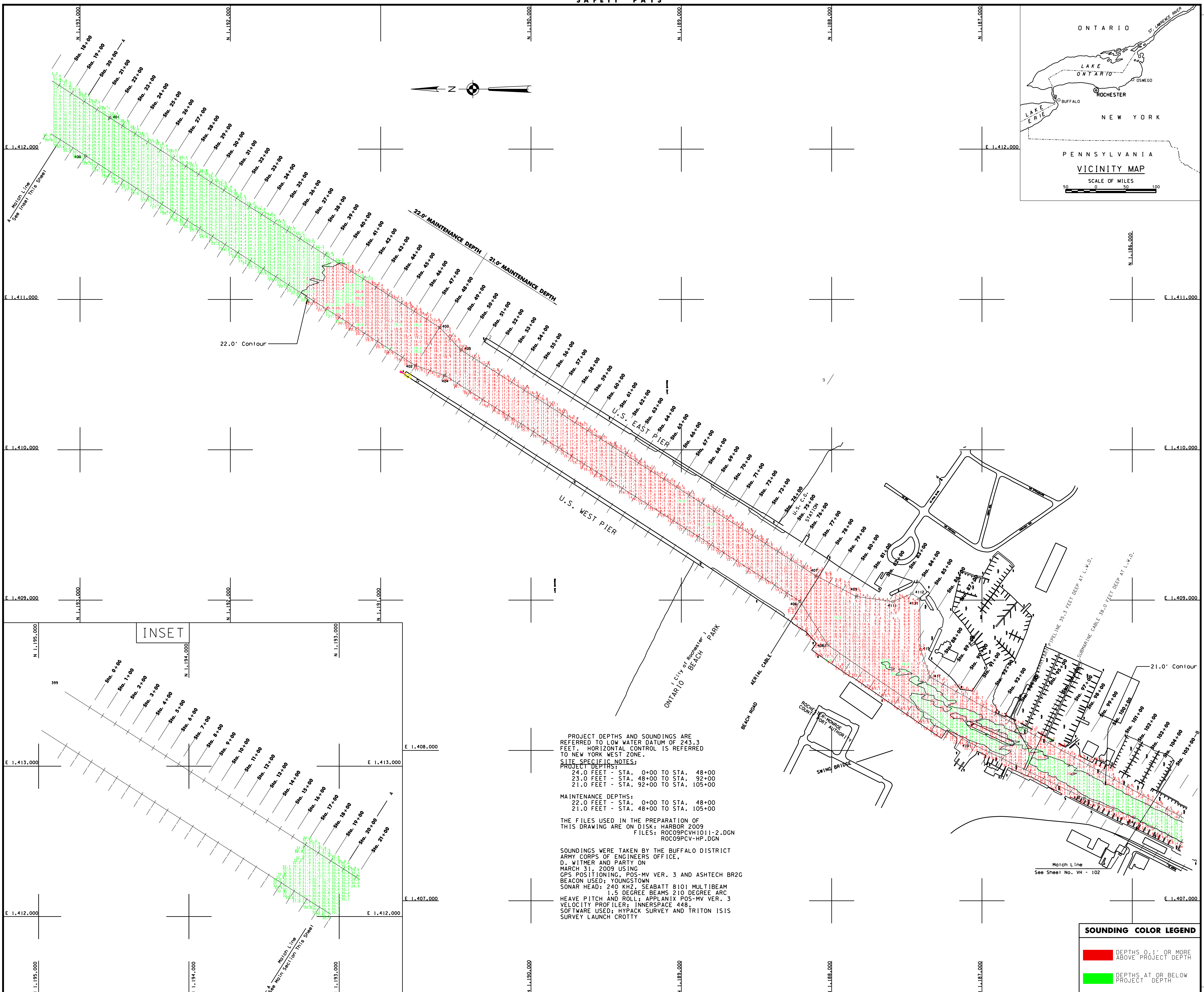
THE FILES USED IN THE PREPARATION OF THIS DRAWING ARE ON DISK: HARBOR 2010
FILES: ROC10PCVH1011-2.DGN
ROC10PCV-HP.DGN

SOUNDINGS WERE TAKEN BY THE BUFFALO DISTRICT ARMY CORPS OF ENGINEERS BY D. BANNING AND PARTY ON MAY 11, 2010 THROUGH MAY 13, 2010. USING GPS POSITIONING, ASHTECH BR2G BEACON USED: YOUNGSTOWN INNERSPACE 449 SONAR HEAD: 208 KHZ 8 DEGREE VELOCITY PROFILER; INNERSPACE 448. SOFTWARE USED: HYPACK SURVEY SURVEY LAUNCH SHANNON

SOUNDING COLOR LEGEND

Red	DEPTHS 0.1' OR MORE ABOVE PROJECT DEPTH
Green	DEPTHS AT OR BELOW PROJECT DEPTH

*** SUPPORT VALUE ENGINEERING - IT PAYS ***



PROJECT DEPTHS AND SOUNDINGS ARE REFERRED TO LOW WATER DATUM OF 243.3 FEET. HORIZONTAL CONTROL IS REFERRED TO NEW YORK WEST ZONE.

SITE SPECIFIC NOTES:

PROJECT DEPTHS:
 24.0 FEET - STA. 0+00 TO STA. 48+00
 23.0 FEET - STA. 48+00 TO STA. 92+00
 21.0 FEET - STA. 92+00 TO STA. 105+00

MAINTENANCE DEPTHS:
 22.0 FEET - STA. 0+00 TO STA. 48+00
 21.0 FEET - STA. 48+00 TO STA. 105+00

THE FILES USED IN THE PREPARATION OF THIS DRAWING ARE ON DISK: HARBOR 2009
 FILES: ROC09PCVH1011-2.DGN
 ROC09PCV-HP.DGN

SOUNDINGS WERE TAKEN BY THE BUFFALO DISTRICT ARMY CORPS OF ENGINEERS OFFICE, D. WITMER AND PARTY ON MARCH 31, 2009 USING GPS POSITIONING, POS-MV VER. 3 AND ASHTECH BR2G BEACON USED: YOUNGSTOWN SONAR HEAD: 240 KHZ, SEABATT 8101 MULTIBEAM 1.5 DEGREE BEAMS 210 DEGREE ARC HEAVE PITCH AND ROLL: APPLANIX POS-MV VER. 3 VELOCITY PROFILER: INNERSPACE 448, SOFTWARE USED: HYPACK SURVEY AND TRITON ISIS SURVEY LAUNCH CROTTY

SOUNDING COLOR LEGEND

[Red Box]	DEPTHS 0.1' OR MORE ABOVE PROJECT DEPTH
[Green Box]	DEPTHS AT OR BELOW PROJECT DEPTH

US Army Corps of Engineers Buffalo District

GENERAL NOTES:
 The information depicted on this map represents the results of surveys made on the date indicated and should not be considered as indicating the general condition of the project. This drawing is not to be used for any purpose other than that for which it was prepared. For more information, refer to the project files on the project website. Specific notes are provided for appropriate details. To view a color version of this map, point a web browser to <http://www.17h.usace.army.mil/rockharbor/survey/survey.html>. This drawing was prepared using a CAD system. Scaling may be distorted.

Drawn by: CAD
 Checked by:
 Reviewed by:
 Chief, Survey Unit
 Date:

U.S. ARMY ENGINEER DISTRICT
 BUFFALO, NEW YORK 14207-3199

ROCHESTER HARBOR, N.Y.
PROJECT CONDITION SOUNDINGS 2009
 SCALE OF FEET
 50.0' 100.0' 200.0'

Sheet reference number:
VH - 101
 Sheet 1 of 2
09S-ROC-11