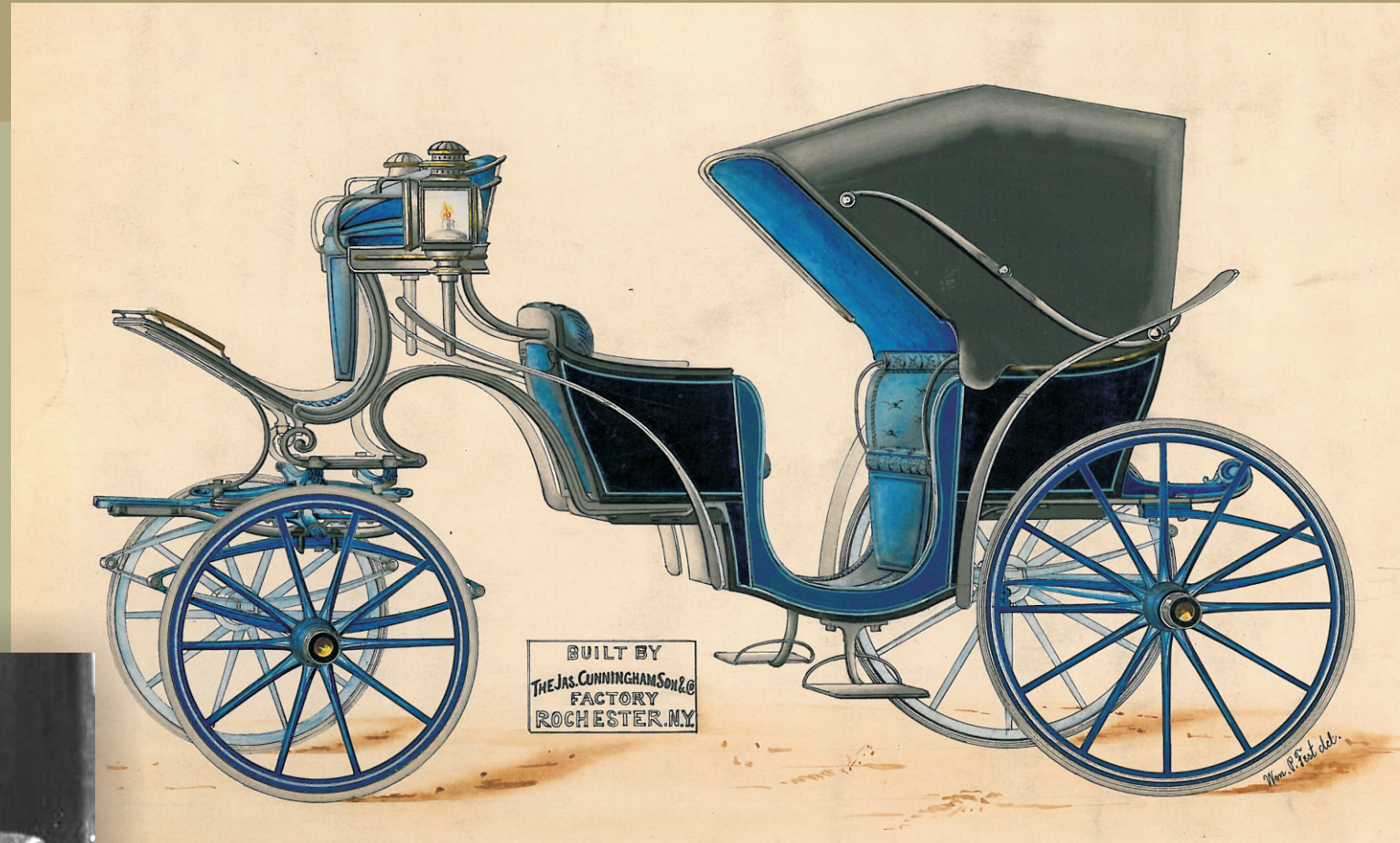


Traces of the Past

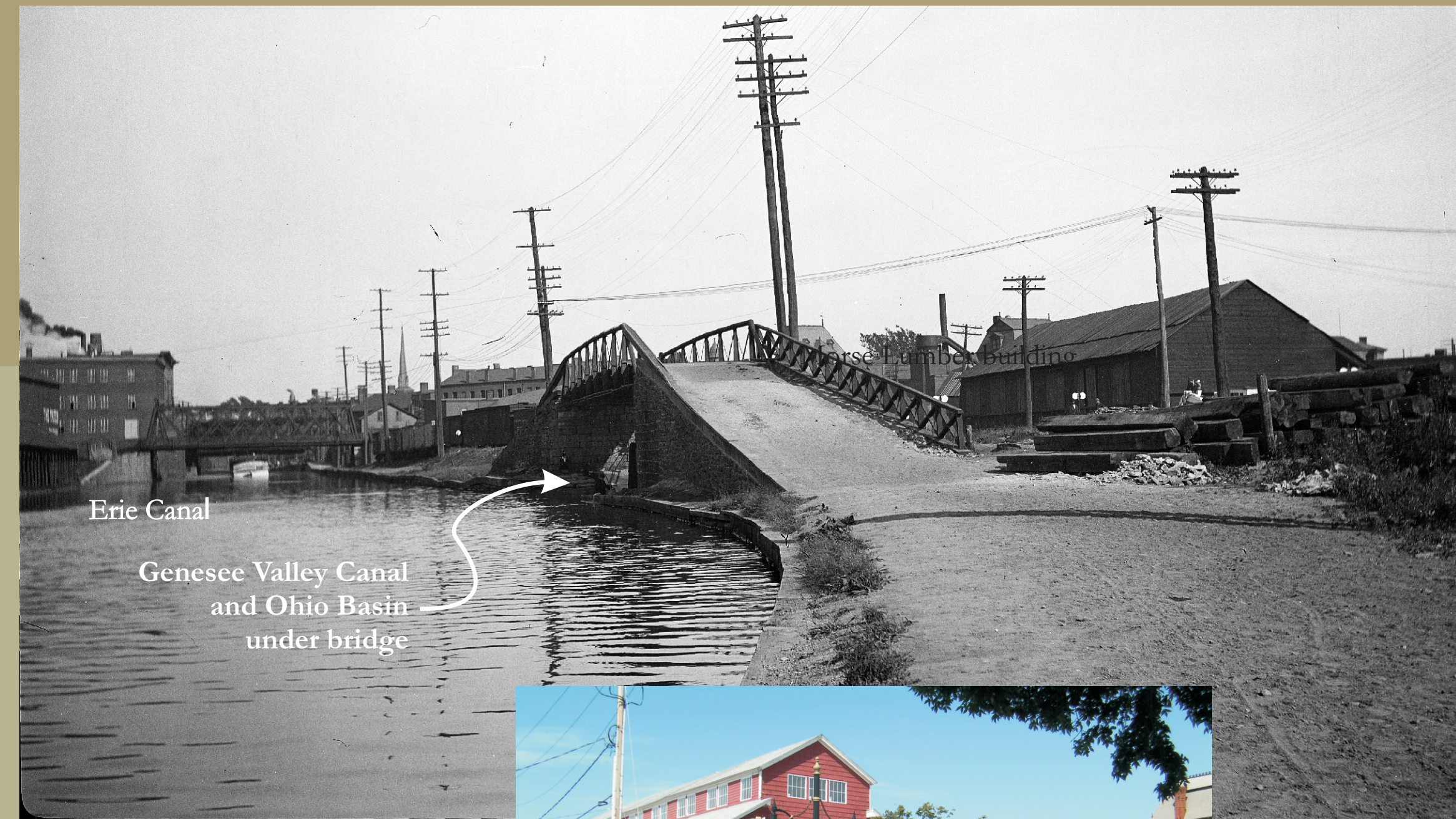
Canals and railroads stimulate the growth of new businesses which are still visible today.

James Cunningham Carriage Works
Constructed in 1850, this six-story brick structure spans 285 feet occupying the block between Litchfield and Canal Streets. Lake Ontario, the city and the surrounding countryside could be seen from its 150-foot tower balcony. Started in 1838, Cunninghams's two partners went bankrupt while Cunningham forged ahead with marketing sturdy, well-designed carriages, hearses, ambulances and later trucks, automobiles, tanks and airplanes. It was bought by Gleason Works in the 1960s.

Right: Cunningham carriage design illustration circa 1861
Carriage image courtesy of the family of G. Carson Baker, a Cunningham designer



Below: Circa 1927 experimental track vehicle



Erie Canal
Genesee Valley Canal and Ohio Basin under bridge

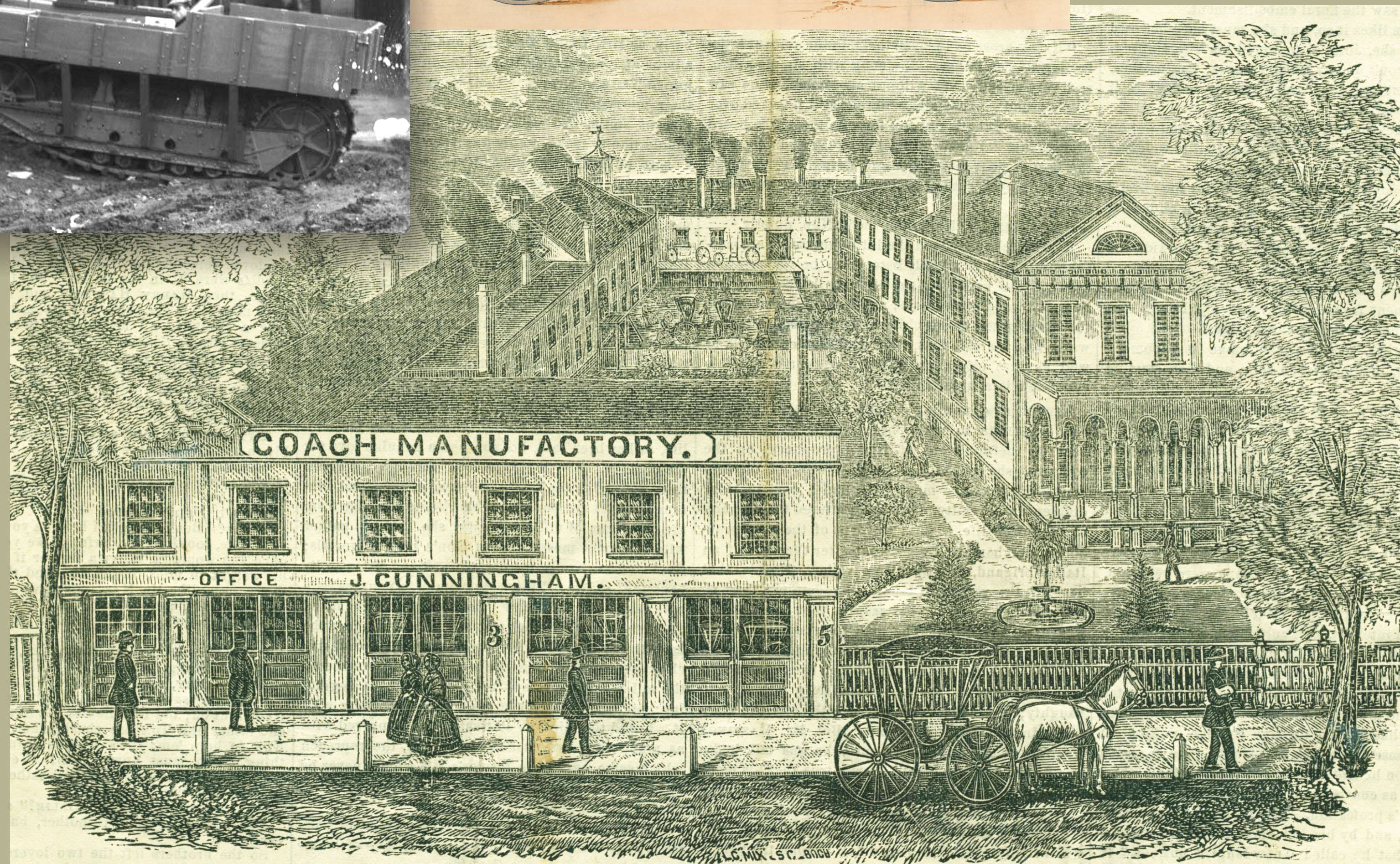
Left: View, looking east, at intersection of Erie & Genesee Valley Canals
From the Albert R. Stone Negative Collection, Rochester Museum & Science Center



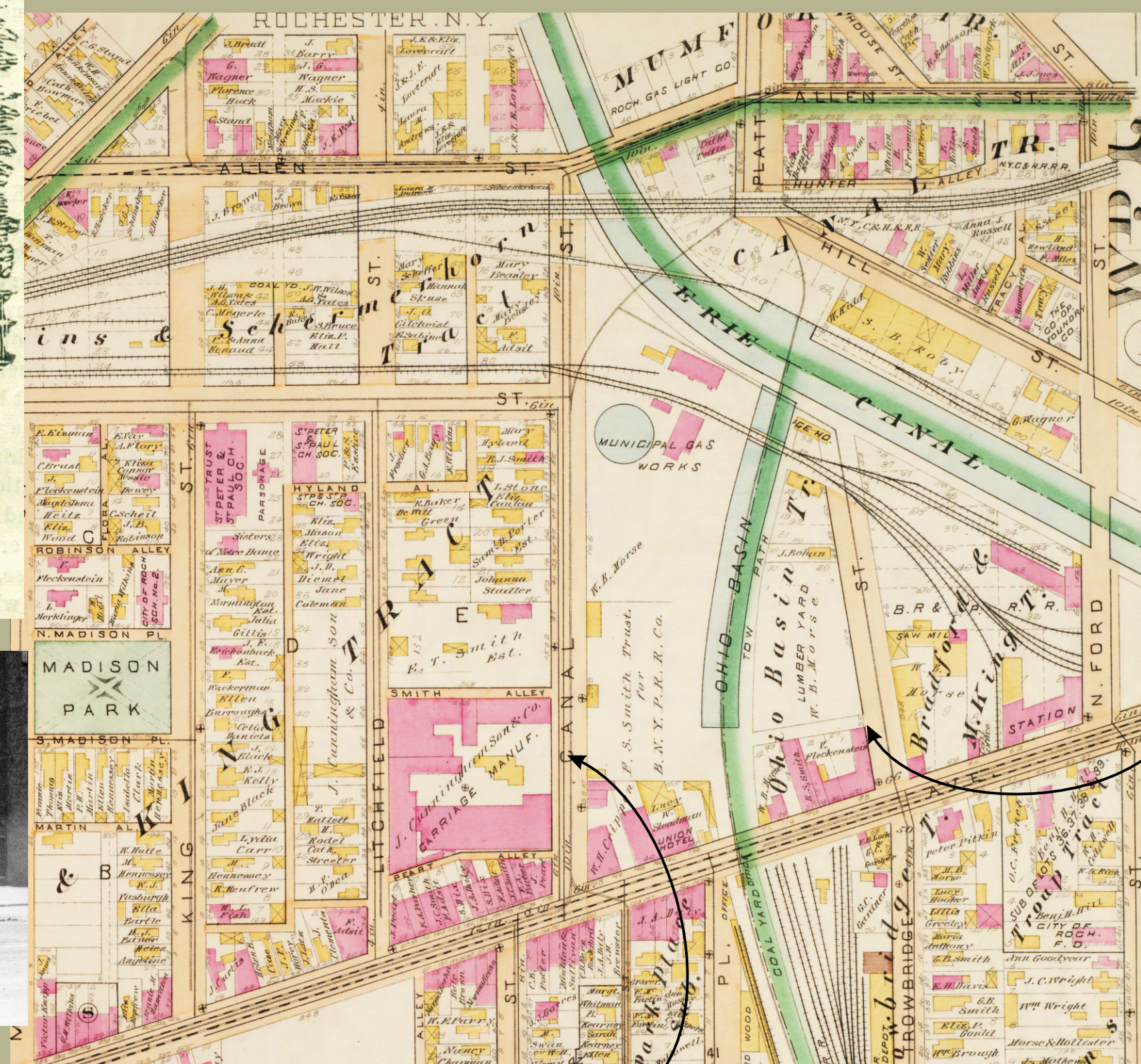
Left: 2009 photograph of Morse Lumber
Courtesy of AustinDesign3D

Morse Lumber
Morse Lumber supplied boat yards and builders from the early 19th century to today.

WM. B. MORSE & CO.,
LUMBER YARD,
—AND—
STEAM PLANING MILL,
30 West Avenue,
Rochester, N. Y.
Have Constantly on Hand For Sale, a complete assortment of seasoned Pine and Hemlock Lumber,
Also, Dressed Flooring and Siding, Shingles, Lath, Fence Posts, Etc.
W. B. MORSE. LUMBER PLANED AND SAWED TO ORDER. S. G. HOLLISTER.



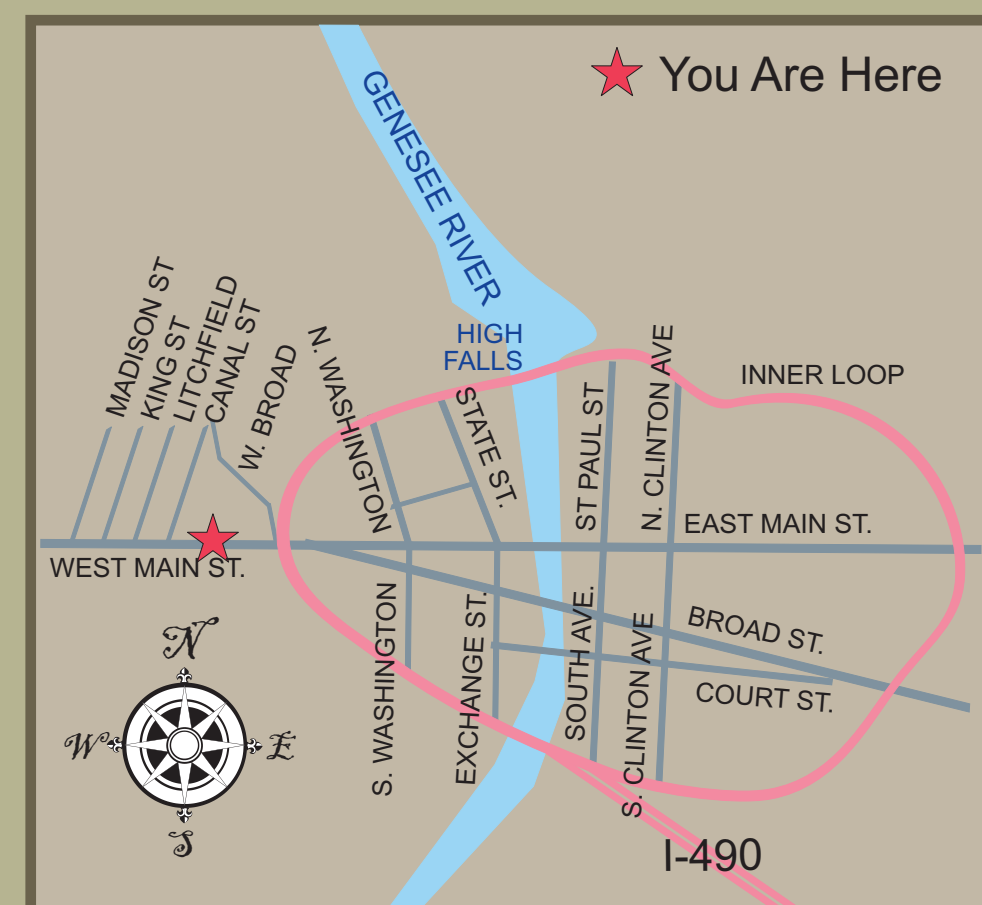
Right: Cunningham factory on Canal Street circa 1861.
Rochester Images: From the Collection of the Rochester Public Library Local History Division



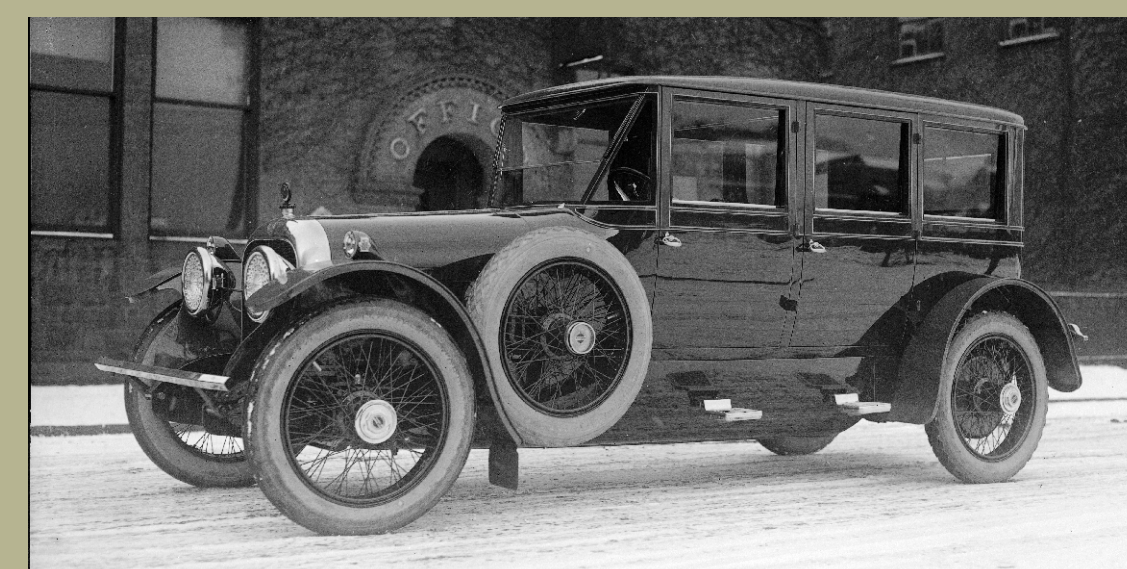
Above: 1880 Advertisement in City Directory
Rochester Images: From the Collection of the Rochester Public Library Local History Division

Wm. B. Morse Lumber yard

Left: Detail-1888 Platt Map.
Rochester Images: From the Collection of the Rochester Public Library Local History Division



Right: Cunningham factory workers circa 1912
From the Albert R. Stone Negative Collection, Rochester Museum & Science Center



Above: Cunningham built car circa 1912
From the Albert R. Stone Negative Collection, Rochester Museum & Science Center