

The background image shows a marina with numerous sailboats docked at a pier. In the foreground, there is a building with a grey roof and a stone base. The scene is set on a riverbank with trees and a clear sky.

# PORT OF ROCHESTER - GENESEE RIVER HARBOR MANAGEMENT PLAN

NOVEMBER 14, 2013 | PROJECT ADVISORY COMMITTEE

# Meeting Agenda

- Welcome and Introductions
- Project Updates
- Key Findings: *What We've Learned*
- Next Steps



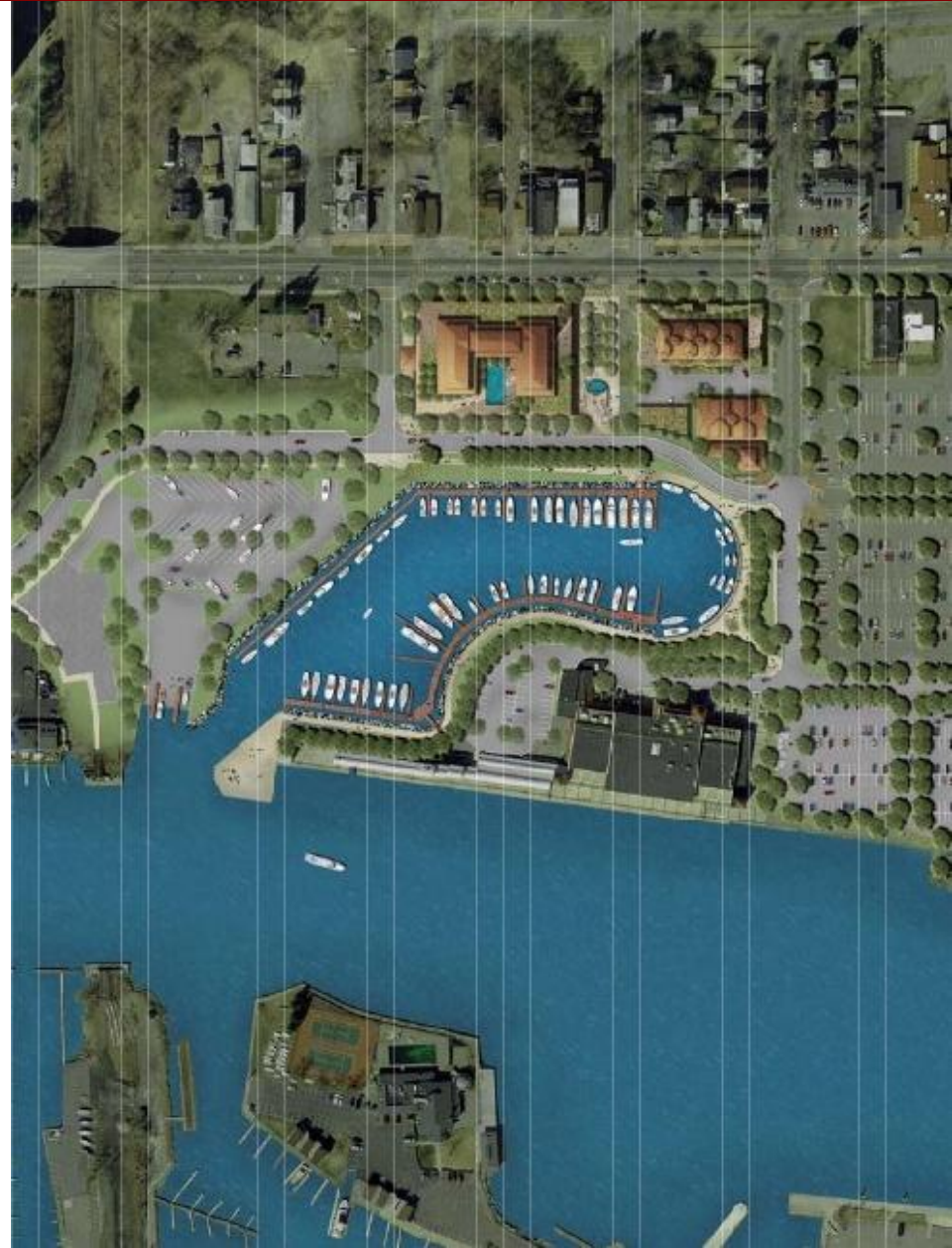


**HARBOR MANAGEMENT PLAN**

**PROJECT UPDATES**

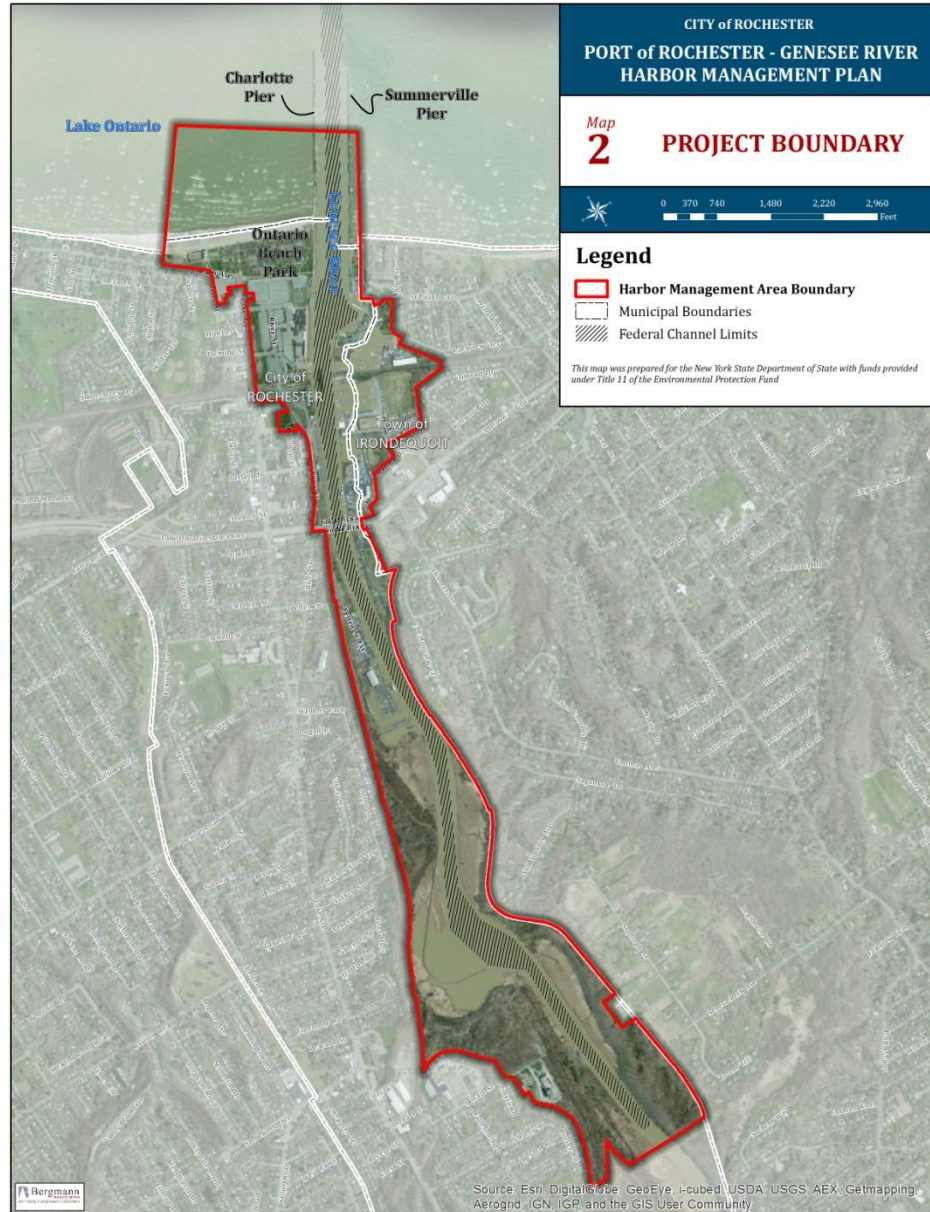
# News From The Harbor

- Port of Rochester Marina Project
- Staffing and Project Management
- LWRP Status
- Inventory and Analysis



# Project Boundary

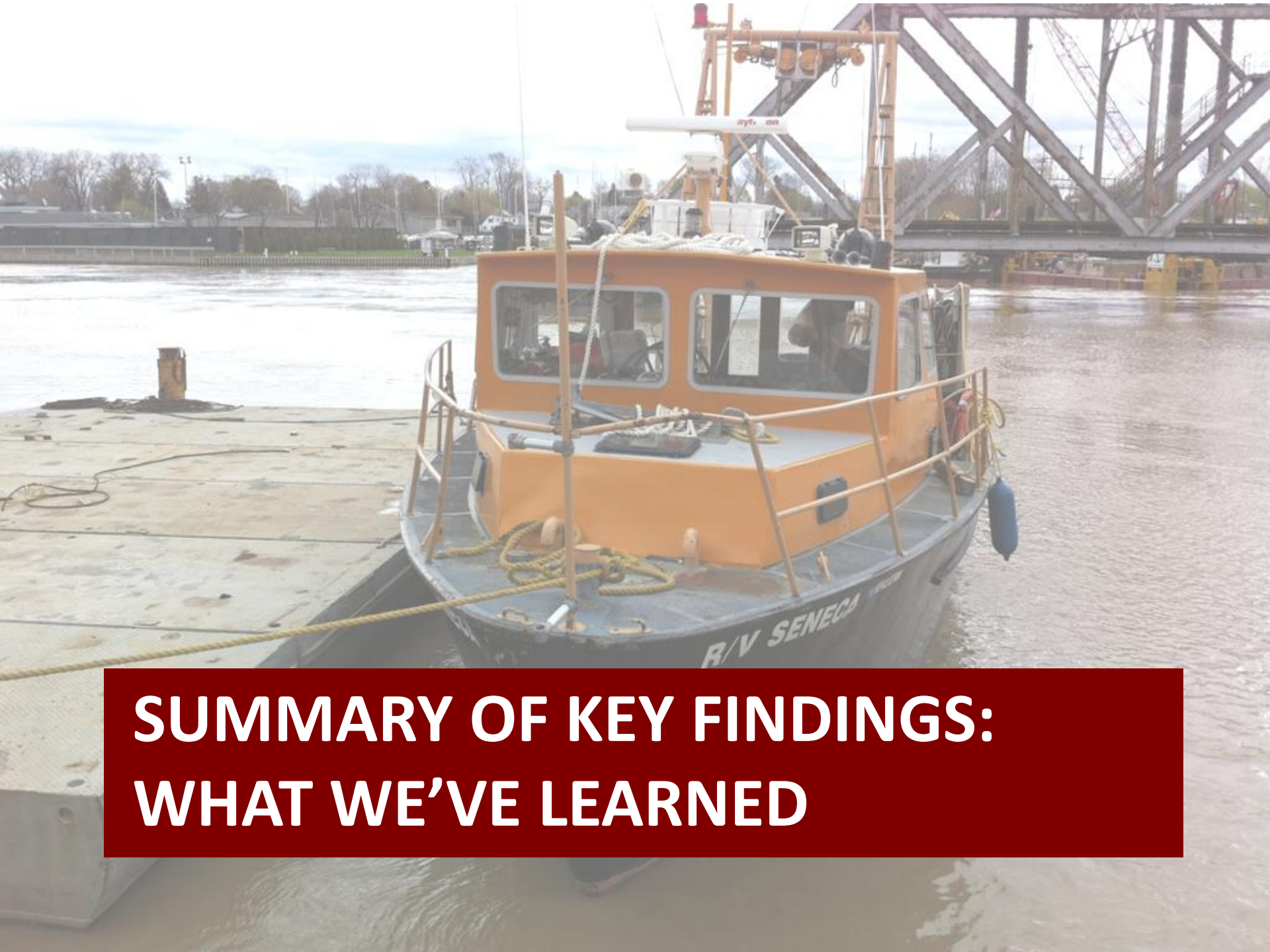
- Confirmed waterside boundary extents
- Landside boundaries reduced



# Stakeholder Meetings

- August & September 2013
- One-on-one meetings with property owners, agencies and operators





# SUMMARY OF KEY FINDINGS: WHAT WE'VE LEARNED

# Key Findings

- Harbor Services & Amenities
- Jurisdictions
- Enforcement
- Dredging
- Commercial Activity
- Surface Water Use: Fishing & Boating
- Water Quality/Lake Levels
- Education
- Management & Operations





# Harbor Services & Amenities

- +/- 1,000 existing slips
- Number of transient docks insufficient
- 1 public boat launch
- 1 NYSDEC fishing access site



# Harbor Services & Amenities

- Limited boat-oriented convenience shopping
  - No bait shops
  - No weigh stations
  - No fish/cleaning station
- 4 major parks with waterfront access
- Water taxi
- Lack of connections to landside destinations/venues



# Jurisdictions

- Agencies work very well together
- New marina will create additional demand for services
- Emergency Response Plan for the Harbor should be prepared
- Underwater ownership remains in question



# Jurisdictions – International Boaters

- U.S. Customs and Border Protection (CBP) must check-in all international travelers
- Additional changes would be required with increase in cruising, including space dedicated for customs check-ins
- Video phone at Shumway Marina



# Enforcement

- Noted enforcement concerns:
  - *Theft of electronic equipment from boats*
  - *Limited enforcement of noise ordinance*
- Perception of too much patrolling
- Coast Guard
  - *Enforces safety requirements/ Homeland security*
- Monroe County Sheriff
  - *Only stop boats for probably cause*
- Rochester Police Department
  - *Not responsible for law enforcement ON the river*



# Public Safety Needs

- Emergency command center
- Multijurisdictional holding cells
- Designated boat storage - *shared water garage or vessel boat house*
- Designated boat docking for each agency
- Temporary pull-off/tie-up location
- 35' pump boat for Fire Dept.
- Radar or camera system to monitor the harbor entrance



# Dredging

- Rochester is classified by the USACE as a Low Use Harbor
- Cruise ships activity can increase dredging priority
- Lack of dredging by USACE limits commercial opportunities
- Potential for Short Sea Shipping and passenger cruises
- If left undredged for 5 years, it would no longer be viable to dredge (2013 most recent dredging)



# Dredging

- Loss of dredging would have notable economic impacts on City / region
- Cost is cheaper for USACE than private parties
- Several agencies are involved with the approval of dredging permits
- Different dredging windows
- Beneficial Use of Dredged Material program to sell dredged material





# Commercial Activity

- The Director of the Orleans County Planning Department has been coordinating a regional dredging plan. This plan has been updated to include the HMA.
- In 2004, the Great Lakes cruising industry generated \$36.8 million in the U.S. - opportunities for Rochester to capitalize on this activity



# Surface Water Use: Fishing

- Public access for recreational and stream fishing is a concern
- Conflicts between fishing and dredging operations
- 20 to 30 fishing charters operate out of the harbor
- There are two major LOC fishing derbies annually - *Lake Ontario Sport Fishing Promotion Council*



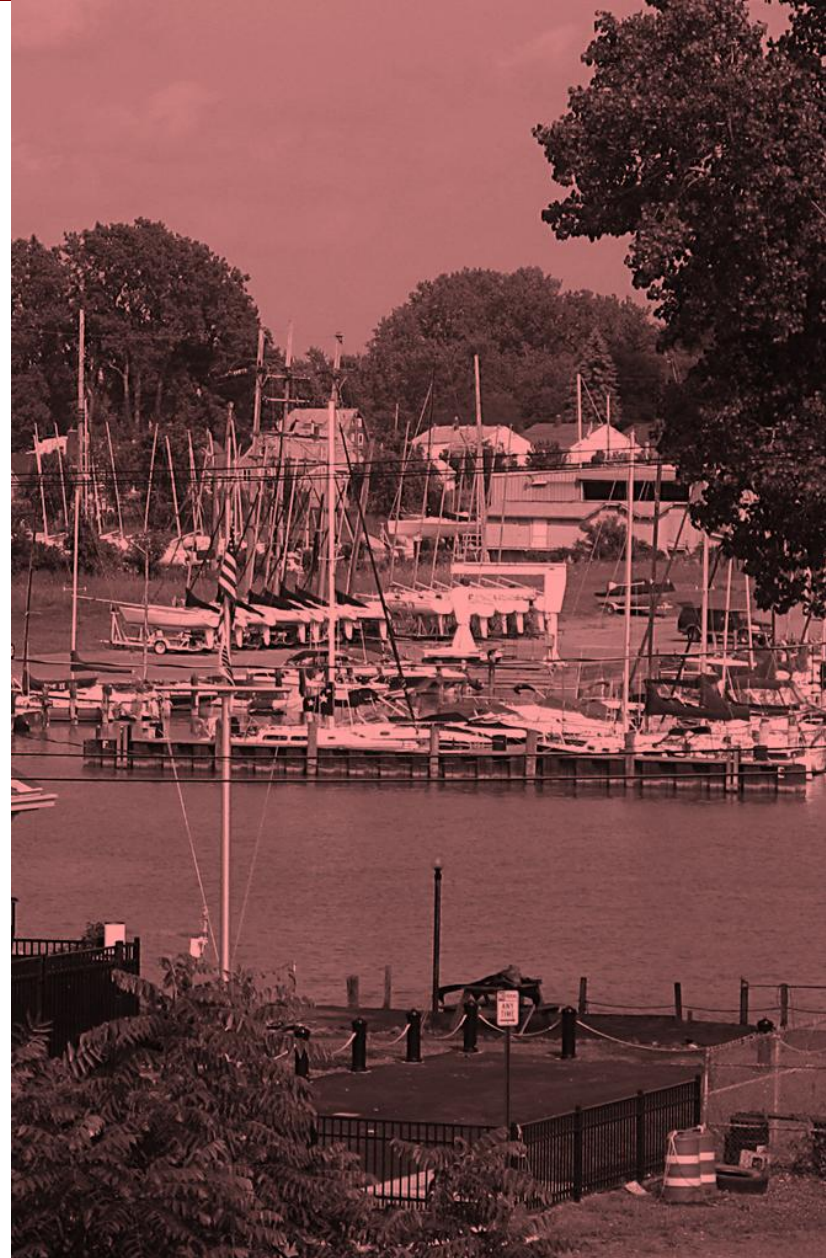
# Surface Water Use: Boating

- One four-lane public boat launch (107 cars w/trailers)
- Boater conflicts not currently a problem
- Storm surge
- Varying opinions about lighting the piers for nighttime boat navigation



# Surface Water Use: Boating

- The harbor hosts at least one major and several modest international regattas each year
- Local regattas daily throughout the season
- Numerous sailing training classes and youth races
- US Coast Guard administers Maritime Event Permits for events



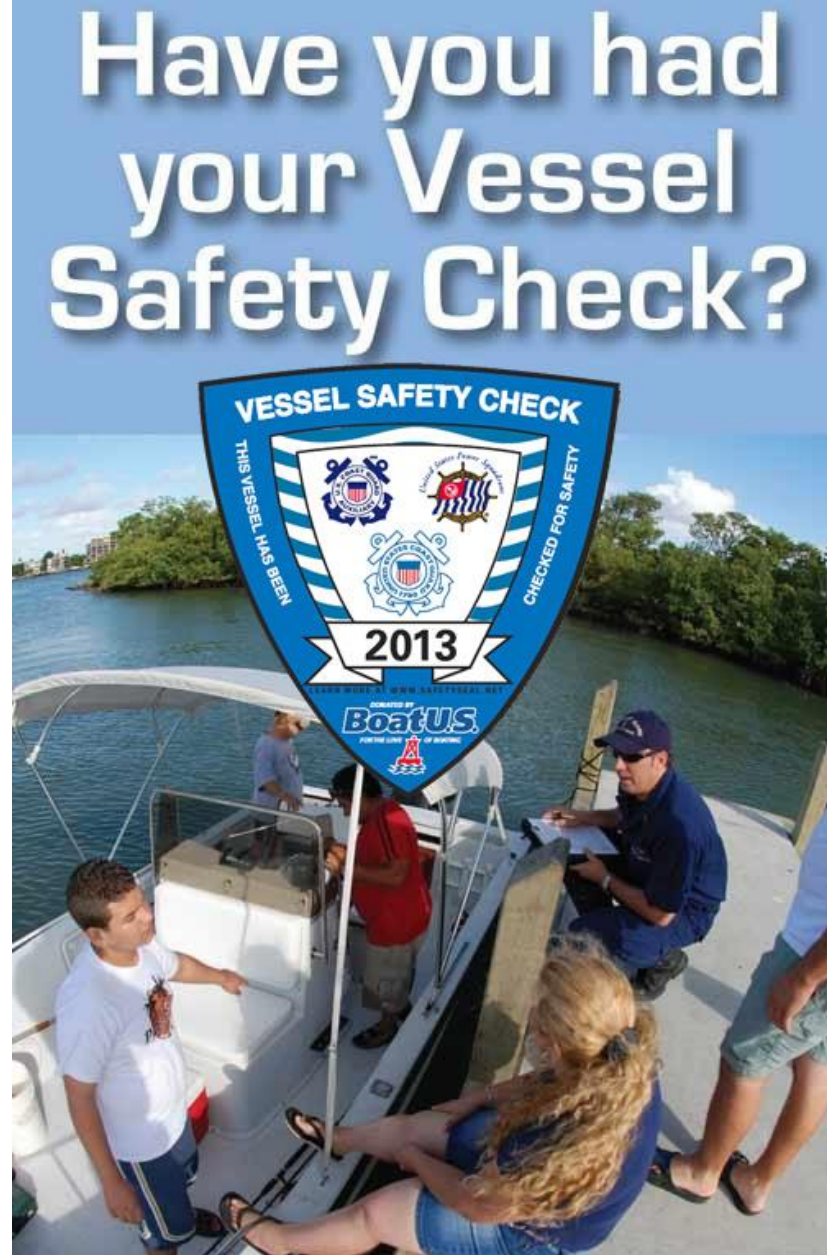
# Water Quality/Lake Levels

- Ongoing water quality problems at Ontario Beach
- Genesee River is classified as Impaired
- The IJC is developing new approach for managing water levels and flows in the Lake Ontario-St. Lawrence River system



# Education

- Recreational boaters are not required to get a license
- General need for improved boater education / outreach
- The Vessel Safety Check program is a free service offered by the Coast Guard Auxiliary



# Management & Operations

- The Port of Rochester Operations Analysis recommends that the new public marina be run as a “Municipal Operation”
- A Port or harbor on-line portal (website or blog) is needed for general and up-to-date relay of information



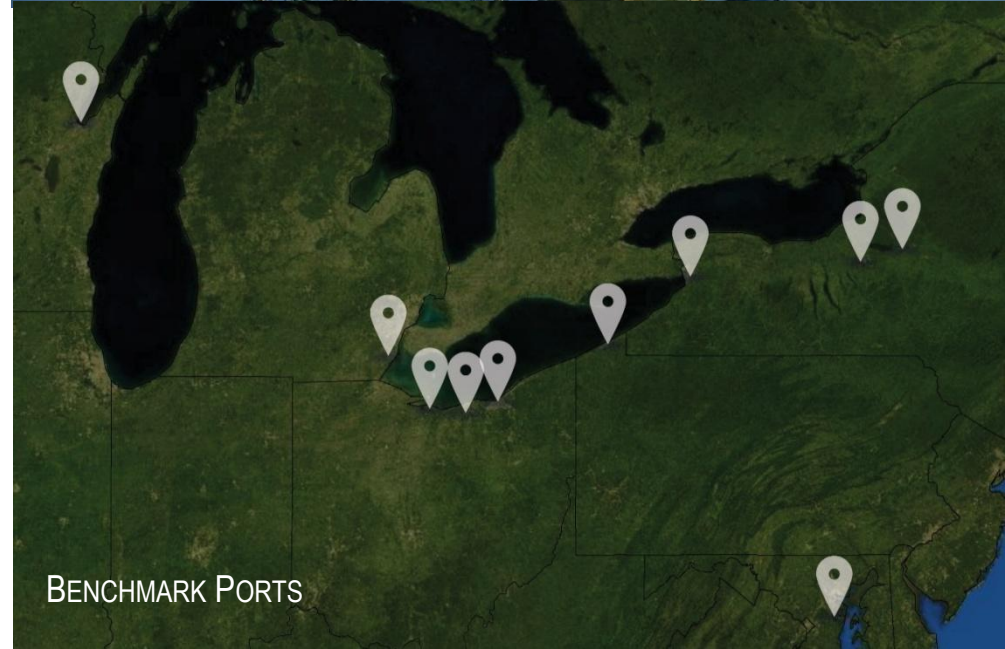
# Management & Operations

- There is a need for some entity responsible for overseeing operations and coordinating activities within the HMA
  - Consensus building
  - Representing/advocating for common interests
  - Communicating with law enforcement
  - Providing clear leadership for harbor activities
  - Coordinating dredging activities
  - Preparation of an Emergency Services Response Plan for the harbor
  - Promoting the harbor for tourism and economic development



# Discussion of Management Structures

- Objectives
- Benchmarking Analysis
- Key Findings Input
- Typical Organizations – Strengths & Weaknesses
- Sample Organizational Structure

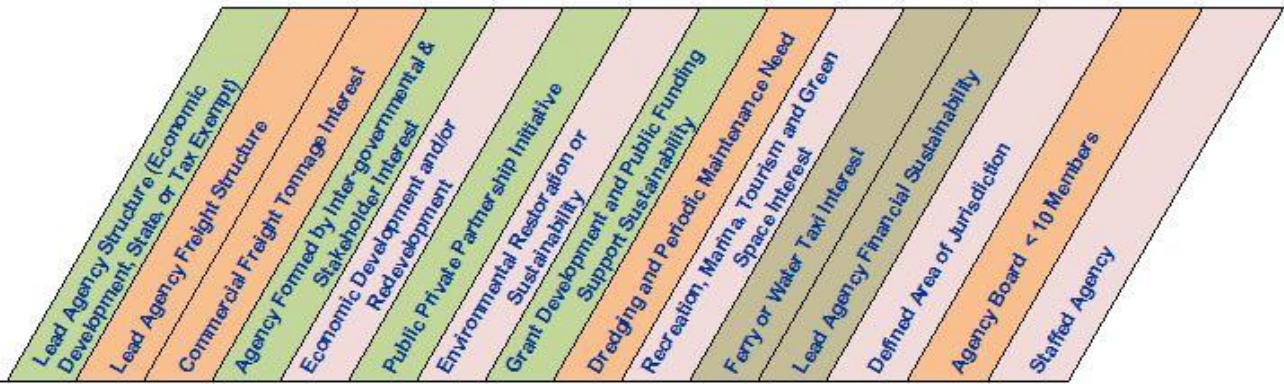




## Rochester HMP Mission & Goals

### Benchmark Criteria

### Lead Agencies



#### CITY & COUNTY ENTITY

	Lead Agency Structure (Economic Development, State, or Tax Exempt)	Lead Agency Freight Interest	Commercial Freight Structure	Agency Formed by Inter-governmental Stakeholder Interest	Economic Development and Redevelopment	Public Private Partnership and/or Environmental Partnership Initiative	Sustainability	Grant Development Supported or Support and Public Funding	Dredging and Periodic Maintenance Need	Recreation, Marina, Tourism and Green Space Interest	Ferry or Water Taxi Interest	Lead Agency Financial Sustainability	Defined Area of Jurisdiction	Agency Board < 10 Members	Staffed Agency
Port of Green Bay / Brown County, WI	✓	✓		✓		✓		✓					✓		✓
Lorain Port Authority /City of Lorain, OH	✓	✓	✓	✓		✓	✓	✓	✓	✓	✓	✓	✓	✓	✓
City of Sandusky, OH	✓	✓	✓	✓		✓	✓	✓				✓			

Freight Mission Specific

#### PORT AUTHORITY

	Lead Agency Structure (Economic Development, State, or Tax Exempt)	Lead Agency Freight Interest	Commercial Freight Structure	Agency Formed by Inter-governmental Stakeholder Interest	Economic Development and Redevelopment	Public Private Partnership and/or Environmental Partnership Initiative	Sustainability	Grant Development Supported or Support and Public Funding	Dredging and Periodic Maintenance Need	Recreation, Marina, Tourism and Green Space Interest	Ferry or Water Taxi Interest	Lead Agency Financial Sustainability	Defined Area of Jurisdiction	Agency Board < 10 Members	Staffed Agency
Erie-Western Pennsylvania Port Authority	✓	✓		✓		✓	✓	✓	✓	✓		✓	✓	✓	✓
Port of Monroe / Monroe County, MI	✓	✓		✓				✓	✓			✓	✓	✓	✓
Cleveland-Cuyahoga County Port Authority	✓	✓		✓		✓		✓				✓	✓	✓	✓

#### HARBOR DEVELOPMENT

	Lead Agency Structure (Economic Development, State, or Tax Exempt)	Lead Agency Freight Interest	Commercial Freight Structure	Agency Formed by Inter-governmental Stakeholder Interest	Economic Development and Redevelopment	Public Private Partnership and/or Environmental Partnership Initiative	Sustainability	Grant Development Supported or Support and Public Funding	Dredging and Periodic Maintenance Need	Recreation, Marina, Tourism and Green Space Interest	Ferry or Water Taxi Interest	Lead Agency Financial Sustainability	Defined Area of Jurisdiction	Agency Board < 10 Members	Staffed Agency
Baltimore Inner Harbor Development (BDC)	✓			✓	✓	✓	✓		✓	✓	✓	✓			✓
Harbor Point - City of Utica, NY				✓	✓	✓	✓		✓			✓			✓
City of Syracuse, NY; Inner Harbor District				✓	✓		✓		✓			✓			
ECHDC; "Inner & Outer Harbor", Buffalo, NY	✓			✓	✓	✓	✓		✓		✓	✓	✓	✓	✓

#### BENCHMARK KEY

Lead Agency Freight Interest
Broad Consensus for Success in Specific HMP Interests
Emphasis on Economic Development, 3Ps & Grants
Initial Criteria eventually excluded

#### Composite Organization Conclusions

Organized with Port/City Government Powers Driven by Dredging & Enforcement Issues  
 Defined Areas of Jurisdiction by Boundary or by Enterprise Type  
 Agency Should be Professionally Staffed

#### Generally Consistent Goals

Stakeholder Involvement  
 Grant Development Supported  
 Economic Development Emphasis  
 Recreation, Marina, Green Space & Tourism  
 Environmental Importance  
 Suggested Agency Board of < 10 members

# Typical Organizations – Strengths/Weaknesses

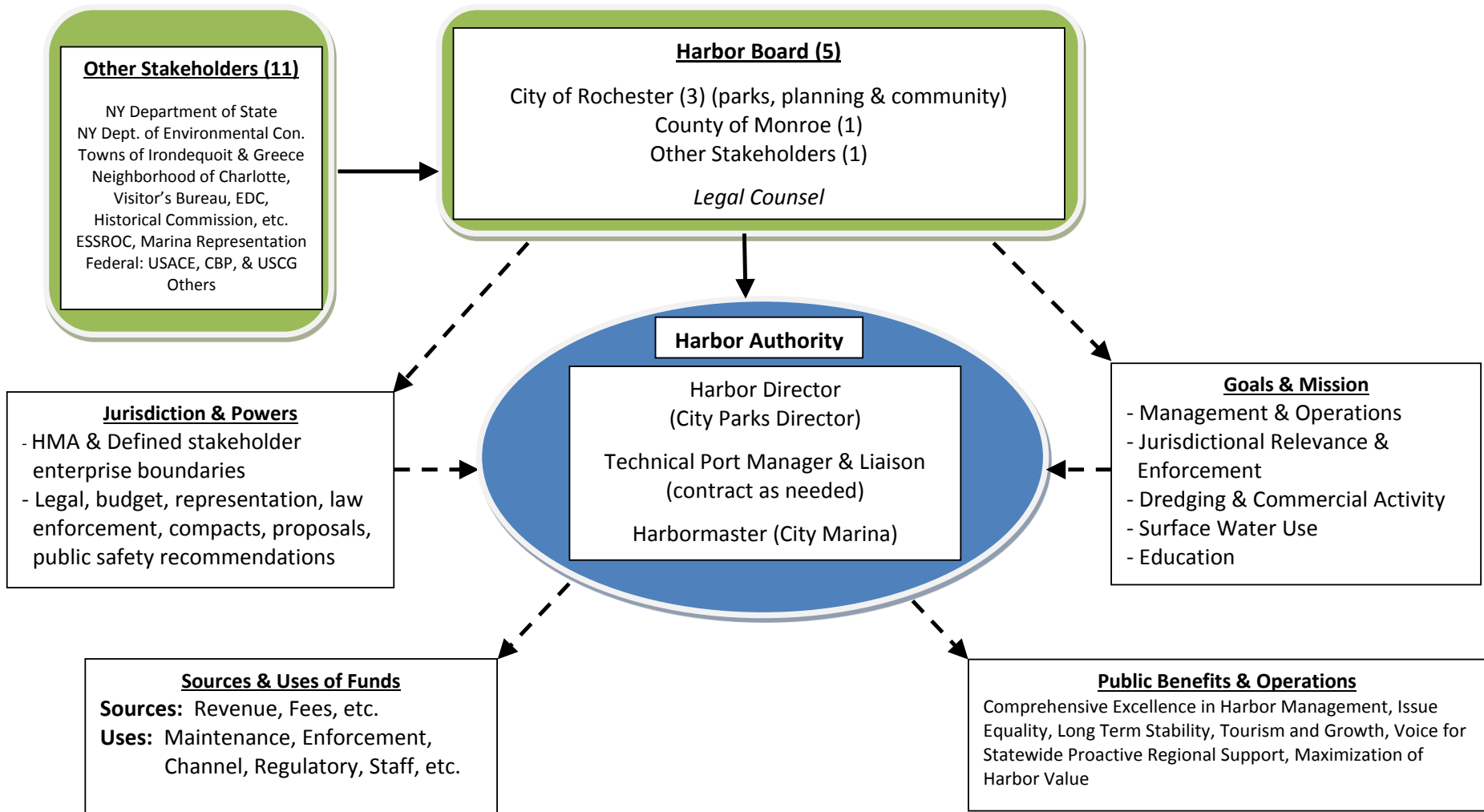
Port Authority and City & County	
Strengths	Weaknesses
Lead Agency Freight Structure	Attention to Multiple Missions
Commercial Freight Tonnage Interest	Reduced Public Use Sensitivity
Dredging & Periodic Maintenance Focus	Deeper Draft Oriented
Agency Board < 10 Members	Less Inclusive Decision Making
	Development Flexibility Challenged

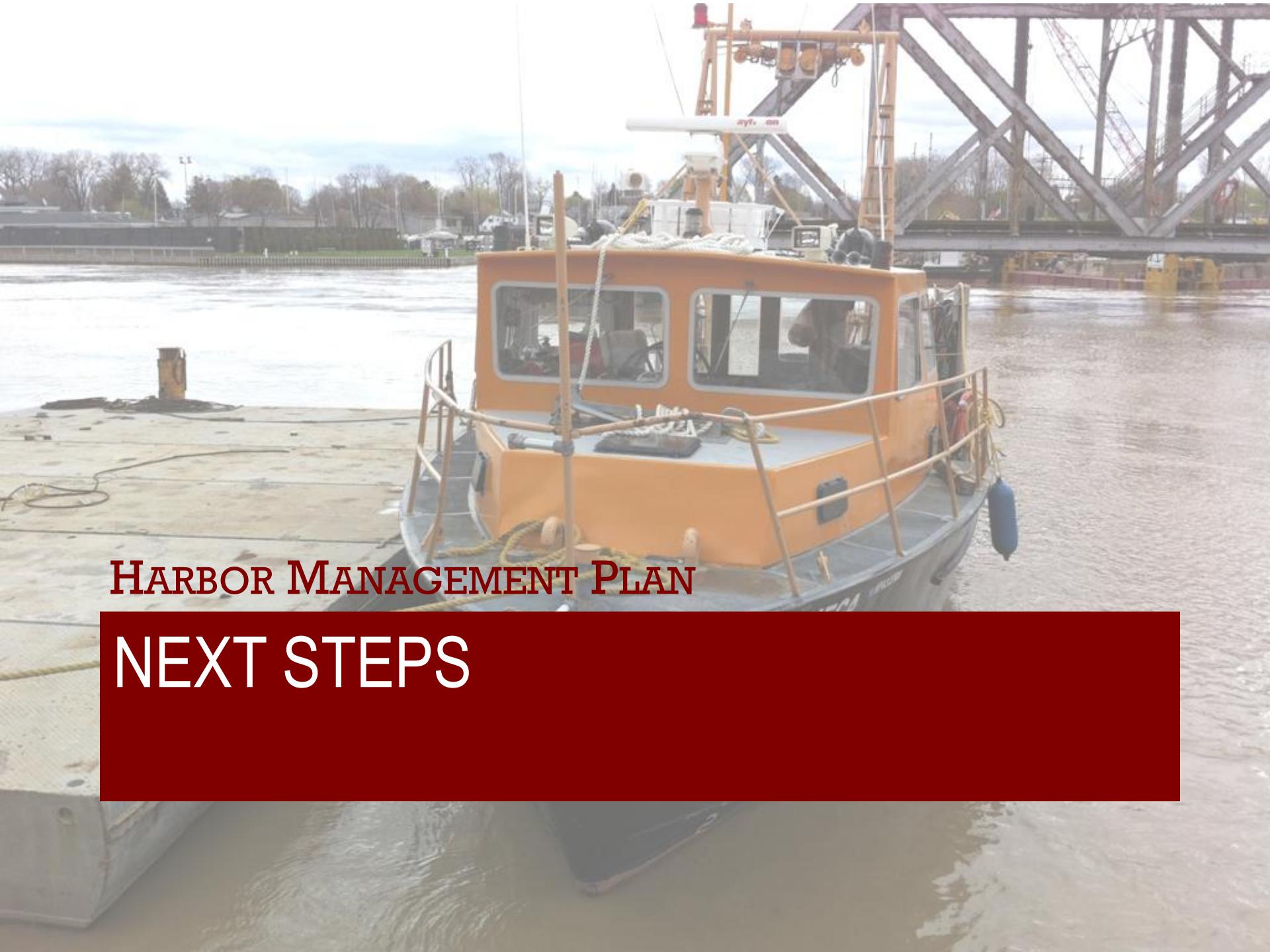
Port Authority, City & County and Harbor Dev.	
Strengths	Weaknesses
Economic Development & Redevelopment	Freight Growth Challenged
Environmental Restoration or Sustainability	Diluted and Conflicting Objectives
Recreation, Marina, Tourism & Green Space Interest	Cumbersome Large Agency Board
Defined Area of Jurisdictions	Jurisdictional & Mission Conflicts
Staffed Agency	Higher Operating Costs

City & County and Harbor Development	
Strengths	Weaknesses
Economic Development Sensitive	Reduced Freight and Deep Draft Dredging Focus
Agency Formed by Inter-governmental & Stakeholder Interest	Broad Multiple Issue Dilution
Public Private Partnership Initiatives	Higher Operating Costs
Grant development & Public Funding Support Sustainability	Reduced Financial Flexibility
Similar Environmental Interest	

Criteria of Interest to Rochester HMP

# Sample Organizational Structure





**HARBOR MANAGEMENT PLAN**

**NEXT STEPS**

# Next Steps

- Public Meeting #1
- Complete Inventory
- Further Analysis, Identify Gaps & Chart Direction



THANK YOU.