

- EXISTING FACILITIES**
- Bike Lane
 - Shared Lane Marking
 - Existing Trail
- APPROVED FACILITIES**
- - - Bike Lane
 - - - Shared Lane Marking
- PROPOSED FACILITIES**
- - - Bike Lane
 - - - Shared Lane Marking
 - - - Cycle Track
 - - - Proposed/Planned Trail
 - - - Bicycle Boulevard
 - Connection Opportunity



Bicycle Boulevard Gap Connections

Sources: NYS GIS Clearinghouse, ESRI, US Fish & Wildlife Service, Monroe County DOT

0 0.5 1 Mile



Author: Sam Piper

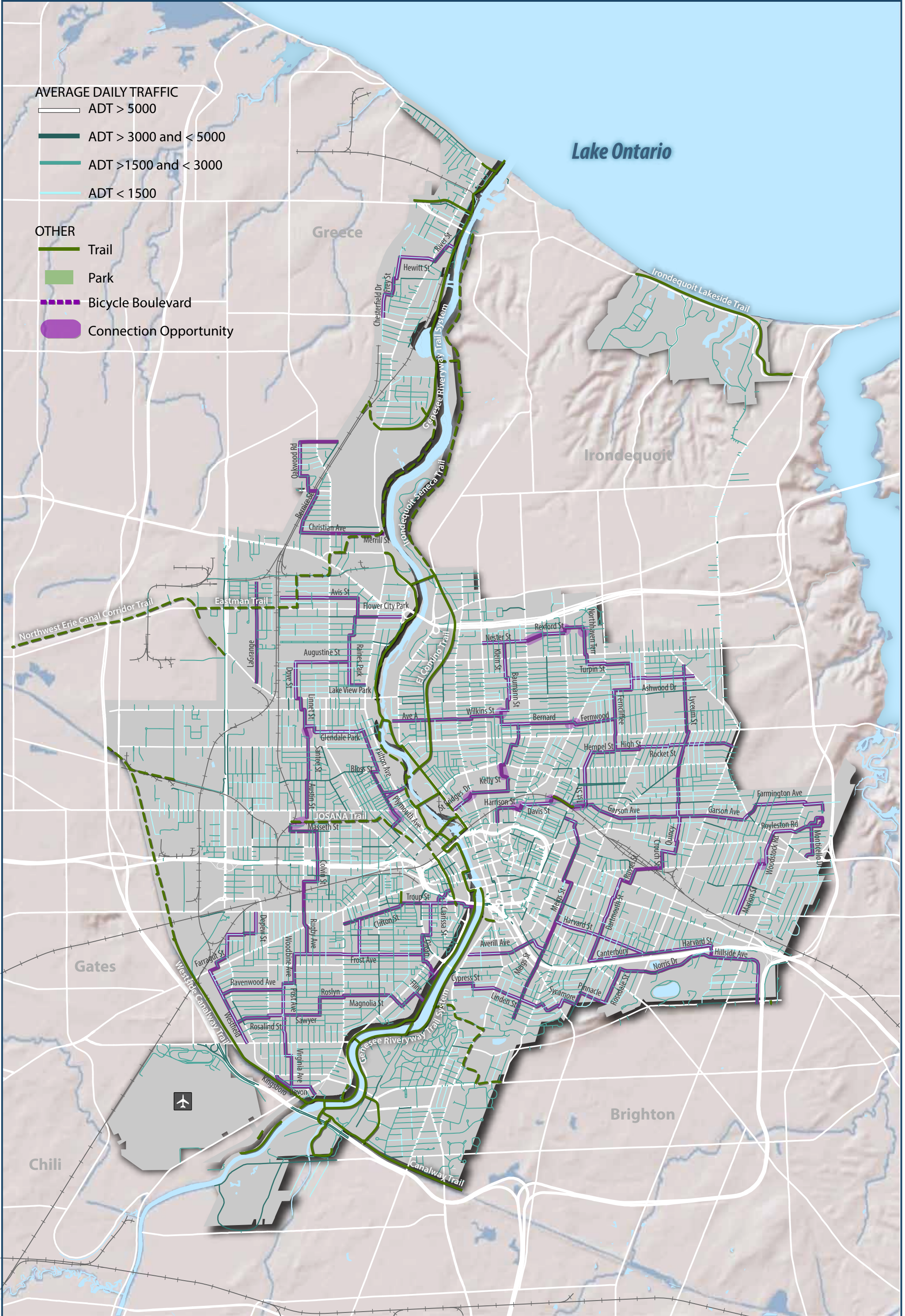
Summer 2014

AVERAGE DAILY TRAFFIC

- ADT > 5000
- ADT > 3000 and < 5000
- ADT > 1500 and < 3000
- ADT < 1500

OTHER

- Trail
- Park
- Bicycle Boulevard
- Connection Opportunity



Bicycle Boulevard Traffic Considerations



TRAILS

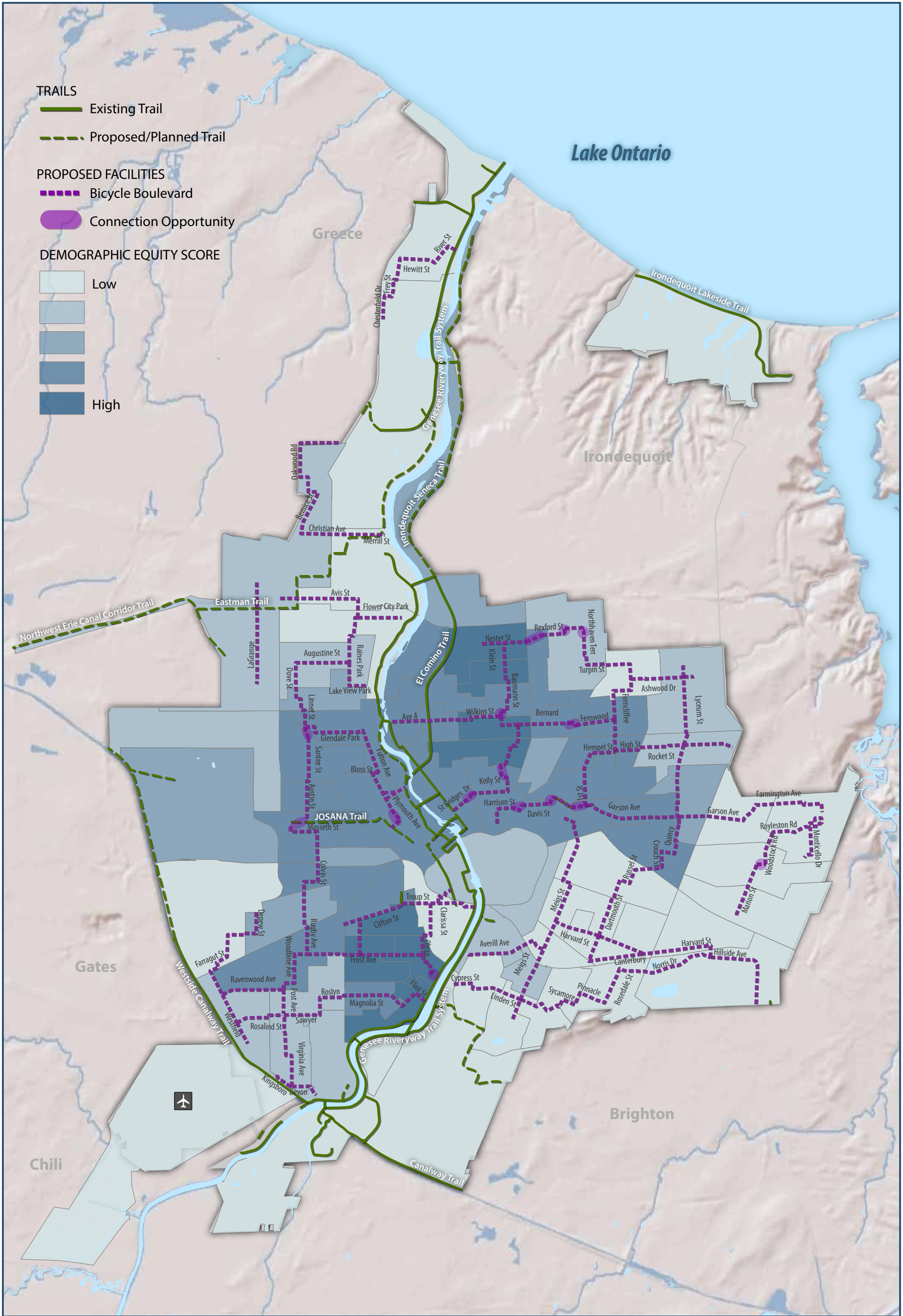
- Existing Trail
- Proposed/Planned Trail

PROPOSED FACILITIES

- Bicycle Boulevard
- Connection Opportunity

DEMOGRAPHIC EQUITY SCORE

- Low
- High



Bicycle Boulevard Demographics Analysis



TRAILS

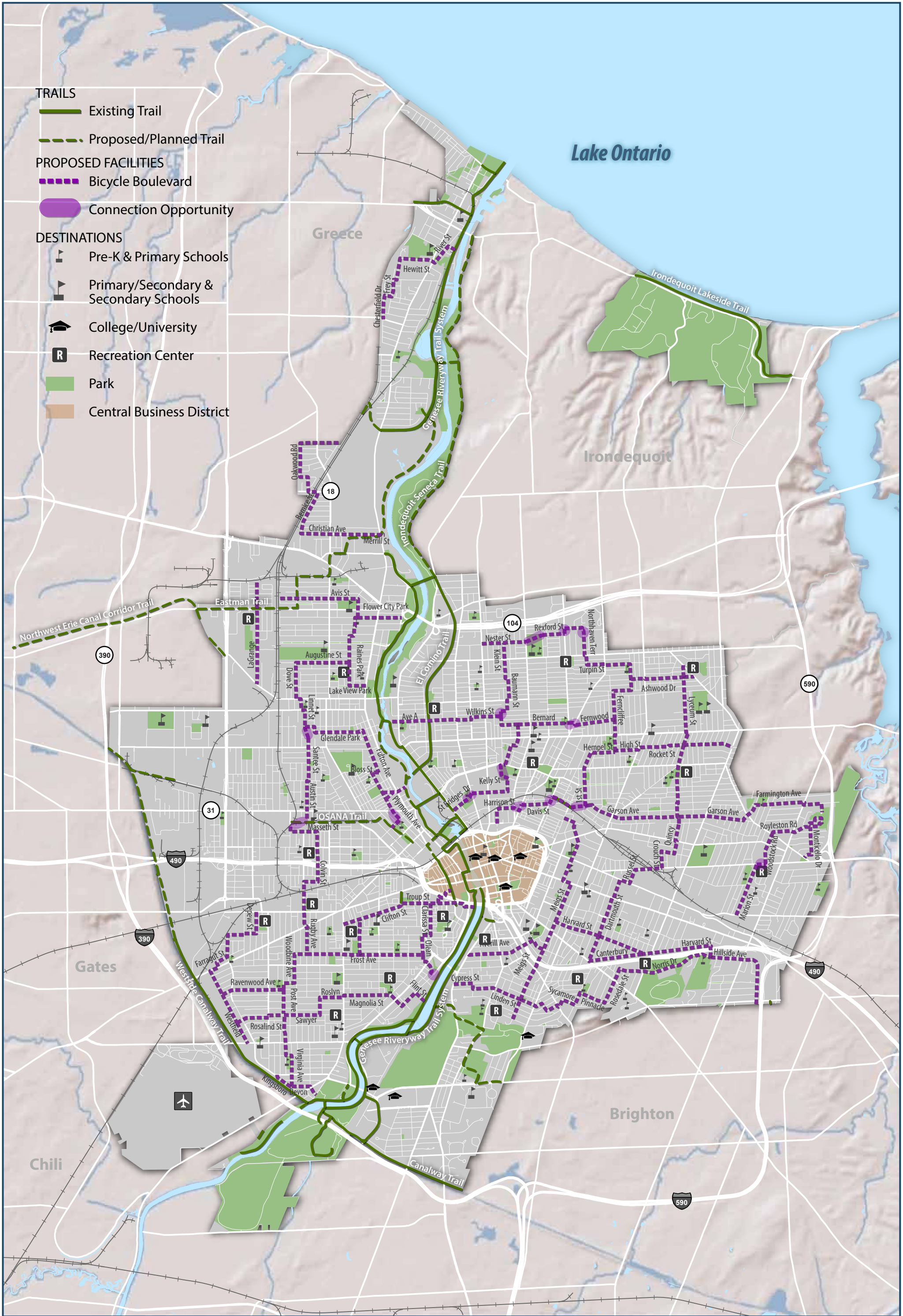
- Existing Trail
- Proposed/Planned Trail

PROPOSED FACILITIES

- Bicycle Boulevard
- Connection Opportunity

DESTINATIONS

- Pre-K & Primary Schools
- Primary/Secondary & Secondary Schools
- College/University
- Recreation Center
- Park
- Central Business District



Bicycle Boulevard Destination Connections

Sources: NYS GIS Clearinghouse, ESRI, US Fish & Wildlife Service, Monroe County DOT





0 0.5 1 Mile



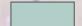
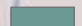

Summer 2014

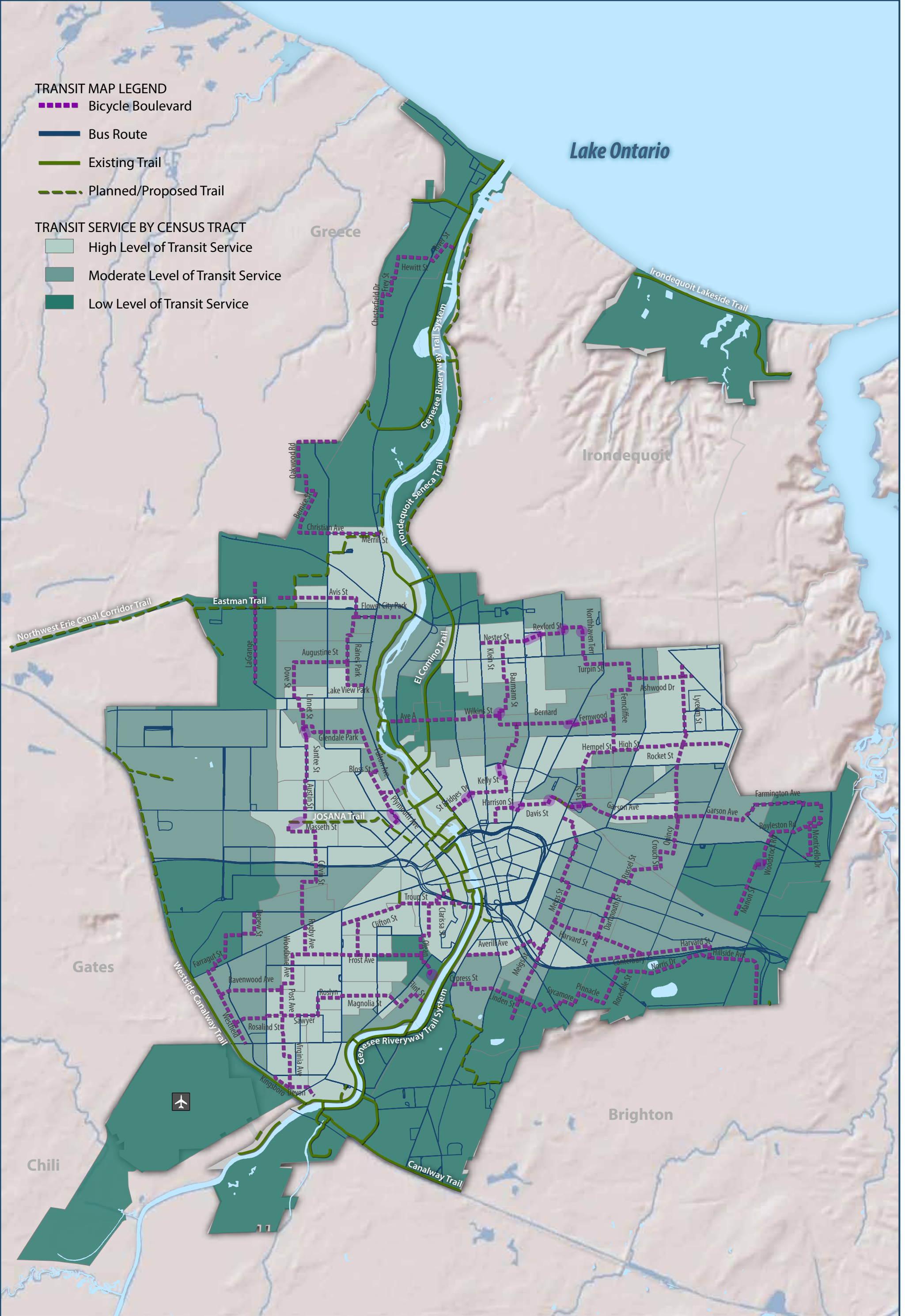
Author: Sam Piper

TRANSIT MAP LEGEND

-  Bicycle Boulevard
-  Bus Route
-  Existing Trail
-  Planned/Proposed Trail

TRANSIT SERVICE BY CENSUS TRACT

-  High Level of Transit Service
-  Moderate Level of Transit Service
-  Low Level of Transit Service



Bicycle Boulevard Transit Analysis

Sources: NYS GIS Clearinghouse, ESRI, US Fish & Wildlife Service, Monroe County DOT

0 0.5 1 Mile



Author: Sam Piper

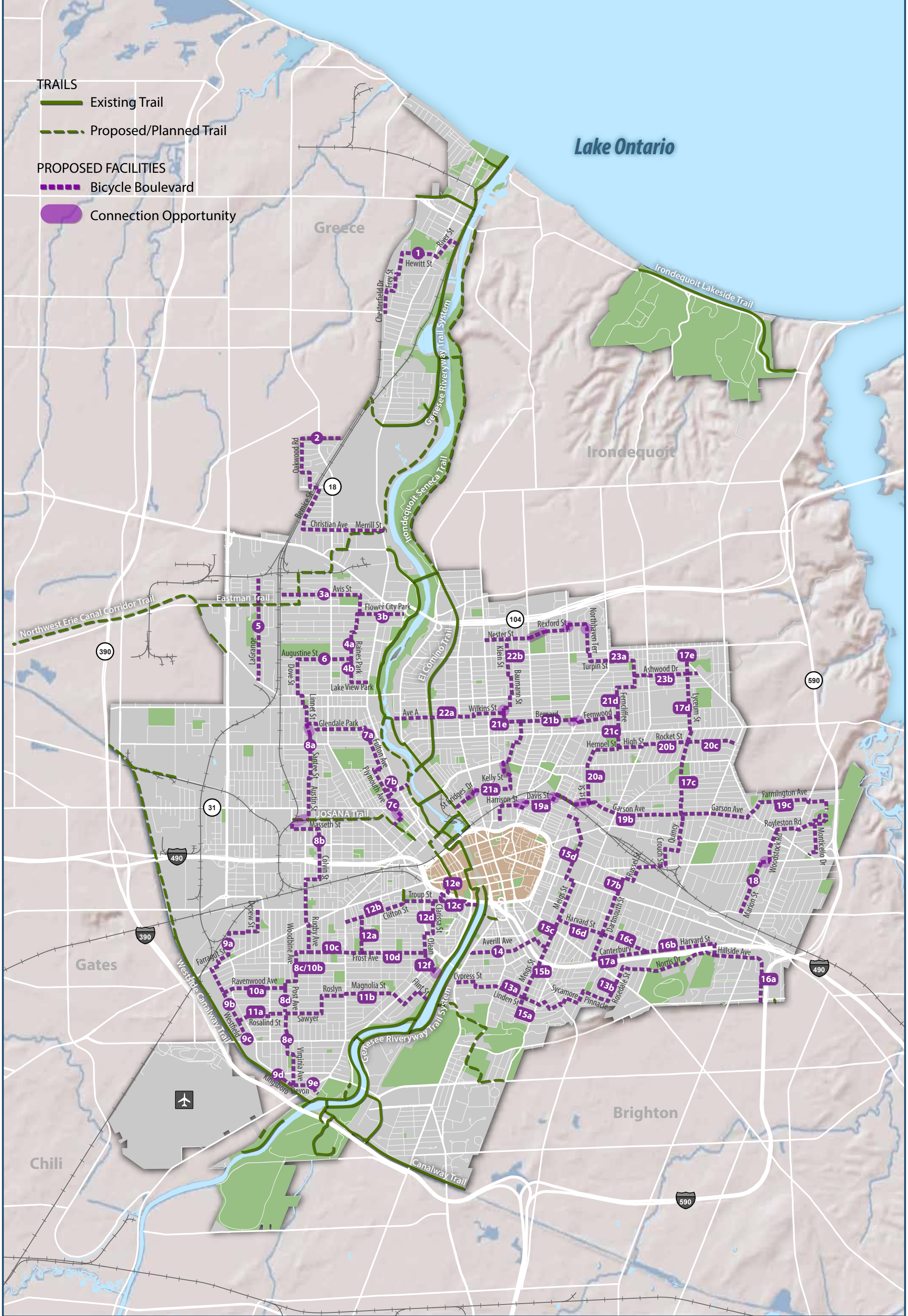
Summer 2014

TRAILS

- Existing Trail
- Proposed/Planned Trail

PROPOSED FACILITIES

- Bicycle Boulevard
- Connection Opportunity



Bicycle Boulevard Recommended Routes

Sources: NYS GIS Clearinghouse, ESRI, US Fish & Wildlife Service, Monroe County DOT



Author: Sam Piper

Summer 2014