



ROC CITY SKATE PARK

Design Workshop October 3, 2018



City of Rochester, NY
Lovely A. Warren, Mayor
Rochester City Council



NEWLINE
SKATEPARKS



Stantec

Skate Park - Existing Location Plan



Aerial View

Schedule



City Council
Approval

Sept 18, 2018



Design
Workshop

Oct 3, 2018



Community
Engagement

Nov 15, 2018
Dec 2018



Design
Development

Nov - Dec
2018



Construction
Documentation

Jan - Feb
2019



Permitting

Spring 2019



Contractor
Procurement

Spring 2019



Ground
Breaking

Summer 2019



Construction

Summer - Fall
2019



Grand Opening

Oct 5, 2019



The Team



Action Sport project led by the Stantec and New Line designers & landscape architects

Largest, most notable action sport portfolio worldwide

Sense of community pride

Creating parks that are welcome spaces

Defined pedestrian and spectator space, integrated landscaping elements

25
years of
skateboarding
experience



Kanten Russell

Skate Park Design Lead
New Line Skateparks Inc.
San Diego, CA

- **13** years as a professional skateboarder
- On the cover of **four** skateboarding publications
- Produced his own line of skateboarding goods



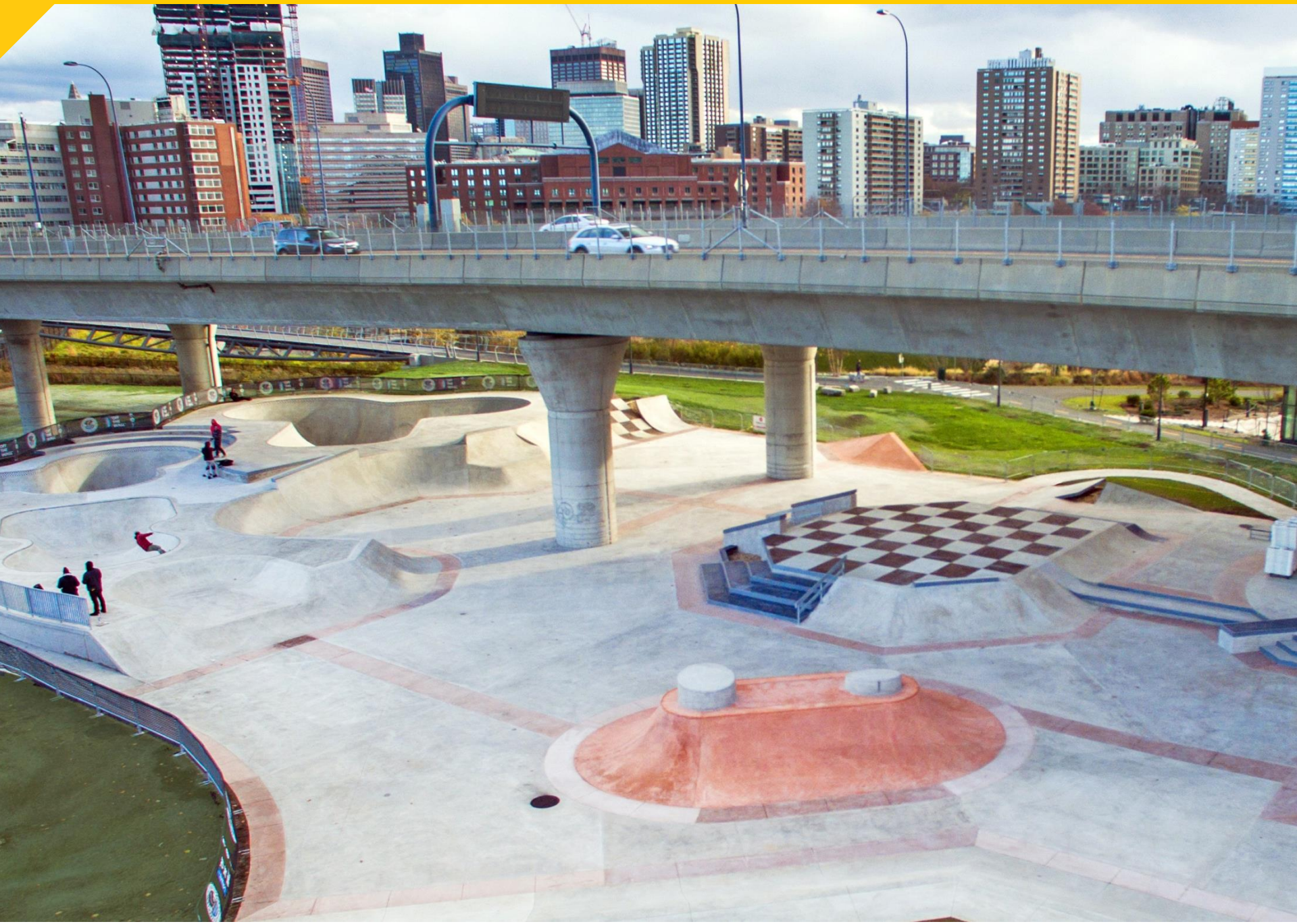


Additional Experience



Projects







19,000

The square footage of under-utilized, downtown space we transformed into a wheel-friendly skate plaza in Poplar Bluff, MO

















Your Project

Key Components



Functionality

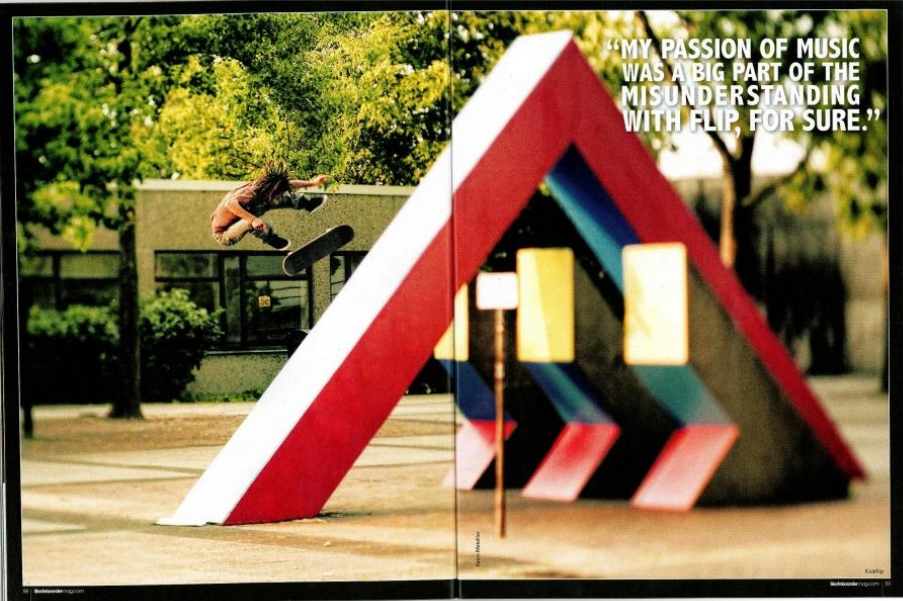


Existing Site
Conditions

INSPIRATION



INSPIRATION



INSPIRATION





STYLE OF PARK

Plaza/Street (Streetscape)

- Elements such as curbs, rails, ledges, stairs, gaps, planter boxes and benches are incorporated into a realistic skating/riding environment.
- Street style parks are designed to resemble traditional urban street areas.

Transition/Flow

- Elements such as curved walls, banks, ledges, pyramids, volcanoes, large flat bottom areas as well as large decking areas.
 - The wide-open course allows users to freely ride in many directions

Bowls (Transition)

- Skate feature that resembles a swimming pool with varying depths, walls, extensions and coping.

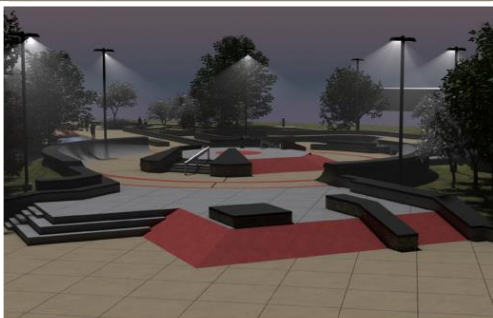
Hybrid/Combo

- A combination style park that combines one or more element from at least two styles of parks.

Green Strategies



Native Vegetated Bio- Swale



Integrated Solar Lighting



Recycled Granite Drainage Swale



Bio- Retention Drain Inlet Feature



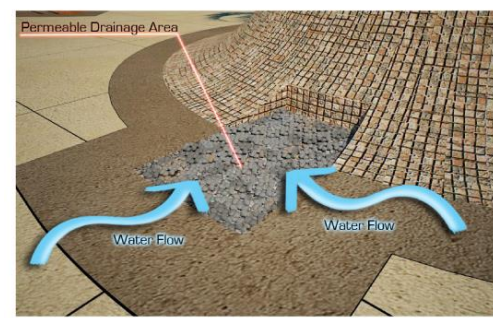
Solor Lighted Parking



Recycled Granite Steps and Ledge



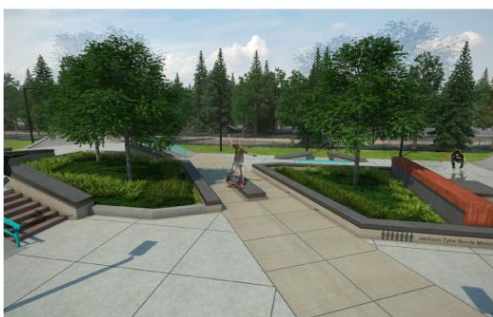
Recycled Granite Drainage Channel- Plan



Permeable Drainage Area



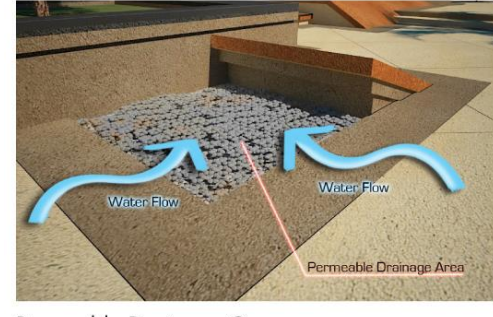
Rain Garden Inclusion



Rain Garden Planters



Mixed- Use Skate Plaza



Permeable Drainage Gap

Understanding and Project Goals

- Detailed skate park program development
- Updated concept plan for Wheel Friendly Park
Public engagement
- Detailed design and cost estimating
- Final construction documents
- Construction support services

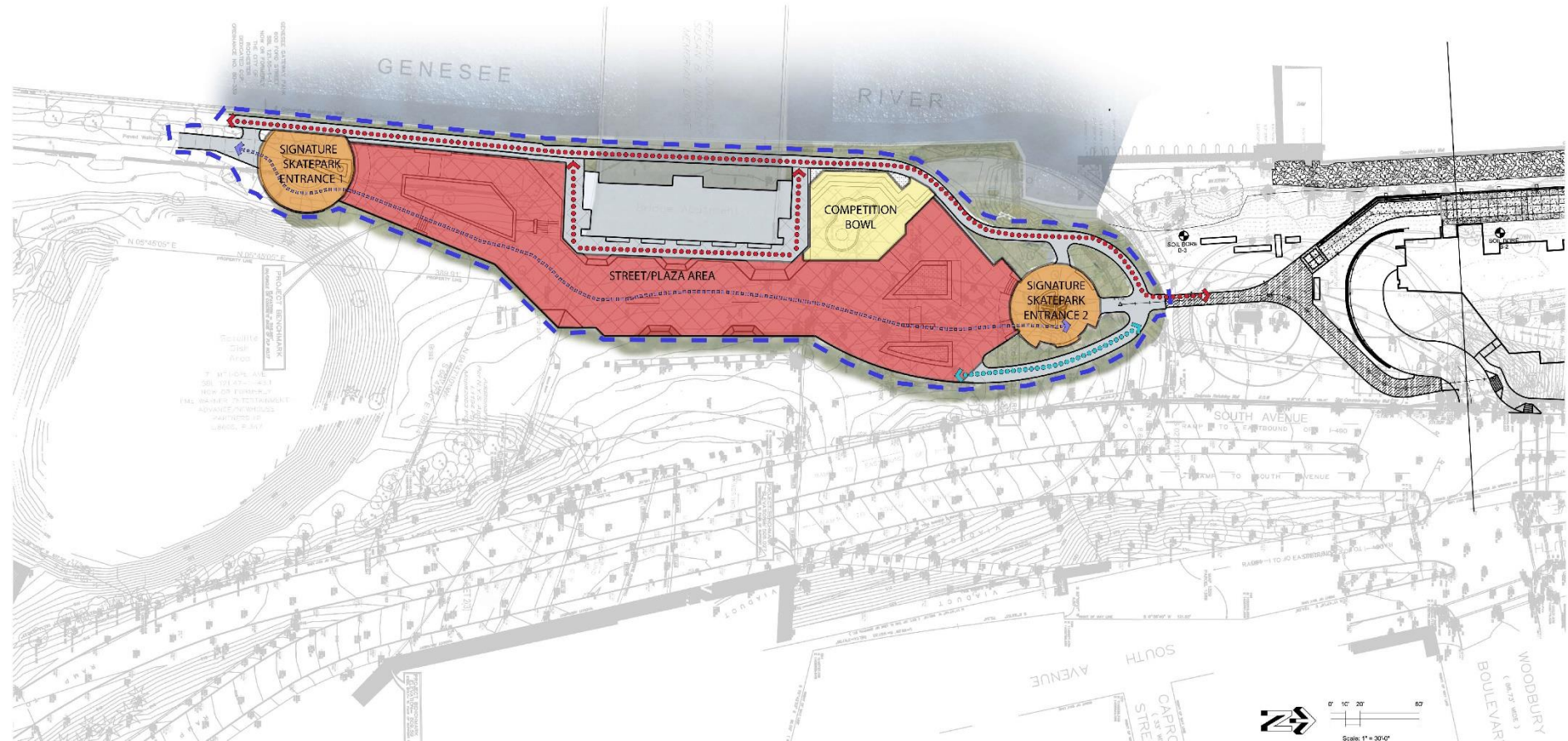


**Ultimate Goal:
Construct a modern,
top-ranked multi-use
skate park facility
that caters to users of
all ages and skill levels**

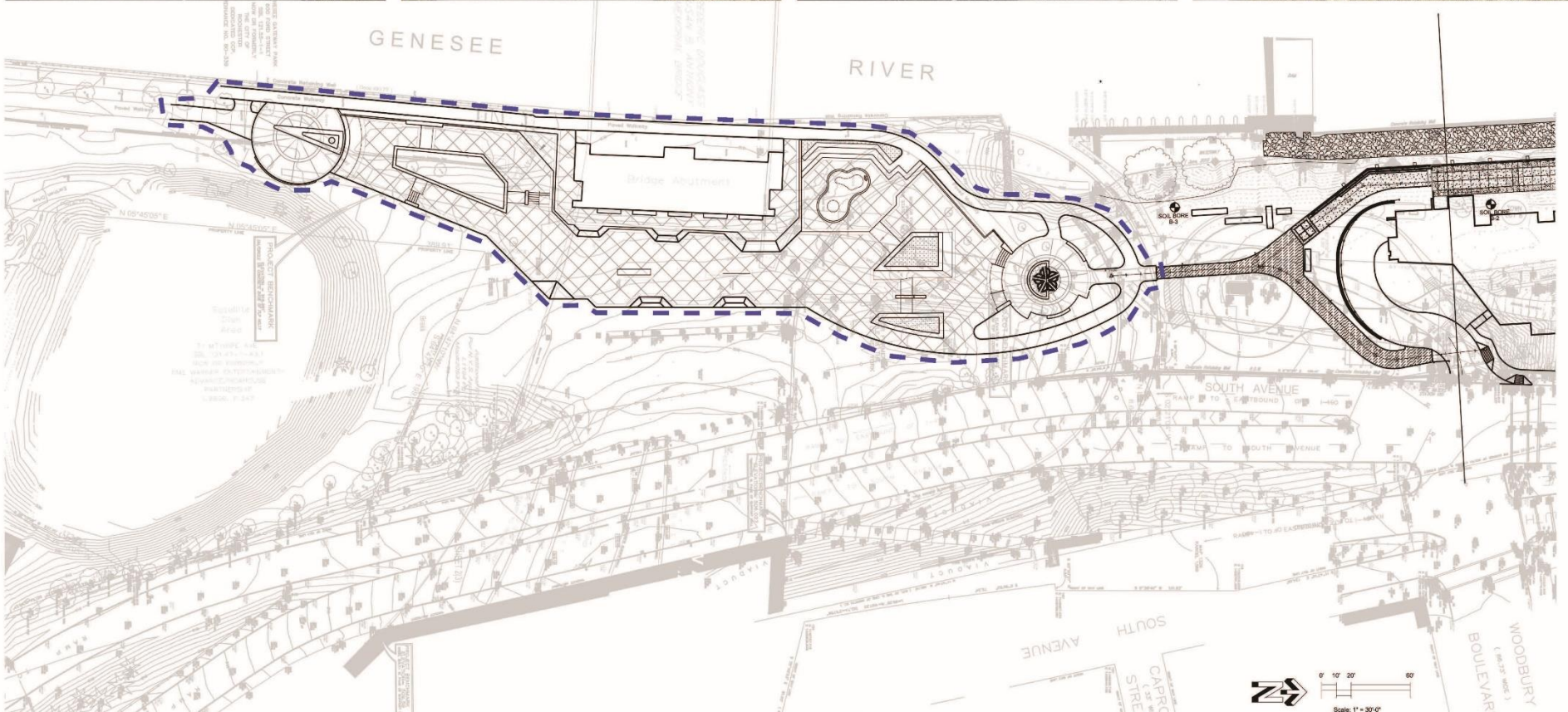
Skate Park - Existing Location Plan



Skate Park Flow and Skill Level Diagram



Skate Park Preliminary Concept Site Plan



Skate Park - Example Features



STRAIGHT LEDGE



CURVED LEDGE



UP-DOWN



PIER 7 LEDGE



FLAT RAIL



HAND RAIL



HUBBA LEDGE



UP-DOWN RAIL



PLANTER



MANUAL PAD



BLOCKING/STAIRS



STEP-UP



BUMP TO BUMP



GAP



BANK TO CURB



EMBANKMENTS

Skate Park - Example Features



FLOW BOWL



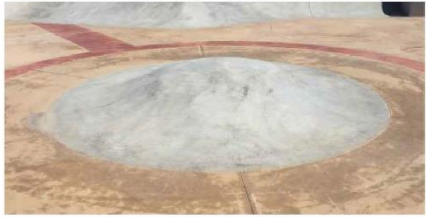
POOL



SNAKE RUN



EXTENSION



PUMP BUMP/ROLLERS



SPINE



QUARTER PIPE



LAI D BACK BANK



PYRAMID



BANKED HIPS



VOLCANO



TACO



METAL COPING



POOL TILE

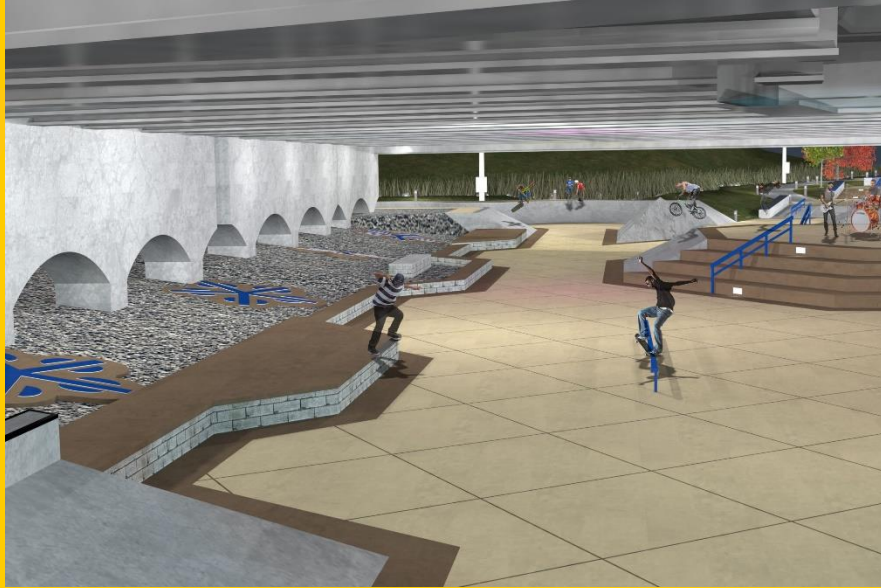


SKATEABLE ART



OTHER

Skate Park - Example Concepts



Open Discussion

During discussion use respectful etiquette

What elements from the examples presented did you like?

What modifications could be done to improve the preliminary concept?

Discuss the theme/look of the park

Please share ideas for park cultural identity

For Project Updates:
www.cityofrochester.gov
www.roccitypark.org &
www.facebook.com/RocCityPark

Project Survey:
<https://actionsports.typeform.com/to/baYiRT>



City of Rochester, NY
Lovely A. Warren, Mayor
Rochester City Council



NEWLINE
SKATEPARKS



Stantec